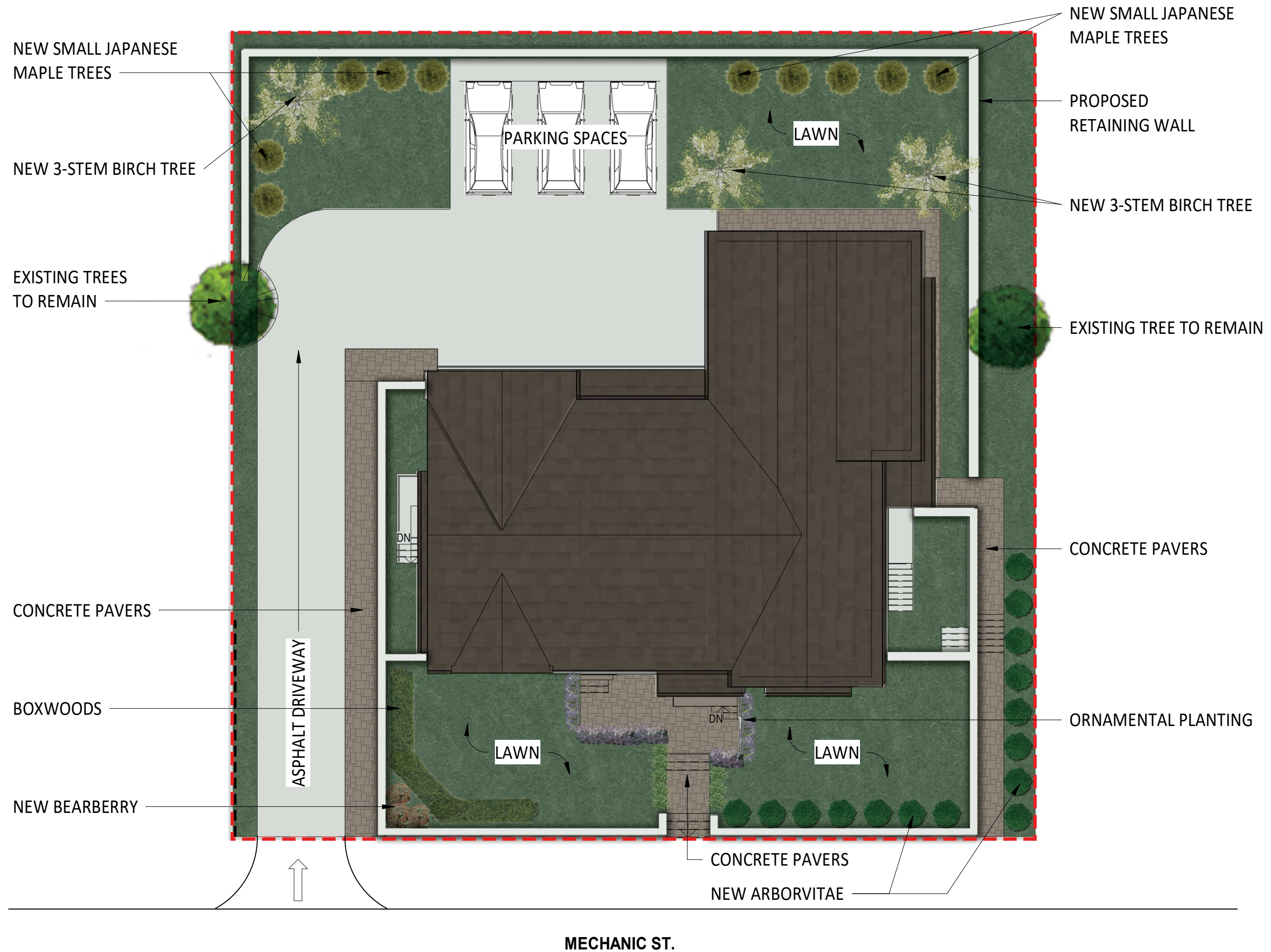


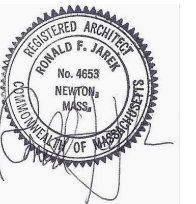
SITE PLAN



RONALD F. JAREK ARCHITECT
 487 WATERTOWN ST. - NEWTONVILLE - MA 02460 - (617) 818-4540 - Fax (617) 965-0663

634 COMMONWEALTH AVES- 210 - NEWTON - MA 02459 - (857) 399-5320 - INFO@MGDPLUS.COM

STAMP



IN PROGRESS

MECHANIC ST
RESIDENCES

LANDSCAPE SITE
PLAN

Project number 19-0312

Date 12-17-19

Drawn by MGD

Checked by RJ

SD.02

Scale

8/9/2021 9:23:53 AM

PLANTING IN PROJECT:

JAPANESE MAPLE (10)
1" CALIPER



3-STEM BIRCH (3)
3" CALIPER PER STEM



ARBORVITAE (15)
2" CALIPER



BOXWOOD
HEDGE (11)



ORNAMENTAL PLANTING IN PROJECT:

HOSTA (8)



LAVENDER PHENOMENAL (6)



BEARBERRY (3)
(NATIVE)

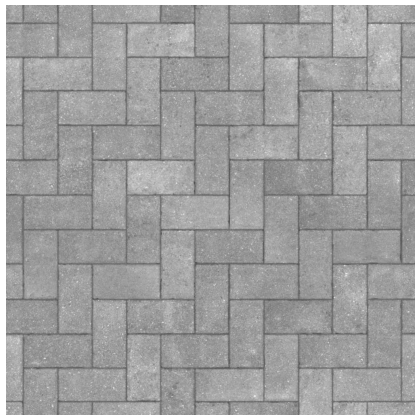


ACTAEA (5)
(NATIVE)



PAVING IN PROJECT:

CONCRETE PAVER



ASPHALT



TREE/ PLANT	QUANTITY	CALIPER SIZE	TOTAL CALIPER
Small Japanese Maple	10	1"	10"
Arborvitae	15	2"	30"
3-Stem Birch	3	3" per stem	27"
Boxwoods	8	N/A	
Actaea	5	N/A	
Hosta	8	N/A	
Lavendar Phenomenal	6	N/A	
Bearberry	3	N/A	
TOTAL PROVIDED	50		67"

TOTAL EXISTING INCHES OF CALIPER TO BE REMOVED = 76" INCHES

TOTAL INCHES OF CALIPER THAT WILL BE PROVIDED = 67"

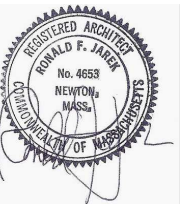
REMAINING 9" OF CALIPER WILL BE PAID TO THE FUND

RONALD F. JAREK ARCHITECT

487 WATERTOWN ST - NEWTONVILLE - MA 02460 - (617) 818-4540 - Fax (617) 965-0653

634 COMMONWEALTH AVES-210 - NEWTON - MA 02459 - (857) 399-5320 - INFO@MGDPLUS.COM

STAMP



IN PROGRESS

MECHANIC ST
RESIDENCES

LANDSCAPE
VEGETATION AND
MATERIALS

Project number 19-0312

Date 12-17-19

Drawn by Author

Checked by Checker

SD.02.1

Scale