



Newton Parks, Recreation & Culture Department

Athletic Fields Improvement Plan

Community Meeting # 1

Albemarle Park

October 20th, 2021

athleticfields@newtonma.gov

AGENDA

1

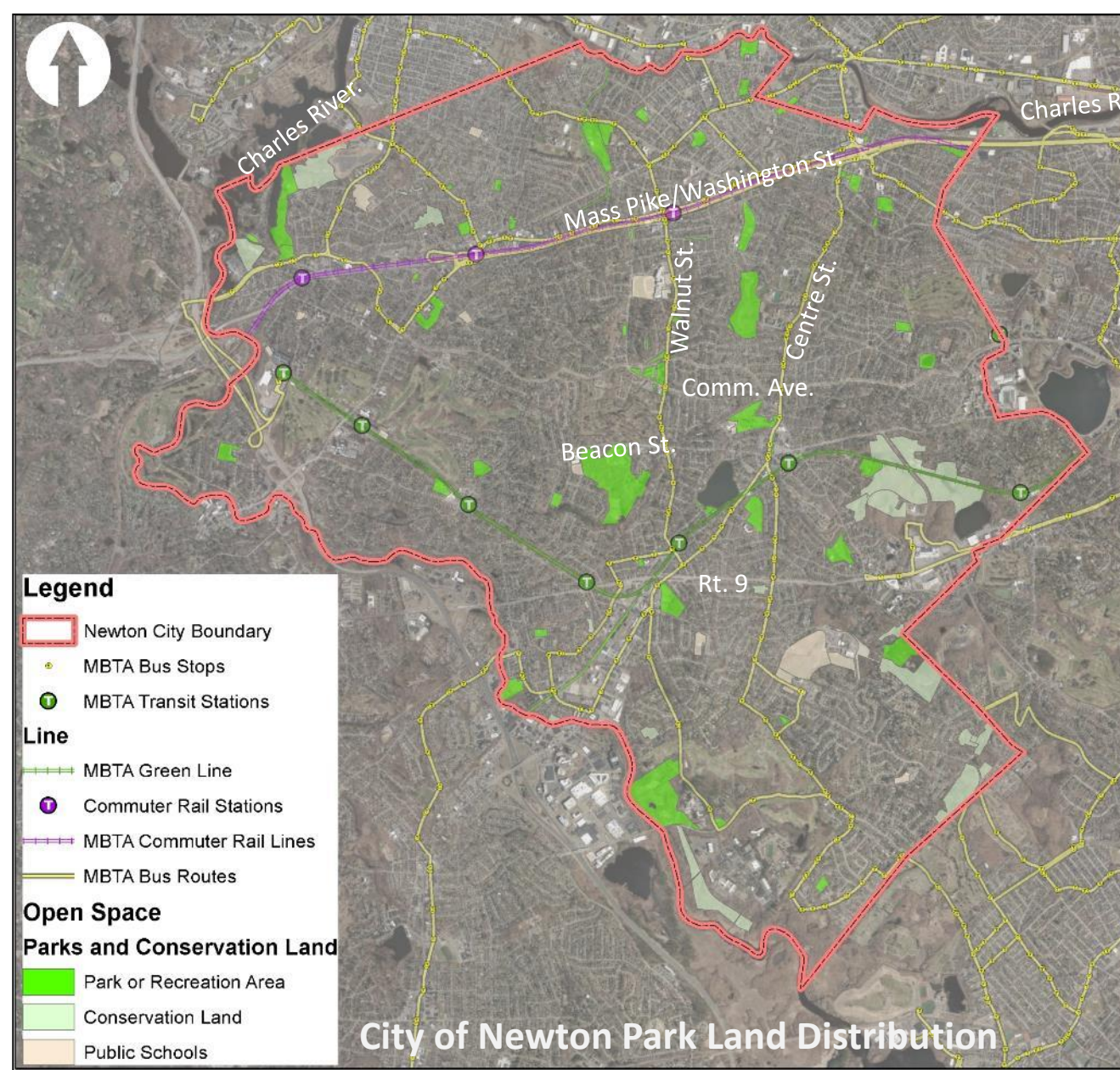
Athletic Fields Projects Overview

2

Albemarle Park Presentation

3


Albemarle Park Listening + Discussion



Parks, Recreation & Culture Overview:

- Manage and oversee nearly 600 Acres of park land with varying recreational interests including:
 - Aquatic facilities
 - Tracks + fields
 - Trails, pathways + safe routes to schools
 - Playgrounds + tot Lots
 - Field houses + community centers
 - Hard courts
 - Passive areas
 - Outdoor exercise equipment
 - Wooded areas
 - Outdoor challenge courses
 - Dog parks
 - Splash pads
 - Historic significance
 - Wetlands and waterways
- Spread across all Villages, Wards + School zones

Newton Parks, Recreation and Culture Department
Athletic Fields Capital Improvement Plan

A wide-angle photograph of a green athletic field, likely a soccer field, with several white goals and nets. The field is surrounded by trees and a large white house is visible in the background. The sky is overcast with grey clouds. The text "Why improve athletic fields?" is overlaid in the center of the image.

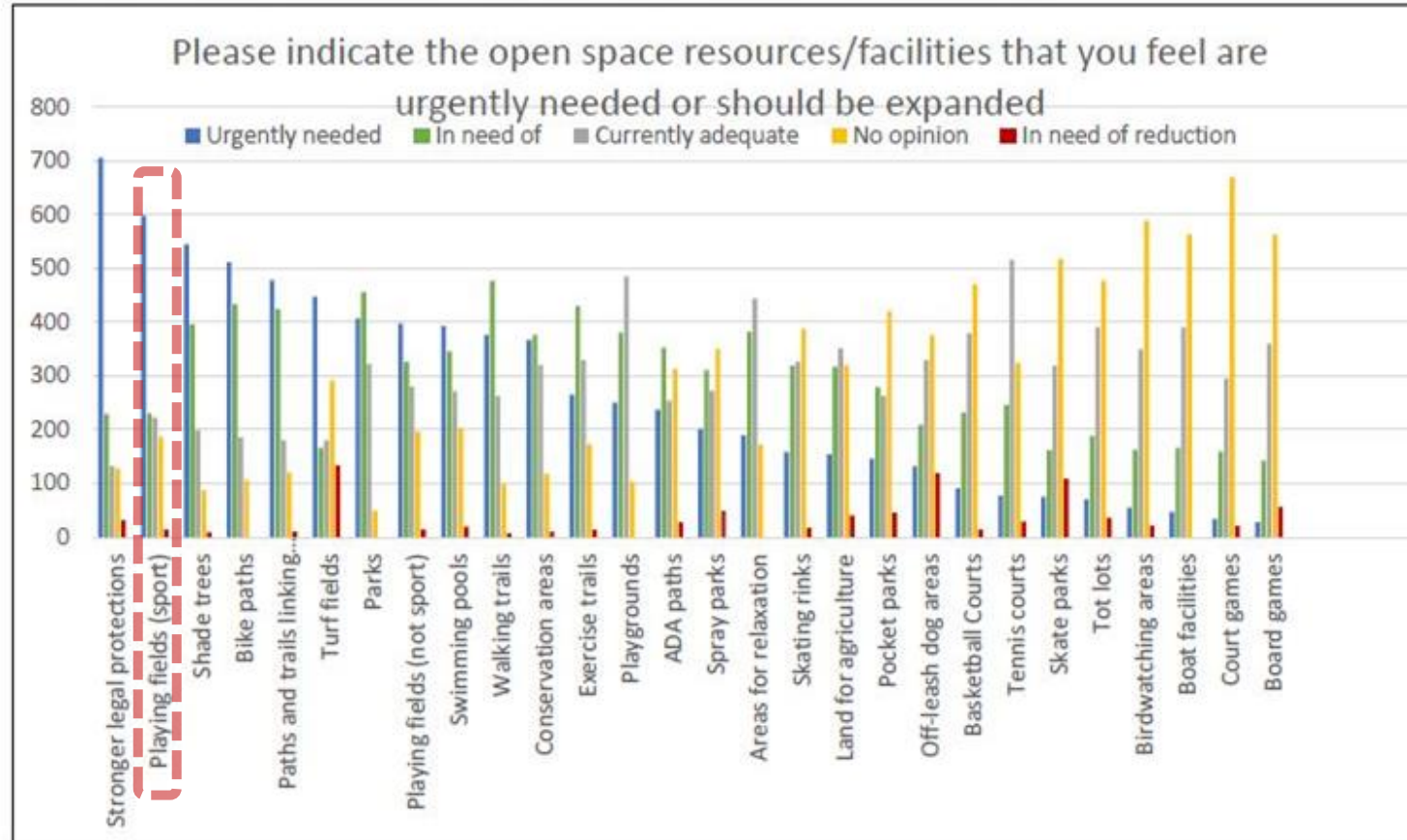
Why improve athletic fields?



Current facilities experience little to no rest time and are overused

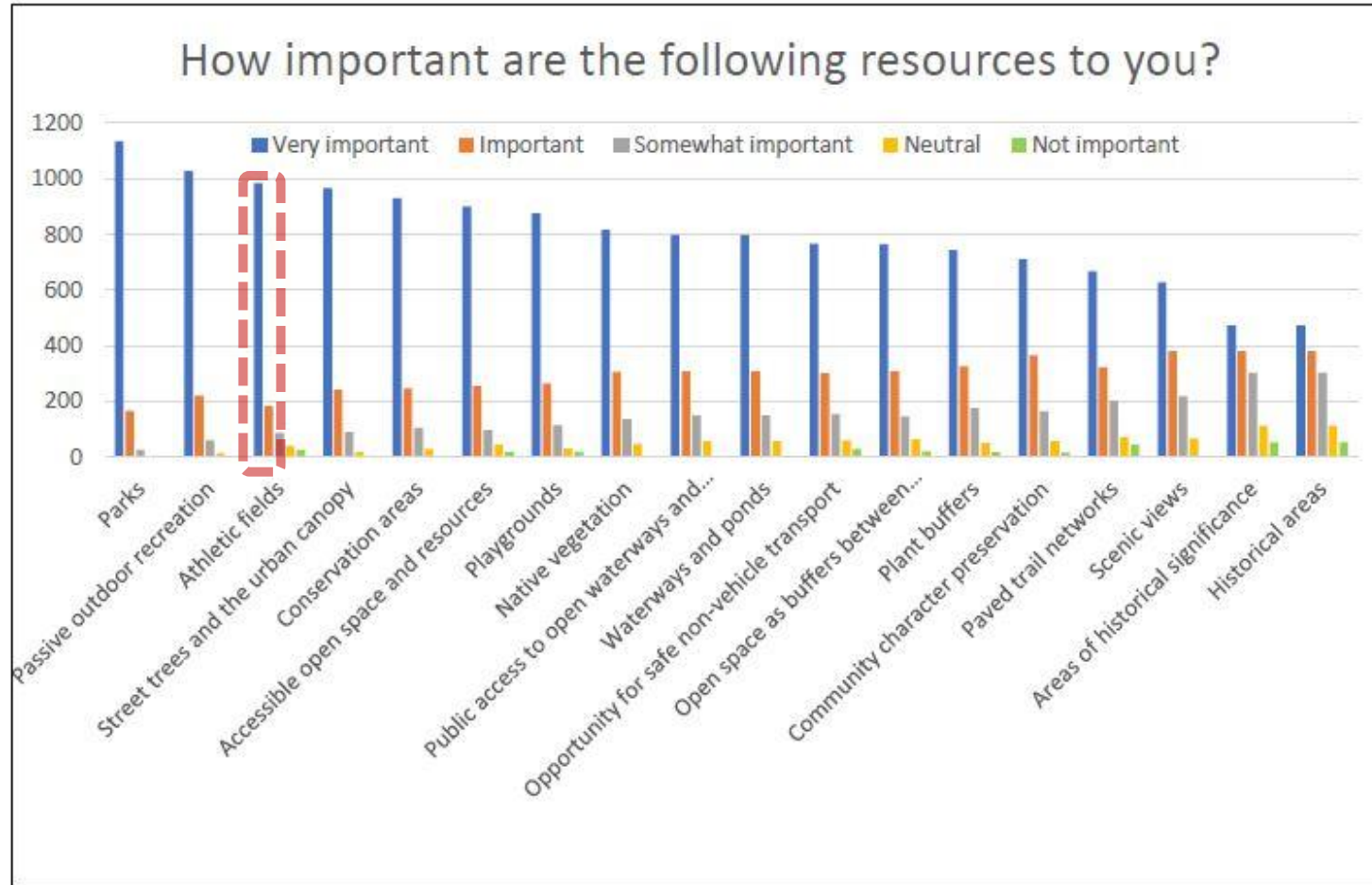
Community Survey (Open Space + Recreation Plan)

Figure 42. Community Survey: Open Space Resources in Greatest Demand




Community Survey (Open Space + Recreation Plan)

Figure 43. Community Survey: Open Space Resources in Greatest Demand



Field + Park Improvement Goals


- IMPROVE QUALITY AND QUANTITY OF USABLE MULTIUSE/MULTIPURPOSE FIELDS
- IMPROVE ACCESSIBILITY IN PARK AND FIELD AMENITIES
- ESTABLISH STANDARDIZED PARK CONSTRUCTION DETAILS TO BETTER MANAGE OPERATION & MAINTENANCE POST CONSTRUCTION
- INVEST EQUITABLY IN NEWTON'S ATHLETIC FIELDS + PARKS ACROSS THE CITY

A wide-angle photograph of a soccer field. In the foreground on the left, a white soccer goal with a net is visible. The field is green and appears to be well-maintained. In the middle ground, there are several other soccer goals and stadium lights. The background is filled with dense green trees and a white house with a grey roof. The sky is overcast with grey clouds. The text "How did we prioritize field improvements?" is overlaid in the center of the image.

How did we prioritize field improvements?

Prioritization Criteria

- OPEN SPACE & RECREATION PLAN
- CITY OF NEWTON CAPITAL IMPROVEMENT PLAN (CIP)
- POTENTIAL FOR GREATEST CITY-WIDE BENEFIT
- PROJECT SEQUENCING: PRIORITIZE NEW FIELDS BEING BROUGHT ONLINE FIRST
- POTENTIAL FOR EXPANSION OF MULTIUSE FIELDS
- EXPANDING EVENING PLAY (LIGHT IMPROVEMENTS/ ADDITIONS)
- PLAYER SAFETY
- INTEGRATED WITH OTHER PROJECTS IN A PARK AREA (E.G., PATH AT MCGRATH, GATH POOL PROJECT)



How do we arrive at a viable project design?

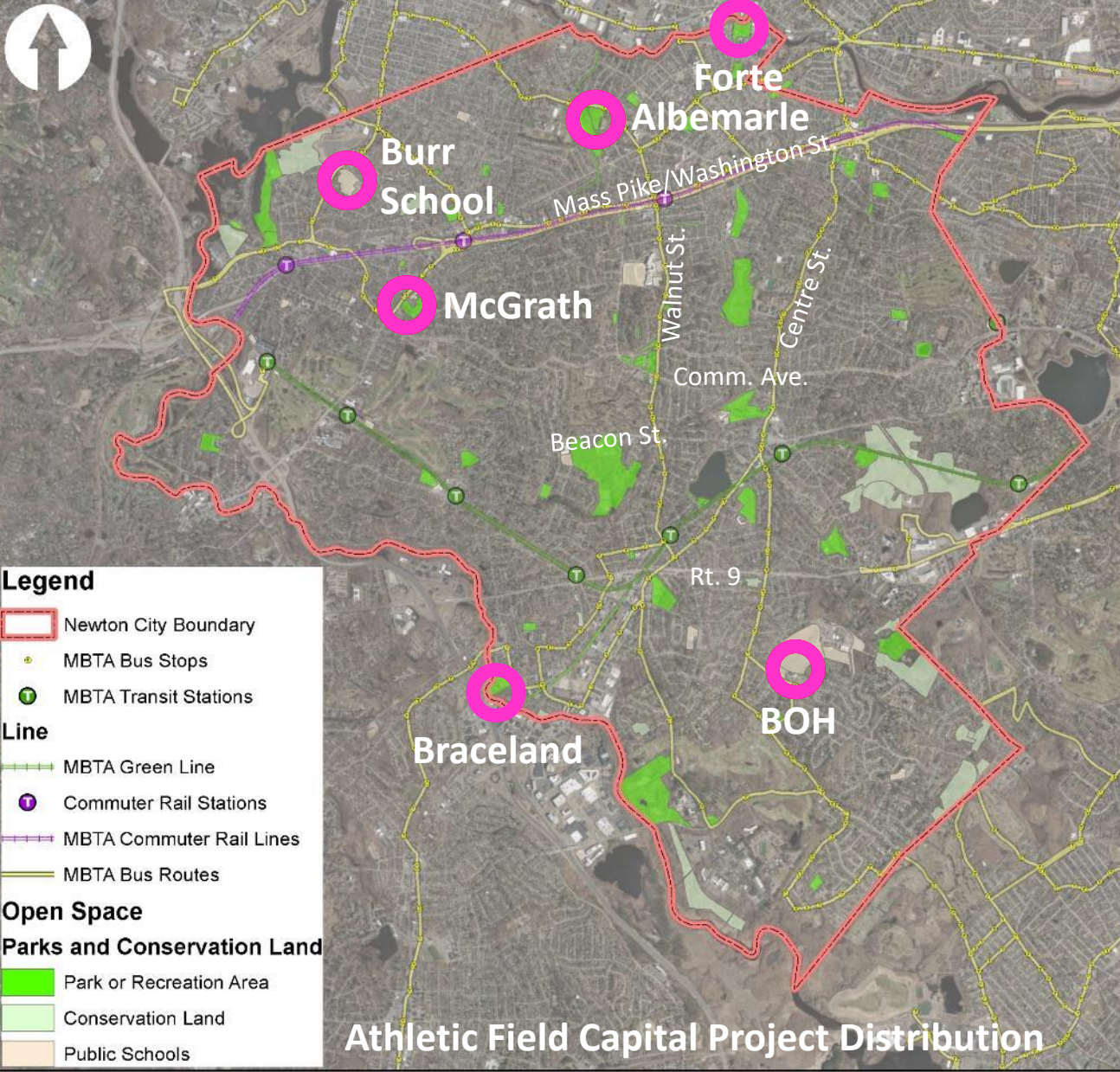


**Safety +
Regulatory
Guidelines**

**PROJECT
GOALS**

**Parks, Recreation
& Culture
Goals**

**Community
Input**



Phase 1 Capital Project Distribution:

- Albemarle Park/ Russ Halloran Sports and Recreation Complex
- Forte Park
- Burr School
- Brown/Oak Hill Fields
- McGrath Park
- Bobby Braceland

TOTAL: 6 Sites

Newton Parks, Recreation and Culture Department
Athletic Fields Capital Improvement Plan

Additional Athletic Field Projects in the works:

- NNHS Tiger Stadium: High efficiency, low spillage Sports Lighting project (FY 23)
- NSHS Winkler Stadium & Brandeis Rd. Field: Artificial turf carpet replacement (FY 23)
- NSHS Brandeis Road Field: High efficiency, low spillage Sports Lighting project (FY 23)
- NNHS: Tiger Stadium: Artificial turf carpet replacement (FY 25)
- Forte Park: Developer-funded sports relighting (TBD)
- Increased Maintenance: additional seeding, fertilizing, and aeration, etc.

CITY OF NEWTON ATHLETIC FIELDS MAINTENANCE BUDGET IMPROVEMENTS

- **Increase athletic field maintenance capabilities**
- **Increase scope of contractual maintenance work**
- **Significantly increase turf management capabilities**

Public Grounds Maintenance Budget					
Maint. Budget Expense Item	General Description	Fiscal Year 2021	Fiscal Year 2022	Budget Increase in Dollars	Budget Increase Percentage
Turf Mowing	Mowing	\$ 575,000	\$ 700,000	\$ 125,000	22%
	Leaf removal				
	Mulching				
	Pruning				
Turf Management	Aerification	\$ 75,000	\$ 250,000	\$ 175,000	233%
	Fertilization				
	Slice seeding				
	Top dressing				
	Integrated Pest Management (IPM)				

Albemarle Park



Russ Halloran Sports & Recreation Complex at Albemarle 24.9 ACRES

Ward: 2

Village: Newtonville/
West Newton

Existing Amenities

- playgrounds
- gazebo
- Gath pool
- community garden
- 2 little league fields
- 1 baseball field
- 1 t-ball field
- 2 softball fields
- 2 multipurpose fields
- middle school track
- 2 intermediate soccer fields
- basketball
- tennis
- field house
- irrigated
- lighted
- walking paths, Avery woods
- 4th of July Fireworks
- Snack shack/ticket booth
- 180 parking Spaces (10 ADA)



Albemarle Park Fields Key Athletic and Facility Stake Holder Data

Facility Name	Non-permitted stake holders	Key Permitted Stake Holders					
		Spring Users (April-June)	Total Spring Permitted Hours	Summer Users (July-August)	Total Summer Permitted Hours	Fall Users (Sept. - November)	Total Fall Permitted Hours
Albemarle Park 'Russell J. Halloran Sports and Recreation Complex'	F.A. Day Middle School students, playground users, passive users, tennis players, basketball players, general park users, pool users, safe route to school	Newton Little League; Newton LL Seniors; Senior Youth Baseball; Newton Girls Softball; Newton Youth Soccer; Newton Girls Soccer; BUDA Youth Frisbee; F.A. Day Middle School Athletics; Prime Baseball League; Babe Ruth Baseball Tryouts; Adult Cricket; Extra Innings Baseball Clinic	2905 hours	Newton Little League; Babe Ruth Baseball; Adult Cricket; Newton Girls Softball; Newton Community Ed - baseball; Boys and Girls Club; Extra Innings Baseball Clinic; Mustang Youth Football; American Legion Baseball; Prime Baseball; BUDA Youth Frisbee; Juventas Youth Soccer	1588 hours	Newton Little League; Newton LL Seniors; Adult Cricket; Newton Girls Softball; Mustang Youth Football; F.A. Day Middle School Athletics; Newton Youth Soccer; Newton Girls Soccer; Extra Innings Baseball Clinic; Lasell Baseball; NNHS Baseball captain's practice; BUDA Youth Frisbee; BUDA Adult Frisbee	2115.50 hours

Athletic Stake Holder Groups highlighted in Bold hold the most field permit hours per recent data

Russ Halloran Sports & Recreation Complex at Albemarle

Improvement Ideas/Goals

- Developed multi-phased, multi-year improvement plans
- Some reconfigured amenities to increase multi purpose athletic field space
- Improved accessibility
- Replaced existing sports lighting at end-of-life
- Assessed park program and use needs, including:
 - Gath Pool footprint
 - school uses
 - cultural events
- Improved safe routes to schools
- Improved shade and tree canopy coverage where possible
- Improved athletic field amenities i.e dugouts, batting cages, scoreboards (with some private funding)
- Assessed feasibility of artificial turf

Approximate Construction Budget for PHASE 1: 3.2M



Albemarle
Park

Completed Steps

- Attained Community Preservation Act funding for design/engineering work
- Prepared Request for Qualifications and advertised bid for designer

Next Steps

- Designer Selection Committee chooses design firm
- Coordinate with Pool Project Leadership Team
- Preliminary field design/ layout developed based on community input
- Share field project concepts with the public

A wide-angle photograph of a soccer field at Newton Highlands Playground in Newton, Massachusetts. The field is green and well-maintained, with several soccer goals visible. In the background, there are trees and a large white house. The sky is overcast and grey. The text "Questions and Discussion" is overlaid in the center of the image.

Questions and Discussion

For additional questions and input please contact: athleticfields@newtonma.gov