

STAMP

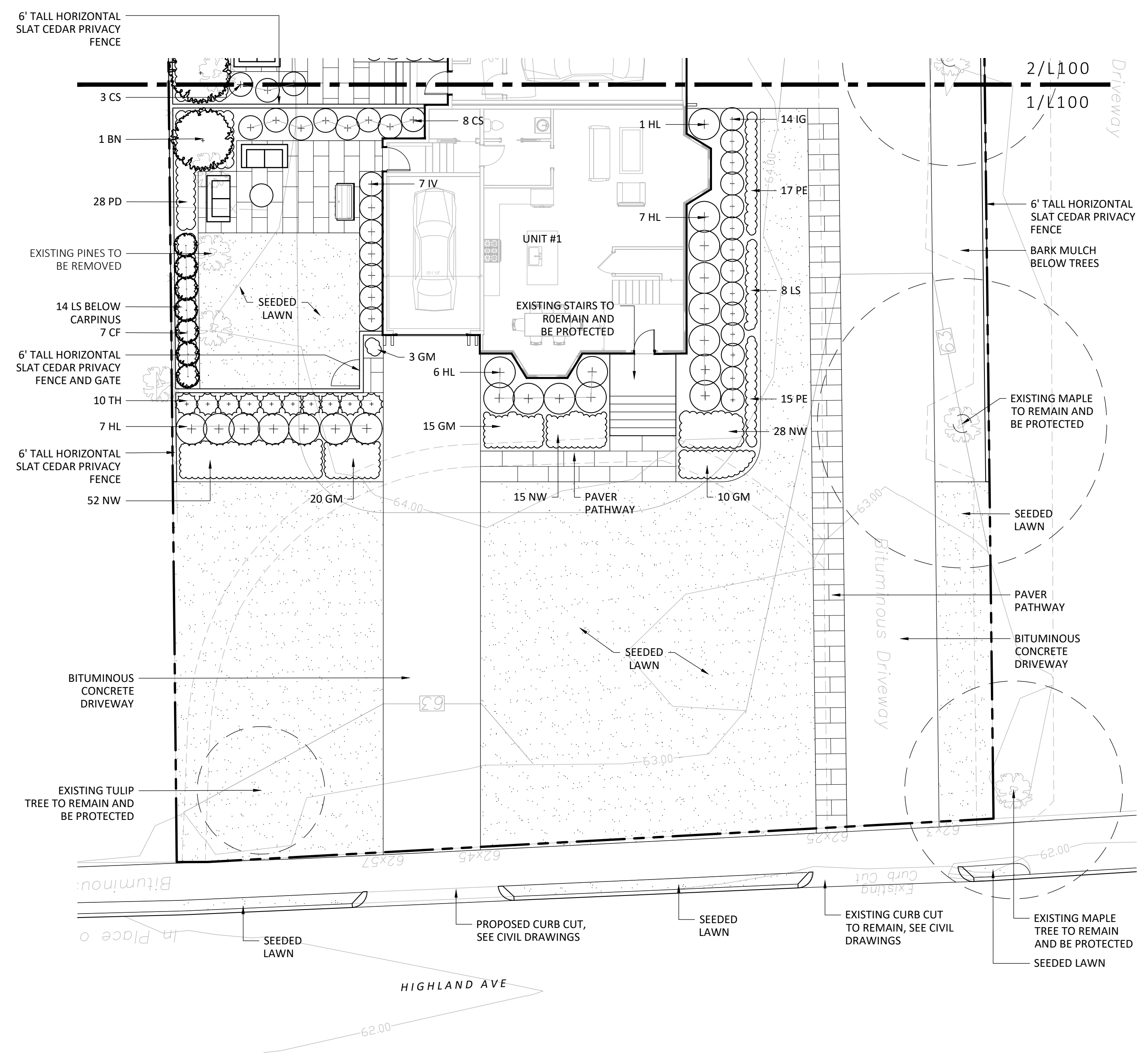


REV. NO.	DATE	DESCRIPTION

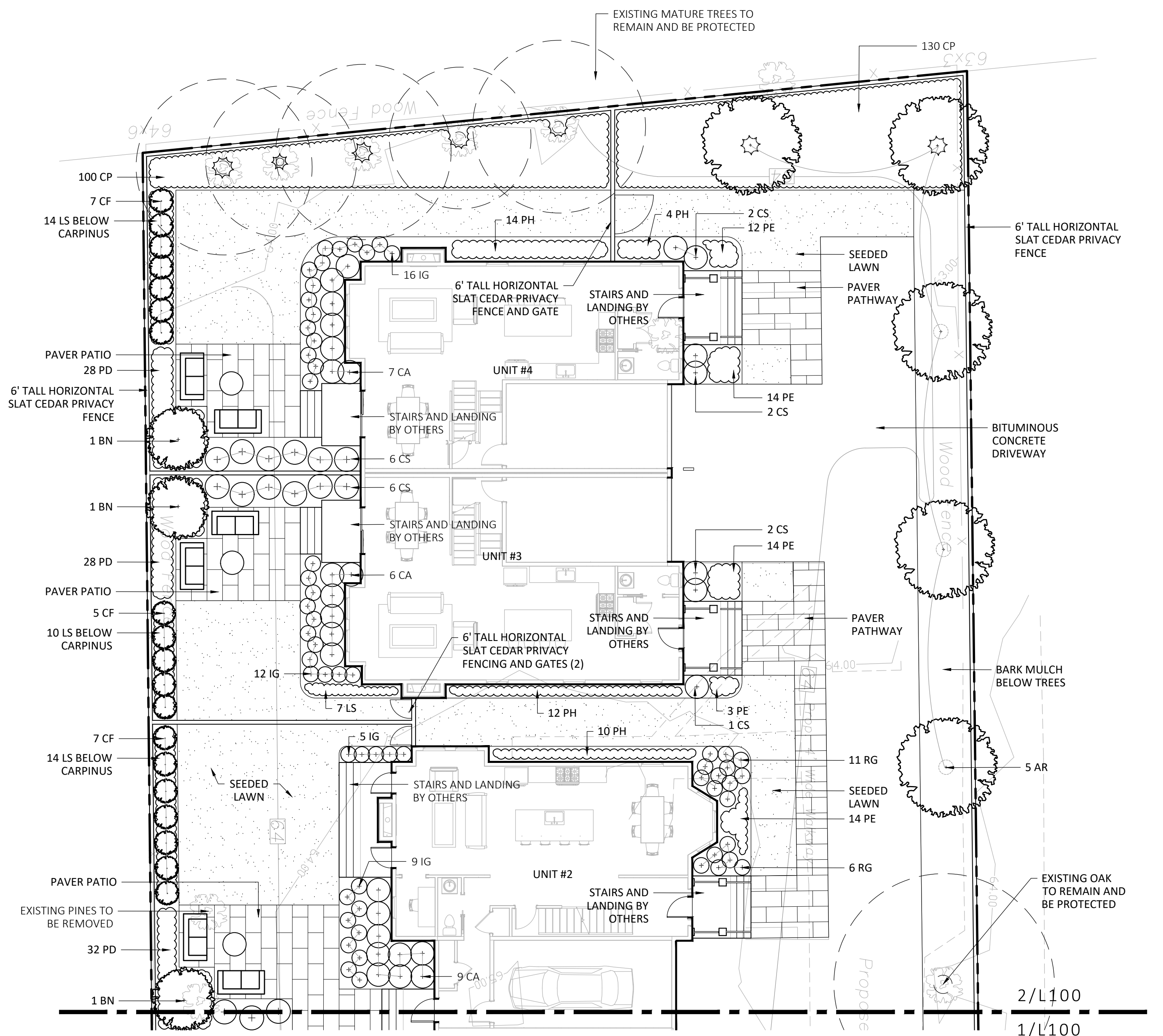
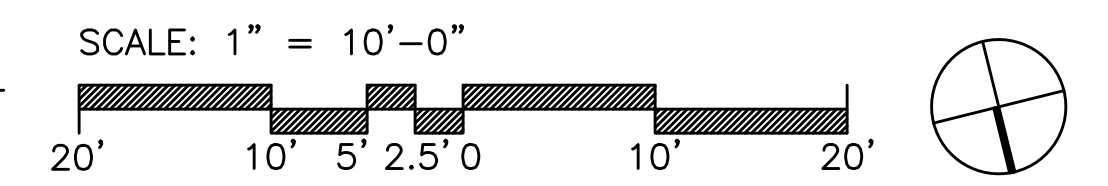
LANDSCAPE
PLANTING
PLAN

DRAWN	L100
CHECKED	
SCALE AS NOTED	
DATE 9/9/21	

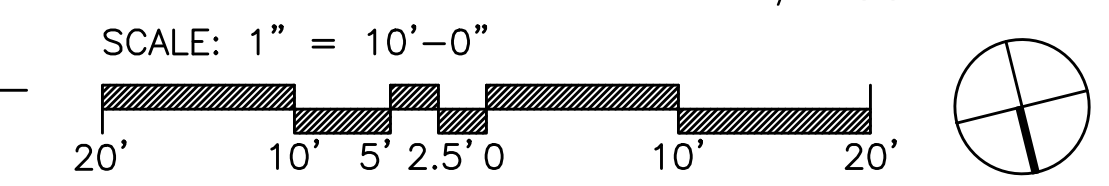
NOT FOR
CONSTRUCTION



1 PLANTING PLAN - NORTH
SCALE: 1" = 10'-0"

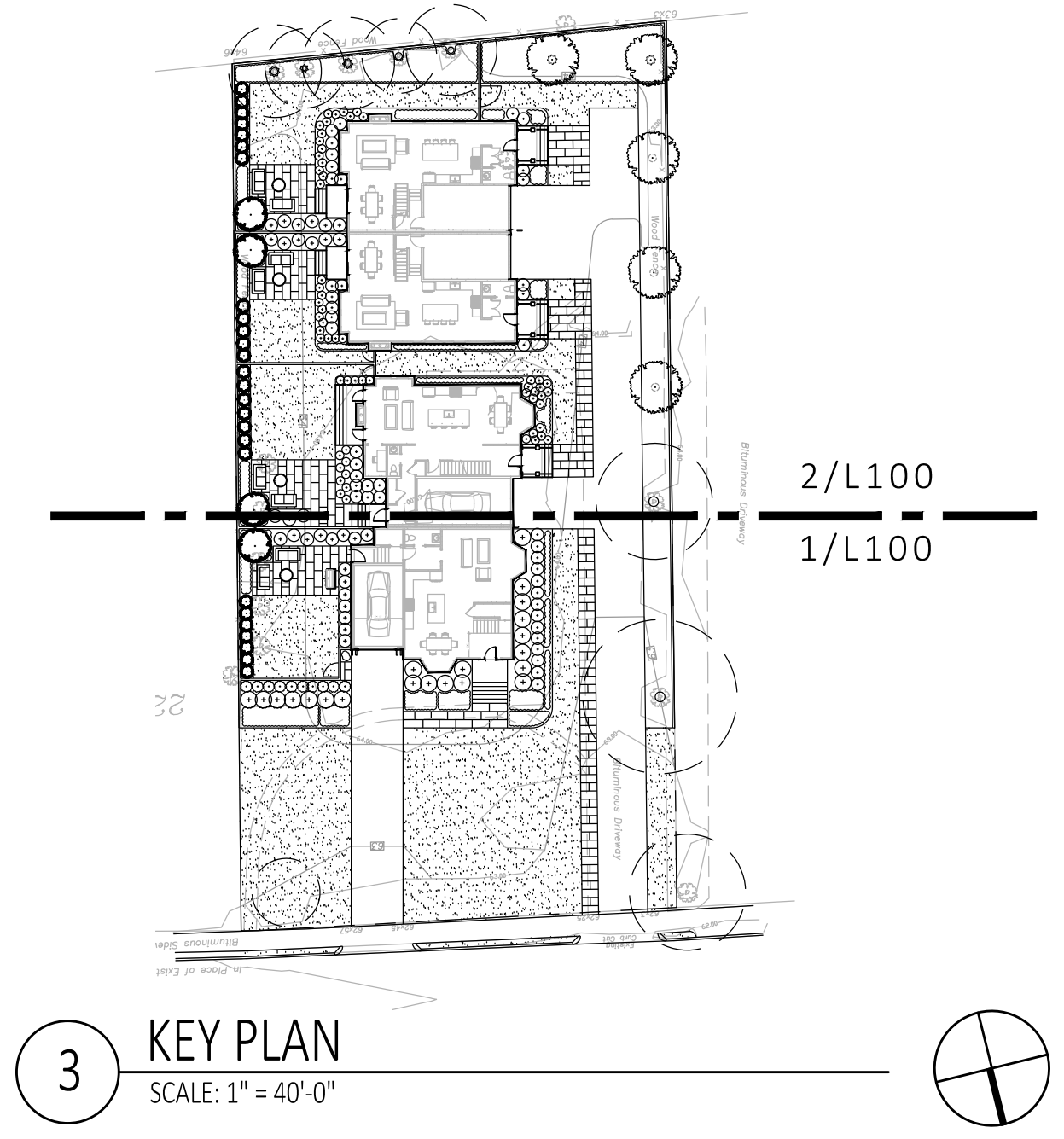


2 PLANTING PLAN - SOUTH
SCALE: 1" = 10'-0"

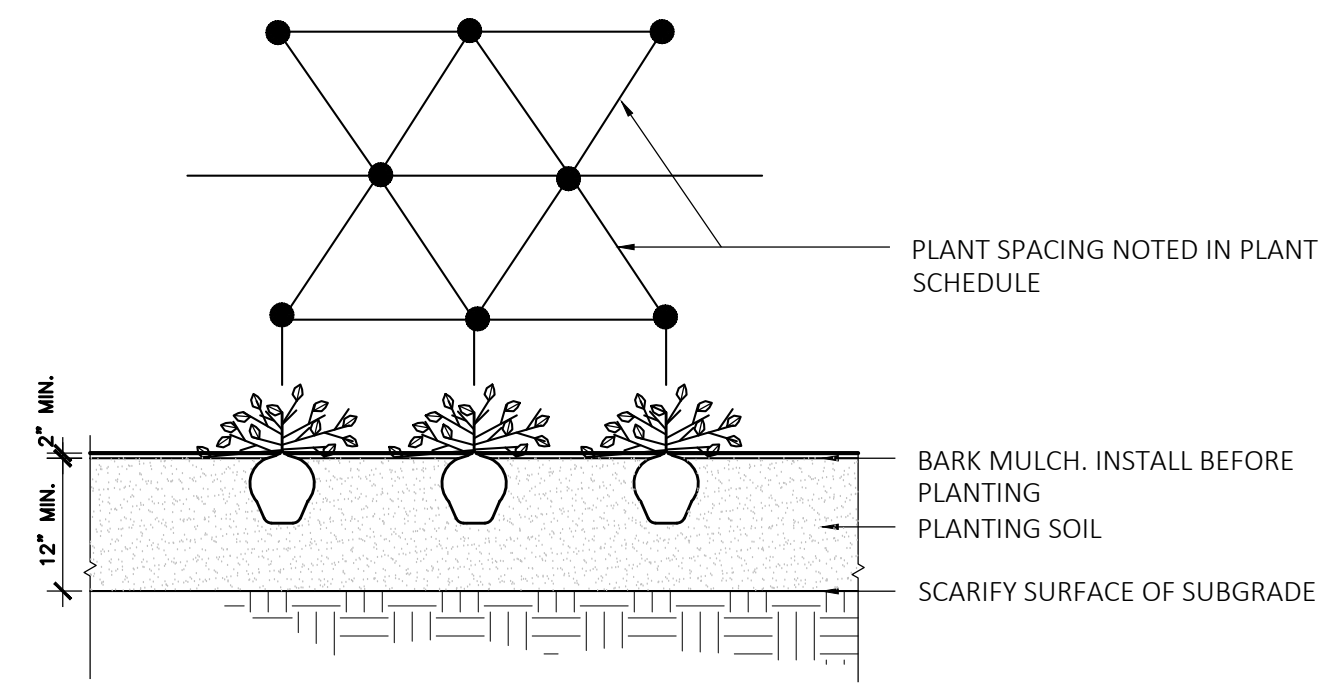


- PLANTING:
- DURING CONSTRUCTION, PROTECT ALL EXISTING SITE FEATURES, STRUCTURES AND UTILITIES.
 - PLANTS SHALL BE TRUE TO SPECIES AND VARIETY SPECIFIED AND NURSERY GROWN IN ACCORDANCE WITH THE AMERICAN STANDARD FOR NURSERY STOCK UNDER CLIMATIC CONDITIONS SIMILAR TO THOSE IN THE LOCALITY OF THE PROJECT. SUBSTITUTIONS WILL BE PERMITTED ONLY IF APPROVED BY THE LANDSCAPE ARCHITECT.
 - LANDSCAPE ARCHITECT APPROVAL IS REQUIRED BEFORE PLANT MATERIAL IS PURCHASED. LANDSCAPE ARCHITECT RESERVES THE RIGHT TO SEE ALL MATERIAL IN PERSON AT THE NURSERY. IF TRAVEL OUTSIDE OF MA IS REQUIRED, LANDSCAPE ARCHITECT'S TRAVEL COSTS SHALL BE PAID FOR BY THE CONTRACTOR.
 - ALL EXPOSED BURLAP, WIRE BASKETS AND OTHER MATERIALS ATTACHED TO PLANTS SHALL BE REMOVED PRIOR TO PLANTING. CARE SHALL BE TAKEN NOT TO DISTURB THE ROOT BALL OF PLANTS.
 - THOROUGHLY WATER ALL PLANTS IMMEDIATELY AFTER PLANTING.
 - WHERE DISCREPANCIES IN QUANTITIES OCCUR, DRAWINGS SUPERCEDE PLANT NOTES AND SCHEDULE.
 - TRANSPLANTING SHALL BE DONE IN ACCORDANCE WITH THE AMERICAN STANDARD FOR NURSERY STOCK.
 - LOAM USED IN PLANT BEDS SHALL BE UNIFORM IN COMPOSITION, FREE FROM SUBSOIL, STONES LARGER THAN 1", NOXIOUS SEEDS AND SUITABLE FOR THE SUPPORT OF VEGETATIVE GROWTH. THE PH VALUE SHALL BE BETWEEN 5.5 AND 6.5.
 - MULCH IN TREE AND SHRUB BEDS SHALL BE NATURAL, NATIVE HEMLOCK MULCH FREE OF GROWTH OR GERMINATION INHIBITING INGREDIENTS. SUBMIT SAMPLES FOR APPROVAL.
 - LOCATIONS FOR PLANTS AND/OR OUTLINE OF AREAS TO BE PLANTED ARE TO BE STAKED OUT AT THE SITE FOR APPROVAL BY THE LANDSCAPE ARCHITECT.
 - SOIL DEPTHS: a.) SHRUBS AND PERENNIAL BEDS: 18" MIN.; b.) GROUND COVER: 6" MIN.; c.) TREES: PER CONSTRUCTION DETAIL; d.) SOD/SEED: 6" MIN.
 - PROVIDE A SUBSURFACE ROOTBALL ANCHOR BY PLATIPUS EARTH ANCHORS, OR APPROVED EQUAL. SIZE FOR CALIPER AND HEIGHT.

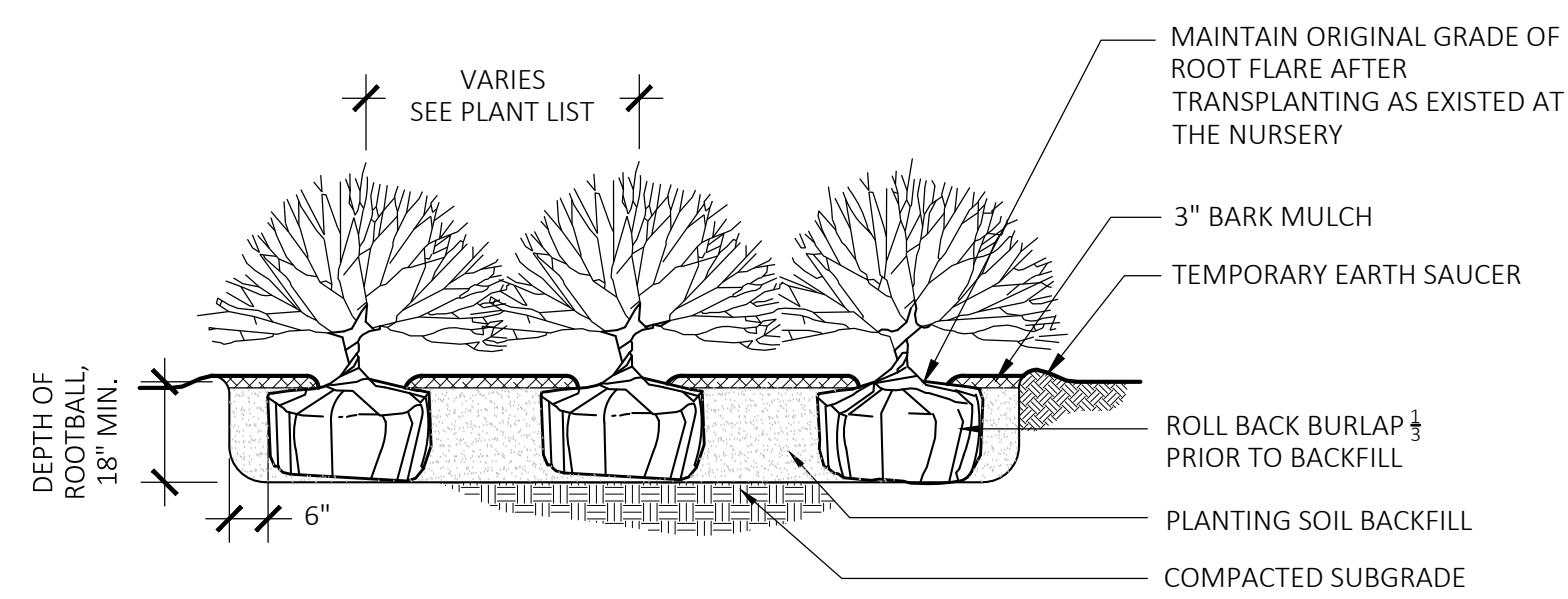
PLANT SCHEDULE					
SYMBOL	QTY.	LATIN NAME	COMMON NAME	SIZE	NOTES
TREES					
AR	5	ACER RUBRUM 'RED SUNSET'	RED SUNSET MAPLE	3.5-4" CAL.	B&B, 6' CLEAR BRANCHING
BN	4	BETULA NIGRA 'HERITAGE'	RIVER BIRCH	3" CAL. 10'-12' HT.	B&B, MULTI-STEM, SPECIMEN
CF	26	CARPINUS 'FRANS FONTAINE'	FRANS FONTAINE HORNBEAM	3" CAL. 12' HT.	B&B, BRANCH TO GROUND
SHRUBS					
CA	22	CLETHRA ALNIFOLIA	SUMMERSWEET	3 GAL	36" O.C. B&B
CS	30	CORNUS S. 'ARCTIC FIRE'	ARCTIC FIRE RED TWIG DOGWOOD	5 GAL	36" O.C. B&B
HL	21	HYDRANGEA 'LITTLE LIME'	LITTLE LIME HYDRANGEA	5 GAL	36" O.C.
IG	56	ILEX GLABRA	SHAMROCK INKBERRY	3" TALL	36" O.C.
IV	7	ILEX VERTICILLATA	WINTERBERRY	3" TALL	36" O.C.
RG	17	RHUS 'GRO LOW'	GROW LOW SUMAC	3 GAL	36" O.C. B&B
TH	10	TAXUS X MEDIA 'HICKSI'	HICKS YEW	3" TALL	24" O.C.
PERENNIALS					
CP	230	CAREX PENNSYLVANICA	PENNSYLVANIA SEDGE	2 GAL	24" O.C.
GP	48	GERANIUM MACULATUM	SPOTTED CRANESBILL	1 GAL	18" O.C.
LS	67	LIATRIS SPICATA	BLAZING STAR	2 GAL	24" O.C.
NW	98	NEPETA RACEMOSA 'WALKERS LOW'	WALKERS LOW CATMINT	1 GAL	18" O.C. CONTAINER
PD	116	PHLOX DIVARICATA	WOODLAND PHLOX	1 GAL	18" O.C.
PE	75	PENSTEMON DIGITALIS	FOXGLOVE BEARDTONGUE	1 GAL	18" O.C.
PH	40	PENSTEMON HIRSUTIS	HAIRY BEARDTONGUE	1 GAL	18" O.C.



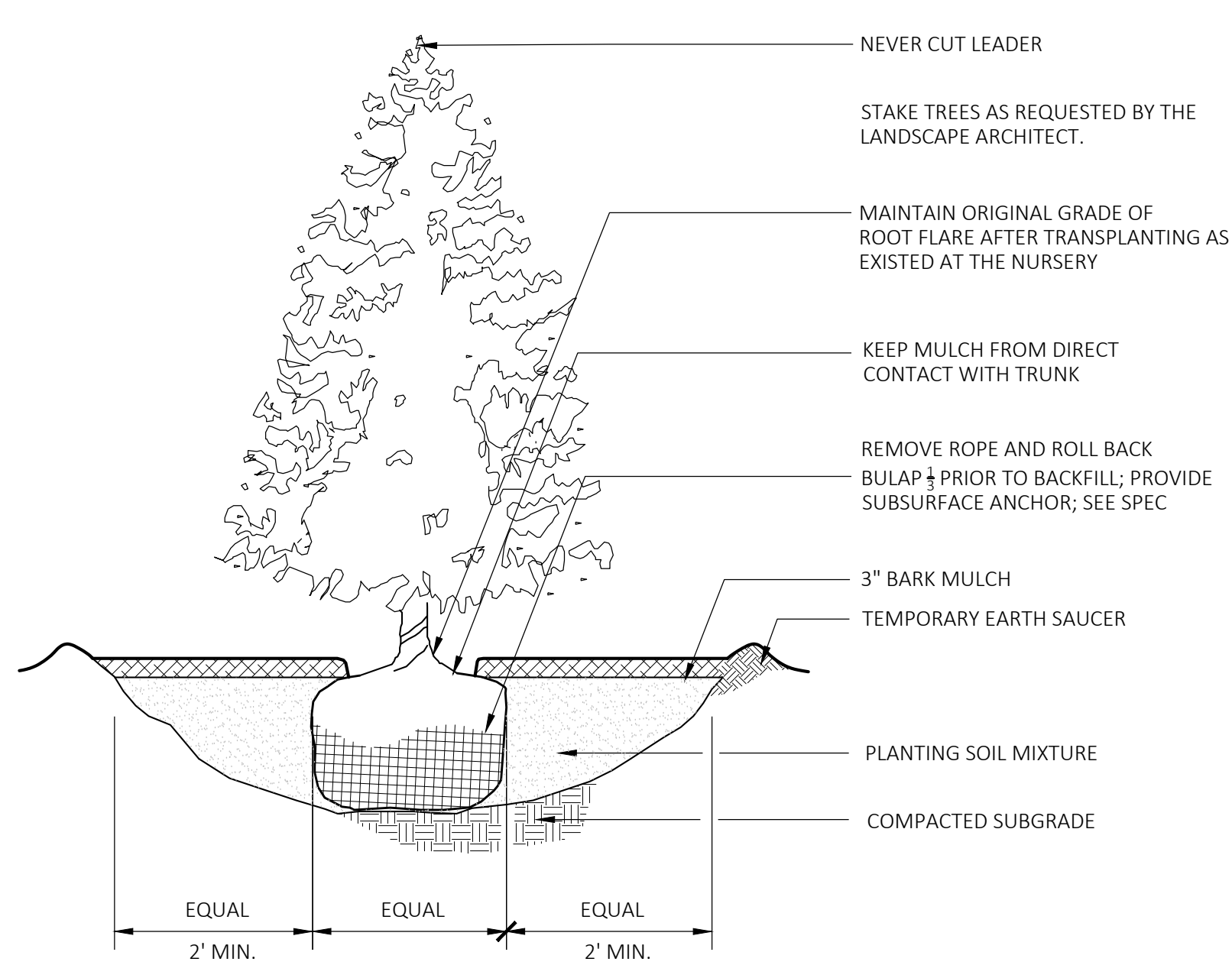
3 KEY PLAN
SCALE: 1" = 40'-0"



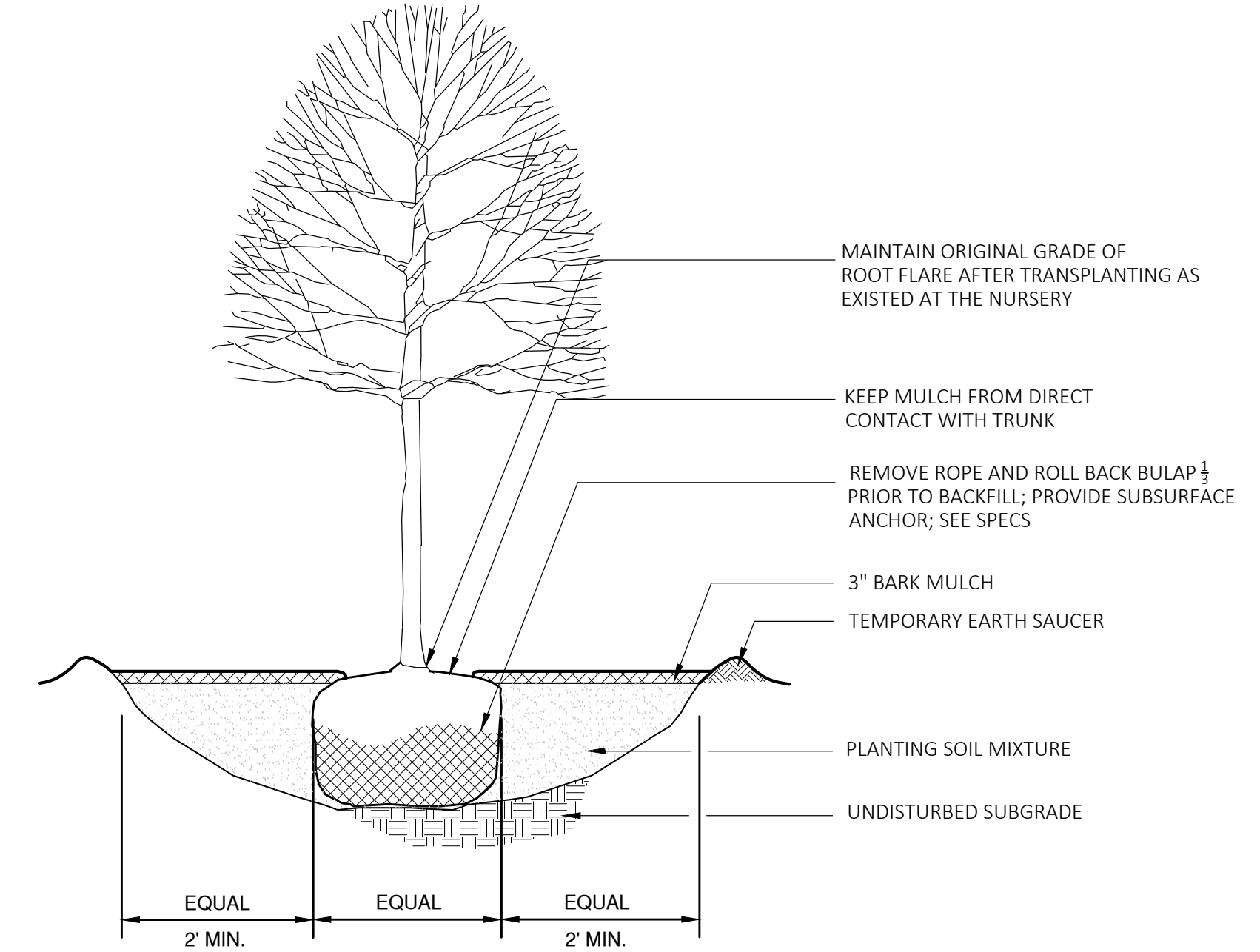
1 GROUNDCOVER PLANTING
SCALE: N.T.S.



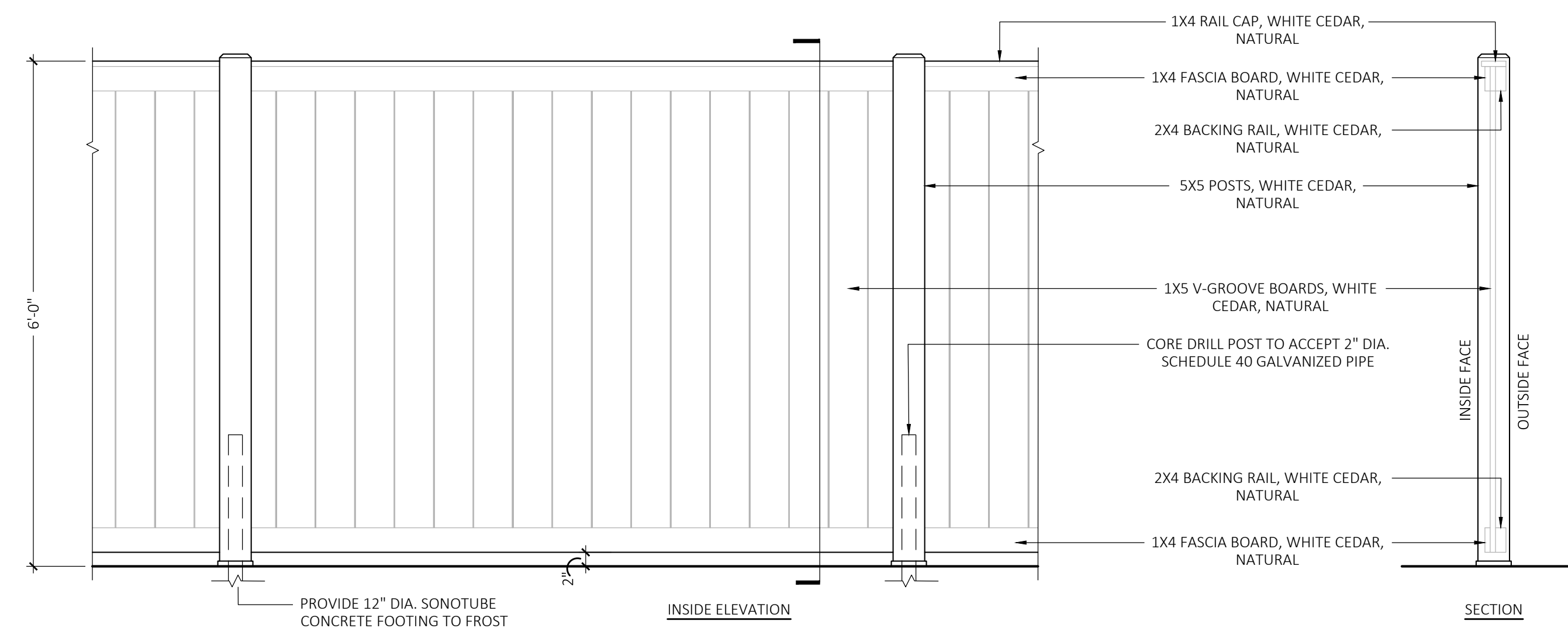
2 SHRUB PLANTING
SCALE: N.T.S.



3 EVERGREEN TREE PLANTING
SCALE: N.T.S.



5 DECIDUOUS TREE PLANTING
SCALE: N.T.S.



6 CEDAR PRIVACY FENCING
SCALE: 3/4" = 1'-0"



NOT FOR CONSTRUCTION

STAMP

REV. NO.	DATE	DESCRIPTION