



Newton Parks, Recreation + Culture Department

Athletic Fields Improvement Plan

Community Meeting # 1

Burr Elementary School Fields

October 27th, 2021

athleticfields@newtonma.gov

AGENDA

1

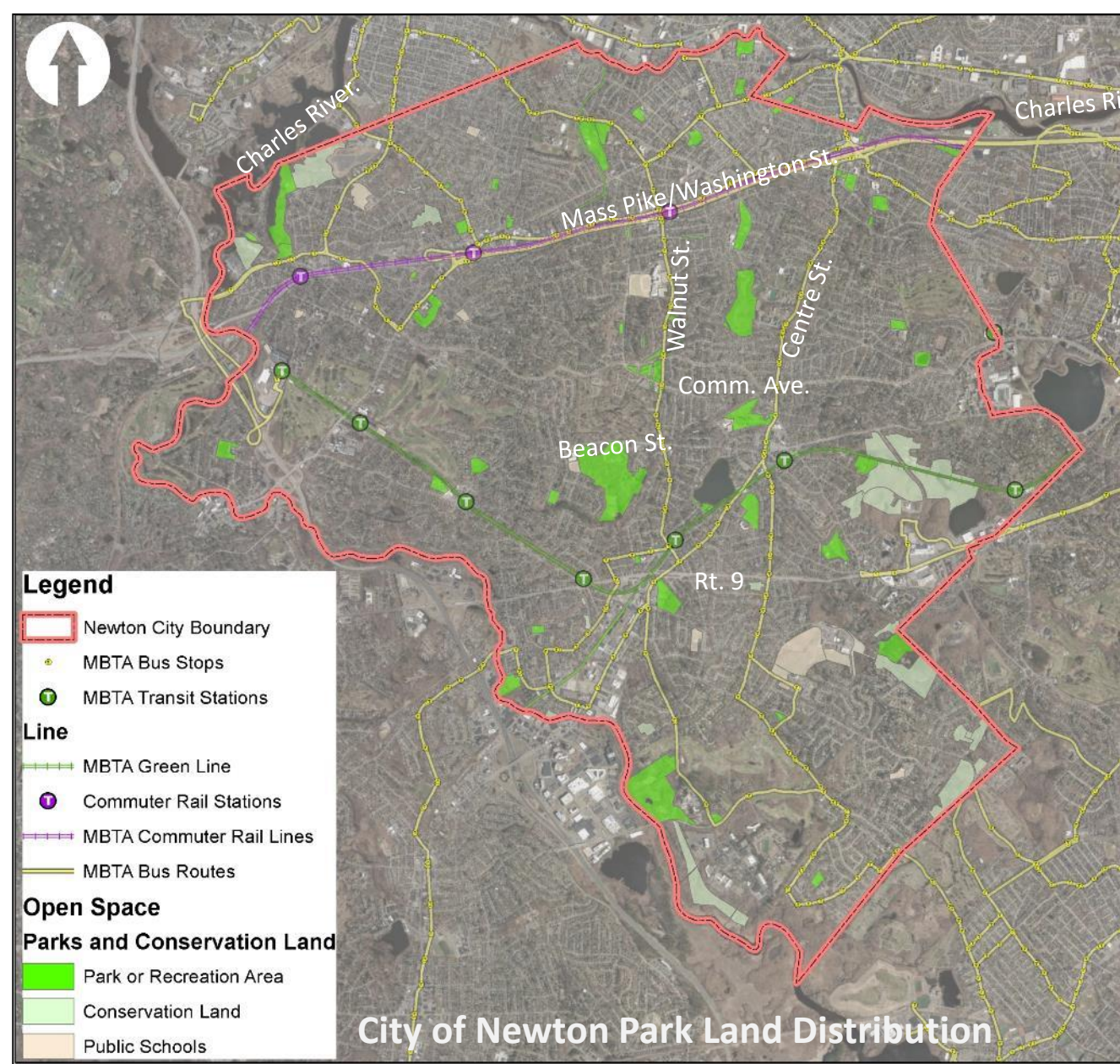
Athletic Fields Projects Overview

2

Burr Elementary School Fields Presentation

3


Burr Elementary School Fields Listening + Discussion



Parks, Recreation & Culture Overview:

- Manage and oversee nearly 600 Acres of park land with varying recreational interests including:
 - Aquatic facilities
 - Tracks + fields
 - Trails, pathways + safe routes to schools
 - Playgrounds + tot Lots
 - Field houses + community centers
 - Hard courts
 - Passive areas
 - Outdoor exercise equipment
 - Wooded areas
 - Outdoor challenge courses
 - Dog parks
 - Splash pads
 - Historic significance
 - Wetlands and waterways
- Spread across all Villages, Wards + School zones

Newton Parks, Recreation and Culture Department
Athletic Fields Capital Improvement Plan

A wide-angle photograph of a green athletic field, likely a soccer field, with several white goals and nets. The field is surrounded by trees and a large white house is visible in the background. The sky is overcast with grey clouds. The text "Why improve athletic fields?" is overlaid in the center of the image.

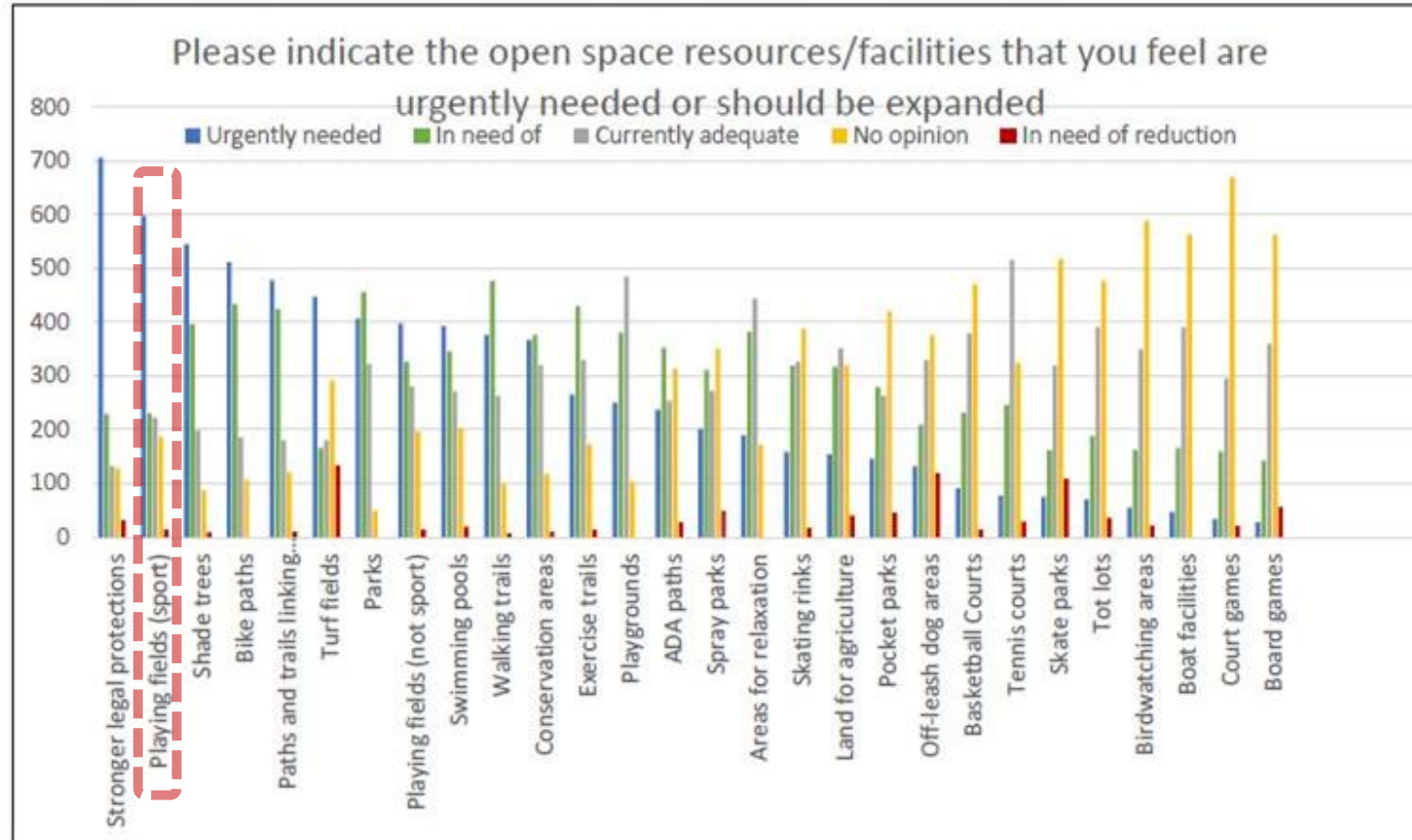
Why improve athletic fields?



Current facilities experience little to no rest time and are overused

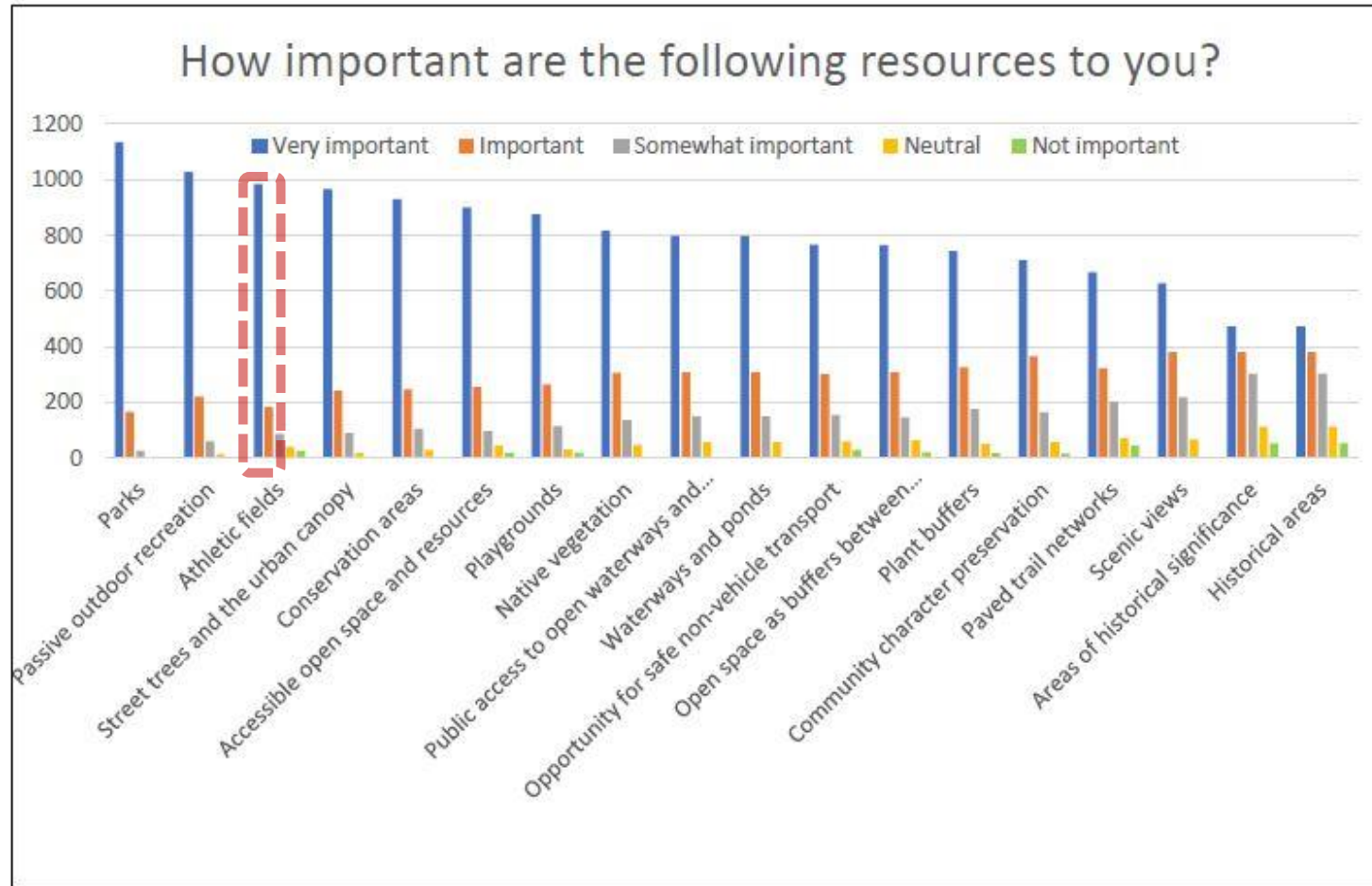
Community Survey (Open Space + Recreation Plan)

Figure 42. Community Survey: Open Space Resources in Greatest Demand




Community Survey (Open Space + Recreation Plan)

Figure 43. Community Survey: Open Space Resources in Greatest Demand



Field + Park Improvement Goals


- IMPROVE QUALITY AND QUANTITY OF USABLE MULTIUSE/MULTIPURPOSE FIELDS
- IMPROVE ACCESSIBILITY IN PARK AND FIELD AMENITIES
- ESTABLISH STANDARDIZED PARK CONSTRUCTION DETAILS TO BETTER MANAGE OPERATION & MAINTENANCE POST CONSTRUCTION
- INVEST EQUITABLY IN NEWTON'S ATHLETIC FIELDS + PARKS ACROSS THE CITY

A wide-angle photograph of a soccer field. In the foreground on the left, a white soccer goal with a net is visible. The field is green and appears to be well-maintained. In the middle ground, several sprinklers are active, spraying water across the field. In the background, there are several other soccer goals, a white house with a grey roof, and a dense line of trees. The sky is overcast with grey clouds. The text "How did we prioritize field improvements?" is overlaid in the center of the image in a bold, black, sans-serif font.

How did we prioritize field improvements?

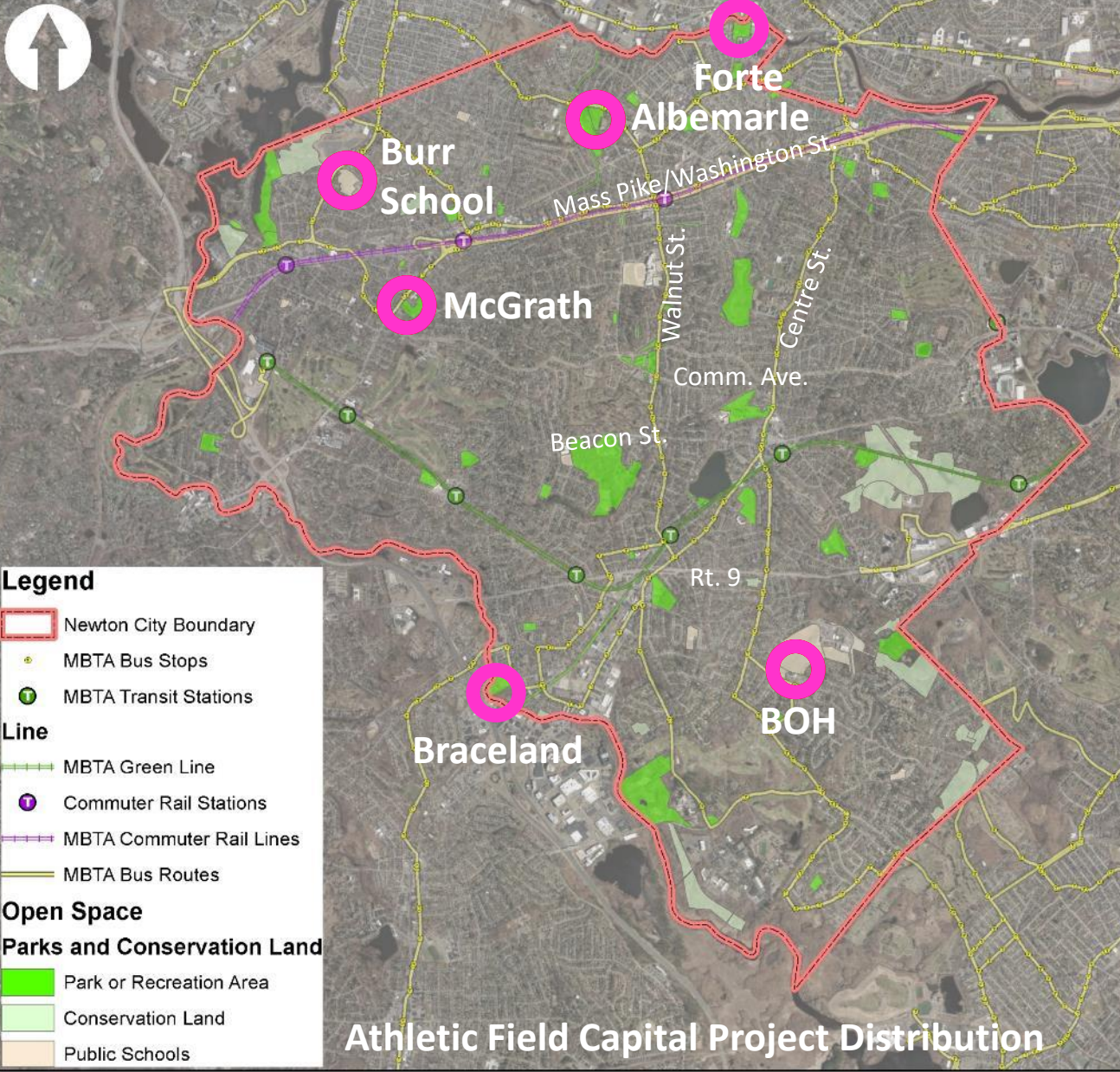
Prioritization Criteria

- OPEN SPACE & RECREATION PLAN
- CITY OF NEWTON CAPITAL IMPROVEMENT PLAN (CIP)
- POTENTIAL FOR GREATEST CITY-WIDE BENEFIT
- PROJECT SEQUENCING: PRIORITIZE NEW FIELDS BEING BROUGHT ONLINE FIRST
- POTENTIAL FOR EXPANSION OF MULTIUSE FIELDS
- EXPANDING EVENING PLAY (LIGHT IMPROVEMENTS/ ADDITIONS)
- PLAYER SAFETY
- INTEGRATED WITH OTHER PROJECTS IN A PARK AREA (E.G., PATH AT MCGRATH, GATH POOL PROJECT)

A wide-angle photograph of a soccer field. In the foreground on the left, a white soccer goal with a net is visible. The field is green and appears to be well-maintained. In the middle ground, there are several other soccer goals and stadium lights. The background is filled with dense green trees and a white house with a grey roof. The sky is overcast with grey clouds. The text "How do we arrive at a viable project design?" is overlaid in the center of the image.

How do we arrive at a viable project design?





Phase 1 Capital Project Distribution:

- Albemarle Park/ Russ Halloran Sports and Recreation Complex
- Forte Park
- Burr School
- Brown/Oak Hill Fields
- McGrath Park
- Bobby Braceland

TOTAL: 6 Sites

Newton Parks, Recreation and Culture Department
Athletic Fields Capital Improvement Plan

Additional Athletic Field Projects in the works:

- NNHS Tiger Stadium: High efficiency, low spillage Sports Lighting project (FY 23)
- NSHS Winkler Stadium & Brandeis Rd. Field: Artificial turf carpet replacement (FY 23)
- NSHS Brandeis Road Field: High efficiency, low spillage Sports Lighting project (FY 23)
- NNHS: Tiger Stadium: Artificial turf carpet replacement (FY 25)
- Forte Park: Developer-funded sports relighting (TBD)
- Increased Maintenance: additional seeding, fertilizing, and aeration, etc.

CITY OF NEWTON ATHLETIC FIELDS MAINTENANCE BUDGET
IMPROVEMENTS

- **Increase athletic field maintenance capabilities**
- **Increase scope of contractual maintenance work**
- **Significantly increase turf management capabilities**

Public Grounds Maintenance Budget					
Maint. Budget Expense Item	General Description	Fiscal Year 2021	Fiscal Year 2022	Budget Increase in Dollars	Budget Increase Percentage
Turf Mowing	Mowing	\$ 575,000	\$ 700,000	\$ 125,000	22%
	Leaf removal				
	Mulching				
	Pruning				
Turf Management	Aerification	\$ 75,000	\$ 250,000	\$ 175,000	233%
	Fertilization				
	Slice seeding				
	Top dressing				
	Integrated Pest Management (IPM)				

An aerial photograph of Burr Elementary School and its surrounding area. The school building is a large, light-colored structure with a flat roof, located in the lower-left quadrant. To its right and slightly north is a large, green, rectangular field, likely a sports field. The area is surrounded by residential streets, including Lexington St and Pine St. The text "Burr Elementary School Fields" is overlaid in white, underlined font across the center of the image. Other labels include "Lexington St", "Pine St", "Orrie St", "Standard St", "Vincent Mastroianni Landscaping", and "Ivy Dr".

Burr Elementary School Fields

Burr Elementary School

Vincent Mastroianni
Landscaping

Burr School

10.1 ACRES

Ward: 4

Village: Auburndale

Existing Amenities

- 1 little league
- 1 t-ball
- playground
- community garden
- 57 parking spaces (3 ADA)
- walking path
- 1 full-size soccer
- 1 full-sized LAX



Burr Elementary School Fields Key Athletic and Facility Stake Holder Data

Facility Name	Non-permitted stake holders	Key Permitted Stake Holders					
		Spring Users (April-June)	Total Spring Permitted Hours	Summer Users (July-August)	Total Summer Permitted Hours	Fall Users (Sept. - November)	Total Fall Permitted Hours
Burr School	Burr school students, playground users, passive users, potentially dog owners, runners and general field users, safe route to school	Newton Public Schools; Newton Girls Softball; Newton Youth Soccer; Newton Girls Soccer ; Burr PTO; NNHS Ultimate Frisbee	657 hours		0 hours	Newton Public Schools; Newton Youth Soccer; Newton Girls Soccer	253 hours

Athletic Stake Holder Groups highlighted in Bold hold the most field permit hours per recent data

Burr Elementary School Fields

Improvement Ideas/Goals

- Maximize field and site layout to increase permitted field space
- Improve accessibility (Perimeter walking path)
- Improve site furniture offerings (bike racks, benches and drinking fountains)
- Assess potential environmental impacts of developing the fields
- Regrade and properly develop multipurpose field area to meet current athletic field surface specifications and standards
- Improve field drainage
- Install Irrigation
- Reconfigure safe routes to school pathway and 4c tree plantings
- Increase tree canopy coverage where possible

Approximate Construction Budget: \$500,000

Completed Steps

- Attained Community Preservation Act funding for design/engineering work
- Prepared Request for Qualifications and advertised bid for designer

Next Steps

- Designer Selection Committee chooses design firm
- Preliminary field design/ layout developed based on community input

Questions and Discussion

For additional questions and input please contact: athleticfields@newtonma.gov

For Presentation, Chat, recordings and meeting recordings, please got to <https://www.newtonma.gov/government/parks-recreation-culture/parks-open-space>

