

# Buildings 1 & 2

RIVERSIDE

JANUARY 12, 2022

COMPARISON:  
AUGUST 10, 2021 SPECIAL PERMIT PRESENTATION  
& JANUARY 5, 2022 SCHEMATIC PLANS PRESENTATION



MARK  
DEVELOPMENT

ELKUS | MANFREDI  
ARCHITECTS



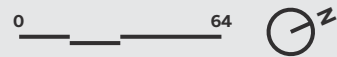
BUILDINGS 1 & 2  
*Riverside*

NEIGHBORHOOD PLAN  
AUGUST 10, 2021





BUILDINGS 1 & 2  
Riverside



RESEARCH SQUARE  
AUGUST 10, 2021





BUILDINGS 1 & 2  
Riverside



Rendered Site Plan with Level 1  
JANUARY 5, 2022



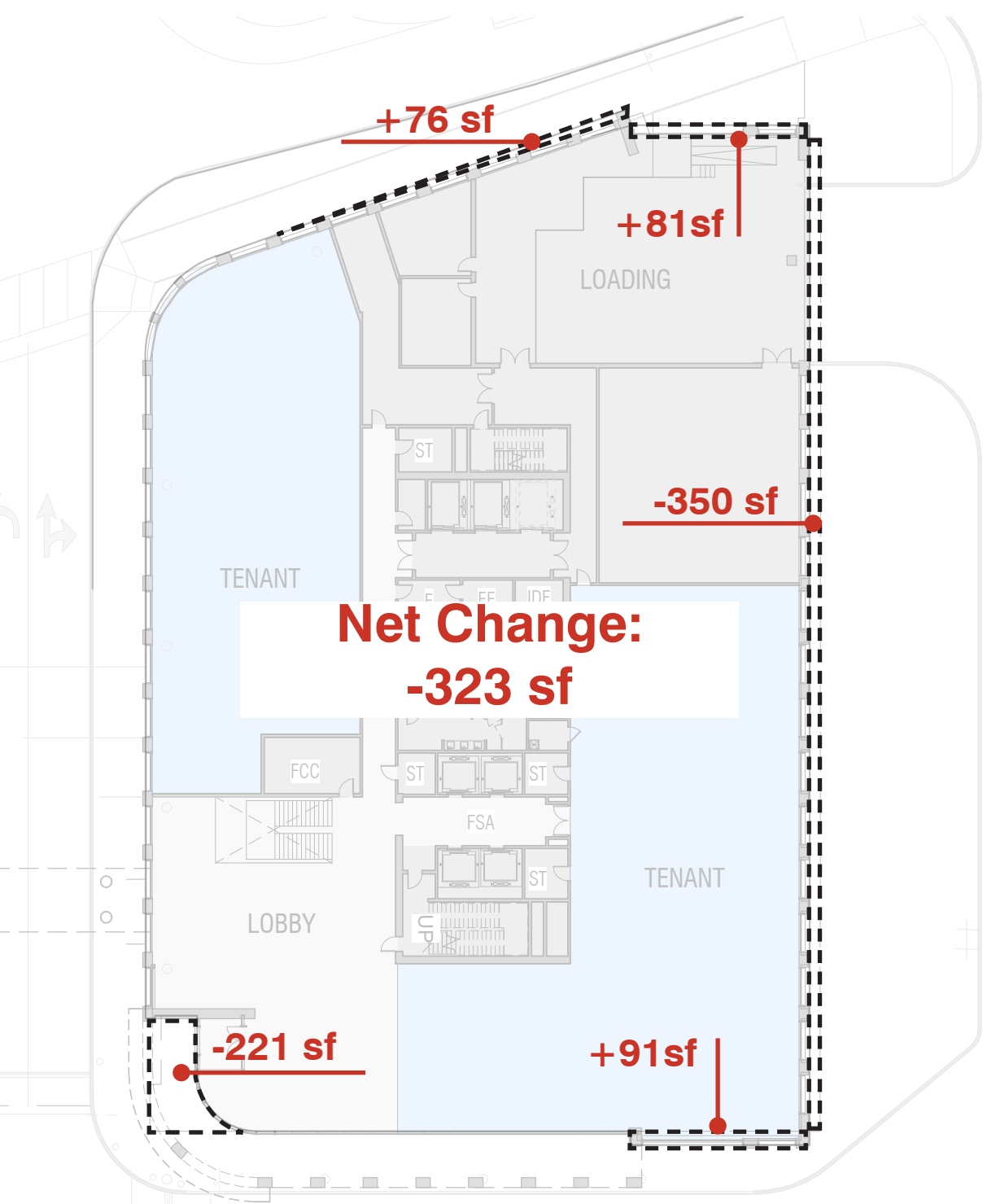
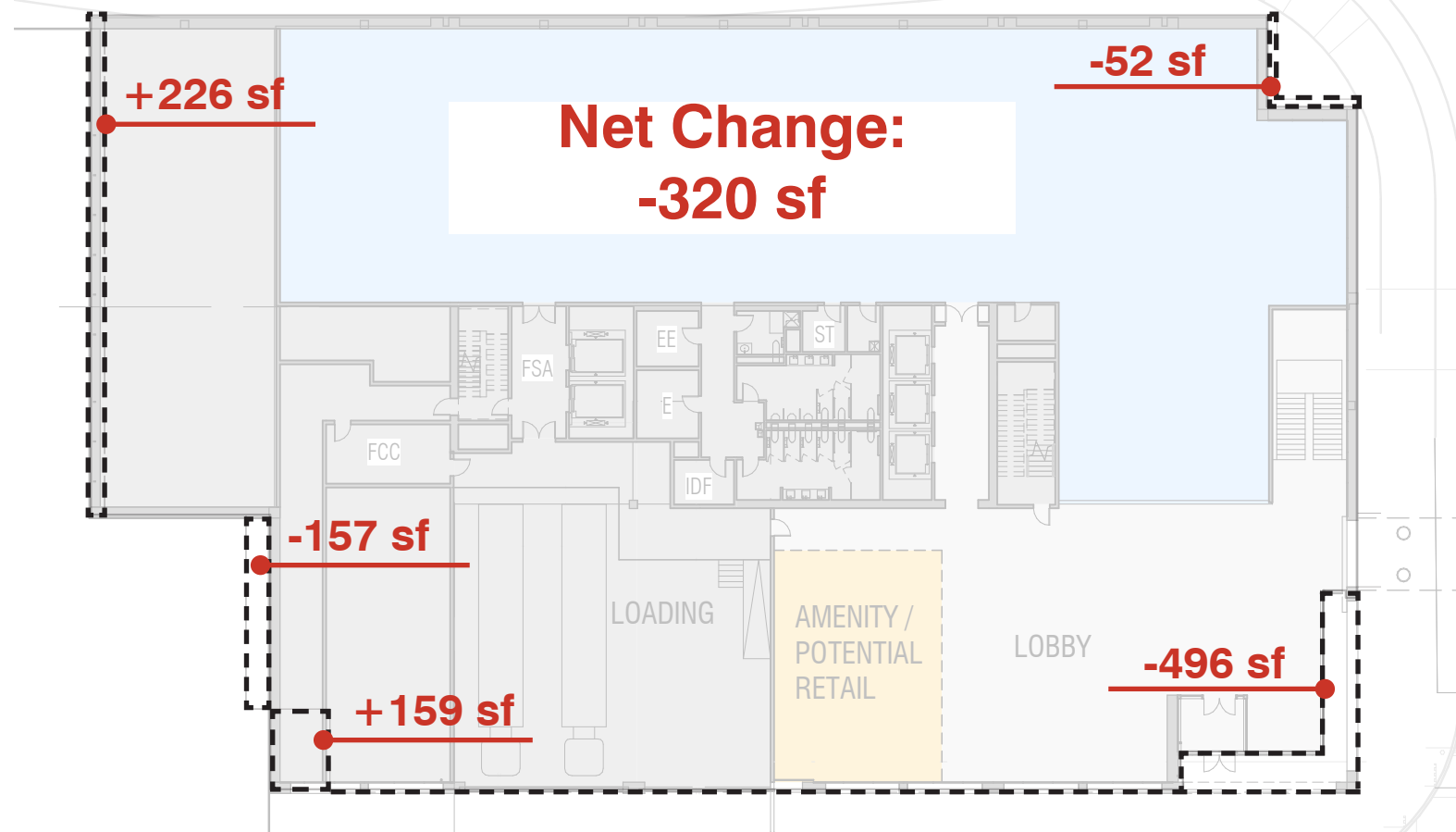
- introduction of double-height terraces and building amenity spaces at Level 3



- expansion of Building 2 penthouse enclosure
- introduction of serpentine perforated-metal enclosure at Building 2 upper penthouse

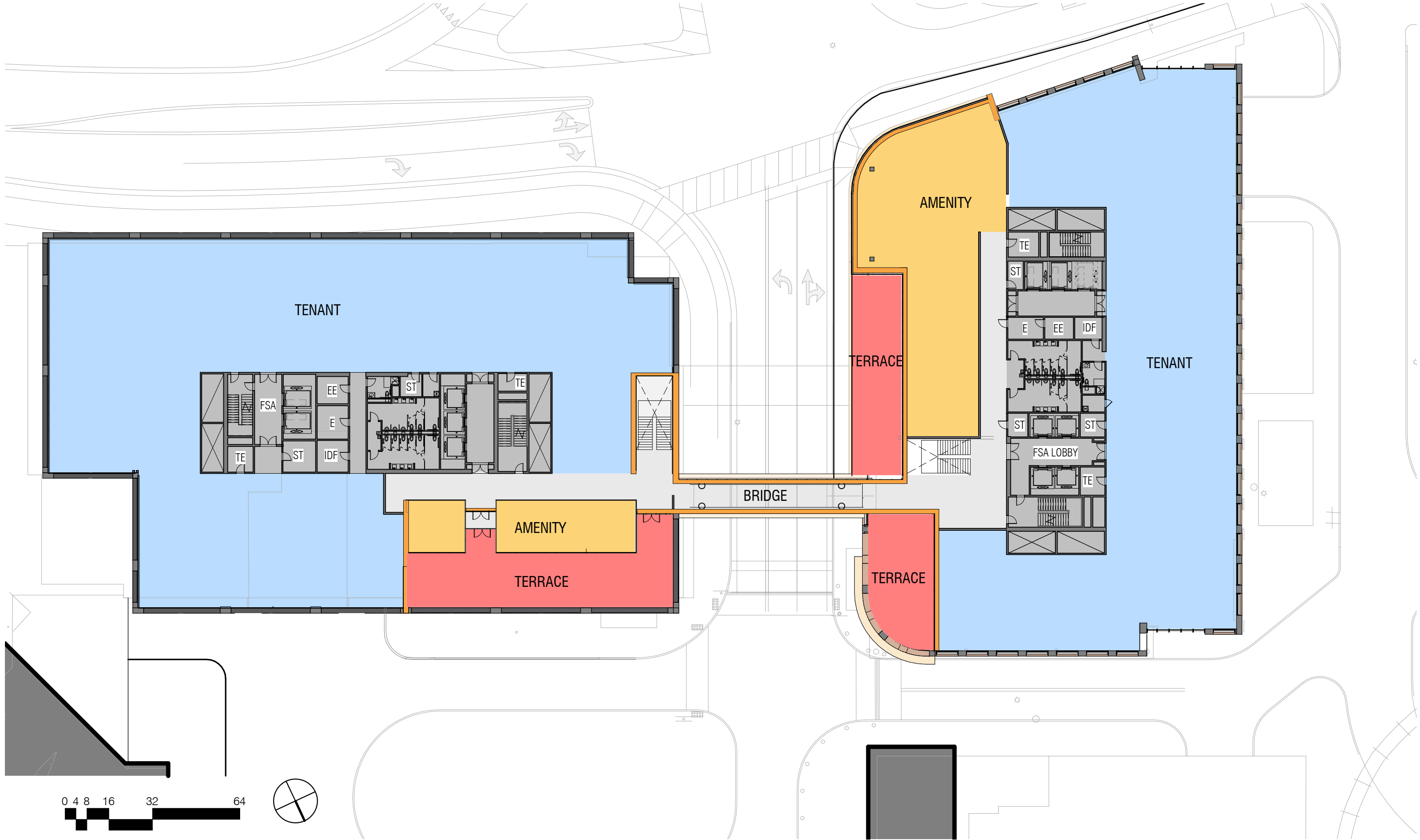


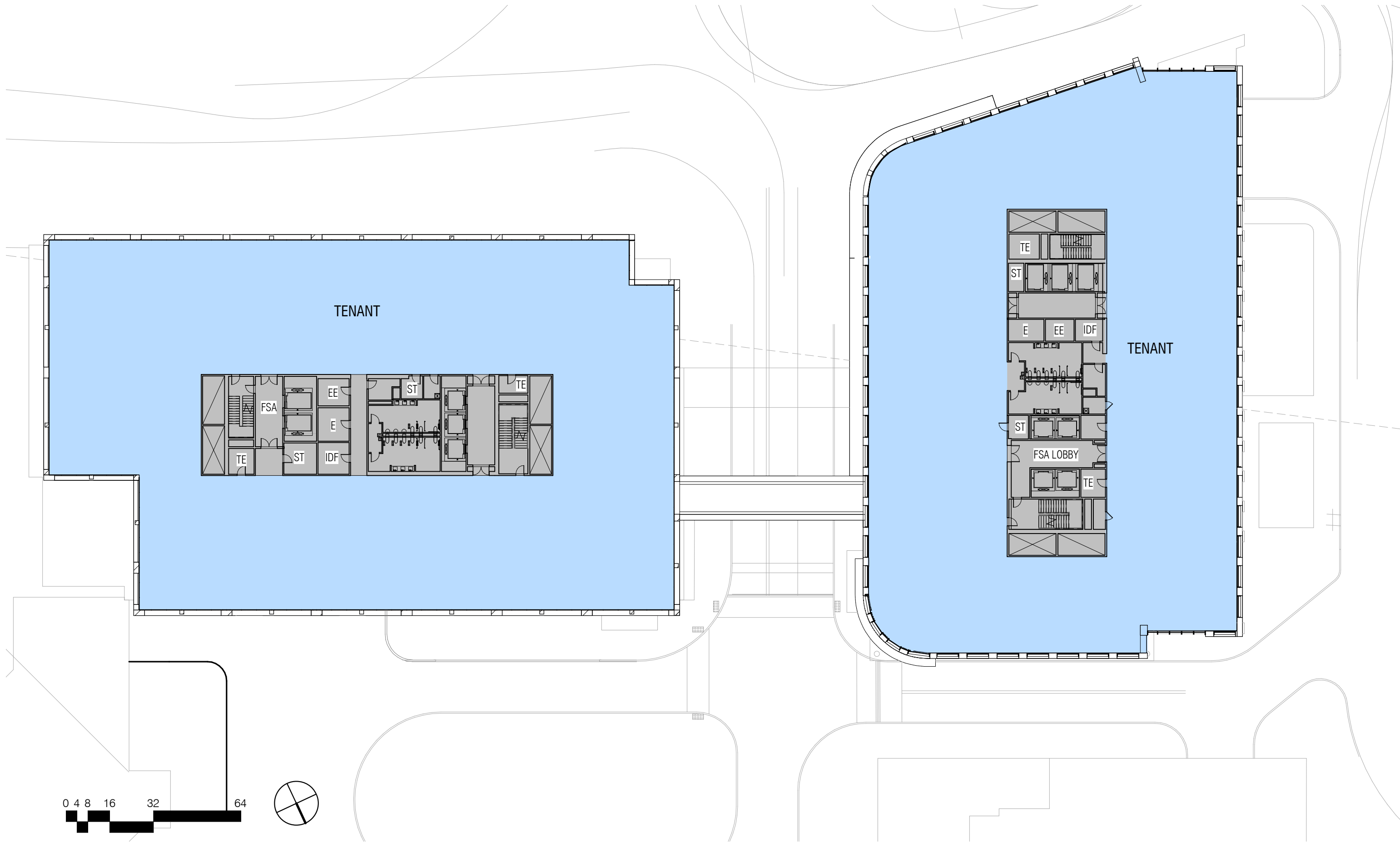
- Level 1 footprint adjustments result in minor reduction in site coverage at each building













© ELKUS MANFREDI ARCHITECTS

BUILDINGS 1 & 2  
Riverside

DRIVING NORTH ON 128  
AUGUST 10, 2021

  
ALEXANDRIA®

**MARK**  
DEVELOPMENT

ELKUS | MANFREDI  
ARCHITECTS

- change in cladding material at Building 1 to off-white terra cotta frame
- relocation and aggregation of exterior terraces to Level 3 (double-height)
- elimination of externally expressed cross bracing at Building 2
- introduction of serpentine perforated-metal screen at Building 2 upper penthouse





BUILDINGS 1 & 2  
*Riverside*

MAIN STREET ENTRY FROM FRONTAGE ROAD  
AUGUST 10, 2021





© ELKUS MANFREDI ARCHITECTS

BUILDINGS 1 & 2  
Riverside

Perspective  
JANUARY 5, 2022





BUILDINGS 1 & 2  
*Riverside*

WEST ELEVATION  
AUGUST 10, 2021





- change in cladding material at Building 1 to off-white terra cotta frame
- relocation and aggregation of exterior terraces to Level 3 (double-height)
- elimination of externally expressed cross bracing at Building 2
- introduction of serpentine perforated-metal screen at Building 2 upper penthouse

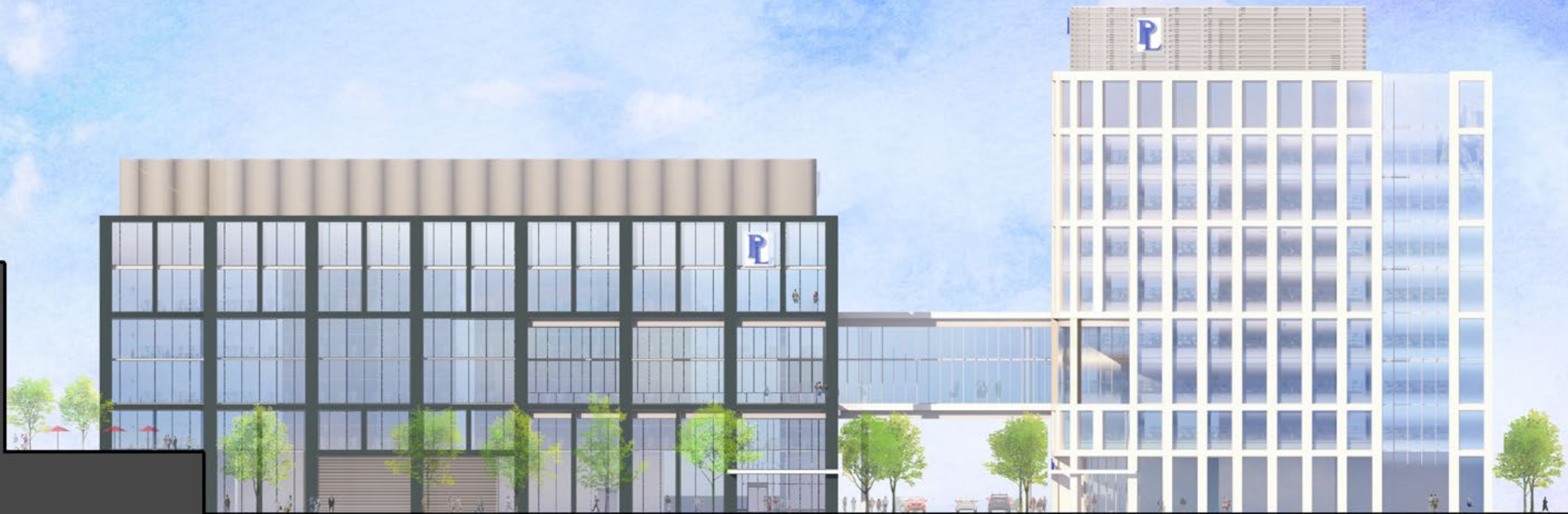




BUILDINGS 1 & 2  
*Riverside*

EAST ELEVATION  
AUGUST 10, 2021





- change in cladding material at Building 1 to off-white terra cotta frame
- relocation and aggregation of exterior terraces to Level 3 (double-height)
- elimination of externally expressed cross bracing at Building 2
- introduction of serpentine perforated-metal screen at Building 2 upper penthouse



© ELKUS MANFREDI ARCHITECTS

BUILDINGS 1 & 2  
Riverside

RESEARCH SQUARE  
AUGUST 10, 2021

  
ALEXANDRIA®

**MARK**  
DEVELOPMENT

**ELKUS | MANFREDI**  
ARCHITECTS



© ELKUS MANFREDI ARCHITECTS

BUILDINGS 1 & 2  
Riverside

Research Square  
JANUARY 5, 2022



ELKUS | MANFREDI  
ARCHITECTS



© ELKUS MANFREDI ARCHITECTS

BUILDINGS 1 & 2  
*Riverside*

BUILDING ENTRANCES FROM RESEARCH SQUARE  
AUGUST 10, 2021

  
ALEXANDRIA®

**MARK**  
DEVELOPMENT

**ELKUS | MANFREDI**  
ARCHITECTS



BUILDINGS 1 & 2  
Riverside

Perspective  
JANUARY 5, 2022



ELKUS | MANFREDI  
ARCHITECTS

