



Ruthanne Fuller  
Mayor

# CITY OF NEWTON, MASSACHUSETTS

City Hall  
1000 Commonwealth Avenue, Newton, MA 02459-1449  
Telephone: (617) 796-1120 TDD/TTY: (617) 796-1089 Fax: (617) 796-1086  
[www.newtonma.gov](http://www.newtonma.gov)

## ZONING BOARD OF APPEALS

**To:** Zoning Board of Appeals Members  
**From:** Heather Zaring, Interim Clerk  
**Date:** January 25, 2022  
**Subject:** Materials for **January 26, 2022** Public Hearing

---

### Packet 2

Hello,

Please see the following supplemental materials for the upcoming hearing on January 26, 2022 Public Hearing. The following board members are scheduled to sit: *Brooke Lipsitt (Chair), William McLaughlin, Denise Chicoine, Michael Rossi, Stuart Snyder and Michael Quinn (Alternate).*

1. Revised pages A200 and A200P for 15 Riverdale Avenue Insubstantial Change Request (submitted 1/24/22)

Thank you,

Heather Zaring

[hzaring@newtonma.gov](mailto:hzaring@newtonma.gov) |



# THE RESIDENCES ON THE CHARLES

BUILDING 1: 2 LOS ANGELES ST.  
BUILDING 2: 4 LOS ANGELES ST.

NEWTON MASS 02459  
CREATION CONSULTING COMPANY, LLC

ARCHITECT

**E-ICON**  
ARCHITECTURE

101 SUMMER ST BOSTON MA 02110

CONSULTANT

STAMP

KEY PLAN

6	12/06/2021	BULLETIN #6
3	09/03/2021	BULLETIN #3
NO.	DATE	DESCRIPTION

PROJECT NUMBER: 218007  
DRAWN BY: Author  
CHECKED BY: Checker

SHEET TITLE

OVERALL ELEVATIONS

A-200



1 BLDG 1 - NORTH ELEVATION (RIVERFRONT)  
1" = 20'-0"



2 BLDG 1 - SOUTH ELEVATION (MIDLAND AVE.)  
1" = 20'-0"



3 BLDG 1 - EAST ELEVATION (RIVERDALE AVE)  
1" = 20'-0"



4 BLDG 1 - WEST ELEVATION  
1" = 20'-0"

**EXTERIOR MATERIAL LEGEND**

1 CONCRETE	5 FIBER CEMENT - 7" LAP SIDING	9 CORRUGATED METAL PANEL
2 BRICK	6 METAL SHINGLES STAGGERED	10 SQUARE CHANNEL SIDING
3 STONE VENEER	7 FIBER CEMENT - 5" LAP SIDING	11 COMPOSITE METAL PANEL
4 CAST STONE HEAD/SILL	8 FIBER CEMENT - 5" LAP SIDING	



5 BUILDING 2 - WEST ELEVATION (LOS ANGELES STREET)  
1" = 20'-0"



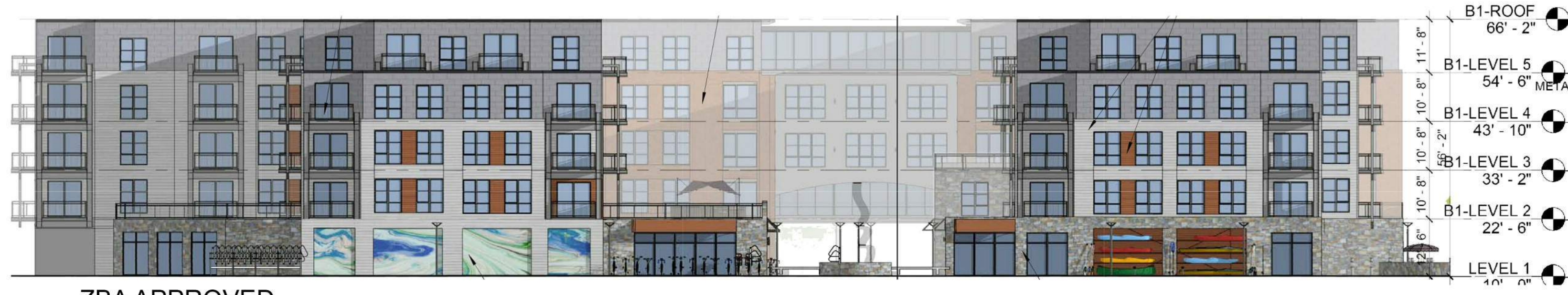
6 BUILDING 2 - NORTH ELEVATION (MIDLAND AVENUE)  
1" = 20'-0"

WINDOW & STOREFRONT REVISIONS

12/17/2021 1:54:28 PM



1 BLDG 1 - NORTH ELEVATION (RIVERFRONT)  
1" = 20'-0"



ZBA APPROVED



PROPOSED CHANGES

2 BLDG 1 - SOUTH ELEVATION (MIDLAND AVE.)  
1" = 20'-0"



ZBA APPROVED



PROPOSED CHANGES

3 BLDG 1 - EAST ELEVATION (RIVERDALE AVE.)  
1" = 20'-0"



ZBA APPROVED



PROPOSED CHANGES

4 BLDG 1 - WEST ELEVATION  
1" = 20'-0"



ZBA APPROVED



PROPOSED CHANGES

5 BUILDING 2 - WEST ELEVATION (LOS ANGELES STREET)  
1" = 20'-0"



ZBA APPROVED

6 BUILDING 2 - NORTH ELEVATION (MIDLAND AVENUE)  
1" = 20'-0"



ZBA APPROVED



PROPOSED CHANGES



PROPOSED CHANGES

EXTERIOR MATERIAL LEGEND

- |                        |                                |                          |
|------------------------|--------------------------------|--------------------------|
| 1 CONCRETE             | 5 FIBER CEMENT - 7" LAP SIDING | 9 CORRUGATED METAL PANEL |
| 2 BRICK                | 6 METAL SHINGLES STAGGERED     | 10 SQUARE CHANNEL SIDING |
| 3 STONE VENEER         | 7 FIBER CEMENT - 5" LAP SIDING | 11 COMPOSITE METAL PANEL |
| 4 CAST STONE HEAD/SILL | 8 FIBER CEMENT - 5" LAP SIDING |                          |

THE RESIDENCES ON THE CHARLES

BUILDING 1: 2 LOS ANGELES ST.  
BUILDING 2: 4 LOS ANGELES ST.

NEWTON MASS 02459  
CREATION ACQUISITION COMPANY, LLC

ARCHITECT

**E-ICON** ARCHITECTURE  
101 SUMMER ST BOSTON MA 02110

CONSULTANT

STAMP

KEY PLAN

6	12/06/2021	BULLETIN #6
3	09/03/2021	BULLETIN #3
NO.	DATE	DESCRIPTION
PROJECT NUMBER: 218007		
DRAWN BY: Author		
CHECKED BY: Checker		

SHEET TITLE

COMPARISON OF OVERALL ELEVATIONS

A-200P

WINDOW & STOREFRONT REVISIONS