



Newton Parks, Recreation + Culture Department

Athletic Fields Improvement Plan

Community Meeting # 1

Bobby Braceland

January 20th, 2021

athleticfields@newtonma.gov

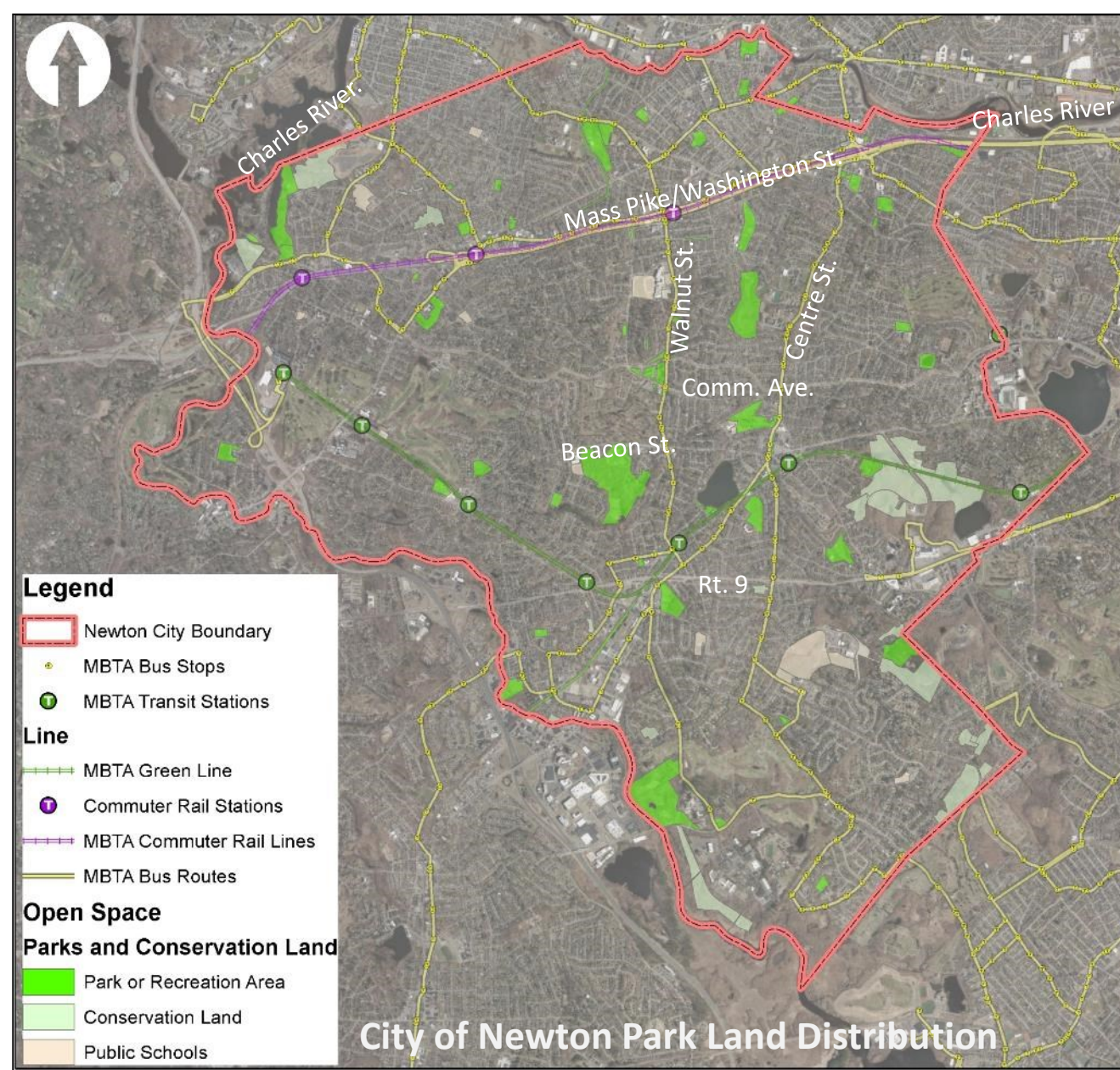
AGENDA

1

SUMMARY OF CITY-WIDE ATHLETIC FIELD MASTER PLAN

2

SUMMARY OF BOBBY BRACELAND PRELIMINARY IMPROVEMENT GOALS



PARKS, RECREATION & CULTURE OVERVIEW:

- Manage and oversee nearly 600 Acres of park land and open space with varying recreational interests including:
 - Aquatic facilities
 - Tracks + fields
 - Trails, pathways + safe routes to schools
 - Playgrounds + tot Lots
 - Field houses + community centers
 - Hard courts
 - Passive areas
 - Outdoor exercise equipment
 - Wooded areas
 - Outdoor challenge courses
 - Dog parks
 - Splash pads
 - Historic significance
 - Wetlands and waterways
- Spread across all Villages, Wards + School zones

Newton Parks, Recreation and Culture Department
Athletic Fields Capital Improvement Plan

A wide-angle photograph of a soccer field. In the foreground on the left, a white soccer goal with a net is visible. The field is green and well-maintained. In the middle ground, several other goals are scattered across the field. A sprinkler system is active in the center, with water spraying in several arcs. Tall stadium light towers are positioned around the field. The background consists of a dense line of green trees, with a white house visible through the foliage on the left. The sky is overcast with grey clouds. The text "HOW WAS PLAN DEVELOPED?" is overlaid in the center of the image.

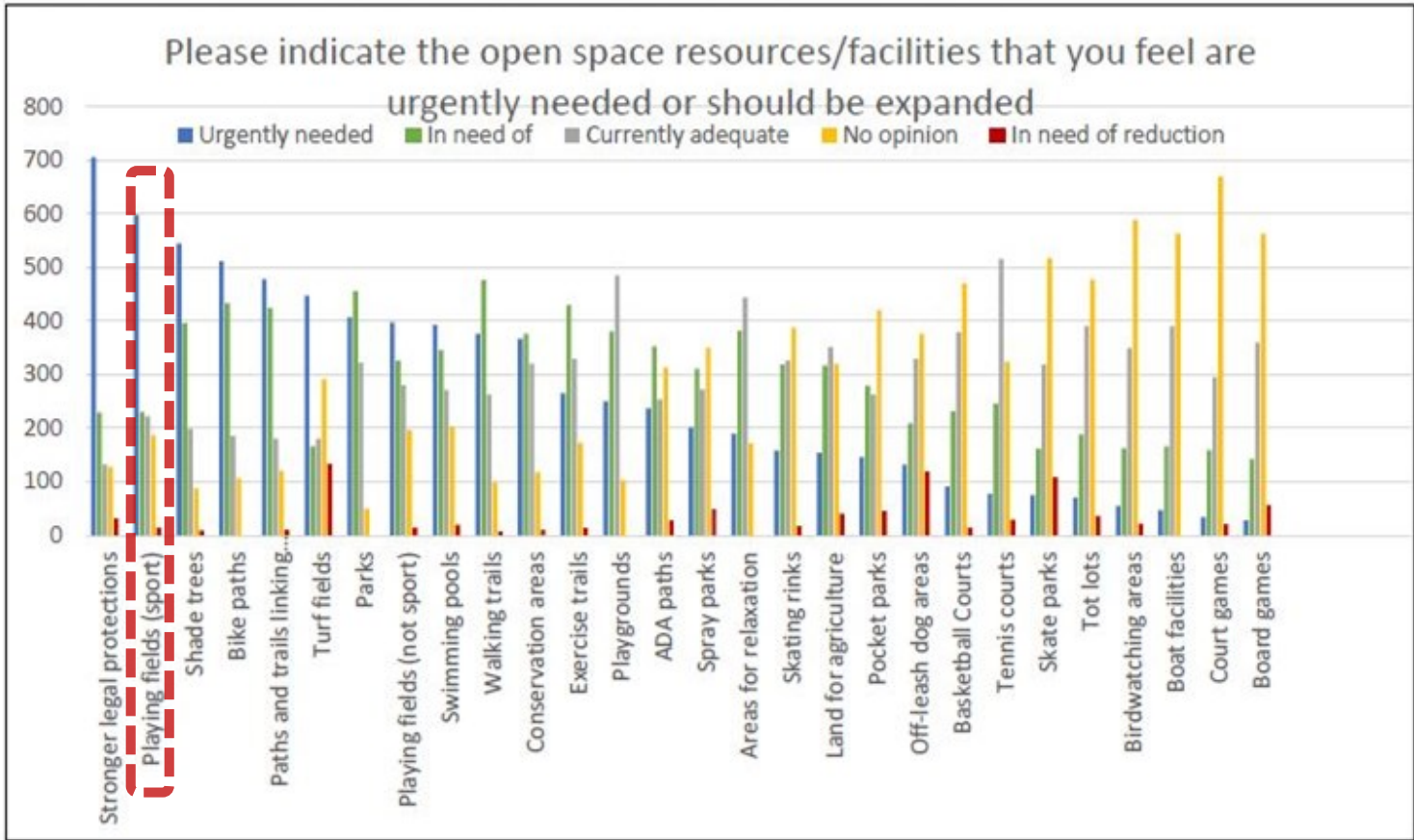
HOW WAS PLAN DEVELOPED?

CITY-WIDE INITIATIVES INFORMING THE ATHLETIC FIELDS MASTER PLAN

- [CITY OF NEWTON OSRP 2020-2027](#)
- 2023-2027 CAPITAL IMPROVEMENTS PLAN LIST -
[HTTPS://WWW.NEWTONMA.GOV/GOVERNMENT/FINANCE/CAPITAL-IMPROVEMENT-PLAN](https://www.newtonma.gov/government/finance/capital-improvement-plan)
- FIELD COMMUNITY MEETINGS
- PARKS + RECREATION COMMISSION FIELD SUB COMMITTEE -
[HTTPS://WWW.NEWTONMA.GOV/GOVERNMENT/PARKS-RECREATION-CULTURE/PARK-RECREATION-COMMISSION/FIELDS-COMMITTEE](https://www.newtonma.gov/government/parks-recreation-culture/park-recreation-commission/fields-committee)
- PRC'S CONTINUED INTERNAL FACILITY USE AND CONDITIONS ASSESSMENT

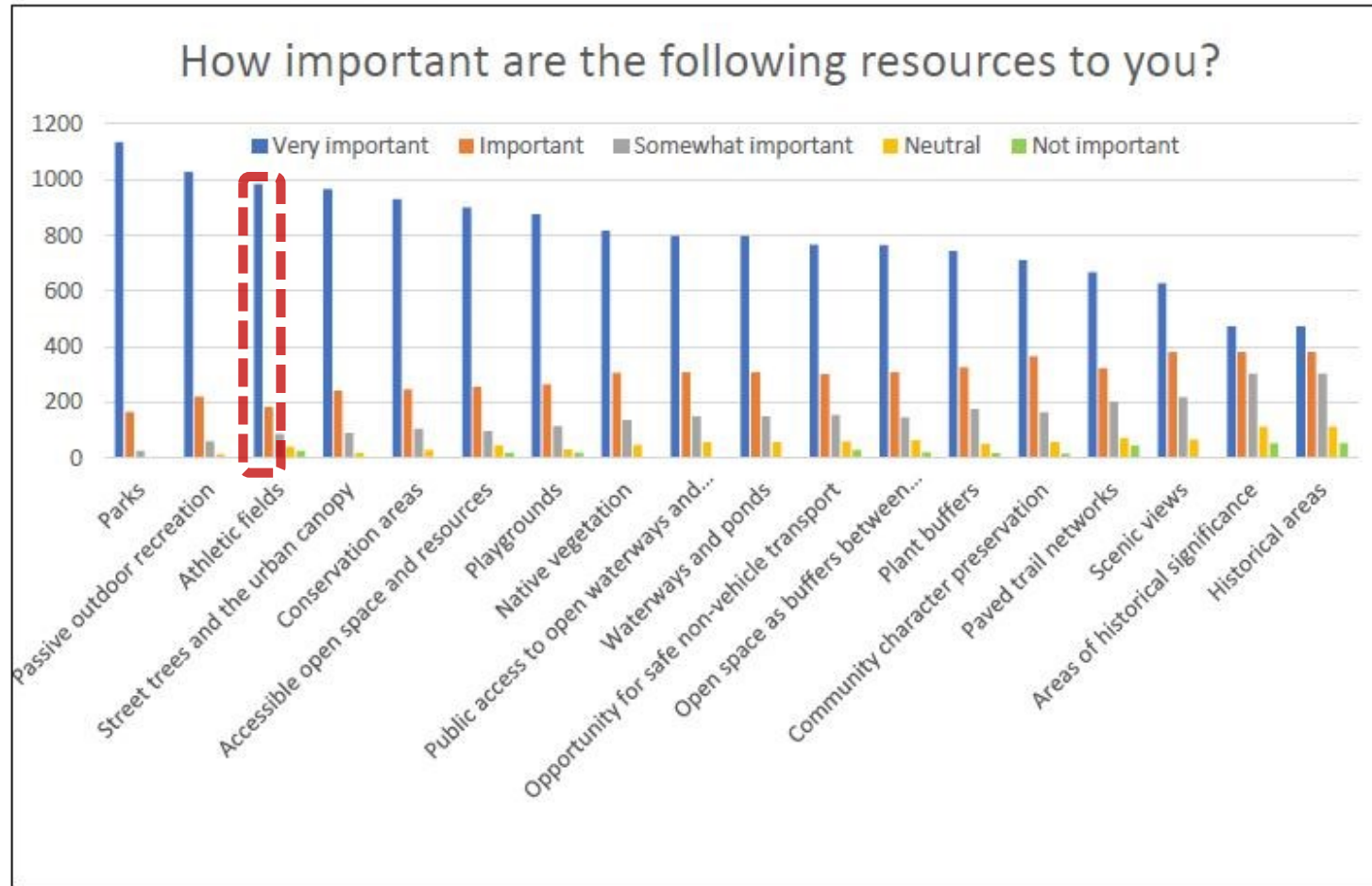
COMMUNITY SURVEY (OPEN SPACE + RECREATION PLAN 2020-2027)

Figure 42. Community Survey: Open Space Resources in Greatest Demand



COMMUNITY SURVEY (OPEN SPACE + RECREATION PLAN 2020-2027)

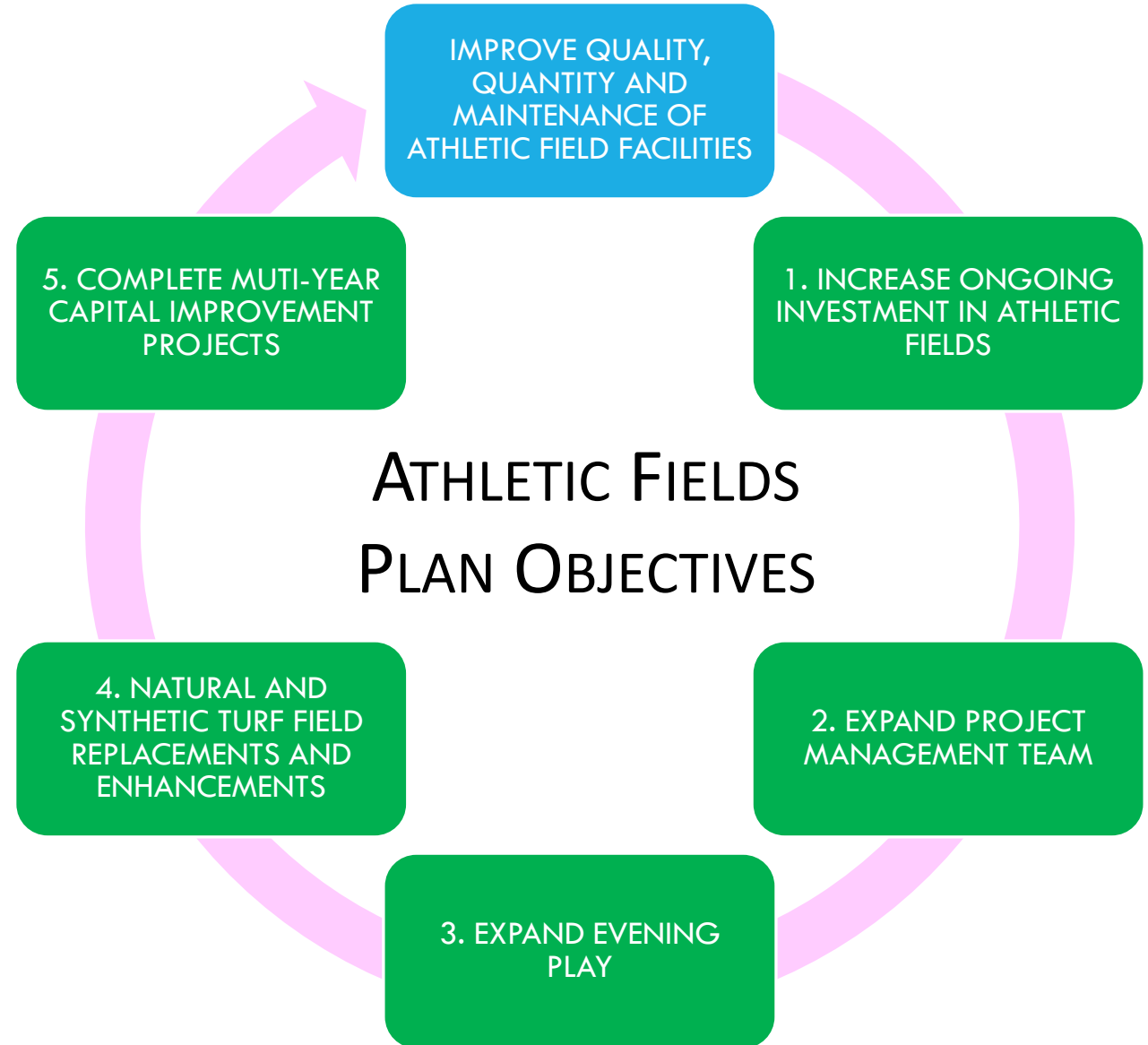
Figure 43. Community Survey: Open Space Resources in Greatest Demand





OVERARCHING APPROACH TO IMPROVE FIELDS

HOW WILL WE ACCOMPLISH OUR PLAN?



FIELD + PARK IMPROVEMENT CAPITAL PROJECT GOALS

- IMPROVE QUALITY AND QUANTITY OF USABLE MULTIUSE/MULTIPURPOSE FIELDS
 - *INCREASE EVENING PLAY OPPORTUNITIES*
 - *REPLACE END-OF-LIFE SPORTS LIGHTING*
 - *IMPROVE QUALITY OF ATHLETIC FIELD SURFACES*
 - *INCREASE AVAILABLE REGULATION-SIZE ATHLETIC FIELDS ON PARK AND SCHOOL LANDS*
- IMPROVE ACCESSIBILITY IN PARK AND FIELD AMENITIES
- ESTABLISH BETTER PARK CONSTRUCTION MANAGEMENT FOR IMPROVED OPERATION & MAINTENANCE POST-CONSTRUCTION
- INVEST EQUITABLY IN NEWTON'S ATHLETIC FIELDS + PARKS ACROSS THE CITY
- SMART AND SUSTAINABLE TECHNOLOGY FOR BETTER RESOURCE MANGEMENT
 - *SMART IRRIGATION*
 - *SMART LIGHTING*
 - *SUSTAINABLE MATERIALS*
 - *CONSISTANT SITE AMENITY SPECS (BACK STOPS, NETTING, INFIELDS, SYNTHETIC TURF, BENCHES ETC.)*



5-YEAR STRATEGIC PLAN

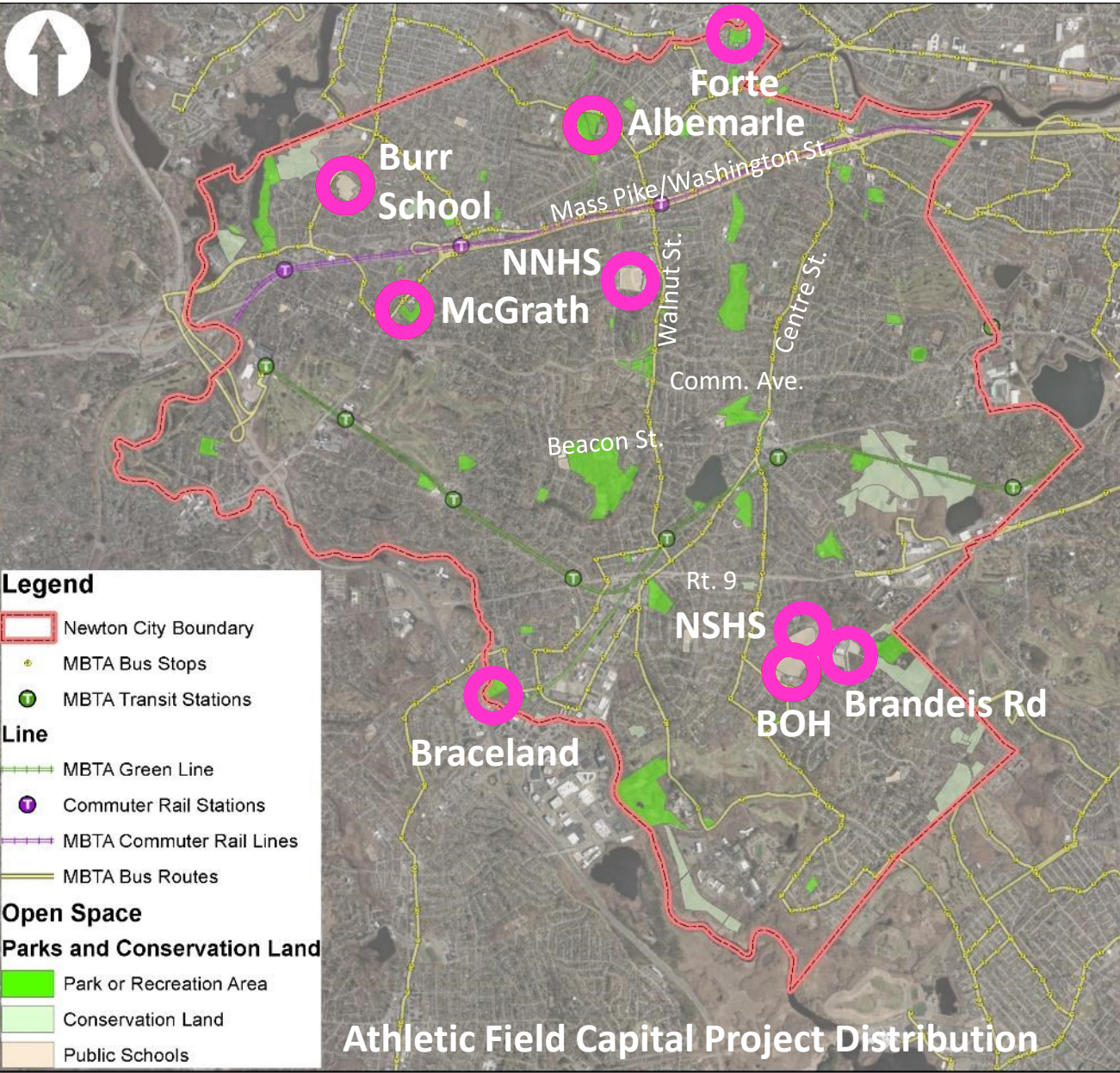
PRIORITIZATION CRITERIA

- **OPEN SPACE & RECREATION PLAN**
- **CITY OF NEWTON CAPITAL IMPROVEMENT PLAN (CIP)**
- **POTENTIAL FOR GREATEST CITY-WIDE BENEFIT**
- **PROJECT SEQUENCING: PRIORITIZE FIELDS WITH PLAY EXPANSION POTENTIAL BEING BROUGHT ONLINE FIRST**
- **POTENTIAL FOR EXPANSION OF MULTIUSE FIELDS**
- **POTENTIAL FOR EXPANDING EVENING PLAY (LIGHT IMPROVEMENTS/ ADDITIONS)**
- **USE AND CONDITIONS ASSESSMENT DATA (IN DEVELOPMENT PHASE)**
- **SPATIAL CRITERIA FOR REGULATION MULTIUSE FIELDS**
- **INPUT FROM ATHLETIC LEAGUE STAKEHOLDERS**
- **INTEGRATED WITH OTHER PROJECTS IN A PARK AREA (E.G., PATH AT McGRATH, GATH POOL PROJECT, FEE ANALYSIS AND INCREASE, STAKEHOLDER FUNDRAISERS ETC.)**

5-YEAR STRATEGIC PLAN

- Albemarle Park
- Forte Park
- Burr School
- Brown/Oak Hill Fields
- McGrath Park
- Bobby Braceland
- Newton South Brandeis Rd. Field Lighting
- Newton North Tiger Stadium Lighting
- NSHS Synthetic Turf Replacement
- NNHS Synthetic Turf Replacement

TOTAL: 10 Locations



Newton Parks, Recreation and Culture Department
Athletic Fields Capital Improvement Plan

CONSIDERATIONS FOR THE NEXT 5 YEARS OF CAPITAL IMPROVEMENTS

- **CAPITAL IMPROVEMENTS PLAN LIST**
- **DEVELOPER MITIGATION AND IMPACT FEES CONTRIBUTING TO IMPROVEMENTS:**
 - *FORTE PARK*
 - *WELLINGTON PARK*
 - *WEST NEWTON COMMON*
- **OTHER CITY CONSTRUCTION PROJECTS:**
 - *SCHOOL PROJECTS THAT MAY RESULT IN NEW OR ENHANCED PARK LAND*
- **PROJECT PRIORITY VARIABLE:**
 - *SCHOOL TIME CHANGE*
 - *PRIVATE OPEN SPACE BECOMES AVAILABLE (GOLF COURSES ETC.)*

ADDITIONAL NON-ATHLETIC FIELD PROJECTS IN THE WORKS:

- **LOUISE LEVINGSTON COVE IMPROVEMENTS AT CRYSTAL LAKE**
- **MARTY SENDER GREENWAY PHASE 2 IMPROVEMENTS**
- **GATH POOL RECONSTRUCTION**
- **ACCESSIBILITY IMPROVEMENTS AND OVERALL MASTER PLAN FOR CRYSTAL LAKE**
- **SPEARS PARK COMMUNITY GARDENS**
- **NEWTON CENTER PLAYGROUND PAVILION**
- **CABOT PARK PAVILION**



Bobby Braceland

Upper Falls
Playground

Charles River

Charles River

Bobby Braceland

8.8 ACRES

Ward: 5

Village: Upper Falls

Existing Amenities

- 1 baseball diamond
- 32 parking spaces (2 ADA)
- 2 tennis courts
- 1 basketball Court
- off leash dog area
- 1 – 2 Intermediate rectangular fields per site allows



Bobby Braceland Fields Key Athletic and Facility Stake Holder Data

Location	ATHLETIC FIELD TYPE	Total Hours (Apr 1 thru Nov 30)
Braceland Playground	Baseball Field	129
	Soccer Field A (7v7)	254
	Soccer Field B (7v7)	254

BOBBY BRACELAND PLAYGROUND PHASE 2

IMPROVEMENT IDEAS/GOALS

- NEW ACCESSIBLE PERIMETER PATH AND SEATING
- INSTALL HIGH EFFICIENCY IRRIGATION WITH REMOTE ACCESS AND WEATHER CLOCK
- IMPROVE FIELD PERIMETER FENCE (AND NETTING)
- IMPROVE BASKETBALL COURT
- SCOREBOARDS
- CALIPER INCH REPLACEMENT FOR ANY TREES REMOVED
- INCREASE TREE CANOPY WHERE POSSIBLE
- REVISIT AND UPDATE 2008 PLAN TO ACCOUNT FOR CURRENT AND NEWLY IDENTIFIED COMMUNITY NEEDS



Completed Steps

- Attained Community Preservation Act funding for design/engineering work
- Prepared Request for Qualifications and advertised bid for designer
- Designer Selection Committee chose design firms

Next Steps

- Develop athletic field design/ layout based on community input, stakeholder and departmental needs
- Develop project construction priority and timeline
- Secure construction funding

Questions and Discussion

For additional questions and input please contact: athleticfields@newtonma.gov

For Presentation, Chat, recordings and meeting recordings, please go to
www.newtonma.gov/fieldprojects