

MEMORANDUM

To: Bowl Pavilion Planners**Date:** February 17, 2022**From:** Bill Hammer
DJ Chagnon**Project:** Newton Performance
Bowl Pavilion**Job No:** 22123**Subject:** Programming Notes

Attendees: Paula Gannon (BPP), Danielle Moriarty (BPP), Rafik Ayoub (BPP), Luis Perez Demorizi (BPP), Bill Hammer (HKT), D.J. Chagnon (CBA), Amy Foster (CBA)

The meeting was via zoom with the BPP and the Design Team to start a discussion centered on what kinds of events should be accommodated at the Bowl Pavilion. We decided to review as many ideas as possible, while knowing that the final design cannot be all things to everyone. Nevertheless, the goal was to try to identify as many types of programs as possible and to discuss how the design might adapt to the events as well as how the events might adapt to the design.

The discussion started with D. J. and Amy presenting some of their initial thoughts about the site and the site analysis diagrams in progress (see attached). The following is a summary of the issues that were discussed:

1. There are three potential locations for the pavilion along the northern periphery of the area under consideration. In general, they back up towards Hammond Brook. One location is towards the Mason-Rice Elementary School, the other is centered on the Hut and the other is to right side of the hut.
2. It is assumed that parking would be accommodated at the school lot which is directly connected to the west side of the site, with additional on-street parking along Tyler Terrace and in Newton Centre.
3. Accessibility from the school parking lot will be a major factor in finalizing the preferred design. The site drops between 21 and 24 feet vertically depending on where the Bowl is located. It will be a challenge to make an accessible path from the parking lot to the top of the slope at Tyler Terrace. Locating accessible spots for audience members needs to be carefully considered. We do have the potential however, to mold the landscape in discrete locations so as to accommodate members of the audience with mobility limitations. Since there are no fixed seats planned and seating will be a combination of folding chairs, blankets, etc. owned by the audience members along with the potential to accommodate informal seating on low site walls, it seems as though we have an opportunity find some unique solutions that blend into the overall landscape.
4. The Mason-Rice school uses the park for many scheduled outdoor activities and the community uses the steepest slope between the parking and the Hut for sledding. It was agreed by everyone that we need to talk to the school about how we can accommodate and support their current uses in the park. The Bowl Pavilion may also be available for school programs and summer camp.
5. Another important site circulation factor is vehicular access to the new pavilion for loading and unloading equipment needed for various events, such as a music concert, theatrical production and so forth.

6. Site drainage is another site issue that must be addressed. CBA will look at site drainage options and we will consult with the Conservation Commission as we develop our plans. We do not have a civil engineer on the team at this phase, but we can generate one or more concepts to be explored in the next phase of the project.
7. The kinds of performances that could take place are:
 - Music from small groups (e.g. jazz, chamber music)
 - Larger Music ensembles
 - Theater Productions
 - Dance Recitals
 - Spoken Word
8. It is assumed that these productions will adapt to the physical limits of the stage. We also considered having some sort of extensions to the stage for larger productions.
9. Another possible activity to consider would be outdoor movies. If so, we would most likely need to provide a rear-projection screen unless it is feasible to have a large digital screen that perhaps could be used for cultural events in other venues within the city.
10. The actual pavilion structure itself might also include:
 - A green room
 - Dressing rooms
 - Audio equipment storage
 - A unisex toilet
11. A strategically located structure to house portable toilets (separate from the pavilion) could provide a feasible public-access restroom alternative.
12. Utilities to service the site were discussed. Ideally, it would be an ideal location to utilize renewable energy such as solar power for the electricity. Bill Hammer has talked to a solar design consultant that HKT works with. At some point, we will get some additional input as to the feasibility. Right now we look at locations for a solar array, but we will have some restrictions with regard to how much we can generate and potential shade from the surrounding tree canopy(s).
13. Site lighting and acoustics are other important elements to the success of this project. We need to be mindful of the immediate residential abutters. While there have not been any complaints over the past years' performances, most of them have occurred during the day and early evenings. While these issues are critical in the early conceptual design phase we know that we will need to work with lighting and acoustic consultants. The acoustics will also depend on what kind of performances are allowed and at what time of day.
14. CBA has started to graphically analyze the site so that we can visualize the connections between the topography and the surrounding residential area and other activities in the park as well. Attached are some early sketches to supplement the above narrative. We hope that it will also provoke more thoughtful discussion.

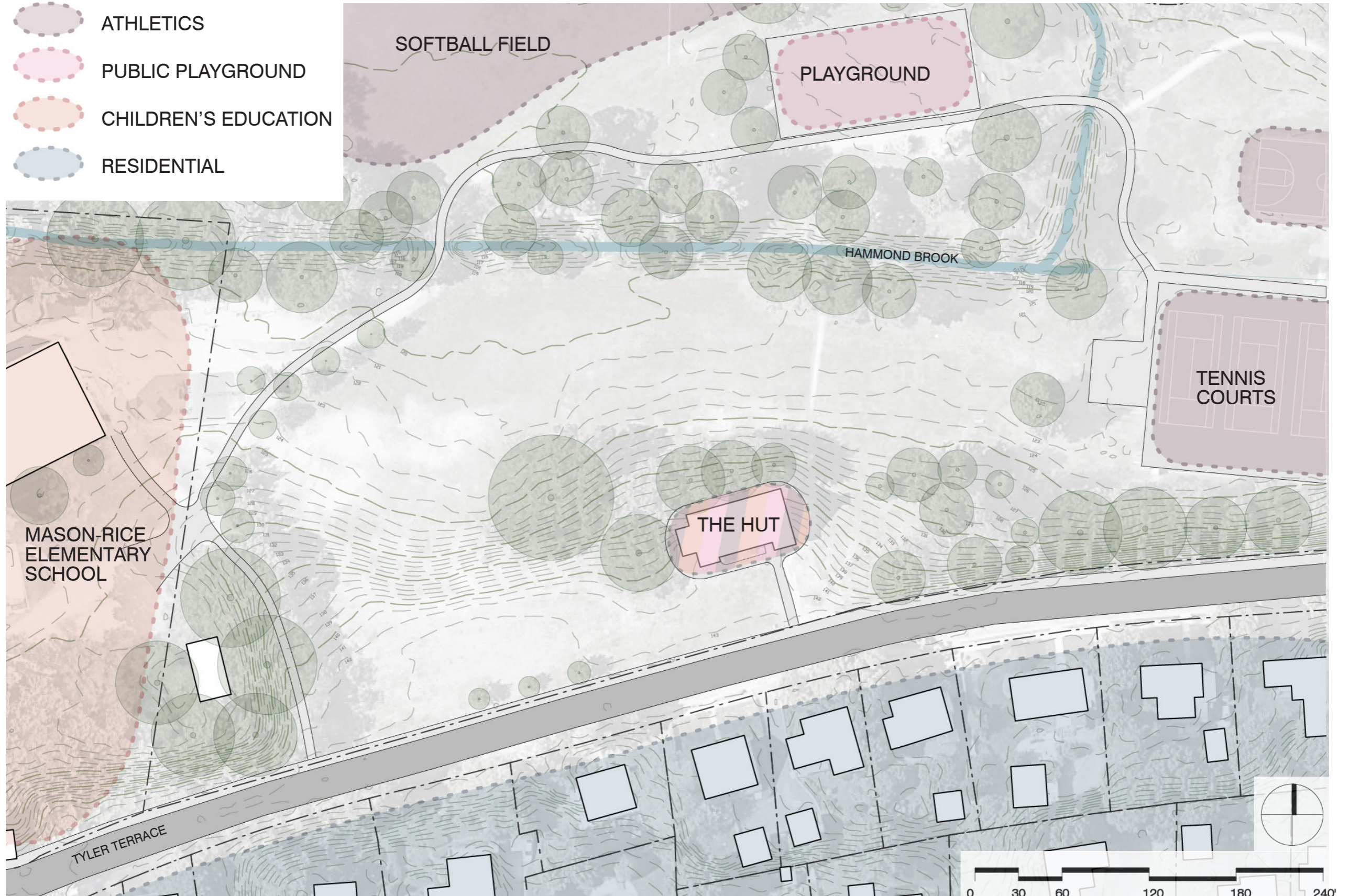
EXISTING CONDITIONS Site Circulation

- PAVED PATH (Presumed ADA Accessible)
- PAVED PATH (Non ADA Accessible)
- UNPAVED FOOTPATH (Non ADA Accessible)
- VEHICULAR CIRCULATION



EXISTING CONDITIONS Site Program

- ATHLETICS
- PUBLIC PLAYGROUND
- CHILDREN'S EDUCATION
- RESIDENTIAL



EXISTING CONDITIONS Solar Path Study

