

CITY OF NEWTON, MASSACHUSETTS
PURCHASING DEPARTMENT
purchasing@newtonma.gov
Fax (617) 796-1227

February 28, 2022

ADDENDUM #3
INVITATION FOR BID #22-46

NEWTON FREE LIBRARY PARKING LOT IMPROVEMENTS

THIS ADDENDUM IS TO ANSWER THE FOLLOWING QUESTIONS AND PROVIDE UPDATED PLAN SHEETS, PROJECT MANUAL PAGES AND CLARIFICATION OF PROJECT MANUAL:

A. QUESTIONS:

Q1. Is item 0.303DLA-A to waive the differential cost of fuel or differential cost of liquid asphalt? The way it is worded in the bid form and specs seems to conflict.

A1. Yes, Item 0.303DLA-A is an option for bidders to waive the price adjustment for fuel or liquid asphalt. The contractor can include fuel expenses in his/her material and labor pricing or have fuel charges calculated separately. If a bidder chooses to bid this item, then he/she must not include the cost of fuel in the respective line items.

Q2. The specs for the drainage pipe and conduit say the temporary asphalt patch is incidental to those items but item 472 "temporary asphalt patching" seems to include the tonnage for this work. Is the patching incidental to the pipe items or will it be paid under item 472? If it is incidental then what is item 472 being used for?

A2. Temporary asphalt patching for drainage pipe and conduit installation is incidental to those respective items. The tonnage under item 472 does not include quantities for this work.

Within the Project Manual's on page 161, under the GENERAL section, delete the first paragraph and replace with the following:

Work under this Item shall include temporary asphalt patching to provide temporary access and egress to the properties abutting the work area and temporary curb ramps as determined by the Engineer. It shall also be used for temporary restoration of the pavement surface where not included in the payment of other items in this contract and where such areas are specified by the City. It shall also be used to safeguard raised utility structures as approved or directed by the Engineer and for permanent areas where handwork is required. The Contractor is advised that this material will be spread primarily by hand. Temporary asphalt patching for drainage pipe and conduit installation shall be considered incidental to the respective items.

Q3. The detail for the concrete sidewalks and ramps calls for lampblack at 2 LB/CF. Is this correct or should it be 2 LB/CY?

A3. Lampblack for concrete sidewalks and ramps is not required.

Replace plan set Sheet C-09, Construction Details II, with the attached updated plan sheet. Changes to the "On-site and off-site concrete sidewalk, pedestrian walkway, pedestrian curb ramp, and raised island" detail that have been incorporated as part of Revision No. 1 are clouded.

Q4. The erosion control detail is showing a filter sock with an orange construction fence. Is this correct or should the construction fence be a silt fence? If it is correct will the orange construction fence get paid under item 697 "sedimentation fence"?

A4. The "12" Diameter filter sock with orange construction fence" detail shown on Sheet C-12 is correct; a filter sock with an orange construction fence will be used. The orange construction fence will be paid for under Item 697. Sedimentation Fence.

Q5. Item 799 "landscaping" includes two crushed stone surface islands. What size stone is this and how thick is it getting installed?

A5. The two proposed crushed stone surface islands shown on Sheet L1 shall be constructed with 6-inch-deep, ¾"-diameter washed crushed stone. Crushed stone will be paid for under Item 799. Landscaping.

Q6. The planting schedule on drawing L1 has some different quantities than what is called out on all the landscape drawings. Some quantities are higher and some are lower. Since this is a lump sum item are we supposed to base it off the quantities in the planting schedule or the quantities called out on the drawings?

A6. The quantities for the planting should be based on the landscape drawings instead of the planting schedule.

Replace plan set Sheet L1, Enlargement Plan 1, with the attached updated plan sheet; changes made to the Planting Schedule table as part of Revision No. 1 are clouded.

Q7. Item 450.31 is for a superpave intermediate course 12.5 but the detail is showing a superpave intermediate course 19.0. Which one is correct?

A7. The Superpave intermediate course shall be 12.5 (SIC-12.5).

Replace plan set Sheet C-09, Construction Details II, with the attached updated plan sheet. Changes to the "Full depth pavement reclamation parking lot pavement" detail that have been incorporated as part of Revision No. 1 are clouded.

Q8. The porous pavement detail is calling for one 6" lift of porous pavement. Is this correct?

A8. The porous pavement shall be placed on two equal lifts. As specified on page 156 of the Project Manual, Section B – Porous Asphalt Pavement Installation, Subsection 7 – Spreading and Finishing, "The Porous Asphalt shall be placed either in a single application at 4 inches thick or in two lifts."

Q9. The specs talk about phasing this project to allow parking. Please clarify how much space is to be left open and how we are to phase the work to be done. I drawing depicting the phase sequencing would be helpful so that we are all bidding the same scope.

A9. On page 161 of the Project Manual, under the GENERAL section, delete the first paragraph and replace with the following:

The Library shall remain open during construction. The construction shall be performed in phases and shall not require the library parking lot to be closed unless coordinated and approved by the City and the Library's representatives. The Contractor shall maintain a minimum of 70 parking spaces available at all times. However, certain construction operations may require fewer than 70 parking spaces being maintained, and the city will consider such requests. The Contractor must request approval from the City and the Library's representative at least one (1) week beforehand. The Contractor shall submit traffic control plans to the City and Library's representatives for approval at least one (1) week prior to starting each stage of construction. The traffic control plan shall detail all typical and specific work zones and the locations of available parking spaces within the library parking lot, the duration of each phase of construction, as well as the planned accessible pedestrian route through, or adjacent to, the work zone.

Q10. On detail sheet c-09 vertical curb it states loam by others. Please clarify who is loam and seeding.

A10. Loam and seed shall be installed by the Contractor as part of this contract.

Replace plan set Sheet C-09, Construction Details II, with the attached updated plan sheet. Changes to the "Vertical granite curb setting adjacent to grass" detail incorporated as part of Revision No. 1 are clouded.

Q11. Existing conditions sheet does not show the solar canopies. Please provide a drawing that shows the location and height of the canopies and the electrical lines underground for these canopies.

A11. The existing solar canopies and their columns are shown on Sheet C-02 to C-07 as retain. The existing underground electric conduit for these canopies are shown on Sheet C-02, C-03, C-05, C-06, and C-07 with labeled retain. The Contractor shall field verify the actual locations of the solar canopy columns and underground electric conduit prior any construction begins.

Q12. Type A3 lighting is described as a single in the LIGHT FIXTURE SCHEDULE shown on drawing E-02. On lighting plan E-01, A3 is shown as a double. Which is correct?

A12. The correct label for the double luminaire should be A2.

Replace plan set Sheet E-01, Lighting Plan, with the attached updated plan sheet, with changes incorporated as part of Revision No. 1 clouded.

Q13. Item 811.27 ELECTRIC HANDHOLE (MUNICIPAL STANDARD) has a bid quantity of 18. Drawing E-01 shows a quantity of 8. Which is correct?

A13. The correct quantity for Item 811.27 Electric Handhole (Municipal Standard) is 8.

Replace bid form page 80 with the attached updated bid form, with changes incorporated as part of Revision No. 1 clouded.

Q14. Under what bid item will there be payment for the 1 1/2" EMT conduit and fittings to the electric room?

A14. The work for the 1 1/2" EMT conduit and fittings will be paid under Item 823.172 Electrical Room Conduit and Fittings.

Within the Construction Specification section of the Project Manual, add the attached construction specification for Item 823.172 after page 200, with changes incorporated as part of Revision No. 1 clouded.

B. CLARIFICATION OF PROJECT MANUAL

On page 104 of the Project Manual, within the Construction Specifications section, add the following at the end of the sixth paragraph:

Upon completion of the project, the Contractor shall provide an as-built plan that is signed and stamped by a registered Professional Engineer to the City for review and approval. The cost of this task shall be considered incidental to this project. No additional compensation shall be requested from the City.

- C. Attachment 1 - UPDATED PLAN SHEETS (C-09_C-12_L1_E-01)
Attachment 2 - UPDATED PROJECT MANUAL PAGES (80_84_200)**

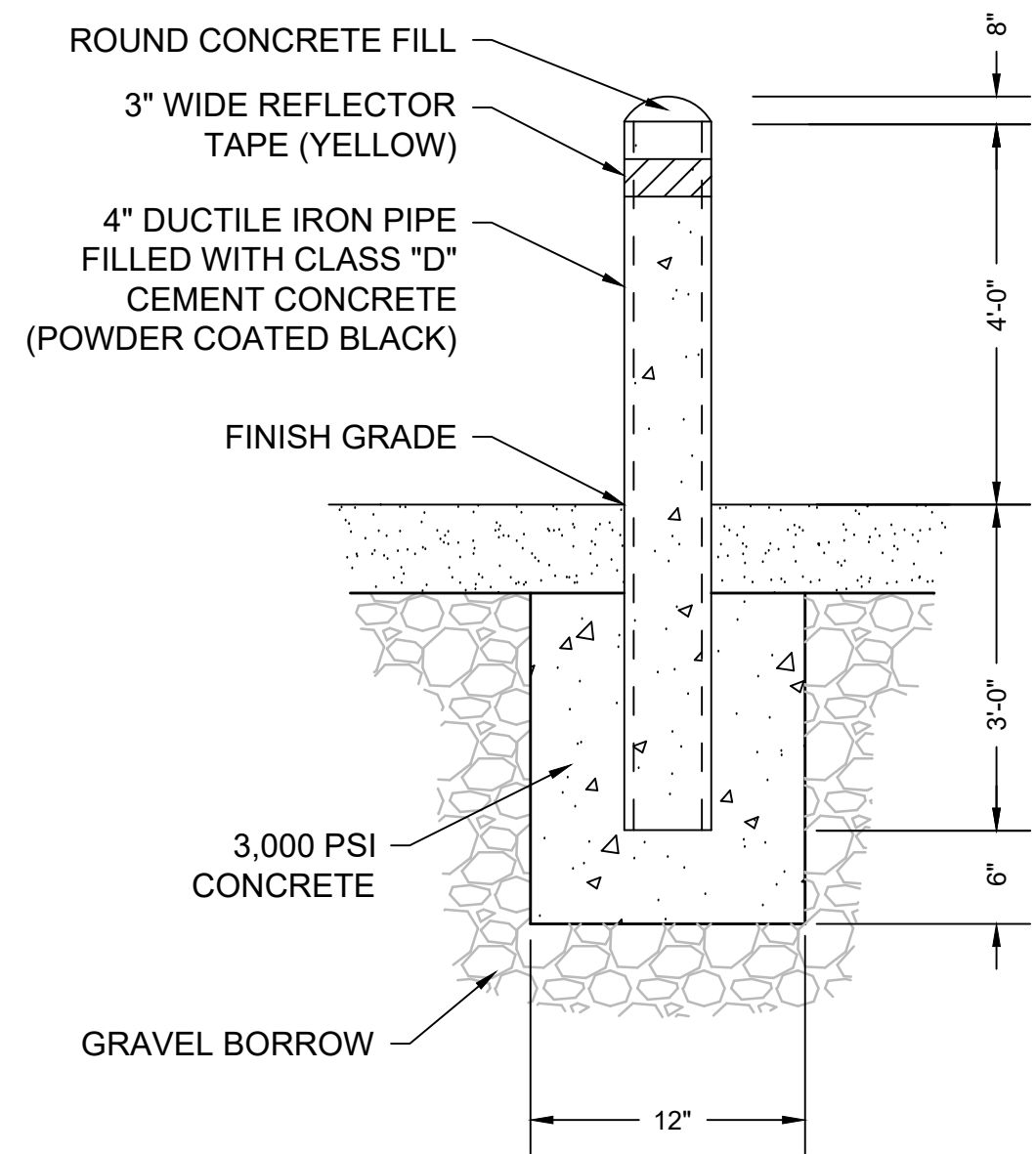
All other terms and conditions of this bid remain unchanged.

**PLEASE ENSURE THAT YOU ACKNOWLEDGE ALL ADDENDA ON YOUR
BID FORM. FAILURE TO ACKNOWLEDGE ALL ADDENDA COULD
RESULT IN REJECTION OF YOUR BID AS NONRESPONSIVE.**

Thank you.

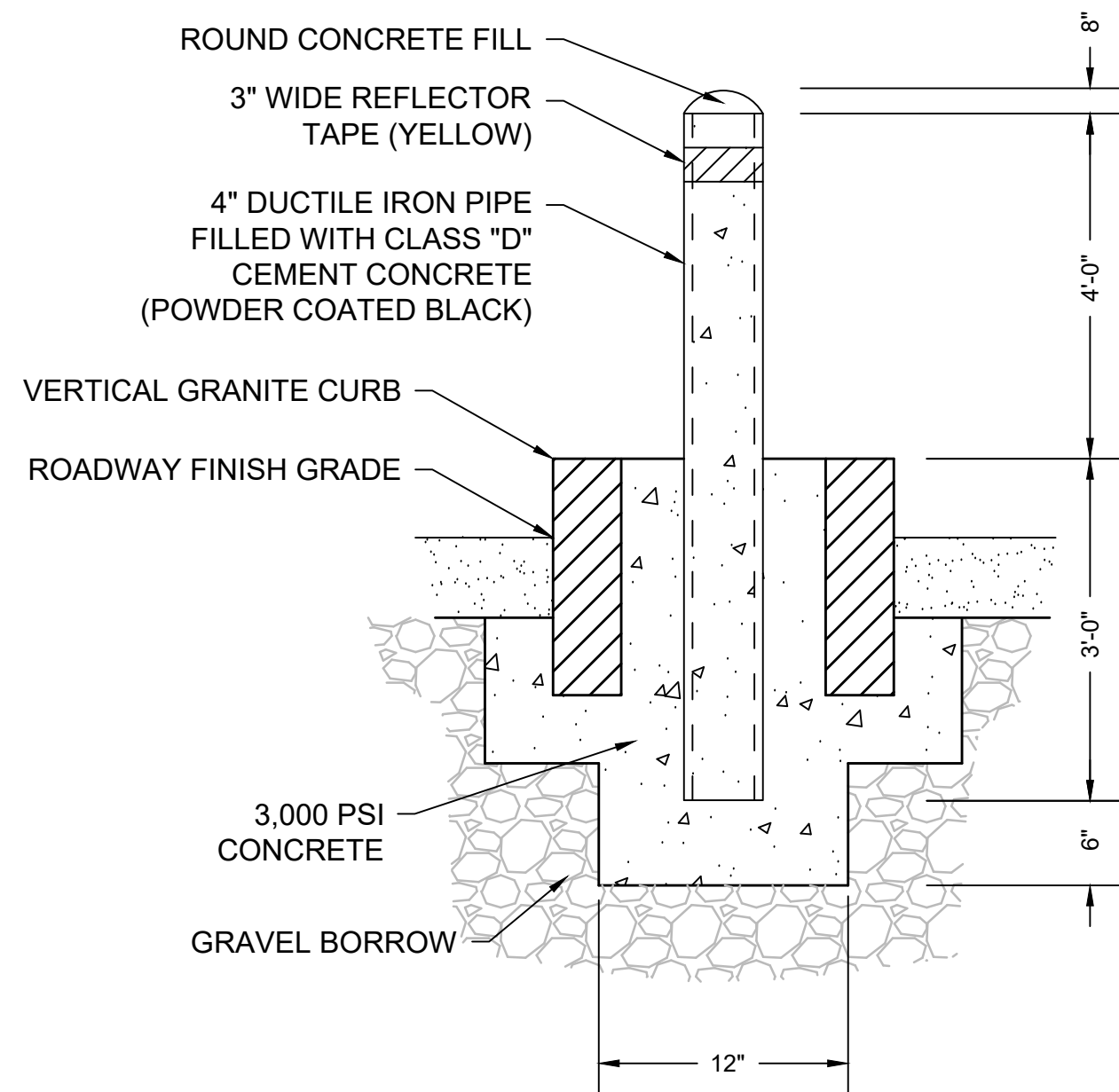
A handwritten signature in black ink that reads "Nicholas Read". The signature is written in a cursive, slightly slanted style.

Nicholas Read
Chief Procurement Officer

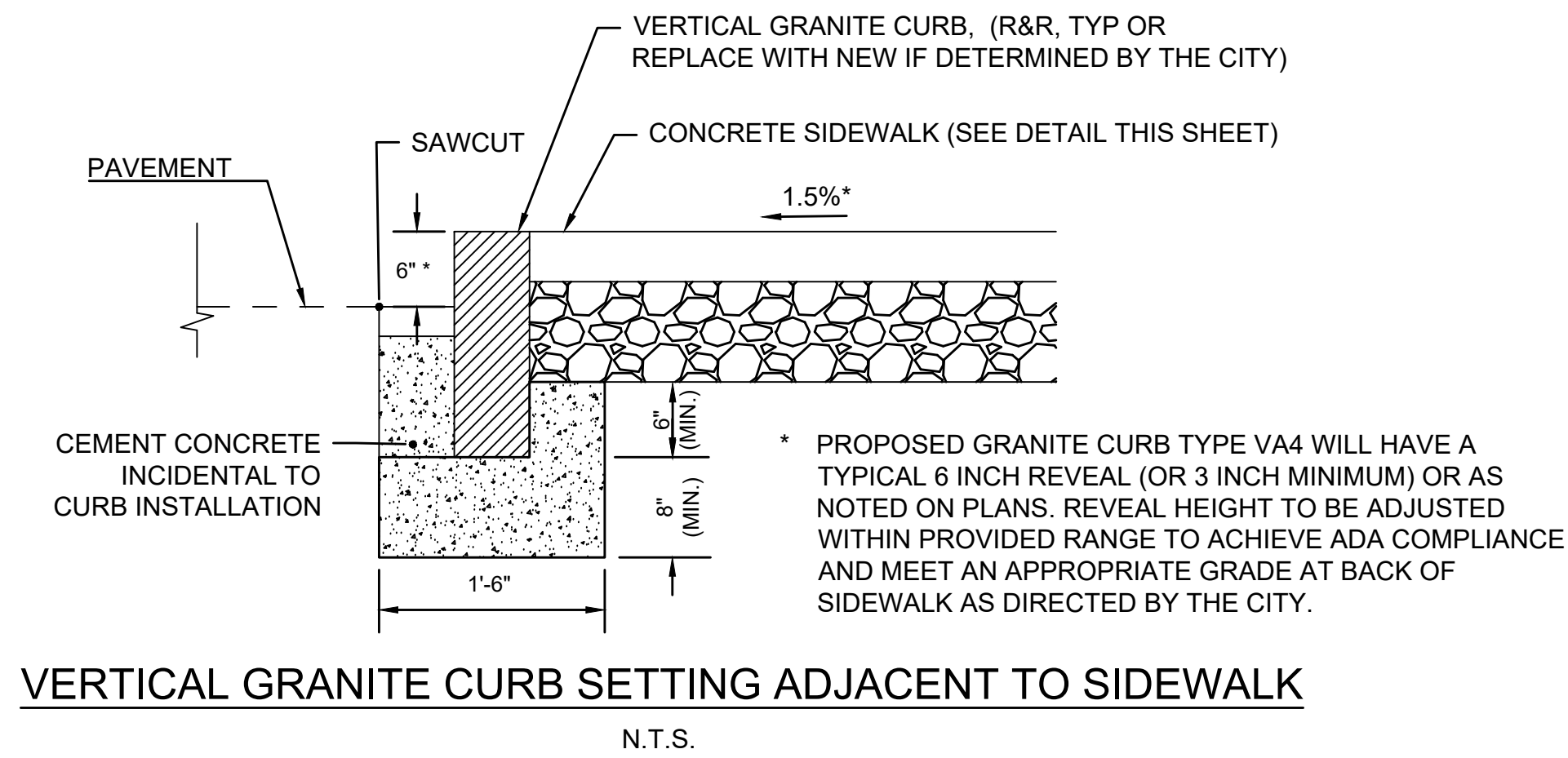


CONCRETE FILLED DUCTILE IRON FIELD FABRICATED BOLLARD (SET IN PAVEMENT)
N.T.S.

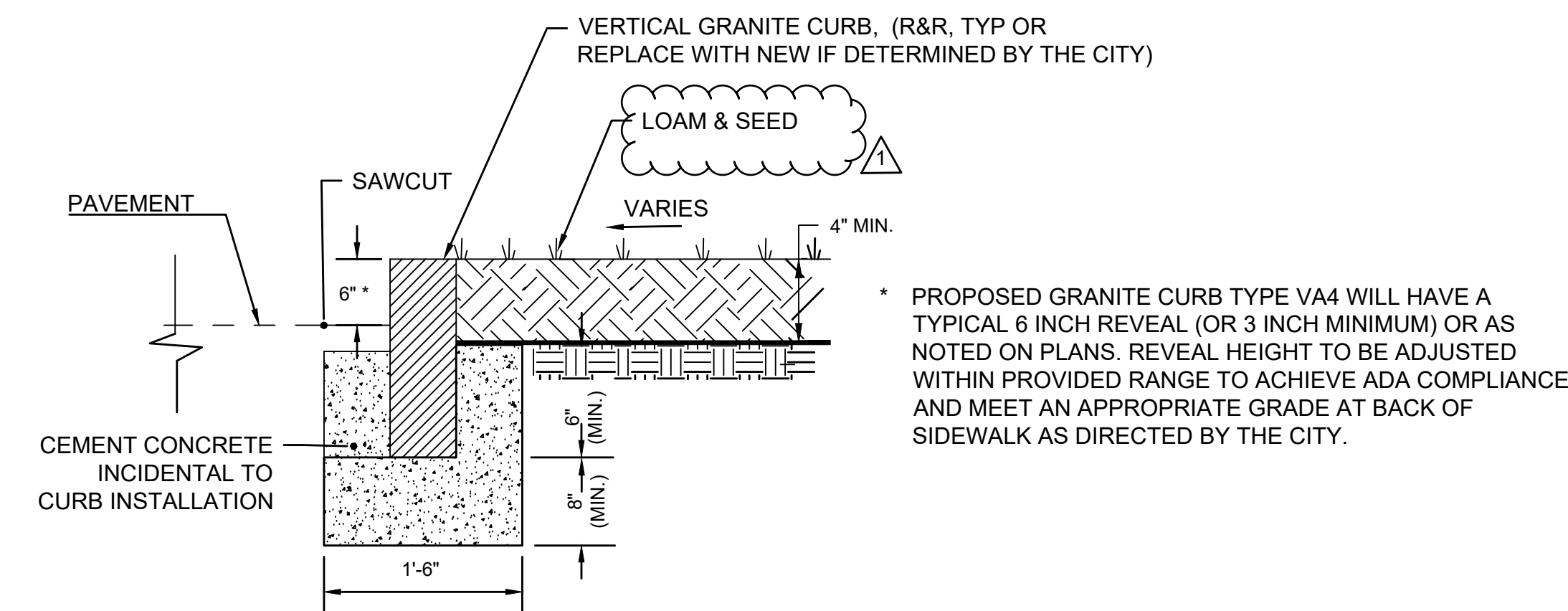
NOTE: THE (CUT) EDGES ARE TO BE BEVELED & RENDERED SAFE PRIOR TO PLACEMENT OF THE DOME-TOPPED CONCRETE FILLER MATERIAL.



CONCRETE FILLED DUCTILE IRON FIELD FABRICATED BOLLARD (SET IN ISLAND)
N.T.S.

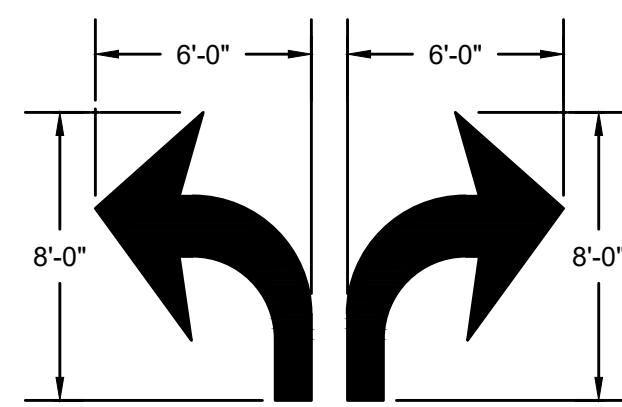


VERTICAL GRANITE CURB SETTING ADJACENT TO SIDEWALK
N.T.S.

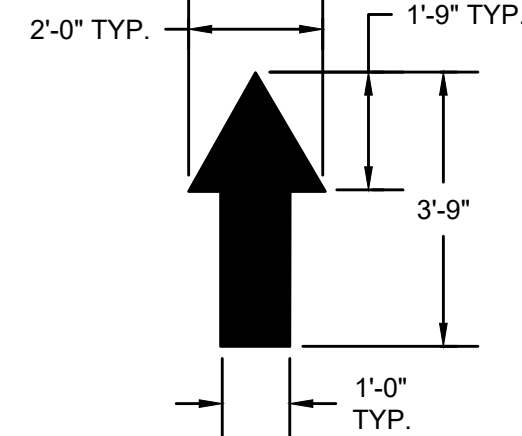


VERTICAL GRANITE CURB SETTING ADJACENT TO GRASS
N.T.S.

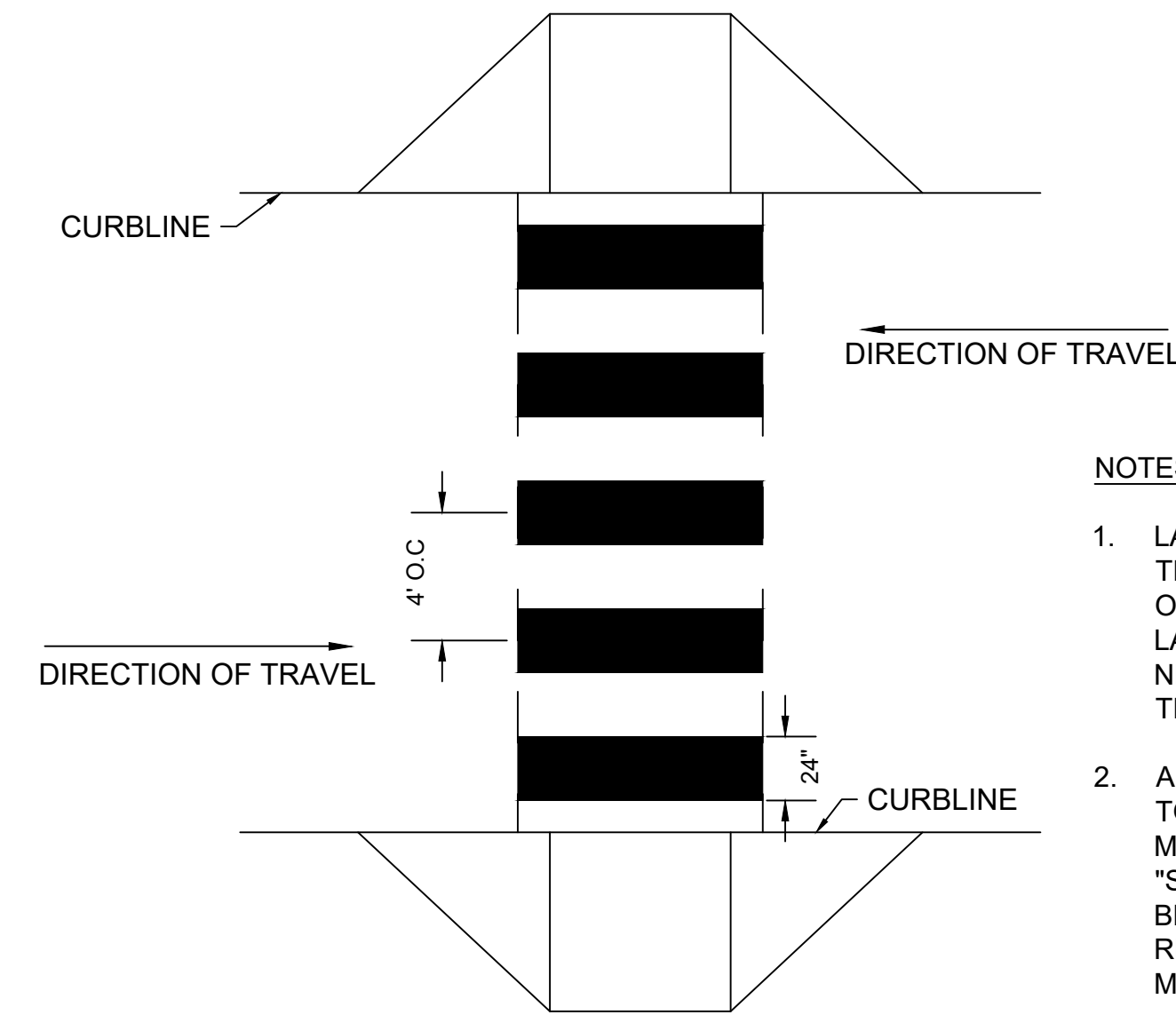
- NOTES:
- ARROWS SHALL BE APPLIED IN ACCORDANCE WITH THE LATEST EDITION OF MANUAL ON UNIFORM TRAFFIC CONTROL DEVICES FOR STREETS AND HIGHWAYS.
 - THESE ARROWS ARE TO BE PAINTED RETROREFLECTIVE WHITE.



TURN LANE ARROW
N.T.S.

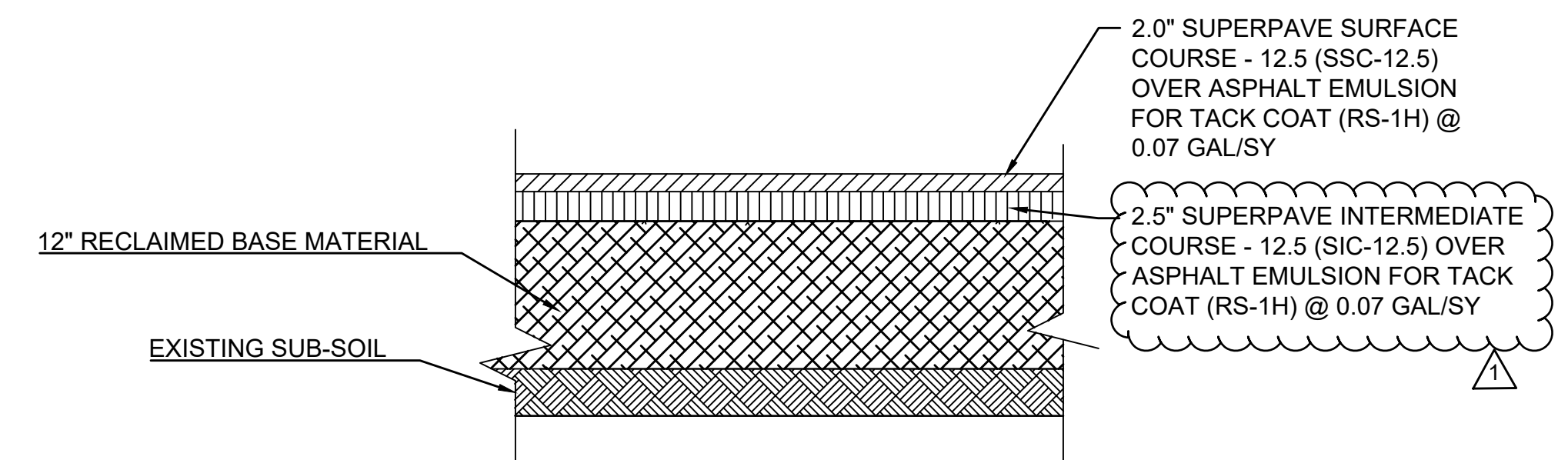


TRAFFIC FLOW ARROW
N.T.S.

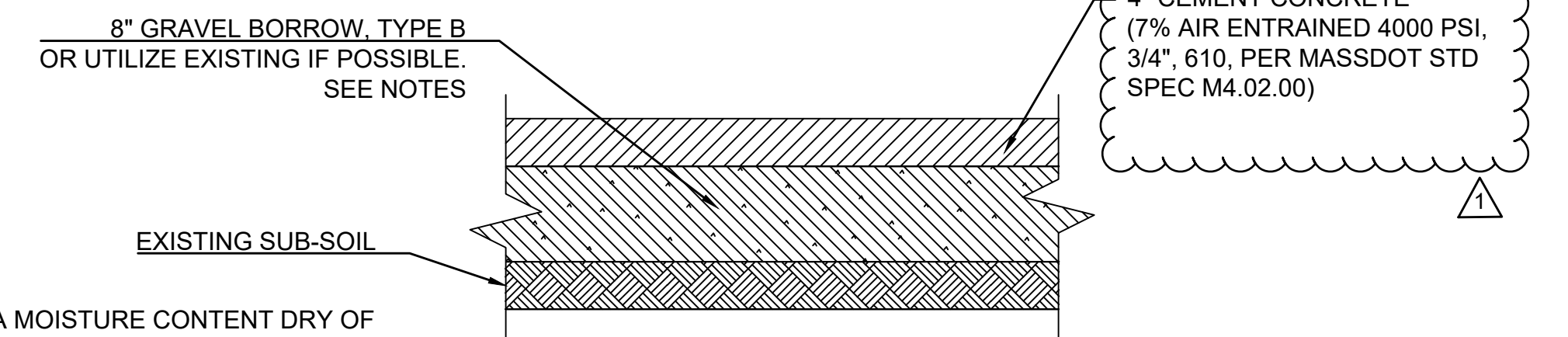


CONTINENTAL-STYLE CROSSWALK (2' WIDE LINES)
N.T.S.

- NOTES:
- LAYOUT OF CROSSWALKS SHALL BE ORIENTED IN THE DIRECTION OF TRAVEL AND LOCATED OUTSIDE OF THE WHEEL PATH OF VEHICLES. LAYOUT SHALL BE APPROVED BY THE CITY OF NEWTON DPW PRIOR TO APPLICATION OF THERMOPLASTIC.
 - ALL CROSSWALKS INSTALLED SHALL CONFORM TO THE RELEVANT PROVISIONS OF THE MASSACHUSETTS HIGHWAY DEPARTMENT "STANDARD SPECIFICATION FOR HIGHWAY AND BRIDGES" DATED 2021, SECTION 860 FOR REFLECTORIZED LINE (THERMO-PLASTIC) & MATERIAL M7.01.03, LATEST REVISIONS.



FULL DEPTH PAVEMENT RECLAMATION PARKING LOT PAVEMENT
N.T.S.



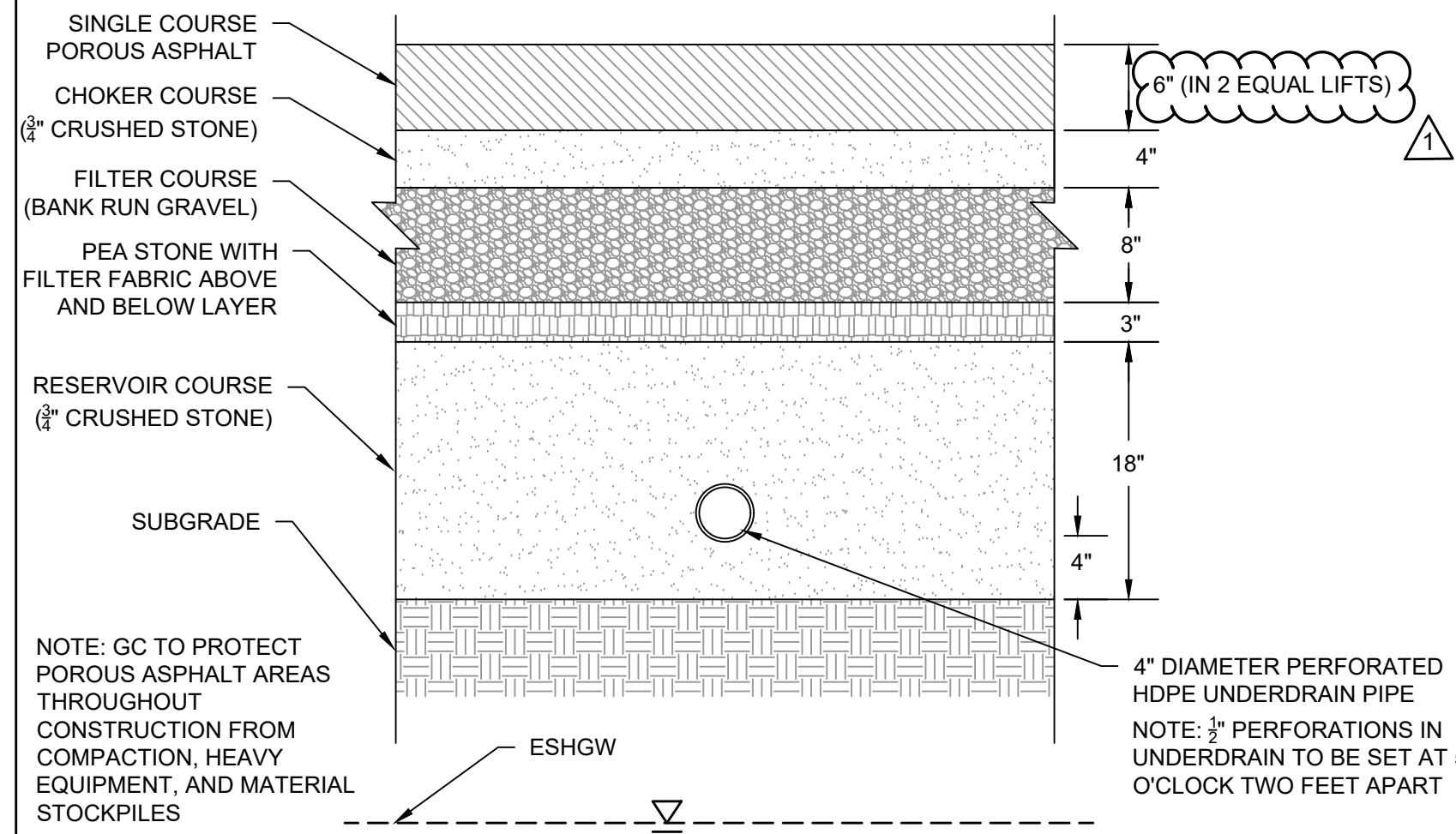
ON-SITE AND OFF-SITE CONCRETE SIDEWALK, PEDESTRIAN WALKWAY, PEDESTRIAN CURB RAMP, AND RAISED ISLAND
N.T.S.

- NOTES:
- THE SOIL MUST HAVE A MOISTURE CONTENT DRY OF OPTIMUM AS DETERMINED BY THE MOISTURE-DENSITY RELATIONSHIP TEST METHOD ASTM D1557.
 - THE SOIL CAN BE COMPACTED TO 98% OF THE MAXIMUM STANDARD PROCTOR DENSITY AS DETERMINED BY THE MOISTURE-DENSITY RELATIONSHIP TEST METHOD ASTM D698.
 - THE SOIL SHALL NOT BE USED IF THE MATERIAL CONTAINS ORGANIC MATTER, RUBBLE, DEBRIS OR ANY OTHER DELETERIOUS MATERIAL.

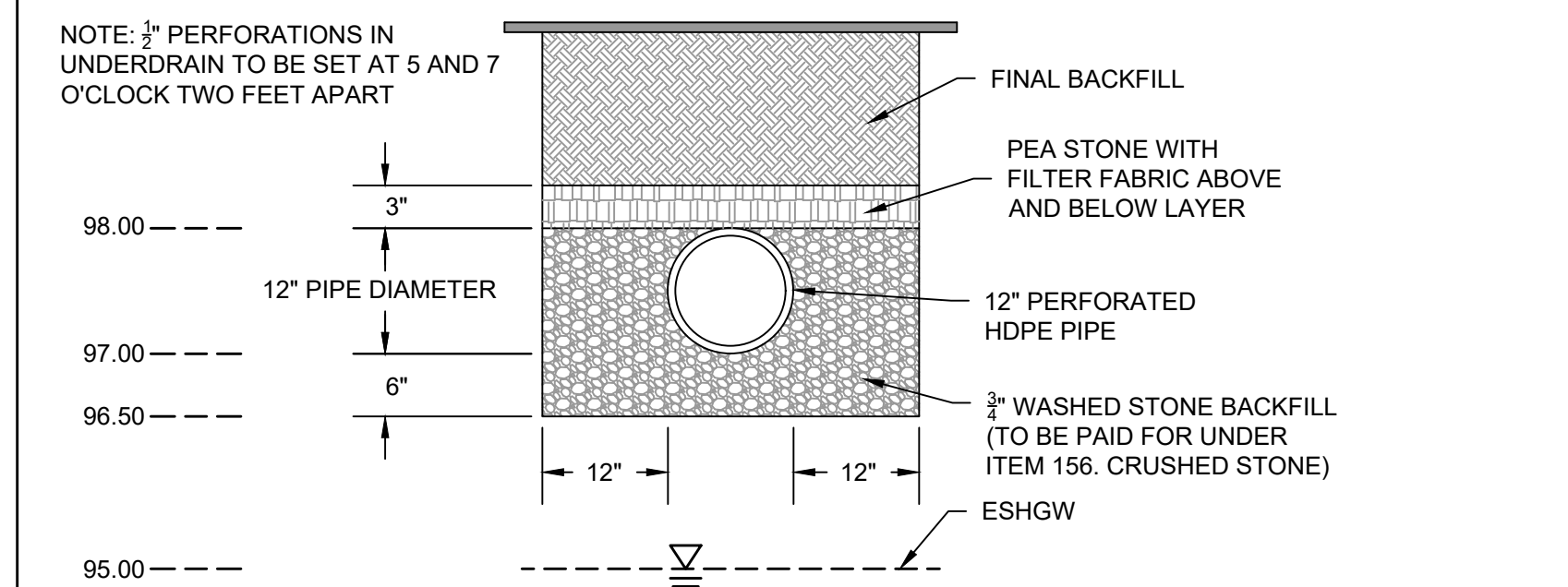
- SEE SITE PLAN FOR WIDTH
- SEE GRADING PLANS FOR GRADES
- PROVIDE MINIMUM 1/8" FT. CROSS-SLOPE
- PROVIDE CONTROL JOINTS 5'-0" O.C. MIN.
- PROVIDE EXPANSION JOINTS 20'-0" O.C. MIN.

MARK	DATE	DESCRIPTION
△	2/23/22	ADDENDUM NO. 3

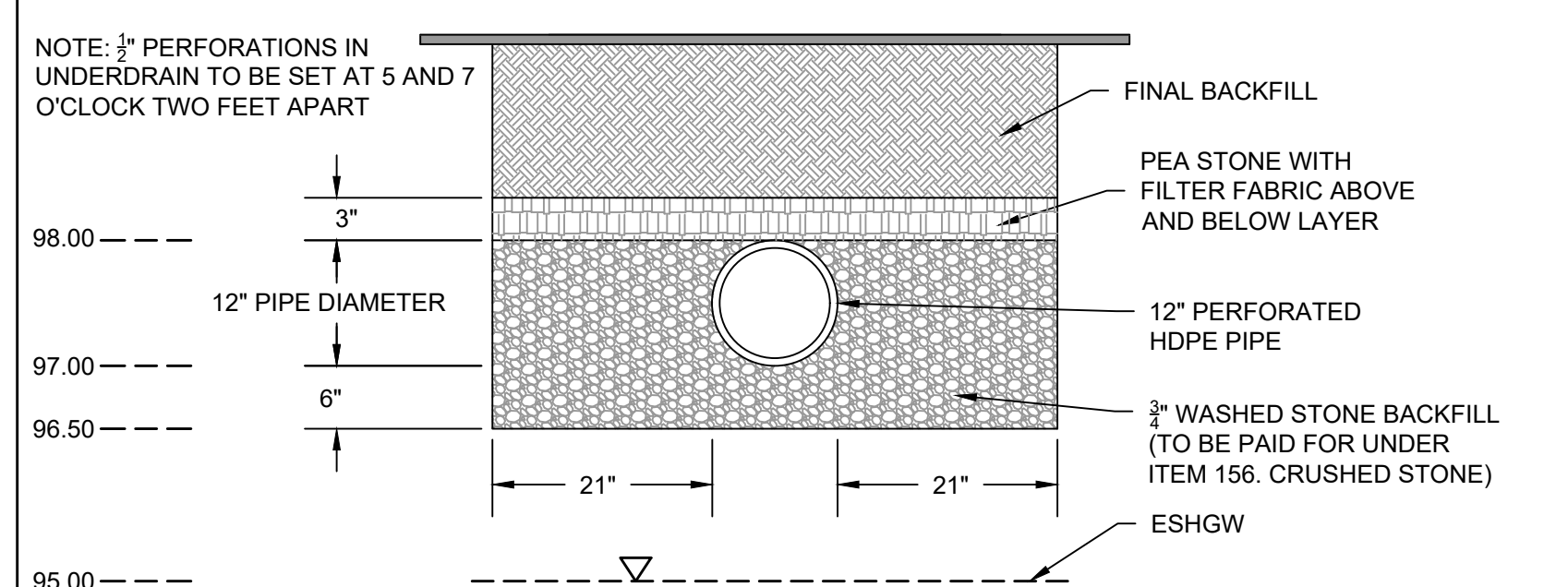
Scale	AS NOTED
Date	JANUARY 2022
Job No.	326-1902
Designed by	DJO/MMS
Drawn by	MMS
Checked by	DJO
Approved by	SDT/BLH



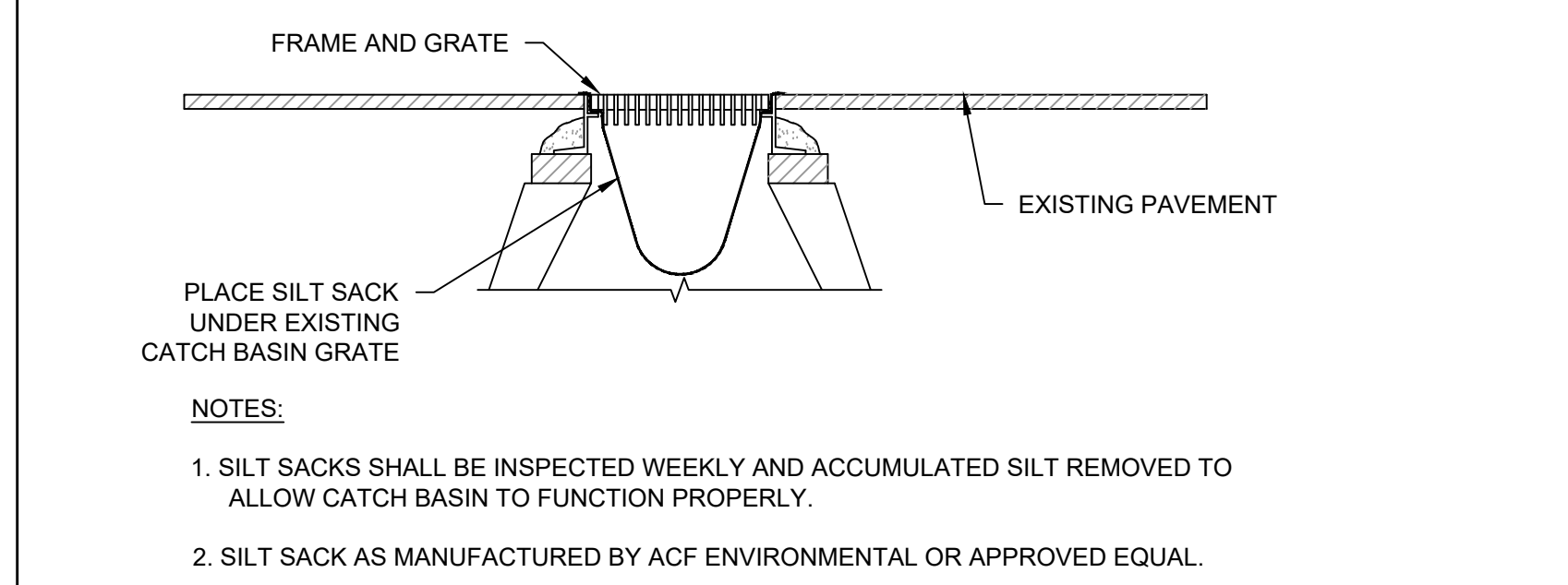
POROUS PAVEMENT DETAIL
SCALE: N.T.S.



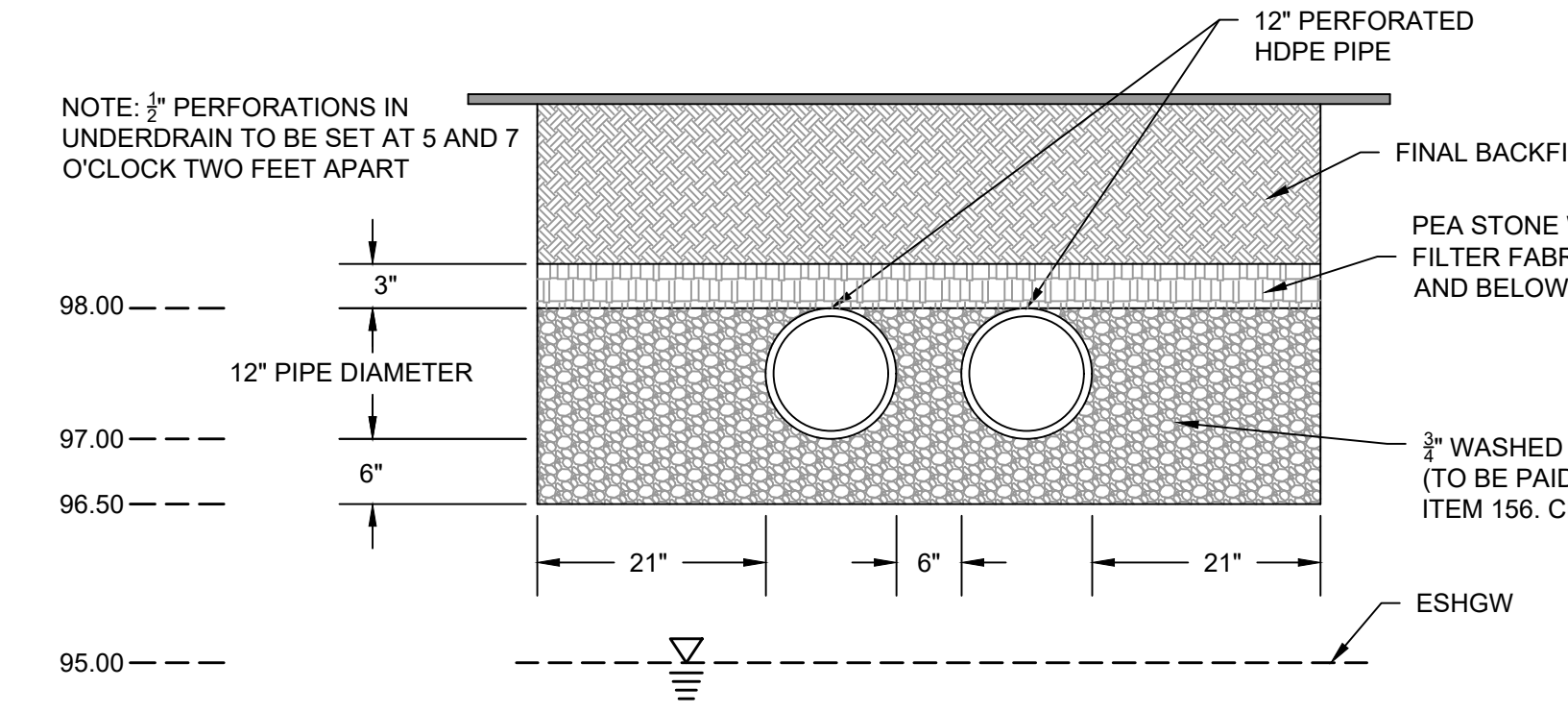
TYPICAL DRAIN INFILTRATION TRENCH DETAIL #1
SCALE: N.T.S.



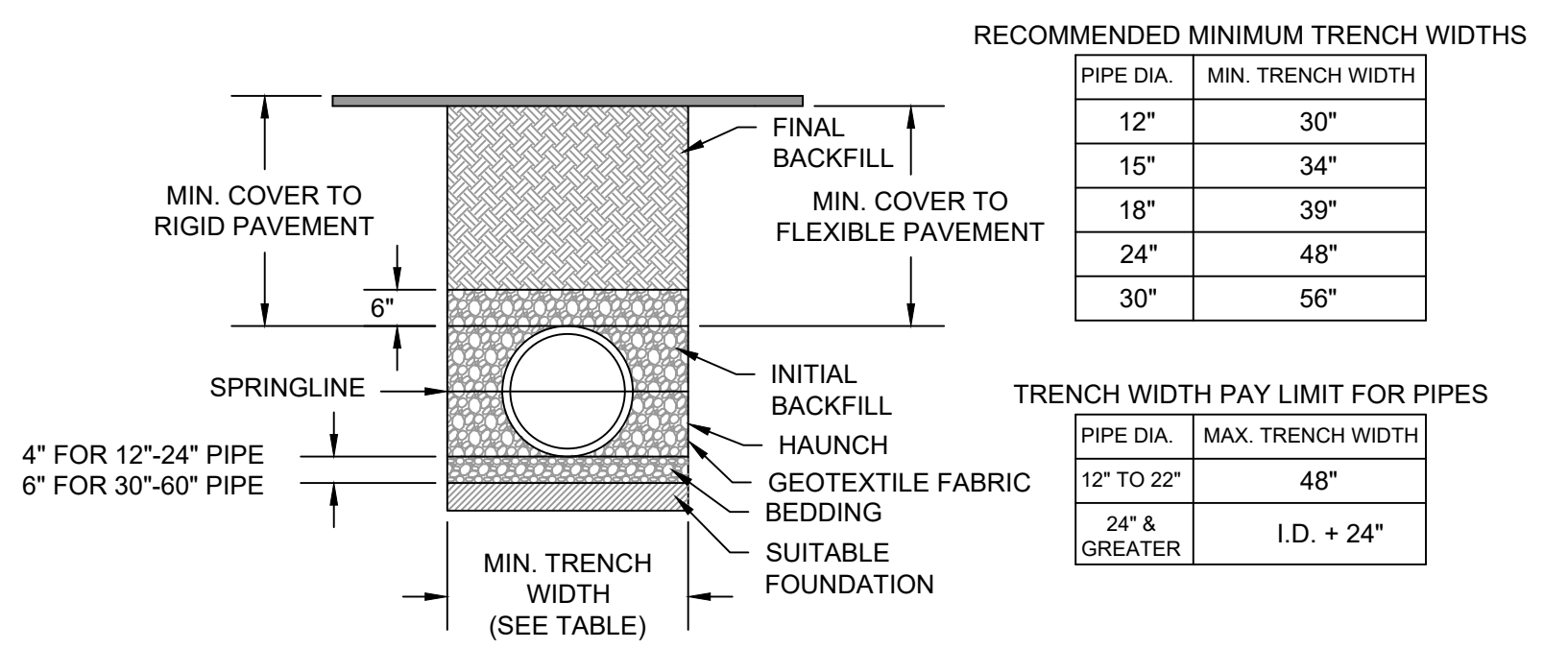
TYPICAL DRAIN INFILTRATION TRENCH DETAIL #2
SCALE: N.T.S.



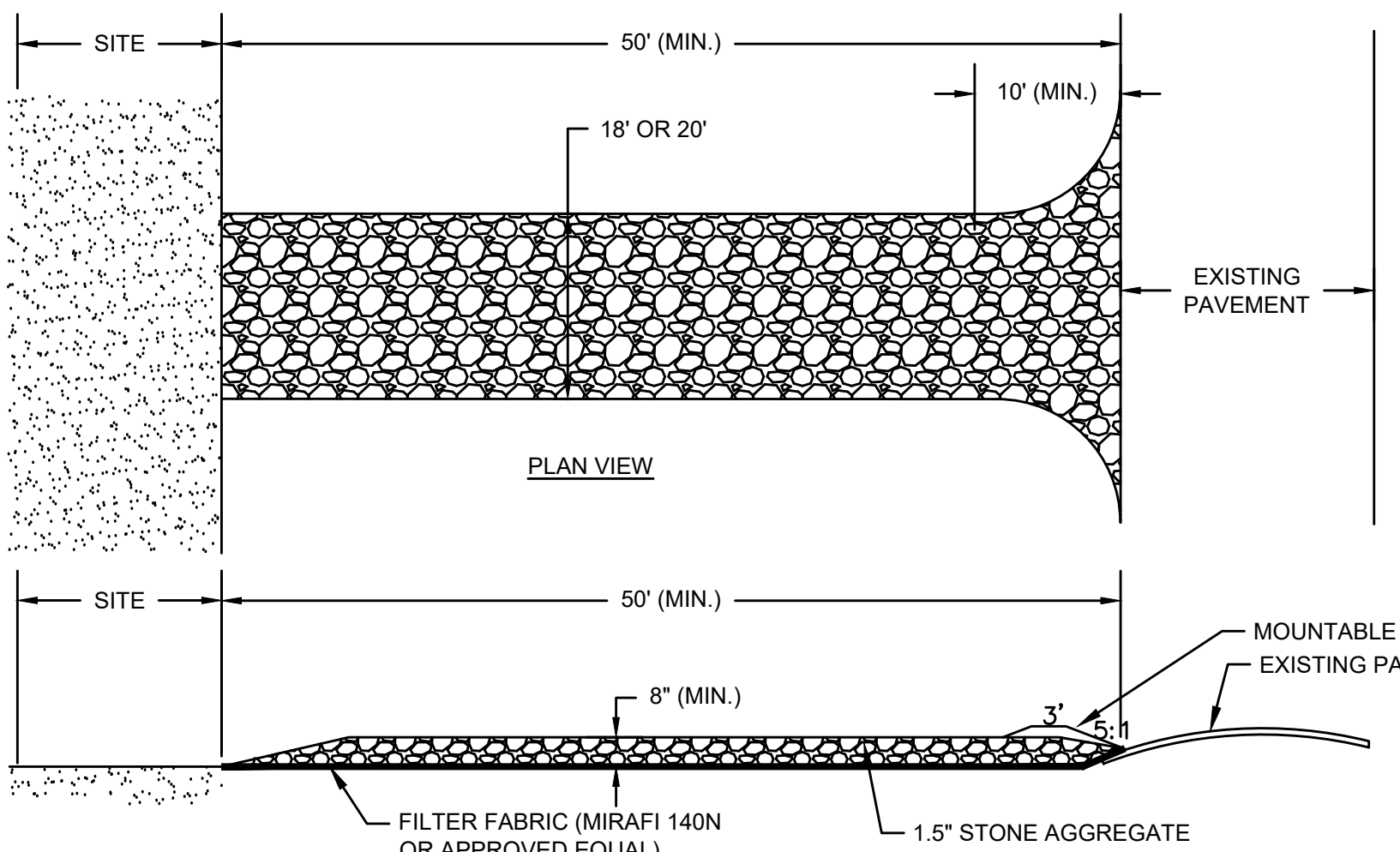
SEDIMENTATION CONTROL AT CATCH BASINS SILT SACKS
SCALE: N.T.S.



TYPICAL DRAIN INFILTRATION TRENCH DETAIL #3
SCALE: N.T.S.

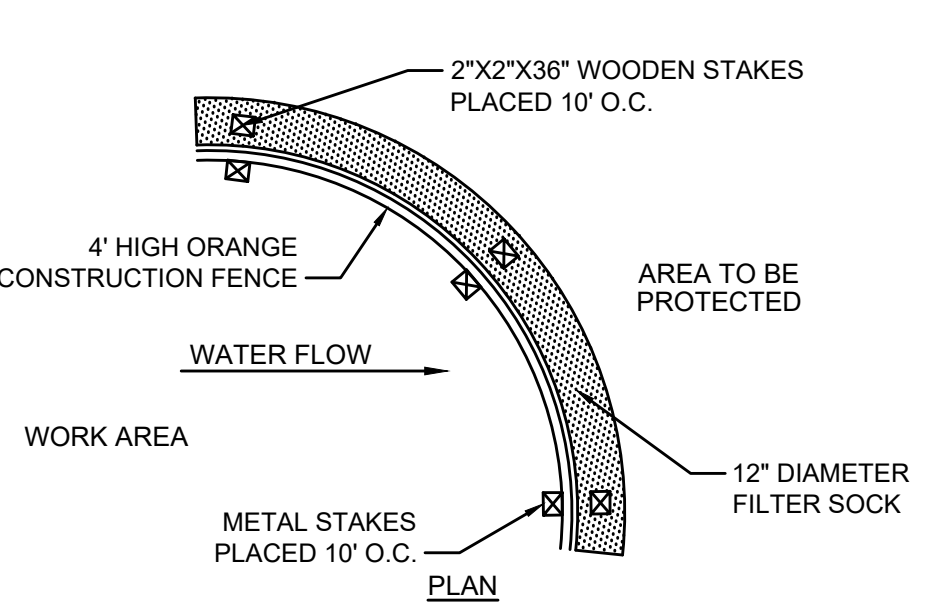
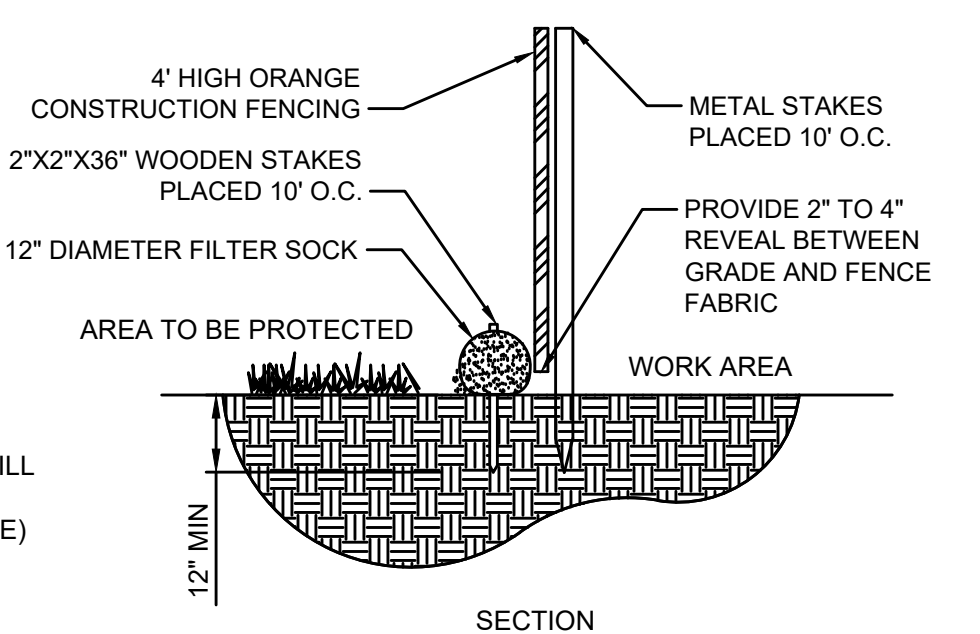


TYPICAL DRAIN TRENCH DETAIL #4
SCALE: N.T.S.

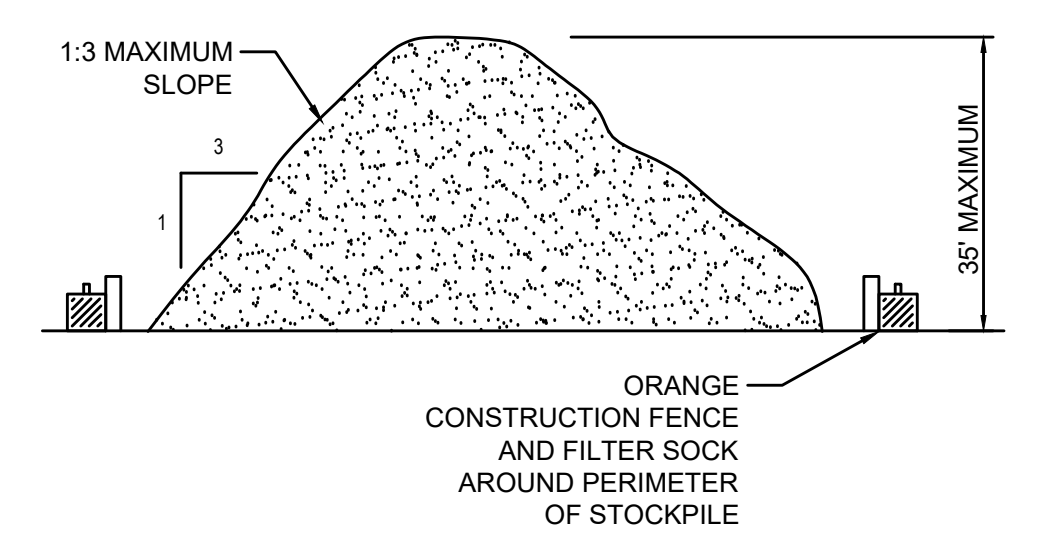


- NOTES:**
- THE CONTRACTOR SHALL COORDINATE WITH THE CITY AND LIBRARY'S REPRESENTATIVES FOR THE LOCATIONS AND LIMIT OF THE TEMPORARY ACCESS DRIVE PRIOR TO START OF CONSTRUCTION.
 - THE TEMPORARY ACCESS DRIVE WIDTH SHALL BE DETERMINE IN THE FIELD AS DIRECTED BY THE CITY.
 - THE TEMPORARY ACCESS DRIVE SHALL NOT EXTEND OFF THE PROPERTY
 - THE TEMPORARY ACCESS DRIVE SHALL BE MAINTAINED IN A CONDITION WHICH SHALL PREVENT TRACKING OR FLOWING OF SEDIMENT ONTO PUBLIC RIGHTS-OF-WAYS. THIS MAY REQUIRE PERIODIC TOP DRESSING WITH ADDITIONAL STONE AS CONDITIONS DEMAND AND REPAIR OR CLEANOUT OF ANY MEASURES USED TO REAP SEDIMENT. ALL SEDIMENT SPILLED, DROPPED, WASHED, OR TRACKED ONTO PUBLIC RIGHTS-OF-WAY MUST BE REMOVED IMMEDIATELY. BERM SHALL BE PERMITTED.
 - PERIODIC INSPECTION AND MAINTENANCE SHALL BE PROVIDED AS NEEDED OR AS DIRECTED BY THE /CITY.
 - MANUFACTURED COMPOSITE TRACKING PADS MADE OF ULTRA-HIGH-MOLECULAR-WEIGHT POLYETHYLENE (UHMWPE) MAY BE USED IN PLACE OF CRUSHED STONE AND FILTER FABRIC. PADS SHALL BE FODS TCM MODEL #1100 OR ENGINEER APPROVED EQUAL.

TEMPORARY ACCESS DRIVE
SCALE: N.T.S.



12\"/>



TEMPORARY STOCKPILE
SCALE: N.T.S.

EROSION CONTROL NOTES

- ALL SEDIMENT AND EROSION CONTROL MEASURES SHALL BE INSTALLED AS SET FORTH IN THE MOST CURRENT STATE SEDIMENT AND EROSION CONTROL MANUAL.
- AREAS UNDERGOING CONSTRUCTION WILL BE LEFT IN AN UNTREATED OR UNVEGETATED CONDITION CONSISTENT WITH THE REQUIREMENTS OF THE STORMWATER POLLUTION PREVENTION PLAN (SWPPP). AREAS SHALL BE PERMANENTLY STABILIZED WITHIN 15 DAYS OF FINAL GRADING AND TEMPORARILY STABILIZED WITHIN 14 DAYS OF CONSTRUCTION ACTIVITIES. IF THE DISTURBANCE IS WITHIN 100 FEET OF A STREAM, POND, OR WETLAND AREA, THE AREA SHALL BE STABILIZED WITHIN 7 DAYS OR PRIOR TO ANY STORM EVENT (THIS WOULD INCLUDE WETLANDS).
- SEDIMENT BARRIERS (SILT FENCE, STRAW BARRIERS, ETC.) SHOULD BE INSTALLED PRIOR TO ANY SOIL DISTURBANCE OF THE CONTRIBUTING DRAINAGE AREA UPSTREAM OF THE SEDIMENT BARRIERS. MULCH NETTING SHALL BE USED TO ANCHOR MULCH IN ALL AREAS WITH SLOPES GREATER THAN 15% AFTER OCTOBER 1ST THE SAME APPLIES FOR ALL SLOPES GREATER THAN 8%.
- INSTALL SILTATION BARRIER AT TOE OF SLOPE TO FILTER SILT FROM RUNOFF. SEE SILTATION BARRIER DETAILS FOR PROPER INSTALLATION. SILTATION BARRIER WILL REMAIN IN PLACE PER NOTE #5.
- ALL EROSION CONTROL STRUCTURES WILL BE INSPECTED, REPLACED AND/OR REPAIRED AS NEEDED AND IMMEDIATELY FOLLOWING ANY SIGNIFICANT RAINFALL OR SNOW MELT OR WHEN NO LONGER SERVICEABLE DUE TO SEDIMENT ACCUMULATION OR DECOMPOSITION. SEDIMENT DEPOSITS SHOULD BE REMOVED AFTER EACH STORM EVENT. THEY MUST BE REMOVED WHEN DEPOSITS REACH APPROXIMATELY ONE HALF THE HEIGHT OF THE BARRIER. SEDIMENT CONTROL DEVICES SHALL REMAIN IN PLACE AND BE MAINTAINED BY THE CONTRACTOR UNTIL AREAS UPSLOPE ARE STABILIZED BY TURF.
- NO SLOPES, EITHER PERMANENT OR TEMPORARY, SHALL BE STEEPER THAN THREE TO ONE (3:1).
- IF FINAL SEEDING OF THE DISTURBED AREAS IS NOT COMPLETED 45 DAYS PRIOR TO THE FIRST KILLING FROST, USE TEMPORARY MULCH (DORMANT SEEDING MAY BE ATTEMPTED AS WELL) TO PROTECT THE SITE AND DELAY SEEDING UNTIL THE NEXT RECOMMENDED SEEDING PERIOD.
- TEMPORARY SEEDING OF DISTURBED AREAS THAT HAVE NOT BEEN FINAL GRADED SHALL BE COMPLETED 45 DAYS PRIOR TO THE FIRST KILLING FROST TO PROTECT FROM SPRING RUNOFF PROBLEMS.
- DURING THE CONSTRUCTION PHASE, INTERCEPTED SEDIMENT WILL BE RETURNED TO THE SITE AND REGRADED ONTO OPEN AREAS.
- REVEGETATION MEASURES WILL COMMENCE UPON COMPLETION OF CONSTRUCTION EXCEPT AS NOTED ABOVE. ALL DISTURBED AREAS NOT OTHERWISE STABILIZED WILL BE GRADED, SMOOTHED, AND PREPARED FOR FINAL SEEDING AS FOLLOWS:
 - SIX INCHES OF LOAM WILL BE SPREAD OVER DISTURBED AREAS AND SMOOTHED TO A UNIFORM SURFACE.
 - APPLY LIMESTONE AND FERTILIZER ACCORDING TO SOIL TEST. IF SOIL TESTING IS NOT FEASIBLE ON SMALL OR VARIABLE SITES, OR WHERE TIMING IS CRITICAL, FERTILIZER MAY BE APPLIED AT THE RATE OF 800 LB PER ACRE OR 18.4 LB PER 1,000 SF USING 10-20-20 OR EQUIVALENT. APPLY GROUND LIMESTONE (EQUIVALENT TO 50% CALCIUM PLUS MAGNESIUM OXIDE) AT A RATE OF 3 TONS PER ACRE (138 LB PER 1,000 SF).
 - FOLLOWING SEED BED PREPARATION, DITCHES AND BACK SLOPES WILL BE SEEDED TO A MIXTURE OF 47% CREEPING RED FESCUE, 5% REDTOP, AND 48% TALL FESCUE. THE LAWN AREAS WILL BE SEEDED TO A PREMIUM TURF MIXTURE OF 44% KENTUCKY BLUE-GRASS, 44% CREEPING RED FESCUE, AND 12% PERENNIAL RYEGRASS. SEEDING RATE IS 1.03 LBS PER 1,000 SF LAWN QUALITY SOD MAY BE SUBSTITUTED FOR SEED.
 - STRAW MULCH AT THE RATE OF 70-90 LBS PER 1,000 SF. A HYDRO-APPLICATION OF WOOD OR PAPER FIBER SHALL BE APPLIED FOLLOWING SEEDING. A SUITABLE BINDER SUCH AS CURASOL OR RMB PLUS WILL BE USED ON STRAW MULCH FOR WIND CONTROL.
- ALL TEMPORARY EROSION CONTROL MEASURES SHALL BE REMOVED ONCE THE SITE IS STABILIZED.
- WETLANDS WILL BE PROTECTED W/ STRAW, COMPOST, AND/OR SILT FENCE BARRIERS INSTALLED AT THE EDGE OF THE WETLAND OR THE BOUNDARY OF WETLAND DISTURBANCE.
- ALL AREAS WITHIN 100 FEET OF A FLAGGED WETLAND OR STREAM SHALL HAVE AN EXPOSURE WINDOW OF NOT MORE THAN 7 DAYS.
- ALL AREAS WITHIN 100 FEET OF A FLAGGED WETLAND OR STREAM SHALL FOLLOW APPROPRIATE EROSION CONTROL MEASURES PRIOR TO EACH STORM IF NOT BEING ACTIVELY WORKED.

LOCATION	MULCH	RATE (1000 SF)
PROTECT AREA	STRAW	100 POUNDS
WINDY AREA	SHREDDED OR CHOPPED CORNSTALKS STRAW (ANCHORED)*	185-275 POUNDS 100 POUNDS
MODERATE TO HIGH VELOCITY AREAS OR STEEP SLOPES GREATER THAN 3:1	JUTE MESH OR EXCELSIOR MAT	AS REQUIRED
GREATER THAN 3:1	(REFER TO GEOTECHNICAL REPORT FOR FINAL DESIGN REQUIREMENT)	

* A HYDRO-APPLICATION OF WOOD, OR PAPER FIBER MAY BE APPLIED FOLLOWING SEEDING. A SUITABLE BINDER SUCH AS CURASOL OR RMB PLUS SHALL BE USED ON STRAW MULCH FOR WIND CONTROL.

MULCH ANCHORING
ANCHOR MULCH WITH PEG AND TWINE (1 SQ. YD/BLOCK); MULCH NETTING (AS PER MANUFACTURER); WOOD CELLULOSE FIBER (750 LBS/ACRE); CHEMICAL TACK (AS PER MANUFACTURER'S SPECIFICATIONS); USE OF A SERRATED STRAIGHT DISK. WETTING FOR SMALL AREAS AND ROAD DITCHES MAY BE PERMITTED.



MARK	DATE	DESCRIPTION
△	2/23/22	ADDENDUM NO. 3

Scale	AS NOTED
Date	JANUARY 2022
Job No.	326-1902
Designed by	DJO/MMS
Drawn by	MMS
Checked by	DJO
Approved by	SDT/BLH

THIS LINE IS ONE INCH LONG WHEN PLOTTED AT FULL SCALE ON A 22" X 34" DRAWING

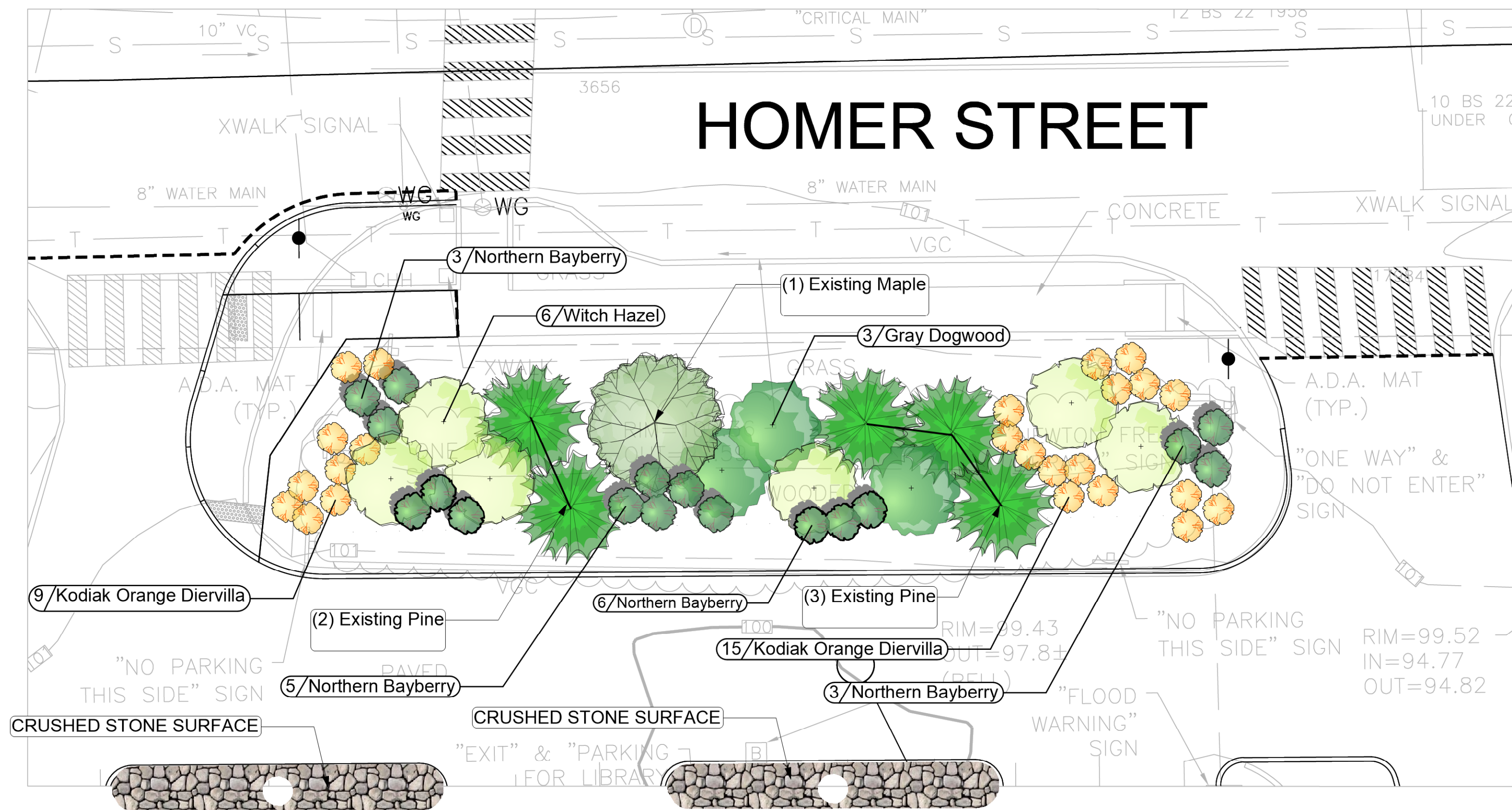
NEWTON FREE LIBRARY PARKING LOT
330 HOMER STREET
NEWTON, MASSACHUSETTS
MAP ID: 072SW, LOT ID: 64003 0005 (LOT 5, BLOCK 3, SECTION 64)

CONSTRUCTION DETAILS V

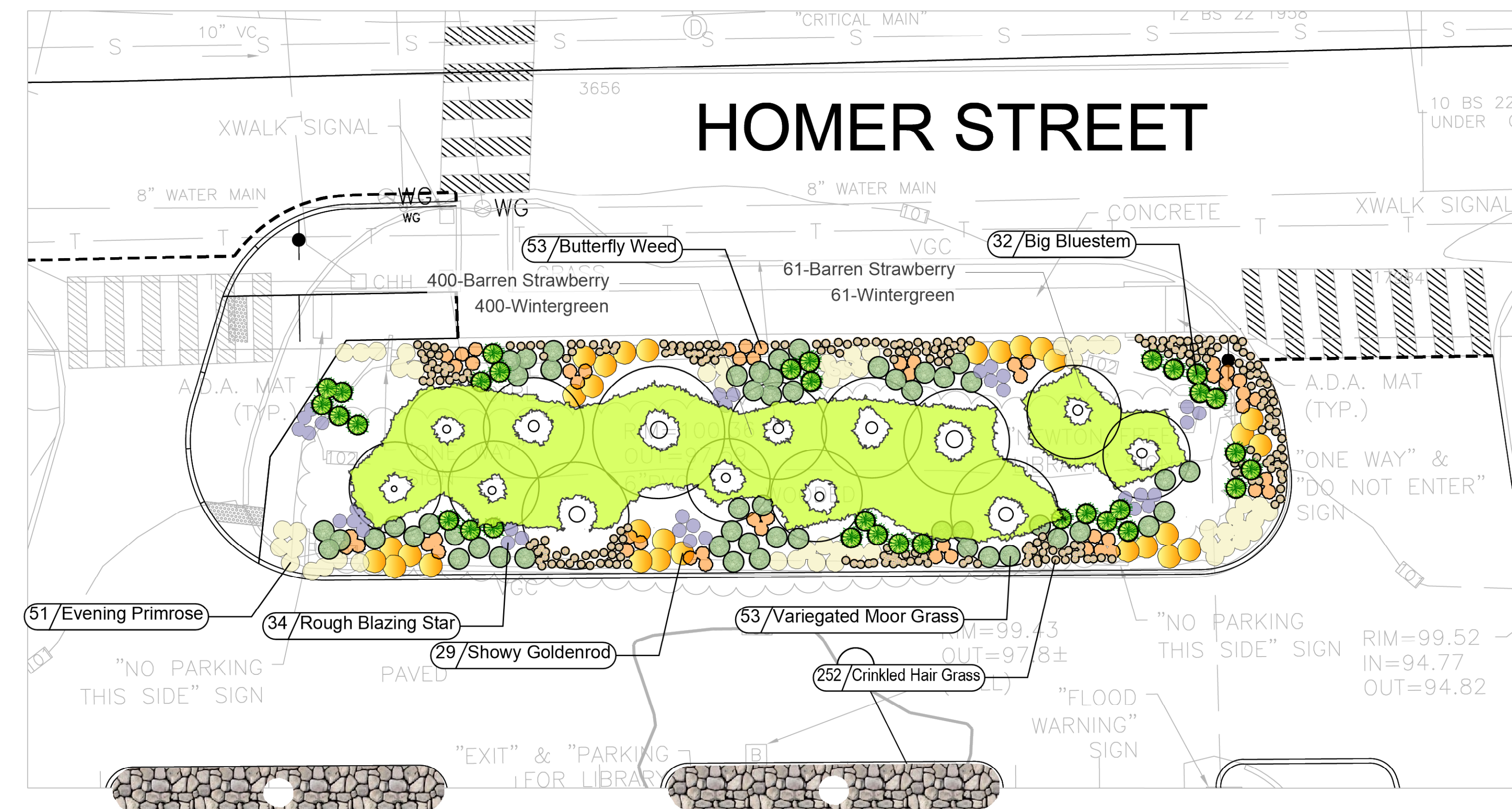
FOR CONSTRUCTION
Sheet No.

C-12

Drawing file: I:\Newton\326-1902-Newton - Free Library Parking lot\CAD\REF\Library Details (REV Addendum 3).dwg Plot Date: Feb 24, 2022 5:54pm



1
L1 ENLARGEMENT PLAN 1 – EXISTING TREES AND PROPOSED SHRUBS
SCALE: 1"=10'-0"



2
L1 ENLARGEMENT PLAN 2 – PERENNIALS, GRASSES AND GROUNDCOVERS
SCALE: 1"=10'-0"

PLANTING SCHEDULE				
Qty.	Latin Name	Common Name	Size	Notes
Shrubs				
11	ARONIA ARBUTIFOLIA 'BRILLANTISSIMA'	RED CHOKEBERRY	5 Gal.	Container
3	CORNUS RACEMOSA	GRAY DOGWOOD	10 Gal.	Container
28	CORNUS SERICEA 'ARCTIC FIRE'	RED OSIER DOGWOOD	5 Gal.	Container
24	DIERVILLA 'KODIAK ORANGE'	KODIAK ORANGE DIERVILLA	3 Gal.	Container
6	HAMAMELUS VIRGINIANA	AMERICAN WITCHHAZEL	4/5' Ht.	B&B
34	ILEX GLABRA 'COMPACTA'	COMPACT INKBERRY	5 Gal.	Container
29	MYRICA PENNSYLVANICA	NORTHERN BAYBERRY	5 Gal.	Container
Perennials, Grasses, Groundcovers				
191	AMSONIA TABERNAEMONTANA 'BLUE ICE'	BLUE STAR AMSONIA	1 Gal.	Container
32	ANDROPOGON GERARDII	BIG BLUESTEM	2 Gal.	Container
260	ASCLEPIAS TUBEROSA	BUTTERFLY MILKWEED	1 Gal.	Container
11	ASTER NOVAE-ANGLIAE 'PURPLE DOME'	NEW ENGLAND ASTER	1 Gal.	Container
601	CAREX PENNSYLVANICA	PENNSYLVANIAN SEDGE	1 quart	Container
38	COREOPSIS LANCEOLATA 'MOONBEAM'	WHORLED TICKSEED	1 Gal.	Container
252	DESCHAMPSIA FLEXUOSA	WAVY HAIR GRASS	1 Gal.	Container
461	GAULTHERIA PROCUMBENS	WINTERGREEN	4" Pot	Container
394	IRIS VERSICOLOR	BLUE FLAG IRIS	1 Gal.	Container
315	LIATRIS ASPERA	ROUGH BLAZING STAR	1 Gal.	Container
21	LOBELIA CARDINALIS	CARDINAL FLOWER	1 Gal.	Container
53	MOLINIA CAERULEA	PURPLE MOOR GRASS	2 Gal.	Container
78	MONARDA FISTULOSA	WILD BERGAMOT	1 Gal.	Container
51	OENOTHERA FRUTICOSA	EVENING PRIMROSE	1 Gal.	Container
184	PANICUM VIRGATUM	SWITCH GRASS	2 Gal.	Container
532	RUDBECKIA 'AMERICAN GOLD RUSH'	BLACK-EYED SUSAN	1 Gal.	Container
398	SCHIZACHYRIUM SCOPARIUM	LITTLE BLUESTEM	2 Gal.	Container
29	SOLIDAGO SPECIOSA	SHOWY GOLDENROD	1 Gal.	Container
730	WALDSTEINIA FRAGARIOIDES	BARREN STRAWBERRY	1 quart	Container

NOTE: CRUSHED STONE TO BE 3/4" WASHED STONE, 6" DEPTH

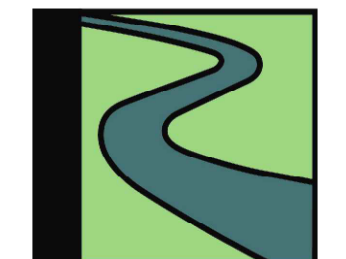
NEWTON FREE LIBRARY PARKING LOT

Newton, MA

Owner

City of Newton

Landscape Architect



Radner Design Associates, Inc.

3 Allied Drive, Suite 303
Dedham, MA 02026
508.736.6144

www.RadnerDesign.com

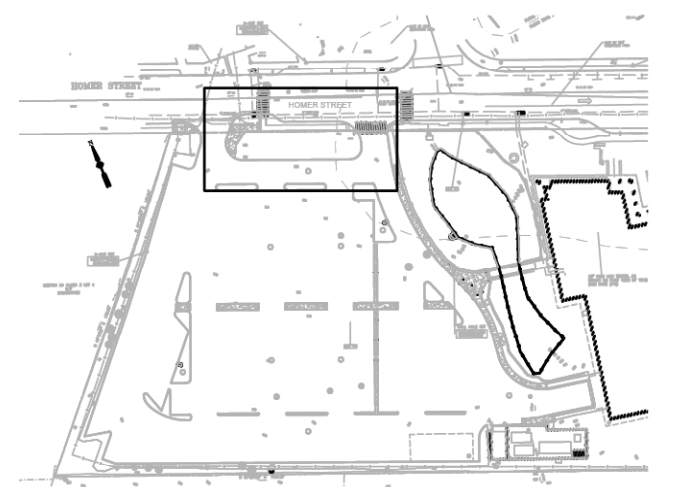


ADDENDUM NO. 3 - DATED 2/23/22
Revision:

Drawn: kc

Checked: mr

Scale: 1"=10'-0"



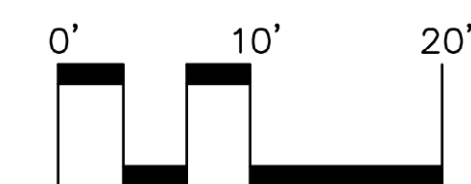
Sheet Name:
Enlargement Plan 1

Project No.:
21-10

Issue Date:
01/28/2022

Sheet No.:

L1

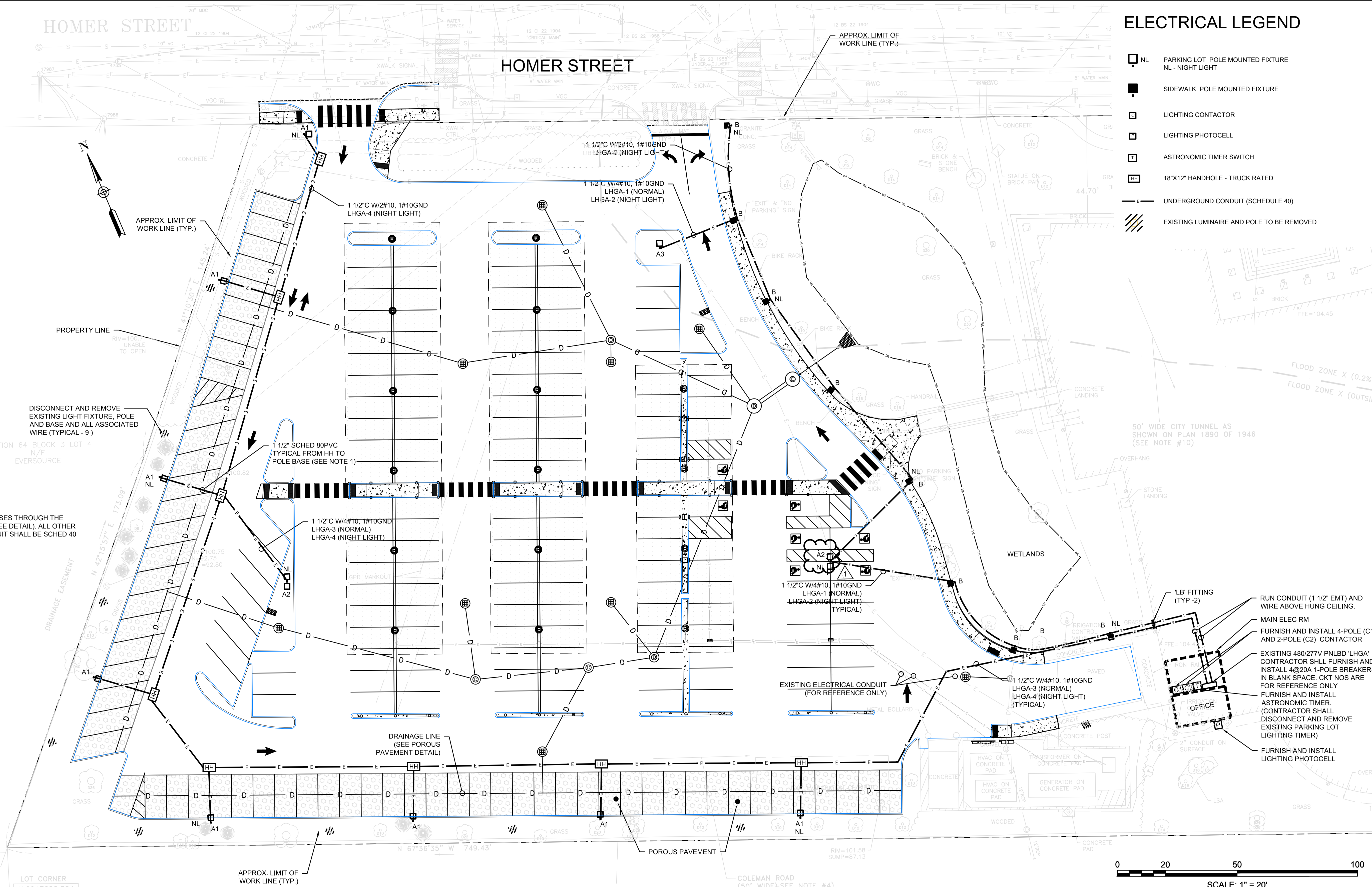


HOMER STREET

HOMER STREET

ELECTRICAL LEGEND

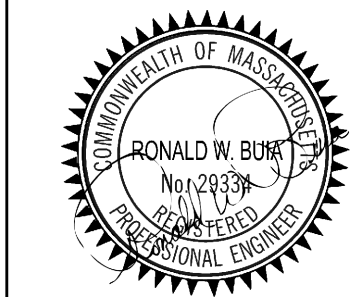
- NL PARKING LOT POLE MOUNTED FIXTURE
NL - NIGHT LIGHT
- SIDEWALK POLE MOUNTED FIXTURE
- LIGHTING CONTACTOR
- LIGHTING PHOTOCELL
- ASTRONOMIC TIMER SWITCH
- 18"x12" HANDHOLE - TRUCK RATED
- UNDERGROUND CONDUIT (SCHEDULE 40)
- EXISTING LUMINAIRE AND POLE TO BE REMOVED



NOTES:
 1. THIS 1 1/2" RUN CROSSES THROUGH THE POROUS PAVEMENT (SEE DETAIL). ALL OTHER UNDERGROUND CONDUIT SHALL BE SCHED 40 PVC.

- RUN CONDUIT (1 1/2" EMT) AND WIRE ABOVE HUNG CEILING.
- MAIN ELEC RM
- FURNISH AND INSTALL 4-POLE (C1) AND 2-POLE (C2) CONTACTOR
- EXISTING 480/277V PNLBD 'LHGA' CONTRACTOR SHALL FURNISH AND INSTALL 4@20A 1-POLE BREAKERS IN BLANK SPACE. CKT NOS ARE FOR REFERENCE ONLY
- FURNISH AND INSTALL ASTRONOMIC TIMER. (CONTRACTOR SHALL DISCONNECT AND REMOVE EXISTING PARKING LOT LIGHTING TIMER)
- FURNISH AND INSTALL LIGHTING PHOTOCELL

Ronald W. Buia, Inc.
Electrical Engineers
 5 Tilton Lane, Andover, MA 01810
 TEL: 978.475.5184
 BUIAENGINEERING.COM



Scale	AS NOTED
Date	1/28/2022
Job No.	268.01.21
Designed by	KML
Drawn by	KML
Checked by	RWB
Approved by	RWB
1	2/23/22 ADDENDUM NO. 3
1	1/28/22 CONSTRUCTION DOCUMENTS

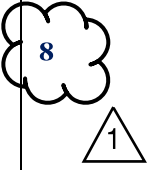
THIS LINE IS ONE INCH LONG WHEN PLOTTED AT FULL SCALE ON A 22" X 34" DRAWING

NEWTON FREE LIBRARY PARKING LOT
 330 HOMER STREET
 NEWTON, MASSACHUSETTS
 MAP ID: 072SW, LOT ID: 64003 0005 (LOT 5, BLOCK 3, SECTION 64)

LIGHTING PLAN

FOR REVIEW
 Sheet No.

E-01

ITEM DESCRIPTION & BID PRICE	EST. QTY*	UNIT	TOTAL COST
<p>ITEM 804.15: 1 ½ INCH ELECTRICAL CONDUIT TYPE NM – PLASTIC – (UL)</p> <p>THE SUM OF: _____ DOLLARS</p> <p>AND _____ CENTS</p> <p>(\$ _____) PER FOOT</p>	1,500	FT	\$ _____
<p>ITEM 811.27: ELECTRIC HANDHOLE (MUNICIPAL STANDARD)</p> <p>THE SUM OF: _____ DOLLARS</p> <p>AND _____ CENTS</p> <p>(\$ _____) PER EACH</p>		EA	\$ _____
<p>ITEM 811.37: ELECTRIC HANDHOLE ADJUSTED</p> <p>THE SUM OF: _____ DOLLARS</p> <p>AND _____ CENTS</p> <p>(\$ _____) PER EACH</p>	2	EA	\$ _____
<p>ITEM 812.09: LIGHT STANDARD FOUNDATION PRECAST</p> <p>THE SUM OF: _____ DOLLARS</p> <p>AND _____ CENTS</p> <p>(\$ _____) PER EACH</p>	18	EA	\$ _____
<p>ITEM 813.3: WIRE TYPE 7 NO. 10 GENERAL PURPOSE</p> <p>THE SUM OF: _____ DOLLARS</p> <p>AND _____ CENTS</p> <p>(\$ _____) PER FOOT</p>	6,000	FT	\$ _____

1

ITEM DESCRIPTION & BID PRICE	EST. QTY*	UNIT	TOTAL COST
ITEM 823.172: ELECTRICAL ROOM CONDUIT AND FITTINGS THE SUM OF: _____ DOLLARS AND _____ CENTS (\$ _____) PER LUMP SUM	1	LS	\$ _____
ITEM 823.51: PHOTO ELECTRIC CONTROL THE SUM OF: _____ DOLLARS AND _____ CENTS (\$ _____) PER EACH	1	EA	\$ _____
ITEM 823.52: MULTIPLE CONTROL CONTACTOR THE SUM OF: _____ DOLLARS AND _____ CENTS (\$ _____) PER EACH	2	EA	\$ _____
ITEM 823.53: TIME CLOCK THE SUM OF: _____ DOLLARS AND _____ CENTS (\$ _____) PER EACH	1	EA	\$ _____
ITEM 823.71: PARKING LOT LIGHT POLE AND LUMINAIRE REMOVED AND DISCARDED THE SUM OF: _____ DOLLARS AND _____ CENTS (\$ _____) PER EACH	8	EA	\$ _____
ITEM 832.: WARNING-REGULATORY AND ROUTE MARKER - ALUMINUM PANEL (TYPE A) THE SUM OF: _____ DOLLARS AND _____ CENTS (\$ _____) PER SQUARE FOOT	120	SF	\$ _____

The work under this item shall conform to the applicable requirements of MassDOT Specifications Section 820, Highway Lighting, except as amended and supplemented as indicated on the drawings and as specified below.

GENERAL

The Contractor shall coordinate with the City and Newton Library before starting any work. The work shall include the installation of conduit, wire and fittings in the existing building and furnishing and installing all materials, equipment and labor necessary to provide a complete installation of a lighting system. The work shall include designing of electrical circuitry in accordance with approved shop drawings and complying with all applicable codes and standards.

All work shall be performed by a licensed electrician (licensed in the Commonwealth of Massachusetts).

DESCRIPTION

The contractor shall furnish all supervision, materials, equipment, accessories, handling, shipping and delivery to provide the specified Lighting System as detailed herein, complete with all appurtenances. All transportation, handling, shipping costs, manufacturer's storage and other necessary costs shall be included.

This work shall include providing all labor, equipment, and materials to install the Conduit, wire and fittings, and all other items necessary to provide a complete and operational system. This work shall be done in accordance with the Standard Specifications and these Special Provisions, and as detailed on the Drawings.

MATERIALS

1 ½" EMT
LB fittings

WIRING

Under Item 813.30 and 813.521

COLOR CODE

All conductors shall have color-coded insulation to designate ground, neutral conductor and phases. Colored tape alone is not acceptable. Phases shall be black and red, receptacle branch circuit shall be black, neutral shall be white and ground shall be green.

WIRE MARKERS

Shall be plastic cable wrap type with marking tag for permanent tagging. Plastic tag shall have controller and circuit number written on it with permanent ink marking pen per tag manufacturer's directions. Panduit PLF1MA-C Marker Tie, or equivalent.

SPLICES AND JUNCTIONS:

All splices and junctions shall be made waterproof by a UL approved method. Conductor splice shall be made by UL listed compression type butt splice kit. Waterproofing method shall be by heat shrink, by sealant in waterproof splice cap, or by sealant in cold shrink.

#10 AWG or Smaller, above grade: UL listed compression type connectors.

#8 AWG or Larger, above grade: UL listed mechanical compression connector.

Splices and junctions shall not be buried or installed in conduit.

Splices in junction boxes shall be UL listed hydraulic compression (12 tons minimum) type butt or two-wire stub splice with UL listed heat shrink waterproof splice cover.

End caps shall be used to seal and insulate the ends of 1/C wires. End caps shall be waterproof of thermally stabilized, modified polyolefin heat shrink material with mastic sealant inside UL listed 600 Volt, 90 degrees C.

Wet location splices and junctions shall be accomplished with UL listed heat shrink 600 Volt, 90 degrees C, waterproof splice kits. Raychem Series MCK, Type V or L or equivalent.

EXECUTION

- Provide supports for conduits at intervals not exceeding 5 feet.
- Raceway routing is shown on plans in approximate locations, unless dimensioned. Route to complete the wiring system.
- Arrange raceway supports to prevent misalignment during wiring installation.
- Support raceway using coated steel or malleable iron straps, lay-in adjustable hangers, clevis hangers, and split hangers.
- Group related raceway; support using conduit rack. Do not support raceway with wire or perforated pipe straps. Remove wire used for temporary supports
- Do not attach raceway to ceiling support wires or other piping systems. Route exposed raceway parallel and perpendicular to walls.
- Install no more than equivalent of three 90 degree bends between boxes. Install conduit bodies to make sharp changes in direction, as around beams.
- Avoid moisture traps; install junction box with drain fitting at low points in conduit system.
- Install fittings to accommodate expansion and deflection where raceway crosses control and expansion joints.
- Install suitable caps to protect installed conduit against entrance of dirt and moisture.
- Surface Raceway: Install flat-head screws, clips, and straps to fasten raceway channel to surfaces; mount plumb and level. Install insulating bushings and inserts at connections to outlets and corner fittings.
- In areas outside the limits of grading where new conduits are installed in existing grass areas, the work shall include the placement of a minimum of 4 inches (4") of topsoil and sod to restore the disturbed areas to their original condition. This work shall be incidental to the pertinent work item.

BASIS OF PAYMENT

Work under this item shall be at the Contract Unit Prices bid under Item 823.172 Electrical Room Conduit and Fittings per Lump Sum, which price shall constitute full compensation for all labor, tools, and equipment, and all incidental costs required for furnishing and installing the light fixture and lamped in place for the satisfactory completion of this work as specified.