

CITY OF NEWTON, MASSACHUSETTS  
PURCHASING DEPARTMENT  
[purchasing@newtonma.gov](mailto:purchasing@newtonma.gov)  
Fax (617) 796-1227

March 3, 2022

ADDENDUM #5  
INVITATION FOR BID #22-46

**NEWTON FREE LIBRARY PARKING LOT IMPROVEMENTS**

**THIS ADDENDUM PROVIDES ADDITIONAL LANDSCAPE DRAWINGS AND CLARIFIES THE ANSWER FROM ADDENDUM #3:**

**Q1. Is item 0.303DLA-A to waive the differential cost of fuel or differential cost of liquid asphalt? The way it is worded in the bid form and specs seems to conflict.**

**A1. Item 0.303DFC-A: Differential Fuel Costs for Asphalt, Item 0.303DFC-EXB: Differential Fuel Costs for Excavation and Backfill, Item 0.303DLA-A: Differential for Liquid Asphalt for Asphalt, and Item 0.303DPC-C: Differential for Portland Cement Concrete shall be deleted from this project**

*On page 6 of the Project Manual, within the Instruction to Bidders section, delete the bullet points under "Price Adjustment Clauses – to apply as follows:", and replace with the following:*

**This Contract contains price adjustments for hot mix asphalt and Portland cement mixtures, diesel fuel, and gasoline. Price adjustments shall be made on a monthly basis when the monthly change from the Base Price is +/- 5 percent. Base prices for this contract shall be the period prices posted on the MassDOT website, [MassDOT current contract price adjustments | Mass.gov](#), at the time Invitation For Bid 22-46 (IFB) was issued. For reference the base prices are as follows: liquid asphalt \$650.00 per ton, Portland cement \$165.52 per ton, diesel fuel \$3.376 per gallon, and gasoline \$2.958 per gallon.**

*Within the bid form section of the Project Manual, delete bid form from page 67 and page 68.*

*Replace bid form page 69 with the attached updated bid form, with changes incorporated as part of Revision No. 2 clouded.*

*On page 117 of the Project Manual, within the Scope of Work section, add the following paragraph after the Traffic Officers section.*

**PRICE ADJUSTMENTS**

**In accordance with MGL Chapter 30, Section 38A, this Contract shall be subject to the MassDOT Special provisions for price adjustment relative to energy escalation. Price adjustments for hot mix asphalt and Portland cement mixtures, diesel fuel and gasoline shall be made on a monthly basis when the monthly change from the Base Price is +/- 5 percent. Base prices for this contract shall be the period prices posted on the MassDOT website, [MassDOT current contract price adjustments | Mass.gov](#), at the time the IFB was issued. For reference the base prices are as follows: liquid asphalt \$650.00 per ton, Portland cement \$165.52 per ton, diesel fuel \$3.376 per gallon, and gasoline \$2.958 per gallon.**

*Within the Construction Specification section of the Project Manual, replace the attached updated item list on page 118, with changes incorporated as part of Revision No. 2 clouded.*

*Within the Construction Specification Section of the Project Manual, delete special provision for Item 0.303DFC-A, Item 0.303DFC-EXB, Item 0.303DLA-A and, Item 0.303DPC-C from page 120 to page 125.*

Q6. The planting schedule on drawing L1 has some different quantities than what is called out on all the landscape drawings. Some quantities are higher and some are lower. Since this is a lump sum item are we supposed to base it off the quantities in the planting schedule or the quantities called out on the drawings?

A6. **The quantities for the planting should be based on the landscape drawings instead of the planting schedule.**

*Replace plan set Sheet L1, Enlargement Plan 1, and Sheet L3, Enlargement Plan 4, with the attached updated plan sheets; changes made to the Planting Schedule table and Enlargement Plan 4 – Perennials as part of Revision No. 2 are clouded.*

All other terms and conditions of this bid remain unchanged.

**PLEASE ENSURE THAT YOU ACKNOWLEDGE ALL ADDENDA ON YOUR  
BID FORM. FAILURE TO ACKNOWLEDGE ALL ADDENDA COULD  
RESULT IN REJECTION OF YOUR BID AS NONRESPONSIVE.**

Thank you.

A handwritten signature in black ink that reads "Nicholas Read". The signature is written in a cursive, slightly slanted style.

Nicholas Read  
*Chief Procurement Officer*

ITEM DESCRIPTION & BID PRICE	EST. QTY*	UNIT	TOTAL COST
<div style="display: flex; align-items: center;"> <div style="border: 1px solid black; padding: 2px; margin-right: 10px;">2</div> <div> <p><b>ITEM 102.1: TREE TRIMMING</b></p> <p>THE SUM OF: _____ DOLLARS</p> <p>AND _____ CENTS</p> <p>(\$ _____ ) PER <b>FOOT</b></p> </div> </div>	<b>500</b>	<b>FT</b>	\$ _____
<p><b>ITEM 102.511: TREE PROTECTION ARMORING AND PRUNING</b></p> <p>THE SUM OF: _____ DOLLARS</p> <p>AND _____ CENTS</p> <p>(\$ _____ ) PER <b>EACH</b></p>	<b>14</b>	<b>EA</b>	\$ _____
<p><b>ITEM 102.521: TREE AND PLANT PROTECTION FENCE</b></p> <p>THE SUM OF: _____ DOLLARS</p> <p>AND _____ CENTS</p> <p>(\$ _____ ) PER <b>FOOT</b></p>	<b>200</b>	<b>FT</b>	\$ _____
<p><b>ITEM 120.1: UNCLASSIFIED EXCAVATION</b></p> <p>THE SUM OF: _____ DOLLARS</p> <p>AND _____ CENTS</p> <p>(\$ _____ ) PER <b>CUBIC YARD</b></p>	<b>1,780</b>	<b>CY</b>	\$ _____

CITY OF NEWTON

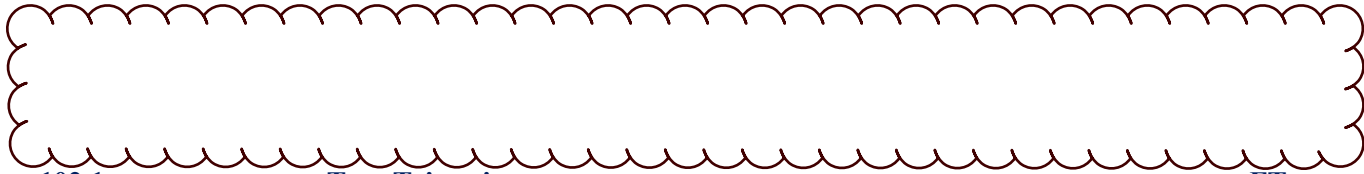
CONSTRUCTION SPECIFICATIONS

**ITEMS**

The following items reflect special conditions particular to this project. As such, they amend and/or supplement the provisions governing the Item, as described in the MassDOT Standard Specifications.

**METHOD OF AWARD**

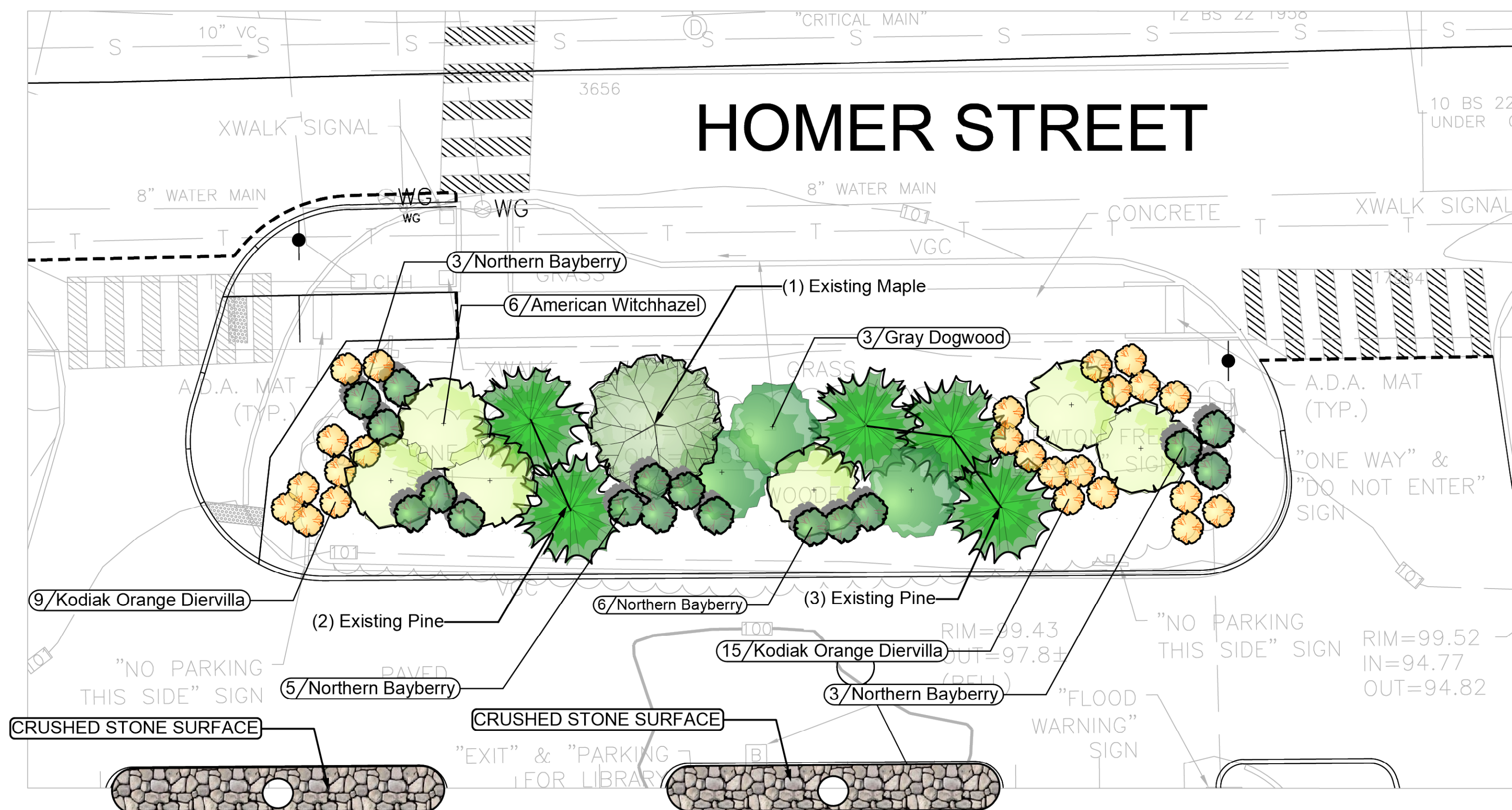
**TO ENSURE CONTRACTOR ACCOUNTABILITY, THE OWNER INTENDS TO AWARD ALL ITEMS TO A SINGLE CONTRACTOR. ACCORDINGLY, CONTRACTORS MUST BID ON ALL ITEMS OF WORK, AND THE LOW BIDDER WILL BE THE CONTRACTOR WHOSE TOTAL BID PRICE IS THE LOWEST. THE BID QUANTITIES ARE NOT GUARANTEED, AND THEIR PRIMARY PURPOSE IS FOR THE DETERMINATION OF THE LOW BIDDER.**



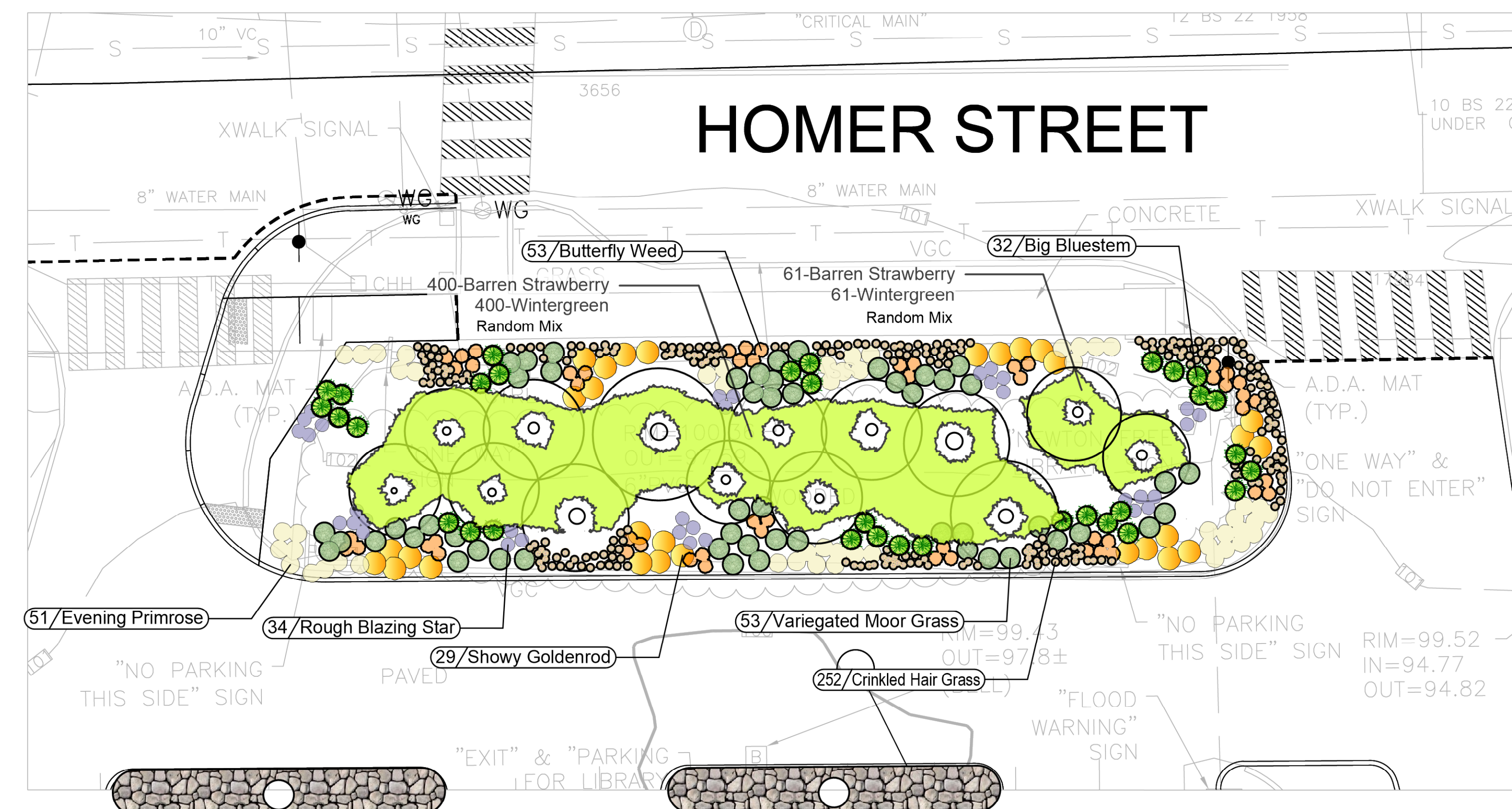
102.1	Tree Trimming	FT
102.511	Tree Protection – Armoring and Pruning	EA
102.521	Tree and Plant Protection Fence	FT
120.1	Unclassified Excavation	CY
141.1	Test Pit for Exploration	CY
151.	Gravel Borrow	CY
158.	Temporary Access Drive	SY
170.	Fine Grading and Compacting – Subgrade Area	SY
201.	Catch Basin	EA
202.	Manhole	EA
203.	Manhole (6 Foot Diameter)	EA
222.3	Frame and Grate (or Cover) Municipal Standard	EA
223.1	Frame and Grate (or Cover) Removed and Stacked	EA
251.041	4 Inch Perforated High-Density Polyethylene Pipe (HDPE)	FT
251.06	6 Inch High-Density Polyethylene Pipe (HDPE)	FT
251.118	18 Inch High-Density Polyethylene Pipe (HDPE) Flared End	EA
251.121	12 Inch Perforated High-Density Polyethylene Pipe (HDPE)	FT
251.18	18 Inch High-Density Polyethylene Pipe (HDPE)	FT
403.	Reclaimed Pavement for Base Course and/or Sub-base	SY
450.23	SUPERPAVE Surface Course – 12.5 (SSC – 12.5)	TON
450.31	SUPERPAVE Intermediate Course – 12.5 (SIC – 12.5)	TON
461.	Porous Pavement	SF
472.	Temporary Asphalt Patch	TON
504.	Granite Curb Type VA4 – Straight	FT
504. 1	Granite Curb Type VA4 – Curved	FT
509.	Granite Transition Curb for Pedestrian Curb Ramps – Straight	FT
509.1	Granite Transition Curb for Pedestrian Curb Ramps – Curved	FT
580.	Curb Removed and Reset	FT
594.	Curb Removed and Discarded	FT







1 ENLARGEMENT PLAN 1 – EXISTING TREES AND PROPOSED SHRUBS  
 L1 SCALE: 1"=10'-0"



2 ENLARGEMENT PLAN 2 – PERENNIALS, GRASSES AND GROUNDCOVERS  
 L1 SCALE: 1"=10'-0"

PLANTING SCHEDULE				
Qty.	Latin Name	Common Name	Size	Notes
<b>Shrubs</b>				
11	ARONIA ARBUTIFOLIA 'BRILLANTISSIMA'	BRILLANTISSIMA CHOKEBERRY	5 Gal.	Container
3	CORNUS RACEMOSA	GRAY DOGWOOD	10 Gal.	Container
28	CORNUS SERICEA 'ARCTIC FIRE'	RED OSIER DOGWOOD	5 Gal.	Container
24	DIERVILLA 'KODIAK ORANGE'	KODIAK ORANGE DIERVILLA	3 Gal.	Container
6	HAMAMELIS VIRGINIANA	AMERICAN WITCHHAZEL	4/5' Ht.	B&B
34	ILEX GLABRA 'COMPACTA'	COMPACT INKBERRY HOLLY	5 Gal.	Container
29	MYRICA PENNSYLVANICA	NORTHERN BAYBERRY	5 Gal.	Container
<b>Perennials, Grasses, Groundcovers</b>				
191	AMSONIA TABERNAEMONTANA 'BLUE ICE'	BLUE STAR FLOWER	1 Gal.	Container
32	ANDROPOGON GERARDII	BIG BLUESTEM	2 Gal.	Container
260	ASCLEPIAS TUBEROSA	BUTTERFLY WEED	1 Gal.	Container
11	ASTER NOVAE-ANGLIAE 'PURPLE DOME'	PURPLE DOME NEW ENGLAND ASTER	1 Gal.	Container
601	CAREX PENNSYLVANICA	OAK SEDGE	1 quart	Container
38	COREOPSIS LANCEOLATA 'MOONBEAM'	MOONBEAM COREOPSIS	1 Gal.	Container
252	DESCHAMPsia FLEXUOSA	CRINKLED HAIR GRASS	1 Gal.	Container
461	GAULTHERIA PROCUMBENS	WINTERGREEN	4" Pot	Container
394	IRIS VERSICOLOR	HARLEQUIN BLUEFLAG	1 Gal.	Container
315	LIATRIS ASPERA	ROUGH BLAZING STAR	1 Gal.	Container
21	LOBELIA CARDINALIS	CARDINAL FLOWER	1 Gal.	Container
53	MOLINIA CAERULEA 'VARIEGATA'	VARIEGATED MOOR GRASS	2 Gal.	Container
78	MONARDA FISTULOSA 'PETER'S PURPLE'	PETER'S PURPLE BEE BALM	1 Gal.	Container
51	OENOTHERA FRUTICOSA	EVENING PRIMROSE	1 Gal.	Container
184	PANICUM VIRGATUM 'SHENANDOAH'	SHENANDOAH SWITCH GRASS	2 Gal.	Container
591	RUDBECKIA 'AMERICAN GOLD RUSH'	BLACK-EYED SUSAN	1 Gal.	Container
398	SCHIZACHYRIUM SCOPARIUM	LITTLE BLUESTEM	2 Gal.	Container
29	SOLIDAGO SPECIOSA	SHOWY GOLDENROD	1 Gal.	Container
730	WALDSTEINIA FRAGARIOIDES	BARREN STRAWBERRY	1 quart	Container

NOTE: CRUSHED STONE TO BE 3/4" WASHED STONE, 6" DEPTH

NEWTON FREE LIBRARY PARKING LOT

Newton, MA

Owner

City of Newton

Landscape Architect



Radner Design Associates, Inc.

3 Allied Drive, Suite 303  
 Dedham, MA 02026  
 508.736.6144  
 www.RadnerDesign.com



2 ADDENDUM NO. 5 - DATED 3/02/22

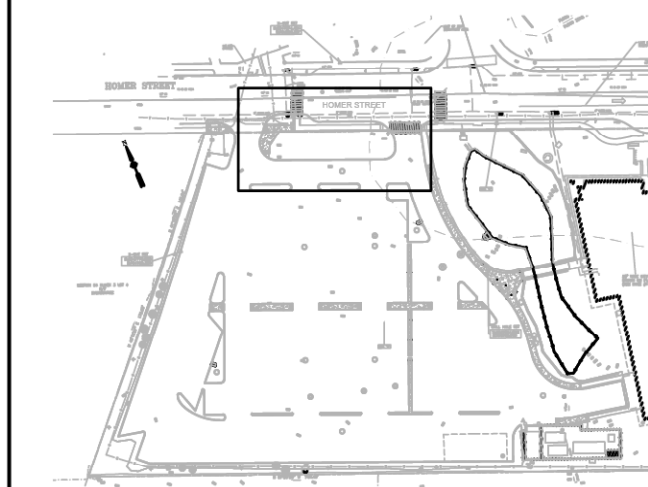
1 ADDENDUM NO. 3 - DATED 2/23/22

Revision:

Drawn: kc

Checked: mr

Scale: 1"=10'-0"



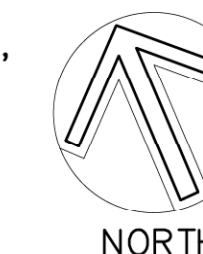
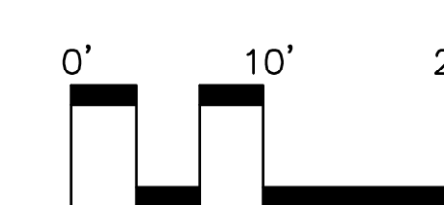
Sheet Name:  
 Enlargement Plan 1

Project No.:  
 21-10

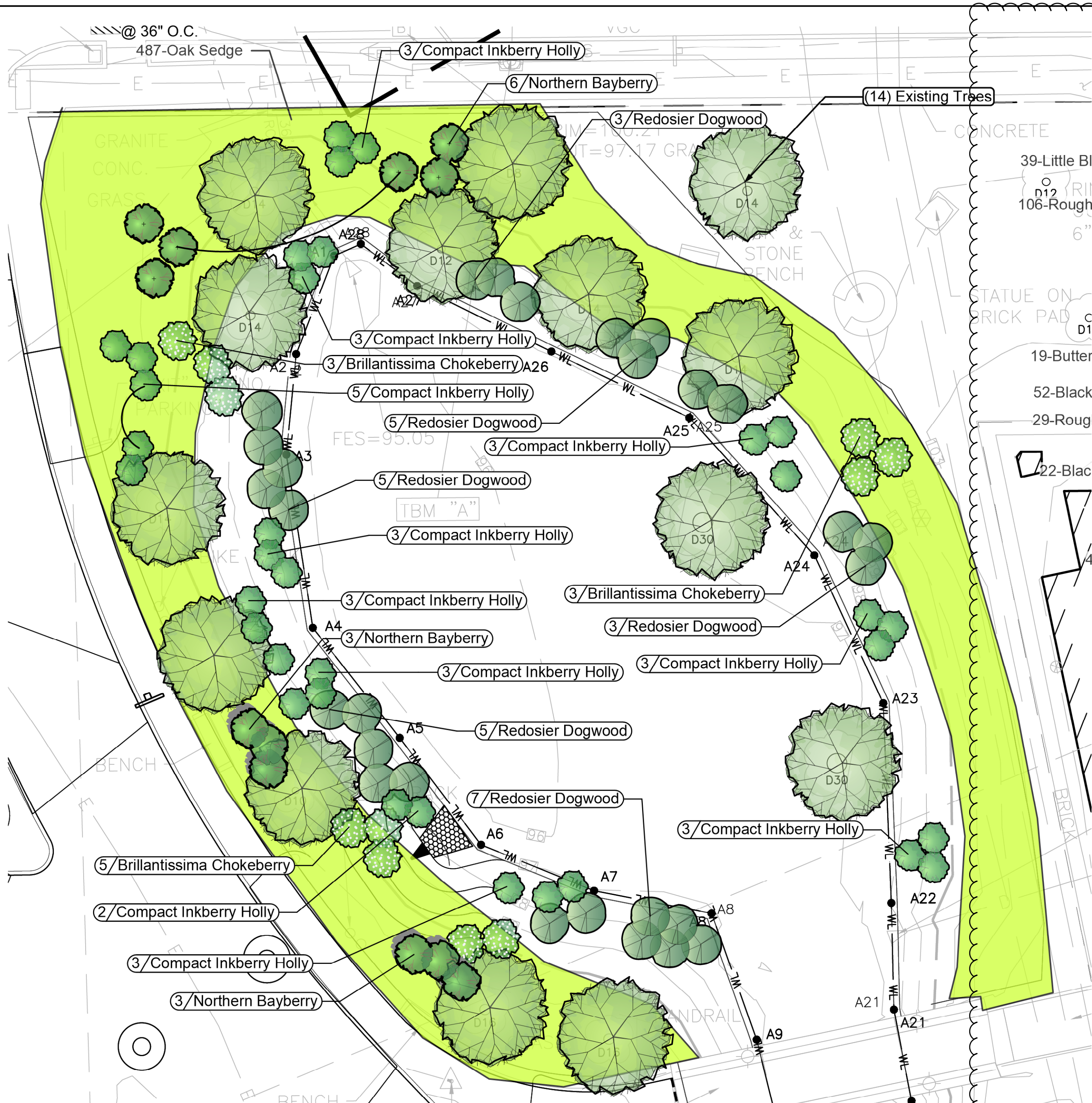
Issue Date:  
 01/28/2022

Sheet No.:

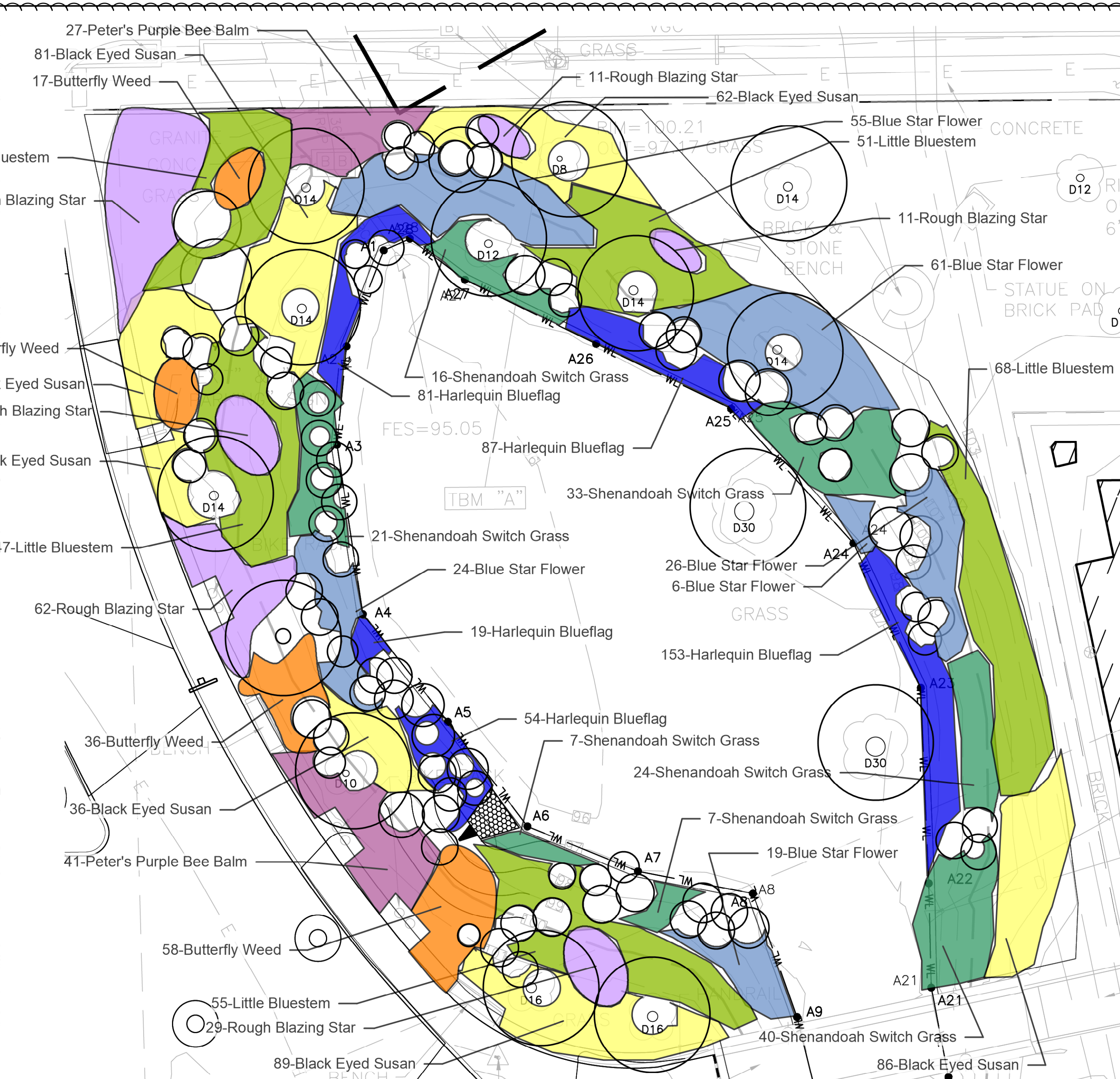
L1



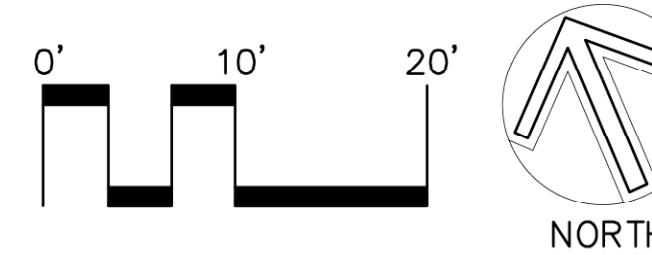




1 ENLARGEMENT PLAN 4 – EXISTING TREES, PROPOSED SHRUBS + GROUNDCOVERS  
 L3 SCALE: 1"=10'-0"



2 ENLARGEMENT PLAN 4 – PERENNIALS  
 L3 SCALE: 1"=10'-0"

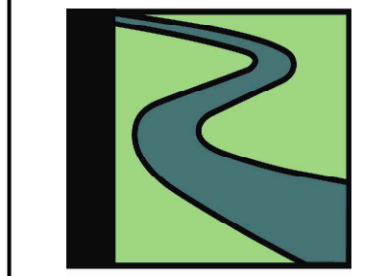


**NEWTON FREE LIBRARY PARKING LOT**

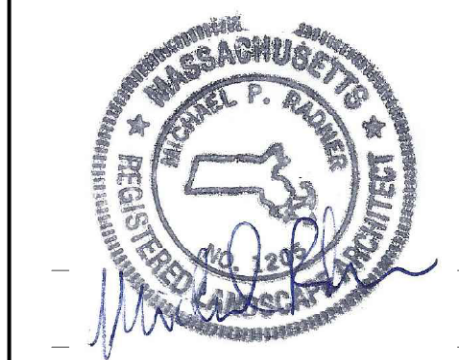
Newton, MA

Owner  
**City of Newton**

Landscape Architect



**Radner Design Associates, Inc.**  
 3 Allied Drive, Suite 303  
 Dedham, MA 02026  
 508.736.6144  
[www.RadnerDesign.com](http://www.RadnerDesign.com)

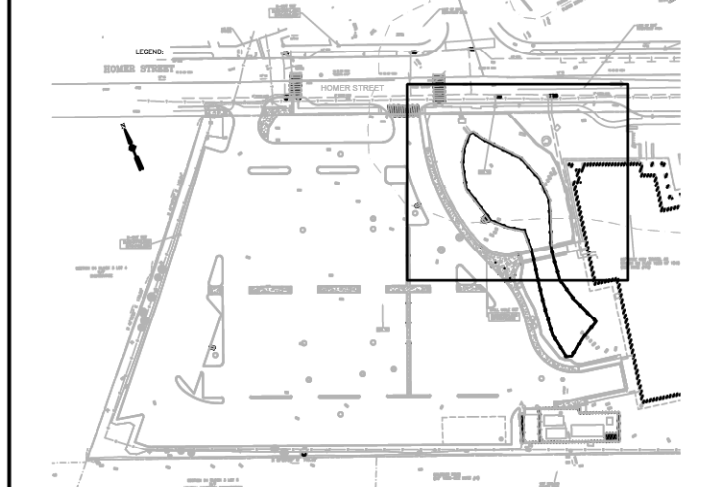


ADDENDUM NO. 5 - DATED 3/02/22  
 ADDENDUM NO. 3 - DATED 2/23/22  
 Revision:

Drawn: kc

Checked: mr

Scale: 1"=10'-0"



Sheet Name:  
**Enlargement Plan 4**

Project No.:  
 21-10

Issue Date:  
 01/28/2022

Sheet No.:

**L3**