



NEWTON
Parks, Recreation & Culture

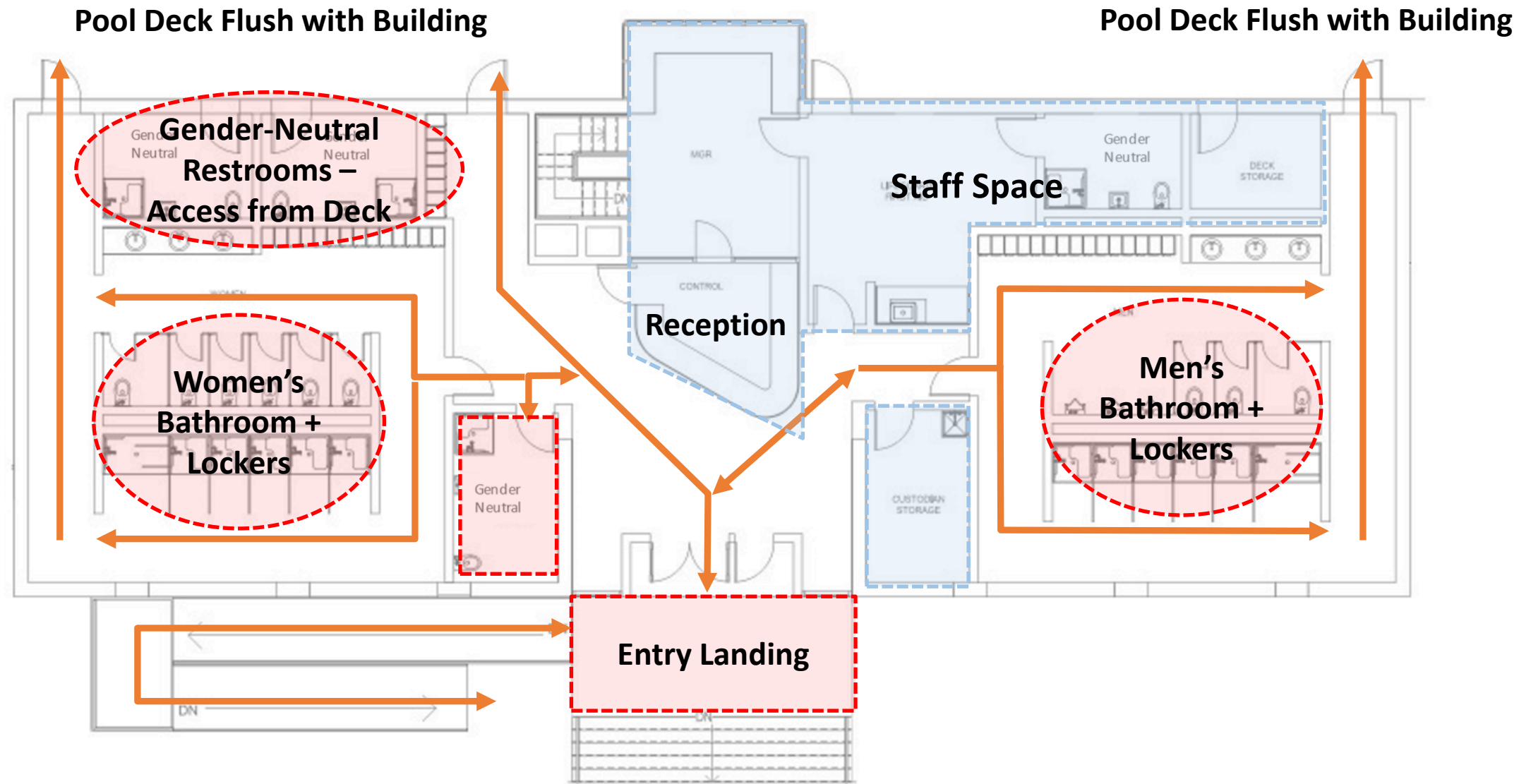
GATH POOL PROJECT

City of Newton
Commission on Disability
March 14th, 2022

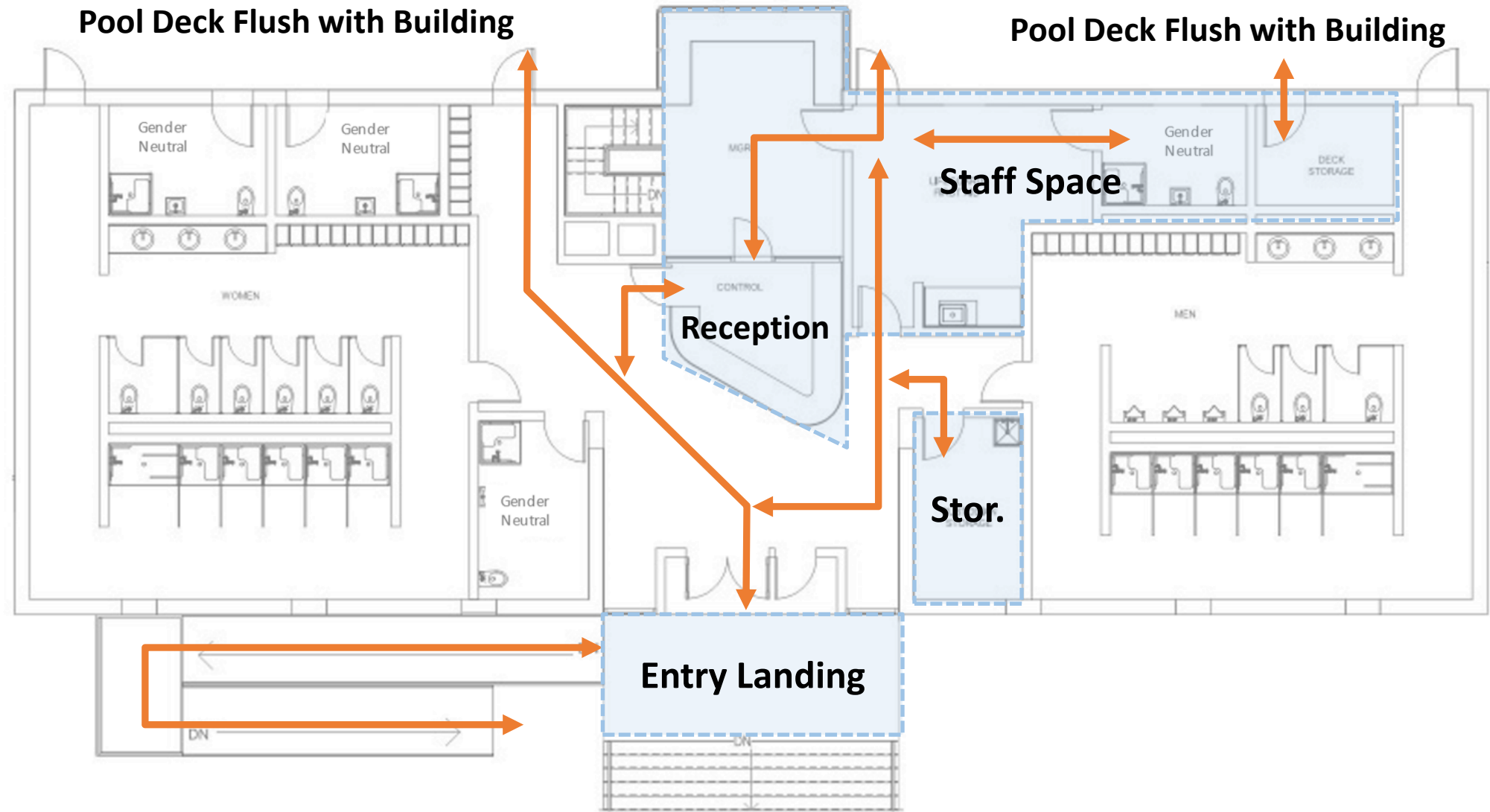
REVISTING GOALS AND OBJECTIVES

- Maintain and Activate More Green Space Around the Pool
- Improve Entry and Arrival Sequence
- Improve Experience for User Groups, Including Recreational and Competitive Swim
- Universal Access To Facility and All Pools
- Provide Leisure and Play Areas for Pool Patrons
- Create Flexible Pool Spaces For Different User Groups to Use the Pool at the Same Time
- Improve Operating Productivity by Eliminating Water Loss and Increasing Energy Efficiency
- Evaluate Bathhouse to Improve Overall Guest Experience
- Address Code, Accessibility, and Interior Upgrades
- Provide Improved Opportunities for Shade Structures and Sunbathing Areas

BATHHOUSE IMPROVEMENTS - GUEST PROGRAM AND CIRCULATION



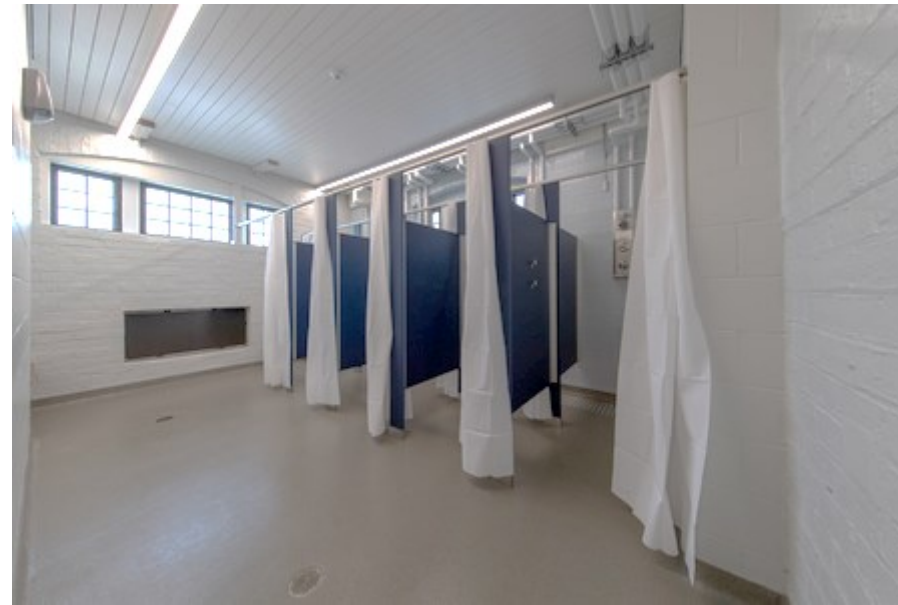
BATHHOUSE IMPROVEMENTS - STAFF PROGRAM AND CIRCULATION



BATHHOUSE



Public Use Lockers



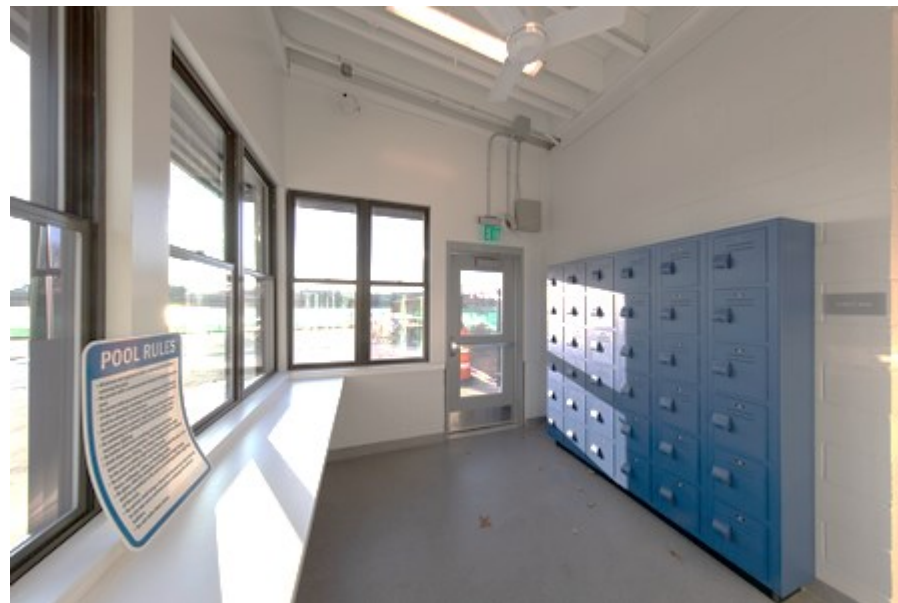
Shower/Changing Stalls



Changing Tables



Daylighting/Durable Finishes



Efficient Staff, Lifeguard and First Aid Space



Waterproof Wheelchair

POOL



Zero Entry



Accessible Ramp into Pool

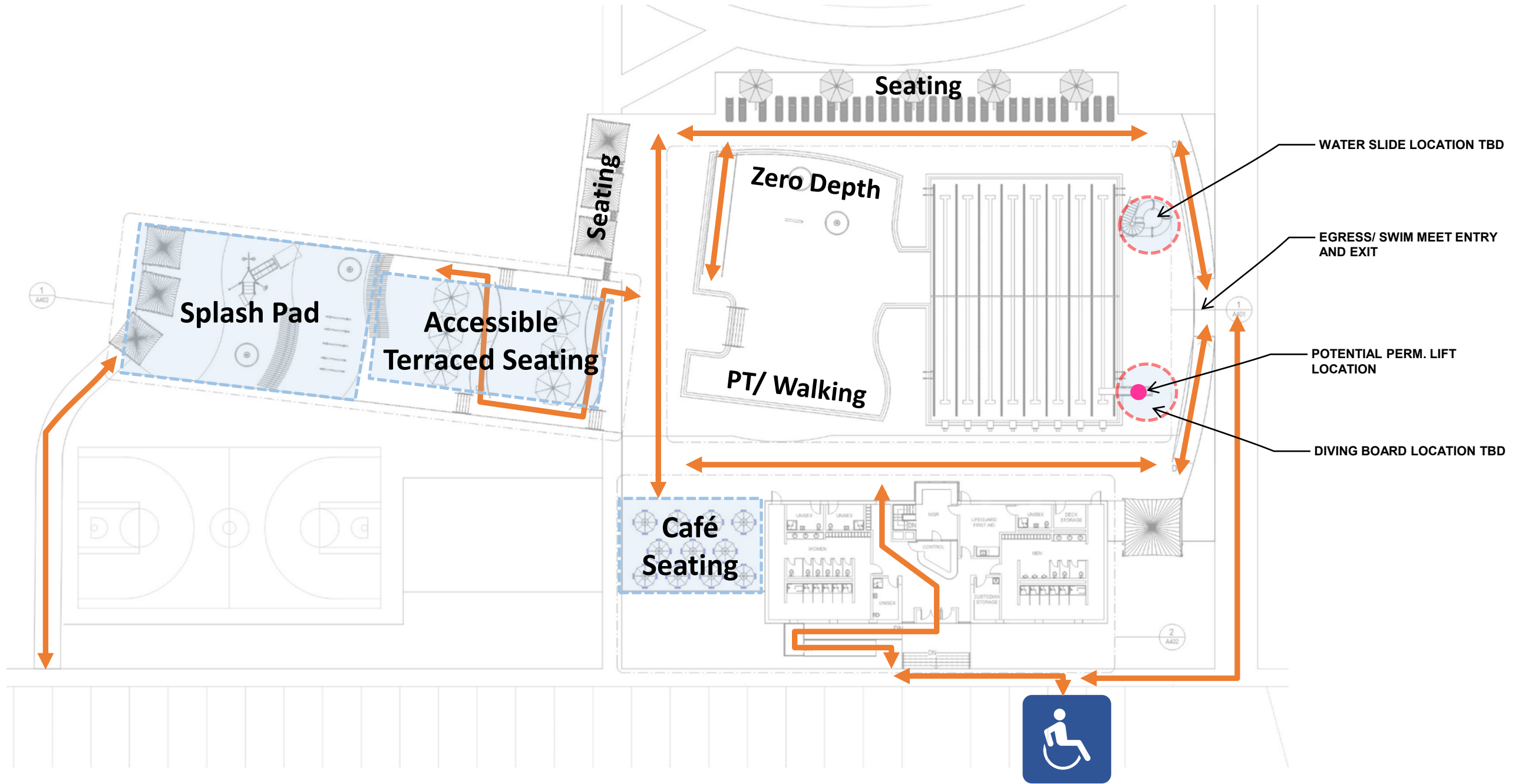


Permanent Pool Lift

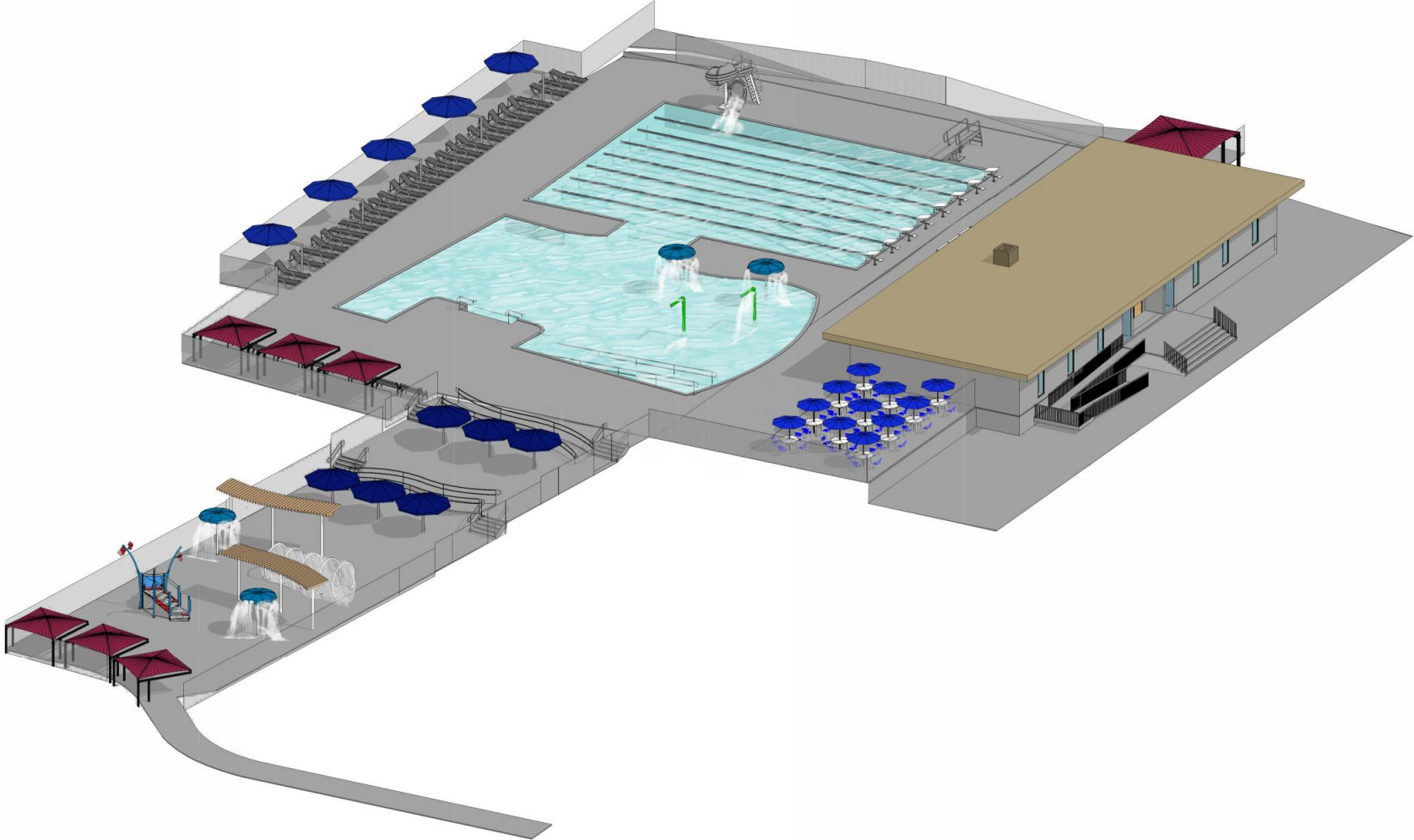
BATHHOUSE AND POOL FOCUS GROUP FEEDBACK

- Restrooms:
 - Grab bars need to be clearly and carefully laid out
 - Doors on shower stalls – No curtains
- Wheelchair:
 - Available for use from changing room to pool
 - Rolls and maneuvers easily
 - Safety belt
 - Can get wet
- Changing room:
 - Adjustable bench/table
 - Pool-ready wheelchair available for use
- Pool Lift:
 - Ready for independent use
 - Ease of use by single person
 - Proper staff training
 - Readily available equipment w/o locks or other barriers (batteries and other ancillary equipment)
- Storage:
 - For pool wheelchairs on site
 - For guest personal chairs and other equipment
- Splash pad:
 - Waterproof chair for use in the splash pad (Electric/Non-electric)
 - Direct ramps that lead directly to the splash pad – no turns
- Water Slide:
 - Provide options for people with disabilities
 - Place on Community Pool side
- Connected/separate pools:
 - Prefer multiple means of accessible entry for all swim areas. Makes connector advantageous (1 lift, 1 ramp) with easier transfer between pools

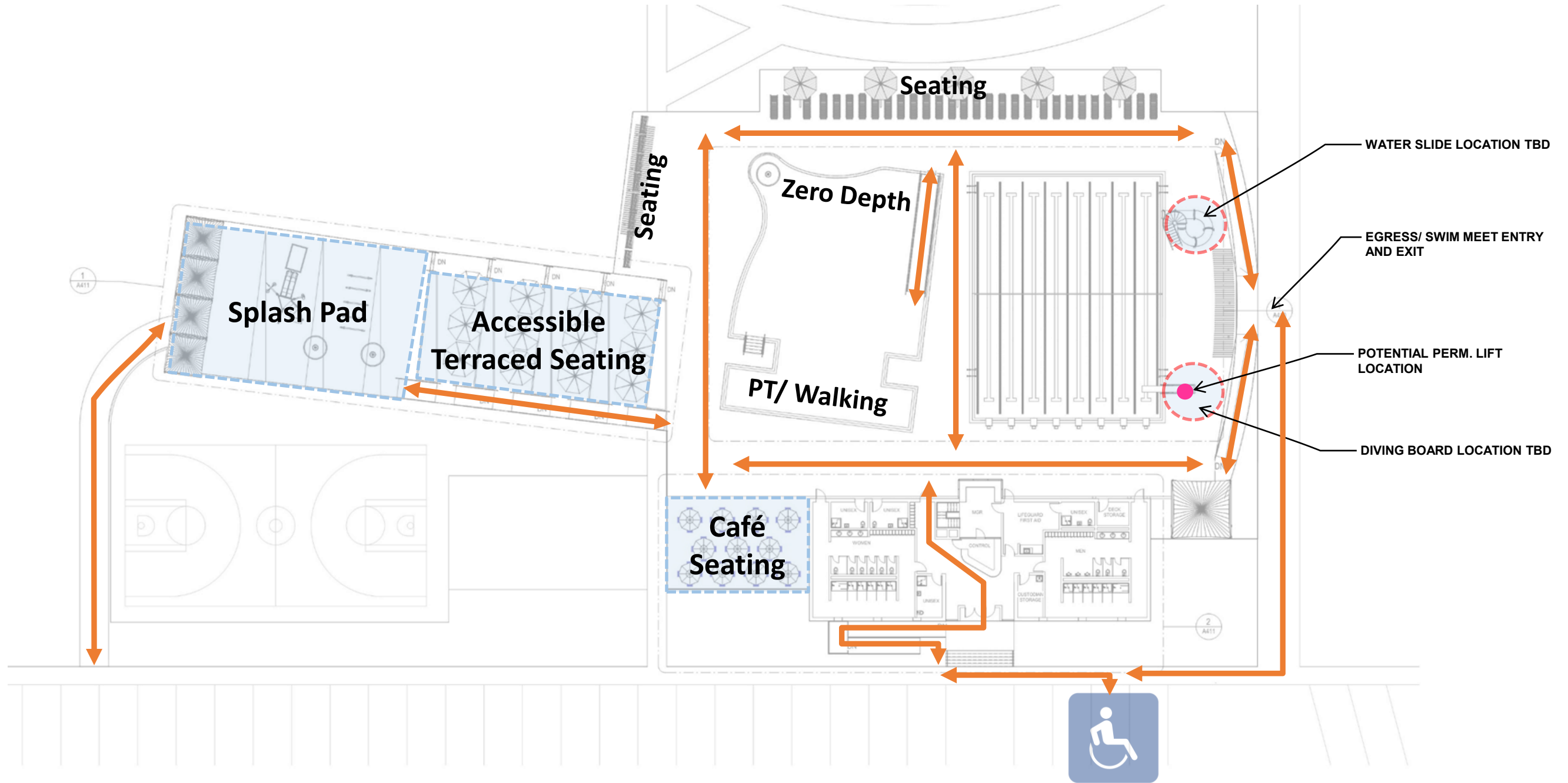
OPTION 1 – PROGRAM + CIRCULATION



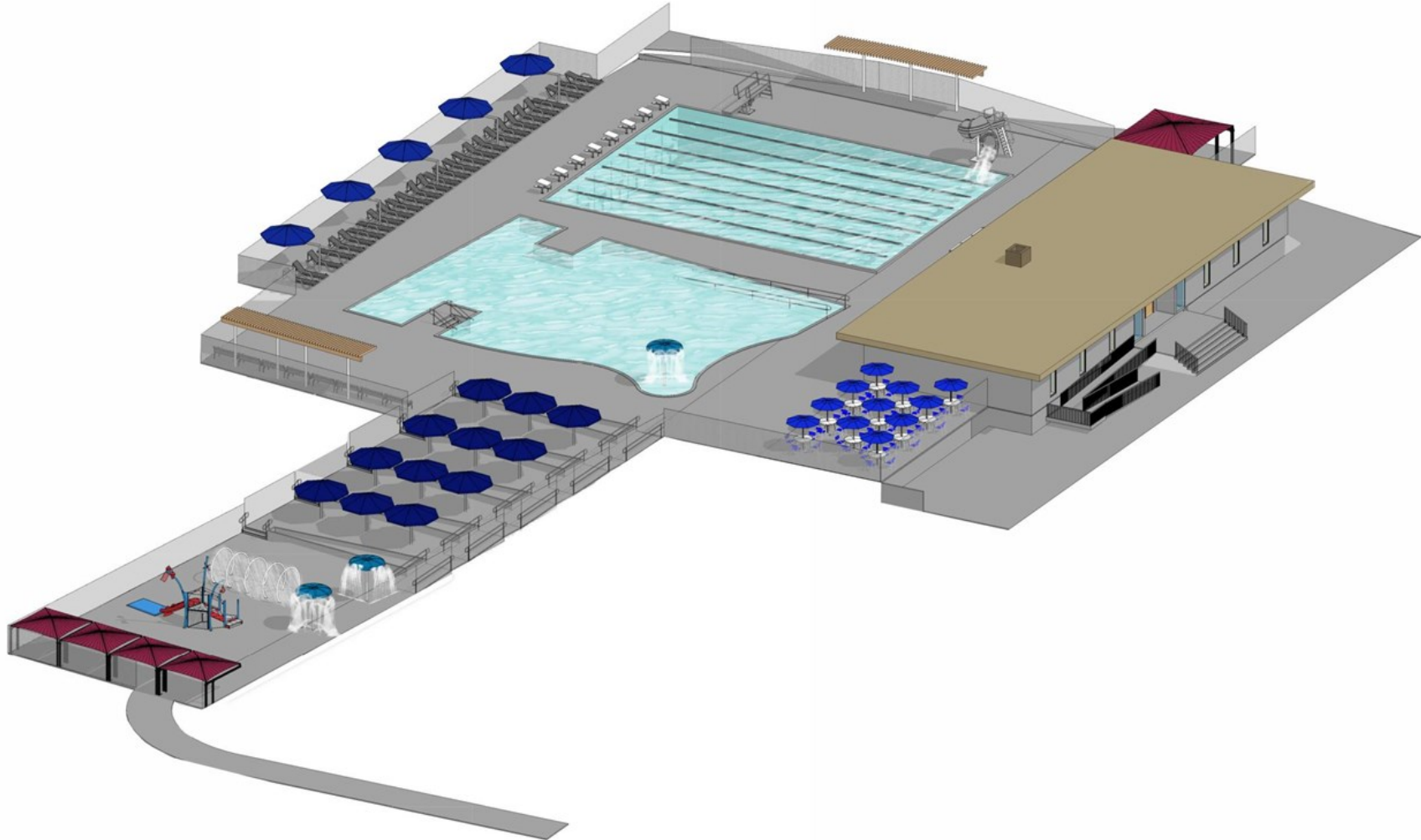
OPTION 1 – COMBINED POOLS: ZERO DEPTH ON BUILDING SIDE



OPTION 2 – PROGRAM + CIRCULATION



OPTION 2 - ZERO DEPTH ON BUILDING SIDE



EXISTING & PROPOSED CONDITION OVERLAY

