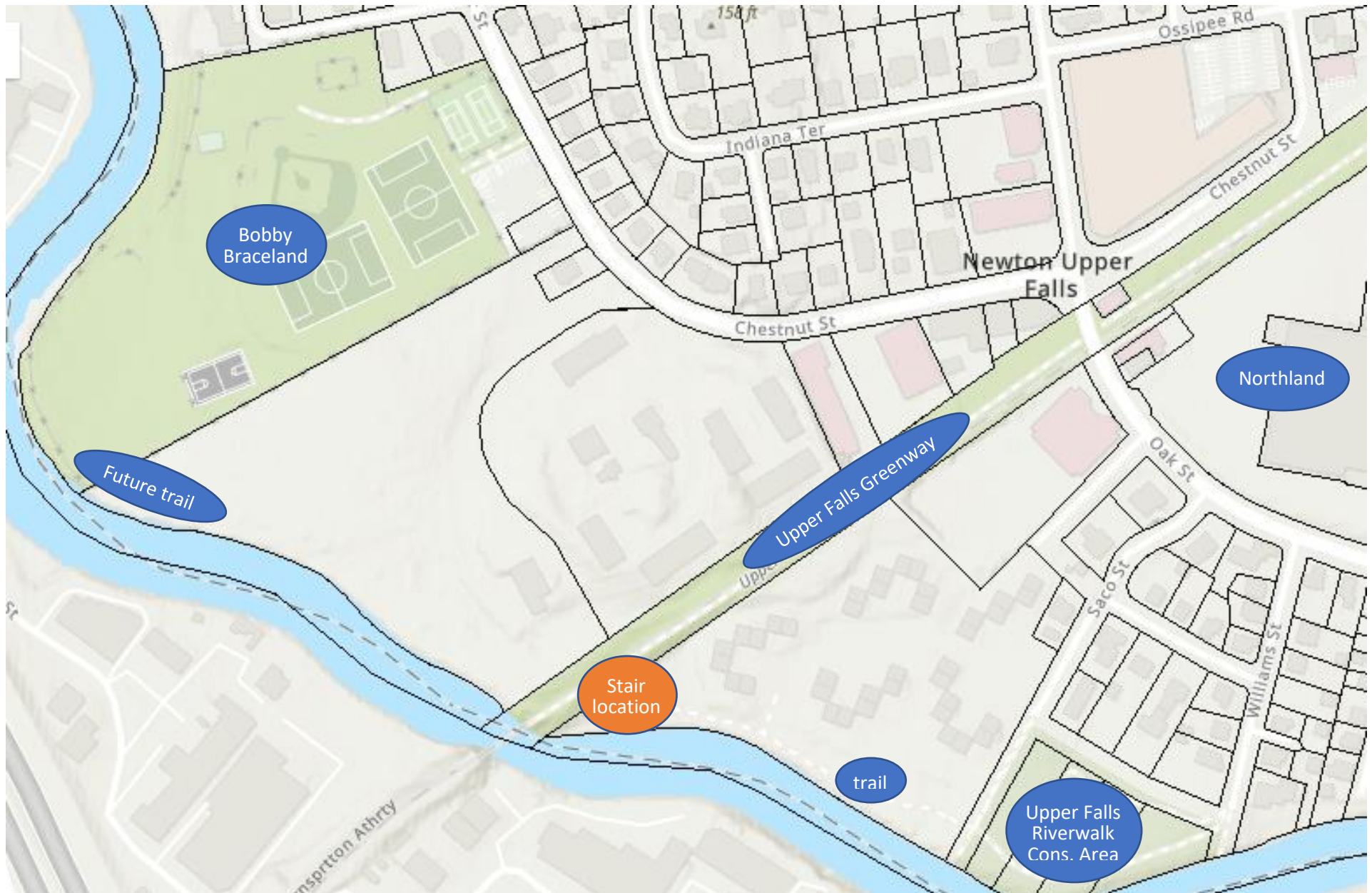
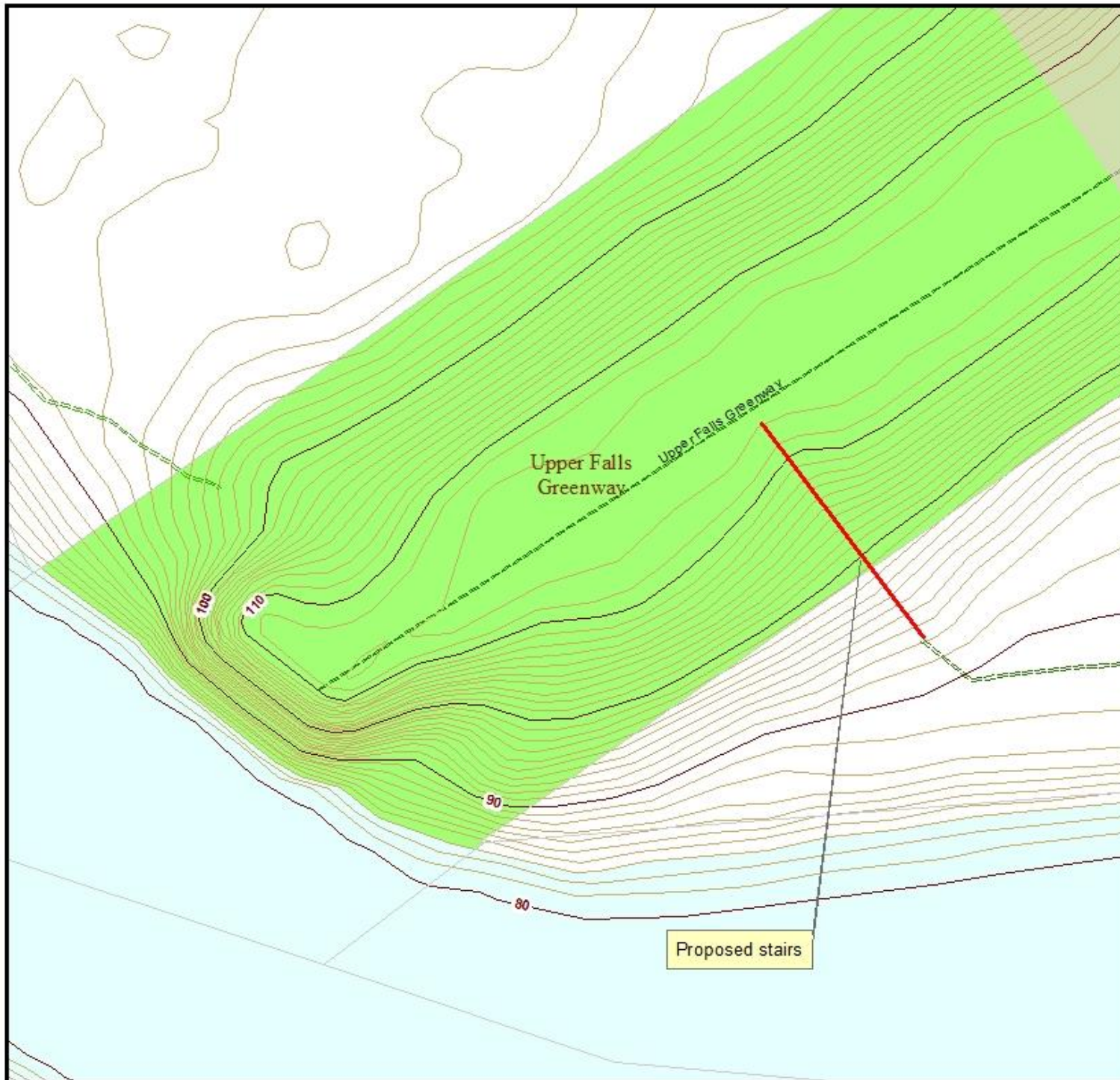


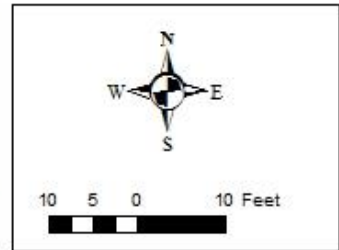
Upper Falls Greenway – Upper Falls Riverwalk Connector Stairs – Project Proposal 3/2/2022





**Proposed Stairs to
Upper Falls Greenway
(zoomed in)
Newton, Mass.**

Map Date: 02-06-2020



The information on this map is from the Newton Geographic Information System (GIS). The City of Newton cannot guarantee the accuracy of this information. Each user of this map is responsible for determining its suitability for his or her intended purpose. City departments will not necessarily approve applications based solely on GIS data.



CITY OF NEWTON, MASSACHUSETTS
Mayor - Ruthanne Fuller
GIS Administrator - Douglas Greenfield

The view from the top



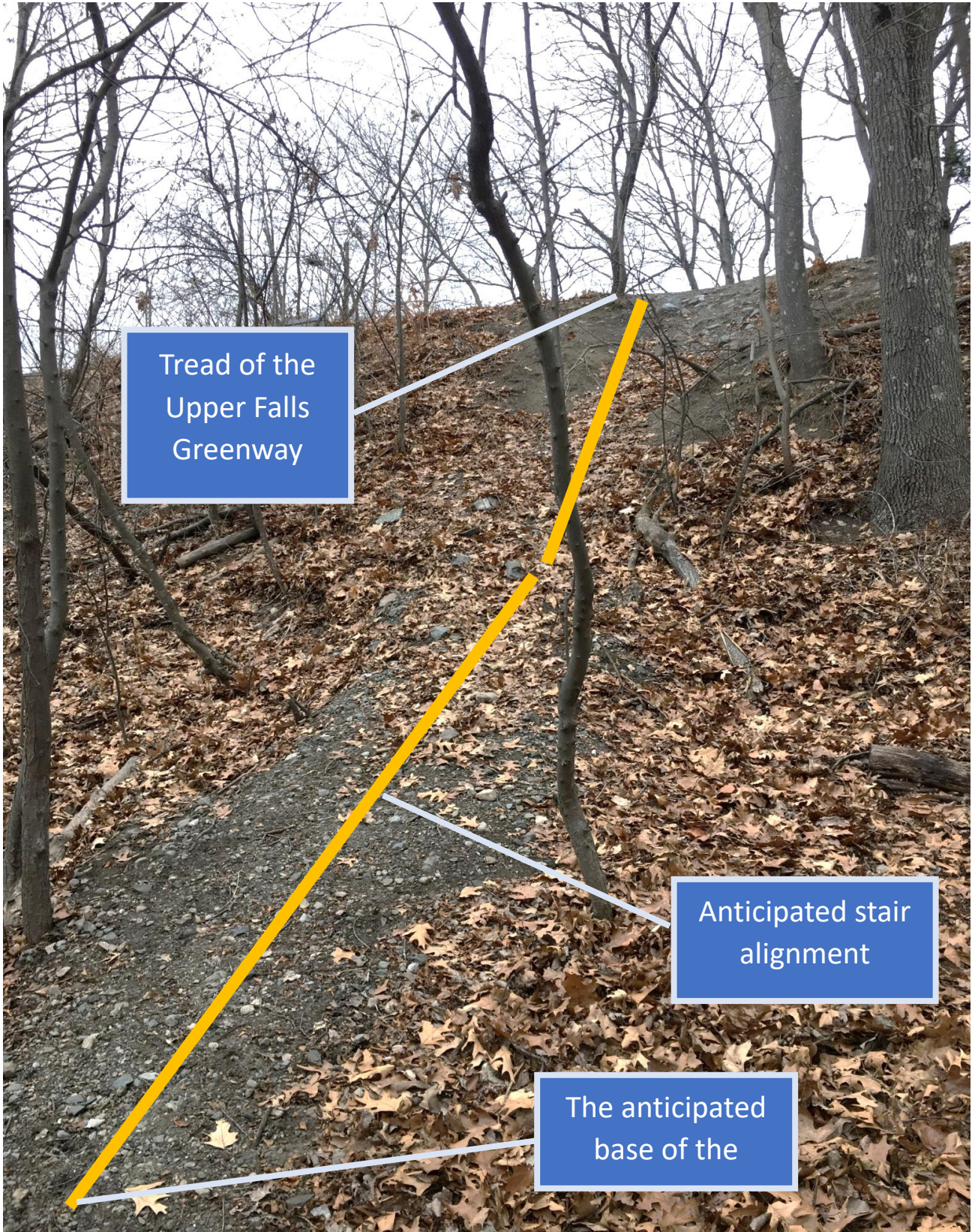
To of stair leading
down to
Riverwalk Pathway

Southwestern
terminus of Upper
Falls Greenway

The view from the top



The view from the bottom

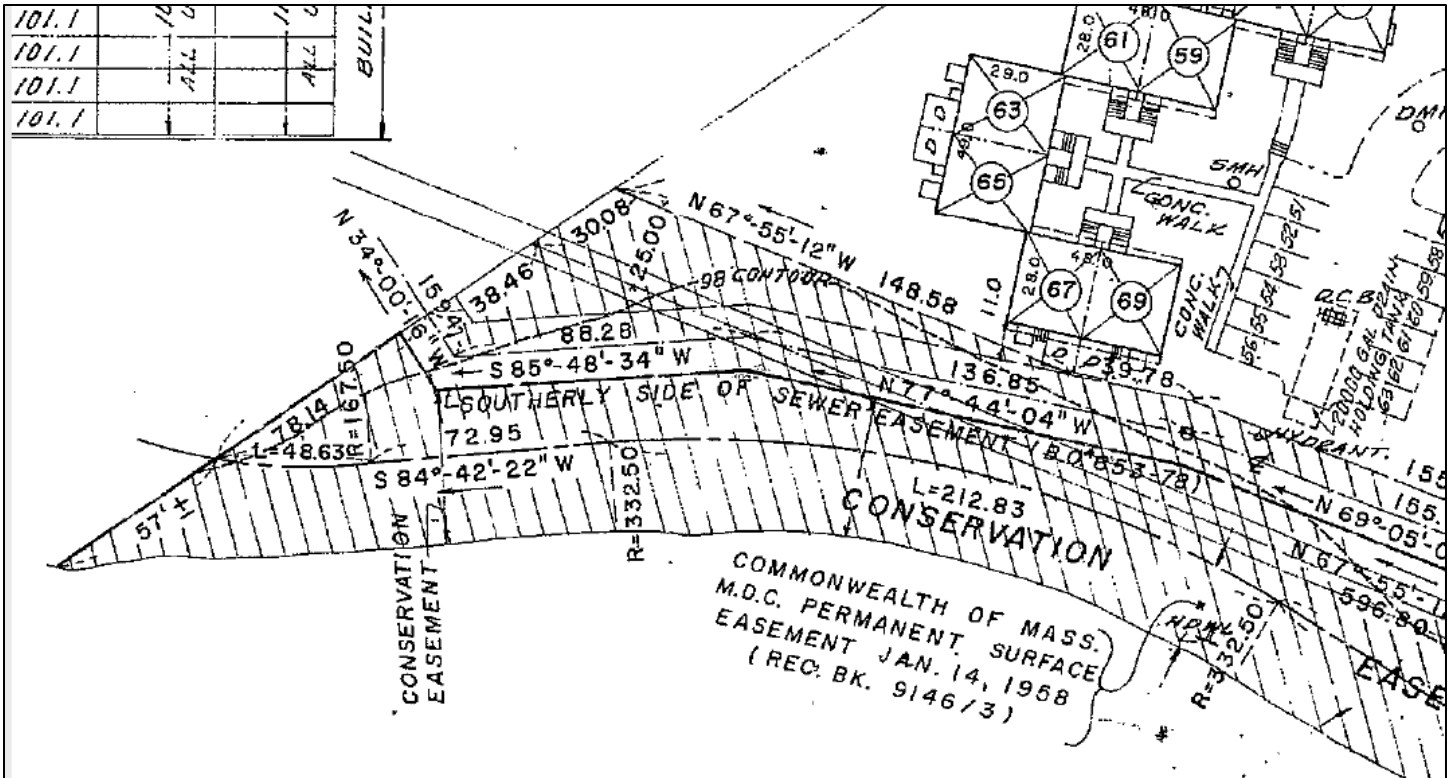


Tread of the
Upper Falls
Greenway

Anticipated stair
alignment

The anticipated
base of the

Conservation Easement plan



MAAB Variance

CHARLES D. BAKER
GOVERNOR

EDWARD A. PALLESCHI
UNDERSECRETARY OF CONSUMER
AFFAIRS AND BUSINESS REGULATION

KARYN E. POLITO
LIEUTENANT GOVERNOR

Commonwealth of Massachusetts
Division of Professional Licensure
Office of Public Safety and Inspections
Architectural Access Board

LAYLA R. D'EMILIA
COMMISSIONER, DIVISION OF
PROFESSIONAL LICENSURE

1000 Washington St., Suite 710 Boston MA 02118
V: 617-727-0660 www.mass.gov/aab Fax: 617-979-5459

Docket Number V 20 145

NOTICE OF ACTION

RE: Charles River Pathway, Upper Falls Greenway

1. A request for a variance was filed with the Board by Claire Rundell

(Applicant) on
06 Newton, MA 02459

The applicant has requested variances from the following sections of the 06 Rules and Regulations of the Board:

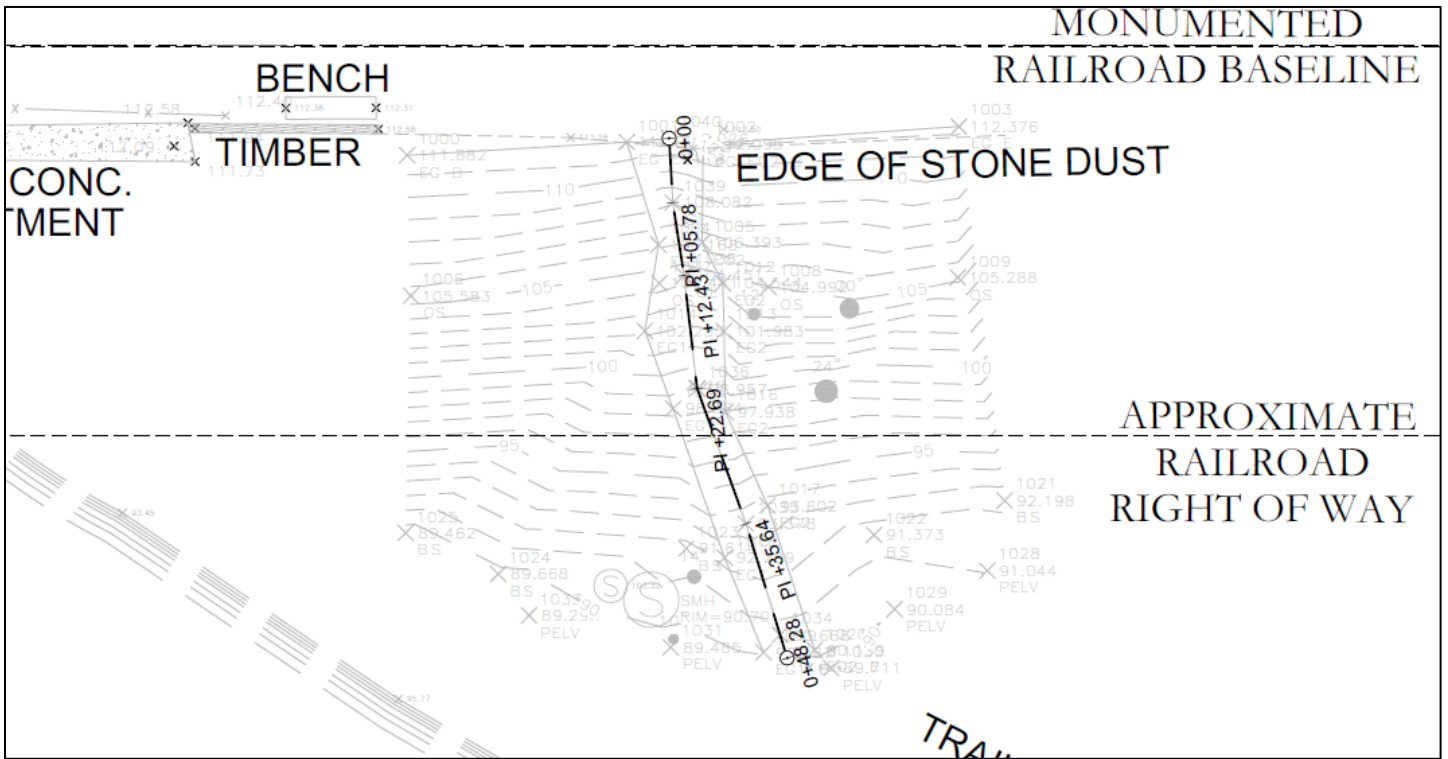
<u>Section:</u>	<u>Description:</u>
20.1	Accessible Route

2. The application was heard by the Board as an incoming case on Monday, September 14, 2020

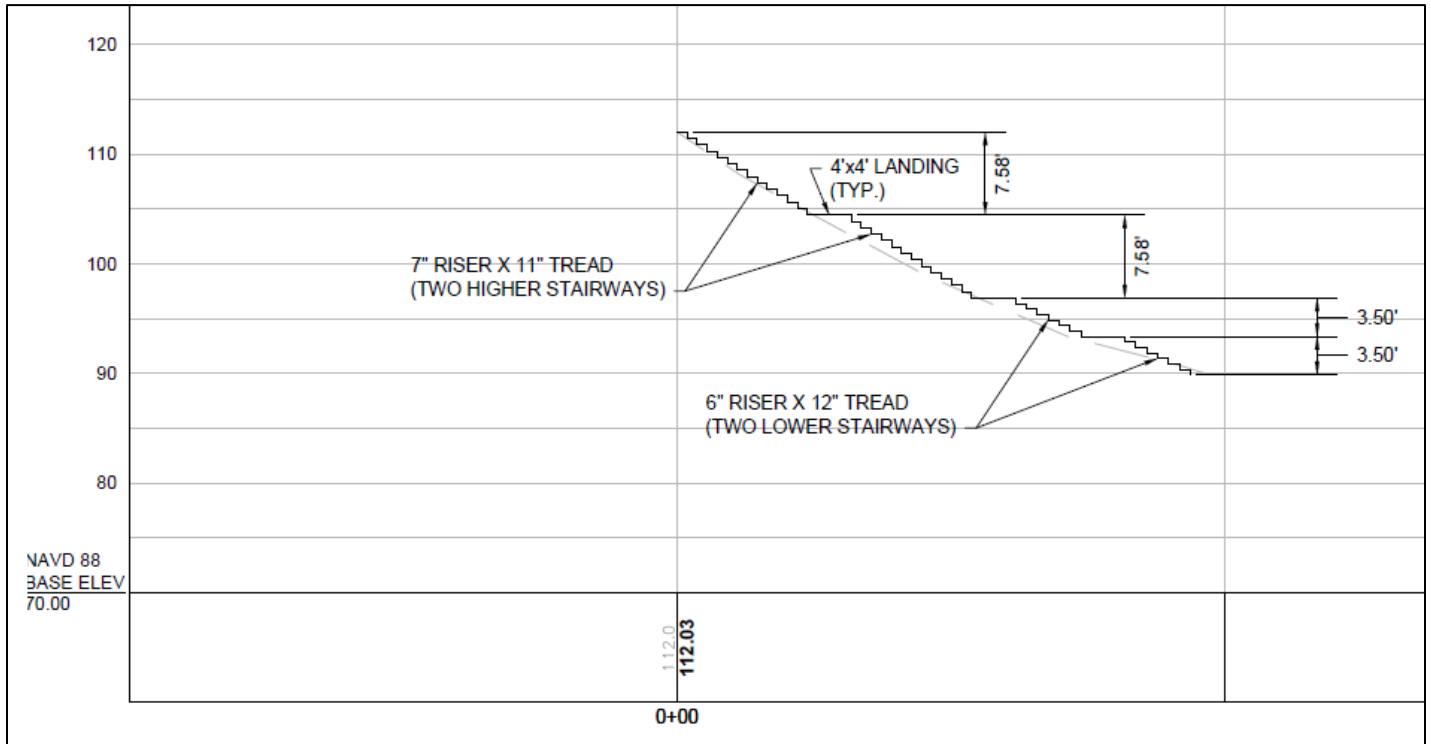
3. After reviewing all materials submitted to the Board, the Board voted as follows:

GRANT relief to 20.1 as proposed on the condition that wayfinding signage is provided, information is included on other material related to the trails, and the stairs fully comply with 521 CMR 27.

Engineering's base plan



Engineering's stair concept plan



Subsurface Investigation and Design Services Estimate from BETA, the City's on-call engineer

Task	BETA Estimated Fee
Task 1 – Subsurface Investigation	\$1,400
Task 2 – Design	\$13,200
Subtotal:	\$14,600
Drilling Subcontractor	\$4,200
Mileage and Misc. Expenses	\$100
Total:	\$18,900

Task 1. Subsurface Investigation. Prepare a boring plan for the subsurface investigation for the purpose of determining recommendations for geotechnical parameters for the design of the foundations for the stairs. Visit the site to stake the boring location. Retaining the services of a qualified drilling contractor to perform one drive sample boring. The boring will be taken from the surface of the greenway at the top of the proposed stair location. The boring will be drilled to a depth of 35 feet or refusal, whichever is shallower. Prepare a boring log (by driller) depicting the results of the boring operation. It is anticipated that the boring operation will take one day. Observation of the boring operations by an engineer is not included.

Task 2. Design. Coordinate with the City on the alignment of the stairs. Develop plan and elevation details depicting the horizontal and vertical geometry. Develop a typical cross section through the stairs with estimated member sizes. Estimate loads at the proposed foundation locations and design concrete foundations to support the anticipated loads. Develop details depicting the proposed foundations. Prepare a construction plan and technical specifications suitable for public bidding. Prepare an estimate of probable construction costs. Submit 100% Construction Plans, Special Provisions, and Estimate to the City for review. Respond to comments, make appropriate revisions, and resubmit (if necessary). Level of effort is based on minor revisions only.

Exclusions. The following services are not included; if required, they will be provided as an additional service: • Hazardous material sampling/testing • Topographic field survey • Utility investigation or coordination • Final design of the stairway steel elements and connections • Environmental resource delineation • Environmental permitting • Right-of-way services • Meetings • Bidding phase services • Construction phase services.