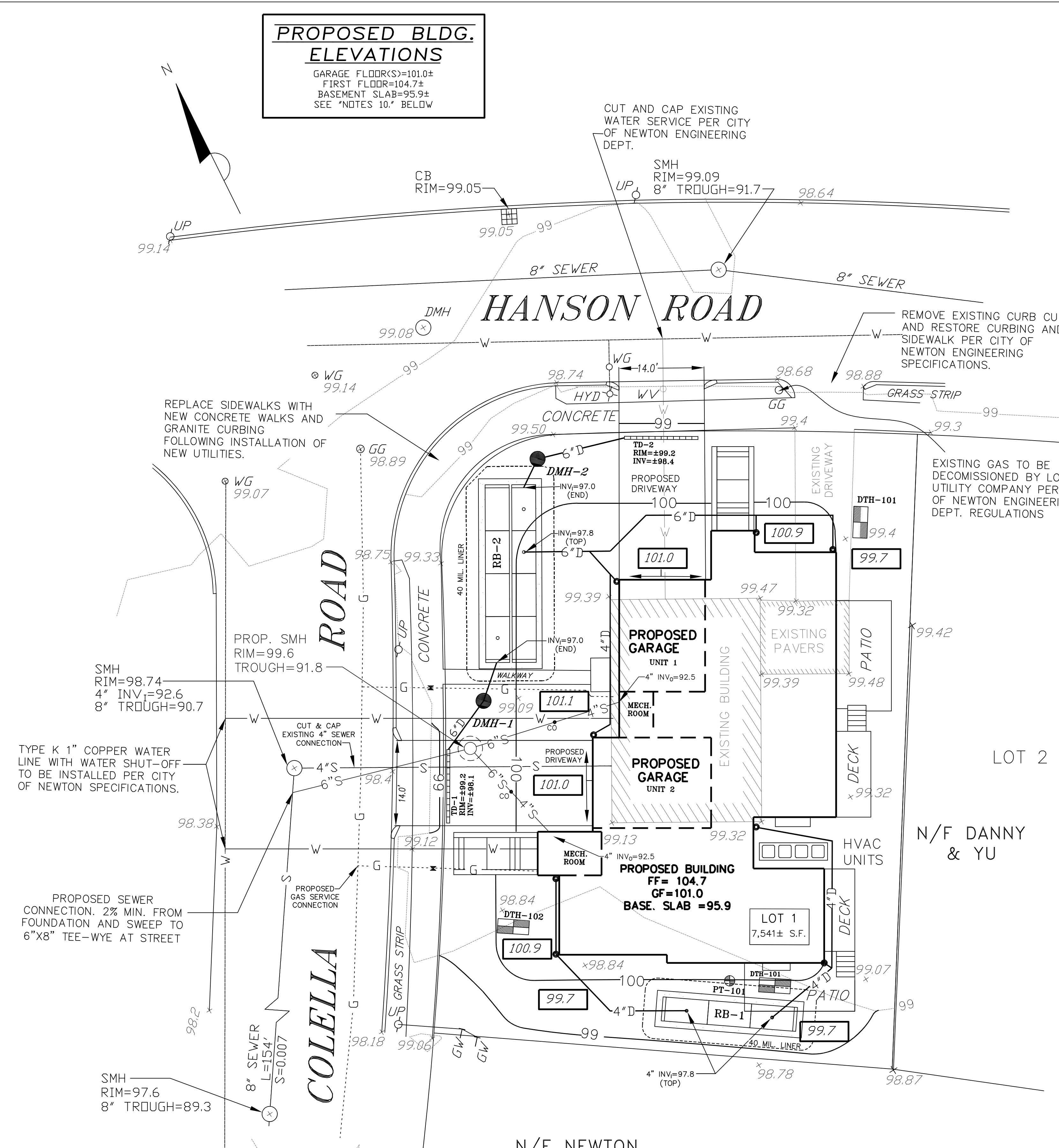


PROPOSED BLDG. ELEVATIONS
 GARAGE FLOOR(S)=101.0±
 FIRST FLOOR=104.7±
 BASEMENT SLAB=95.9±
 SEE "NOTES 10." BELOW



PERC TEST DATA

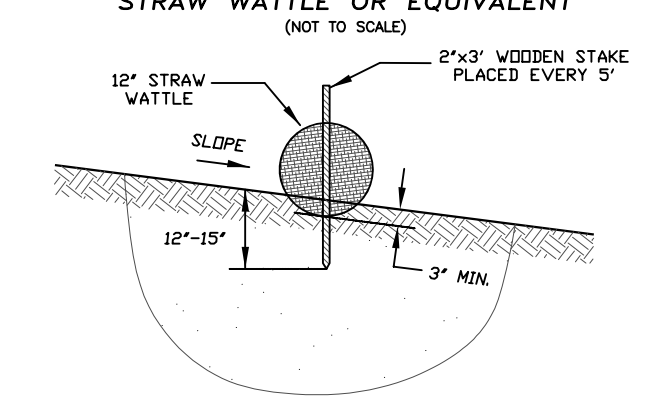
PT#101
 DATE OF TEST: 9/24/20
 DEPTH OF TEST: 1.8'-3.3'
 RATE: 7 MPI

DEEP TEST HOLE DATA

DTH#100 DATE: 9/24/20				DTH#101 DATE: 9/24/20				DTH#102 DATE: 9/24/20									
DEPTH FROM SURFACE	SOIL HORIZON	SOIL COLOR	DESCRIPTION	PARENT MATERIAL	TILL	DEPTH FROM SURFACE	SOIL HORIZON	SOIL COLOR	DESCRIPTION	PARENT MATERIAL	TILL	DEPTH FROM SURFACE	SOIL HORIZON	SOIL COLOR	DESCRIPTION	PARENT MATERIAL	TILL
0.0'-0.5'	A	10YR3/2	LDAM			0.0'-1.0'	A	10YR3/2	LDAM			0.0'-1.0'	A	10YR3/2	LDAM		
0.5'-1.8'	B	10YR5/8	SANDY LDAM		26.2'	1.0'-4.0'	B	10YR5/8	SANDY LDAM		28.0'	1.0'-4.0'	B	10YR5/8	SANDY LDAM		29.5'
1.8'-3.2'	C ₁	10 Y5/3	LDAMY SAND		4.0'	4.0'-5.0'	C ₁	2.5 Y6/4	LDAMY SAND		5.0'	4.0'-5.0'	C ₁	10 Y5/3	LDAMY SAND		5.0'
3.2'-4.5'	C ₂	2.5Y5/2	SANDY LDAM		N/A	5.0'-8.0'	C ₂	2.5Y5/2	SANDY LDAM		N/A	5.0'-9.0'	C ₂	2.5Y5/2	SANDY LDAM		N/A
4.5'-6.2'	C ₃	5Y5/1	SANDY LDAM		4'	8.0'-9.5'	C ₃	5Y5/1	SANDY LDAM		5'	9.0'-9.5'	C ₃	5Y5/1	SANDY LDAM		5'

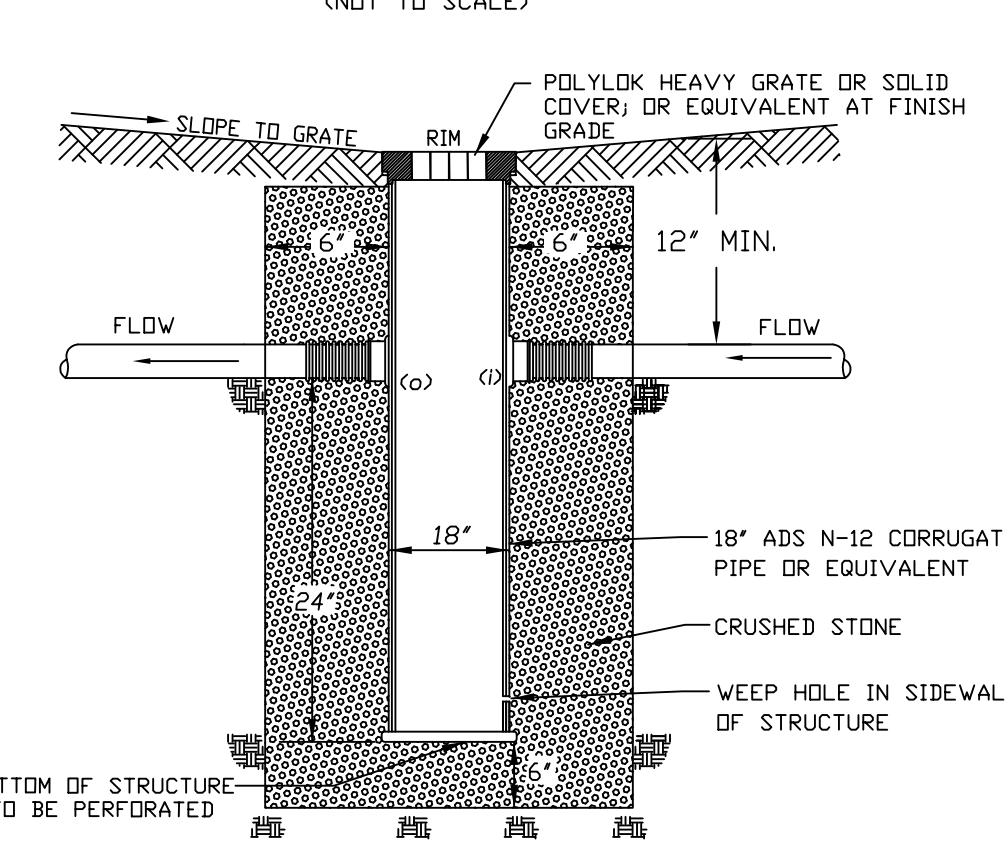
"I CERTIFY THAT I AM CURRENTLY APPROVED BY THE DEPARTMENT OF ENVIRONMENTAL PROTECTION PURSUANT TO 310 CMR 15.017 TO CONDUCT SOIL EVALUATIONS AND THAT THE ABOVE ANALYSIS HAS BEEN PERFORMED BY ME IN CONVIANT WITH THE REQUIRED TRAINING, EXPERTISE, AND EXPERIENCE DESCRIBED IN 310 CMR 15.017. I FURTHER CERTIFY THAT THE RESULTS OF MY SOIL EVALUATION, ARE ACCURATE AND IN ACCORDANCE WITH 310 CMR 15.100 THROUGH 15.107."
 - KEVIN E. O'LEARY, PE

EROSION CONTROL BARRIER



- STRAW WATTLE NOTES**
- THIS EROSION CONTROL BARRIER SHALL BE PLACED AROUND THE PROPERTY PERIMETER OR OTHERWISE, AS DIRECTED, BY THE CITY, AND ALSO ENCLOSE MATERIAL STOCKPILES.
 - THE EROSION CONTROL BARRIER MEASURES SHALL BE PROPERLY MAINTAINED THROUGHOUT CONSTRUCTION AND REMAIN IN PLACE UNTIL ALL NEWLY GRADED AND DISTURBED AREAS ARE STABILIZED WITH VEGETATION.
 - A SMALL AMOUNT OF THIS BARRIER SHALL BE STOCKPILED ON-SITE FOR EMERGENCY USE.
 - SILT SACKS SHALL BE INSTALLED IN CATCH BASINS DOWN GRADIENT FROM THE CONSTRUCTION AREA FOR THE DURATION OF CONSTRUCTION.

18" DMH1&2

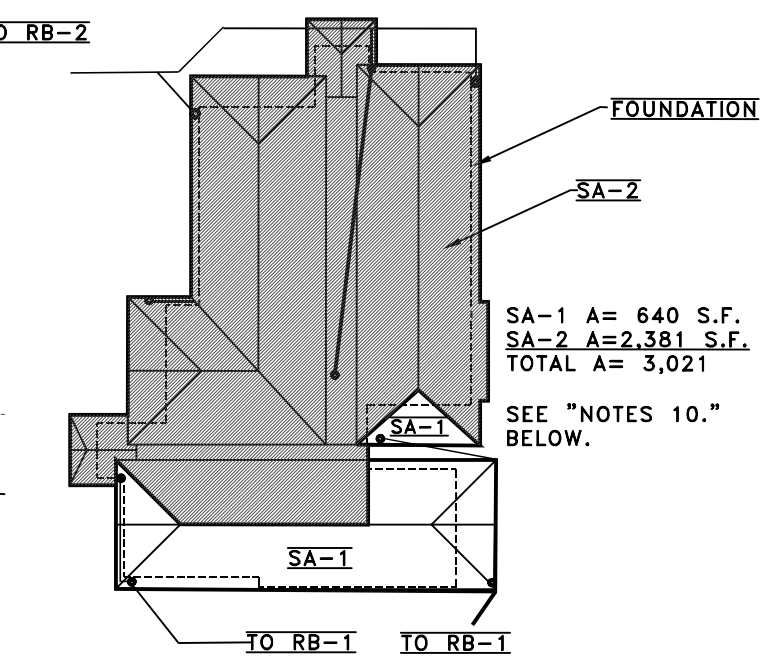


SCHEDULE OF ELEVATIONS

DESCRIPTION	DMH-1	DMH-2
RIM (TO GRADE)	101± (COVER)	100.9± (COVER)
6" INVERT IN (D)	98.0±	98.1
4" INVERT IN (D)	N/A	N/A
6" INVERT OUT (C)	97.9±	98.0
SUMP	95.9±	96.2±

NOTES

- USE 18" ADS N-12 CORRUGATED PIPE MANUFACTURED BY ADS OF HILLIARD, OH OR EQUIVALENT.
- WIRE MESH GUARDS, OR EQUIVALENT, SHALL BE INSTALLED ON THE OUTLETS FOR EACH DMH TO PREVENT DEBRIS FROM ENTERING THE DRAINAGE PIPE.
- REFER TO MANUFACTURER FOR RECOMMENDED INSTALLATION GUIDELINES.



ROOF LINES & DOWNSPOUTS

EXISTING IMPERVIOUS AREA

HOUSE = 890 S.F.
 WALK = 80 S.F.
 PATIO = 175 S.F.
 DRIVE = 260 S.F.

PROPOSED IMPERVIOUS AREA

TOTAL = 1,400 S.F.
 ROOF AREA W/ OVERHANG = 3,021 S.F.
 DRIVE'S = 265 S.F. + 288 S.F. = 553 S.F.
 STAIRS = 75 + 70 = 145 S.F.
 PATIO'S = 140 + 130 = 270 S.F.
 TOTAL = 3,989 S.F.

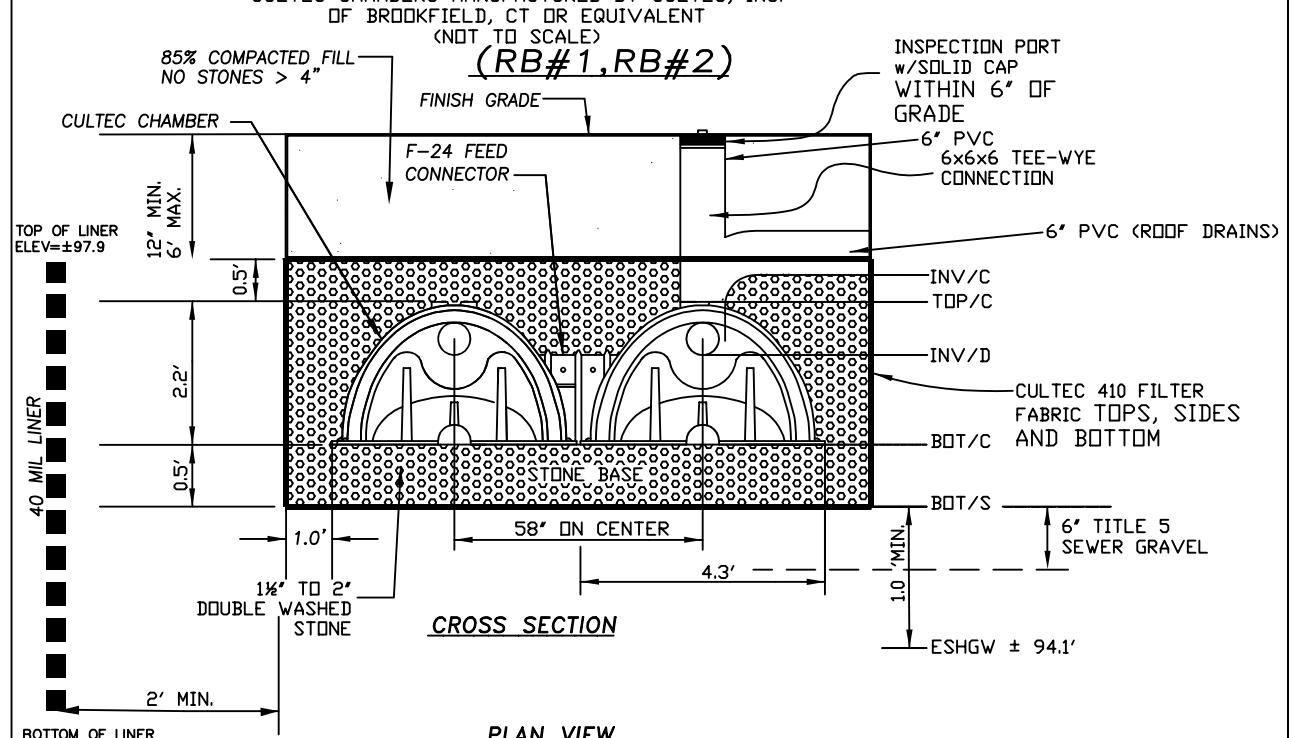
NET IMPERVIOUS INCREASE

= 2,589 S.F.

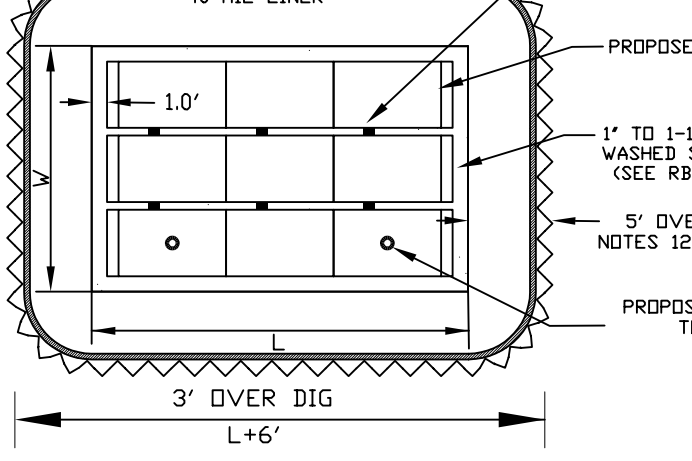
NOTES

- SEE 8/25/21 DPW ENGINEERING DIVISION MEMO (4 PAGES) FOR ADDITIONAL SITE DEVELOPMENT REQUIREMENTS.
- THIS PLAN SHALL NOT BE RECORDED OR USED TO ESTABLISH PROPERTY LINES.
- ZONING CLASSIFICATION: RESIDENCE BU-1.
- ALL ELEVATIONS SHOWN HEREON REFER TO N.A.V.D. OF 1988.
- THE PLANIMETRIC SITE FEATURES AND ALL UTILITIES SHOWN HEREON ARE BASED ON WORK PERFORMED BY ROBBER SURVEY DATED: 5/11/2020.
- UTILITIES ARE CONSIDERED APPROXIMATE. FURTHERMORE, THE TOTAL EXTENT OF THE UNDERGROUND UTILITIES IS UNKNOWN.
- THIS PLAN IS FOR PERMITTING SUBMISSIONS & CITY REVIEW APPROVAL(S) ONLY.
- IN LOCATIONS WHERE WATER SERVICE LINES CROSS SEWER LINES AN 18" MIN. VERTICAL SEPARATION SHALL BE PROVIDED.
- FROM "CITY OF NEWTON, MASS. GENERAL CONSTRUCTION DETAILS" (REVISED THROUGH SEPT. 2020) THE FOLLOWING NUMBERED DETAILS ARE INCORPORATED BY REFERENCE & APPLICABLE TO THE FUTURE CONSTRUCTION WORK.
 - STREET DESIGN & PAVEMENT DETAILS 1, 3, 11 & 19*
 - WATER, SEWER & DRAINAGE 21, 22, 23, 26, 40, 41, 46 & 56
- *SEE "FINAL TRENCH DETAIL" AS ISSUED BY CITY.
- SEE ARCHITECTURAL PLANS DATED 10/19/21 BY STUDIO 47 OF SUDBURY, MASS.

CULTEC RECHARGER 280-HD



RECHARGE BASIN SCHEDULE OF ELEVATIONS & DIMENSIONS



DESCRIPTION	RB#1	RB#2
TOP/C TOP CULTEC	97.7±	97.7±
INV/C TOP ENTRY	97.8±	97.8±
INV/D END UNIT ENTRY	N/A	97.0±
BOT/C BOTTOM CULTEC	95.6±	95.6±
BOT/S BOTTOM STONE	95.1±	95.1±
STONE AROUND	1.0'	1.0'
# OF UNITS	3	8
OVERALL FOOTPRINT (WxL)	6'x24'	10.3'x31'

NOTE: A&B LAYERS AND FILL MUST BE REMOVED TO OVER DIG AND INSPECTED PRIOR TO PLACEMENT OF STONE BASE.

CULTEC (RB) NOTES

- THE CHAMBERS WILL BE MANUFACTURED BY CULTEC, INC. OF BROOKFIELD, CT (203-775-4416).
- CONTACT CULTEC, INC. FOR SUBMITTAL PACKAGES AND TO PURCHASE PRODUCT.
- REFER TO MANUFACTURER FOR RECOMMENDED INSTALLATION GUIDELINES.
- THE STANDARD DUTY VERSION OF THE CHAMBER COMES STANDARD WITH A 4.75 INCH INLET/OUTLET OPENING, THE HEAVY DUTY VERSION DOES NOT COME WITH A PRE-DRILLED INLET/OUTLET.
- HEAVY DUTY CHAMBERS ARE DESIGNED TO WITHSTAND AASHTO H20 LOAD RATING (32,000 LBS. AXLES) WHEN INSTALLED ACCORDING TO CULTEC'S RECOMMENDED INSTALLATION INSTRUCTIONS. HEAVY DUTY UNITS ARE DESIGNATED BY A COLORED STRIPE FORMED INTO THE PART ALONG THE LENGTH OF THE CHAMBER.
- POLYETHYLENE CHAMBERS MUST HAVE THE ABILITY TO ACCEPT AND CARRY PIPE THROUGH ITS INTEGRALLY FORMED VERTICAL SUPPORT WALL WITHOUT THE USE OF SEPARATE PIPE HANGERS.
- UNITS WILL HAVE A RAISED INTEGRAL CAP AT THE TOP OF THE ARCH IN THE CENTER OF EACH UNIT TO BE USED AS AN OPTIONAL INSPECTION PORT OR CLEAN-OUT.
- THE UNITS MAY BE TRIMMED TO CUSTOM LENGTHS BY CUTTING BACK TO ANY CORRUGATION.
- REPEATING SUPPORT PANELS AND END WALLS OF THE ELONGATED CHAMBER SHALL BE SPACED EVERY 7.0 FEET.
- ALL RECHARGE BASINS MUST BE INSTALLED IN ACCORDANCE WITH ALL APPLICABLE LOCAL, STATE AND FEDERAL REGULATIONS.
- ALL STONE AGGREGATE USED IN CONSTRUCTION OF THE RECHARGE BASIN SHALL BE 1-1/2" TO 2" NOMINAL DIAMETER AND DOUBLE WASHED.
- THE ENTIRE A & B SOIL HORIZONS AND ANY ADDITIONAL DELETERIOUS MATERIAL(S) SHALL BE REMOVED FOR A DISTANCE OF 6" INTO THE C SOIL HORIZON AND TO THE SPECIFIED DISTANCE AROUND THE LEACHING FACILITY AS SHOWN IN PLAN VIEW. THE EXCAVATION SHALL BE BACK FILLED UTILIZING TITLE 5 SEWER GRAVEL SELECT IMPORTED TITLE 5 SEWER GRAVEL SHALL SATISFY THE SIEVE GRADING REQUIREMENTS OF TITLE 5 SEC. 15.255(3). A 6" MINIMUM OF TITLE 5 SEWER GRAVEL SHALL BE PLACED BELOW THE 1-1/2" STONE IN EACH RECHARGE BASIN.
- 40 MIL LINER SHALL EXTEND 6 INCHES INTO C LAYER. TOP OF LINER APPROXIMATELY 0.2' HIGHER THAN TOP OF CULTEC UNIT. BOTTOM OF 4" LINER TO BE APPROX. 12" BELOW "BOTTOM OF STONE" (SEE RECHARGER BASIN SCHEDULE OF ELEVATIONS AND DIMENSIONS).

"#55 COLELLA ROAD SITE DEVELOPMENT PLAN"

LAND IN
NEWTON, MASS.

PREPARED FOR: MICHAEL LOHIN
 45 WHITE OAK ROAD
 WELLESLEY, MA 02481

SCALE: 1" = 10' DATE: 24 JUNE 2021

PREPARED BY: **THE JILLSON COMPANY, INC.**
 32 FREMONT STREET
 NEEDHAM HEIGHTS, MA 02494
 (781) 400-5946
 www.JILLSONCOMPANY.com



REVISIONS

REV	DATE	DESCRIPTION
1	6/29/21	SEWER, WATER & GAS CONNECTIONS
2	03/04/22	CITY DPW ENG. DIV. 8/25/21 REVIEW COMMENTS