

N'O
PARKING
THIS
SIDE

STOP

Newton Parks, Recreation + Culture Department

Spears Park

Community Garden Project Kick-Off Meeting

March 24th, 2022

6:00PM

Jackson Homestead And Museum

527 Washington St, Newton, MA 02458

www.newtonma.gov/government/parks-recreation-culture/parks-open-space

AGENDA

1

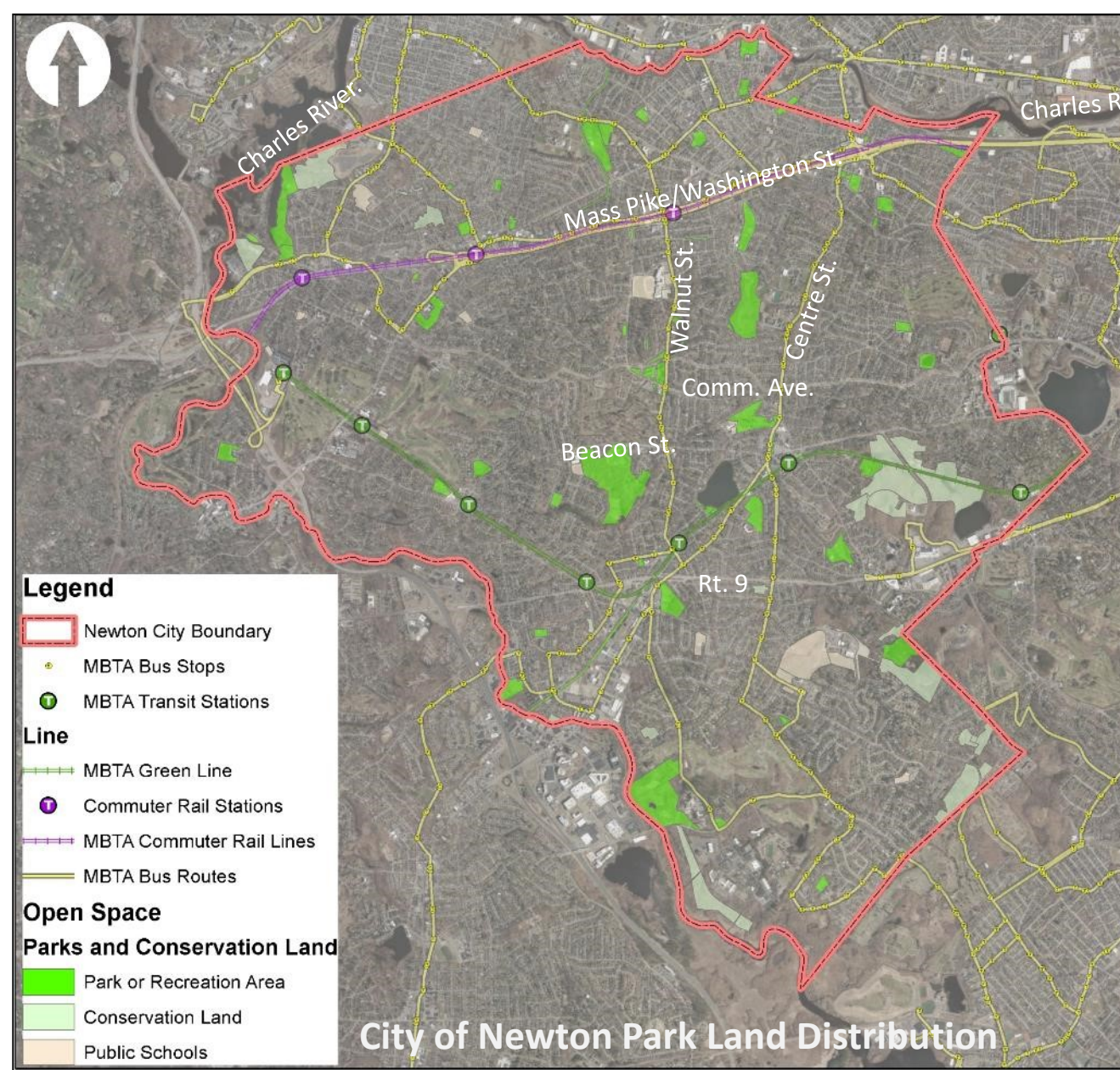
BRIEF CAPITAL PLAN AND PROJECT SUMMARY

2

COMMUNITY GARDEN EXAMPLES

3

NEXT STEPS

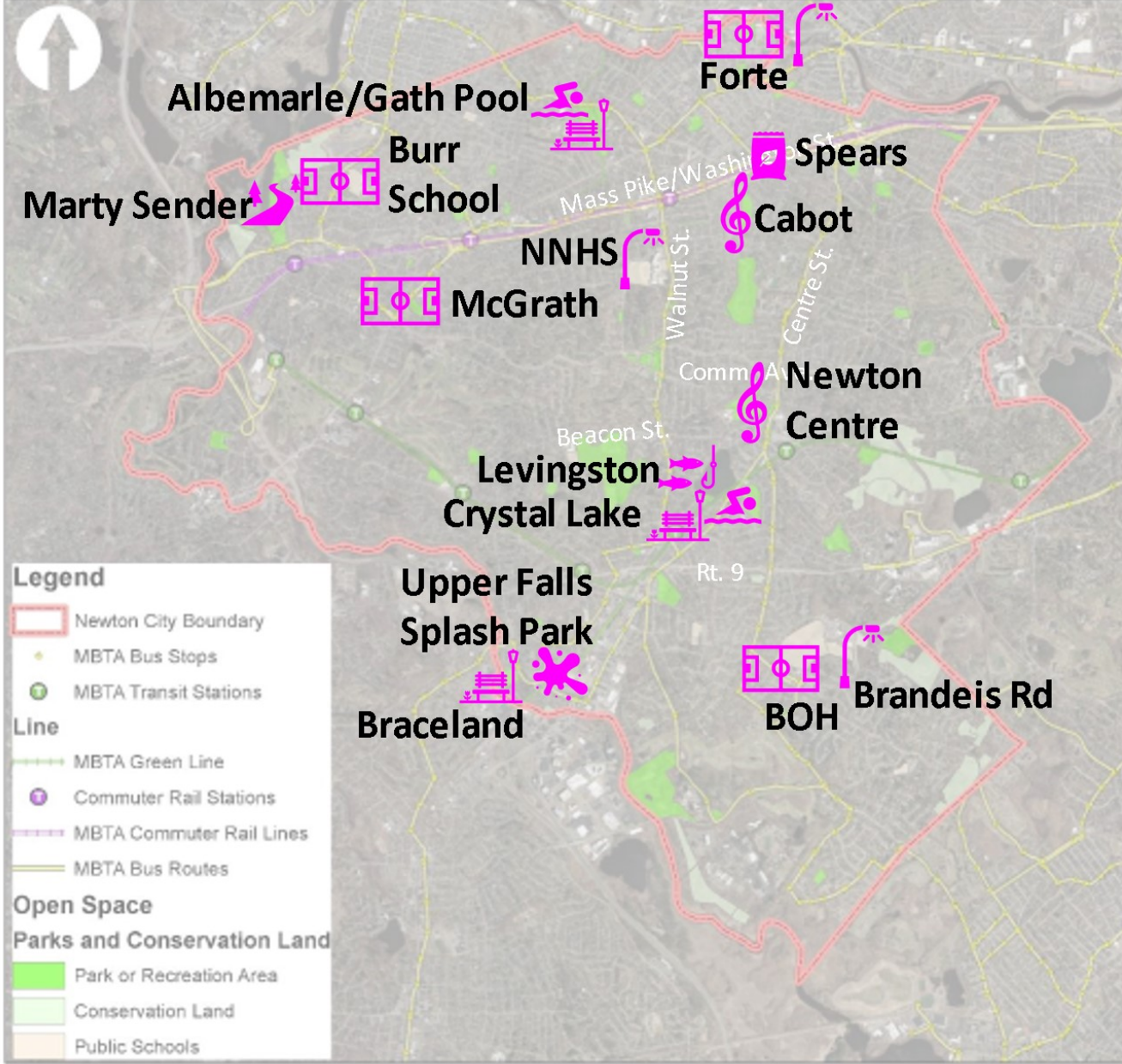


PARKS, RECREATION & CULTURE OVERVIEW:

- Manage and oversee nearly 600 Acres of park land with varying recreational interests including:
 - Aquatic facilities
 - Tracks + fields
 - Trails, pathways + safe routes to schools
 - Playgrounds + tot Lots
 - Field houses + community centers
 - Hard courts
 - Passive areas
 - Outdoor exercise equipment
 - Wooded areas
 - Outdoor challenge courses
 - Dog parks
 - Splash pads
 - Historic significance
 - Wetlands and waterways
- Spread across all Villages, Wards + School zones

Newton Parks, Recreation and Culture Department

Capital Improvement Plan



5-YEAR CAPITAL PLAN PROJECTS:

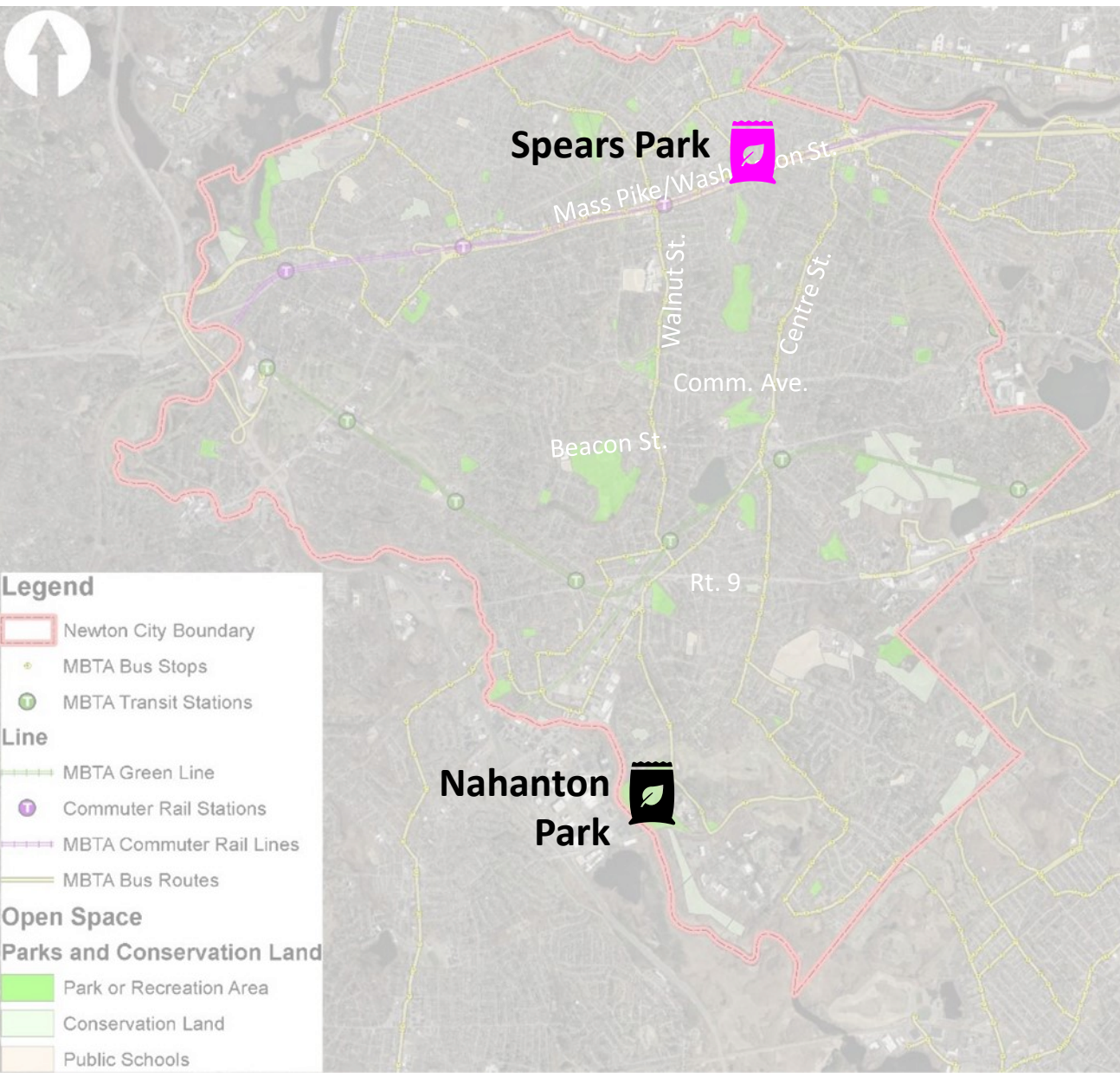
- ALBEMARLE PLAYGROUND MASTER PLAN/ GATH POOL PROJECT
- BURR SCHOOL FIELD IMPROVEMENTS
- BOBBY BRACELAND/ UPPER FALLS PLAYGROUND IMPROVEMENTS
- BROWN/OAK HILL FIELD IMPROVEMENTS
- CABOT PARK PATHWAYS AND PAVILION
- CRYSTAL LAKE PARK + BEACH MASTER PLAN
- FORTE PARK FIELD AND SPORTS LIGHTING IMPROVEMENTS
- LEVINGSTON COVE IMPROVEMENTS
- MARTY SENDER GREENWAY RESTORATION PH1 & 2
- MCGRATH PARK FIELDS
- NEWTON CENTRE PLAYGROUND PERFORMANCE PAVILION PROJECT
- NEWTON SOUTH BRANDEIS RD. FIELD SPORTS LIGHTING
- NEWTON NORTH TIGER STADIUM SPORTS LIGHTING
- SPEARS PARK COMMUNITY GARDENS PROJECT
- UPPER FALLS SPLASH PARK PROJECT

Newton Parks, Recreation and Culture Department
Capital Improvement Plan



EXISTING COMMUNITY GARDENS

PROPOSED COMMUNITY GARDENS



Newton Parks, Recreation and Culture Department

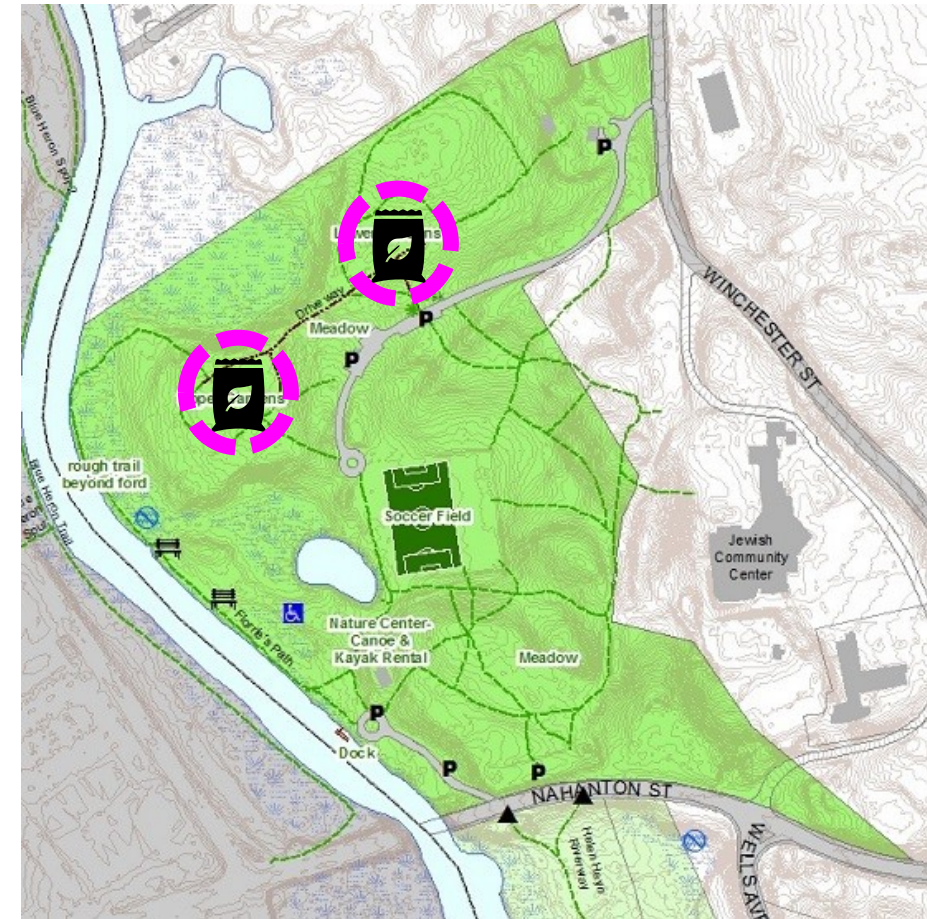
Capital Improvement Plan

NAHANTON PARK COMMUNITY GARDENS



Managed by Parks, Recreation & Culture:

- Upper Garden & Lower Garden
- Approx. 150 – 10'x20' Plots
- Approx. 1.4 Acres



N'O
PARKING
THIS
SIDE

STOP

SPEARS PARK



SPEARS PARK

- ¼ Acre
- Open Lawn and Perimeter Trees
- Highly visible Open Space



Spears Park

City of Newton,
Massachusetts



The information on this map is from the Newton Geographic Information System (GIS). The City of Newton cannot guarantee the accuracy of this information. Each user of this map is responsible for determining its suitability for his or her intended purpose. City departments will not necessarily approve applications based solely on GIS data.

Legend	
	Two Foot Contour
	Ten Foot Contour
	Property Boundaries

CITY OF NEWTON, MASSACHUSETTS
Mayor - Ruthanne Fuller

Map Date: November 16 2021

SPEARS PARK COMMUNITY GARDEN PROJECT REQUIREMENTS

MANAGING PARTNERS:

- A NON-PROFIT 'FRIENDS' GROUP TO MANAGE AND ENFORCE THE DEPARTMENT'S COMMUNITY GARDEN POLICIES
- CITY TO FUND DESIGN AND CONSTRUCTION SUPERVISION
- CITY TO FUND FENCE ENCLOSURE, PATHWAYS AND WATER CONNECTION

AESTHETICS AND AMENITIES:

- +/- 50 RAISED GARDEN BEDS
- PERIMETER CHAIN LINK FENCE
- WATER CONNECTION
- RAISED GARDEN BEDS (SOME WHEELCHAIR ACCESSIBLE)
- ACCESSIBLE PATHWAYS
- COMPOSTING AREA
- SMALL STORAGE SHED

FUNDRAISING:

- RAISED BEDS
- SHED
- COMPOST BIN
- COMMUNITY TOOLS AND OTHER MISC. GARDENING EQUIPMENT

NAVY YARD FIELD COMMUNITY GARDENS, NATICK



- .1 Acres
- Approx. 22 – Varying Size plots
- Stone dust
- Chain Link Fence
- Shed
- Some seating

TYPICAL RAISE GARDEN BEDS + PATHWAYS



- Food-Safe Recycled Plastic or Wood
- Pathways around garden beds

FENCE + COMPOSTING



Earth Machine

- Capacity: 10.5 Cubic Feet
- Height: 33"
- Diameter: 33"
- Rodent Resistant



Minimesh Chain Link Fence:

- 1" Mesh Openings
- Maintains light penetration
- Keeps larger critters out (Opossums, Racoons, etc.)

SMALL TOOL SHEDS



NEXT STEPS

DESIGN AND COST ESTIMATES:

- THE CITY HAS FUNDED TOPOGRAPHIC SURVEY (FIELD WORK COMPLETED)
- THE CITY WILL FUND CONCEPTUAL TO SCHEMATIC DESIGN PENDING PARKS & RECREATION COMMISSION PROJECT APPROVAL
- THE CITY WILL RUN AND MANAGE UP TO 2 COMMUNITY PROJECT MEETINGS AND PARKS & RECREATION COMMISSION MEETINGS
- THE CITY WILL DEVELOP SCHEMATIC PROJECT COSTS ESTIMATE

FUNDRAISING FOR CONSTRUCTION:

- UPON PROJECT APPROVAL AND PROJECT COST REVIEW, THE 'FRIENDS' WILL BE GIVEN THE SUPPORT MATERIALS FOR FUNDRAISING

Questions and Discussion