



Public Safety & Transportation Committee Agenda

City of Newton **In City Council**

Wednesday, April 20, 2022

7:30 PM NOTE Late start time

The Public Safety & Transportation Committee will hold this meeting as a virtual meeting on Wednesday, April 20, 2022 at 7:30 pm. To view this meeting using Zoom use this link <https://us02web.zoom.us/j/85127522606> or call 1-646-558-8656 and use the following Meeting ID: 851 2752 2606

Item Scheduled for Discussion:

Chair's Note: *The Committee will join the Public Facilities Committee for discussion on the following 1 (one) item:*

Referred to Public Safety & Transportation and Public Facilities Committees

#239-22 **Approval of a 25% design for the Commonwealth Avenue Carriageway Redesign**
HER HONOR THE MAYOR requesting the approval of a 25% design for the Commonwealth Avenue Carriageway Redesign Project in Auburndale. The Council needs to select one of two alternatives for the Ash street intersection portion of this state-funded project.

Public Facilities Held 7-0 on 04/06/22

Public Safety & Transportation Held 7-0 on 04/06/22

Respectfully submitted,

Andreae Downs, Chair

The location of this meeting is accessible and reasonable accommodations will be provided to persons with disabilities who require assistance. If you need a reasonable accommodation, please contact the city of Newton's ADA Coordinator, Jini Fairley, at least two business days in advance of the meeting: jfairley@newtonma.gov or (617) 796-1253. The city's TTY/TDD direct line is: 617-796-1089. For the Telecommunications Relay Service (TRS), please dial 711.

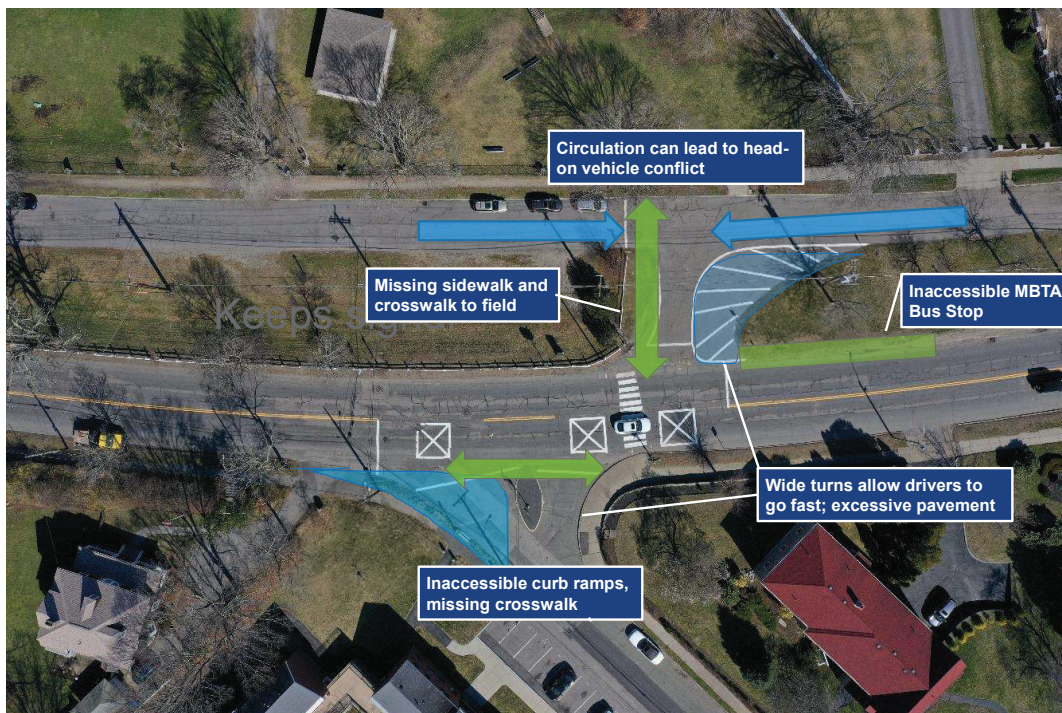
Newton Carriageway / Commonwealth Avenue (Route 30) Reconstruction Project

Nicole Freedman

*Director of Transportation Planning
City of Newton*

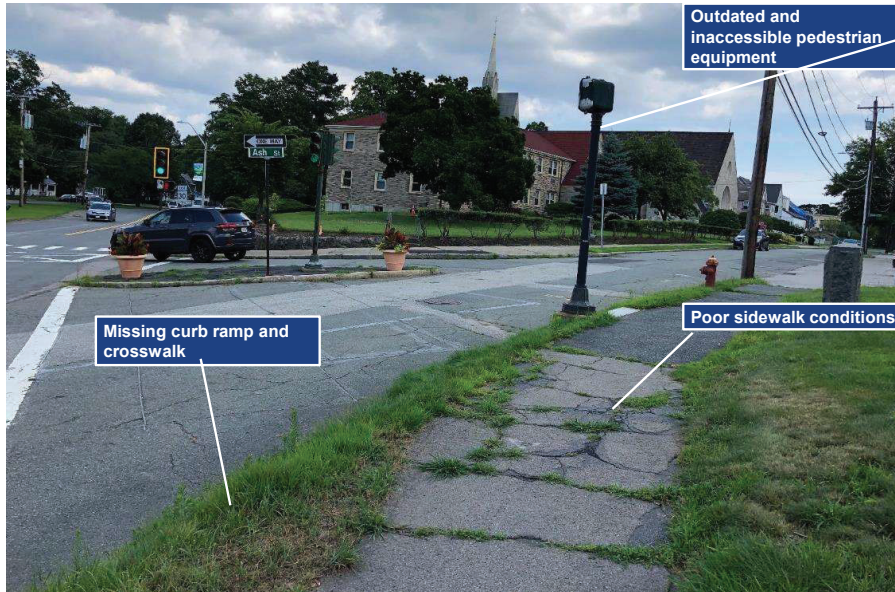
April 20, 2022

Existing Issues: Ash Street



Existing Issues: Ash Street

- *Complete Streets Accommodations:* Lack of bicycle facilities and lack of accessible pedestrian accommodations

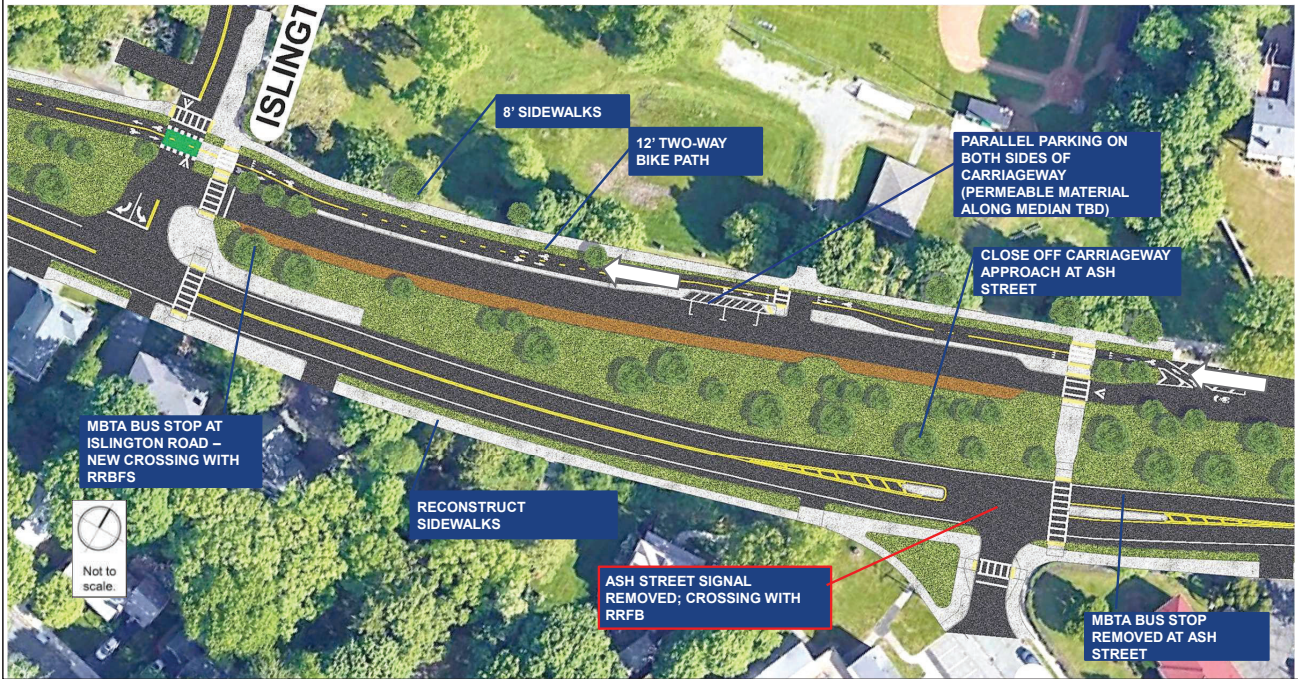


Ash Street Signal

We cannot reconstruct any part of Ash Street and keep the signal

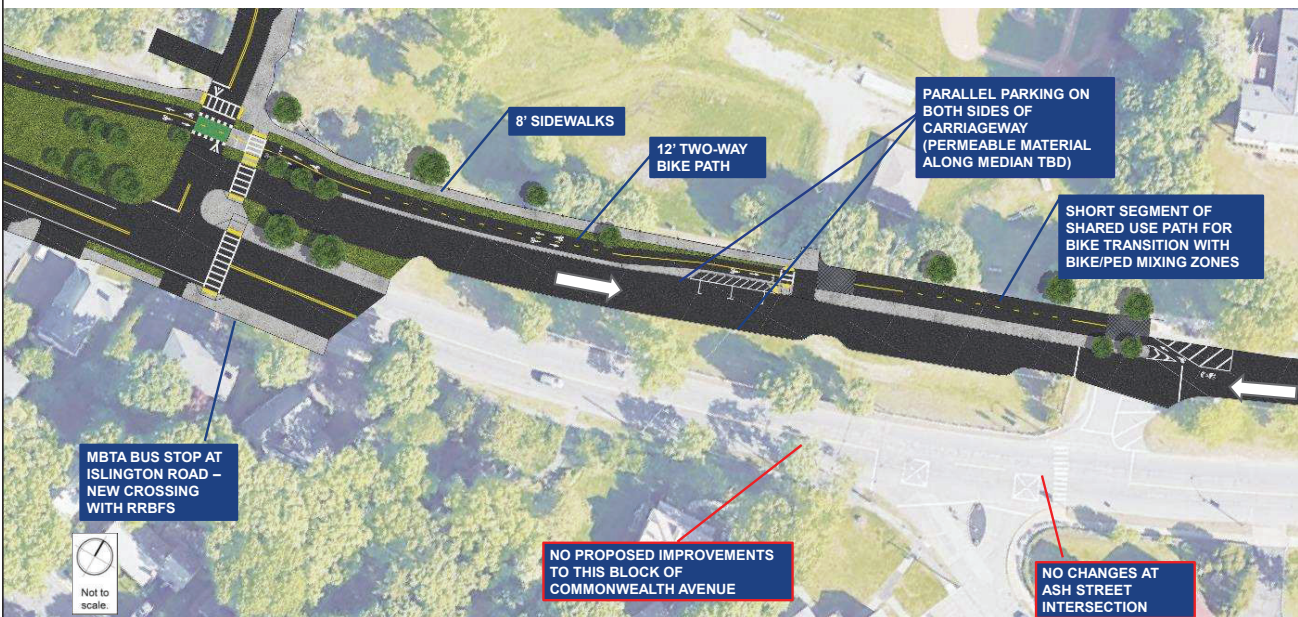
Islington Road to Ash Street – Preferred Design (with Ash)

No change since 4/6/22 public hearing. Removes signal. Upgrades Ash.



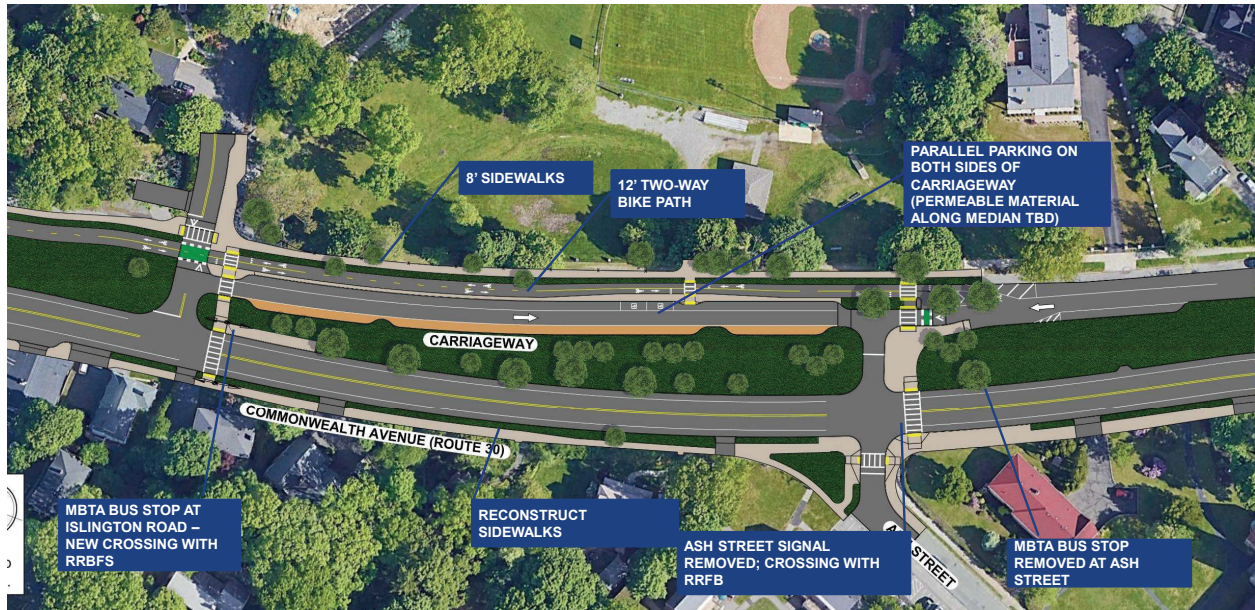
Islington Road to Ash Street – Alt Design (w/out Ash).

No change since 4/6/22 public hearing. Keeps signal. No Ash upgrades.



Islington Road to Ash Street – “Option 3” (with Ash)

New since 4/6. Removes signal. Upgrades Ash. “Signal-ready”



Preferred Design (With Ash), from 4/6
Upgrades Ash
Removes signal
Closes intersection



Alt Design (Without Ash), from 4/6
No Ash upgrades
Keeps signal



“Option 3” (With Ash), NEW since 4/6
Upgrades Ash
Removes signal
Keep intersection – “signal-ready”

Islington Road Average Delay at AM Peak Hour

Intersection/ Movement	No Build Conditions (Signal)	Preferred Design (Upgrade Ash. No Signal)	Alternative (Keep signal. No Ash Upgrades)	“Option 3” – (Upgrade Ash. No Signal but Signal- ready)
	Average Delay (Seconds)			
Commonwealth Avenue/ Islington Road				
Islington SB left	66	153	50	75
Islington SB right		18		
Commonwealth Avenue/ Ash Street				
Ash NB left/right	36	72	36	126
Carriageway SB left/right	34	-	34	113

Islington Road Average Delay at PM Peak Hour

Intersection/ Movement	No Build Conditions (Signal)	Preferred Design (Upgrade Ash. No Signal)	Alternative (Keep signal. No Ash Upgrades)	“Option 3” – (Upgrade Ash. No Signal but Signal- ready)
	Average Delay (Seconds)			
Commonwealth Avenue/ Islington Road				
Islington SB left	42	64	35	46
Islington SB right		18		
Commonwealth Avenue/ Ash Street				
Ash NB left/right	48	45	48	66
Carriageway SB left/right	45	-	45	48

Question: Why can't we upgrade Ash St and add a signal? Can the City install the signal later?

The project is funded by MassDOT. MassDOT law does not allow installation of a signal that does not meet traffic warrants.

If we reconstruct Ash, per MassDOT rules, we will need MassDOT approval for future installation of a signal.

If the City reconstructs Ash separate from this project, the City would not recommend the installation of a traffic signal at at Ash Street because it does not meet signal warrants.

Question: Can the City allow eastbound travel on the Carriageway from Islington to Melrose?

We reviewed this option. The Melrose signal currently operates with significant delay. The addition of vehicles from Islington and Ash with rerouting will increase delay from ~60 seconds to ~120 seconds at Melrose southbound.

Question: Can the City install a roundabout at Islington?

We are continuing to review this option and will present more at our meeting.

Question: Can we add more traffic calming to Commonwealth Avenue

We are looking into what additional traffic calming will be possible.

Question: Did the pandemic influence the traffic data?

Traffic data was taken twice. The first collection occurred before Covid (February 25-27), nearly 2 weeks before the State of Emergency was declared, and before school was closed in Newton.

A second set of data was taken in June 2021. We worked closely with Parks & Rec to ensure that traffic count data was collected during a time that Lyons Field was being heavily used.

Question: Can we add more parking spaces for the dog park

We are looking at adding up to 5 parking spaces near Woodbine on Comm Ave for combined use of the existing park and any future dog park, plus the businesses/ residences on Woodbine. To make a final determination, we are doing a parking study.

Anticipated Project Timeline

