

**City of Newton
Fiscal Year 2013
Classification Hearing
December 3, 2012
Elizabeth Dromey, Director
Assessment Administration**

City of Newton
FY2013 Classification Hearing
December 3, 2012

**City of Newton
Fiscal Year 2013
Classification Hearing**

Table of Contents

Page 1	Opening Memorandum
Page 2	Aldermen Questions and Answers
Page 6	Real Estate Value Changes: FY2012 to FY2013
Page 7	Property Values FY2013 by Land Use (Class)
Page 8	Historical Tax Base Analysis FY1983 to Present
Page 9	Tax Rates and Impact by Class: Average and Median Dollar Changes
Page 10	Tax Rates and Impact by Class: Average and Median Percent Changes
Page 11	Historical Levy Amounts and Increases FY1982 to Present
Page 12	Impact of Assessments on Tax Increases/Decreases
Page 13	Historical Tracking of Residential/Commercial Shifts Selected by the Board of Aldermen
Page 14	Historical Tax Rates: Fiscal Year 1980 to Present
Page 15	Shift and Tax Rate Table with Residential Factor
Page 16	Mean and Median Sales Prices by Neighborhood
Page 17	Assessing Neighborhood Map
Page 18	Summary of Residential Single and Multi Family Sales
Page 20	Largest Tax Levies Statewide (Top 20)
Page 21	Nine Year Single Family Median Sale Price (2004-2012)
Page 22	Tax Shift at 174% Visual Example
Page 23	Summary Sheet
Supplement	Statewide Single Family Tax Bills and Tax Rates FY2012
Supplement	<u>Assessing Frequently Asked Questions</u>

City of Newton
FY2013 Classification Hearing
December 3, 2012

City of Newton



Setti D. Warren
Mayor

ASSESSMENT ADMINISTRATION

Elizabeth Dromey, Director

Telephone
(617) 796-1160
Telefax
(617) 796-1179
tdd-tty
(617) 796-1089
email
dromey@newtonma.gov

Date: November 23, 2012

To: Honorable Setti D. Warren, Mayor
Leonard J. Gentile, Chairman, Finance Committee
Board of Aldermen Members

From: Elizabeth Dromey, Director of Assessment Administration

Subject: Support Information Relative to the Fiscal Year 2013
Property Tax Rate Classification

In anticipation of the public hearing for the FY2013 Tax Rate Classification, scheduled for Monday, December 3, 2012, I offer the attached documents for your reference. These documents reflect preliminary figures and are subject to minor changes prior to the public hearing.

We have made some changes to the classification packet this year. We have added some new features to help assist you in your decision to establish the proportion of the tax levy raised by the residential and commercial classes of property. We have also added a one page summary detailing the various options available.

As always, please contact me at 617-796-1160 if you have any questions or if you would like a more detailed explanation of any information contained in this packet.

1000 Commonwealth Avenue, Newton, MA 02459-1449
www.newtonma.gov

**City of Newton
Fiscal Year 2013
Classification Hearing**

Questions and Answers

1. What is the purpose of this hearing?

The purpose of this hearing is to establish the proportion of the tax levy raised by the residential and commercial classes of property. This hearing is required under Massachusetts General Laws, Chapter 40, Section 56.

2. How do taxes increase or decrease?

Overall tax increases or decreases occur when the Mayor and Board of Aldermen change the amount of tax revenue devoted to the overall City budget.

Based on his determination of the financial needs of the City, the Mayor presented a budget to the Board of Aldermen in the spring of 2012. The Board of Aldermen then conducted budget hearings. The Mayor and the Board of Aldermen approved the budget based on the financial needs determined during the spring budget hearings. These budget hearings determined if the property tax collected for fiscal year 2013 would be higher or lower than property tax collected for fiscal year 2012.

For fiscal year 2012, the levy limit (the amount of taxes that can be raised without a tax override or debt exclusion) was \$250,798,454. For fiscal year 2013, by law, the Aldermen have the option (but are not required) to increase the fiscal year 2012 tax levy by 2.5%. This 2.5% increase is \$6,269,961. Finally, the Aldermen have the option (but are not required) to increase the fiscal year 2012 tax levy by the amount of "new growth" in the City for calendar year 2011. This "new growth" is the additional tax revenue that will be created by either the construction of new properties or improvements to existing properties in the City. The new growth figure submitted to the Massachusetts Department of Revenue for fiscal year 2013 is \$3,121,321.

The maximum amount the fiscal year 2013 tax levy can be (without a tax override or debt exclusion) is:

Fiscal Year 2012 Tax Levy Limit:	\$250,798,454
2.5% Increase:	\$ 6,269,961
New Growth:	\$ 3,121,321

Fiscal Year 2013 Tax Levy Limit:	\$260,189,736
----------------------------------	---------------

Therefore, when the Aldermen opted to increase the tax levy by the 2.5% maximum and apply all of the new growth as new revenue, the Aldermen approved a tax increase of \$9,391,282 for fiscal year 2013. This is an increase of 3.74% from last year's levy limit. This means citywide, the average tax increase has to be 3.74%, because the Aldermen are asking for 3.74% more tax this year as compared to last year.

**City of Newton
Fiscal Year 2013
Classification Hearing**

Questions and Answers

3. Can the Aldermen increase the tax levy more than this amount? How about less than this amount?

The Aldermen cannot increase this levy limit above \$260,189,736 without the approval of a majority of voters in the City of Newton. This can be accomplished by either override or debt exclusion.

The Aldermen always have the option to increase the tax levy less than the maximum amounts allowed by law. This decision would be based on the Aldermen's determination of the financial needs of the City. The Aldermen could elect not to go to the maximum 2.5% increase and/or the Aldermen could elect to not increase the tax levy by the new growth amount. Again, this would be a decision based on the Aldermen's determination of the financial needs of the City.

The Aldermen could also vote to decrease the amount of the tax levy, again based on a determination of the financial needs of the City.

4. What is the Assessors' role in the budget process?

The Assessors play no role in determining the amount of taxes raised each year. As explained above, this is done during the Aldermen's budget hearings and subsequent approval of the City budget by the Mayor and the Board of Aldermen that occurs each spring.

The Assessors determine the amount of new growth each year. This is done by inspecting all new construction projects and inspecting existing properties with renovations to determine the increase in the property value due to the construction/renovations. This new growth process will be approved by the Massachusetts Commissioner of Revenue.

The Assessors determine the value, based on use, of all taxable property in the City. These assessed values represent the value of the property as of January 1, 2012 for fiscal year 2013. These assessed values determine the proportion of the tax levy that each property owner will pay, which will ultimately be determined by the decision of the Board of Aldermen on what proportion of the levy to shift (or not) from residential property owners to commercial, industrial and personal property owners.

**City of Newton
Fiscal Year 2013
Classification Hearing**

Questions and Answers

5. What does it mean “adopt the residential factor”?

This is the purpose of the classification hearing. The Aldermen will decide how much of the tax levy the owners of residential properties will pay and how much of the tax levy the owners of commercial/industrial/personal property will pay. This is the decision that creates two tax rates (or split tax rates) in the City. The two tables below show the process with fiscal year 2013 numbers. If there was no “shift”, there would be a single tax rate and the following table would apply:

<u>Class</u>	<u>FY2013 Value</u>	<u>%Value</u>	<u>%Tax</u>
Residential	\$18,445,998,977	89.35%	89.35%
Commercial	\$1,696,718,623	8.22%	8.22%
Industrial	\$150,970,900	0.73%	0.73%
Personal	\$351,617,700	1.70%	1.70%
Total	\$20,645,306,200	100.00%	100.00%

This means the residential property makes up 89.35% of the overall value in the City and therefore would pay 89.35% of the overall tax levy. The commercial property makes up 8.22% of the overall value in the City and therefore would pay 8.22% of the overall tax levy and so on for industrial and personal property classes.

The classification hearing is when the Board of Aldermen must decide whether or not to shift more of the tax levy onto the commercial/industrial/personal property owners and less onto the residential property owners. By law, the maximum allowable shift for Newton is 175%. (The Aldermen shifted 174% last fiscal year). If the Aldermen decide to shift 174% again this year, the process would be to multiply the (%Value) of the commercial, industrial, and personal property classes by 174% (1.74) to determine the increased percentage of the tax levy that those various classes will pay. By increasing those percentages, the residential percentage is lowered by 7.88%. The table below illustrates this.

<u>Class</u>	<u>FY2013 Value</u>	<u>%Value</u>	<u>Shift</u>	<u>%Tax</u>
Residential	\$18,445,998,977	89.35%	-	81.47%
Commercial	\$1,696,718,623	8.22%	174%	14.30%
Industrial	\$150,970,900	0.73%	174%	1.27%
Personal	\$351,617,700	1.70%	174%	2.96%
Total	\$20,645,306,200	100.00%		100.00%

**City of Newton
Fiscal Year 2013
Classification Hearing**

Questions and Answers

Put another way, once the factor of 174% (1.74) is applied to commercial, industrial and personal property, those classes then become responsible for 18.53 % of the tax levy. That number then is subtracted from 100% to arrive at the residential proportion of 81.47% of the tax levy.

So, if the Aldermen decide to shift 174%, the owners of commercial, industrial and personal property, which represent 10.65% of the taxable value, become responsible for 18.53% of the property tax levy. The result of this vote is that the residential property owners, whose property represents 89.35% of the taxable value, become responsible for 81.47% of the property tax levy.

The actual vote taken is on what residential factor to adopt. This residential factor results in the intended shift from the residential taxpayers onto the commercial, industrial and personal property taxpayers.

That is the ultimate purpose of the classification hearing.

6. Do the Aldermen have to sign something at the end of the classification hearing?

Yes. The Aldermen must sign the form LA5. This is the form sent to the Department of Revenue as part of the tax recapitulation (Tax Recap) sheet and approval of the tax rates established at the classification hearing. These tax rates estimated for your review may be adjusted via rounding and subject to change of typically not greater than one to two pennies.

7. What are the components of Proposition 2 ½?

Proposition 2 ½ has two basic components. First, you cannot increase the prior year levy limit by more than 2.5% (plus new growth) without voter approval and second, your levy limit cannot exceed 2.5% of your total taxable value. Another way of stating the second component is a community's tax rate cannot exceed \$25.00 per \$1000 if the community has a single tax rate.

8. What is "personal property"?

Personal property is the inventory, furniture, machinery, and equipment used while conducting business. This is assessed to business owners. If the business is incorporated, it is exempt from certain personal property taxes (furniture and inventory are exempt for corporations).

City of Newton
 Fiscal Year 2013
 Classification Hearing
 Real Estate Value Changes FY2012 to FY2013

<u>Property Class</u>	<u>FY2012 Base Values</u>	<u>FY2013 Values</u>	<u>Percent Change</u>
<u>Residential Classes</u>			
Single Family	\$13,517,337,500	\$13,666,453,000	1.10%
Two and Three Family	\$1,901,401,800	\$1,887,638,600	-0.72%
Condominium	\$2,022,752,100	\$2,058,823,000	1.78%
Apartments	\$491,388,800	\$495,521,000	0.84%
Vacant Land	\$92,336,800	\$92,614,700	0.30%
<u>Commercial Classes</u>			
Commercial	\$1,613,409,100	\$1,610,873,900	-0.16%
Industrial	\$151,446,800	\$150,970,900	-0.31%
<u>Mixed Use Classes</u>			
Mixed Use	\$258,872,800	\$251,677,600	-2.78%

Please note these valuation changes include increases due to new construction/renovations and/or additions (new growth) and properties changing classes.
 (For example: Properties leaving Two-family category and entering the Condominium category).

City of Newton
 Fiscal Year 2013
 Classification Hearing
 Property Values by Class

RESIDENTIAL PROPERTY CLASSES

<u>Property Type</u>	<u>Count</u>	<u>Value</u>	<u>Percent of Value</u>
Single Family	16,961	\$13,666,453,000	66.20%
Condominium	4,575	\$2,058,823,000	9.97%
Miscellaneous	173	\$60,935,000	0.30%
Two Family	2,880	\$1,698,268,600	8.23%
Three Family	290	\$189,370,000	0.92%
Apartments	157	\$495,521,000	2.40%
Vacant Land	853	\$92,614,700	0.45%
Mixed Use Residential	264	\$184,013,677	0.89%
Total Residential	26,153	\$18,445,998,977	89.35%

COMMERCIAL/INDUSTRIAL/PERSONAL PROPERTY CLASSES

<u>Property Type</u>	<u>Count</u>	<u>Value</u>	<u>Percent of Value</u>
Commercial	762	\$1,610,873,900	7.80%
Industrial	69	\$150,970,900	0.73%
Forest (Ch. 61)	1	\$500	0.00%
Golf Courses (Ch. 61B)	17	\$18,180,300	0.09%
Mixed Use	264	\$67,663,923	0.33%
Personal Property	1,120	\$36,710,800	0.18%
Personal Property	1,322	\$72,985,200	0.35%
Personal Property	2	\$164,551,000	0.80%
Personal Property	11	\$66,676,600	0.32%
Personal Property	1	\$1,425,100	0.01%
Personal Property	7	\$9,269,000	0.04%
Total CIP	3,576	\$2,199,307,223	10.65%
Total Value		\$20,645,306,200	100.00%
Exempt Property		\$3,272,069,000	

City of Newton
Fiscal Year 2013
Classification Hearing
Tax Base Analysis

<u>Fiscal Year</u>	<u>Prior Year Levy Limit</u>	<u>2.50% Increase</u>	<u>New Growth</u>	<u>Levy Limit</u>	<u>Actual Levy</u>	<u>Reserve</u>
1983	\$75,318,031	\$1,882,951	\$1,892,538	\$78,499,175	\$75,171,091	\$3,328,084
1984	\$78,499,175	\$1,962,479	\$954,858	\$81,416,512	\$77,928,599	\$3,487,913
1985	\$81,416,512	\$2,035,413	\$1,131,529	\$84,583,454	\$79,876,814	\$4,706,640
1986	\$84,583,454	\$2,114,586	\$1,737,244	\$88,435,285	\$82,325,631	\$6,109,654
1987	\$88,435,285	\$2,210,882	\$2,109,793	\$92,755,960	\$86,340,425	\$6,415,535
1988	\$92,755,960	\$2,318,899	\$1,483,053	\$96,557,912	\$89,629,586	\$6,928,326
1989	\$96,557,912	\$2,413,948	\$1,774,043	\$100,745,902	\$95,581,274	\$5,164,628
1990	\$100,745,902	\$2,518,648	\$2,148,683	\$105,413,233	\$105,205,222	\$208,011
1991	\$105,413,233	\$2,635,331	\$806,319	\$108,854,883	\$108,838,759	\$16,124
1992	\$108,854,883	\$2,721,372	\$1,179,709	\$112,755,964	\$112,689,184	\$66,780
1993	\$112,755,964	\$2,818,899	\$1,417,235	\$116,992,098	\$116,941,920	\$50,178
1994	\$116,992,098	\$2,924,802	\$1,280,054	\$121,198,833	\$121,079,222	\$119,611
1995	\$121,198,833	\$3,030,062	\$1,109,665	\$125,342,219	\$125,293,531	\$48,688
1996	\$125,338,470	\$3,133,462	\$1,227,029	\$129,698,961	\$129,682,983	\$15,978
1997	\$129,698,961	\$3,242,474	\$1,220,214	\$134,161,649	\$134,082,167	\$79,482
1998	\$134,161,649	\$3,354,041	\$1,493,092	\$139,008,782	\$138,934,388	\$74,394
1999	\$139,008,782	\$3,475,220	\$1,627,559	\$144,111,561	\$144,105,992	\$5,569
2000	\$144,111,561	\$3,602,789	\$1,761,734	\$149,476,084	\$149,411,520	\$64,564
2001	\$149,476,084	\$3,736,902	\$2,931,316	\$156,144,302	\$156,140,737	\$3,565
2002	\$156,144,302	\$3,903,608	\$2,335,800	\$162,383,709	\$162,278,416	\$105,293
2003	\$162,383,709	\$4,059,593	\$2,231,188	\$180,174,490	\$180,170,220	\$4,270
2004	\$180,174,491	\$4,504,362	\$2,720,067	\$187,398,920	\$187,384,724	\$14,196
2005	\$187,398,920	\$4,684,973	\$2,152,049	\$194,235,942	\$194,189,921	\$46,021
2006	\$194,235,942	\$4,855,899	\$2,150,663	\$201,242,504	\$201,238,041	\$4,462
2007	\$201,242,504	\$5,031,063	\$2,242,123	\$208,515,689	\$208,504,128	\$11,562
2008	\$208,515,689	\$5,212,892	\$2,100,302	\$215,828,884	\$215,772,425	\$56,459
2009	\$215,828,884	\$5,395,722	\$3,711,998	\$224,936,604	\$224,896,509	\$40,095
2010	\$224,936,604	\$5,623,415	\$2,828,806	\$233,388,825	\$233,300,284	\$88,541
2011	\$233,388,825	\$5,834,721	\$2,501,206	\$241,724,752	\$241,707,854	\$16,898
2012	\$241,724,752	\$6,043,119	\$3,030,583	\$250,798,454	\$250,781,839	\$16,615
2013	\$250,798,454	\$6,269,961	\$3,121,321	\$260,189,736	\$260,189,736	\$0

Estimated

FY2013 Construction Growth Has Been Certified by the
Massachusetts Department of Revenue

Please note Fiscal Year 2003 had an \$11,500,000 voter-approved override.
This increased the levy limit beyond 2.5% plus construction growth.

City of Newton
Fiscal Year 2013
Classification Hearing

Impact Calculations on Various Property Classes Using Average and Median Values

<u>AVERAGES</u>	<u>Single Family</u>	<u>Two Family</u>	<u>Commercial</u>	<u>Industrial</u>
FY2012 Value	\$797,671	\$589,417	\$2,098,061	\$2,163,526
FY2012 Tax Rate	\$11.17	\$11.17	\$21.32	\$21.32
FY2012 Tax Bill	\$8,909.99	\$6,583.78	\$44,730.67	\$46,126.37
FY2013 Value	\$805,758	\$589,677	\$2,111,237	\$2,187,984

<u>Shift Selected</u>	<u>Tax Dollars Single Family</u>	<u>Tax Dollars Two Family</u>	<u>Tax Dollars Commercial</u>	<u>Tax Dollars Industrial</u>	<u>Residential Tax Rate</u>	<u>Commercial Tax Rate</u>
160%	\$518.40	\$316.19	-\$2,158.57	-\$2,006.71	\$11.70	\$20.16
161%	\$506.30	\$307.33	-\$1,892.50	-\$1,730.96	\$11.69	\$20.29
162%	\$494.19	\$298.47	-\$1,626.42	-\$1,455.21	\$11.67	\$20.42
163%	\$482.08	\$289.60	-\$1,360.34	-\$1,179.46	\$11.66	\$20.54
164%	\$469.97	\$280.74	-\$1,094.27	-\$903.72	\$11.64	\$20.67
165%	\$457.87	\$271.88	-\$828.19	-\$627.97	\$11.63	\$20.79
166%	\$445.76	\$263.02	-\$562.12	-\$352.22	\$11.61	\$20.92
167%	\$433.65	\$254.16	-\$296.04	-\$76.47	\$11.60	\$21.05
168%	\$421.54	\$245.30	-\$29.97	\$199.28	\$11.58	\$21.17
169%	\$409.44	\$236.44	\$236.11	\$475.02	\$11.57	\$21.30
170%	\$397.33	\$227.58	\$502.19	\$750.77	\$11.55	\$21.42
171%	\$385.22	\$218.72	\$768.26	\$1,026.52	\$11.54	\$21.55
172%	\$373.11	\$209.86	\$1,034.34	\$1,302.27	\$11.52	\$21.68
173%	\$361.01	\$201.00	\$1,300.41	\$1,578.02	\$11.51	\$21.80
174%	\$348.90	\$192.14	\$1,566.49	\$1,853.76	\$11.49	\$21.93
175%	\$336.79	\$183.28	\$1,832.56	\$2,129.51	\$11.48	\$22.05

<u>MEDIANS</u>	<u>Single Family</u>	<u>Two Family</u>	<u>Commercial</u>	<u>Industrial</u>
FY2012 Value	\$680,500	\$563,200	\$760,500	\$854,950
FY2012 Tax Rate	\$11.17	\$11.17	\$21.32	\$21.32
FY2012 Tax Bill	\$7,601.19	\$6,290.94	\$16,213.86	\$18,227.53
FY2013 Value	\$685,900	\$565,200	\$754,200	\$874,200

<u>Shift Selected</u>	<u>Tax Dollars Single Family</u>	<u>Tax Dollars Two Family</u>	<u>Tax Dollars Commercial</u>	<u>Tax Dollars Industrial</u>	<u>Residential Tax Rate</u>	<u>Commercial Tax Rate</u>
160%	\$424.72	\$322.62	-\$1,005.77	-\$599.71	\$11.70	\$20.16
161%	\$414.41	\$314.13	-\$910.72	-\$489.53	\$11.69	\$20.29
162%	\$404.11	\$305.63	-\$815.67	-\$379.36	\$11.67	\$20.42
163%	\$393.80	\$297.14	-\$720.62	-\$269.18	\$11.66	\$20.54
164%	\$383.49	\$288.65	-\$625.57	-\$159.01	\$11.64	\$20.67
165%	\$373.19	\$280.15	-\$530.52	-\$48.84	\$11.63	\$20.79
166%	\$362.88	\$271.66	-\$435.47	\$61.34	\$11.61	\$20.92
167%	\$352.58	\$263.17	-\$340.42	\$171.51	\$11.60	\$21.05
168%	\$342.27	\$254.68	-\$245.37	\$281.69	\$11.58	\$21.17
169%	\$331.96	\$246.18	-\$150.32	\$391.86	\$11.57	\$21.30
170%	\$321.66	\$237.69	-\$55.27	\$502.03	\$11.55	\$21.42
171%	\$311.35	\$229.20	\$39.78	\$612.21	\$11.54	\$21.55
172%	\$301.04	\$220.70	\$134.83	\$722.38	\$11.52	\$21.68
173%	\$290.74	\$212.21	\$229.88	\$832.56	\$11.51	\$21.80
174%	\$280.43	\$203.72	\$324.93	\$942.73	\$11.49	\$21.93
175%	\$270.12	\$195.23	\$419.98	\$1,052.90	\$11.48	\$22.05

City of Newton
Fiscal Year 2013
Classification Hearing

Impact Calculations on Various Property Classes Using Average and Median Values

<u>AVERAGES</u>	<u>Single Family</u>	<u>Two Family</u>	<u>Commercial</u>	<u>Industrial</u>
FY2012 Value	\$797,671	\$589,417	\$2,098,061	\$2,163,526
FY2012 Tax Rate	\$11.17	\$11.17	\$21.32	\$21.32
FY2012 Tax Bill	\$8,909.99	\$6,583.78	\$44,730.67	\$46,126.37
FY2013 Value	\$805,758	\$589,677	\$2,111,237	\$2,187,984

<u>Shift Selected</u>	<u>% Change Single Family</u>	<u>% Change Two Family</u>	<u>% Change Commercial</u>	<u>% Change Industrial</u>	<u>Residential Tax Rate</u>	<u>Commercial Tax Rate</u>
160%	5.82%	4.80%	-4.83%	-4.35%	\$11.70	\$20.16
161%	5.68%	4.67%	-4.23%	-3.75%	\$11.69	\$20.29
162%	5.55%	4.53%	-3.64%	-3.15%	\$11.67	\$20.42
163%	5.41%	4.40%	-3.04%	-2.56%	\$11.66	\$20.54
164%	5.27%	4.26%	-2.45%	-1.96%	\$11.64	\$20.67
165%	5.14%	4.13%	-1.85%	-1.36%	\$11.63	\$20.79
166%	5.00%	4.00%	-1.26%	-0.76%	\$11.61	\$20.92
167%	4.87%	3.86%	-0.66%	-0.17%	\$11.60	\$21.05
168%	4.73%	3.73%	-0.07%	0.43%	\$11.58	\$21.17
169%	4.60%	3.59%	0.53%	1.03%	\$11.57	\$21.30
170%	4.46%	3.46%	1.12%	1.63%	\$11.55	\$21.42
171%	4.32%	3.32%	1.72%	2.23%	\$11.54	\$21.55
172%	4.19%	3.19%	2.31%	2.82%	\$11.52	\$21.68
173%	4.05%	3.05%	2.91%	3.42%	\$11.51	\$21.80
174%	3.92%	2.92%	3.50%	4.02%	\$11.49	\$21.93
175%	3.78%	2.78%	4.10%	4.62%	\$11.48	\$22.05

<u>MEDIANS</u>	<u>Single Family</u>	<u>Two Family</u>	<u>Commercial</u>	<u>Industrial</u>
FY2012 Value	\$680,500	\$563,200	\$760,500	\$854,950
FY2012 Tax Rate	\$11.17	\$11.17	\$21.32	\$21.32
FY2012 Tax Bill	\$7,601.19	\$6,290.94	\$16,213.86	\$18,227.53
FY2013 Value	\$685,900	\$565,200	\$754,200	\$874,200

<u>Shift Selected</u>	<u>% Change Single Family</u>	<u>% Change Two Family</u>	<u>% Change Commercial</u>	<u>% Change Industrial</u>	<u>Residential Tax Rate</u>	<u>Commercial Tax Rate</u>
160%	5.59%	5.13%	-6.20%	-3.29%	\$11.70	\$20.16
161%	5.45%	4.99%	-5.62%	-2.69%	\$11.69	\$20.29
162%	5.32%	4.86%	-5.03%	-2.08%	\$11.67	\$20.42
163%	5.18%	4.72%	-4.44%	-1.48%	\$11.66	\$20.54
164%	5.05%	4.59%	-3.86%	-0.87%	\$11.64	\$20.67
165%	4.91%	4.45%	-3.27%	-0.27%	\$11.63	\$20.79
166%	4.77%	4.32%	-2.69%	0.34%	\$11.61	\$20.92
167%	4.64%	4.18%	-2.10%	0.94%	\$11.60	\$21.05
168%	4.50%	4.05%	-1.51%	1.55%	\$11.58	\$21.17
169%	4.37%	3.91%	-0.93%	2.15%	\$11.57	\$21.30
170%	4.23%	3.78%	-0.34%	2.75%	\$11.55	\$21.42
171%	4.10%	3.64%	0.25%	3.36%	\$11.54	\$21.55
172%	3.96%	3.51%	0.83%	3.96%	\$11.52	\$21.68
173%	3.82%	3.37%	1.42%	4.57%	\$11.51	\$21.80
174%	3.69%	3.24%	2.00%	5.17%	\$11.49	\$21.93
175%	3.55%	3.10%	2.59%	5.78%	\$11.48	\$22.05

City of Newton
Fiscal Year 2013
Classification Hearing
Historical Levy Amounts and Levy Increases

<u>Fiscal Year</u>	<u>Actual Levy</u>	<u>Amount of Increase</u>	<u>Percent Increase</u>	<u>Residential Share</u>	<u>CIP Share</u>
1982	\$75,151,698	N/A	N/A	75.0917%	24.9083%
1983	\$75,171,091	\$19,393	0.0258%	76.6858%	23.3142%
1984	\$77,928,599	\$2,757,508	3.6683%	73.3129%	26.6871%
1985	\$79,876,814	\$1,948,215	2.5000%	73.7441%	26.2559%
1986	\$82,325,631	\$2,448,817	3.0657%	73.2496%	26.7504%
1987	\$86,340,425	\$4,014,794	4.8767%	73.4089%	26.5911%
1988	\$89,629,586	\$3,289,161	3.8095%	72.7148%	27.2852%
1989	\$95,581,274	\$5,951,688	6.6403%	72.2189%	27.7811%
1990	\$105,205,222	\$9,623,948	10.0689%	72.3140%	27.6860%
1991	\$108,838,759	\$3,633,537	3.4538%	72.5684%	27.4316%
1992	\$112,689,184	\$3,850,425	3.5377%	72.7117%	27.2883%
1993	\$116,941,920	\$4,252,736	3.7739%	74.9205%	25.0795%
1994	\$121,079,222	\$4,137,302	3.5379%	75.0179%	24.9821%
1995	\$125,293,531	\$4,214,309	3.4806%	75.6575%	24.3425%
1996	\$129,682,983	\$4,389,452	3.5033%	76.9124%	23.0876%
1997	\$134,082,167	\$4,399,184	3.3923%	77.7435%	22.2565%
1998	\$138,934,388	\$4,852,221	3.6188%	78.4214%	21.5786%
1999	\$144,105,992	\$5,171,604	3.7223%	78.8086%	21.1914%
2000	\$149,411,520	\$5,305,528	3.6817%	79.7915%	20.2085%
2001	\$156,140,737	\$6,729,217	4.5038%	80.4603%	19.5397%
2002	\$162,278,416	\$6,137,679	3.9309%	81.0536%	18.9464%
2003	\$180,174,491	\$17,896,075	11.0280%	80.9189%	19.0811%
2004	\$187,384,724	\$7,210,233	4.0018%	82.2193%	17.7807%
2005	\$194,189,921	\$6,805,197	3.6317%	83.2145%	16.7855%
2006	\$201,238,041	\$7,048,120	3.6295%	83.8966%	16.1034%
2007	\$208,504,128	\$7,266,087	3.6107%	84.0340%	15.9660%
2008	\$215,828,884	\$7,324,756	3.5130%	83.0740%	16.9260%
2009	\$224,896,509	\$9,067,625	4.2013%	82.6368%	17.3632%
2010	\$233,300,284	\$8,403,775	3.7367%	82.0356%	17.9644%
2011	\$241,707,854	\$8,407,570	3.6038%	81.6880%	18.3120%
2012	\$250,781,839	\$9,073,985	3.7541%	81.4038%	18.5962%
Estimate 2013	\$260,189,736	\$9,407,897	3.7514%		

Please note: Fiscal Year 2003 had an \$11,500,000 voter-approved Proposition 2 1/2 Override.

**City of Newton
Fiscal Year 2013
Classification Hearing**

**Assessments Increases (Decreases)
And
Their Impact on Tax Increases (Decreases)**

The Massachusetts General Laws mandate assessed values represent “Full and Fair Cash Value” as of a particular date. For Fiscal Year 2013, the valuation date is January 1, 2012. The increase (or decrease) in assessed values from the previous fiscal year does not impact the tax increase (or decrease) that a typical property owner receives. The tax increase (or decrease) is strictly driven by the budgetary requirements of the City, as determined by the Mayor and the Newton Board of Aldermen.

For example, in the current Fiscal Year 2013 proposed valuations, there is approximately a **1.10% increase** in residential single-family valuations. Assuming a 174% shift selected by the Board of Aldermen, the result is a tax **increase** of \$348.90, or 3.92% on the average single-family property. To illustrate how the change in assessments does not impact the tax increase or decrease, please see the example below.

Change in Overall Assessed Values	Increase in Tax for Fiscal Year 2013	Increase in %Tax for Fiscal Year 2013
Increase of 1%	\$348.90	3.92%
Increase of 50%	\$348.90	3.92%
Increase of 100%	\$348.90	3.92%
Decrease of 50%	\$348.90	3.92%
Decrease of 100%	\$348.90	3.92%

As can be seen, rising (or falling) assessed values do not mean rising (or falling) tax bills. The increase (or decrease) in taxes seen by the property owner is a direct result of the increase (or decrease) in the budget. The budget increase (or decrease) determines the tax increase (or decrease). Regardless of any overall valuation increase (or decrease), the average single family home would have seen an increase in their tax bill of \$348.90 (assuming the shift of 174%) because of the budget approved by the Newton Board of Aldermen.

City of Newton
Fiscal Year 2013
Classification Hearing
Historical Tracking of Residential/Commercial Shift
Selected by the Newton Board of Aldermen

Residential Single Family

<u>Fiscal Year</u>	<u>Shift Selected</u>	<u>Mean %%</u>	<u>Mean \$\$</u>	<u>Median %%</u>	<u>Median \$\$</u>
1996	172%	5.40%	\$226.86	5.91%	\$222.27
1997	172%	4.81%	\$213.12	4.75%	\$189.04
1998	172%	4.45%	\$206.36	4.73%	\$197.33
1999	172%	4.25%	\$206.07	3.89%	\$169.90
2000	172%	5.28%	\$266.76	5.47%	\$248.30
2001	172%	5.43%	\$288.87	5.07%	\$242.26
2002	172%	4.55%	\$255.22	3.38%	\$169.68
2003	172%	10.64%	\$623.31	10.42%	\$540.93
2004	174%	5.40%	\$349.77	5.31%	\$304.35
2005	175%	3.18%	\$217.44	1.68%	\$101.15
2006	175%	4.62%	\$325.92	4.42%	\$271.58
2007	175%	3.62%	\$267.07	3.56%	\$228.35
2008	175%	1.84%	\$140.95	0.97%	\$64.41
2009	175%	3.40%	\$264.80	3.38%	\$226.66
2010	175%	3.48%	\$280.12	3.13%	\$216.93
2011	175%	3.26%	\$271.14	2.98%	\$212.71
2012	174%	3.70%	\$317.91	3.36%	\$247.33
Last 5 Years	Increase		\$1,274.92		\$968.04
Last 10 Years	Increase		\$3,058.43		\$2,414.40

Commercial Property

<u>Fiscal Year</u>	<u>Shift Selected</u>	<u>Mean %%</u>	<u>Mean \$\$</u>	<u>Median %%</u>	<u>Median \$\$</u>
1996	172%	0.38%	\$113.56	1.16%	\$153.75
1997	172%	0.30%	\$91.96	-0.17%	-\$18.58
1998	172%	-0.03%	-\$10.52	-0.50%	-\$54.81
1999	172%	3.52%	\$1,072.58	1.63%	\$176.40
2000	172%	-1.69%	-\$532.88	-2.81%	-\$308.98
2001	172%	1.05%	\$325.59	-2.95%	-\$315.54
2002	172%	1.92%	\$602.93	2.36%	\$245.58
2003	172%	11.37%	\$3,630.27	11.03%	\$1,170.70
2004	174%	-4.92%	-\$1,748.98	-6.35%	-\$747.70
2005	175%	-0.61%	-\$206.55	0.96%	\$105.79
2006	175%	0.12%	\$40.62	3.94%	\$438.69
2007	175%	2.65%	\$889.46	3.01%	\$348.20
2008	175%	9.21%	\$3,170.24	12.34%	\$1,468.71
2009	175%	4.22%	\$1,586.70	3.50%	\$467.64
2010	175%	6.54%	\$2,561.06	4.92%	\$681.00
2011	175%	4.96%	\$2,069.54	4.65%	\$674.23
2012	174%	2.26%	\$987.66	6.90%	\$1,046.76
Last 5 Years	Increase		\$10,375.20		\$4,338.34
Last 10 Years	Increase		\$12,980.02		\$5,654.02

Please note for Fiscal Year 2003 there was a voter-approved \$11,500,000 override. This accounts for the majority of the tax increase in Fiscal Year 2003. There was also a 2.5% increase approved by the Newton Board of Aldermen, as well as new growth due to new construction.

City of Newton
Fiscal Year 2013
Classification Hearing

Historical Tax Rates Fiscal Year 1980 to Present

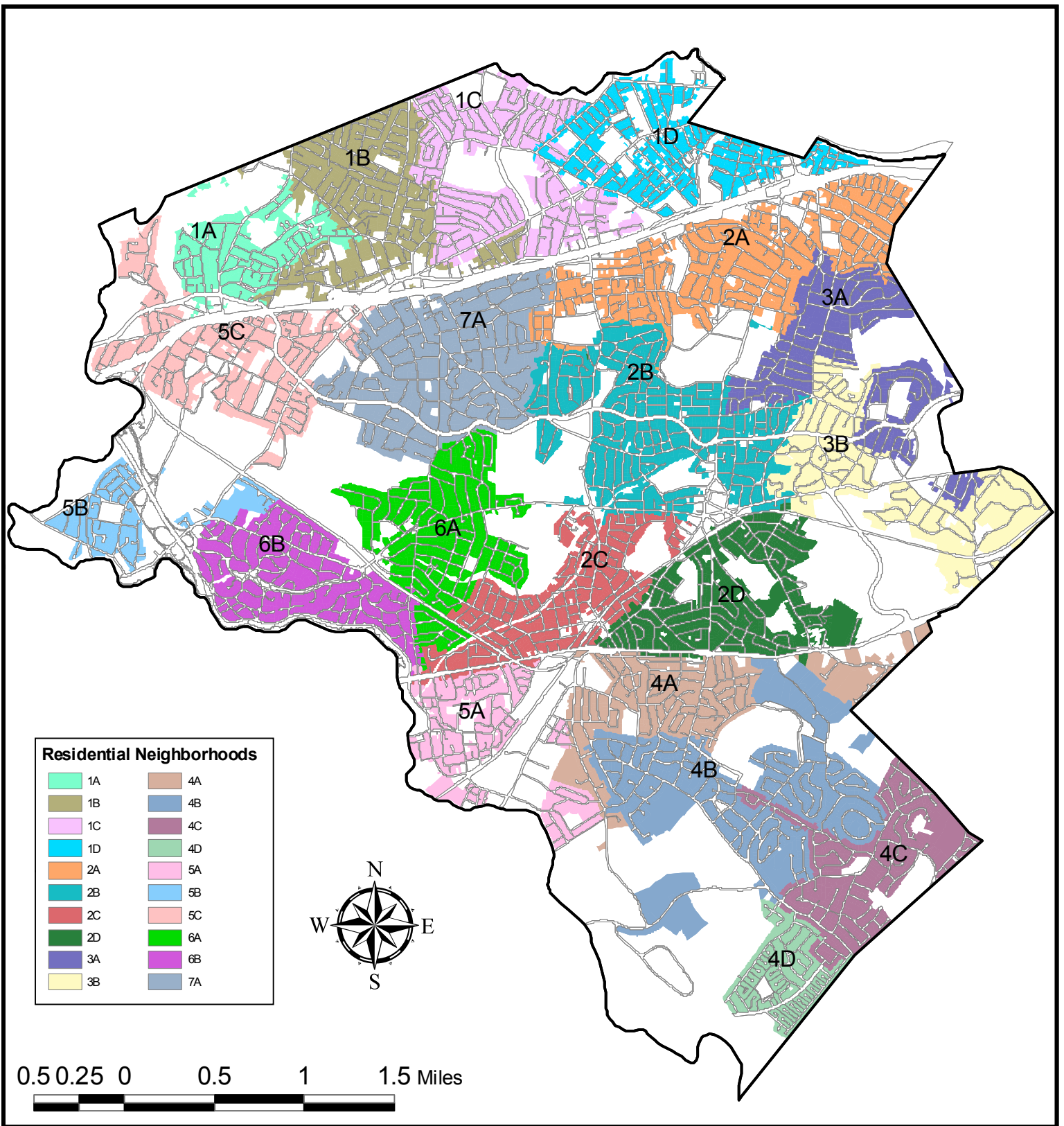
<u>Fiscal Year</u>	<u>Residential</u>	<u>Commercial</u>
1980	\$169.20	\$169.20
1981	\$177.00	\$177.00
1982	\$21.88	\$36.29
1983	\$21.84	\$35.90
1984	\$19.93	\$33.51
1985	\$20.34	\$34.12
1986	\$20.53	\$34.55
1987	\$11.49	\$19.31
1988	\$11.76	\$19.84
1989	\$12.35	\$20.90
1990	\$10.35	\$18.94
1991	\$10.79	\$19.72
1992	\$11.93	\$22.60
1993	\$13.49	\$26.09
1994	\$13.95	\$26.96
1995	\$14.18	\$27.29
1996	\$13.88	\$26.88
1997	\$13.85	\$26.68
1998	\$13.75	\$26.38
1999	\$12.65	\$24.20
2000	\$12.06	\$22.97
2001	\$11.57	\$21.93
2002	\$9.94	\$18.77
2003	\$10.92	\$20.63
2004	\$10.20	\$19.37
2005	\$9.48	\$18.02
2006	\$9.36	\$17.72
2007	\$9.33	\$17.64
2008	\$9.70	\$18.46
2009	\$9.96	\$19.00
2010	\$10.41	\$19.93
2011	\$10.90	\$20.89
2012	\$11.17	\$21.32

City of Newton
Fiscal Year 2013
Classification Hearing
Shift/Tax Rate Table with Residential Factors

<u>C.I.P. %</u>	<u>RES. RATE</u>	<u>RES. % LEVY</u>	<u>COMM. RATE</u>	<u>COMM. % LEVY</u>	<u>RESIDENTIAL FACTOR</u>
100%	\$12.60	89.3472%	\$12.60	10.6528%	100.0000
105%	\$12.53	88.8146%	\$13.23	11.1854%	99.4039
110%	\$12.45	88.2819%	\$13.86	11.7181%	98.8077
115%	\$12.38	87.7493%	\$14.49	12.2507%	98.2116
120%	\$12.30	87.2166%	\$15.12	12.7834%	97.6154
125%	\$12.23	86.6840%	\$15.75	13.3160%	97.0193
130%	\$12.15	86.1514%	\$16.38	13.8486%	96.4231
135%	\$12.08	85.6187%	\$17.01	14.3813%	95.8270
140%	\$12.00	85.0861%	\$17.64	14.9139%	95.2308
145%	\$11.93	84.5534%	\$18.27	15.4466%	94.6347
150%	\$11.85	84.0208%	\$18.90	15.9792%	94.0385
155%	\$11.78	83.4882%	\$19.53	16.5118%	93.4424
160%	\$11.70	82.9555%	\$20.16	17.0445%	92.8462
165%	\$11.63	82.4229%	\$20.79	17.5771%	92.2501
166%	\$11.61	82.3164%	\$20.92	17.6836%	92.1309
167%	\$11.60	82.2098%	\$21.05	17.7902%	92.0116
168%	\$11.58	82.1033%	\$21.17	17.8967%	91.8924
169%	\$11.57	81.9968%	\$21.30	18.0032%	91.7732
170%	\$11.55	81.8902%	\$21.42	18.1098%	91.6539
171%	\$11.54	81.7837%	\$21.55	18.2163%	91.5347
172%	\$11.52	81.6772%	\$21.68	18.3228%	91.4155
173%	\$11.51	81.5707%	\$21.80	18.4293%	91.2962
174%	\$11.49	81.4641%	\$21.93	18.5359%	91.1770
175%	\$11.48	81.3576%	\$22.05	18.6424%	91.0578

City of Newton
Fiscal Year 2013
Classification Hearing
Neighborhood Sales Analysis
Mean and Median Sales Prices

	<u>Assessing District</u>	<u>Median Sale Price</u>	<u>Average Sale Price</u>
1A	Auburndale/West Newton (North of Mass. Pike)	\$535,000	\$609,016
1B	West Newton/Newtonville (North of Mass. Pike)	\$473,000	\$509,026
1C	Newtonville (North of Mass. Pike)	\$580,000	\$613,340
1D	Nonantum	\$424,750	\$439,954
2A	Newtonville (South of Mass. Pike)	\$741,500	\$978,668
2B	Newton Centre (North of Beacon Street)	\$925,000	\$1,092,058
2C	South of Beacon Street to Route 9	\$756,655	\$926,669
2D	Newton Highlands (North of Route 9)	\$712,000	\$766,248
3A	Farlow Hill/North Chestnut Hill	\$1,325,000	\$1,347,087
3B	Chestnut Hill	\$1,200,000	\$1,450,741
4A	South of Route 9	\$560,750	\$649,606
4B	Old Oak Hill	\$900,000	\$1,015,963
4C	South Side/Abutting West Roxbury and Brookline	\$850,000	\$963,221
4D	Oak Hill Park	\$465,000	\$678,268
5A	Upper Falls	\$525,000	\$509,671
5B	Lower Falls	\$565,500	\$608,589
5C	Auburndale (Islington and South of Commonwealth Avenue)	\$690,000	\$682,577
6A	Northeast Waban	\$965,000	\$1,256,958
6B	Southwest Waban	\$907,000	\$1,016,761
7A	West Newton Hill	\$1,350,000	\$1,417,074
	CITYWIDE	\$760,000	\$919,210



City of Newton - Assessor's Residential Neighborhoods

City of Newton, Massachusetts
 Assessing Department
 1000 Commonwealth Avenue
 Newton, MA 02459
 PHONE: (617) 796-1160

Property Boundaries from Newton Assessor's
 property maps. Neighborhood information from
 Assessor's CAMA database.
 Map projection & coordinate system:
 Mass. State Plane - NAD83



MAP DATE: November 20, 2007

City of Newton
Fiscal Year 2013
Classification Hearing
Summary of Calendar Year 2011 Single Family Sales

**Calendar Year 2011
Single Family Sales**

Number of Sales 568

Median Sale Price \$760,000
 (Half the Single Family Homes sold for more than this median sale price)

Average Sale Price \$919,210

Summary of Sale Prices

<u>Less than</u>	<u>Sales</u>	<u>Percent</u>	<u>More than</u>	<u>Sales</u>	<u>Percent</u>
\$400,000	33	5.81%	\$600,000	400	70.42%
<u>Less than</u>	<u>Sales</u>	<u>Percent</u>	<u>More than</u>	<u>Sales</u>	<u>Percent</u>
\$600,000	168	29.58%	\$750,000	302	53.17%
			<u>More than</u>	<u>Sales</u>	<u>Percent</u>
			\$1,000,000	180	31.69%
			<u>More than</u>	<u>Sales</u>	<u>Percent</u>
			\$1,500,000	66	11.62%
			<u>More than</u>	<u>Sales</u>	<u>Percent</u>
			\$2,000,000	25	4.40%

2011 Single Family Sales



Median Sale Price: \$760,000

Average Sale Price: \$919,210



**> \$750,000-302 Sales
(53.17%)**



**> \$1,000,000-180 Sales
(31.69%)**



**> \$1,500,000-66 Sales
(11.62%)**

City of Newton
 Fiscal Year 2013
 Classification Hearing
 Fiscal Year 2012 (Last Year)
 Massachusetts Communities with Top 20 Highest Tax Levies Statewide

<u>Community</u>	<u>Residential</u>	<u>CIP</u>	<u>Total</u>	<u>RES%</u>	<u>CIP%</u>
Boston	\$625,063,442	\$988,965,392	\$1,614,028,834	38.73%	61.27%
Cambridge	\$103,348,315	\$195,742,322	\$299,090,637	34.55%	65.45%
Newton	\$204,153,075	\$46,628,765	\$250,781,840	81.41%	18.59%
Worcester	\$138,514,500	\$90,701,524	\$229,216,024	60.43%	39.57%
Quincy	\$120,172,750	\$53,565,459	\$173,738,209	69.17%	30.83%
Springfield	\$99,920,518	\$69,468,698	\$169,389,216	58.99%	41.01%
Framingham	\$98,528,855	\$65,194,613	\$163,723,468	60.18%	39.82%
Brookline	\$136,876,274	\$26,744,213	\$163,620,487	83.65%	16.35%
Waltham	\$63,569,895	\$87,301,098	\$150,870,993	42.14%	57.86%
Lexington	\$104,414,313	\$29,923,235	\$134,337,548	77.73%	22.27%
Plymouth	\$94,995,600	\$27,157,073	\$122,152,673	77.77%	22.23%
Andover	\$77,098,147	\$31,776,009	\$108,874,156	70.81%	29.19%
Brockton	\$70,768,901	\$37,448,316	\$108,217,217	65.40%	34.60%
Lowell	\$73,935,015	\$33,650,101	\$107,585,116	68.72%	31.28%
Wellesley	\$93,275,333	\$11,762,555	\$105,037,888	88.80%	11.20%
Somerville	\$76,545,901	\$28,219,386	\$104,765,287	73.06%	26.94%
Lynn	\$74,607,028	\$26,434,348	\$101,041,376	73.84%	26.16%
Barnstable	\$86,077,491	\$11,247,888	\$97,325,379	88.44%	11.56%
Billerica	\$56,072,379	\$40,624,619	\$96,696,998	57.99%	42.01%
Needham	\$74,902,426	\$21,344,025	\$96,246,451	77.82%	22.18%

The Tax Levy is the amount of money raised by a vote of the Aldermen, Selectmen or City Council. The City of Newton has the 3rd highest tax levy in the Commonwealth of Massachusetts as voted by the Newton Board of Aldermen for FY2012 (last fiscal year).

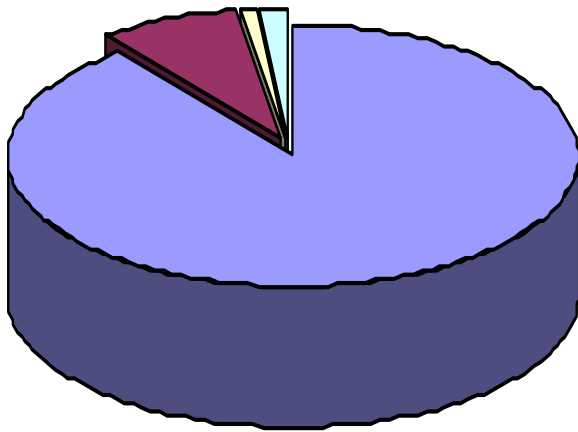
The breakdown between Residential and Commercial, Industrial, and Personal (CIP) classes is determined by the classification selected by the Aldermen, Selectmen or City Council.

City of Newton
Fiscal Year 2013
Classification Hearing
10 Year Median Sale Prices of Single Family Homes

<u>Calendar Year</u>	<u>Median Sale Price</u>
2003	\$672,500
2004	\$725,000
2005	\$747,000
2006	\$738,250
2007	\$763,000
2008	\$755,000
2009	\$705,750
2010	\$737,750
2011	\$752,000
2012	\$800,000

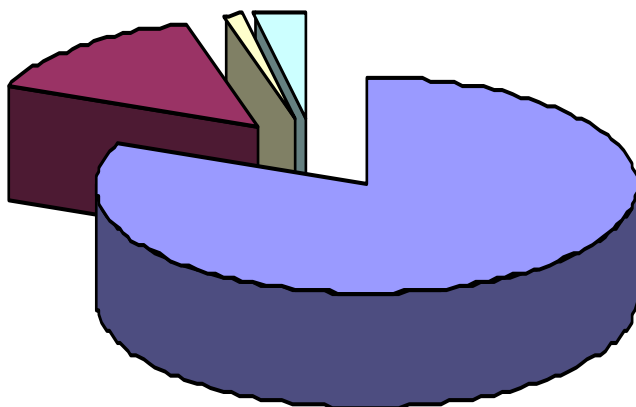
2012 is through August 31, 2012

City of Newton FY2013 Property Valuation by Class



- Residential (89.35%)
- Commercial (8.22%)
- Industrial (0.73%)
- Personal (1.7%)

Property Taxation Assuming 174% SHIFT (Same shift as FY2012)



- Residential (81.46%)
- Commercial (14.3%)
- Industrial (1.27%)
- Personal (2.96%)

City of Newton
Fiscal Year 2013
Classification Hearing
Summary Sheet

FY2012 Levy Limit	\$250,798,454
2.5% Increase	\$6,269,961
New Growth	\$3,121,321
FY2013 Levy Limit	\$260,189,736

Tax Increase Approved \$9,391,282

Shift Selected **175%** **174%** **173%** **172%** **171%** **170%**

Rounded Tax Rates (Estimated)

Residential Tax Rate	\$11.48	\$11.49	\$11.51	\$11.52	\$11.54	\$11.55
Commercial Tax Rate	\$22.05	\$21.93	\$21.80	\$21.68	\$21.55	\$21.42

Tax Dollar Increases

Median Single Family Tax Increase	\$270.12	\$280.43	\$290.74	\$301.04	\$311.35	\$321.66
Median Two Family Tax Increase	\$195.23	\$203.72	\$212.21	\$220.70	\$229.20	\$237.69
Median Commercial Tax Increase	\$419.98	\$324.93	\$229.88	\$134.83	\$39.78	-\$55.27
Median Industrial Tax Increase	\$1,052.90	\$942.73	\$832.56	\$722.38	\$612.21	\$502.03

Tax Dollar % Increases

Median Single Family Tax Increase %	3.55%	3.69%	3.82%	3.96%	4.10%	4.23%
Median Two Family Tax Increase %	3.10%	3.24%	3.37%	3.51%	3.64%	3.78%
Median Commercial Tax Increase %	2.59%	2.00%	1.42%	0.83%	0.25%	-0.34%
Median Industrial Tax Increase %	5.78%	5.17%	4.57%	3.96%	3.36%	2.75%

Shift Selected	175%	174%	173%	172%	171%	170%
Residential Factor	91.0578	91.1770	91.2963	91.4155	91.5347	91.6539
Excess Levy Capacity	\$141,396.53	\$14,400.35	\$137,843.37	\$10,847.18	\$134,290.21	\$29,287.11

Tax Rates - Pending DOR Approval

Residential Tax Rate	\$11.47	\$11.49	\$11.50	\$11.52	\$11.53	\$11.55
Commercial Tax Rate	\$22.04	\$21.93	\$21.79	\$21.68	\$21.54	\$21.42

Changed

	Median Single Family Change	Median Commercial Change
Historical Shift Prior 5 Years		
2008	175% \$64.41	\$1,468.71
2009	175% \$226.66	\$467.64
2010	175% \$216.93	\$681.00
2011	175% \$212.71	\$674.23
2012	174% \$247.33	\$1,046.76

City of Newton
Fiscal Year 2013
Classification Hearing
December 3, 2012

Supplement 1

Statewide Average Single Family Tax Bills

And

Statewide Residential Tax Rates

(Information from Massachusetts Department of
Revenue Division of Local Services)

FY2012 (Last Year) Average Single Family Tax Bills STATEWIDE
(Information from Massachusetts DOR)

Community	Value	Parcels	Average	Rate	Taxes	Rank
Weston	\$4,597,141,500	3,345	\$1,374,332	\$12.11	\$16,643	1
Sherborn	\$985,677,900	1,327	\$742,787	\$18.22	\$13,534	2
Lincoln	\$1,454,699,400	1,508	\$964,655	\$13.81	\$13,322	3
Dover	\$1,833,593,500	1,764	\$1,039,452	\$11.92	\$12,390	4
Carlisle	\$1,144,166,200	1,648	\$694,276	\$17.14	\$11,900	5
Wellesley	\$7,523,162,000	7,282	\$1,033,118	\$11.48	\$11,860	6
Concord	\$3,889,030,000	4,567	\$851,550	\$13.58	\$11,564	7
Wayland	\$2,394,144,300	4,037	\$593,050	\$19.01	\$11,274	8
Sudbury	\$3,346,911,700	5,386	\$621,410	\$17.60	\$10,937	9
Lexington	\$6,251,243,000	8,963	\$697,450	\$14.97	\$10,441	10
Cohasset	\$1,951,313,000	2,292	\$851,358	\$11.98	\$10,199	11
Manchester By The Sea	\$1,553,242,900	1,551	\$1,001,446	\$10.11	\$10,125	12
Belmont	\$3,371,240,000	4,517	\$746,345	\$13.35	\$9,964	13
Winchester	\$4,267,720,000	5,604	\$761,549	\$12.55	\$9,557	14
Wenham	\$577,201,714	1,089	\$530,029	\$17.89	\$9,482	15
Acton	\$2,440,410,000	4,889	\$499,163	\$18.55	\$9,259	16
Boxborough	\$595,535,800	1,172	\$508,136	\$17.87	\$9,080	17
Bolton	\$717,826,000	1,574	\$456,052	\$19.78	\$9,021	18
Westwood	\$2,786,741,900	4,474	\$622,875	\$14.48	\$9,019	19
Newton	\$13,517,337,500	16,946	\$797,671	\$11.17	\$8,910	20
Harvard	\$909,100,400	1,666	\$545,679	\$16.24	\$8,862	21
Medfield	\$1,957,042,200	3,494	\$560,115	\$15.73	\$8,811	22
Swampscott	\$1,596,658,100	3,429	\$465,634	\$17.99	\$8,377	23
Southborough	\$1,444,261,500	2,797	\$516,361	\$16.14	\$8,334	24
Sharon	\$2,168,739,500	5,248	\$413,251	\$20.11	\$8,310	25
Hopkinton	\$2,027,459,928	4,277	\$474,038	\$17.05	\$8,082	26
Needham	\$6,158,330,400	8,351	\$737,436	\$10.95	\$8,075	27
Boxford	\$1,504,042,200	2,642	\$569,282	\$14.09	\$8,021	28
Hamilton	\$1,080,555,800	2,343	\$461,185	\$17.32	\$7,988	29
Bedford	\$1,720,152,900	3,319	\$518,274	\$15.21	\$7,883	30
Topsfield	\$938,002,100	1,848	\$507,577	\$15.45	\$7,842	31
Westborough	\$1,556,827,800	3,839	\$405,530	\$19.21	\$7,790	32
Andover	\$4,677,413,100	8,501	\$550,219	\$14.15	\$7,786	33
Norwell	\$1,783,892,600	3,293	\$541,723	\$14.24	\$7,714	34
Stow	\$882,774,400	2,057	\$429,156	\$17.90	\$7,682	35
Duxbury	\$2,683,900,600	4,819	\$556,941	\$13.79	\$7,680	36
Hingham	\$3,963,099,200	6,160	\$643,360	\$11.89	\$7,650	37

FY2012 (Last Year) Average Single Family Tax Bills STATEWIDE
(Information from Massachusetts DOR)

Community	Value	Parcels	Average	Rate	Taxes	Rank
Lynnfield	\$1,973,376,275	3,813	\$517,539	\$14.26	\$7,380	38
Milton	\$3,634,448,600	7,124	\$510,170	\$14.35	\$7,321	39
Essex	\$483,780,200	986	\$490,649	\$14.39	\$7,060	40
Marblehead	\$4,082,070,900	6,172	\$661,385	\$10.52	\$6,958	41
Longmeadow	\$1,919,626,100	5,444	\$352,613	\$19.68	\$6,939	42
Norfolk	\$1,223,008,100	2,908	\$420,567	\$16.47	\$6,927	43
Holliston	\$1,610,787,000	4,267	\$377,499	\$18.32	\$6,916	44
Westford	\$2,794,232,900	6,296	\$443,811	\$15.55	\$6,901	45
West Newbury	\$602,788,900	1,326	\$454,592	\$14.83	\$6,742	46
Arlington	\$3,836,136,600	7,982	\$480,598	\$13.66	\$6,565	47
North Reading	\$1,893,715,800	4,207	\$450,134	\$14.38	\$6,473	48
Groton	\$1,241,345,280	3,110	\$399,146	\$16.08	\$6,418	49
North Andover	\$2,827,604,000	6,198	\$456,212	\$13.92	\$6,350	50
Amherst	\$1,303,208,700	4,088	\$318,789	\$19.74	\$6,293	51
Reading	\$2,895,475,600	6,514	\$444,500	\$14.15	\$6,290	52
Hanover	\$1,717,342,100	4,118	\$417,033	\$15.00	\$6,255	53
Middleton	\$944,580,300	1,962	\$481,437	\$12.81	\$6,167	54
Northborough	\$1,581,989,200	4,008	\$394,708	\$15.49	\$6,114	55
Medway	\$1,265,266,251	3,623	\$349,232	\$17.48	\$6,105	56
Natick	\$3,665,889,700	8,478	\$432,400	\$13.91	\$6,015	57
Littleton	\$1,047,757,000	2,827	\$370,625	\$16.08	\$5,960	58
Ashland	\$1,335,332,500	3,714	\$359,540	\$16.57	\$5,958	59
Pelham	\$141,182,300	466	\$302,966	\$19.64	\$5,950	60
Scituate	\$3,178,203,000	6,648	\$478,069	\$12.34	\$5,899	61
Amesbury	\$1,037,311,400	3,389	\$306,082	\$19.13	\$5,855	62
Dunstable	\$398,583,000	1,023	\$389,622	\$14.88	\$5,798	63
Framingham	\$4,556,448,100	13,368	\$340,847	\$16.94	\$5,774	64
Dedham	\$2,456,186,900	6,568	\$373,963	\$15.43	\$5,770	65
Maynard	\$823,517,500	2,642	\$311,702	\$18.45	\$5,751	66
Walpole	\$2,579,241,700	6,354	\$405,924	\$14.14	\$5,740	67
Boylston	\$455,220,900	1,357	\$335,461	\$17.02	\$5,710	68
Newburyport	\$1,904,677,000	4,278	\$445,226	\$12.80	\$5,699	69
Chelmsford	\$2,914,600,475	9,017	\$323,234	\$17.49	\$5,653	70
Easton	\$2,095,473,500	5,553	\$377,359	\$14.95	\$5,642	71
Upton	\$824,044,900	2,200	\$374,566	\$15.03	\$5,630	72
Berlin	\$304,036,714	788	\$385,833	\$14.47	\$5,583	73
Ipswich	\$1,629,265,570	3,752	\$434,239	\$12.77	\$5,545	74

FY2012 (Last Year) Average Single Family Tax Bills STATEWIDE
(Information from Massachusetts DOR)

Community	Value	Parcels	Average	Rate	Taxes	Rank
Nahant	\$591,880,500	1,127	\$525,182	\$10.55	\$5,541	75
Canton	\$2,466,667,200	5,316	\$464,008	\$11.91	\$5,526	76
Marion	\$1,243,024,000	2,185	\$568,890	\$9.71	\$5,524	77
Gloucester	\$3,246,617,500	7,174	\$452,553	\$12.18	\$5,512	78
Wrentham	\$1,229,708,000	3,241	\$379,422	\$14.43	\$5,475	79
Beverly	\$3,518,774,100	8,397	\$419,051	\$12.97	\$5,435	80
Provincetown	\$628,439,100	834	\$753,524	\$7.20	\$5,425	81
Leverett	\$194,711,900	644	\$302,348	\$17.77	\$5,373	82
Williamstown	\$699,026,100	1,857	\$376,428	\$13.98	\$5,262	83
Mattapoissett	\$1,263,662,200	2,855	\$442,614	\$11.85	\$5,245	84
Wilbraham	\$1,334,045,000	4,598	\$290,136	\$18.05	\$5,237	85
Lancaster	\$585,246,300	2,007	\$291,603	\$17.94	\$5,231	86
Millis	\$719,345,300	2,132	\$337,404	\$15.49	\$5,226	87
Foxborough	\$1,595,863,400	4,235	\$376,827	\$13.73	\$5,174	88
Mansfield	\$1,917,875,300	5,307	\$361,386	\$14.29	\$5,164	89
Rockport	\$1,201,437,600	2,346	\$512,122	\$10.05	\$5,147	90
Plympton	\$281,742,100	892	\$315,854	\$16.25	\$5,133	91
Kingston	\$1,245,996,100	3,733	\$333,779	\$15.33	\$5,117	92
Mendon	\$638,322,300	1,801	\$354,427	\$14.42	\$5,111	93
Princeton	\$366,189,300	1,210	\$302,636	\$16.84	\$5,096	94
Melrose	\$2,522,739,555	6,320	\$399,168	\$12.76	\$5,093	95
Rowley	\$592,999,900	1,622	\$365,598	\$13.92	\$5,089	96
Georgetown	\$920,477,010	2,423	\$379,891	\$13.09	\$4,973	97
Paxton	\$410,613,800	1,507	\$272,471	\$18.16	\$4,948	98
West Tisbury	\$1,452,817,200	1,449	\$1,002,634	\$4.92	\$4,933	99
Great Barrington	\$786,518,500	2,100	\$374,533	\$13.12	\$4,914	100
Stoneham	\$1,967,873,900	5,056	\$389,216	\$12.61	\$4,908	101
Danvers	\$2,135,692,100	6,092	\$350,573	\$13.93	\$4,883	102
Aquinnah	\$473,311,149	382	\$1,239,034	\$3.93	\$4,869	103
Franklin	\$2,682,632,300	7,607	\$352,653	\$13.73	\$4,842	104
Tyngsborough	\$983,501,800	3,108	\$316,442	\$15.29	\$4,838	105
Shutesbury	\$193,976,800	785	\$247,104	\$19.56	\$4,833	106
East Bridgewater	\$1,130,080,800	3,674	\$307,589	\$15.63	\$4,808	107
East Longmeadow	\$1,347,169,300	5,311	\$253,656	\$18.85	\$4,781	108
Grafton	\$1,424,353,500	4,218	\$337,685	\$14.13	\$4,771	109
Merrimac	\$497,044,100	1,588	\$313,000	\$15.24	\$4,770	110
Wakefield	\$2,485,448,900	6,202	\$400,750	\$11.90	\$4,769	111

FY2012 (Last Year) Average Single Family Tax Bills STATEWIDE
(Information from Massachusetts DOR)

Community	Value	Parcels	Average	Rate	Taxes	Rank
Halifax	\$600,747,600	2,118	\$283,639	\$16.80	\$4,765	112
Tewksbury	\$2,343,199,300	7,425	\$315,582	\$14.93	\$4,712	113
Hull	\$1,354,387,200	3,759	\$360,305	\$13.06	\$4,706	114
Bridgewater	\$1,611,935,000	5,223	\$308,622	\$15.11	\$4,663	115
Westhampton	\$179,135,700	635	\$282,103	\$16.40	\$4,626	116
West Stockbridge	\$284,878,600	686	\$415,275	\$11.12	\$4,618	117
Plainville	\$629,381,200	1,910	\$329,519	\$13.99	\$4,610	118
Sutton	\$900,490,500	2,840	\$317,074	\$14.53	\$4,607	119
Abington	\$1,114,967,400	3,723	\$299,481	\$15.36	\$4,600	120
Salem	\$1,418,841,600	4,828	\$293,878	\$15.63	\$4,593	121
Groveland	\$648,716,600	1,842	\$352,181	\$12.98	\$4,571	122
Winthrop	\$718,491,700	2,281	\$314,990	\$14.49	\$4,564	123
Sturbridge	\$771,073,950	2,986	\$258,230	\$17.63	\$4,553	124
Sterling	\$728,899,000	2,510	\$290,398	\$15.65	\$4,545	125
Pembroke	\$1,687,995,680	5,168	\$326,625	\$13.91	\$4,543	126
Sandwich	\$2,963,411,995	8,362	\$354,390	\$12.74	\$4,515	127
Hampden	\$477,817,200	1,788	\$267,236	\$16.87	\$4,508	128
Hopedale	\$447,780,090	1,477	\$303,169	\$14.86	\$4,505	129
Hudson	\$1,264,433,100	4,373	\$289,145	\$15.51	\$4,485	130
Marshfield	\$3,425,780,500	8,993	\$380,939	\$11.76	\$4,480	131
Quincy	\$4,446,877,500	13,656	\$325,635	\$13.75	\$4,477	132
Newbury	\$938,062,100	2,320	\$404,337	\$11.07	\$4,476	133
Marlborough	\$2,105,395,800	6,962	\$302,412	\$14.80	\$4,476	134
Burlington	\$2,496,400,100	6,548	\$381,246	\$11.55	\$4,403	135
Holden	\$1,479,904,600	5,558	\$266,266	\$16.53	\$4,401	136
Uxbridge	\$959,928,700	3,298	\$291,064	\$15.10	\$4,395	137
Billerica	\$3,369,255,000	10,742	\$313,652	\$13.92	\$4,366	138
Lenox	\$621,335,000	1,594	\$389,796	\$11.17	\$4,354	139
West Boylston	\$503,771,200	1,947	\$258,742	\$16.81	\$4,349	140
Wilmington	\$2,474,166,790	6,916	\$357,745	\$12.14	\$4,343	141
Milford	\$1,544,363,500	5,777	\$267,330	\$16.17	\$4,323	142
West Bridgewater	\$560,791,200	1,994	\$281,239	\$15.36	\$4,320	143
Raynham	\$1,079,247,300	3,561	\$303,074	\$14.24	\$4,316	144
Rochester	\$569,303,800	1,689	\$337,066	\$12.80	\$4,314	145
Holbrook	\$739,362,400	3,141	\$235,391	\$18.21	\$4,286	146
Truro	\$1,449,250,100	2,024	\$716,033	\$5.97	\$4,275	147
Oak Bluffs	\$1,904,992,840	3,294	\$578,322	\$7.39	\$4,274	148

FY2012 (Last Year) Average Single Family Tax Bills STATEWIDE
(Information from Massachusetts DOR)

Community	Value	Parcels	Average	Rate	Taxes	Rank
Plymouth	\$5,514,803,300	17,858	\$308,814	\$13.84	\$4,274	149
Williamsburg	\$197,301,000	724	\$272,515	\$15.49	\$4,221	150
Orleans	\$2,664,442,500	3,732	\$713,945	\$5.91	\$4,219	151
Conway	\$176,199,400	597	\$295,141	\$14.21	\$4,194	152
Whately	\$132,920,648	504	\$263,731	\$15.85	\$4,180	153
Medford	\$2,728,570,100	7,854	\$347,412	\$12.03	\$4,179	154
Lunenburg	\$849,778,800	3,426	\$248,038	\$16.83	\$4,174	155
Shrewsbury	\$3,389,541,500	9,098	\$372,559	\$11.11	\$4,139	156
Sheffield	\$419,210,500	1,313	\$319,277	\$12.84	\$4,100	157
Rockland	\$965,674,500	3,730	\$258,894	\$15.81	\$4,093	158
Blackstone	\$487,924,300	2,023	\$241,188	\$16.92	\$4,081	159
Northampton	\$1,690,761,300	5,554	\$304,422	\$13.35	\$4,064	160
Carver	\$800,842,600	3,059	\$261,799	\$15.47	\$4,050	161
Richmond	\$309,268,600	741	\$417,367	\$9.70	\$4,048	162
Belchertown	\$1,030,200,300	4,224	\$243,892	\$16.56	\$4,039	163
Randolph	\$1,786,519,900	7,123	\$250,810	\$16.03	\$4,020	164
Pepperell	\$902,880,540	3,067	\$294,386	\$13.59	\$4,001	165
Westminster	\$592,157,000	2,559	\$231,402	\$17.24	\$3,989	166
Stoughton	\$1,787,584,600	6,514	\$274,422	\$14.50	\$3,979	167
Hanson	\$972,329,900	3,112	\$312,445	\$12.73	\$3,977	168
Townsend	\$655,920,200	2,802	\$234,090	\$16.96	\$3,970	169
Shirley	\$382,591,480	1,444	\$264,953	\$14.98	\$3,969	170
Chilmark	\$2,026,155,196	1,062	\$1,907,867	\$2.08	\$3,968	171
Norton	\$1,277,072,770	4,373	\$292,036	\$13.54	\$3,954	172
New Braintree	\$73,412,200	299	\$245,526	\$15.96	\$3,919	173
North Attleborough	\$2,148,935,400	6,747	\$318,502	\$12.23	\$3,895	174
Edgartown	\$3,829,706,300	3,384	\$1,131,710	\$3.43	\$3,882	175
Rehoboth	\$1,321,362,300	3,748	\$352,551	\$10.97	\$3,867	176
Whitman	\$873,354,896	3,302	\$264,493	\$14.62	\$3,867	177
Norwood	\$2,124,006,700	5,818	\$365,075	\$10.58	\$3,862	178
Mashpee	\$3,073,962,400	6,825	\$450,397	\$8.51	\$3,833	179
Dighton	\$589,417,200	2,114	\$278,816	\$13.67	\$3,811	180
Haverhill	\$2,626,751,300	10,261	\$255,994	\$14.76	\$3,778	181
Stockbridge	\$538,429,400	1,091	\$493,519	\$7.63	\$3,766	182
Leyden	\$58,030,100	257	\$225,798	\$16.68	\$3,766	183
Southampton	\$549,387,900	2,045	\$268,649	\$14.01	\$3,764	184
Braintree	\$3,241,506,800	9,012	\$359,688	\$10.45	\$3,759	185

FY2012 (Last Year) Average Single Family Tax Bills STATEWIDE
(Information from Massachusetts DOR)

Community	Value	Parcels	Average	Rate	Taxes	Rank
Ashburnham	\$489,817,400	2,391	\$204,859	\$18.34	\$3,757	186
Westfield	\$2,161,786,100	9,331	\$231,678	\$16.13	\$3,737	187
Rutland	\$604,193,900	2,475	\$244,119	\$15.30	\$3,735	188
Middleborough	\$1,452,480,885	5,365	\$270,733	\$13.74	\$3,720	189
West Springfield	\$1,382,448,400	6,452	\$214,267	\$17.25	\$3,696	190
Berkley	\$635,165,800	1,997	\$318,060	\$11.60	\$3,689	191
Heath	\$62,630,000	337	\$185,846	\$19.84	\$3,687	192
Lanesborough	\$258,953,500	1,204	\$215,078	\$17.08	\$3,674	193
Lynn	\$2,587,078,900	11,477	\$225,414	\$16.28	\$3,670	194
Douglas	\$668,642,400	2,588	\$258,363	\$14.18	\$3,664	195
Petersham	\$110,492,200	468	\$236,094	\$15.51	\$3,662	196
Falmouth	\$8,533,651,300	18,158	\$469,966	\$7.78	\$3,656	197
Southwick	\$771,878,900	3,004	\$256,950	\$14.23	\$3,656	198
Russell	\$104,229,720	526	\$198,155	\$18.40	\$3,646	199
Leominster	\$1,747,017,100	8,024	\$217,724	\$16.72	\$3,640	200
Granby	\$464,194,100	2,032	\$228,442	\$15.87	\$3,625	201
Seekonk	\$1,402,237,800	4,726	\$296,707	\$12.19	\$3,617	202
Ludlow	\$1,247,940,500	5,865	\$212,778	\$16.98	\$3,613	203
Avon	\$340,066,400	1,279	\$265,885	\$13.58	\$3,611	204
Millville	\$222,285,500	811	\$274,088	\$13.17	\$3,610	205
Bellingham	\$1,157,491,425	4,531	\$255,460	\$14.05	\$3,589	206
Dalton	\$402,557,100	1,953	\$206,122	\$17.41	\$3,589	207
Saugus	\$2,319,113,600	7,135	\$325,033	\$11.04	\$3,588	208
Harwich	\$3,702,619,400	8,385	\$441,577	\$8.12	\$3,586	209
Dracut	\$2,058,517,500	7,428	\$277,129	\$12.93	\$3,583	210
Revere	\$1,052,708,700	4,441	\$237,043	\$15.07	\$3,572	211
Sunderland	\$208,128,500	756	\$275,302	\$12.97	\$3,571	212
Ayer	\$400,335,000	1,474	\$271,598	\$13.10	\$3,558	213
Woburn	\$2,717,786,800	7,953	\$341,731	\$10.40	\$3,554	214
Peabody	\$3,262,365,200	10,853	\$300,596	\$11.82	\$3,553	215
Bourne	\$2,980,528,140	7,656	\$389,306	\$9.12	\$3,550	216
Auburn	\$1,099,438,200	4,975	\$220,993	\$16.05	\$3,547	217
Weymouth	\$3,818,173,600	13,089	\$291,709	\$12.14	\$3,541	218
Chatham	\$4,534,960,100	5,707	\$794,631	\$4.45	\$3,536	219
Brookfield	\$194,560,696	906	\$214,747	\$16.45	\$3,533	220
Lakeville	\$1,113,887,500	3,756	\$296,562	\$11.85	\$3,514	221
Greenfield	\$713,580,457	3,860	\$184,865	\$19.01	\$3,514	222

FY2012 (Last Year) Average Single Family Tax Bills STATEWIDE
(Information from Massachusetts DOR)

Community	Value	Parcels	Average	Rate	Taxes	Rank
Montgomery	\$79,220,000	325	\$243,754	\$14.39	\$3,508	223
Methuen	\$2,865,172,570	10,664	\$268,677	\$13.04	\$3,504	224
Ashby	\$228,627,100	1,077	\$212,281	\$16.42	\$3,486	225
Ashfield	\$140,583,200	593	\$237,071	\$14.69	\$3,483	226
Bernardston	\$159,513,300	737	\$216,436	\$16.08	\$3,480	227
Wellfleet	\$1,719,024,990	3,028	\$567,710	\$6.12	\$3,474	228
Deerfield	\$382,046,000	1,411	\$270,763	\$12.82	\$3,471	229
South Hadley	\$1,007,624,900	4,303	\$234,168	\$14.73	\$3,449	230
Salisbury	\$635,753,800	2,028	\$313,488	\$10.97	\$3,439	231
Chesterfield	\$110,237,300	514	\$214,469	\$15.97	\$3,425	232
Hawley	\$29,615,900	141	\$210,042	\$16.30	\$3,424	233
Northbridge	\$886,803,700	3,351	\$264,639	\$12.81	\$3,390	234
Freetown	\$809,829,700	2,904	\$278,867	\$12.12	\$3,380	235
Millbury	\$750,200,400	3,425	\$219,037	\$15.42	\$3,378	236
Lee	\$447,468,200	1,815	\$246,539	\$13.67	\$3,370	237
Brimfield	\$295,308,800	1,271	\$232,344	\$14.48	\$3,364	238
Worcester	\$4,928,350,790	24,883	\$198,061	\$16.98	\$3,363	239
Brewster	\$2,467,125,260	5,476	\$450,534	\$7.44	\$3,352	240
Attleboro	\$2,433,954,700	9,384	\$259,373	\$12.88	\$3,341	241
Acushnet	\$851,324,800	3,211	\$265,128	\$12.47	\$3,306	242
Clinton	\$501,169,470	2,339	\$214,267	\$15.28	\$3,274	243
Granville	\$155,114,500	573	\$270,706	\$12.02	\$3,254	244
Monson	\$566,796,570	2,616	\$216,665	\$14.96	\$3,241	245
Lowell	\$2,583,893,000	11,793	\$219,104	\$14.77	\$3,236	246
East Brookfield	\$175,429,700	774	\$226,653	\$14.22	\$3,223	247
New Marlborough	\$312,497,100	857	\$364,641	\$8.77	\$3,198	248
Hadley	\$508,562,900	1,637	\$310,668	\$10.22	\$3,175	249
Charlemont	\$79,866,200	406	\$196,715	\$16.11	\$3,169	250
Hatfield	\$292,379,000	994	\$294,144	\$10.73	\$3,156	251
Agawam	\$1,680,002,900	7,681	\$218,722	\$14.40	\$3,150	252
Dartmouth	\$3,447,697,600	9,722	\$354,628	\$8.87	\$3,146	253
Worthington	\$109,236,500	477	\$229,007	\$13.69	\$3,135	254
Holyoke	\$982,499,428	5,314	\$184,889	\$16.85	\$3,115	255
Wendell	\$52,061,700	317	\$164,232	\$18.94	\$3,111	256
Brockton	\$3,162,036,470	16,420	\$192,572	\$16.14	\$3,108	257
Shelburne	\$114,413,900	471	\$242,917	\$12.78	\$3,104	258
New Salem	\$100,187,300	434	\$230,846	\$13.40	\$3,093	259

FY2012 (Last Year) Average Single Family Tax Bills STATEWIDE
(Information from Massachusetts DOR)

Community	Value	Parcels	Average	Rate	Taxes	Rank
Buckland	\$126,136,200	596	\$211,638	\$14.60	\$3,090	260
Chester	\$80,240,800	493	\$162,760	\$18.96	\$3,086	261
Northfield	\$232,520,400	1,065	\$218,329	\$14.10	\$3,078	262
Oxford	\$805,476,000	3,643	\$221,102	\$13.89	\$3,071	263
Charlton	\$1,006,865,800	3,969	\$253,682	\$12.00	\$3,044	264
Huntington	\$148,849,800	740	\$201,148	\$15.12	\$3,041	265
Easthampton	\$908,454,297	3,971	\$228,772	\$13.27	\$3,036	266
Gill	\$91,035,360	437	\$208,319	\$14.55	\$3,031	267
Middlefield	\$37,834,800	197	\$192,055	\$15.78	\$3,031	268
Egremont	\$289,716,600	753	\$384,750	\$7.86	\$3,024	269
Blandford	\$108,827,700	502	\$216,788	\$13.88	\$3,009	270
Ware	\$479,205,500	2,536	\$188,961	\$15.89	\$3,003	271
Hubbardston	\$324,477,200	1,374	\$236,155	\$12.70	\$2,999	272
Tyringham	\$121,886,900	244	\$499,536	\$6.00	\$2,997	273
Montague	\$381,475,200	2,034	\$187,549	\$15.97	\$2,995	274
Warwick	\$61,085,200	336	\$181,801	\$16.43	\$2,987	275
Plainfield	\$41,823,800	246	\$170,015	\$17.48	\$2,972	276
Warren	\$230,752,000	1,262	\$182,846	\$16.23	\$2,968	277
Swansea	\$1,489,365,100	5,662	\$263,046	\$11.27	\$2,965	278
Southbridge	\$445,231,717	2,692	\$165,391	\$17.83	\$2,949	279
Alford	\$196,848,900	294	\$669,554	\$4.40	\$2,946	280
Goshen	\$109,963,670	503	\$218,616	\$13.47	\$2,945	281
Holland	\$262,133,400	1,361	\$192,604	\$15.18	\$2,924	282
Taunton	\$2,417,905,300	10,337	\$233,908	\$12.47	\$2,917	283
Fitchburg	\$1,068,786,500	6,465	\$165,319	\$17.62	\$2,913	284
Leicester	\$689,471,700	3,128	\$220,419	\$13.18	\$2,905	285
Oakham	\$166,316,500	650	\$255,872	\$11.34	\$2,902	286
Yarmouth	\$3,948,799,700	12,732	\$310,148	\$9.33	\$2,894	287
Palmer	\$589,962,700	3,183	\$185,348	\$15.61	\$2,893	288
Eastham	\$2,309,394,500	5,074	\$455,143	\$6.35	\$2,890	289
Colrain	\$101,221,300	565	\$179,153	\$16.12	\$2,888	290
Wales	\$128,804,800	713	\$180,652	\$15.95	\$2,881	291
Gardner	\$671,116,900	3,906	\$171,817	\$16.67	\$2,864	292
Pittsfield	\$2,005,705,500	11,306	\$177,402	\$16.11	\$2,858	293
North Brookfield	\$274,855,800	1,300	\$211,428	\$13.50	\$2,854	294
Phillipston	\$146,337,700	750	\$195,117	\$14.62	\$2,853	295
Hardwick	\$144,623,400	684	\$211,438	\$13.32	\$2,816	296

FY2012 (Last Year) Average Single Family Tax Bills STATEWIDE
(Information from Massachusetts DOR)

Community	Value	Parcels	Average	Rate	Taxes	Rank
Monterey	\$378,734,200	714	\$530,440	\$5.27	\$2,795	297
Peru	\$61,987,100	344	\$180,195	\$15.40	\$2,775	298
New Bedford	\$2,479,568,800	12,359	\$200,629	\$13.76	\$2,761	299
Cumington	\$82,831,400	337	\$245,791	\$11.09	\$2,726	300
Barre	\$290,105,400	1,535	\$188,994	\$14.42	\$2,725	301
Westport	\$2,189,306,500	5,689	\$384,832	\$7.05	\$2,713	302
Sandisfield	\$159,531,700	595	\$268,121	\$10.10	\$2,708	303
Fairhaven	\$1,412,142,200	5,379	\$262,529	\$10.27	\$2,696	304
Hinsdale	\$183,878,000	840	\$218,902	\$12.26	\$2,684	305
Orange	\$313,656,700	2,067	\$151,745	\$17.69	\$2,684	306
Chicopee	\$1,974,119,900	10,987	\$179,678	\$14.93	\$2,683	307
Webster	\$855,346,100	3,774	\$226,642	\$11.78	\$2,670	308
Springfield	\$3,483,749,200	26,043	\$133,769	\$19.83	\$2,653	309
Winchendon	\$488,129,990	2,791	\$174,894	\$15.11	\$2,643	310
Washington	\$46,719,800	234	\$199,657	\$13.11	\$2,618	311
West Brookfield	\$285,447,900	1,271	\$224,585	\$11.63	\$2,612	312
Templeton	\$429,445,100	2,400	\$178,935	\$14.60	\$2,612	313
Lawrence	\$753,497,400	4,261	\$176,836	\$14.29	\$2,527	314
Savoy	\$43,593,100	287	\$151,892	\$16.54	\$2,512	315
Spencer	\$617,104,600	3,038	\$203,129	\$12.28	\$2,494	316
Adams	\$308,372,800	2,153	\$143,229	\$17.26	\$2,472	317
Mount Washington	\$62,035,700	146	\$424,902	\$5.65	\$2,401	318
Gosnold	\$144,623,070	134	\$1,079,277	\$2.21	\$2,385	319
Wareham	\$2,354,917,720	9,257	\$254,393	\$9.37	\$2,384	320
Fall River	\$1,875,870,000	8,703	\$215,543	\$10.98	\$2,367	321
Becket	\$415,069,600	1,692	\$245,313	\$9.51	\$2,333	322
Windsor	\$88,501,200	442	\$200,229	\$11.62	\$2,327	323
Dennis	\$4,528,292,560	11,534	\$392,604	\$5.88	\$2,309	324
New Ashford	\$21,903,900	84	\$260,761	\$8.84	\$2,305	325
Dudley	\$653,898,700	3,122	\$209,449	\$10.90	\$2,283	326
Otis	\$497,564,500	1,519	\$327,561	\$6.78	\$2,221	327
Athol	\$478,277,400	3,404	\$140,505	\$15.38	\$2,161	328
Cheshire	\$231,413,000	1,101	\$210,184	\$9.60	\$2,018	329
North Adams	\$357,456,000	2,638	\$135,503	\$14.82	\$2,008	330
Royalston	\$105,402,900	503	\$209,549	\$9.46	\$1,982	331
Clarksburg	\$103,197,800	602	\$171,425	\$11.53	\$1,977	332
Tolland	\$145,990,300	492	\$296,728	\$6.00	\$1,780	333

FY2012 (Last Year) Average Single Family Tax Bills STATEWIDE
(Information from Massachusetts DOR)

Community	Value	Parcels	Average	Rate	Taxes	Rank
Erving	\$95,581,920	512	\$186,683	\$7.51	\$1,402	334
Florida	\$44,526,800	295	\$150,938	\$8.25	\$1,245	335
Monroe	\$6,292,300	66	\$95,338	\$12.15	\$1,158	336
Rowe	\$45,770,900	210	\$217,957	\$5.16	\$1,125	337
Hancock	\$69,590,600	299	\$232,744	\$3.26	\$759	338

FY2012 (Last Year) Average Single Family Tax Bills STATEWIDE
 (Information from Massachusetts DOR)

Community	Value	Parcels	Average	Rate	Taxes	Rank
Barnstable			\$0		\$0	*
Boston			\$0		\$0	*
Brookline			\$0		\$0	*
Cambridge			\$0		\$0	*
Chelsea			\$0		\$0	*
Everett			\$0		\$0	*
Malden			\$0		\$0	*
Nantucket			\$0		\$0	*
Somerset			\$0		\$0	*
Somerville			\$0		\$0	*
Tisbury			\$0		\$0	*
Waltham			\$0		\$0	*
Watertown			\$0		\$0	*
*Information unavailable from Massachusetts Department of Revenue						



Frequently Asked Questions

City of Newton
Department of Assessment Administration
Elizabeth Dromey, Director
James Shaughnessy, Residential Assessor
Michael Flynn, Commercial Assessor

City of Newton
Department of Assessment Administration
Frequently Asked Questions

Page 1

1. What do the assessors look at when determining an assessment?
2. What does my assessment represent?
3. My tax bill has gone up more than 2.5%. Doesn't Proposition 2 ½ limit the tax increase?

Page 2

4. My assessment increased more than 2.5%. Doesn't Proposition 2 ½ limit the amount my assessment can increase?
5. I am elderly and cannot afford this tax bill. Can't the assessors lower this assessment because I am elderly?
6. I am a young person who grew up in Newton and cannot afford this tax bill. Can't the assessors lower this assessment because I can't afford to live in Newton?
7. My neighbor told me not to let a representative from the assessors' office into my house. Do I have to let the assessors into my house?
8. My neighbor does not allow the assessors in and I do. Am I being penalized?

Page 3

9. Why do the assessors want to see the interior and exterior of my property?
10. Why did my assessed value increase when I did not do anything to the property in 5 years and I am not selling the property?
11. Why could my assessment change every year?
12. The taxes are too high. Soon I will not be able to afford to live in Newton. Why are you raising my taxes every year?

Page 4

13. What percentage of market value are the assessed values?
14. Why did my assessment change a different percentage than the assessment on my neighbors' house?
15. My assessment increased 20%. Does that mean my taxes will increase 20%?
16. I think my assessment is out of line with my neighbors' property, whose property is assessed lower. I want my assessment to be as low as theirs.

Page 5

17. Do I have to apply for an abatement every year if I received one in the past?
18. What is the difference between an abatement and an elderly exemption?
19. My neighbors' house assessment used to be higher than mine, now my assessment is higher than theirs. Why?
20. My neighbors have a two-family property and I have a single-family property. Why is my single-family property assessed higher than their two-family property?

Page 6

21. A house three times larger than mine sold up the street from me for \$2,000,000. Will that make my assessment go up?
22. What will happen to my assessment if I put an addition on my property?
23. Why is the previous owner's name still appearing on the tax bill?
24. My assessment went up 25%, is that good news or bad news?

Page 7

25. There is an item on my tax bill called "CPA Charge". What is that?
26. What are the median assessed values of single families, two and three families, condominiums, and apartment buildings for Fiscal Year 2013?
27. My next door neighbors have done work on their house – a new kitchen, new bathroom and an addition. How come their assessment has not gone up?

Page 8

28. I have a new house and recently I received a supplemental tax bill for the same fiscal year. Why did I receive more than one tax bill for the same property for the same fiscal year?

City of Newton
Department of Assessment Administration
Frequently Asked Questions

1. What do the assessors look at when determining an assessment?

The assessors look at a property the same way a potential buyer looks at a property. The assessors consider the factors that a potential buyer considers. Examples of important factors are the following: location, interior condition, house size, kitchen quality, and bath quality. The assessors examine many qualities and conditions and then look for comparable properties that have sold in the neighborhood. Since no two houses are identical, adjustments are made for differing characteristics to determine the assessment. Thus the assessment is an estimate of market value.

2. What does my assessment represent?

The assessment is an estimate of market value. The definition of market value is the price a willing buyer would pay a willing seller in an open, competitive market, without any undue influences. The assessment represents the estimate of market value as of January 1, 2012 for Fiscal Year 2013. This estimate of market value is determined by examining sales of properties from late calendar year 2010, calendar year 2011, and early calendar year 2012 sales. Although the majority of properties are not for sale, Massachusetts General Laws requires an assessment, or an estimate of market value, on every property. Sales of similar or comparable properties within a neighborhood are the best indicator of market value.

3. My tax bill has gone up more than 2.5%. Doesn't Proposition 2 ½ limit the tax increase?

Proposition 2 ½ limits the City of Newton, and all other Massachusetts communities, the amount of citywide taxes that can be raised. Proposition 2 ½ limits a community to raising citywide taxes by 2.5% from the previous year's levy limit. Allowing for new growth can then increase this levy limit. New growth consists of property tax increases caused by new construction, renovations or land use changes. Proposition 2 ½ does not limit any individual property tax increase or decrease. For example, in Fiscal Year 2013, the Mayor and the Board of Aldermen approved a budget that included a tax levy of \$260,189,736. The levy limit for Fiscal Year 2012 was \$250,798,454. So, the maximum amount of taxes that can be budgeted by the Mayor and the Board of Aldermen for Fiscal Year 2013 is $\$250,798,454 \times 102.5\% = \$257,068,415$ plus certified new growth. (The 102.5% number is increasing the previous year's limit by 2.5%). The new growth, which was certified by the Massachusetts Department of Revenue, is \$3,121,321. Therefore, the maximum amount of taxes which can be levied for Fiscal Year 2013 is $\$257,068,415 + \$3,121,321 = \$260,189,736$. This figure is the levy limit, which will be used to determine next year's maximum tax levy. A community may increase the property tax levy less than 2.5%, but that is a determination made by the budgetary requirements of the city as determined by the Mayor and the Board of Aldermen. A community may not increase the tax levy greater than 2.5% without approval of the voters. The Mayor and the Board of Aldermen increased the tax levy by \$9,391,282. This is what causes a tax increase, not an increase or decrease in assessed values.

4. My assessment increased more than 2.5%. Doesn't Proposition 2 ½ limit the amount my assessment can increase?

Proposition 2 ½ limits the amount of taxes a community can raise from property tax. The assessment is an estimate of market value. Since the real estate market changes are based upon the buyers' and sellers' needs, there is no limit to the amount an assessment can increase or decrease. Assessment changes are always based on the real estate market. For example, if a property sells for \$500,000 in calendar year 2011, there is no limit or minimum price it would sell for in calendar year 2012 or beyond. It could sell for \$600,000, \$700,000, \$1,000,000 or \$400,000. The sale price would be based on the real estate market at that time. The assessments do not predict market value. The assessments reflect (or report) market value.

5. I am elderly and cannot afford this tax bill. Can't the assessors lower this assessment because I am elderly?

The assessment is an estimate of market value. The selling price of a property is not related to the age of the owner. The assessment cannot be lowered or raised based on the age of the owner. The assessments are a reflection of the real estate market. Elderly owners do not sell their properties for any lower or higher prices than the market will allow. If property owners throughout the city sell their homes for less, the assessments will decrease. If property owners sell their homes for more, the assessments will increase.

6. I am a young person who grew up in Newton and cannot afford this tax bill. Can't the assessors lower this assessment because I can't afford to live in Newton?

The assessment is an estimate of market value. The selling price of a property is not related to the age of the owner. The assessment cannot be lowered or raised based on the age of the owner. The assessments are a reflection of the real estate market. Young owners do not sell their properties for any lower or higher prices than the market will allow. If property owners throughout the city sell their homes for less, the assessments will decrease. If property owners sell their homes for more, the assessments will increase.

7. My neighbor told me not to let a representative from the assessors' office into my house. Do I have to let the assessors into my house?

You do not have to allow the assessors into your home. We only request the inspection in order to be as fair and accurate as possible. However, if an assessor is denied entrance, property owners give up their ability to challenge the assessed value. It is impossible to question an assessment if a property owner refuses to allow the assessors a view of the entire property. In instances where the assessors do not get into a property, estimates are made about the condition of the interior of the property, the kitchen and bath qualities, and whether there is finished attic space and finished basement space.

8. My neighbor does not allow the assessors in and I do. Am I being penalized?

As stated in Question 7, you do not have to allow the assessors into your home. We only request the inspection so we can be as fair and accurate as possible. Accurate assessments are based on accurate information. By allowing the assessors to view the interior and exterior of your property, your assessed value is based on accurate information. If a person does not allow the assessors to view the interior and exterior of a property, estimates are made about the condition of the interior of the property, the kitchen and bath qualities, and whether there is finished attic space and finished basement space. If the estimates are overstated, property owners may contact the assessor's office to arrange an interior and exterior inspection of their property.

9. Why do the assessors want to see the interior and exterior of my property?

Just as a potential buyer wants to see the interior and exterior of the property before determining a purchase price, the assessors want to see the interior and exterior of the property to make an accurate determination about the market value of the property. The interior information of a property is essential in determining the estimate of market value. Without the actual information, estimates of the interior information have to be made.

10. Why did my assessed value increase when I did not do anything to the property in 5 years and I am not selling the property?

The assessed value represents the estimate of market value of the property. The real estate market changes constantly. The assessment for Fiscal Year 2013 represents the estimate of market value as of January 1, 2012. This estimate of market value is determined by examining sales of properties from late calendar year 2010, calendar year 2011, and early calendar year 2012. Although there may not have been any physical changes to the property, buyers may be paying more or less for properties than they were in previous years. The assessment changes reflect the changes in the purchase prices of similar homes in the neighborhood. The assessments do not predict market value. The assessments reflect (or report) market value. The real estate market can change dramatically from year to year. It is not limited to 1, 5, 10 or 25-year intervals. The buyers and sellers determine the market value of properties. The assessments reflect what the buyers and sellers are doing as of the assessment date.

11. Why could my assessment change every year?

The assessed value represents the estimate of market value of the property. The real estate market changes constantly. The assessments change based upon these changes in the real estate market. The assessments do not automatically go up or down every year. The assessed values in the early 1990's went down because the buyers were paying less for properties than they were in previous years. In Newton, the assessed values went down from Fiscal Year 1992 to Fiscal Year 1993 because the sales prices went down during this period. The assessed values then remained relatively constant from Fiscal Year 1993 to Fiscal Year 1994 because the purchase prices remained constant in this period. The assessments have increased recently because of the increase in the real estate market. The assessed values decreased from Fiscal Year 2007 to Fiscal Year 2008 due to a small decrease in sale prices. The changes in the assessment reflect the real estate sales from the appropriate time period. For Fiscal Year 2013, it is the market value as of January 1, 2012. This Fiscal Year 2013 assessment is determined by examining sales of properties from late calendar year 2010, calendar year 2011, and early calendar year 2012.

12. The taxes are too high. Soon I will not be able to afford to live in Newton. Why are you raising my taxes every year?

The assessors do not raise or lower taxes. The assessors reflect (or report) market value. The tax increase or decrease is determined by the budgetary requirements of the Mayor and the Board of Aldermen to run the city. Rising or falling assessed values do not mean rising or falling tax bills. The increase or decrease in taxes seen by the property owner is a direct result of the increase or decrease in the budget. The budget increase or decrease determines the tax increase or decrease. Individual property owners may see an increase in their assessments due to renovations, additions or improvements that would cause an increase in their tax liability. There may also be some shifting of tax liability among classes of property (residential, commercial, industrial, personal) based upon the overall increase or decrease in value of the particular class. The primary reason for a tax increase or decrease is based on the budget requirements of the Mayor and the Board of Aldermen to fund city operations.

13. What percentage of market value are the assessed values?

Assessments represent 100% of market value as required by Massachusetts General Laws. The assessments for Fiscal Year 2013 represent the estimate of market value as of January 1, 2012.

14. Why did my assessment change a different percentage than the assessment on my neighbor's house?

Market value changes occur in many forms. Buyers have different requirements and these requirements sometimes change from year to year. Also, sometimes renovations have been performed on a property that would cause a change in assessed value different from a similar property that did not undergo renovations. A recent inspection by the assessor's office also may have contributed to a change in assessed value. Perhaps the property had not been inspected in several years and the property information has now been updated to more accurately reflect the condition of the property.

15. My assessment increased 20%. Does that mean my taxes will increase 20%?

No. The valuation change will not be indicative of the tax change. There are two components that help determine the tax rate. The first is the budgetary requirements of the Mayor and the Board of Aldermen to run the city. The second is the overall value of the property within the city. For example, if the budget increases 5%, then the tax increase throughout the city would be approximately 5%, regardless of what happened to the overall assessed values. For example, if the budget increased 5% and all the assessments in the city went up 20%, the average tax increase would still be 5%. The tax rate, which is calculated simply by dividing the budget by the value of property, would decrease approximately 15%. In another example, if the budget increased 5% and all the assessments went down 20%, the average tax increase would still be 5%. The tax rate, which is calculated simply by dividing the budget by the value of property, would increase approximately 25%.

16. I think my assessment is out of line with my neighbors' property, whose property is assessed lower. I want my assessment to be as low as theirs.

The first step in comparing properties is to examine the factual components of each property. Many times properties that appear larger are in fact much smaller than people think. Quality characteristics should also be examined when making comparisons. For example, a property with a newer kitchen would sell for more than a property with a much older, unimproved kitchen with all other factors being comparable. Ultimately, the assessors have to determine if the assessment represents market value on the subject property and also if the assessed value on the neighbors' property represents market value. If a neighboring property is too low in relation to surrounding properties, the assessors cannot compound their low assessment by also lowering surrounding properties. The resolution may be that the assessors have to raise the neighboring property's assessed value to make it more in line with the surrounding properties. The most important criterion the assessors examine in an abatement request is the market value of the property of the person filing the abatement and the market value of any property that the person filing the abatement mentions on the application. For example, if there were 5 identical houses on a street and 4 were assessed for \$500,000 and one was assessed for \$100,000, and there were three sales on the street at \$500,000 each, then the assessors could not lower the 4 properties to \$100,000. Based upon the sales, the market value would be very close to \$500,000. The correct action for the assessors would be to raise the property assessed for \$100,000 to \$500,000.

17. Do I have to apply for an abatement every year if I received one in the past?

No. If there was a specific problem or circumstance about your property which warranted an abatement in the past, that information would remain on the property record until the issue was corrected. All subsequent assessments would be calculated based on the information that originally warranted the abatement. Many times people will file an abatement every year telling us they are located next to, for example, a gas station. We know the gas station is there every year and will take it into consideration when calculating new assessed values. You need not file every year.

18. What is the difference between an abatement and an elderly exemption?

An abatement is a reduction in a real estate valuation based on a correction to the assessed valuation. The assessed value has nothing to do with the age of the owner, the income of the owner or any other financial information about the owner. The assessment represents an estimate of market value. An elderly exemption is a reduction in a real estate tax due based on certain age and income requirements set forth by the Commonwealth of Massachusetts. An individual who files for an abatement of real estate valuation because of age and/or income has filed the wrong form. Instead, that individual should file for an elderly exemption. The only factor the assessors examine on an abatement application is the market value of the property. Age and/or income do not factor into assessment determination. (Please refer to Questions 5 and 6)

19. My neighbors' house assessment used to be higher than mine, now my assessment is higher than theirs. Why?

Market value changes occur in many forms. Buyers have different requirements and these requirements sometimes change from year to year. Also, sometimes renovations have been performed on a property that would cause a change in assessed value different from a similar property that did not have renovations. A recent inspection by the assessor's office also may have contributed to a change in assessed value. Perhaps the property had not been inspected in several years and the property information has now been updated to more accurately reflect the condition of the property. Historical trends are just historical information. Properties change over time, as do market values. Just because a property was assessed less than a neighboring property in 1973 does not mean the property will always be assessed less than the neighboring property. Renovations, additions, disrepair, fire and other factors can also change historical relationships.

20. My neighbors have a two-family property and I have a single-family property. Why is my single-family property assessed higher than their two-family property?

Assessments reflect what has occurred in the real estate market. In Newton, single-family properties in the past 5-10 years have sold for more than similarly sized two-family properties in the same neighborhood. Most buyers in Newton do not want to be landlords. The typical buyer in Newton prefers a single-family and the sales prices over the past 5-10 years bear out this fact. A single-family property cannot be compared to a two-family any more than it can be compared to a condominium. Comparisons should be made between similar uses of properties. The difference in selling prices between a single-family and a two-family property has closed significantly in the last 5 calendar years, with the sale price of two-family dwellings increasing at a much faster rate than the single-family property. Two-family properties have become more popular with new homebuyers because of the ability of a tenant to contribute to the owner's mortgage obligation. The two-family property is also priced slightly less than a comparable single-family property.

21. A house three times larger than mine sold up the street from me for \$2,000,000. Will that make my assessment go up?

No. If the property is three times larger than your property, it would not be considered comparable to yours. For example, if your property is a 1,500 square foot home, assessed for \$500,000 and up the street a 4,500 square foot home sold for \$2,000,000, it would not be considered comparable to your property and this sale would not impact your assessment. Assessments are based on comparable sales. Even if a 1,500 square foot home sold next door for \$2,000,000, one sale would not impact your assessment. However, for example, if a few sales of 1,500 square foot homes sold for \$2,000,000, then the market value of a 1,500 square foot home in that neighborhood would be close to \$2,000,000. You should expect a change in future assessments because of the apparent change in market value. In this example where there were multiple sales of 1,500 square foot homes for \$2,000,000, it appears the market value of the 1,500 square foot home is no longer \$500,000.

22. What will happen to my assessment if I put an addition on my property?

Typically, larger properties sell for more than smaller properties with all other factors being equal. If an addition is put on a home, the house becomes larger and generally the market value of the property increases. The assessors would then have to see what similarly sized properties were selling for in the neighborhood. Historical sales have indicated that larger homes sell for more than smaller homes with all other factors being equal. Since the assessed value is an estimate of market value, it is highly likely that the assessed value of your property will increase once the addition is put on the property.

23. Why is the previous owner's name still appearing on the tax bill?

Legally, the assessors must retain the owner of record as of January 1, 2012 for Fiscal Year 2013. If you purchased the property after January 1, 2012, by law we will carry both your name and the legal owner as of January 1, 2012. For Fiscal Year 2014, the legal owner as of January 1, 2013 will be maintained. This is when the prior owner would be removed and your name would be the only name appearing on the ownership record.

24. My assessment went up 25%, is that good news or bad news?

Typically, the home is the single largest investment most people make. The assessment reflects the market value of this asset. People often associate rising assessments with rising taxes. However, this is not the case. Rising budgets cause rising taxes. If the budget increases, typically taxes increase. If the budget decreases, typically taxes decrease. The assessed value represents the market value of the property. If all the assessments went down 25% and the budget increased, taxes would still increase. The budget is the driving force behind rising taxes. If the assessed value of a property increases, this generally increases the property owner's equity in the property. Although many property owners are not selling their homes, an increased asset value is usually received as welcome news. Most people understand tax increases are not caused by assessment increases. They understand that increased spending causes rising tax bills. The majority of property owners are glad to hear their home is increasing in value, even if they are not currently selling their property.

25. There is an item on my tax bill called “CPA Charge”. What is that?

The term “CPA Charge” refers to The Community Preservation Act surcharge approved by the voters of the City of Newton beginning in Fiscal Year 2002. This surcharge is 1% of the total property tax due for the parcel. This surcharge, approved by a majority of City of Newton voters, is for the acquisition and preservation of open space, recreational land, affordable housing, and historic properties. The Commonwealth of Massachusetts will match the amount collected by the City of Newton up to but not to exceed 100% of the total surcharge money collected. There is a committee set up to review requests for use of the Community Preservation Act money collected. The Committee name is the Community Preservation Committee. This committee then makes recommendations to the Newton Board of Aldermen. The Newton Board of Aldermen has the final say as to how the Community Preservation Act funds are distributed and utilized. For more information on the Community Preservation Act, please visit Newton’s Community Preservation Program website (www.newtonma.gov/cpa).

26. What are the median assessed values of single families, two and three families, condominiums, and apartment buildings for Fiscal Year 2013?

The median assessed values for Fiscal Year 2013 are as follows:

Single Family	\$685,900
Two-Family	\$565,200
Three-Family	\$611,950
Condominium	\$393,000
Apartments	\$878,700

27. My next door neighbors have done work on their house – a new kitchen, new bathroom and an addition. How come their assessment has not gone up?

Assessments reflect the property condition and market value of the property on January 1 of the prior year. If, for example, your neighbors took out a building permit in December, and the construction work was not started until after January 1, the change in the market value of the property would not be reflected in the assessment until the following fiscal year. Sometimes, when there is a large construction project, it can take several years for the entire project’s market value to be reflected in the assessment. Each year the assessors would determine how much the market value of your neighbor’s home increased, based on how far along the construction was on January 1.

28. I have a new house and recently I received a supplemental tax bill for the same fiscal year. Why did I receive more than one tax bill for the same property for the same fiscal year?

The Newton Board of Alderman complied with a directive from the Commonwealth of Massachusetts to issue a supplemental tax bill to property owners whose property had construction resulting in an increase in market value (assessment) of more than 50%. This provision is triggered by the issuance of an occupancy permit and an increase in market value of more than 50%. The assessors analyze all properties with occupancy permits to determine if the construction added more than 50% to the fair market value of the property. If the construction added more than 50% to the fair market value of the property, then a supplemental tax bill is issued. The supplemental tax is based on the difference between the original market value and the new market value, multiplied by the tax rate and prorated from the date of the occupancy permit to the end of the fiscal year. In certain instances, a property owner could receive a supplemental tax bill for the prior fiscal year as well as the current fiscal year, depending on the date of the occupancy permit.