

LONG-RANGE FACILITIES PLANNING UPDATE

School Committee & City Council
Joint Meeting

NEWTON, MASSACHUSETTS
November 30, 2016

AGENDA

1. Goals, Context, Desired Outcomes
2. Enrollment growth and projections
3. Planning strategies and methods
4. FY17 Recommended Long-Range Facilities Plan
5. Questions and Discussion

NPS DISTRICT GOALS 2016-17

School facilities goal #1

Continue to develop and refine plans to improve teaching and learning facilities across the district.

School facilities goal #2

Review and update enrollment trends preschool through grade 12 and develop both short-term, mid-range and long-term facility plans as needed.

School facilities goal #3

Approve and implement a plan for student assignment in order to relieve space at overcrowded schools.

COMMUNICATION GOAL

- To continually improve information flow and project coordination on Newton Public Schools priorities, objectives and long-range plans.

DESIRED OUTCOMES

- Up-to-date teaching and learning facilities
 - Regular Education, Small Group instruction, Special Education, Art, Music, Gymnasium, Media Center, Cafeteria
- Enough K-5 capacity to maintain optimal class sizes and meet educational needs
- Sufficient middle school capacity
- Improve balance of high school enrollment
- Improve access (ADA), energy, safety and security

FACILITIES WORK COMPLETED (SINCE 2012)

Projects	Timing
Start of Long-Range Elementary Plan	2012
Day Middle School renovation	2013
Carr	2014
Angier Elementary School	2015

MAJOR PROJECTS



Zervas – Under Construction



Cabot – Final Design Development

➤ MSBA SOI Submitted for Lincoln-Eliot / NECP

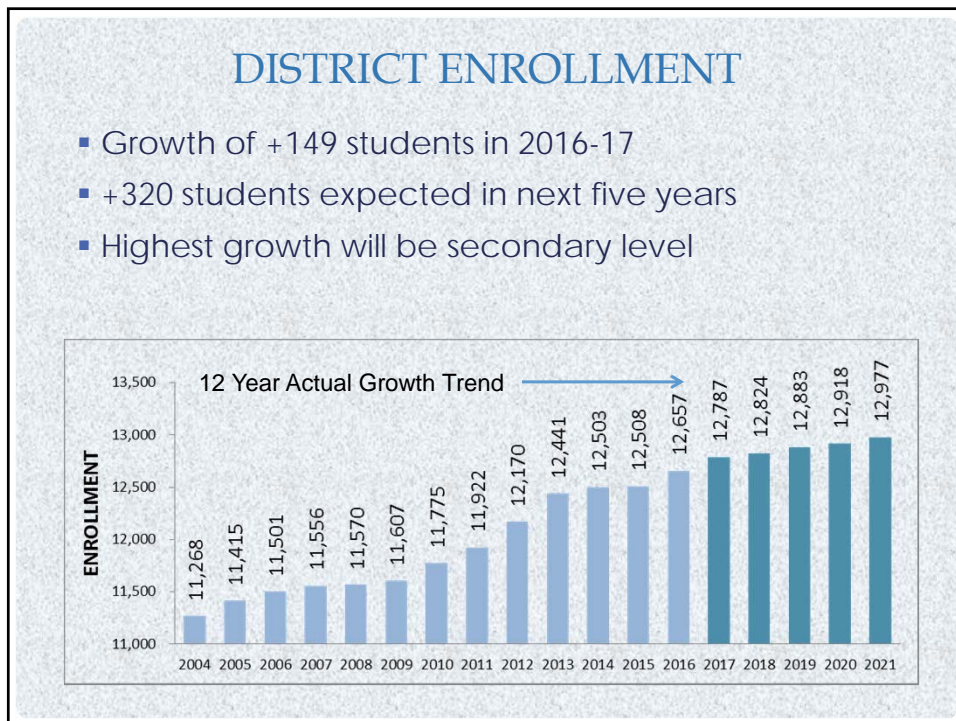
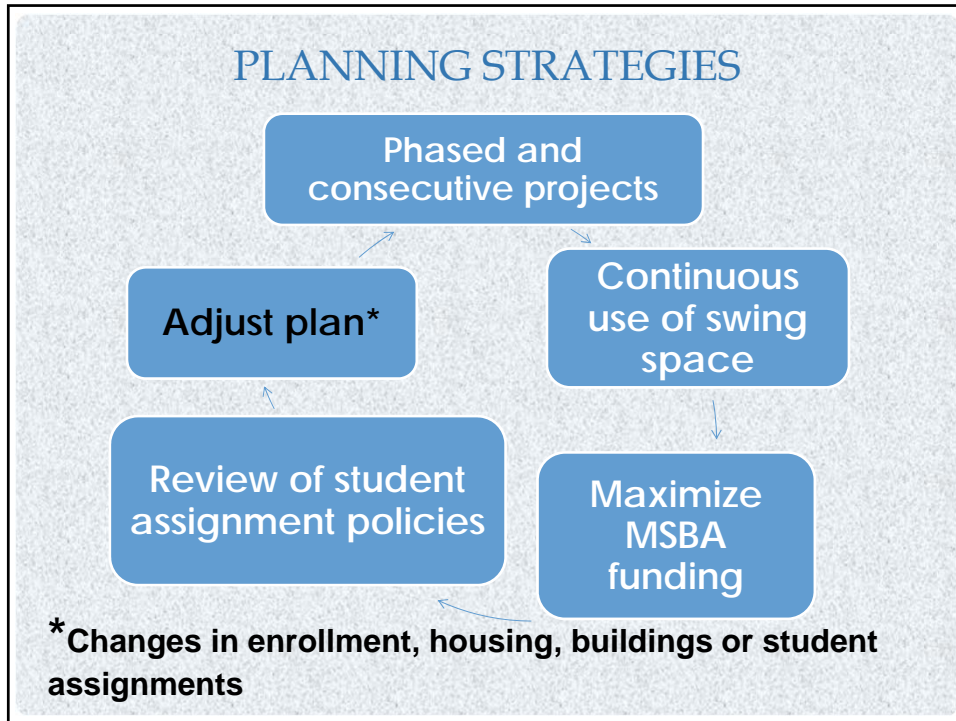
FACILITY WORK IN 2016-17

NECP Relocation – Windows, Playground & Access Improvements

Space upgrade for High School Stabilization

Expanded capacity at Brown

Plans for space upgrade and expansion for Central High School



ELEMENTARY ENROLLMENT

- Recent projections have ranged from 5,700 to 6,000 students
- Enrollment has stabilized around 5,800 students



MIDDLE SCHOOL ENROLLMENT

- Middle school grade sizes peak in 2020
- Brown and Day enrollment increases the most over the next 5 years



HIGH SCHOOL ENROLLMENT

- System-wide growth continues to arrive at the high school level
- North-South enrollment difference is 135 to 316 students over the next 5 years



LONG-RANGE PLAN - FY17 UPDATES

- No changes to the project timeline or sequence
 - Cabot opens in Sep 2019 instead of Jan 2019
 - Joint feasibility study for the next mid-range project at Countryside and Franklin
 - A facilities assessment update recommended for middle schools and district-wide programs
- Recommendations are made with input from city administration and coordinated with the five year CIP (FY18-FY22)
 - Plans are confirmed during feasibility study

SWING SPACE OPTIONS

- Carr building as swing space until Sept 2019 when Horace Mann recommended to relocate
- Lincoln-Eliot recommended to stay in place during renovation / construction of new school
- Current Lincoln-Eliot building recommended to replace Carr as swing space

LONG-RANGE PLAN – NEXT FIVE YEARS

	Cabot (at Carr)	Lincoln- Eliot/NECP	Horace Mann	Countryside or Franklin	Lincoln- Eliot as Swing Space	Ward
Sep 2017	Construction	Feasibility				
Sep 2018	Construction	Design				
Sep 2019	Re-opens	Construction	Moves to Carr	Joint feasibility		
Sep 2020		Construction		Joint feasibility	Design	Start MSBA
Sep 2021		Re-opens		Design	Renovation	Feasibility