

Outdoor Performance Pavilion at the Newton Centre Bowl - Feasibility Study Concept Options



City of Newton
HKT Architects Inc.
CBA Landscape Architects LLC

May 16, 2022

PROJECT GOALS Site Location & Project Overview

- Create an outdoor, shared-use community performance space to serve Newton's collective arts organizations and the community as a whole
- Retain the character of Newton Centre Playground and respect its historical significance
- Combine the historical aspects of the park with its current use and future needs to achieve our community's vision for arts/cultural activities
- Create a park improvement which provides opportunity for our community to connect, and to experience accessible and affordable arts/culture performances



INSPIRATION IMAGES

Historic Photos



Park view
(Image from Newton Historical Society)



Path from Tyler Terrace and Centre Street c1918
(Postcard from Newton Historical Society)



Basketball court c1909
(Image from Newton Historical Society)



Children's Corner c1916
(Image from Newton Historical Society)



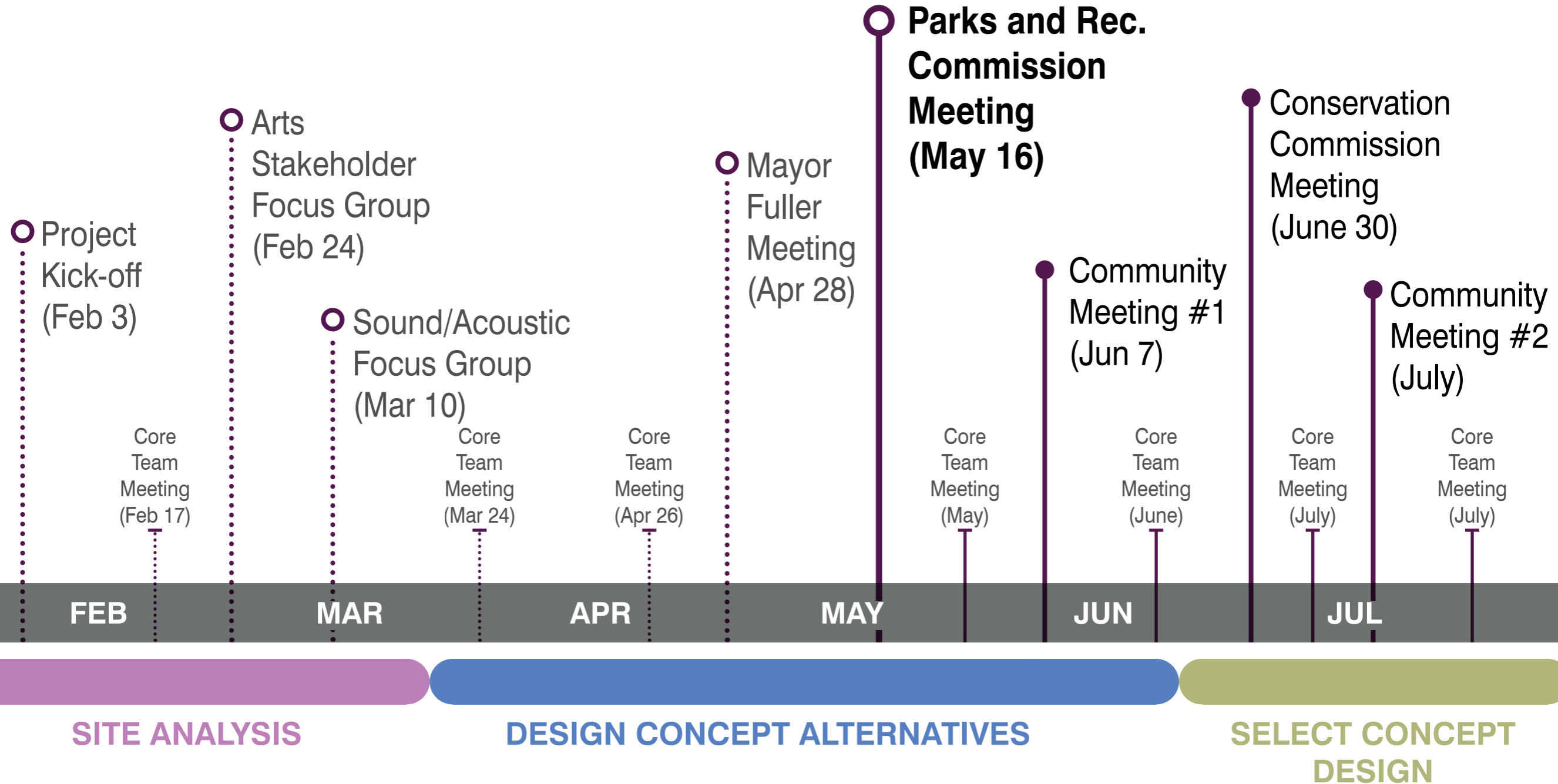
Play Gate
(Image from Newton Historical Society)

CURRENT USE

Performances in Newton Centre Bowl, 2020-21



FEASIBILITY STUDY SCHEDULE



CORE PLANNING TEAM

CITY OF NEWTON: Paula Gannon (Director Cultural Development), Danielle Moriarty (Assoc. Dir. Cultural Development), Luis Perez Demorizi (Dir. Parks & Open Space), Greg Mellet (Asst. Dir. Parks & Open Space), Rafik Ayoub (City Project Manager Public Buildings)

HKT ARCHITECTS INC: William Hammer (Principal Architect), Andres Velandia (Architectural Designer)

CBA LANDSCAPE ARCHITECTS LLC: D.J. Chagnon (Principal Landscape Architect), Amy Foster (Landscape Architect)

INSPIRATION IMAGES

Local amphitheatre / stage examples



Boston College Stokes Amphitheatre. Newton, MA



Jacob's Pillow Henry J. Leir Outdoor Stage. Becket, MA



Boarding House Park. Lowell, MA



Camden Library Harbor Park amphitheatre. Camden, ME

INSPIRATION IMAGES

Precedent Images



Subtle paving cues

IMAGE: Grinnell College Amphitheatre. Grinnell, IA



Historic character walls

National Cathedral amphitheatre. Washington DC



Flexible Seating

IMAGE: Rural Studio Bodark amphitheatre, Newbern AL



Sloped lawn

IMAGE: Parc des Buttes Chaumont. Paris, France



Bathroom Enclosure Structure

IMAGE: Almont Park, Boston MA

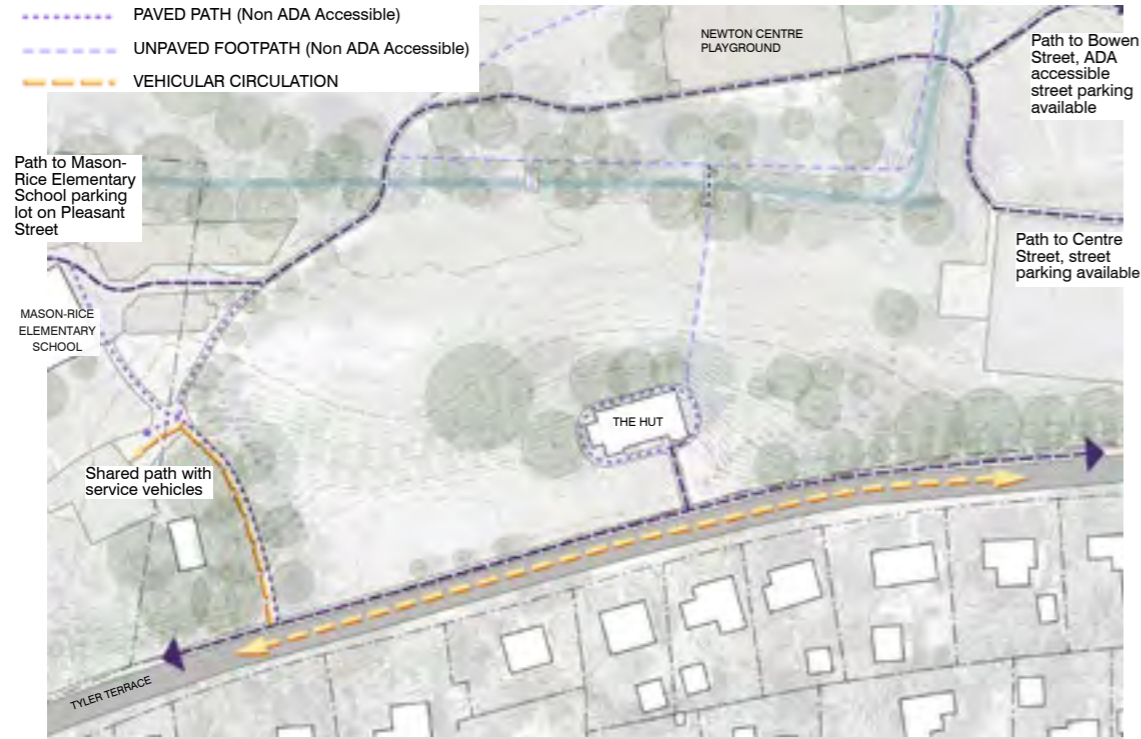


Bathroom Enclosure Structure

IMAGE: Classic recreation systems - Northwest Model

EXISTING CONDITIONS Site Analysis

- PAVED PATH (Presumed ADA Accessible)
- PAVED PATH (Non ADA Accessible)
- UNPAVED FOOTPATH (Non ADA Accessible)
- VEHICULAR CIRCULATION



SITE CIRCULATION

- ATHLETICS
- PLAYGROUND
- EDUCATION
- RESIDENTIAL



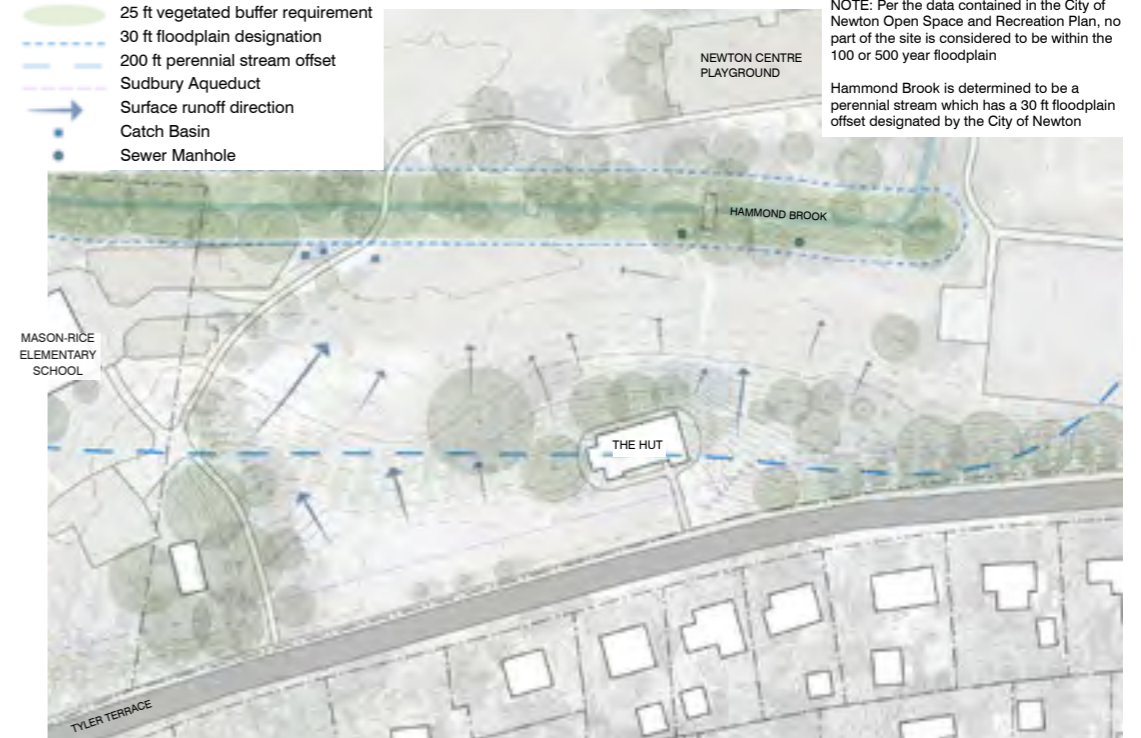
SITE PROGRAM



SUN EXPOSURE

- 25 ft vegetated buffer requirement
- 30 ft floodplain designation
- 200 ft perennial stream offset
- Sudbury Aqueduct
- Surface runoff direction
- Catch Basin
- Sewer Manhole

NOTE: Per the data contained in the City of Newton Open Space and Recreation Plan, no part of the site is considered to be within the 100 or 500 year floodplain
 Hammond Brook is determined to be a perennial stream which has a 30 ft floodplain offset designated by the City of Newton



SITE DRAINAGE

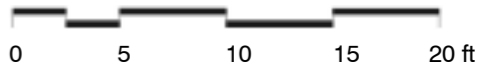
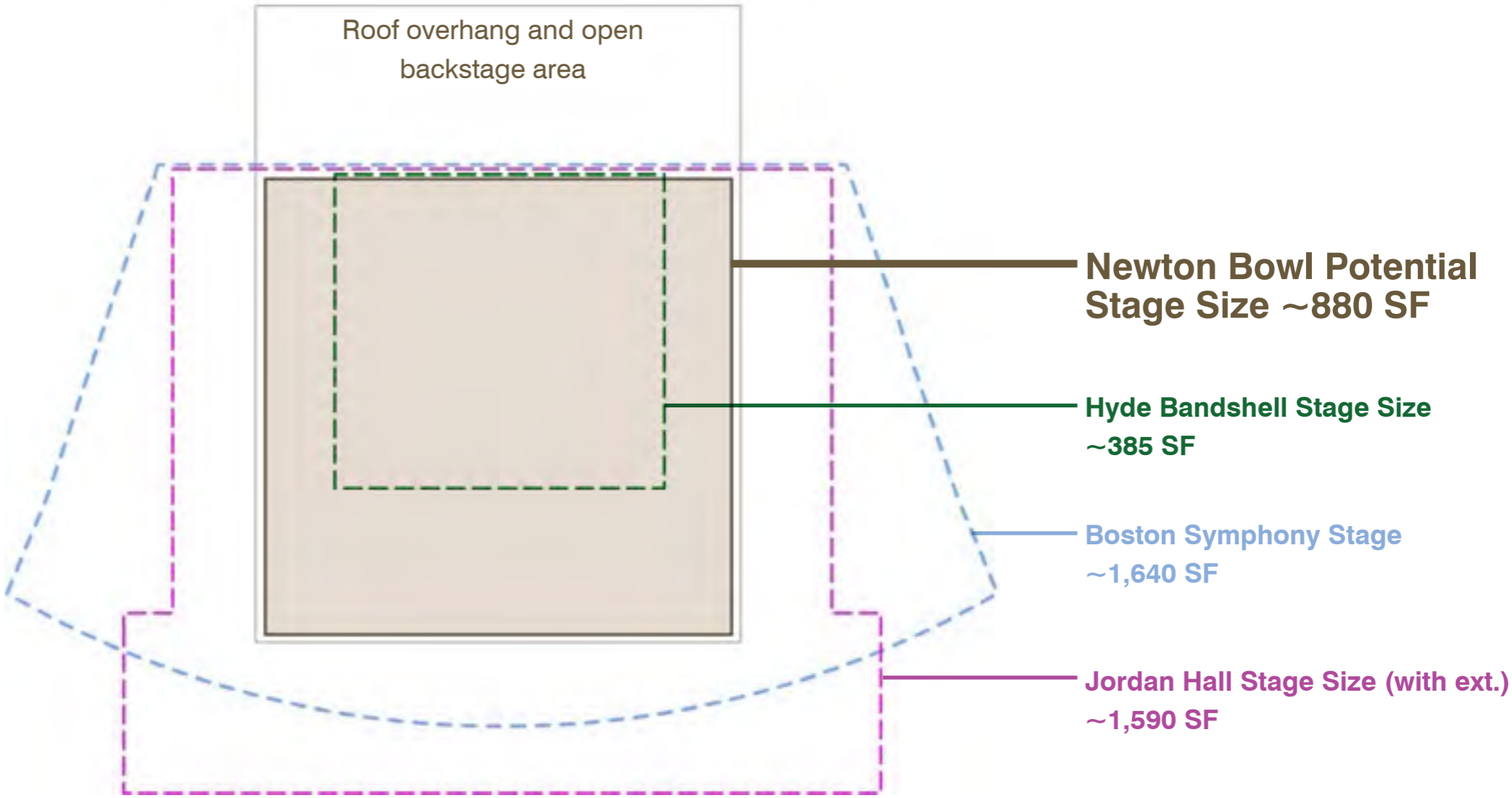
NEWTON CENTRE BOWL PAVILION
ARCHITECTURAL CONCEPT

STAGE SIZE COMPARISON
SCHEMATIC PLAN

CONCEPT DESIGN

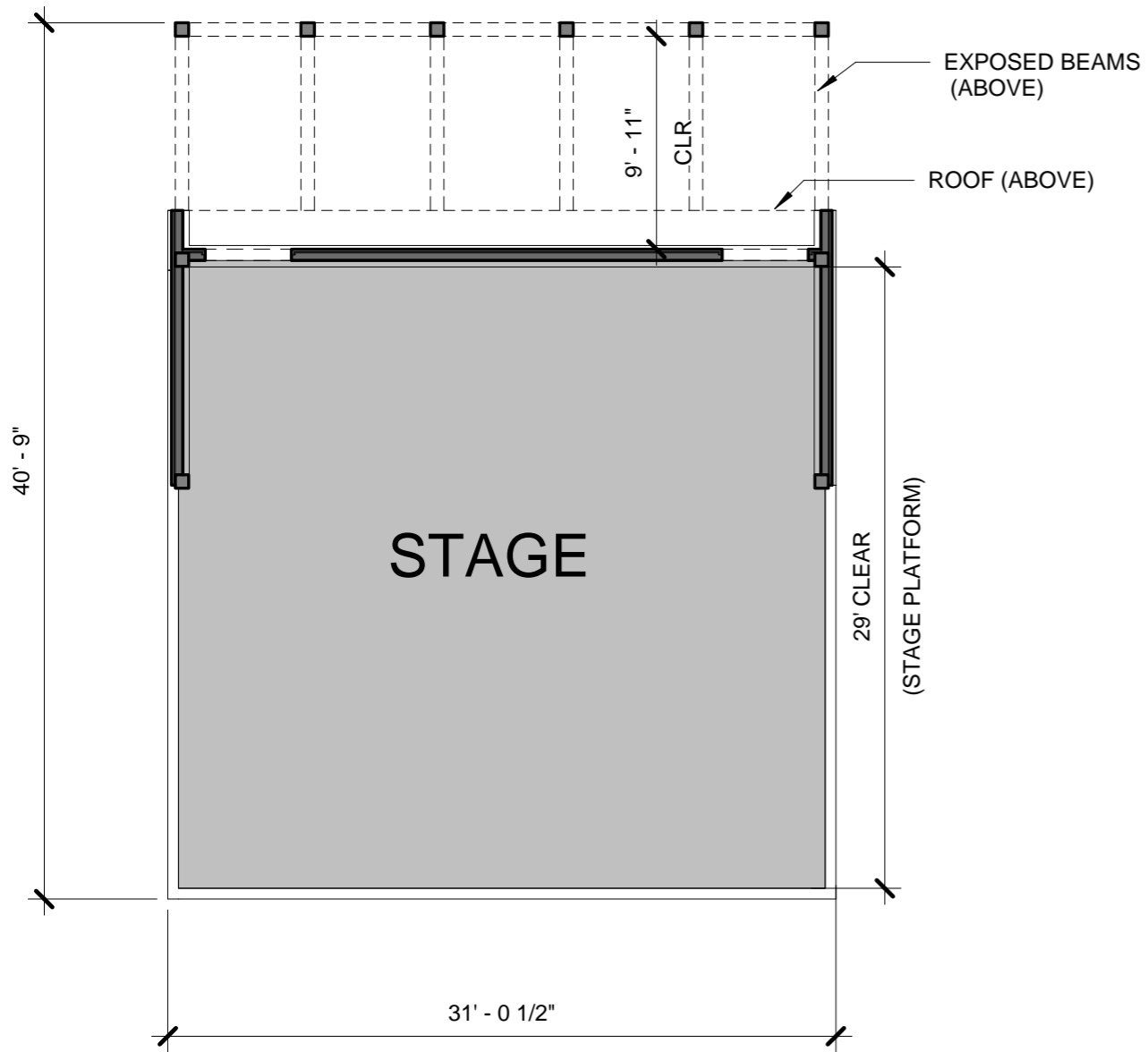
Stage Sizing References

NOTE: Precedent stage sizes are approximate and do not include backstage or wing areas

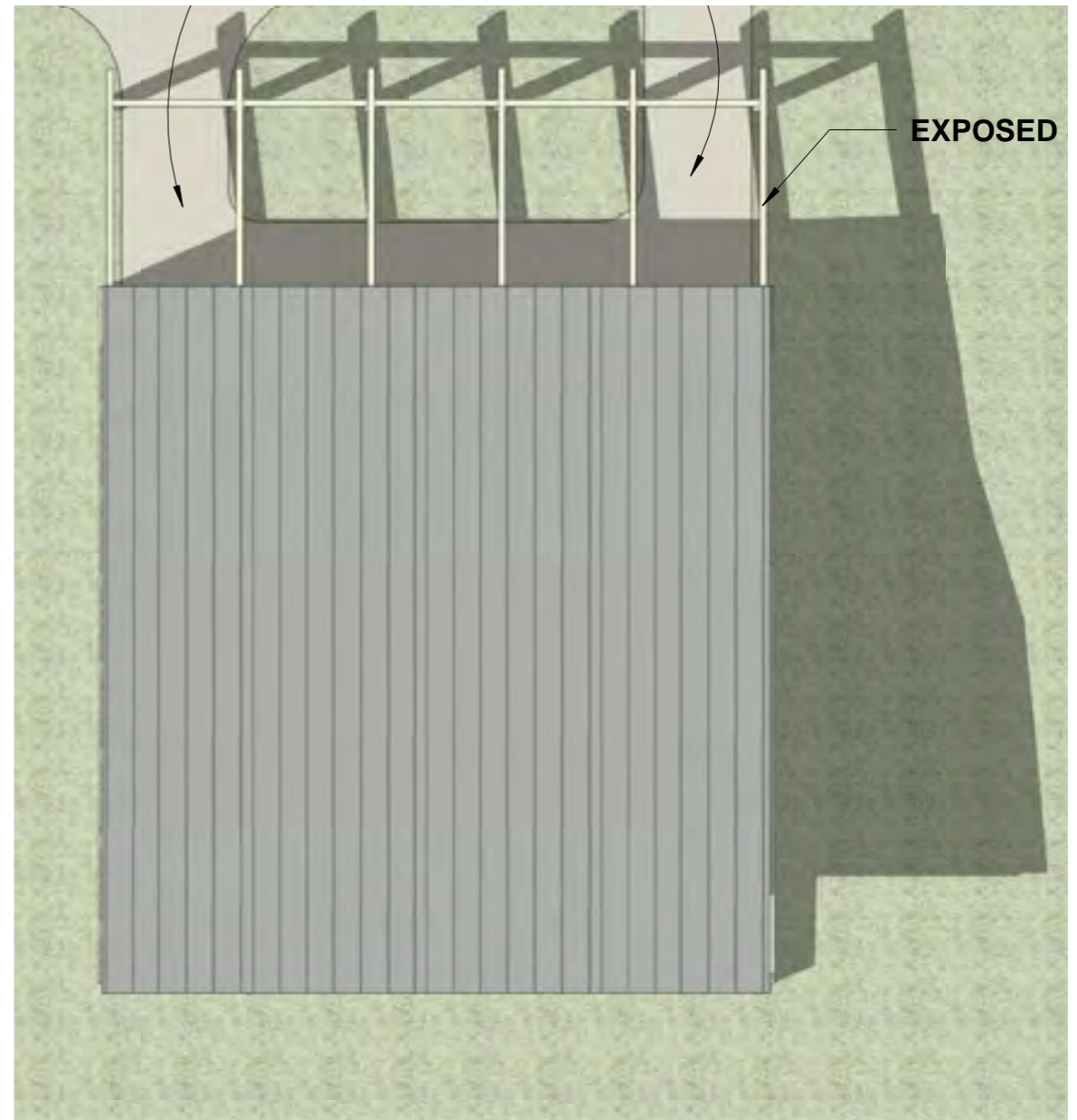


ARCHITECTURAL CONCEPT

PLANS



STAGE FLOOR PLAN

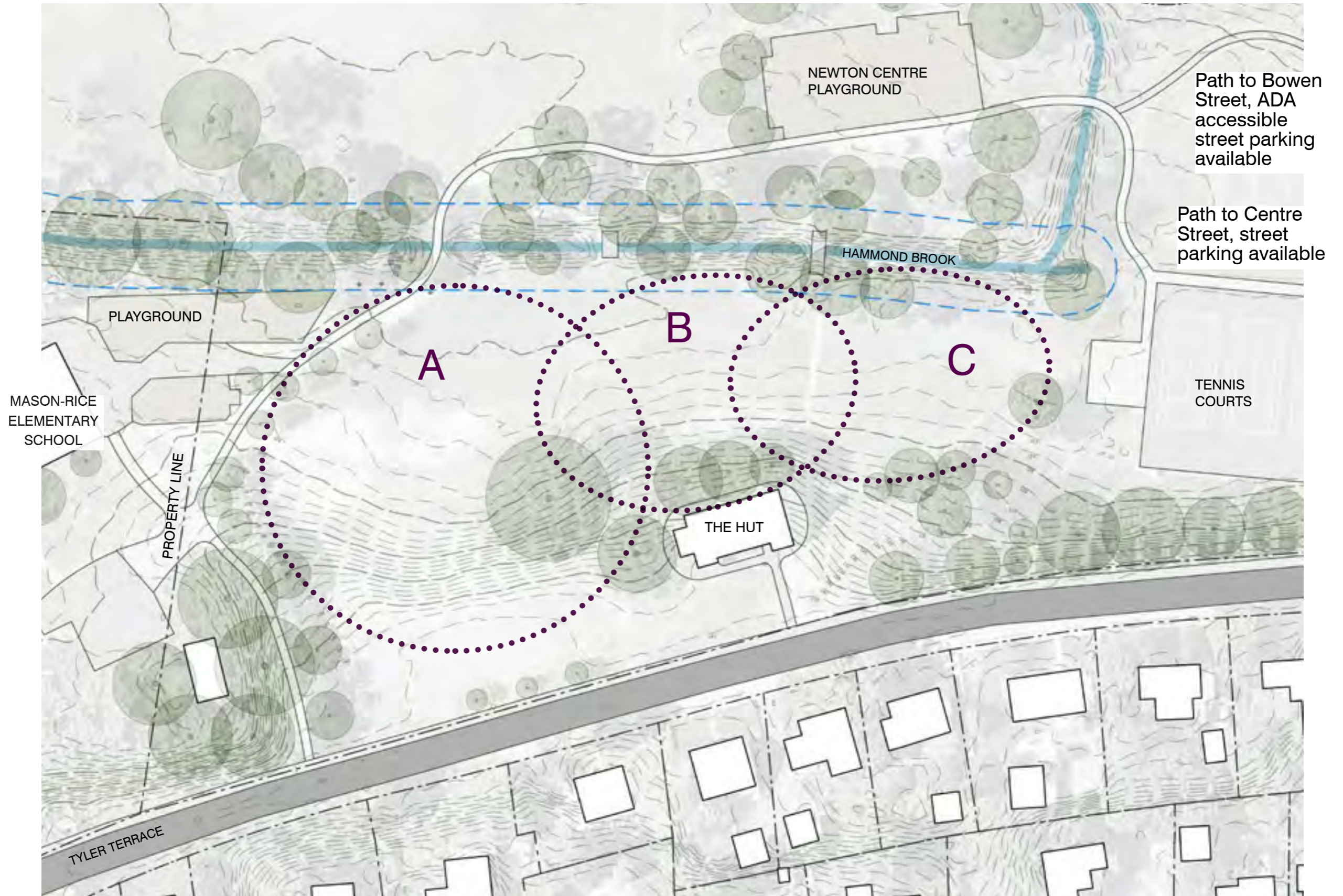


SITE PLAN

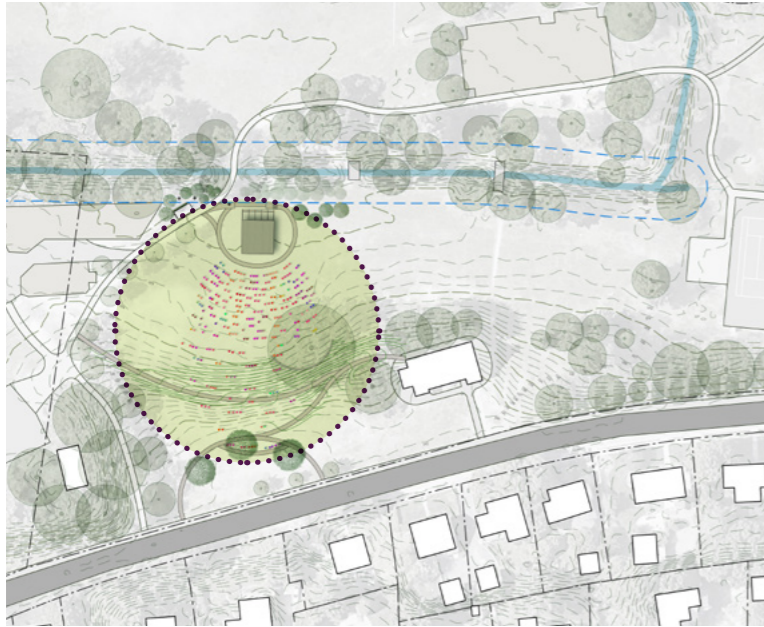
NEWTON CENTRE BOWL PAVILION
LANDSCAPE CONCEPTS

LOCATION OPTIONS
SITE PLANS
SITE SECTIONS

EXISTING CONDITIONS Location Options



SITE ANALYSIS Location Options



PROS OF LOCATION A

- Natural bowl-shaped topography
- Largest space for stage sizing, audience capacity, and layout flexibility
- Close connectivity to existing ADA path and ADA parking at Mason-Rice Elementary
- Existing drainage infrastructure nearby

CONS OF LOCATION A

- High community utilization of hill and open space for flexible activities
- Existing drainage problems
- Greatest sun exposure
- Close proximity and lack of barriers to loud adjacent uses
- Large open space more difficult for “nestling” stage

PROS OF LOCATION B

- Existing visual and auditory screening by the Hut from the street and residential neighborhood
- [Limited] access to Hut amenities including bathrooms and shade
- Large tree backdrop behind stage
- Generous distance on either side from loud uses at school and sport courts

CONS OF LOCATION B

- Farthest distance from any existing ADA walkway
- Smaller space with immovable boundary constraint at Hut
- Complications of Hut inaccessibility and lack of code compliance
- Sensitive Tree roots limit areas of construction and usable lawn space
- Sound may reverberate off building
- Divides expansive lawn

PROS OF LOCATION C

- Good existing drainage
- Shade, visual buffer, and sense of prospect-refuge provided by existing evergreen trees
- Closest connection to ADA designated parking at Bowen Street
- Close playground provides child entertainment
- Closest to town center

CONS OF LOCATION C

- Distance from existing ADA pathways
- Farthest distance from Mason Rice Elementary parking lot
- Close proximity to loud sport-court uses and playground
- Convex hill shape and flat open space, less like a bowl
- Stage faces directly west (evening sun will be in performer’s faces)

SITE ANALYSIS Location Options

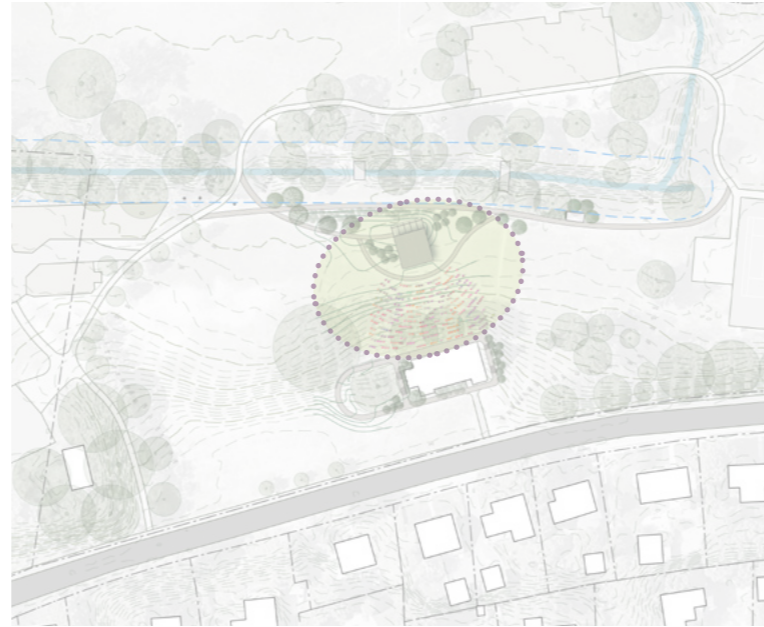


PROS OF LOCATION A

- Natural bowl-shaped topography
- Largest space for stage sizing, audience capacity, and layout flexibility
- Close connectivity to existing ADA path and ADA parking at Mason-Rice Elementary
- Existing drainage infrastructure nearby

CONS OF LOCATION A

- High community utilization of hill and open space for flexible activities
- Existing drainage problems
- Greatest sun exposure
- Close proximity and lack of barriers to loud adjacent uses
- Large open space more difficult for “nestling” stage



PROS OF LOCATION B

- Existing visual and auditory screening by the Hut from the street and residential neighborhood
- [Limited] access to Hut amenities including bathrooms and shade
- Large tree backdrop behind stage
- Generous distance on either side from loud uses at school and sport courts

CONS OF LOCATION B

- Farthest distance from any existing ADA walkway
- Smaller space with immovable boundary constraint at Hut
- Complications of Hut inaccessibility and lack of code compliance
- Sensitive Tree roots limit areas of construction and usable lawn space
- Sound may reverberate off building
- Divides expansive lawn



PROS OF LOCATION C

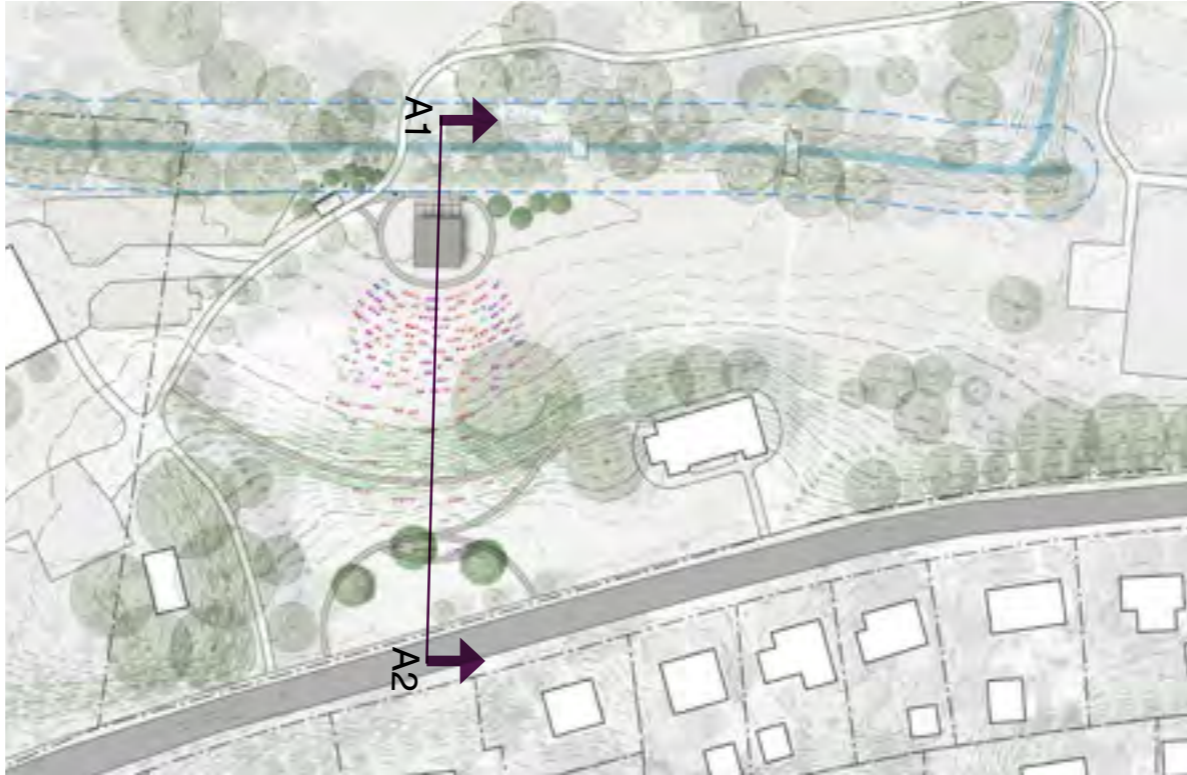
- Good existing drainage
- Shade, visual buffer, and sense of prospect-refuge provided by existing evergreen trees
- Closest connection to ADA designated parking at Bowen Street
- Close playground provides child entertainment
- Closest to town center

CONS OF LOCATION C

- Distance from existing ADA pathways
- Farthest distance from Mason Rice Elementary parking lot
- Close proximity to loud sport-court uses and playground
- Convex hill shape and flat open space, less like a bowl
- Stage faces directly west (evening sun will be in performer’s faces)

SITE SECTION

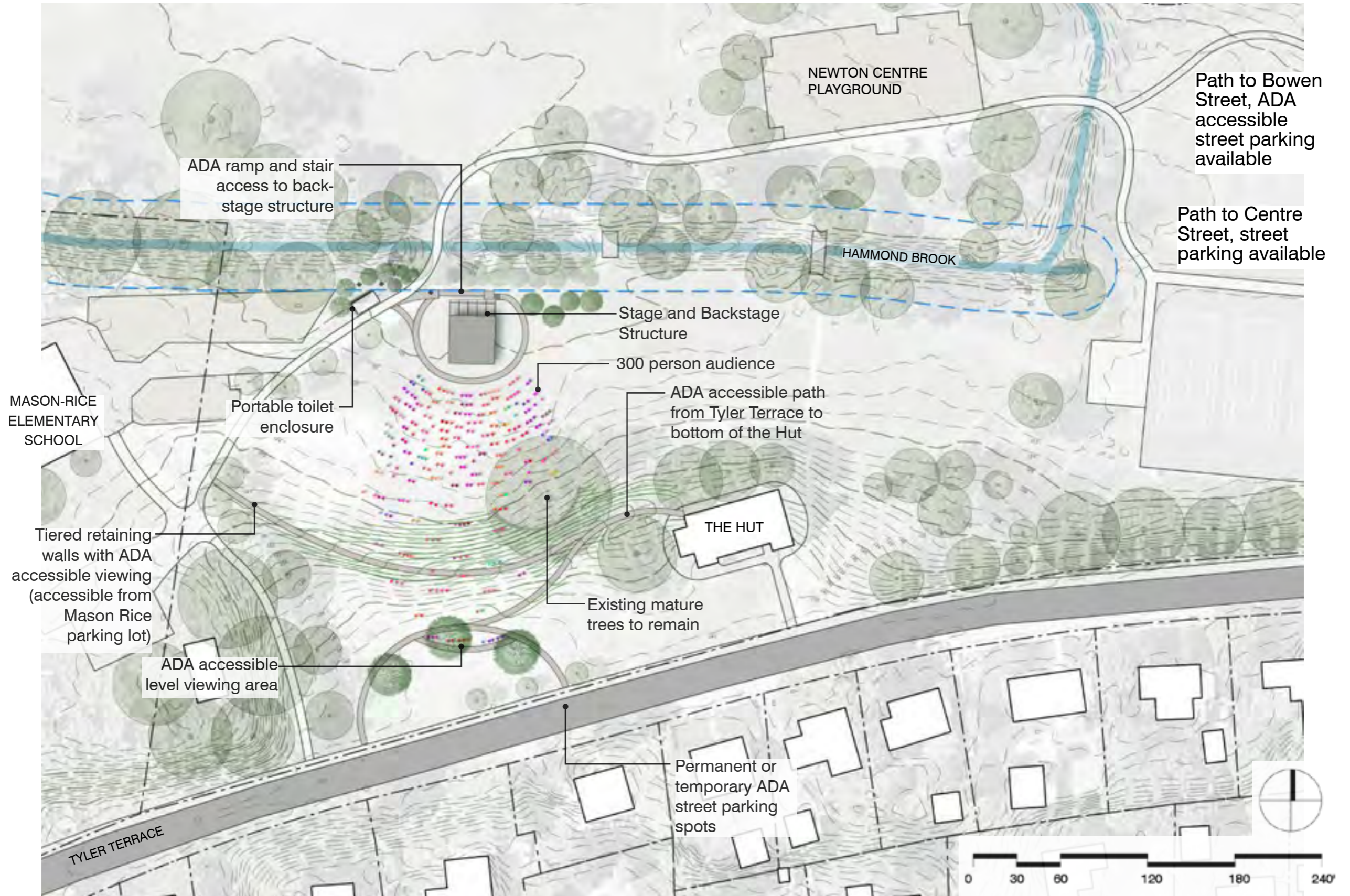
Location A



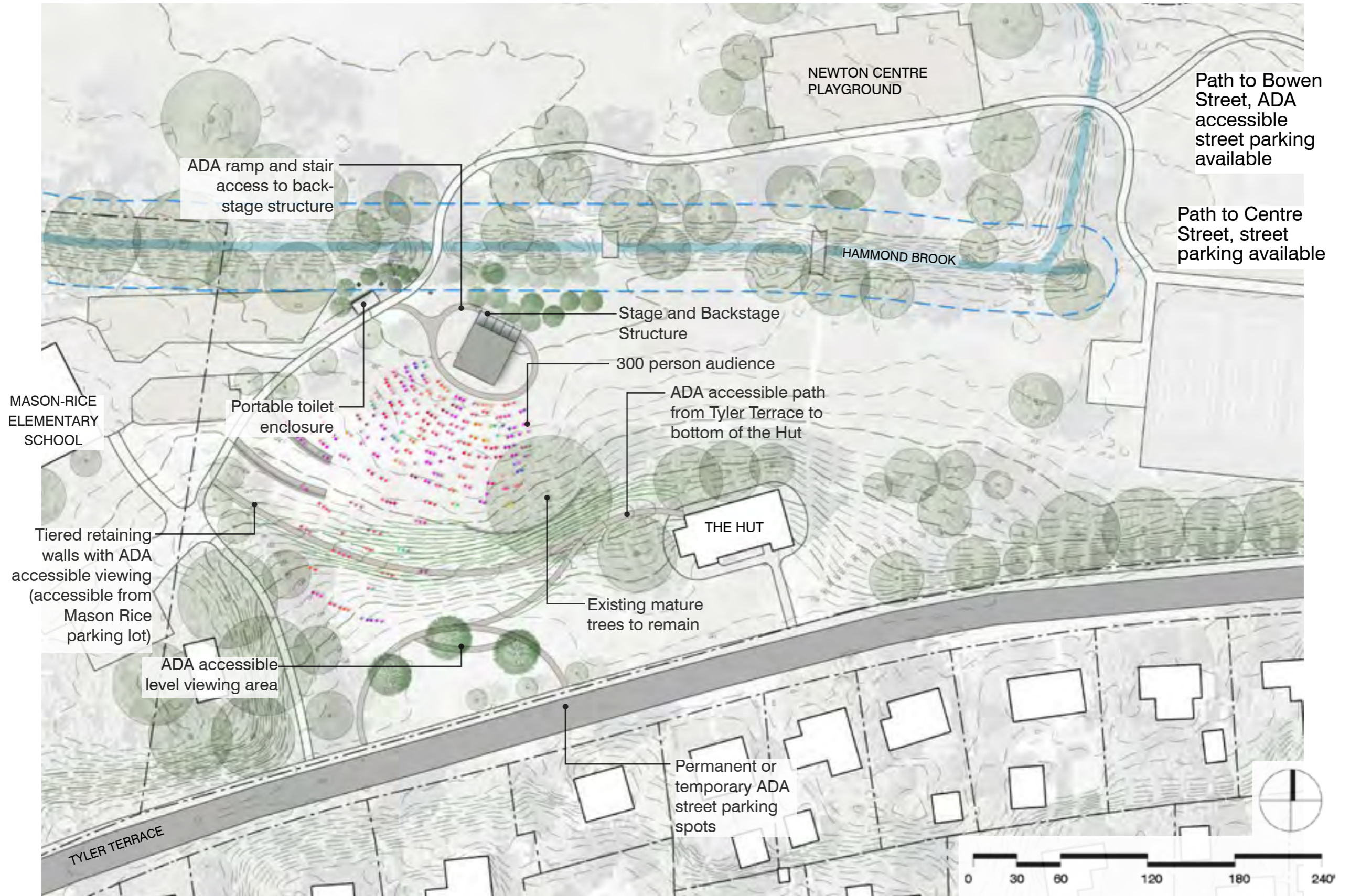
A1

A2

CONCEPT DESIGN Location A

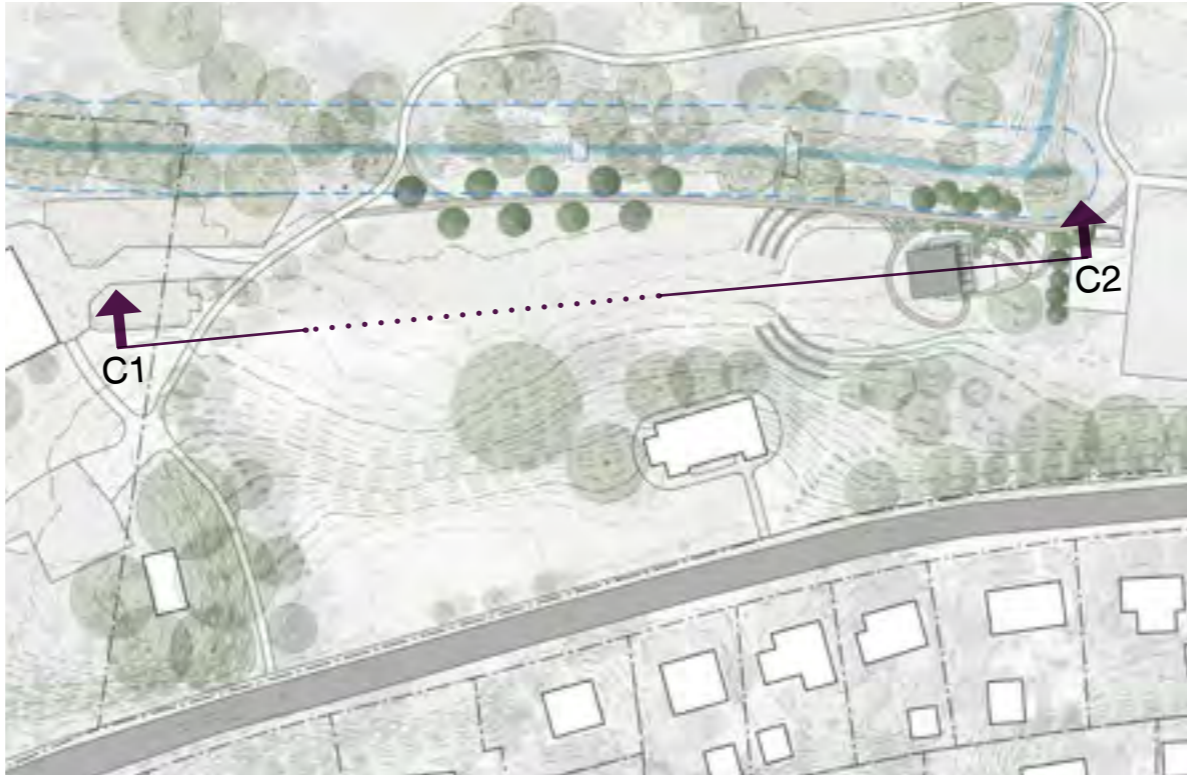


CONCEPT DESIGN Location A - Alternate

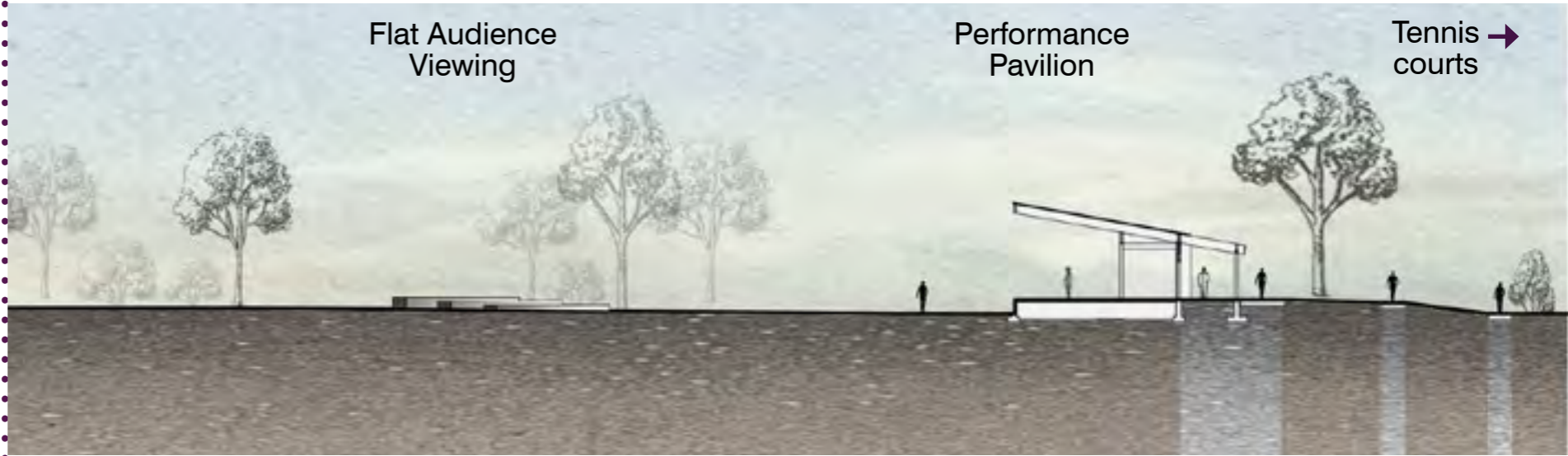


SITE SECTION

Location C

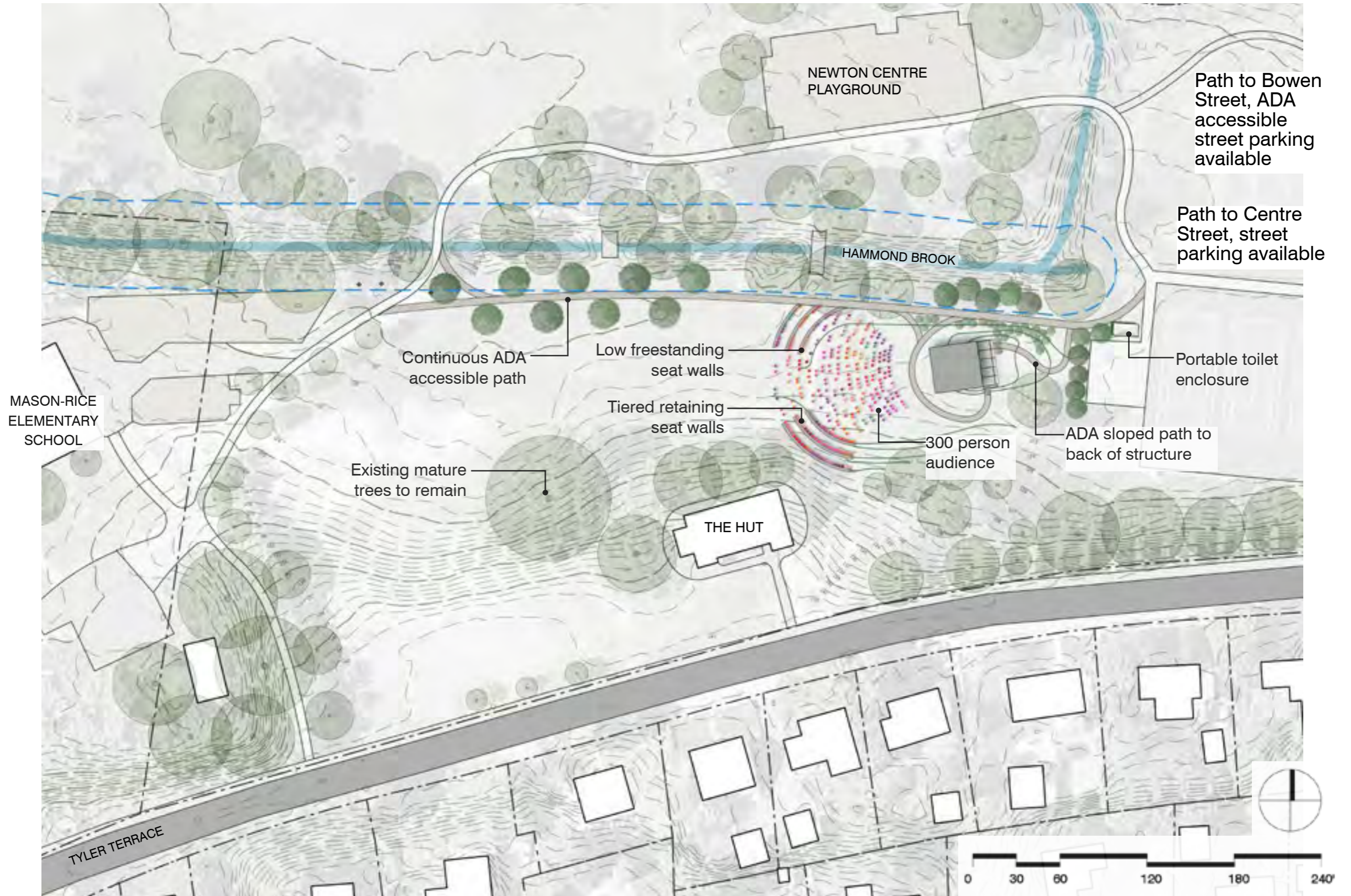


C1



C2

CONCEPT DESIGN Location C



CONCEPT DESIGN Location C - Alternate

