

# IMPROVEMENTS TO **ALBEMARLE PLAYGROUND**

---

**COMMUNITY MEETING**

**JUNE 02, 2022**



# AGENDA

---

## **GOALS, SCHEDULE & PROJECT BACKGROUND**

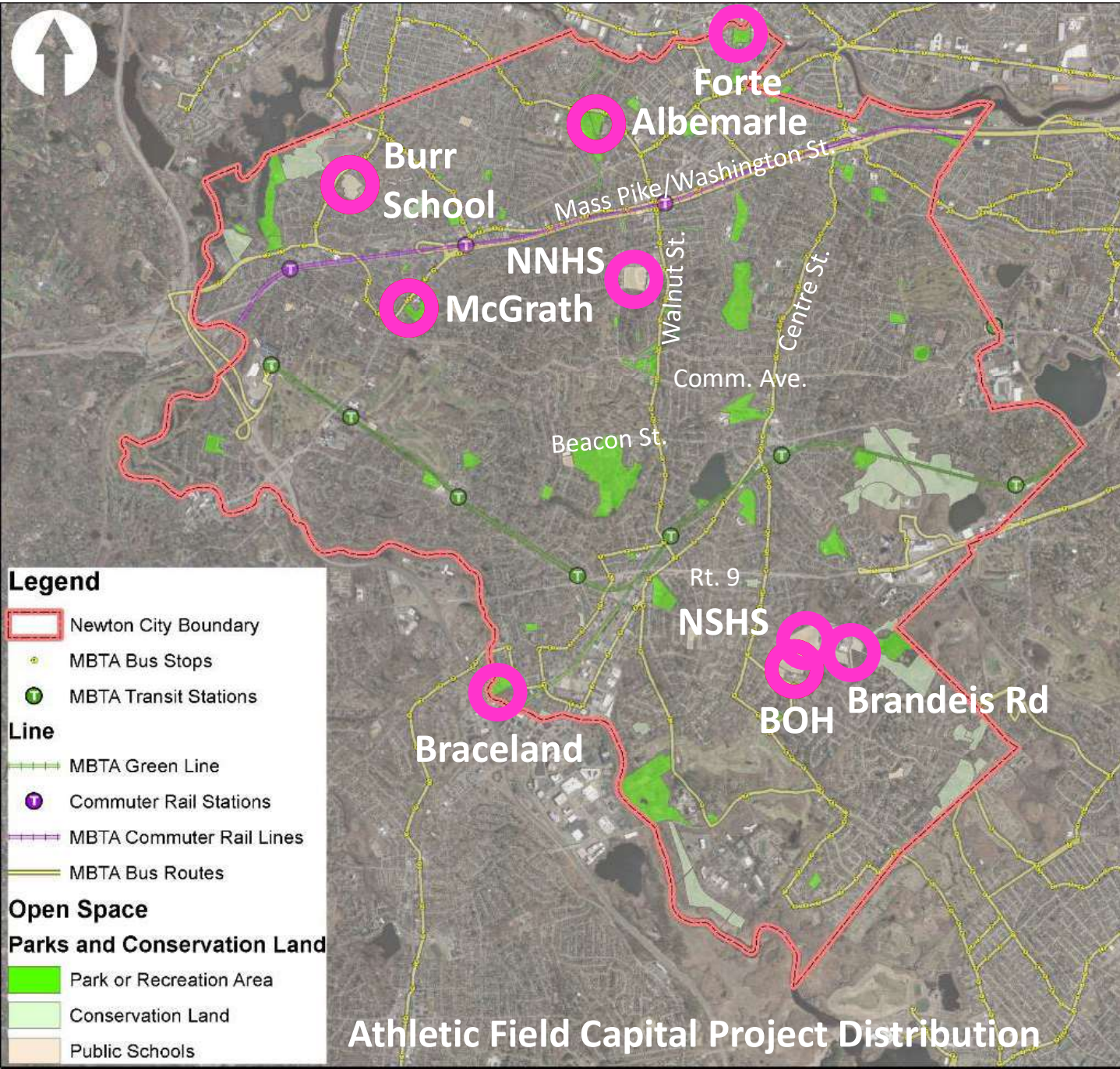
## **WHAT WE HEARD AT THE 5/3/2022 COMMUNITY MEETING**

## **UPDATED CONCEPTS**

## **DISCUSSION & NEXT STEPS**

## **APPENDIX**

- **PREVIOUS CONCEPT ITERATIONS**
- **SURVEY RESULTS**
- **FIELD CAPACITY AT ALBEMARLE PARK AND OTHER SITES**
- **COMMUNITY MEETING #1 PRESENTATION**



**5-YEAR STRATEGIC PLAN**  
**PROJECT DISTRIBUTION:**

- ALBEMARLE PARK
- FORTE PARK
- BURR SCHOOL
- BROWN/OAK HILL FIELDS
- MCGRATH PARK
- BOBBY BRACELAND
- NEWTON SOUTH BRANDEIS RD. FIELD LIGHTING
- NEWTON NORTH TIGER STADIUM LIGHTING
- NSHS SYNTHETIC TURF REPLACEMENT
- NNHS SYNTHETIC TURF REPLACEMENT

**TOTAL: 10 LOCATIONS**

Newton Parks, Recreation and Culture Department  
**Athletic Fields Capital Improvement Plan**

# PROJECT TEAM

## PARKS, RECREATION & CULTURE

**Nicole Banks** Commissioner

**Luis Perez Demorizi** Director of Parks and Open Space

**Greg Mellett** Assistant Director of Parks and Open Space

**Derek Mannion** Ground Superintendent

**Robert McClary** Turf Specialist

## LAW DEPARTMENT

**Jini Fairley** City of Newton  
ADA/504 Coordinator

## DEPT. OF PUBLIC WORKS

**Maria Rose** Environmental Engineer

## MAYOR'S OFFICE

**Jonathan Yeo** Chief Operating Officer

## CONSERVATION COMMISSION

**Jennifer Steel** Chief Environmental Planner / Conservation Commission Agent

## NEWTON PUBLIC SCHOOLS

**Stephanie Gilman** Director of Planning, Project Management and Sustainability

**Michael Jackson** Newton North High School Athletic Director

**Jackie Mann** Principal, F.A. Day Middle School

## WESTON & SAMPSON

**Brandon Kunkel** Landscape Architecture Practice Leader

**Cassie Bethoney** Project Manager and Landscape Architect

**Yuanbin Wang** Landscape Designer

# PROJECT GOALS

## FIELDS AND COURTS

- Field and site layout reconfigurations to maximize permitted field uses
- Reduce overlapping field uses
- Optimize court locations and keep them together to the greatest extent possible.

## GENERAL PARK AMENITIES

- Ensure the overall park amenities are universally accessible
- Create trail and multiuse path connections (bike, ped, bus, service) to adjacent properties and streets
- Plant new trees and protect and prune existing trees for health and reinvigoration

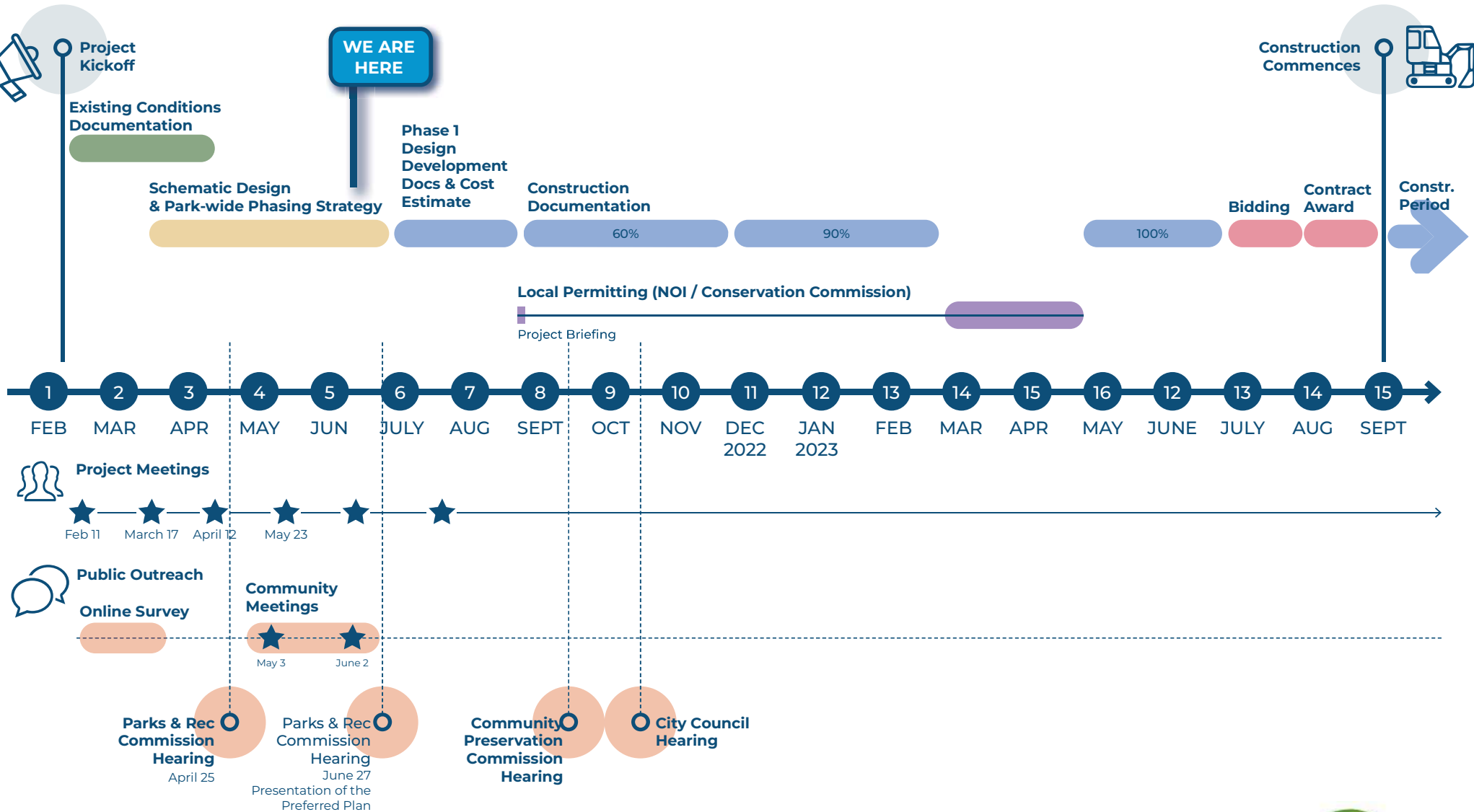
## UTILITY INFRASTRUCTURE

- Provide new state-of-the-art sports lighting; simplify the park's overall electrical service
- Provide on-site stormwater management and flood storage capacity

## IMPLEMENTATION / DESIGN COORDINATION

- Provide a staged approach to implementation
- Work in concert with Pool Design team

# ANTICIPATED DESIGN AND PLANNING SCHEDULE



**Note:**  
The MVP stormwater grant conceptual design was awarded to the project by the CRWA

# WHAT WE HEARD - PRIOR TO THE COMMUNITY MEETING

## FIELDS AND COURTS

- Focus on placement of multipurpose rectangular fields, with one dedicated as synthetic turf.
- Retain the open feel of the area south of the pool.
- Include improvements to backstops, accessible dug out and overall refreshing of the ball diamonds; retain two mature oak trees
- Include / consider approximate backstop, netting, etc. locations for ball diamonds and multipurpose fields (for movement of foul balls, etc.)
- Review Avery Woods deed in case some work is required on parcel
- Consider replacing tennis courts with pickleball courts
- Ensure synthetic turf fields accommodates all multipurpose sports (football, soccer, lacrosse, ultimate disk).
- Retain the existing Middle School track and multiuse field south of Gath without pedestrian pass throughs.
- Consider the challenges around locating Burke next to Murphy (lighting, netting requirements)
- Show field dimensions.

## GENERAL PARK AMENITIES

- Ensure there is a dedicated perimeter walking loop.
- Evaluate current parking space requirements to accommodate proposed field layouts.

## UTILITY INFRASTRUCTURE

- Irrigation wells on site will be used.
- Add pedestrian-scale lighting along pathways throughout the entire complex.

## IMPLEMENTATION / DESIGN COORDINATION

- Consider potential funding sources for synthetic turf field and other improvements.

# INPUT FROM THE 5/3/2022 COMMUNITY MEETING

## FIELDS AND COURTS

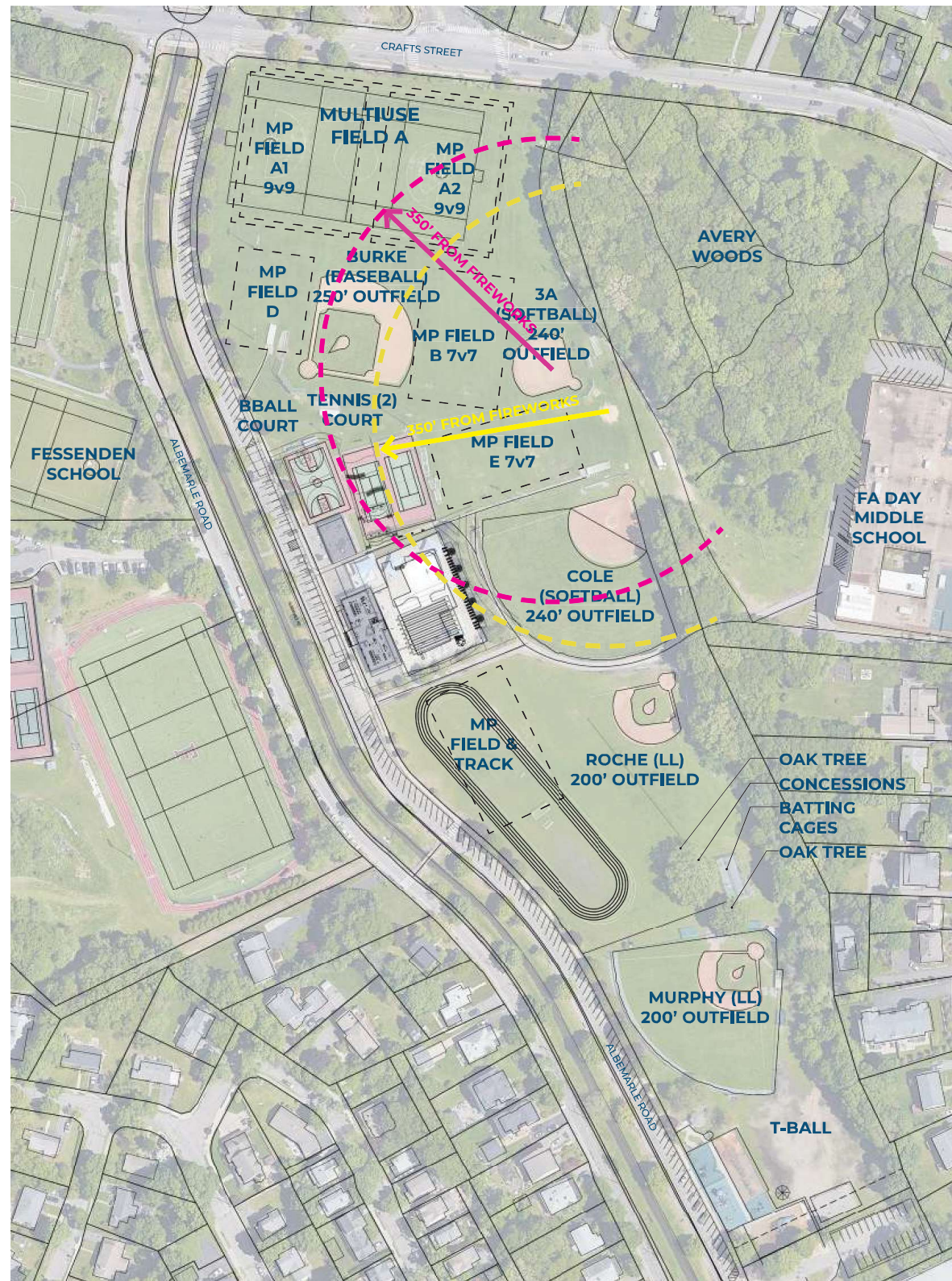
- Balance needs between rectangular sports and ballfield leagues. Compromise amongst the leagues will be needed for successful outcomes in the improvement program here.
- Locating Burke south of Gath will be a challenge with playability in the outfield (conflicting with Albemarle Road).
- Expand the number of pickleball courts. Keep them together.
- For multipurpose fields, focus on soccer, LAX, and other sports. Permanent striping for football is not needed.
- Consider a space for T-ball on site.
- Define what 'refreshed' means if a ballfield stays in place but sees some improvements.

## GENERAL PARK AMENITIES

- Create opportunities to formalize storage areas, shield unwanted views (e.g. restrooms), etc. to provide good distribution, support accessibility and clean up / organize the park.
- Avery Woods should be protected / not impacted through the course of these improvements.



# EXISTING CONDITIONS PLAN



Key

----- Newton Youth Soccer Permitted Fields



# REVISED CONCEPT ALTERNATIVE 1

## Existing to Remain -

- Murphy (Little League) - refreshed
- Roche (Little League) - refreshed and adjustments made to accommodate softball
- Cole (softball) - refreshed
- Multipurpose (MP) field and track
- Concessions and batting cages at Murphy
- Southern end playgrounds
- Two oaks north of Murphy

## Relocated -

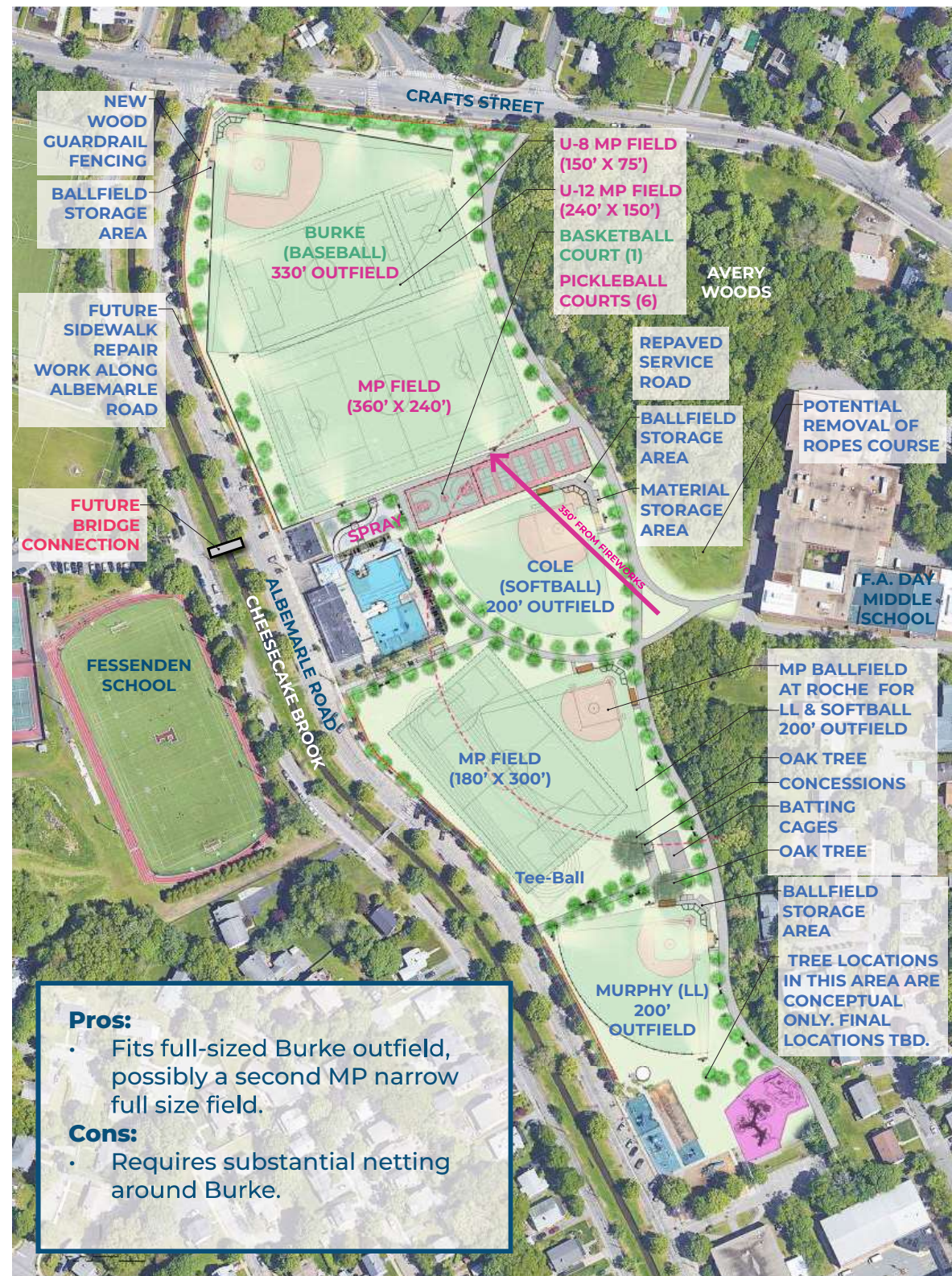
- Burke (baseball) reoriented; outfield expanded
- Basketball court

## New -

- New MP field (E/W)
- New MP field overlays (E/W)
- Six new pickleball courts
- Spray deck footprint
- Improved pathway circulation and accessible connections to batting cages, spectator seating, etc.
- Multiuse bike trail along eastern edge
- Bridge connection over Cheese Cake Brook to Fessenden (future project)
- New sports lighting (not shown)
- New irrigation

## Removed -

- 3A field (softball)
- Two tennis courts



### Pros:

- Fits full-sized Burke outfield, possibly a second MP narrow full size field.

### Cons:

- Requires substantial netting around Burke.



# REVISED CONCEPT ALTERNATIVE 2

## Existing to Remain -

- Murphy (Little League) - refreshed
- Roche (Little League) - refreshed and adjustments made to accommodate softball
- Cole (softball) - refreshed
- Multipurpose (MP) field on northern end - refreshed
- Multipurpose (MP) field and track south of Gath
- Concessions and batting cages at Murphy
- Southern end playgrounds
- Two oaks north of Murphy

## Relocated -

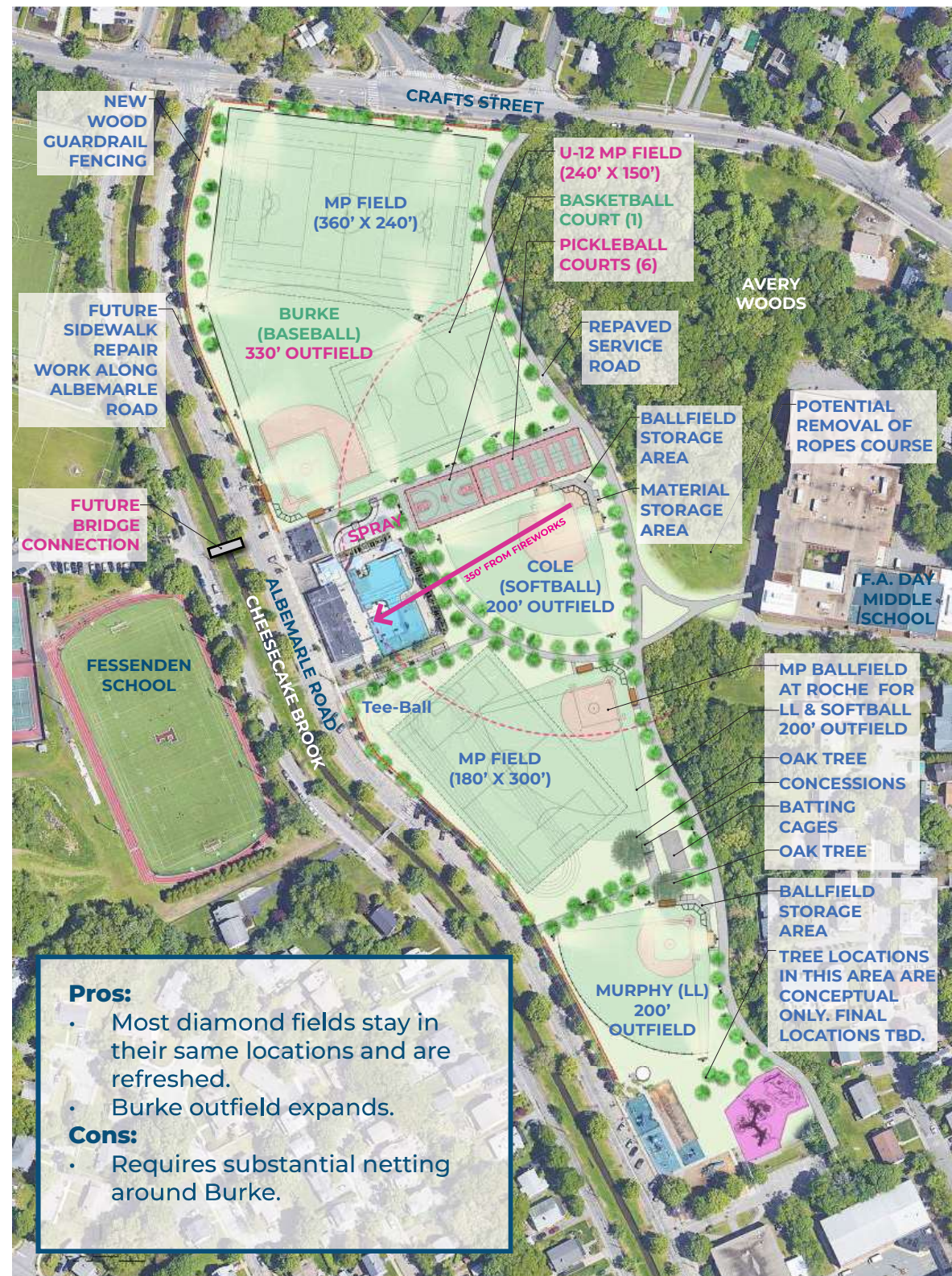
- Burke (baseball) reoriented; outfield expanded
- Basketball court

## New -

- New MP field overlay (E/W)
- Six new pickleball courts
- Spray deck footprint
- Improved pathway circulation and accessible connections to batting cages, spectator seating, etc.
- Multiuse bike trail along eastern edge
- Bridge connection over Cheese Cake Brook to Fessenden (future project)
- New sports lighting (not shown)
- New irrigation

## Removed -

- 3A field (softball)
- Two tennis courts



### Pros:

- Most diamond fields stay in their same locations and are refreshed.
- Burke outfield expands.

### Cons:

- Requires substantial netting around Burke.



# THANK YOU!

---

## Questions? Comments?

**For more project information, please contact:**  
[Athleticfieldprojects@newtonma.gov](mailto:Athleticfieldprojects@newtonma.gov)

**For additional information on the survey, please contact:**  
[FriendsofAlbemarle@gmail.com](mailto:FriendsofAlbemarle@gmail.com)



# APPENDIX

---

## **SURVEY RESULTS** →

Newton's Parks, Recreation & Culture, in collaboration with the Friends of Albemarle, conducted a survey from February 22, 2022 through March 13/22. The survey was circulated widely and there were 1,564 responses. Weston & Sampson analyzed the data and created the following graphs and charts.

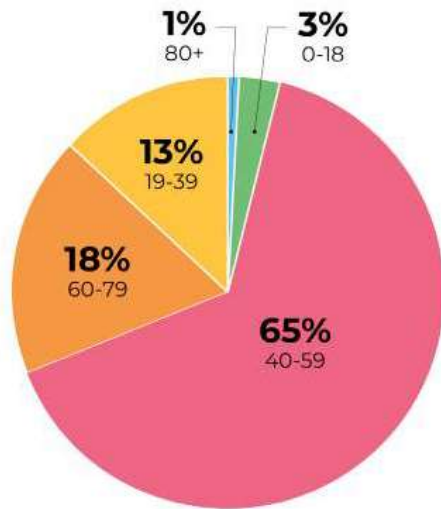
## **PERMITTED FIELD USAGE DATA**

## **PARKS & RECREATION COMMISSION 2/25 MEETING MINUTES**

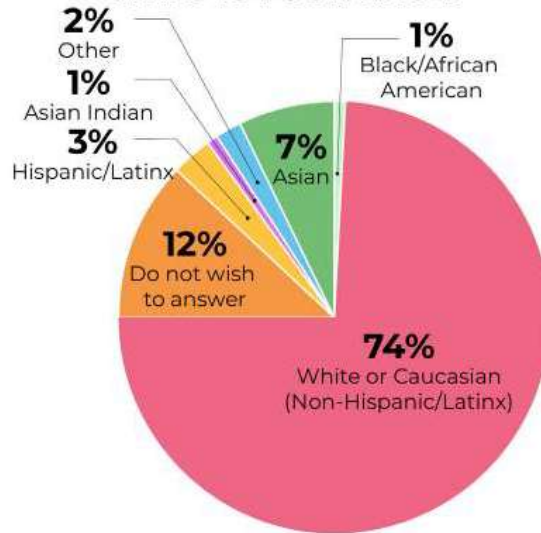
## **PREVIOUS CONCEPT ITERATIONS**

# SURVEY RESULTS

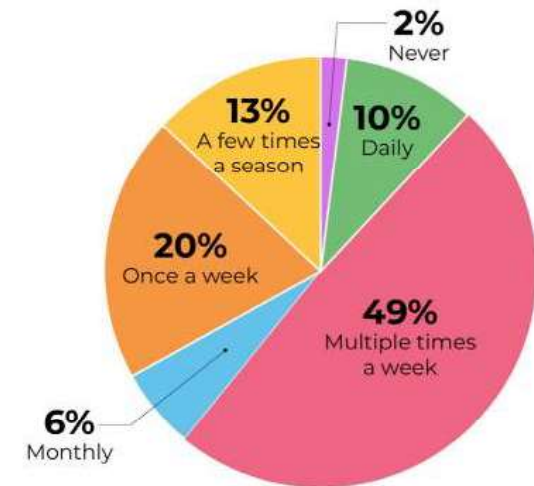
WHAT IS YOUR AGE?



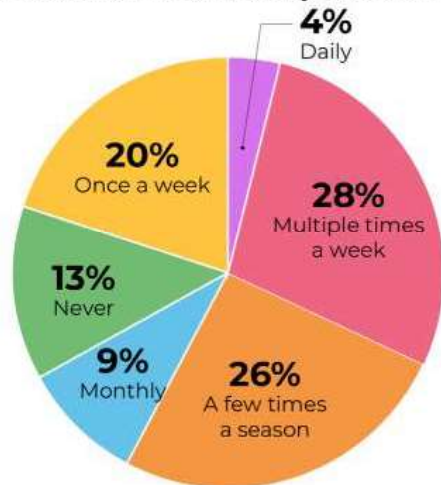
WHAT IS YOUR RACE?



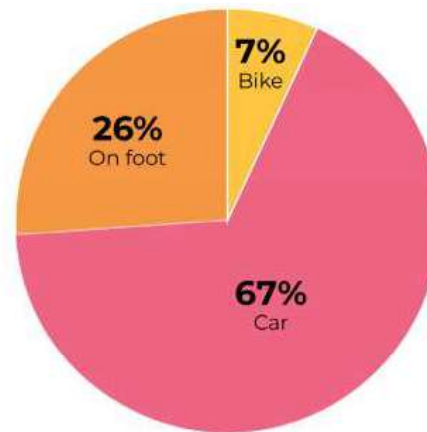
HOW OFTEN DO YOU VISIT ALBEMARLE IN SPRING / SUMMER?



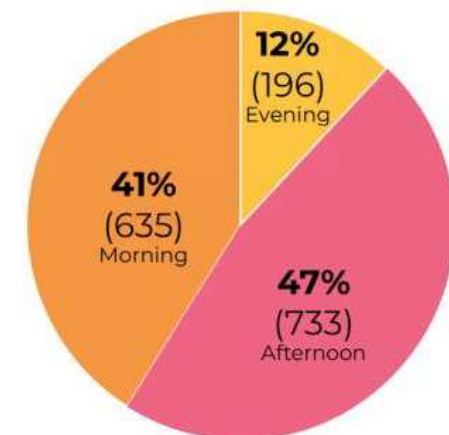
HOW OFTEN DO YOU VISIT ALBEMARLE IN FALL / WINTER?



HOW DO YOU MOST OFTEN GET TO ALBEMARLE?

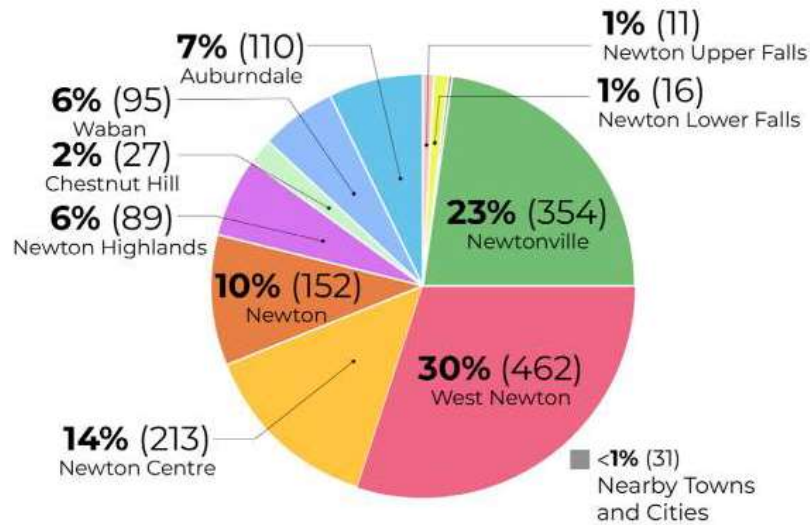


WHAT TIME OF DAY DO YOU VISIT?

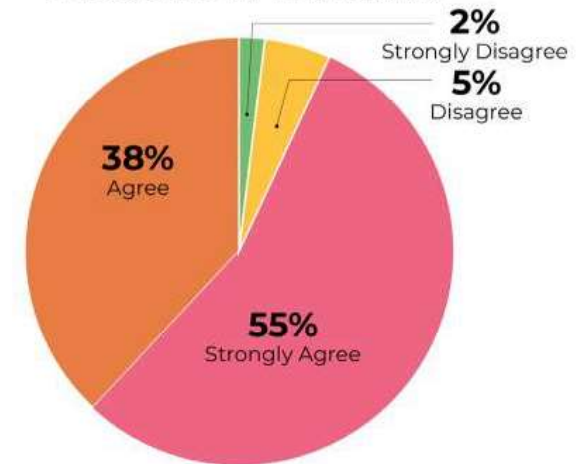


# SURVEY RESULTS

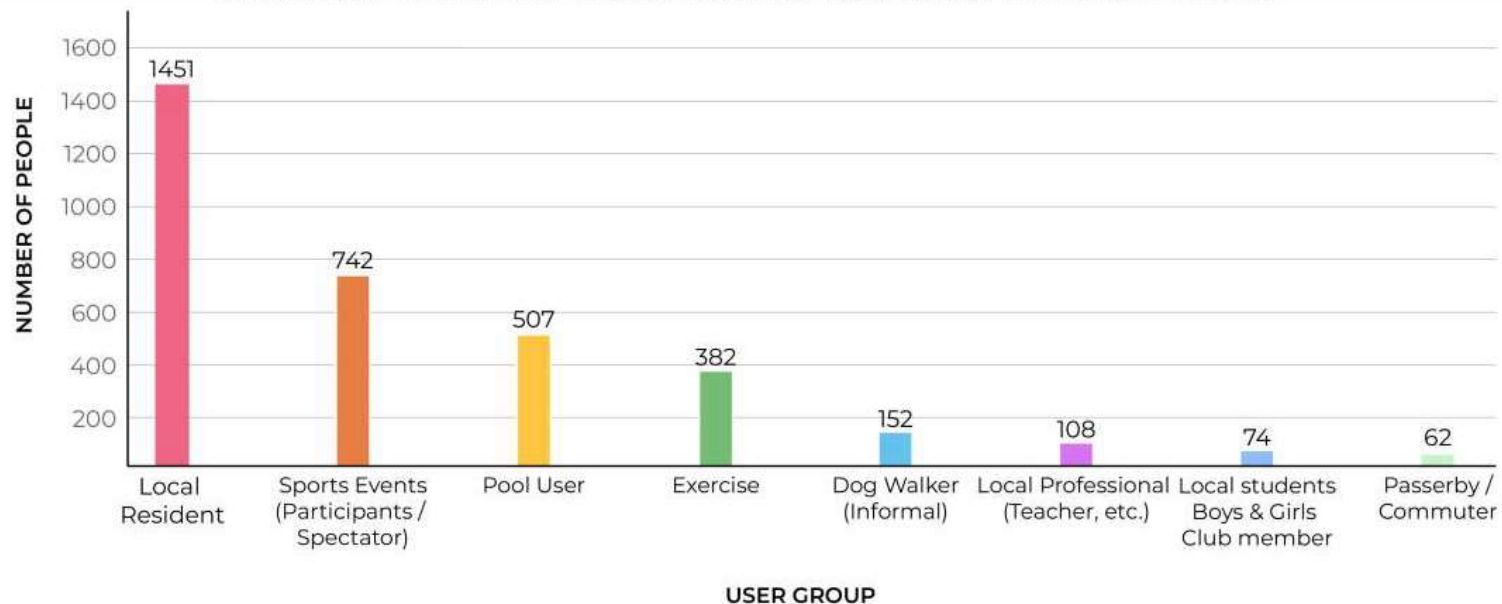
WHAT IS YOUR HOME ZIP CODE?



PLANS FOR ALBEMARLE SHOULD INCLUDE THE IMPACTS OF CLIMATE CHANGE AND FLOODING IN THIS AREA



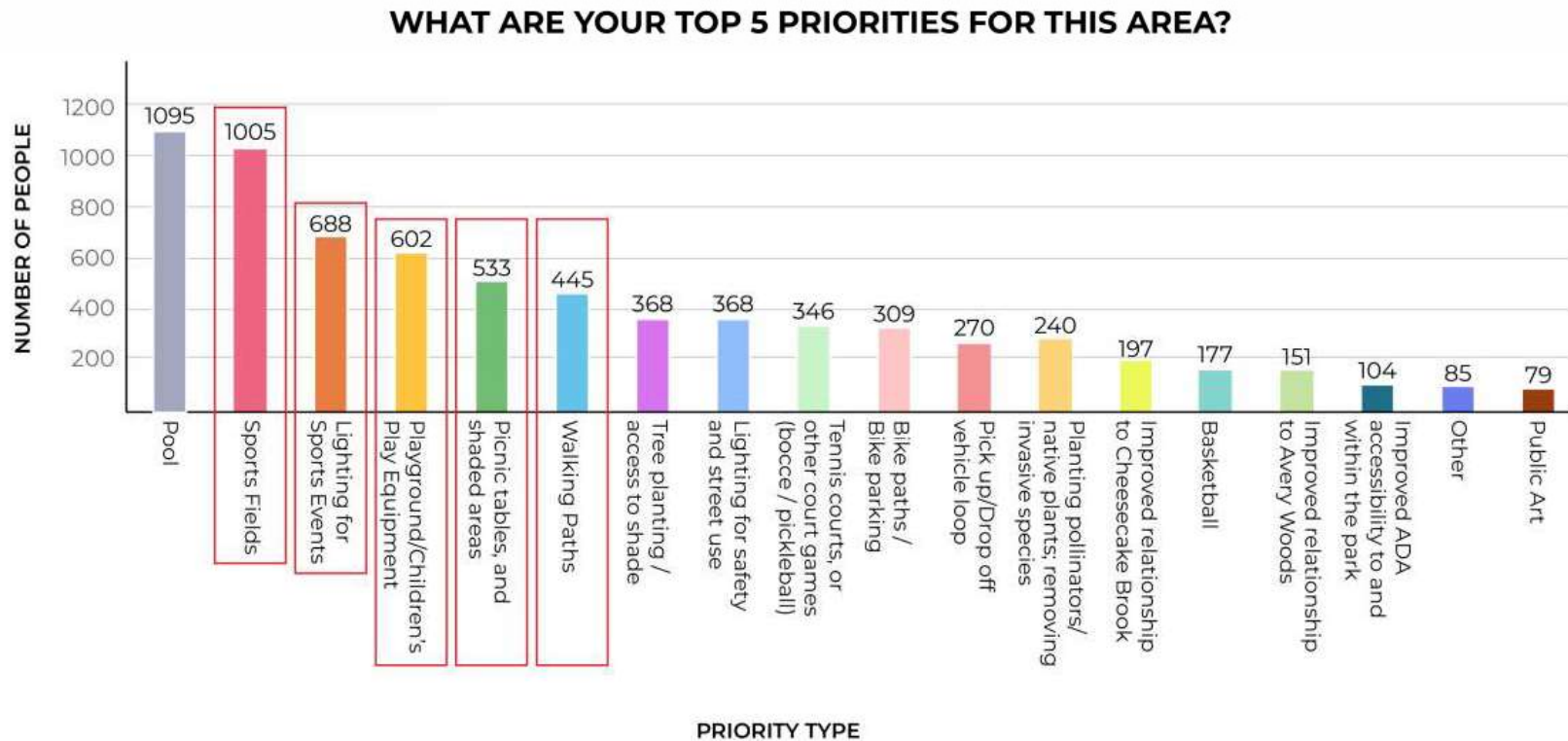
WHICH OF THESE USER GROUPS DO YOU MOST IDENTIFY WITH?



# SURVEY RESULTS

## Top 5 Community Survey Park Priorities

- Sports Fields
- Lighting
- Playgrounds
- Shaded Picnic Tables
- Walking Paths

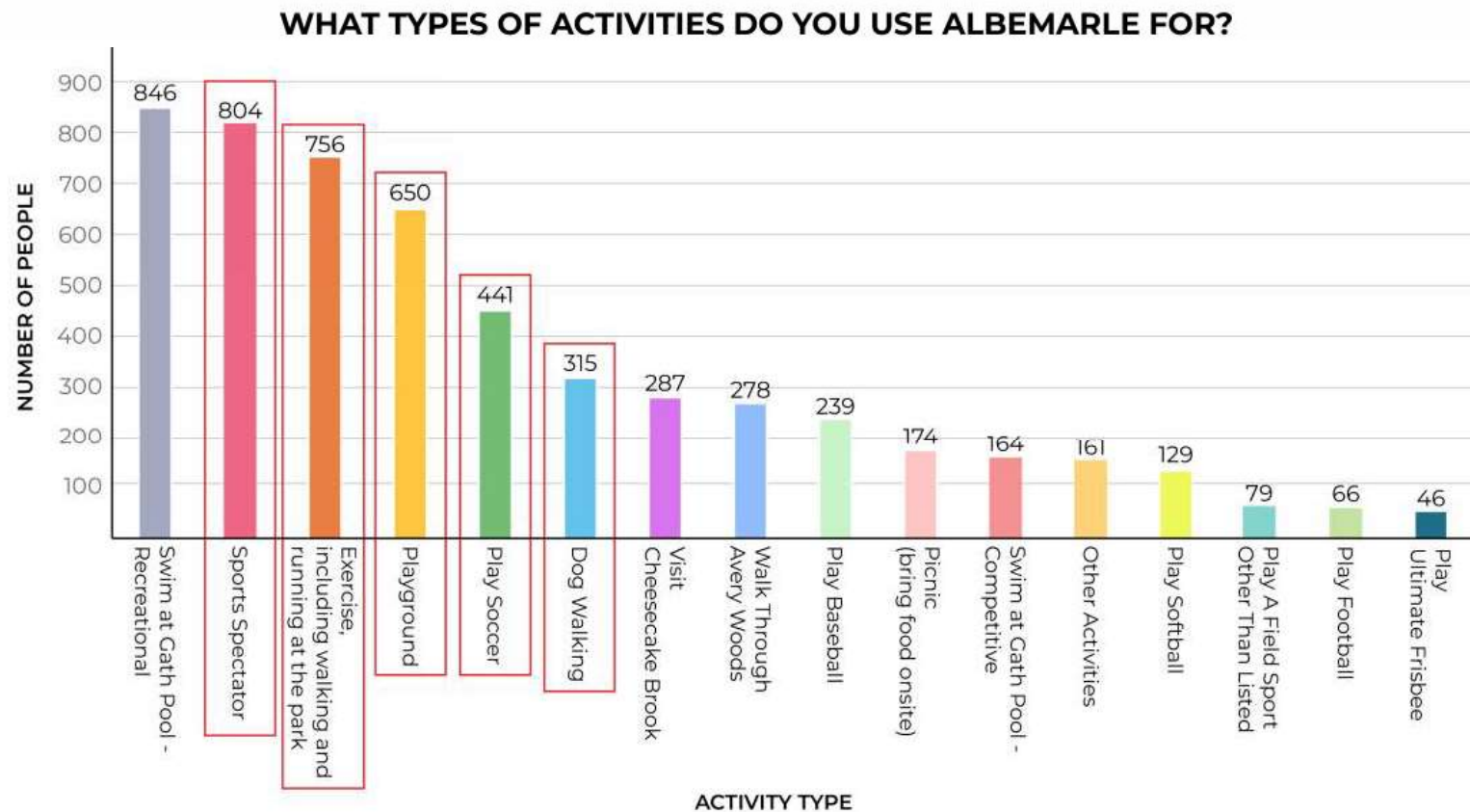




# SURVEY RESULTS

## Top 5 Community Survey Park Activities

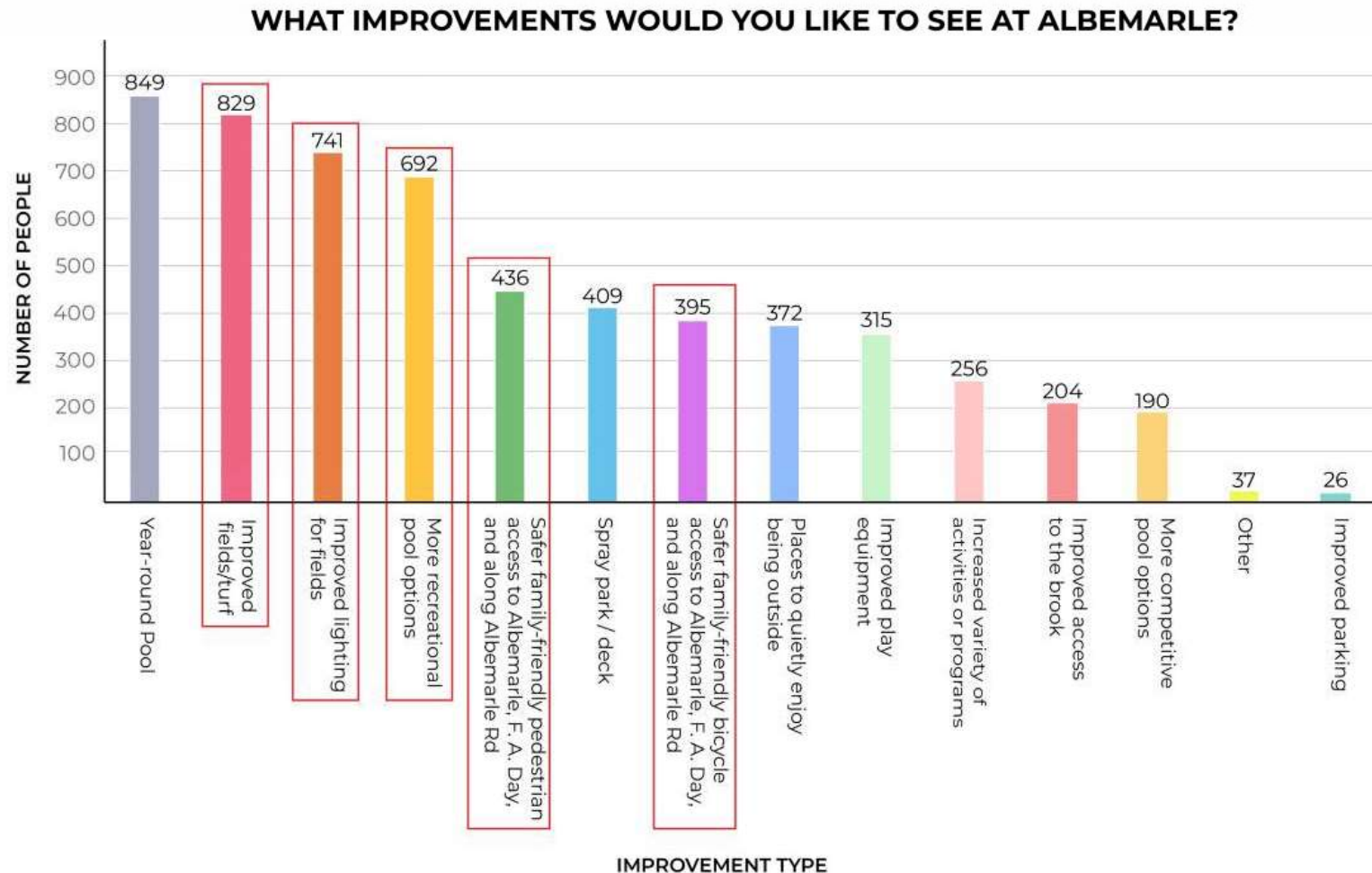
- Sports Spectator
- Exercise (Walking, Running, etc.)
- Playgrounds
- Play Soccer
- Dog Walking



# SURVEY RESULTS

## Top 5 Community Survey Park Improvements

- Sports Fields
- Improved Lighting
- More Recreational Pool Option
- Safer Pedestrian Access
- Safer Bicycle Access





# FIELD CAPACITY AT ALBEMARLE PARK AND OTHER SITES

Facility Name	Non-permitted stake holders	Key Permitted Stake Holders					
		Spring Users (April-June)	Total Spring Permitted Hours	Summer Users (July-August)	Total Summer Permitted Hours	Fall Users (Sept. - November)	Total Fall Permitted Hours
Albemarle Park 'Russell J. Halloin Sports and Recreation Complex'	F.A. Day Middle School students, playground users, passive users, tennis players, basketball players, general park users, pool users, safe route to school	Newton Little League; Newton LL Seniors; Senior Youth Baseball; Newton Girls Softball; Newton Youth Soccer; Newton Girls Soccer; BUDA Youth Frisbee; F.A. Day Middle School Athletics; Prime Baseball League; Babe Ruth Baseball Tryouts; Adult Cricket; Extra Innings Baseball Clinic	2905 hours	Newton Little League; Babe Ruth Baseball; Adult Cricket; Newton Girls Softball; Newton Community Ed - baseball; Boys and Girls Club; Extra Innings Baseball Clinic; Mustang Youth Football; American Legion Baseball; Prime Baseball; BUDA Youth Frisbee; Juventus Youth Soccer	1588 hours	Newton Little League; Newton LL Seniors; Adult Cricket; Newton Girls Softball; Mustang Youth Football; F.A. Day Middle School Athletics; Newton Youth Soccer; Newton Girls Soccer; Extra Innings Baseball Clinic; Lasell Baseball; NNHS Baseball captain's practice; BUDA Youth Frisbee; BUDA Adult Frisbee	2115.50 hours
Brown/Oak Hill Fields	Brown/Oak Hill middle school students, passive users, dog owners, runners, general field users	Brown/Oak Hill Athletics; NSHS Track- discus, javelin; Kindergarten Soccer; Newton Youth Soccer; Newton Girls Soccer; Newton Community Education	1898.50 hours	SMASH Volleyball Clinics; Newton Youth Soccer Clinics; Newton Girls Soccer Clinics; NSHS Fall preseason sports; Newton Community Education; LVC Volleyball	159 hours	Brown/Oak Hill Athletics; Kindergarten Soccer; Newton youth Soccer; Newton Girls Soccer; Newton Community Education; BC Grad Flag Football; Brute Rugby Club	1952 hours
Burr School	Burr school students, playground users, passive users, potentially dog owners, runners and general field users, safe route to school	Newton Public Schools; Newton Girls Softball; Newton Youth Soccer; Newton Girls Soccer; Burr PTO; NNHS Ultimate Frisbee	657 hours		0 hours	Newton Public Schools; Newton Youth Soccer; Newton Girls Soccer	253 hours
Richard J. McGrath Park	walkers, runners, dog owners	NNHS Boys LAX; Newton Boys lacrosse league; Newton Youth Soccer; Newton Girls Soccer; N CDS tennis; Maimonides tennis; Over 55 Pickleball; Over 55 Tennis; N.E. Surf Soccer; Newton Tennis; Learning Center After School PE; Belge-Friends soccer group	1092 hours	Boston Ski and Sports Club; Newton Tennis; Over 55 Pickleball; Over 55 Tennis	128 hours	Over 55 Pickleball; Over 55 Tennis; NNHS Boys Soccer; Newton Youth Soccer; Newton Girls Soccer; Learning Center After School PE; Belge-Friends soccer group	1008 hours

# PARKS & RECREATION COMMISSION 2/25 MEETING MINUTES

## 5. Albemarle Park Field Design Concepts

- Luis Perez Demorizi, Parks & Open Space Director, Cassie Bethany of Weston & Sampson, and Yuabin Wang, of Weston & Sampson presented the updated design for Albemarle Playground. The presentation may be viewed on-line: [www.newtonma.gov/fieldprojects](http://www.newtonma.gov/fieldprojects)
- Mr. Perez Demorizi commented this has been a very exciting project to work on. Tonight, is the informational meeting for the Commission. On May 3<sup>rd</sup> there will be a community meeting. Community meeting registration information is located: [www.newtonma.gov/parks](http://www.newtonma.gov/parks)
- The city has been awarded a grant for storm water management for Albemarle.
- Albemarle will not be meet all the needs requested for this area, PRC is working on a city-wide athletic field plan including several different locations
- Ms. Bethoney presented 4 design options, keeping in mind the following from previous community meeting comments and working with the Gath Pool Design Team & Storm Drain Team:
  - Reduce overlap
  - Use space in the best way possible
  - Make accessible
  - Optimize court location
  - Path connections
  - Plant trees
- The timeline is scheduled to complete the phase 1 design by August 22, 2022
- Mr. Feldhusen stated he likes all 4 concepts especially the pedestrian pathways and asked if the overall capacity changes through the concepts. Mr. Perez Demorizi replied we cannot calculate the capacity; we are relying on the survey and stakeholders for capacity numbers. Mr. Dunker commented league use rarely overlap. Commissioner Banks commented the PRC filed permits track participants and total permitted hours.
- Ms. Bethoney commented trends show field use changes over time.
- Ms. Gavis asked if the Albemarle master plan is chapter 1 and how does it relate to what is to come. Mr. Perez Demorizi stated we would like to get as much done in the master plan in one swoop, but construction may be several cycles. Ms. Gavis asked if the budget is planned 5-7 years out. Mr. Perez Demorizi stated we are not planning that far out.
- Commissioner Banks commented the master plan is important for the different uses, to see what fits where. How lights will be placed.
- Ms. Gavis commented she loves the connectivity of the paths is there any contiguous loops planned? Ms. Bethoney commented the design mostly gets there to the south end of the field. Mr. Perez Demorizi commented there are interior loops, we did not want the loops to impact the playing fields
- Mr. Johnson commented the user information presented does not include the swim team. Mr. Perez Demorizi replied that is correct, and we are aware of the swim team and the 4<sup>th</sup> of July celebration.
- Commissioner Banks commented pool use is a summer activity, the athletic field use is generally spring and fall activities.
- Ms. Wilkinson asked if there are additional fields added will there be sufficient parking. Commissioner Banks stated this could be an issue, but we would manage the traffic through scheduling and the city is working with Fessenden to add parking.
- Mr. Johnson asked in concepts A & B Burke Field is moved near Murphy Field would additional lights be added. Commissioner Banks replied yes, the field is currently lighted and would continue to be a lighted field. Mr. Dunker commented concept A & B are not workable options. The workable arc for little league older participants is 300', these layouts would have the balls being hit into the parking area or street. Mr. Perez Demorizi stated this issue would increase the need for netting.
- Mr. Rice asked if the 4 concepts would be cut down to 2-3 options. Mr. Perez Demorizi replied, the options would be whittled down with costs.
- Mr. Dunker asked if there are paths through Avery Woods. Mr. Perez Demorizi stated FA Day students have created a path. Chairman Magni commented the land deed may prevent any changes or uses of the property.
- Mr. Rice commented it will be nice to have a synthetic turf field on the north side of the city.
- Mr. Feldhusen asked about the trucks on the field for the 4<sup>th</sup> of July celebration. Mr. Perez Demorizi commented it does make it more of a challenge, especially the fireworks near synthetic turf.



Newton Parks, Recreation & Culture Department

# Athletic Fields Improvement Plan

Community Meeting # 1

Albemarle Park

October 20<sup>th</sup>, 2021

[athleticfields@newtonma.gov](mailto:athleticfields@newtonma.gov)

*Merchant Road Fields, Framingham – Example of quality grass turf fields*

# AGENDA

1

Athletic Fields Projects Overview

---

2

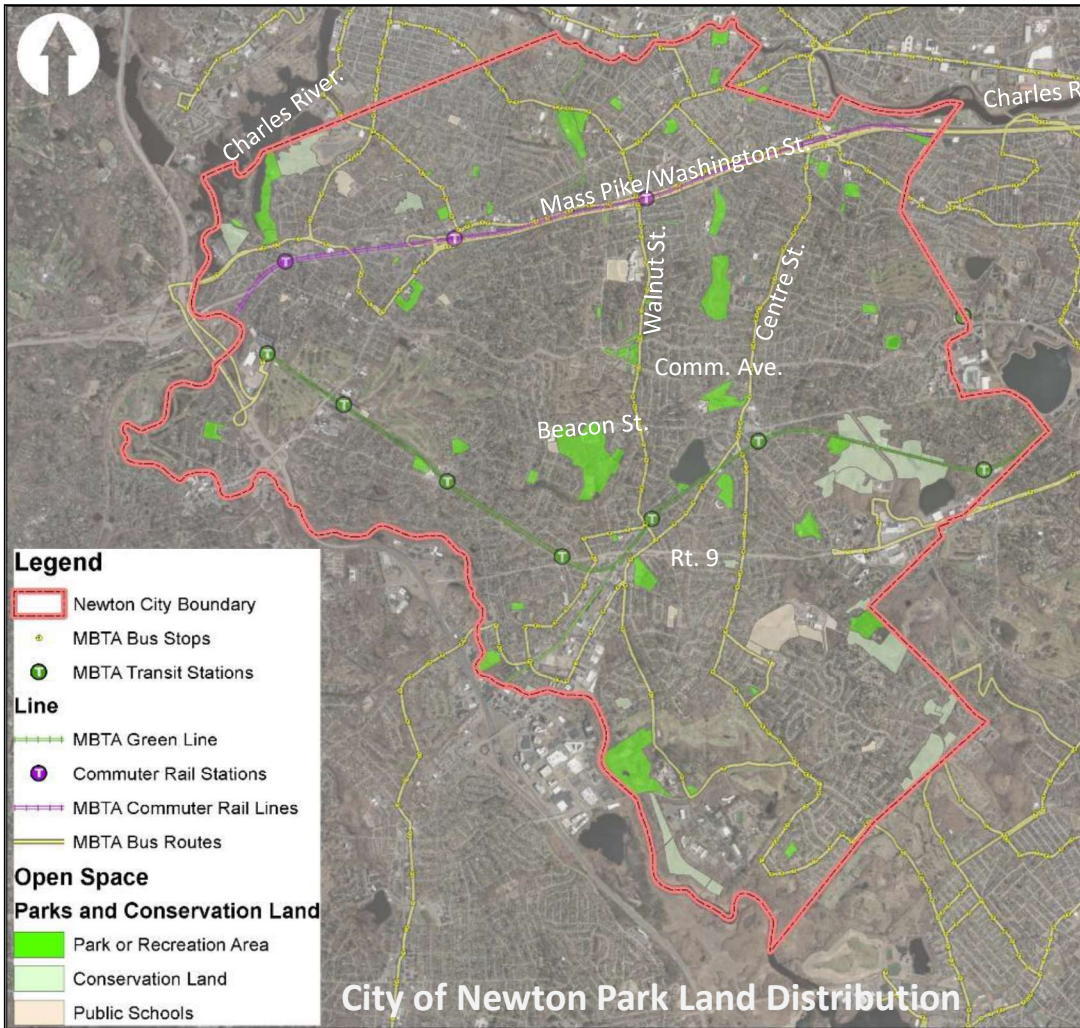
**Albemarle Park** Presentation

---

3

**Albemarle Park** Listening + Discussion

---



**Parks, Recreation & Culture Overview:**

- Manage and oversee nearly 600 Acres of park land with varying recreational interests including:
  - Aquatic facilities
  - Tracks + fields
  - Trails, pathways + safe routes to schools
  - Playgrounds + tot Lots
  - Field houses + community centers
  - Hard courts
  - Passive areas
  - Outdoor exercise equipment
  - Wooded areas
  - Outdoor challenge courses
  - Dog parks
  - Splash pads
  - Historic significance
  - Wetlands and waterways
- Spread across all Villages, Wards + School zones

Newton Parks, Recreation and Culture Department  
**Athletic Fields Capital Improvement Plan**





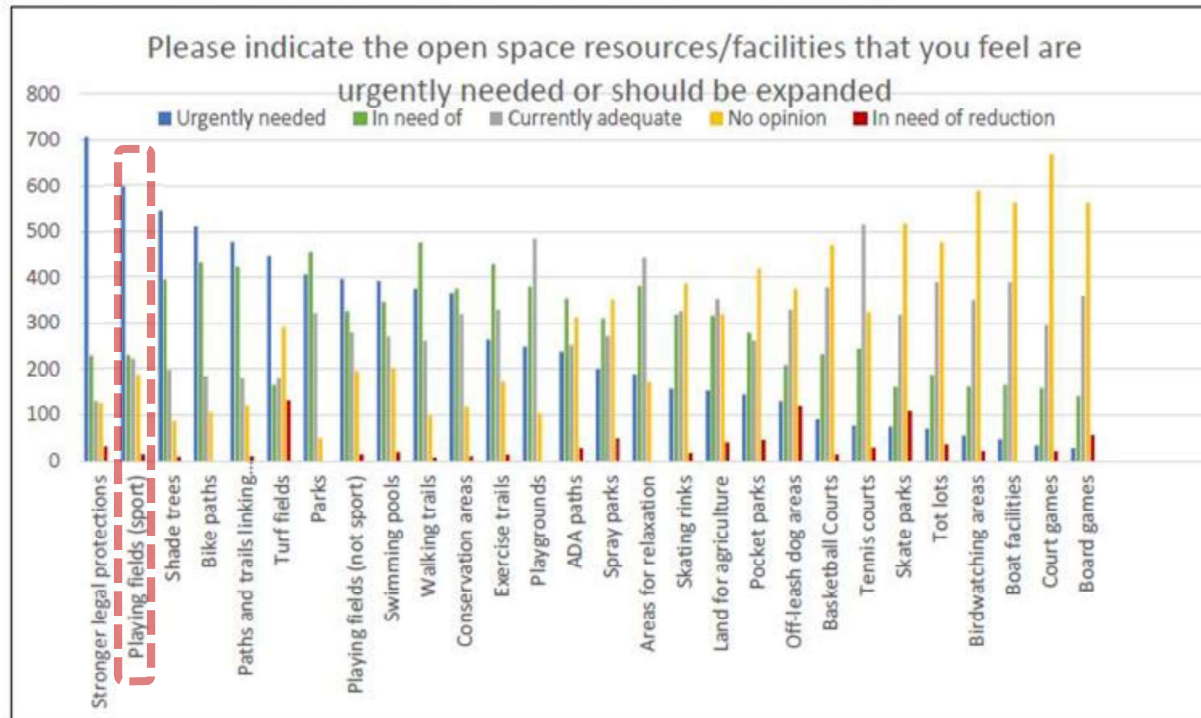
**Why improve athletic fields?**



**Current facilities experience little to no rest time and are overused**

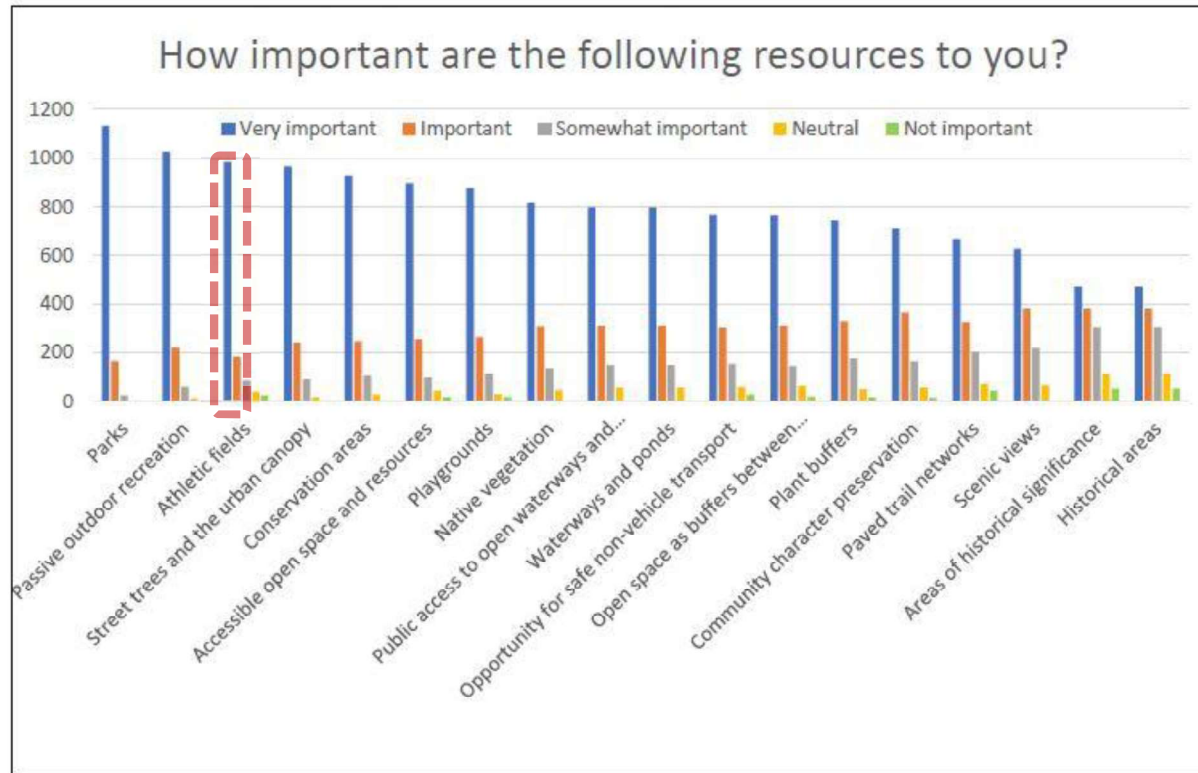
# Community Survey (Open Space + Recreation Plan)

Figure 42. Community Survey: Open Space Resources in Greatest Demand




## Community Survey (Open Space + Recreation Plan)

**Figure 43. Community Survey: Open Space Resources in Greatest Demand**



## Field + Park Improvement Goals

- IMPROVE QUALITY AND QUANTITY OF USABLE MULTIUSE/MULTIPURPOSE FIELDS
- IMPROVE ACCESSIBILITY IN PARK AND FIELD AMENITIES
- ESTABLISH STANDARDIZED PARK CONSTRUCTION DETAILS TO BETTER MANAGE OPERATION & MAINTENANCE POST CONSTRUCTION
- INVEST EQUITABLY IN NEWTON'S ATHLETIC FIELDS + PARKS ACROSS THE CITY



**How did we prioritize field improvements?**

## Prioritization Criteria

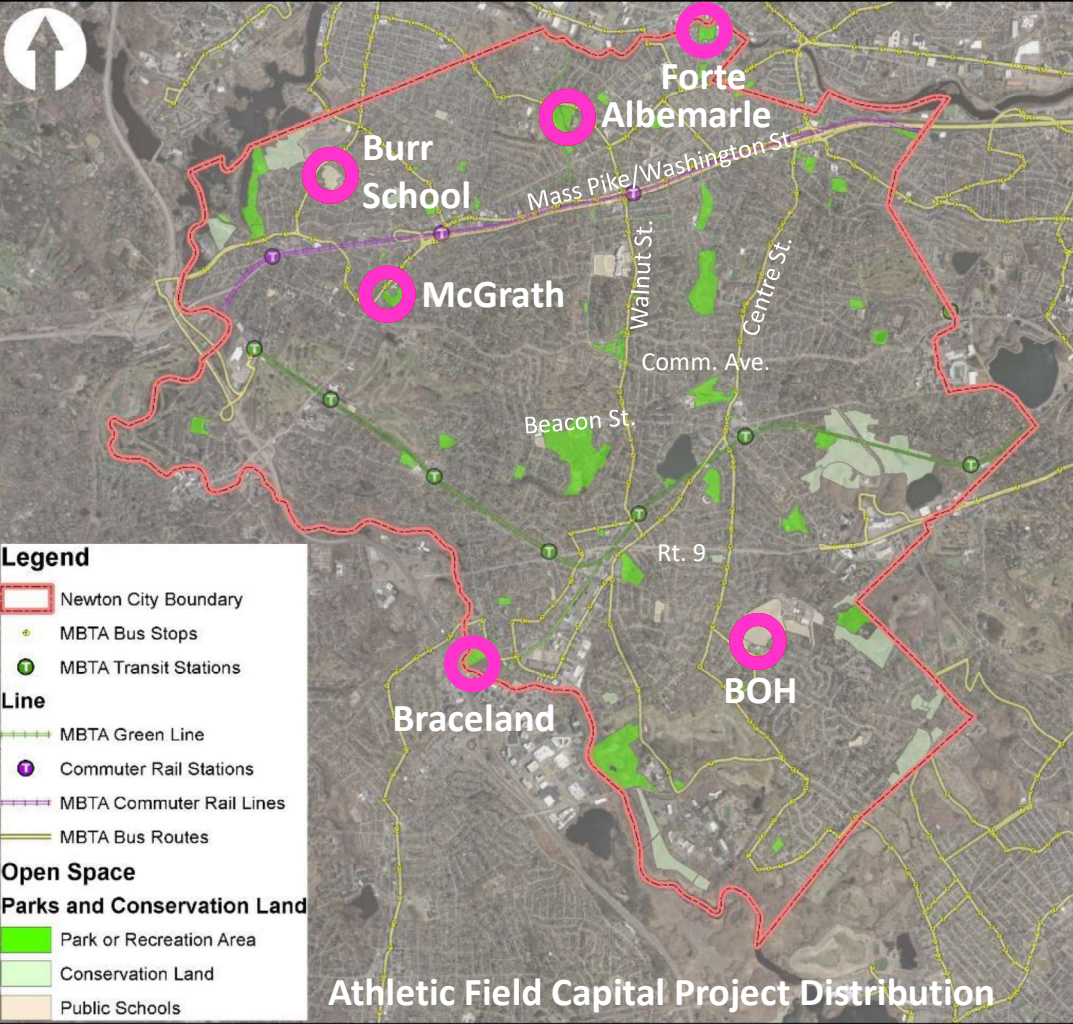
- OPEN SPACE & RECREATION PLAN
- CITY OF NEWTON CAPITAL IMPROVEMENT PLAN (CIP)
- POTENTIAL FOR GREATEST CITY-WIDE BENEFIT
- PROJECT SEQUENCING: PRIORITIZE NEW FIELDS BEING BROUGHT ONLINE FIRST
- POTENTIAL FOR EXPANSION OF MULTIUSE FIELDS
- EXPANDING EVENING PLAY (LIGHT IMPROVEMENTS/ ADDITIONS)
- PLAYER SAFETY
- INTEGRATED WITH OTHER PROJECTS IN A PARK AREA (E.G., PATH AT MCGRATH, GATH POOL PROJECT)



**How do we arrive at a viable project design?**







**Phase 1 Capital Project Distribution:**

- Albemarle Park/ Russ Halloran Sports and Recreation Complex
- Forte Park
- Burr School
- Brown/Oak Hill Fields
- McGrath Park
- Bobby Braceland

TOTAL: 6 Sites

Newton Parks, Recreation and Culture Department  
**Athletic Fields Capital Improvement Plan**

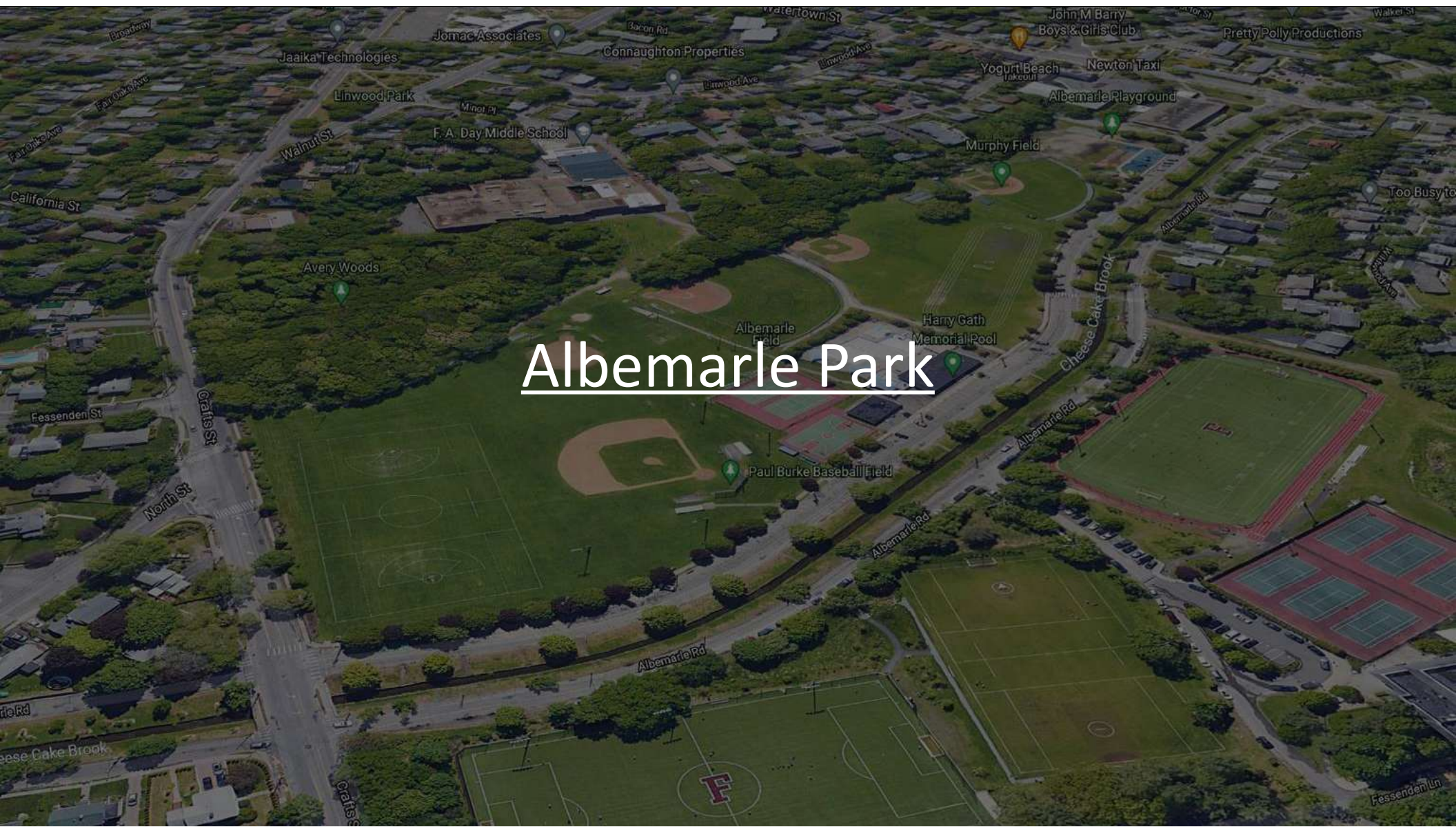
## Additional Athletic Field Projects in the works:

- NNHS Tiger Stadium: High efficiency, low spillage Sports Lighting project (FY 23)
- NSHS Winkler Stadium & Brandeis Rd. Field: Artificial turf carpet replacement (FY 23)
- NSHS Brandeis Road Field: High efficiency, low spillage Sports Lighting project (FY 23)
- NNHS: Tiger Stadium: Artificial turf carpet replacement (FY 25)
- Forte Park: Developer-funded sports relighting (TBD)
- Increased Maintenance: additional seeding, fertilizing, and aeration, etc.

CITY OF NEWTON ATHLETIC FIELDS MAINTENANCE BUDGET  
IMPROVEMENTS

- **Increase athletic field maintenance capabilities**
- **Increase scope of contractual maintenance work**
- **Significantly increase turf management capabilities**

Public Grounds Maintenance Budget					
Maint. Budget Expense Item	General Description	Fiscal Year 2021	Fiscal Year 2022	Budget Increase in Dollars	Budget Increase Percentage
Turf Mowing	Mowing	\$ 575,000	\$ 700,000	\$ 125,000	22%
	Leaf removal				
	Mulching				
	Pruning				
Turf Management	Aerification	\$ 75,000	\$ 250,000	\$ 175,000	233%
	Fertilization				
	Slice seeding				
	Top dressing				
	Integrated Pest Management (IPM)				



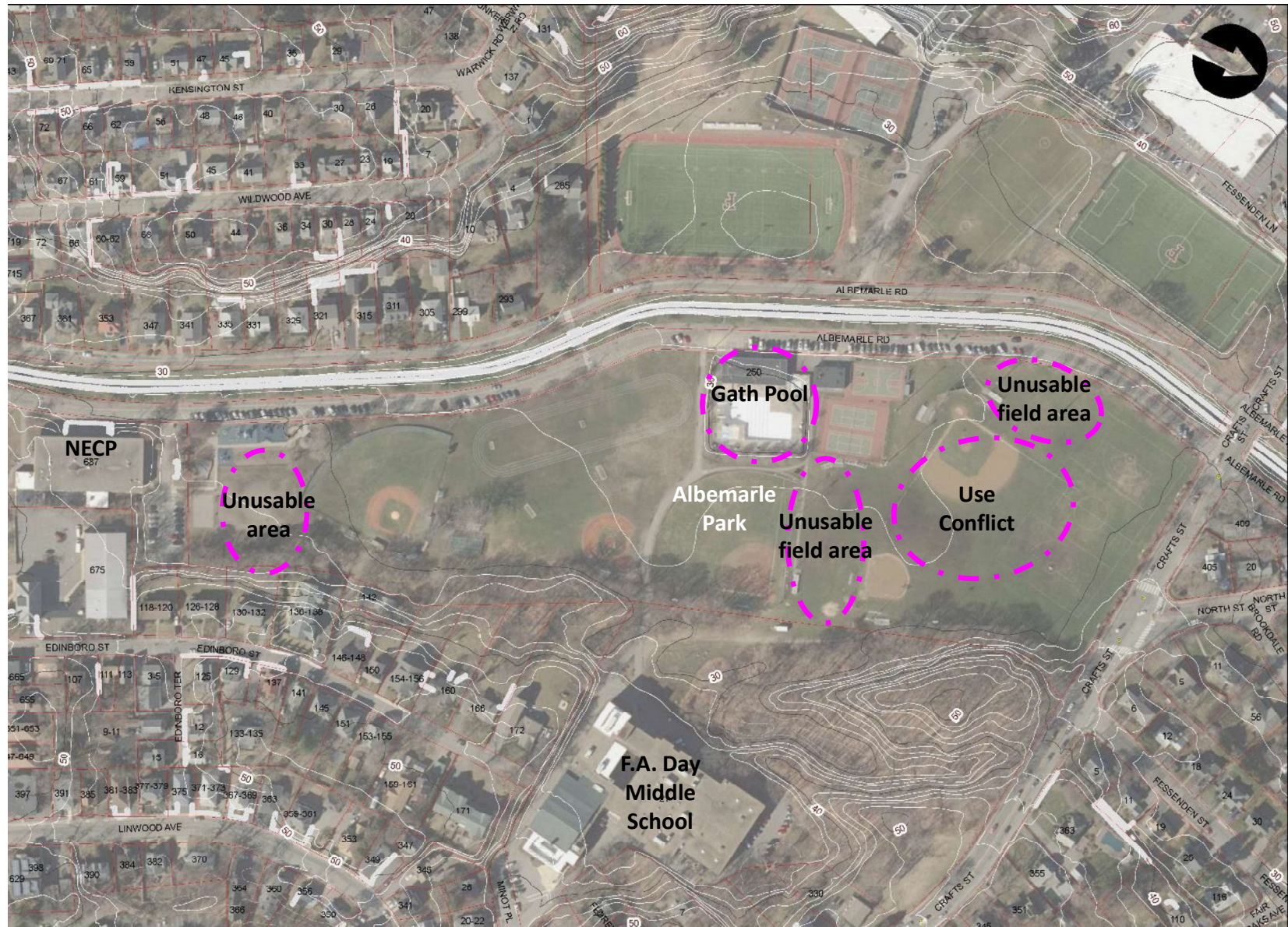
# Albemarle Park

**Russ Halloran Sports & Recreation Complex at Albemarle**  
**24.9 ACRES**

**Ward: 2**  
**Village: Newtonville/**  
**West Newton**

**Existing Amenities**

- playgrounds
- gazebo
- Gath pool
- community garden
- 2 little league fields
- 1 baseball field
- 1 t-ball field
- 2 softball fields
- 2 multipurpose fields
- middle school track
- 2 intermediate soccer fields
- basketball
- tennis
- field house
- irrigated
- lighted
- walking paths, Avery woods
- 4th of July Fireworks
- Snack shack/ticket booth
- 180 parking Spaces (10 ADA)



## Albemarle Park Fields Key Athletic and Facility Stake Holder Data

Facility Name	Non-permitted stake holders	Key Permitted Stake Holders					
		Spring Users (April-June)	Total Spring Permitted Hours	Summer Users (July-August)	Total Summer Permitted Hours	Fall Users (Sept. - November)	Total Fall Permitted Hours
Albemarle Park 'Russell J. Halloran Sports and Recreation Complex'	F.A. Day Middle School students, playground users, passive users, tennis players, basketball players, general park users, pool users, safe route to school	<b>Newton Little League; Newton LL Seniors;</b> Senior Youth Baseball; <b>Newton Girls Softball;</b> Newton Youth Soccer; Newton Girls Soccer; BUDA Youth Frisbee; F.A. Day Middle School Athletics; Prime Baseball League; Babe Ruth Baseball Tryouts; Adult Cricket; Extra Innings Baseball Clinic	<b>2905 hours</b>	Newton Little League; <b>Babe Ruth Baseball;</b> Adult Cricket; <b>Newton Girls Softball;</b> Newton Community Ed - baseball; <b>Boys and Girls Club;</b> Extra Innings Baseball Clinic; Mustang Youth Football; American Legion Baseball; Prime Baseball; BUDA Youth Frisbee; Juventas Youth Soccer	<b>1588 hours</b>	Newton Little League; <b>Newton LL Seniors;</b> Adult Cricket; Newton Girls Softball; Mustang Youth Football; F.A. Day Middle School Athletics; <b>Newton Youth Soccer; Newton Girls Soccer;</b> Extra Innings Baseball Clinic; Lasell Baseball; NNHS Baseball captain's practice; BUDA Youth Frisbee; BUDA Adult Frisbee	<b>2115.50 hours</b>

Athletic Stake Holder Groups highlighted in Bold hold the most field permit hours per recent data

## **Russ Halloran Sports & Recreation Complex at Albemarle**

### **Improvement Ideas/Goals**

- Developed multi-phased, multi-year improvement plans
- Some reconfigured amenities to increase multi purpose athletic field space
- Improved accessibility
- Replaced existing sports lighting at end-of-life
- Assessed park program and use needs, including:
  - Gath Pool footprint
  - school uses
  - cultural events
- Improved safe routes to schools
- Improved shade and tree canopy coverage where possible
- Improved athletic field amenities i.e dugouts, batting cages, scoreboards (with some private funding)
- Assessed feasibility of artificial turf

**Approximate Construction Budget for PHASE 1: 3.2M**





## Completed Steps

- Attained Community Preservation Act funding for design/engineering work
- Prepared Request for Qualifications and advertised bid for designer

## Next Steps

- Designer Selection Committee chooses design firm
- Coordinate with Pool Project Leadership Team
- Preliminary field design/ layout developed based on community input
- Share field project concepts with the public

A wide-angle photograph of a large, green athletic field under a dark, overcast sky. In the foreground on the left, a soccer goal is visible. The field is surrounded by trees and a few buildings in the distance. The overall mood is somber due to the grey sky.

# Questions and Discussion

For additional questions and input please contact: [athleticfields@newtonma.gov](mailto:athleticfields@newtonma.gov)

*Newton Highlands Playground, Newton*

# CONCEPT A

## Existing to Remain -

- Murphy (Little League) - refreshed
- Cole (softball) - refreshed
- Multipurpose field and track
- Basketball court
- Concessions and batting cages at Murphy
- Southern end playgrounds
- Two oaks north of Murphy

## Relocated -

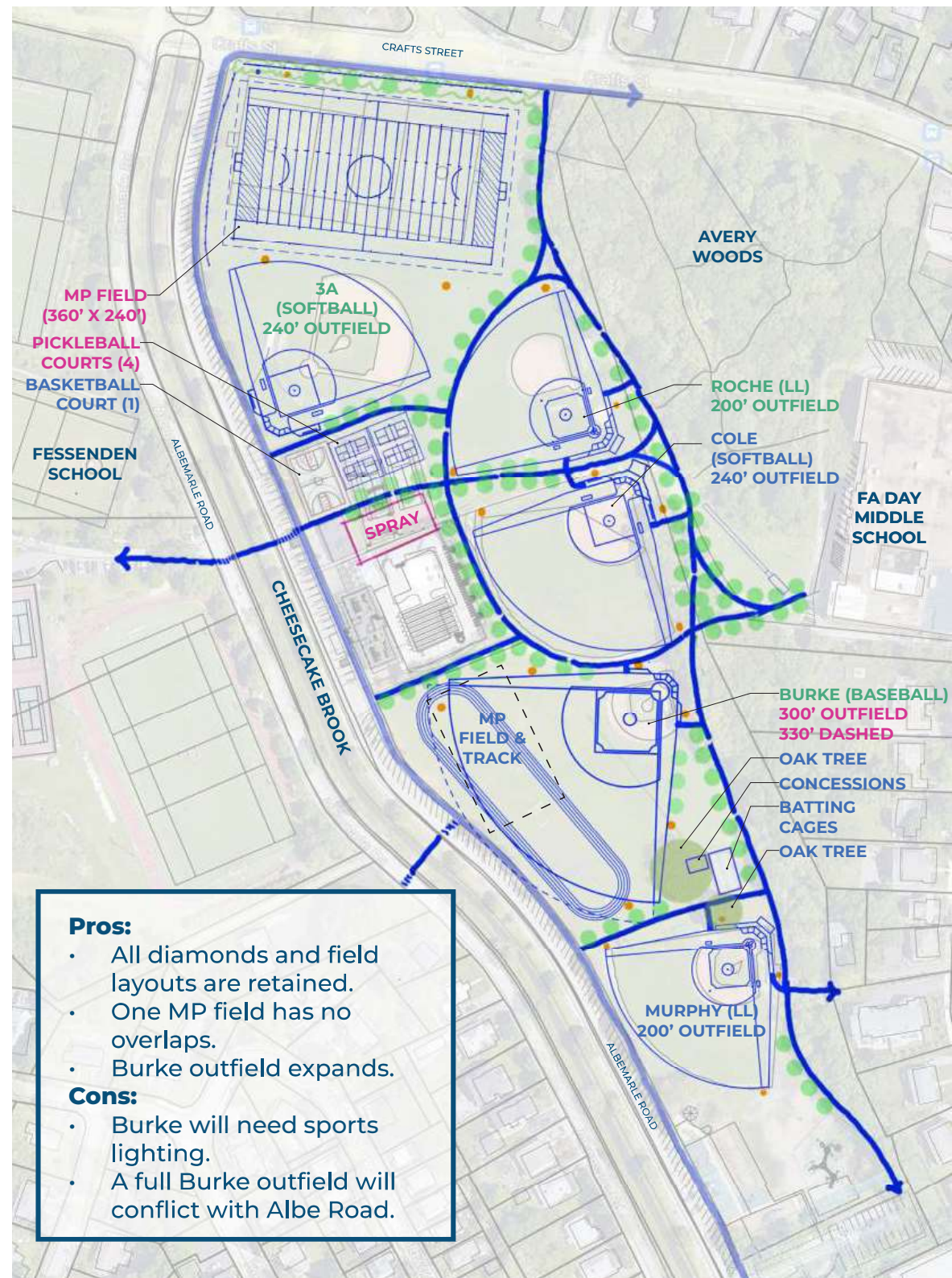
- Burke (baseball) shifted to Roche's current spot; outfield expanded
- Roche (Little League) to 3A's current spot
- 3A (softball) to Burke's current spot

## New -

- New MP field with football striping (E/W)
- Four new pickleball courts
- Spray deck footprint
- Improved pathway circulation and accessible connections to batting cages, spectator seating, etc.
- Multiuse bike trail along eastern edge
- Bridge connection over Cheese Cake Brook to Fessenden (future project)
- New sports lighting (orange dots)
- New irrigation

## Removed -

- Two tennis courts



### Pros:

- All diamonds and field layouts are retained.
- One MP field has no overlaps.
- Burke outfield expands.

### Cons:

- Burke will need sports lighting.
- A full Burke outfield will conflict with Albe Road.

# CONCEPT A.1

## Existing to Remain -

- Murphy (Little League) - refreshed
- Cole (softball) - refreshed
- Multipurpose field and track
- Basketball court
- Concessions and batting cages at Murphy
- Southern end playgrounds
- Two oaks north of Murphy

## Relocated -

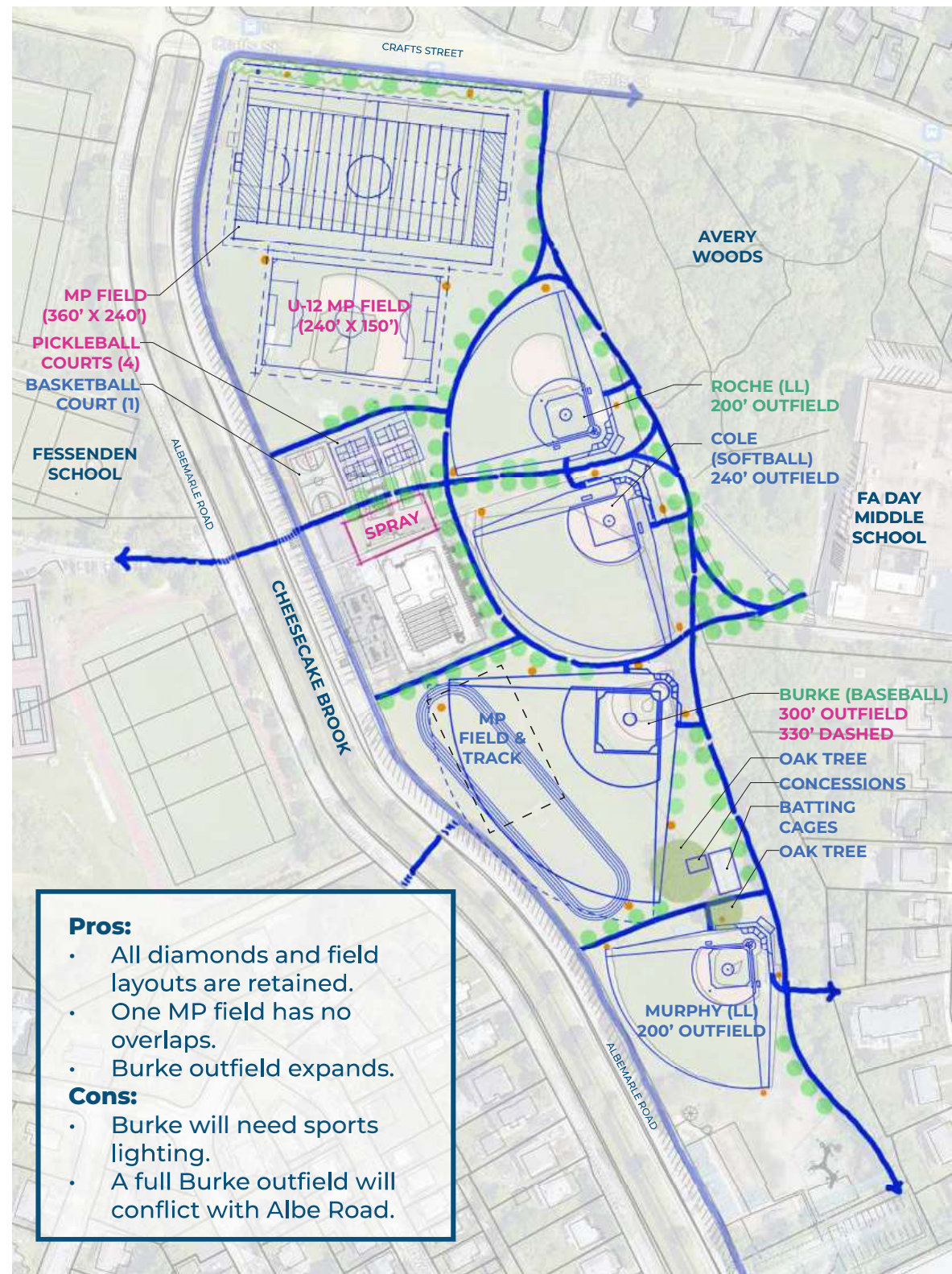
- Burke (baseball) shifted to Roche's current spot; outfield expanded
- Roche (Little League) to 3A's current spot

## New -

- New MP field with football striping (E/W)
- **New U-12 MP field**
- Four new pickleball courts
- Spray deck footprint
- Improved pathway circulation and accessible connections to batting cages, spectator seating, etc.
- Multiuse bike trail along eastern edge
- Bridge connection over Cheese Cake Brook to Fessenden (future project)
- New sports lighting (orange dots)
- New irrigation

## Removed -

- 3A field (softball)
- Two tennis courts



### Pros:

- All diamonds and field layouts are retained.
- One MP field has no overlaps.
- Burke outfield expands.

### Cons:

- Burke will need sports lighting.
- A full Burke outfield will conflict with Albe Road.



# CONCEPT B

## Existing to Remain -

- Murphy (Little League) - refreshed
- Multipurpose (MP) field and track
- Basketball court
- Concessions and batting cages at Murphy
- Southern end playgrounds
- Two oaks north of Murphy

## Relocated -

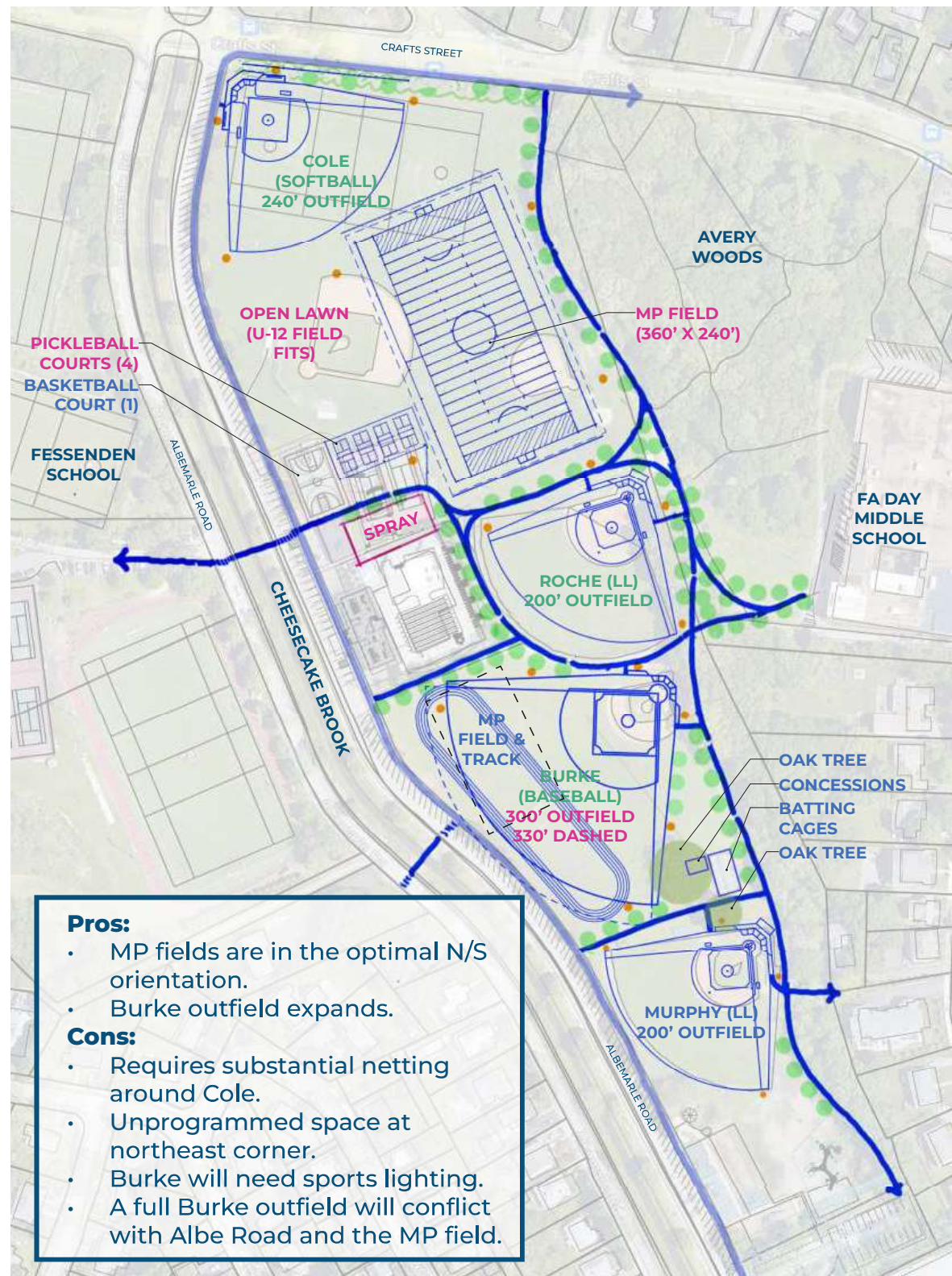
- Burke (baseball) shifted to Roche's current spot; outfield expanded
- Roche (Little League) to Cole's current spot
- Cole (softball) relocated to MP field's current spot (NW corner)

## New -

- New MP field with football striping (N/S)
- Open lawn that fits a U-12 size field (240' x 150')
- Four new pickleball courts
- Spray deck footprint
- Improved pathway circulation and accessible connections to batting cages, spectator seating, etc.
- Multiuse bike trail along eastern edge
- Bridge connection over Cheese Cake Brook to Fessenden (future project)
- New sports lighting (orange dots)
- New irrigation

## Removed -

- 3A (softball)
- Two tennis courts



### Pros:

- MP fields are in the optimal N/S orientation.
- Burke outfield expands.

### Cons:

- Requires substantial netting around Cole.
- Unprogrammed space at northeast corner.
- Burke will need sports lighting.
- A full Burke outfield will conflict with Albe Road and the MP field.

# CONCEPT C

## Existing to Remain -

- Murphy (Little League) - refreshed
- Roche (Little League) - refreshed
- Cole (softball) - refreshed
- Multipurpose (MP) field and track
- Concessions and batting cages at Murphy
- Southern end playgrounds
- Two oaks north of Murphy

## Relocated -

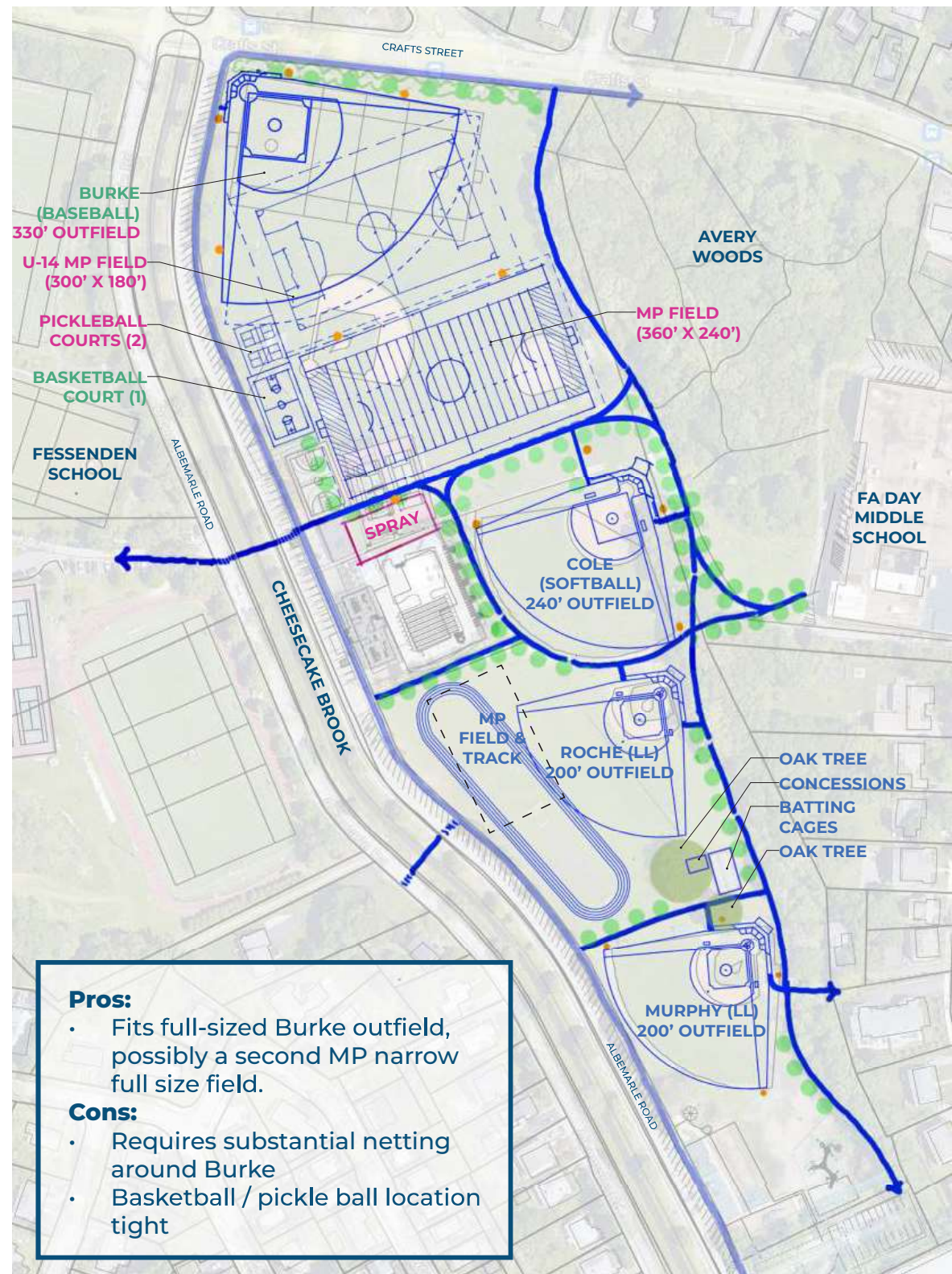
- Burke (baseball) reoriented; outfield expanded
- Basketball court

## New -

- New MP field with football striping (E/W)
- New MP field overlay (E/W)
- Two new pickleball courts
- Spray deck footprint
- Improved pathway circulation and accessible connections to batting cages, spectator seating, etc.
- Multiuse bike trail along eastern edge
- Bridge connection over Cheese Cake Brook to Fessenden (future project)
- New sports lighting (orange dots)
- New irrigation

## Removed -

- 3A field (softball)
- Two tennis courts



### Pros:

- Fits full-sized Burke outfield, possibly a second MP narrow full size field.

### Cons:

- Requires substantial netting around Burke
- Basketball / pickle ball location tight



# CONCEPT D

## Existing to Remain -

- Murphy (Little League) - refreshed
- Roche (Little League) - refreshed
- Cole (softball) - refreshed
- 3A (softball) - refreshed
- Multipurpose (MP) field and track
- Concessions and batting cages at Murphy
- Southern end playgrounds
- Two oaks north of Murphy

## Relocated -

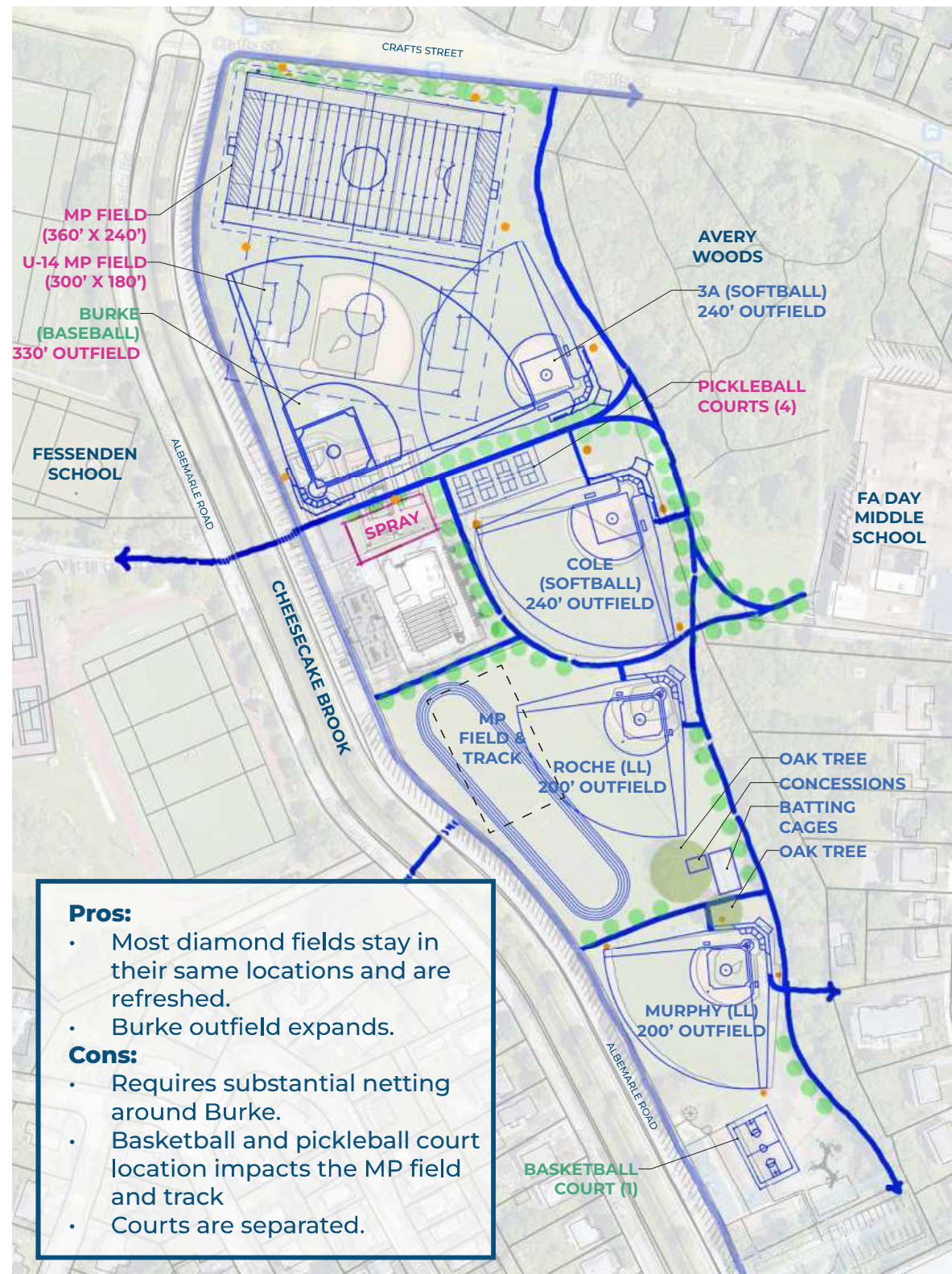
- Burke (baseball) reoriented; outfield expanded
- Basketball court

## New -

- New MP field with football striping (E/W)
- New MP field overlay (E/W)
- Two new pickleball courts
- Spray deck footprint
- Improved pathway circulation and accessible connections to batting cages, spectator seating, etc.
- Multiuse bike trail along eastern edge
- Bridge connection over Cheese Cake Brook to Fessenden (future project)
- New sports lighting (orange dots)
- New irrigation

## Removed -

- Two tennis courts



### Pros:

- Most diamond fields stay in their same locations and are refreshed.
- Burke outfield expands.

### Cons:

- Requires substantial netting around Burke.
- Basketball and pickleball court location impacts the MP field and track
- Courts are separated.





# CONCEPT E

## Existing to Remain -

- Murphy (Little League) - refreshed
- Cole (softball) - refreshed
- Roche (Little League) - refreshed
- Multipurpose (MP) field and track
- Concessions and batting cages at Murphy
- Southern end playgrounds
- Two oaks north of Murphy

## Relocated -

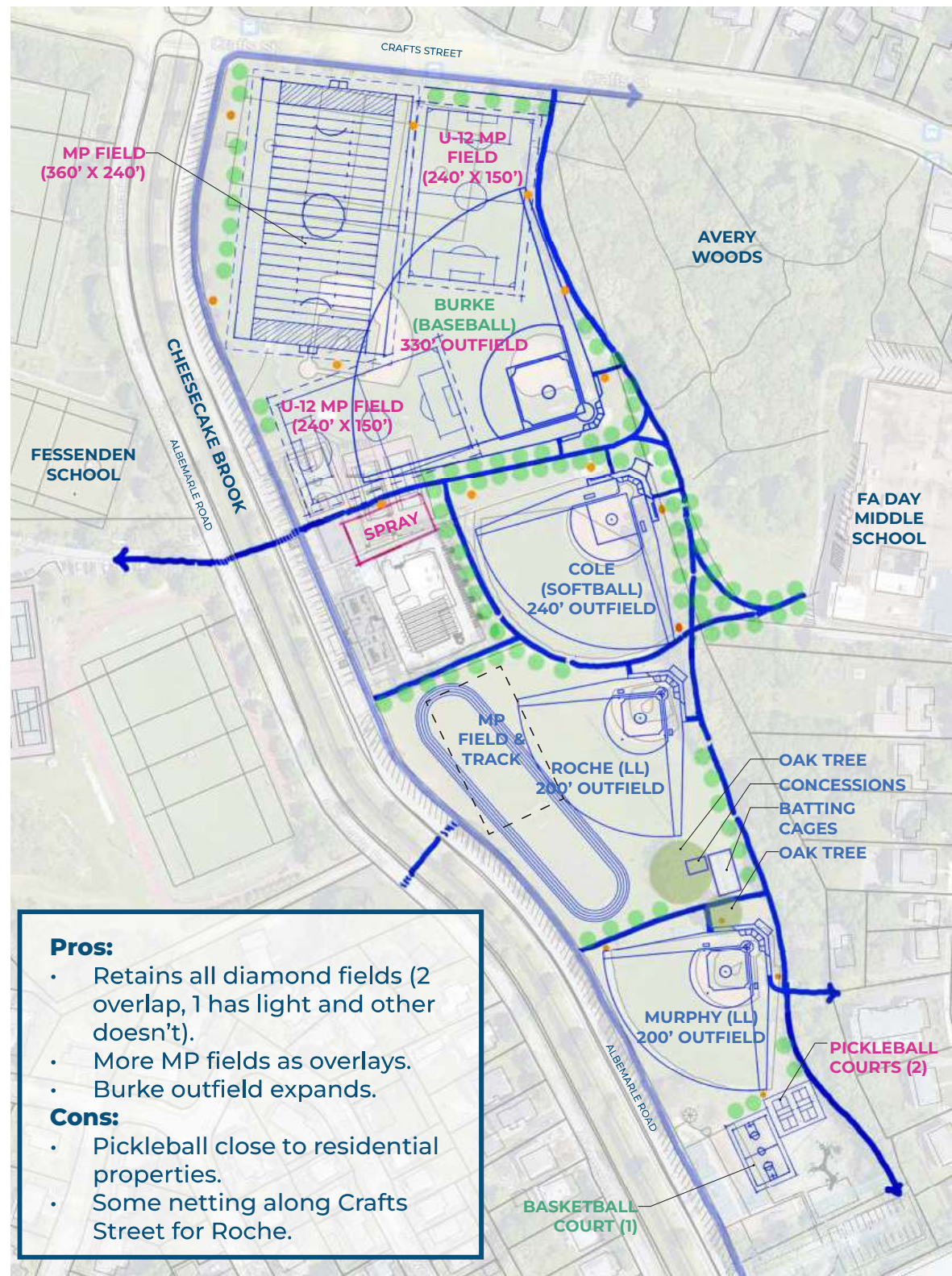
- Burke (baseball) shifted to 3A's current spot; outfield expanded
- Basketball court

## New -

- New MP field with football striping (N/S)
- Two new MP fields (N/S and E/W)
- Two new pickleball courts close to residential properties
- Spray deck footprint
- Improved pathway circulation and accessible connections to batting cages, spectator seating, etc.
- Multiuse bike trail along eastern edge
- Bridge connection over Cheese Cake Brook to Fessenden (future project)
- New sports lighting (orange dots)
- New irrigation

## Removed -

- Two tennis courts
- 3A (softball)



### Pros:

- Retains all diamond fields (2 overlap, 1 has light and other doesn't).
- More MP fields as overlays.
- Burke outfield expands.

### Cons:

- Pickleball close to residential properties.
- Some netting along Crafts Street for Roche.

# CONCEPT A

## Existing to Remain -

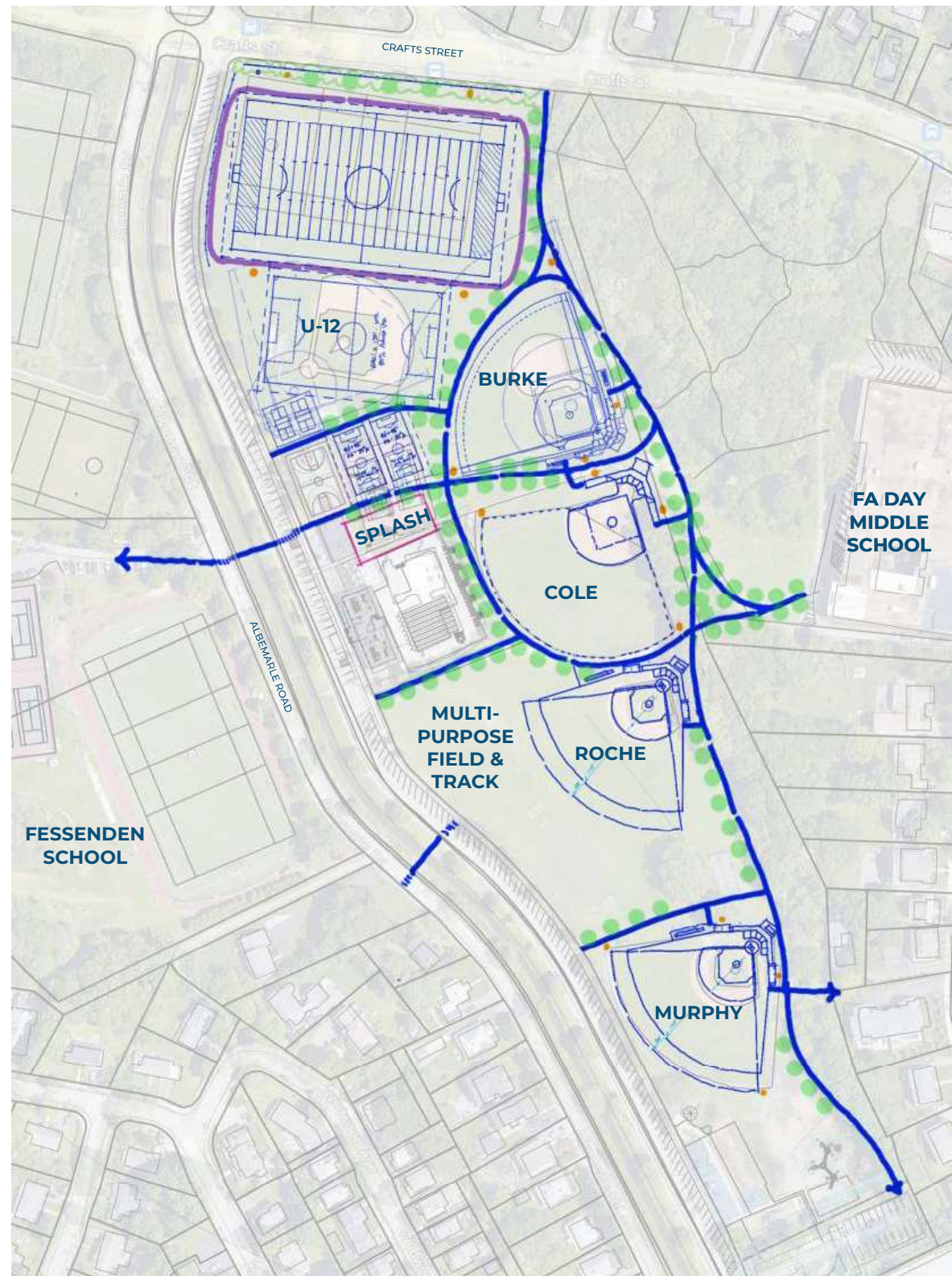
- Murphy (Little League) - refreshed
- Roche (Little League) - refreshed
- Cole (softball) - refreshed
- Multipurpose field and track
- Basketball court
- Concessions and batting cages at Murphy
- Southern end playgrounds
- Two oaks north of Murphy

## New or Relocated -

- One new multipurpose synthetic turf field with running track (purple) (E/W)
- One new 240' x 150' U-12 (80% adult use) natural turf field (E/W)
- Burke relocated - 200' outfield
- Two 90' x 45' U-6 natural turf fields (25% adult use)
- Two new pickleball courts
- 3A replacement ghosted in under U-12, as a possible alternative
- Splash pad footprint
- Improved pathway circulation and accessible connections to batting cages, spectator seating, etc.
- Multiuse bike trail along eastern edge
- Bridge connection over Cheesecake Brook to Fessenden
- New sports lighting (orange dots)
- New irrigation

## Removed -

- 3A field (softball) - possible relocation at U-12
- Two tennis courts



# CONCEPT B

## Existing to Remain -

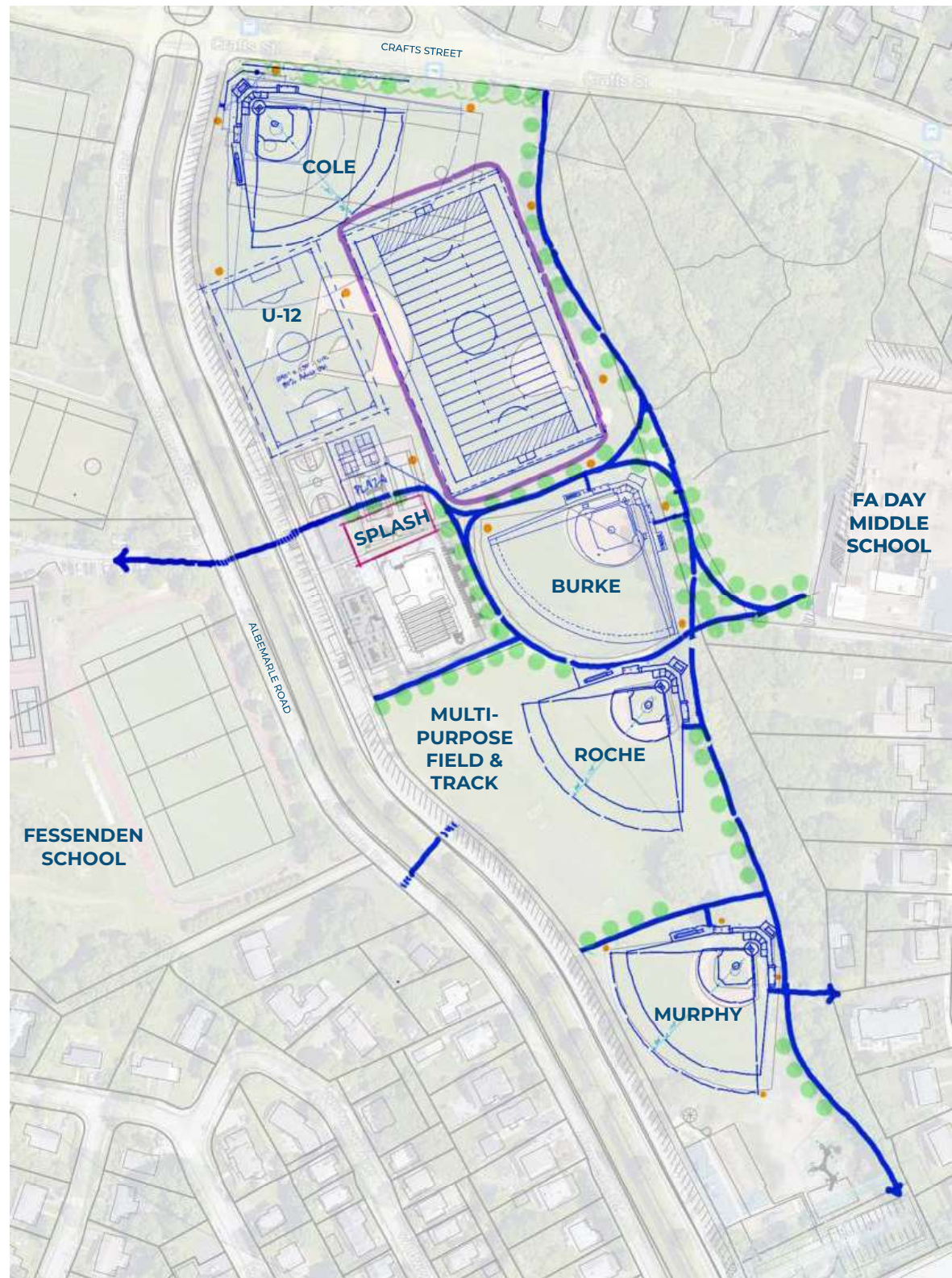
- Murphy (Little League) - refreshed
- Roche (Little League) - refreshed
- Multipurpose field and track
- Concessions and batting cages at Murphy
- Southern end playgrounds
- Two oaks north of Murphy

## New or Relocated -

- One new multipurpose synthetic turf field with running track (purple) (N/S)
- One new 240' x 150' U-12 (80% adult use) natural turf field (N/S)
- Burke relocated - 200' outfield
- Cole relocated - 200' outfield
- Splash pad footprint
- Improved pathway circulation and accessible connections to batting cages, spectator seating, etc.
- Multiuse bike trail along eastern edge
- Bridge connection over Cheesecake Brook to Fessenden
- New sports lighting (orange dots)
- New irrigation

## Removed -

- 3A field (softball)
- Two tennis courts



# CONCEPT C

## Existing to Remain -

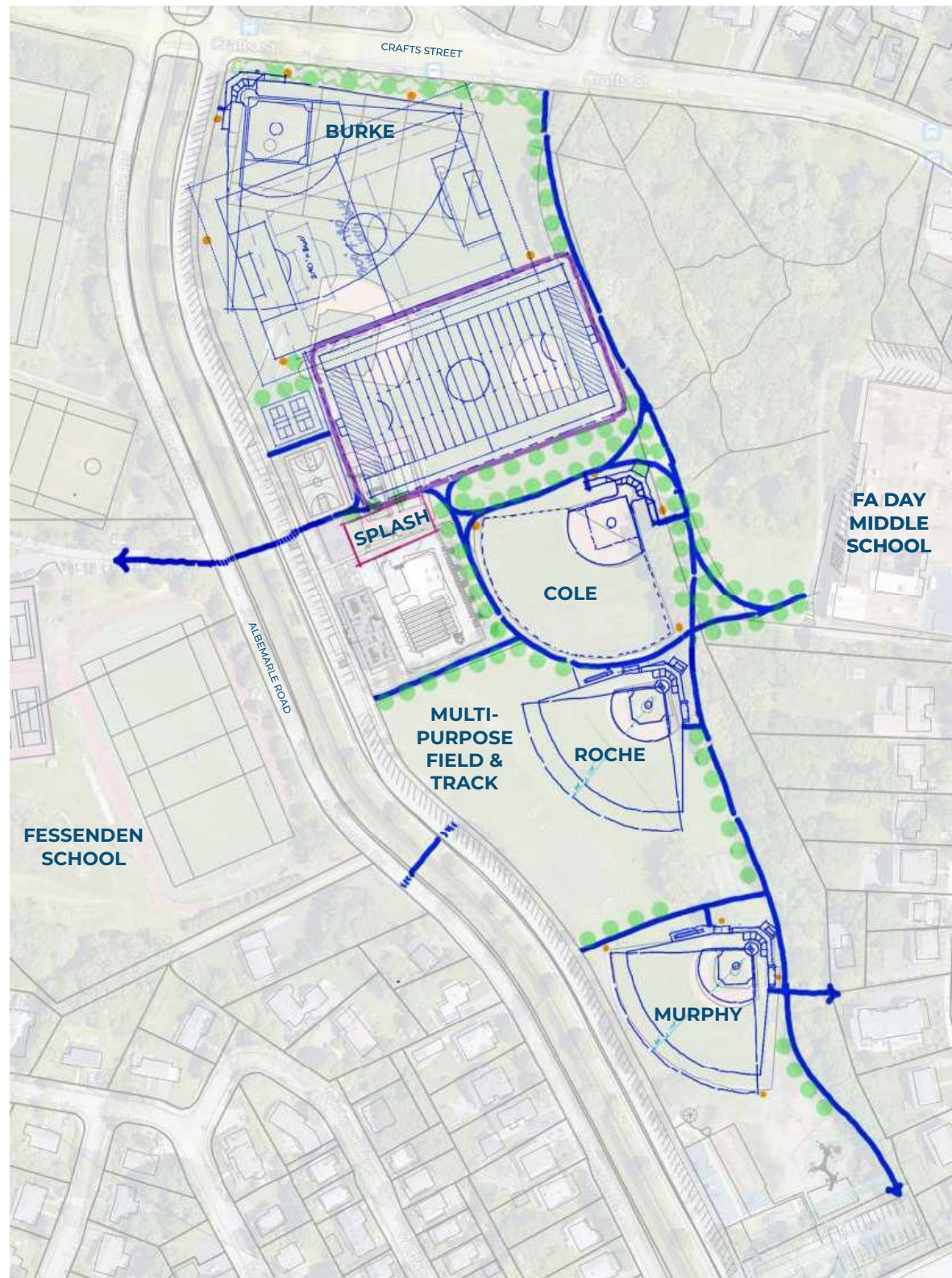
- Murphy (Little League) - refreshed
- Roche (Little League) - refreshed
- Cole (softball) - refreshed
- Multipurpose field and track
- Concessions and batting cages at Murphy
- Southern end playgrounds
- Two oaks north of Murphy

## New or Relocated -

- One new multipurpose synthetic turf field with running track (purple) (E/W)
- One new multipurpose natural turf field (E/W)
- Burke overlay relocated - 300' outfield (conflicts with 360' x 240' soccer field, but works with a U-14 field size)
- Splash pad footprint
- Improved pathway circulation and accessible connections to batting cages, spectator seating, etc.
- Multiuse bike trail along eastern edge
- Bridge connection over Cheesecake Brook to Fessenden
- New sports lighting (orange dots)
- New irrigation

## Removed -

- 3A field (softball)
- Two tennis courts



# CONCEPT D

## Existing to Remain -

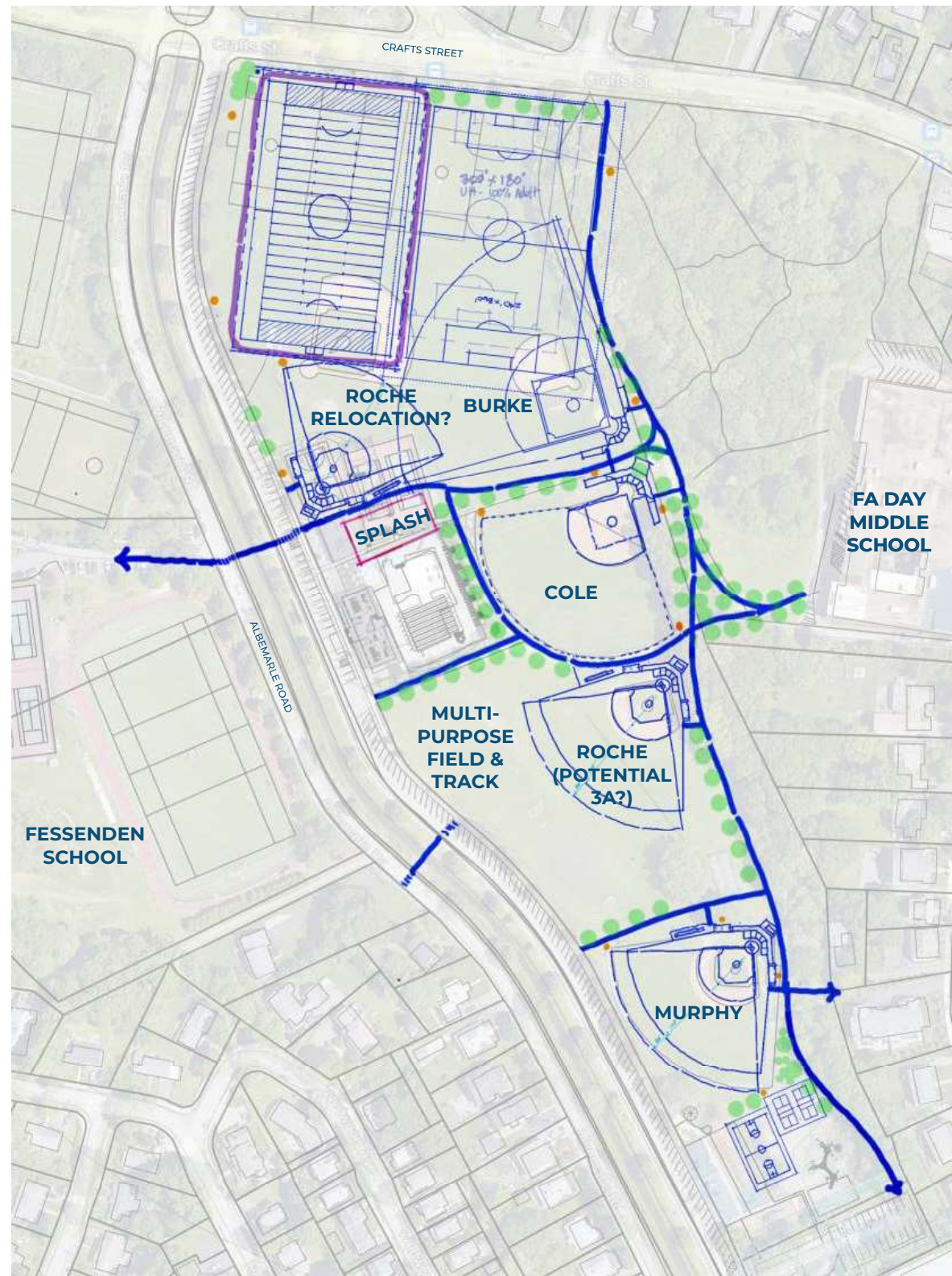
- Murphy (Little League) - refreshed
- Roche (Little League) - refreshed (or relocated?)
- Cole (softball) - refreshed
- Multipurpose field and track
- Concessions and batting cages at Murphy
- Southern end playgrounds
- Two oaks north of Murphy

## New or Relocated -

- One new multipurpose synthetic turf field with running track (purple) (N/S)
- One new multipurpose natural turf field (N/S) - Avery Woods slope impacts
- Burke overlay relocated - 300' outfield (conflicts with 360' x 240' soccer field but works with a U-14 field size)
- New Little League field - 175' outfield
- Relocated basketball court
- Two new pickleball courts
- Splash pad footprint
- Improved pathway circulation and accessible connections to batting cages, spectator seating, etc.
- Multiuse bike trail along eastern edge
- Bridge connection over Cheesecake Brook to Fessenden
- New sports lighting (orange dots)
- New irrigation

## Removed -

- 3A field (softball) - potential relocation to Roche?
- Two tennis courts



# CONCEPT A

## Existing to Remain -

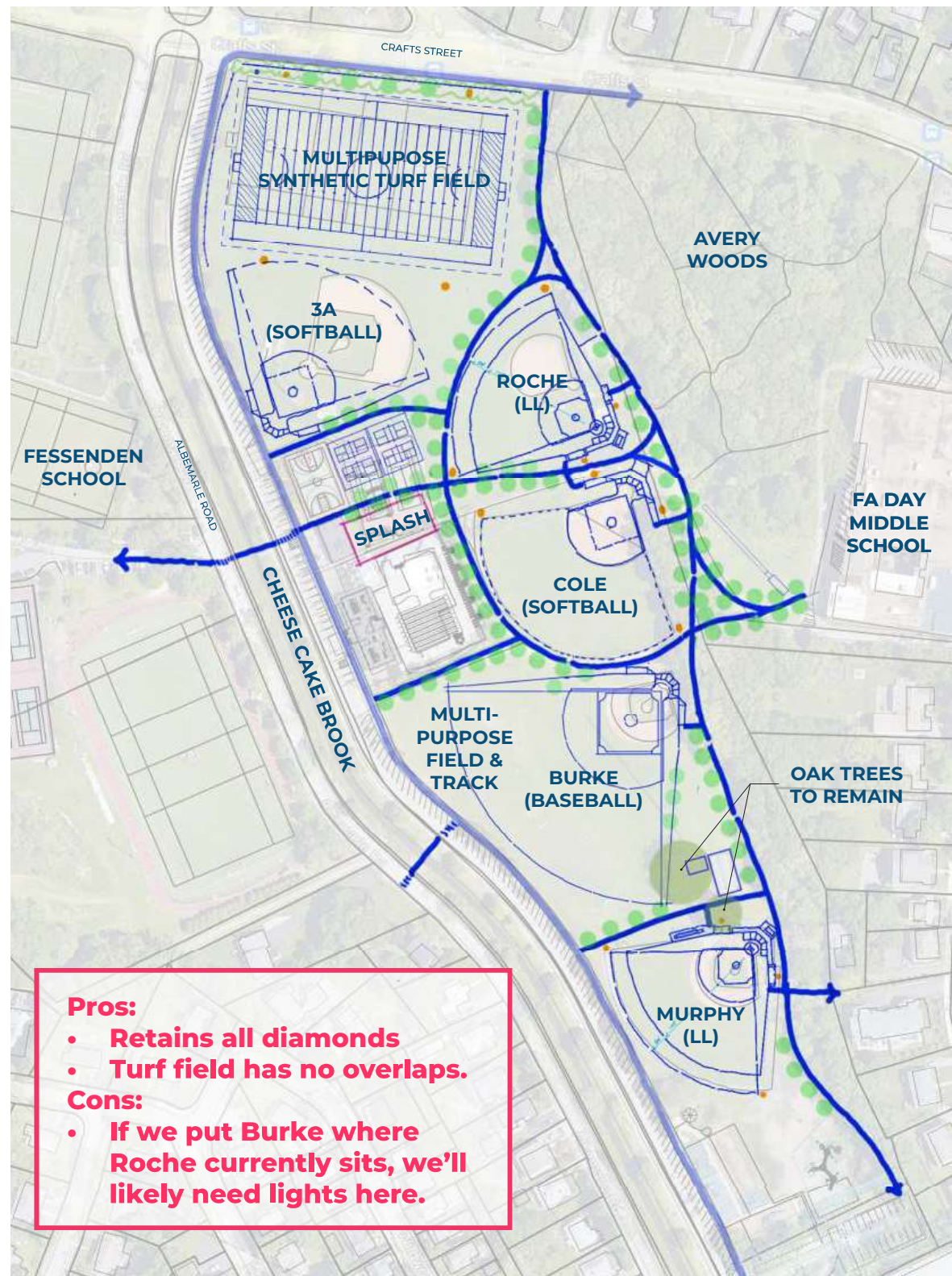
- Murphy (Little League) - refreshed
- Cole (softball) - refreshed
- Multipurpose field and track
- Basketball court
- Concessions and batting cages at Murphy
- Southern end playgrounds
- Two oaks north of Murphy

## New or Relocated -

- One new multipurpose synthetic turf field (E/W)
- Burke (baseball) - relocated (300' outfield)
- Roche (Little League) - relocated (200' outfield)
- 3A (softball) - relocated (200' outfield)
- Four new pickleball courts
- Splash pad footprint
- Improved pathway circulation and accessible connections to batting cages, spectator seating, etc.
- Multiuse bike trail along eastern edge
- Bridge connection over Cheesecake Brook to Fessenden (future project)
- New sports lighting (orange dots)
- New irrigation

## Removed -

- Two tennis courts



### Pros:

- Retains all diamonds
- Turf field has no overlaps.

### Cons:

- If we put Burke where Roche currently sits, we'll likely need lights here.

# CONCEPT B

## Existing to Remain -

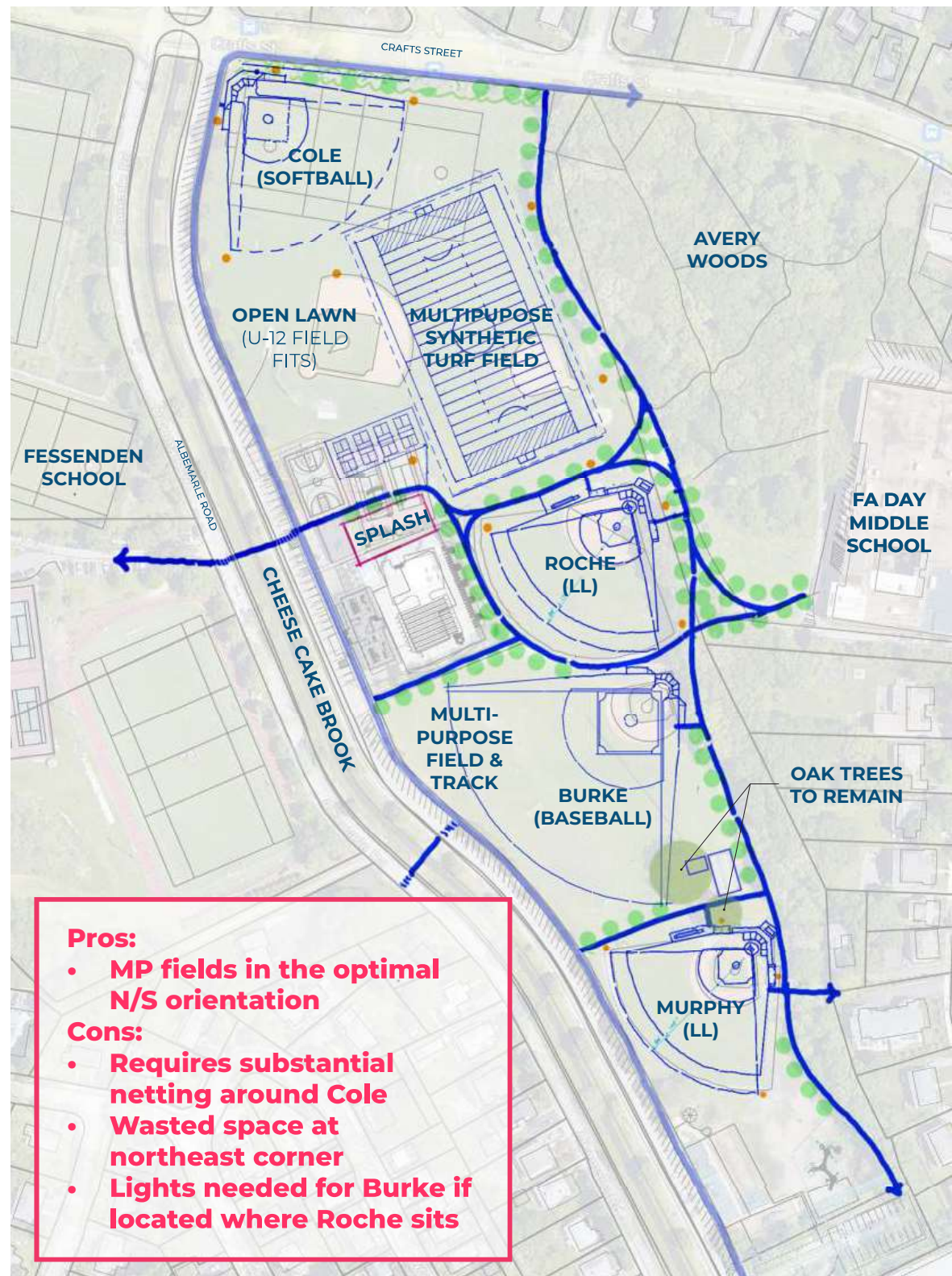
- Murphy (Little League) - refreshed
- Multipurpose (MP) field and track
- Basketball court
- Concessions and batting cages at Murphy
- Southern end playgrounds
- Two oaks north of Murphy

## New or Relocated -

- One new MP synthetic turf field (N/S)
- Burke (baseball) - relocated (300' outfield)
- Roche (Little League) - relocated (200' outfield)
- Cole (softball) - relocated (200' outfield)
- Four new pickleball courts
- Splash pad footprint
- Improved pathway circulation and accessible connections to batting cages, spectator seating, etc.
- Multiuse bike trail along eastern edge
- Bridge connection over Cheesecake Brook to Fessenden (future project)
- New sports lighting (orange dots)
- New irrigation

## Removed -

- 3A (softball)
- Two tennis courts



### Pros:

- **MP fields in the optimal N/S orientation**

### Cons:

- **Requires substantial netting around Cole**
- **Wasted space at northeast corner**
- **Lights needed for Burke if located where Roche sits**

# CONCEPT C

## Existing to Remain -

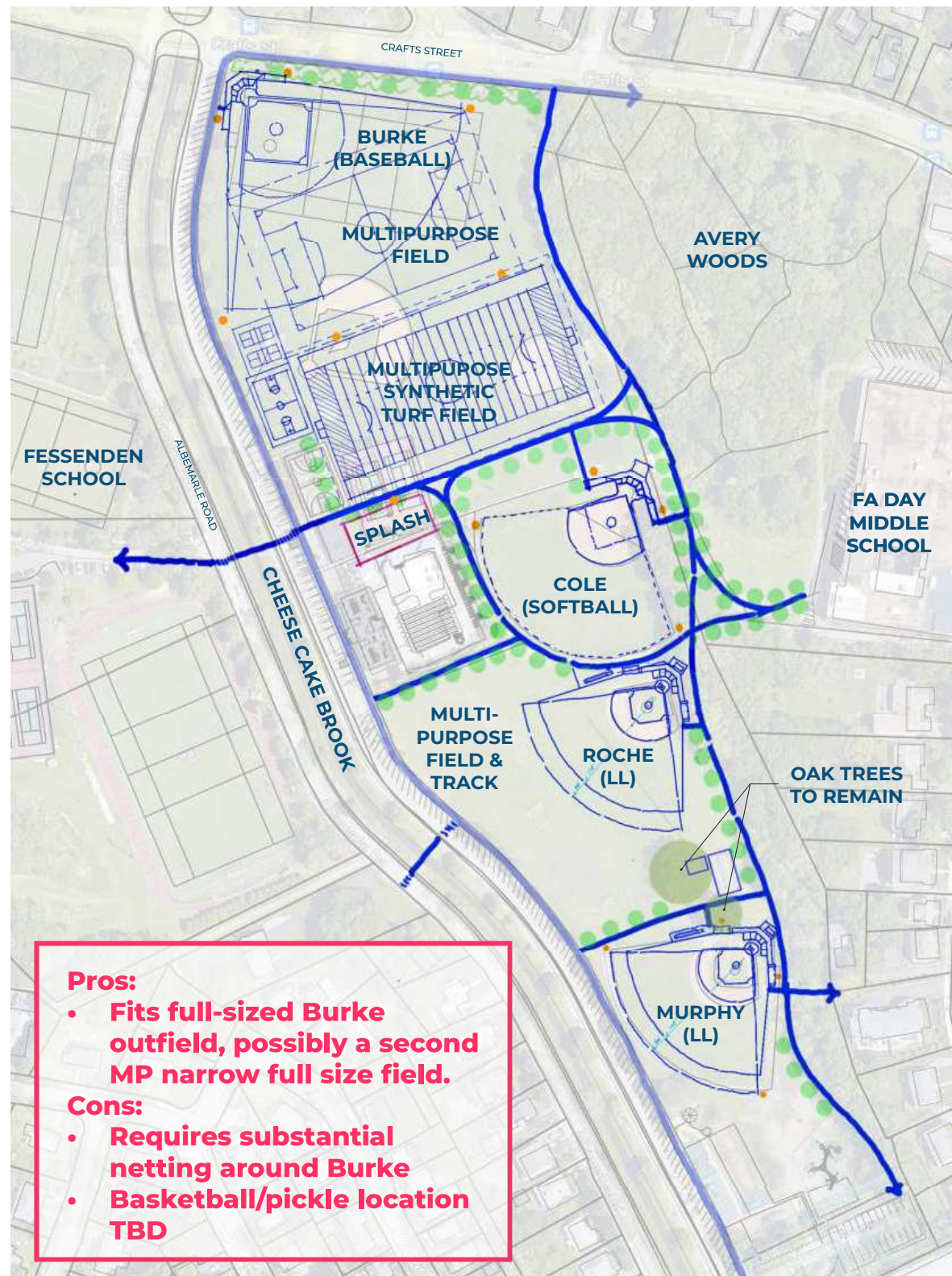
- Murphy (Little League) - refreshed
- Roche (Little League) - refreshed
- Cole (softball) - refreshed
- Multipurpose (MP) field and track
- Concessions and batting cages at Murphy
- Southern end playgrounds
- Two oaks north of Murphy

## New or Relocated -

- New MP synthetic turf field (E/W)
- New MP natural turf field overlay (E/W)
- Burke (baseball) - relocated as an overlay (300' outfield)
- Basketball court - relocated
- Two new pickleball courts
- Splash pad footprint
- Improved pathway circulation and accessible connections to batting cages, spectator seating, etc.
- Multiuse bike trail along eastern edge
- Bridge connection over Cheesecake Brook to Fessenden (future project)
- New sports lighting (orange dots)
- New irrigation

## Removed -

- 3A field (softball)
- Two tennis courts



### Pros:

- Fits full-sized Burke outfield, possibly a second MP narrow full size field.

### Cons:

- Requires substantial netting around Burke
- Basketball/pickle location TBD





# CONCEPT D

## Existing to Remain -

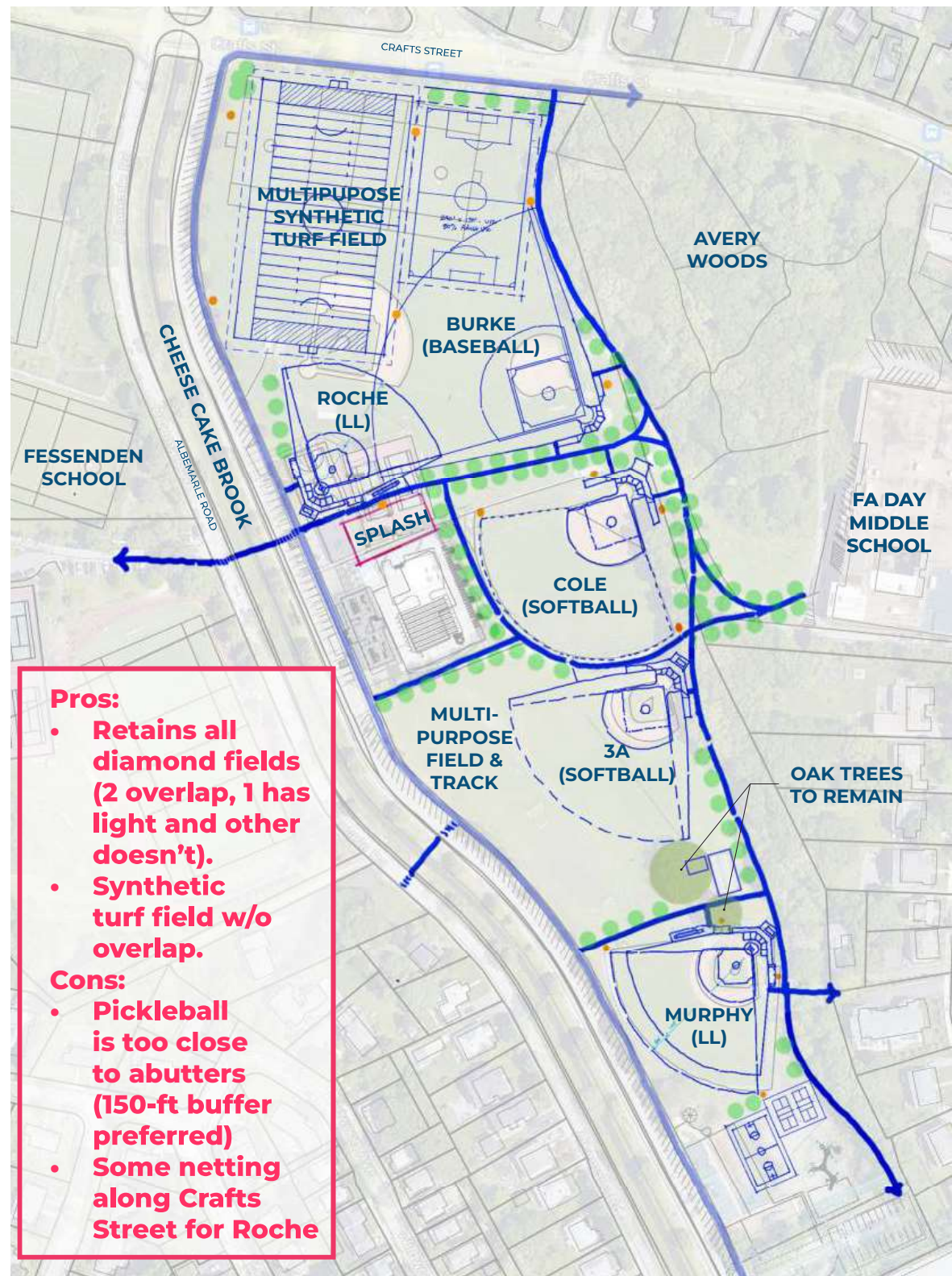
- Murphy (Little League) - refreshed
- Cole (softball) - refreshed
- Multipurpose (MP) field and track
- Concessions and batting cages at Murphy
- Southern end playgrounds
- Two oaks north of Murphy

## New or Relocated -

- New MP synthetic turf field (N/S)
- New MP natural turf field (N/S)
- Burke - relocated as an overlay (300' outfield)
- Roche (Little League) - relocated as an overlay (175' outfield)
- 3A (softball) - relocated (200' outfield)
- Relocated basketball court
- Two new pickleball courts
- Splash pad footprint
- Improved pathway circulation and accessible connections to batting cages, spectator seating, etc.
- Multiuse bike trail along eastern edge
- Bridge connection over Cheesecake Brook to Fessenden (future project)
- New sports lighting (orange dots)
- New irrigation

## Removed -

- Two tennis courts



### Pros:

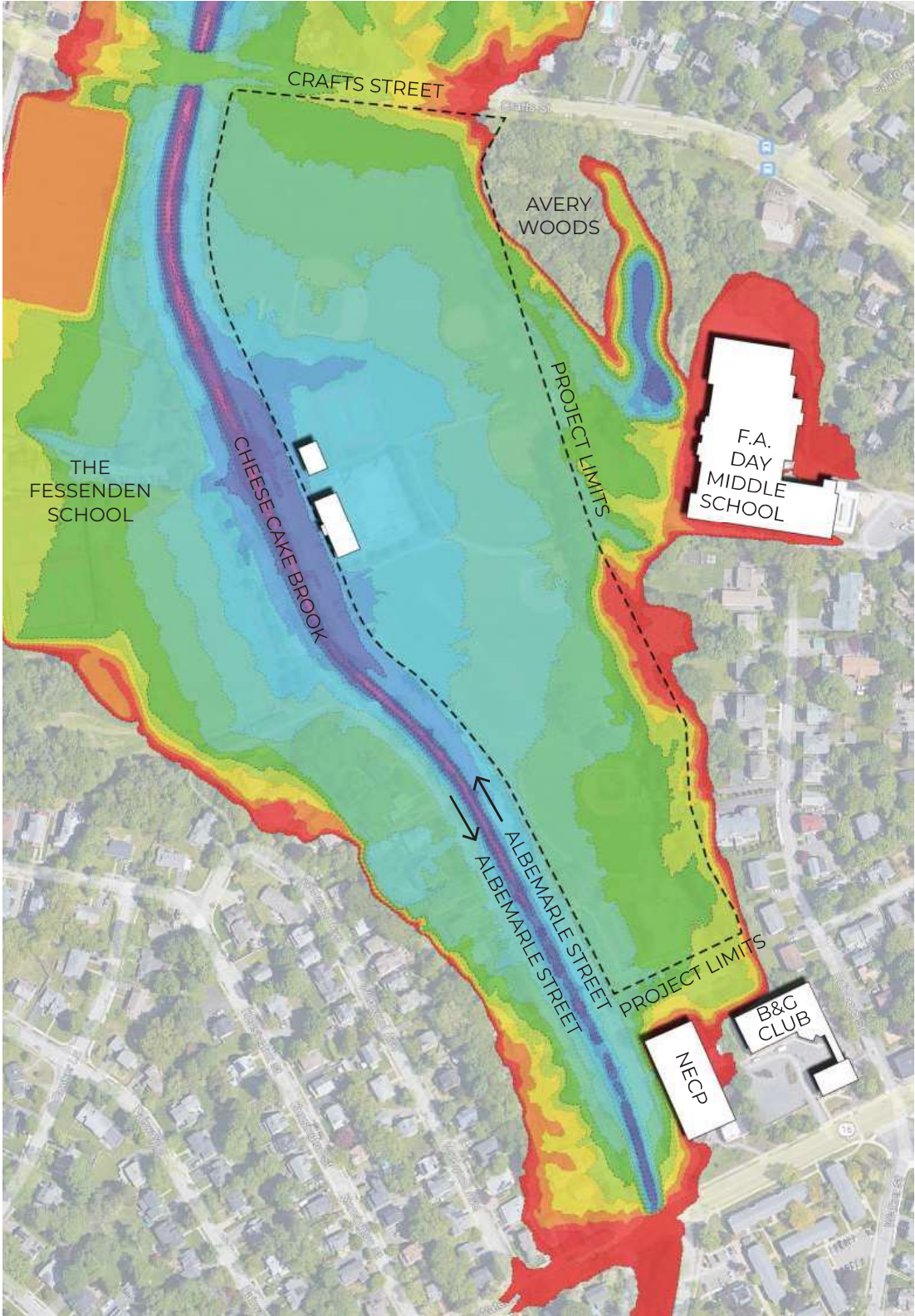
- Retains all diamond fields (2 overlap, 1 has light and other doesn't).
- Synthetic turf field w/o overlap.

### Cons:

- Pickleball is too close to abutters (150-ft buffer preferred)
- Some netting along Crafts Street for Roche



# EXISTING TOPOGRAPHY



# EXISTING BIRD'S EYE LOOKING SOUTHEAST

Key  
Plan



# BIRD'S EYE VIEW LOOKING NORTHWEST

Key  
Plan



# BIRD'S EYE LOOKING NORTH

Key  
Plan

