



## FORGE

### 12074BK

#### MEDIUM WALL MOUNT LANTERN

Inspired by a lighting industry staple barn light, Forge features a practical outdoor lighting solution to withstand the elements. Whether it is enduring harsh sunrays, extreme cold or continuous salt air, Forge is built to last with an industrial chic flair. Forge is available in a Black and Antique Brushed Aluminum finish resistant to rust and corrosion with a 5-year warranty.

DETAILS	
FINISH:	Black
MATERIAL:	Composite

DIMENSIONS	
WIDTH:	16"
HEIGHT:	17.5"
WEIGHT:	4.5lb
BACK PLATE:	6" Dia.
EXTENSION:	32.5"
TOP TO OUTLET:	8.5"

LIGHT SOURCE	
LIGHT SOURCE:	Socket
WATTAGE:	1-100w Med.
VOLTAGE:	120v

SHIPPING	
CARTON LENGTH:	23.8
CARTON WIDTH:	11
CARTON HEIGHT:	16.5
CARTON WEIGHT:	7.5

#### PRODUCT DETAILS:

- Suitable for use in wet (outdoor direct rain or sprinkler) locations as defined by NEC and CEC. Meets United States UL Underwriters Laboratories & CSA Canadian Standards Association Product Safety Standards
- Fixture is Dark Sky compliant and engineered to minimize light glare upward into the night sky
- 5 year finish warranty
- The Coastal Elements Collection offers versatile designs, constructed of composite materials and coated with anti-fading finishes, for maximum durability in harsh climates.
- Angular lines, a bold finish and robust details create an industrial edge to add flair to any type of façade
- Striking black finish enhances design

COASTAL  
ELEMENTS™  
collection



## REPUBLIC

### 1000BK

#### SMALL WALL MOUNT LANTERN

Republic's striking double frame design, constructed from a composite material and treated with an anti-fading agent for maximum durability, is at home on the coast or a country lodge. The Oil Rubbed Bronze, Satin Nickel and Black resilience finishes feature a 5-year warranty and are resistant to rust and corrosion. Vintage filament bulbs are recommended to complete a stylish look.

DETAILS	
FINISH:	Black
MATERIAL:	Composite
GLASS:	Clear Seedy

DIMENSIONS	
WIDTH:	7"
HEIGHT:	12"
WEIGHT:	4 lbs.
BACK PLATE:	5"W X 6.5"H
EXTENSION:	6.8"
TOP TO OUTLET:	4.75"

LIGHT SOURCE	
LIGHT SOURCE:	Socket
WATTAGE:	1-100w Med.
VOLTAGE:	120v

SHIPPING	
CARTON LENGTH:	15"
CARTON WIDTH:	10"
CARTON HEIGHT:	12"
CARTON WEIGHT:	5.5 lbs.

#### PRODUCT DETAILS:

- Mounting hardware is hidden on the backplate to ensure a clean silhouette.
- Suitable for use in wet (outdoor direct rain or sprinkler) locations as defined by NEC and CEC. Meets United States UL Underwriters Laboratories & CSA Canadian Standards Association Product Safety Standards
- Ideal for vintage filament bulbs (not included)
- 5 year finish warranty
- The Coastal Elements Collection offers versatile designs, constructed of composite materials and coated with anti-fading finishes, for maximum durability in harsh climates.
- Sophisticated and streamlined design, durable construction and timeless finish complement any architectural style
- Striking black finish enhances design
- Please refer to Hinkley's Warranty for complete product warranty details; some warranty limitations may apply.

# HINKLEY

HINKLEY  
33000 Pin Oak Parkway  
Avon Lake, OH 44012

PHONE: (440) 653-5500  
Toll Free: 1 (800) 446-5539

[hinkley.com](http://hinkley.com)

**GENERAL ELEVATION NOTES**

1. SEE GENERAL NOTES ON COVER SHEET (PAGE A - 0.0) AND COORDINATE WITH ALL OTHER DOCUMENTS OF SERVICE.
2. WHERE DIMENSIONAL RELATIONSHIPS ARE INDICATED RELATIVE TO CENTERLINES ("CL") AND/OR BY USE OF DESIGNATIONS SUCH AS "EQ / EQ", "ALIGN WITH", "MATCH", ETC. THOSE DIMENSIONAL RELATIONSHIPS SHALL TAKE PRECEDENCE OVER ANY AND ALL OTHER NUMERIC DIMENSIONS INDICATED ON DRAWINGS. ALL DIMENSIONS HEREIN ARE SUBJECT TO, AND DERIVED FROM, THIS CONDITION BEING TRUE.
3. WHERE SIDING IS PROVIDED, ALL SIDING TO BE SMOOTH FIBER CEMENT BOARD OR PRE-PRIMED CEDAR, UNLESS OTHERWISE NOTED. INSTALLATION AS PER MANUFACTURER INSTRUCTIONS. ANY WORK NOT INSTALLED AS PER MANUFACTURER INSTRUCTIONS (INCLUDING ANY SEEMINGLY MINOR ITEMS, E.G. PRIMING CUT ENDS, ETC.) WILL BE REMOVED AND REPLACED AT CONTRACTOR'S EXPENSE. THIS IS TYPICAL FOR INSTALLATION OF ANY ITEM IN THIS CONSTRUCTION DOCUMENT SET.
4. WHERE EXTERIOR TRIM IS PROVIDED, ALL TRIM MATERIALS (INCLUDING FASCIA, FRIEZE, WINDOW TRIM, SILL, ETC.) TO BE PRE-PRIMED CEDAR, PVC, OR CENTURION PINE, PAINTED, UNLESS OTHERWISE NOTED. OTHER ALTERNATIVES THAT ARE ROT AND INSECT RESISTANT MAY BE SUBMITTED TO ARCHITECT FOR WRITTEN APPROVAL. WHERE TRIM IS IN CONTACT WITH STUCCO, STONE, OR CONCRETE, OR IN CLOSE PROXIMITY TO SOIL OR HARD SURFACE, TRIM MATERIAL TO BE PVC.
5. SLOPE GRADE AND ANY TERRACE OR HARD SURFACE AWAY FROM STRUCTURE FOR POSITIVE DRAINAGE, ENTIRE PERIMETER, TYP., UNLESS OTHERWISE DETAILED ON DRAWINGS.
6. ROOF SLOPE IS INTENDED AS A GUIDE. FOR ANY NEW ROOF SLOPE THAT IS INTENDED TO MATCH AN EXISTING ROOF SLOPE, ALL DIMENSIONS AND SLOPE HEREIN ARE SUBJECT TO, AND DERIVED FROM, THIS CONDITION BEING TRUE.
7. EACH BEDROOM IS REQUIRED TO HAVE EGRESS COMPLIANT WINDOW. CONTRACTOR TO ENSURE ACTUAL WINDOW PURCHASED IS COMPLIANT AND INSTALLED TO MEET ALL MINIMUM EGRESS REQUIREMENTS. (780 CMR 51- 310 AS OF 2/4/11: 20"X24" CL OPNG, 44" MAX. SILL; CONTRACTOR TO VERIFY)
8. WHEN PROJECT IS IN HISTORIC DISTRICT, CONTRACTOR TO COMPLY WITH HDC APPROVAL AND CERTIFICATE OF APPROPRIATENESS; INCLUDING APPROVED MATERIAL SPECIFICATIONS (ROOFING, SIDING, WINDOWS, TRIM TYPE, COLOR, ETC.) AND APPROVED DRAWINGS.
9. ELEVATION HEIGHTS ON ELEVATION SHEET TYPICALLY BASED ON AN ASSUMED DATUM OF "0" FOR 1ST FLOOR ELEVATION AND IS NOT INTENDED TO REFLECT SEA LEVEL. SEE LAND SURVEY FOR ELEVATIONS RELATED TO SEA LEVEL.

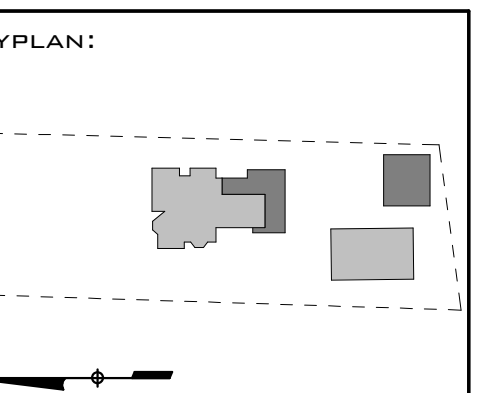


**INNOVATIVE COLLABORATIONS, INC.**  
**AWARD WINNING ARCHITECTURE & DESIGN**  
 309 CONGRESS ST. BOSTON, MA 02210  
 Ph: 617.695.3777 | Fx: 866.828.9943

©COPYRIGHT 2015, INNOVATIVE COLLABORATIONS, INC. THE DESIGN, SPECIFICATIONS, DETAILS AND SPECIFICATIONS ARE INSTRUMENTS OF SERVICE AND ARE THE PROPERTY OF INNOVATIVE COLLABORATIONS, INC. THEY MAY NOT BE DUPLICATED, COPIED, REPRODUCED, OR USED WITHOUT PRIOR WRITTEN CONSENT.  
 THESE DRAWINGS ARE A PROGRESS DRAWING SET USED FOR BIDDING, PERMITTING, AND/OR A BASIC BUILDER'S SET. THESE DRAWINGS ARE INTENDED TO COMMUNICATE AND CONVEY THE DESIGN INTENT OF THE PROJECT. PERMIT SET IS INTENDED TO MEET THE MINIMUM STANDARDS REQUIRED BY THE LOCAL BUILDING DEPARTMENT. THEY ARE NOT FINAL CONSTRUCTION DOCUMENTS AND ADDITIONAL DRAWINGS, FURTHER DOCUMENTATION, QUALITY CONTROL SPECIFICATIONS AND DETAILS MAY BE NECESSARY (SUCH AS INTERIOR DETAILS & CABINET/BATHROOM ELEVATIONS, ETC.) TO HAVE A SUCCESSFUL PROJECT. AS SUCH, PROGRESS DRAWINGS MAY CONTAIN DISCREPANCIES AND/OR OMISSIONS. FURTHER CONSTRUCTION DOCUMENTS, DETAILS, AND SPECIFICATIONS SHALL BE PROVIDED UPON REQUEST.

CONSULTANT:

STAMP:



PROJECT:  
**300 ELLIOT STREET**  
 NEWTON UPPER FALLS, MA 02464

SUBMITTALS:

01	APPROVED HISTORICAL DOCUMENTS	2021.04.10
02	APPROVED SPECIAL PERMIT DOCUMENTS	2021.12.14

DRAWING TITLE:  
**GARAGE ELEVATIONS**

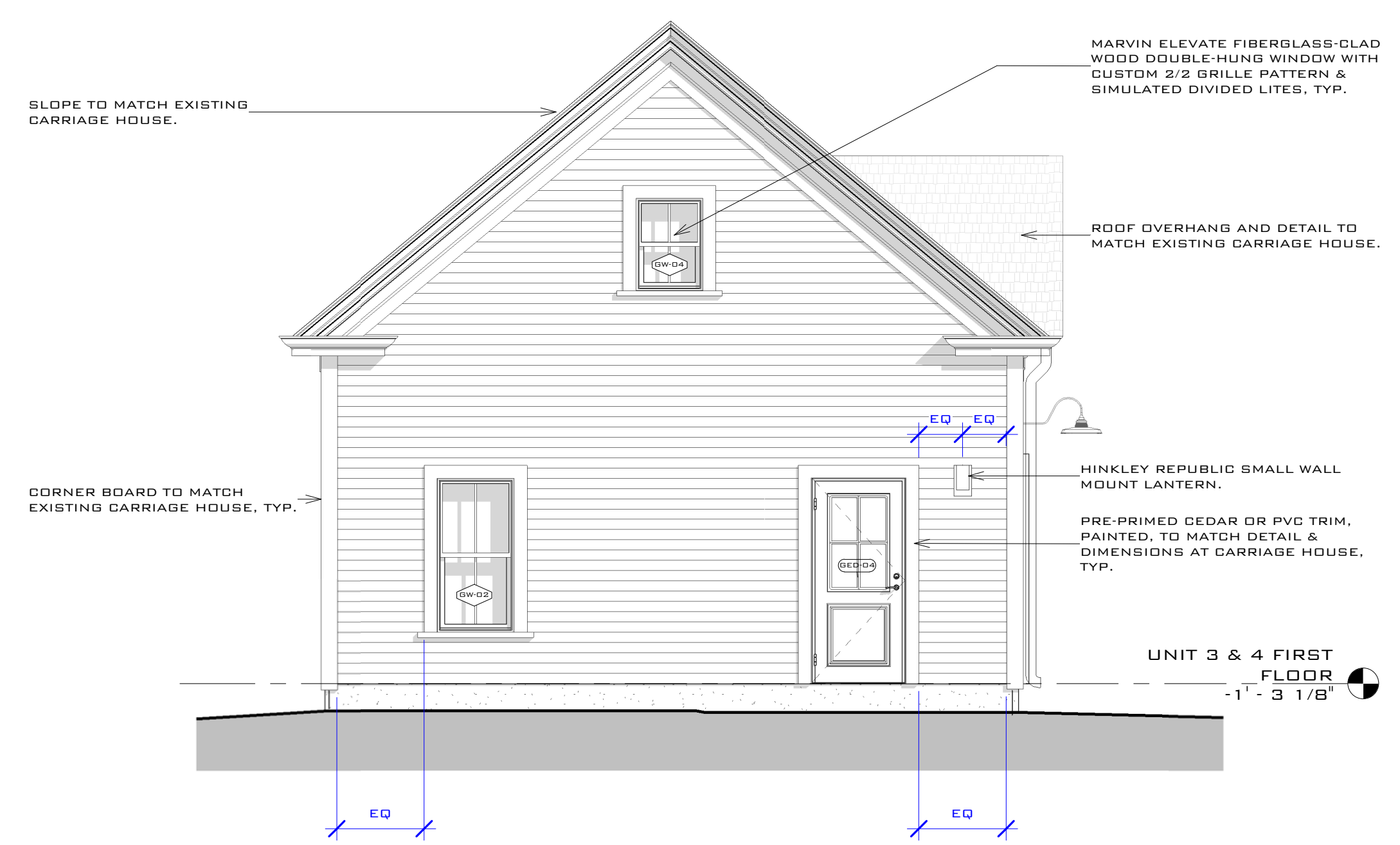
DATE: **04-04-2022**

DRAWN BY: **DR**

CHECKED BY: **CD**

SCALE: **N.T.S.**

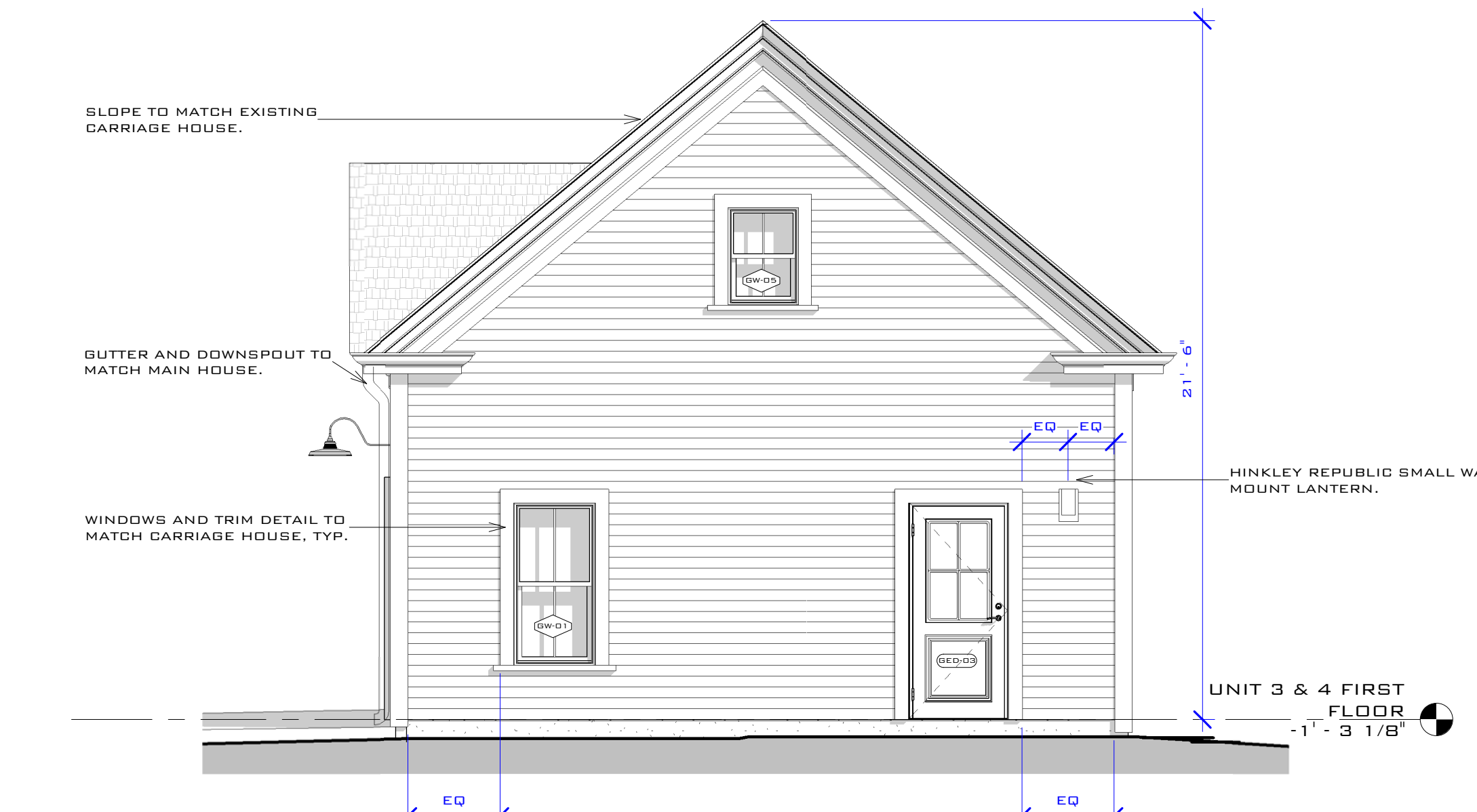
PROJECT NUMBER: **2021-25**  
 SHEET NUMBER:  
**A2.4**  
 6/9/2022 2:48:01 PM



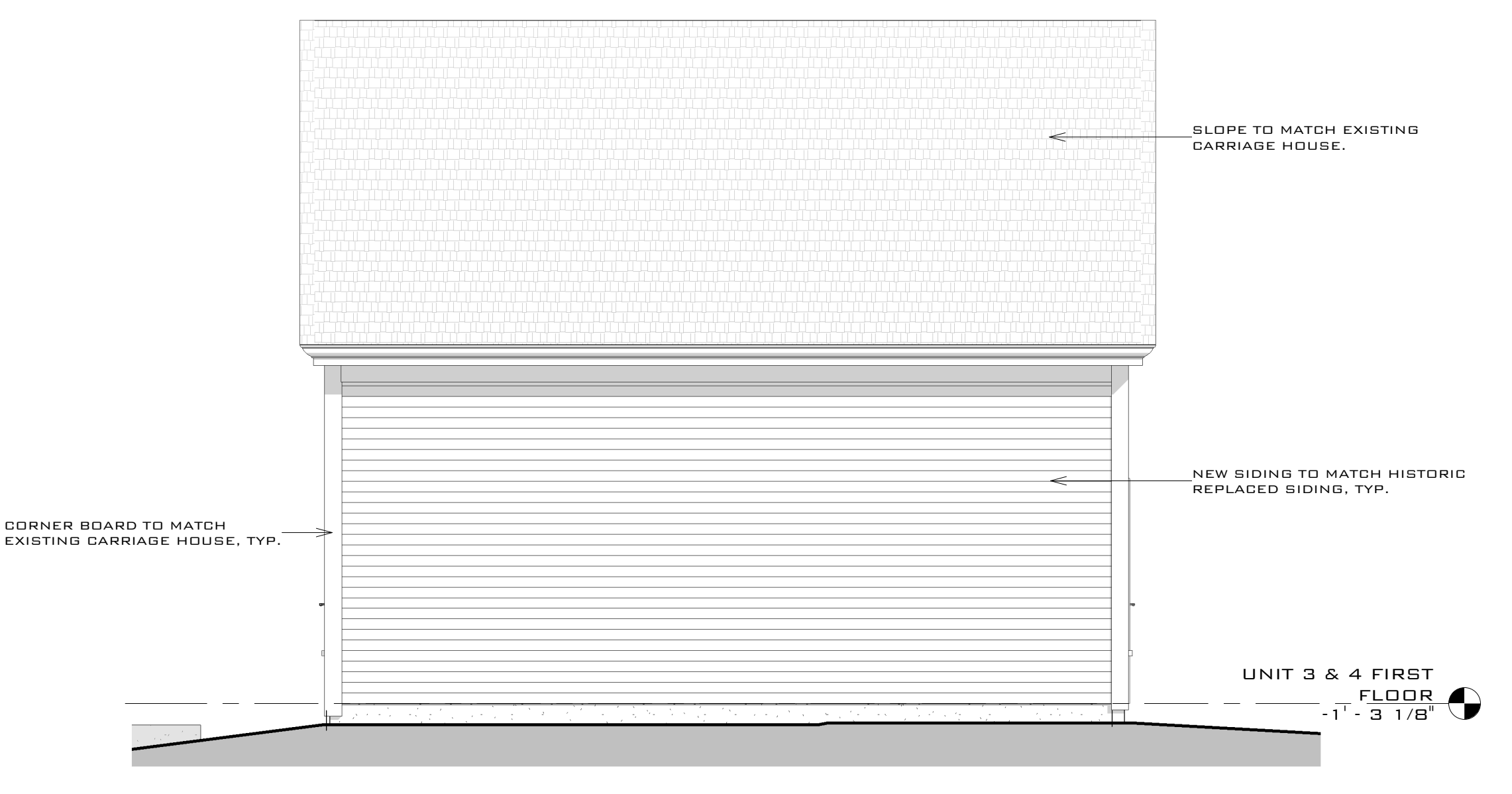
1 GARAGE EAST ELEVATION  
 1/4" = 1'-0"



3 GARAGE FRONT ELEVATION  
 1/4" = 1'-0"



2 GARAGE WEST ELEVATION  
 1/4" = 1'-0"



4 GARAGE REAR ELEVATION  
 1/4" = 1'-0"

**GARAGE ROOF HEIGHT AS PREVIOUSLY SUBMITTED - UNABLE TO RAISE HEIGHT DUE TO ZONING RESTRICTION.**

**GARAGE DOOR GRAPHIC UPDATED TO REFLECT APPROVED GARAGE DOOR SPECIFICATION.**

**AS REQUESTED, EXTERIOR LIGHTS ARE SHOWN.**

**PERMIT SET**