



Franklin Elementary School

School Building Committee/ Design Review Committee

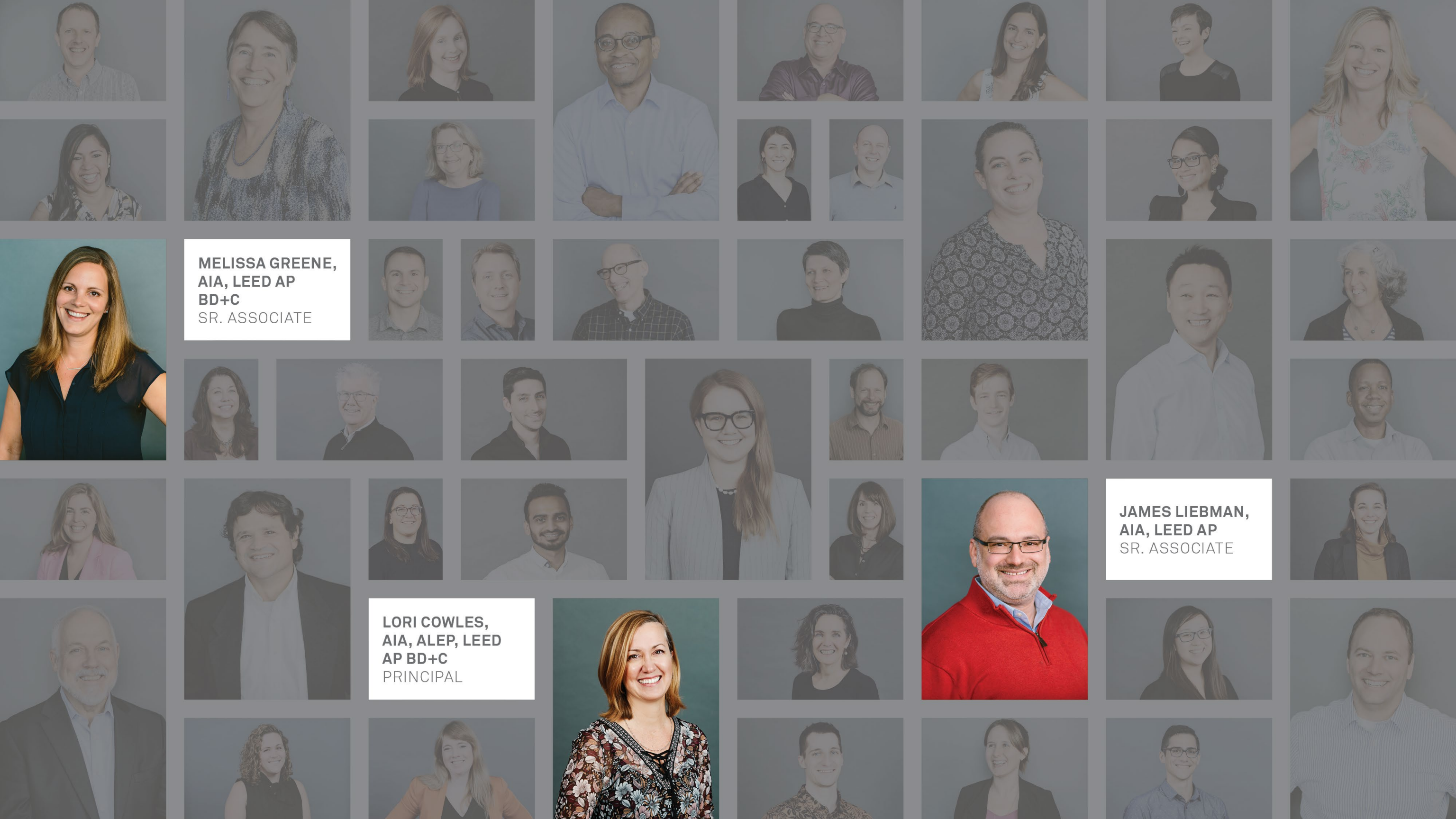
Newton, MA

JUNE 9, 2022



HMFH ARCHITECTS





MELISSA GREENE,
AIA, LEED AP
BD+C
SR. ASSOCIATE

JAMES LIEBMAN,
AIA, LEED AP
SR. ASSOCIATE

LORI COWLES,
AIA, ALEP, LEED
AP BD+C
PRINCIPAL



City of Newton

Schematic Design through Construction

HMFH ARCHITECTS

Lori Cowles, AIA, ALEP, LEED AP BD+C
PROJECT DIRECTOR

James Liebman, AIA, LEED AP
PROJECT MANAGER

Melissa Greene, AIA, LEED AP BD+C
PROJECT ARCHITECT

Madaline Hale, IIDA, LEED AP ID+C
LIBRARY / MEDIA

WBE Certified

CONSULTANTS

Samiotes Consultants *WBE*
ENVIRONMENTAL PERMITTING,
SITE SURVEY, CIVIL ENGINEERING

McPhail Associates
GEOTECHNICAL AND GEOENVIRONMENTAL

Foley Buhl Roberts & Associates
STRUCTURAL ENGINEERING

Lemon Brooke *WBE DBE*
LANDSCAPE ARCHITECTURE

GGD Consulting Engineers
HVAC, ELECTRICAL, LIGHTING,
DATA/COMM, SECURITY

AKAL Engineering *MBE*
PLUMBING AND FIRE PROTECTION

Public Archaeology Laboratory
ARCHAEOLOGICAL SURVEY

PM&C
COST ESTIMATING

Bryant Associates *MBE*
TRAFFIC

New Vista Design
EDUCATIONAL PROGRAMMING

Hastings Consulting
CODE

**Universal Environmental
Consultants**
HAZARDOUS MATERIALS

The Green Engineer
ENERGY MODELING AND SUSTAINABILITY/
GREEN DESIGN/RENEWABLE ENERGY

Colburn Guyette
Foodservice Design
FOOD SERVICE

Cavanaugh Tocci Associates
ACOUSTICAL

Stefura Associates *WBE*
FURNITURE FIXTURES & EQUIPMENT

KMA
ACCESSIBILITY

Kalin Associates
SPECIFICATIONS

	Fales Elementary Westborough, MA	Thompson Elementary Arlington, MA	Sprague Elementary Wellesley, MA	Florida Ruffin Ridley Brookline, MA	Woodland Elementary Milford, MA	Carver Elementary Carver, MA	Fairhaven Elementary Fairhaven, MA	3 Concord Elem Schools Concord, NH	Carlisle K-8 School Carlisle, MA	Lincoln Elem Schools Lincoln, MA	Bates Elementary Wellesley, MA	Armstrong Elementary Westborough, MA
Educational Planning Process	●	●	●	●	●	●	●	●	●	●	●	●
MSBA	●	●		●	●	●	●		●			
Community Engagement	●	●	●	●	●	●	●	●	●	●	●	●
Historically Significant			●	●						●		
Successful Vote	●	●	●	●	●	●	●	●	●	●	●	●
Add/Reno			●	●					●	●	●	●
Sustainable	Net-Positive Energy	CHPS Verified	●	LEED Gold	LEED Silver	CHPS Certified	CHPS Verified	CHPS Certified	CHPS Verified	●	●	●



HMFH because:

Sustainability
Educational design
Community process

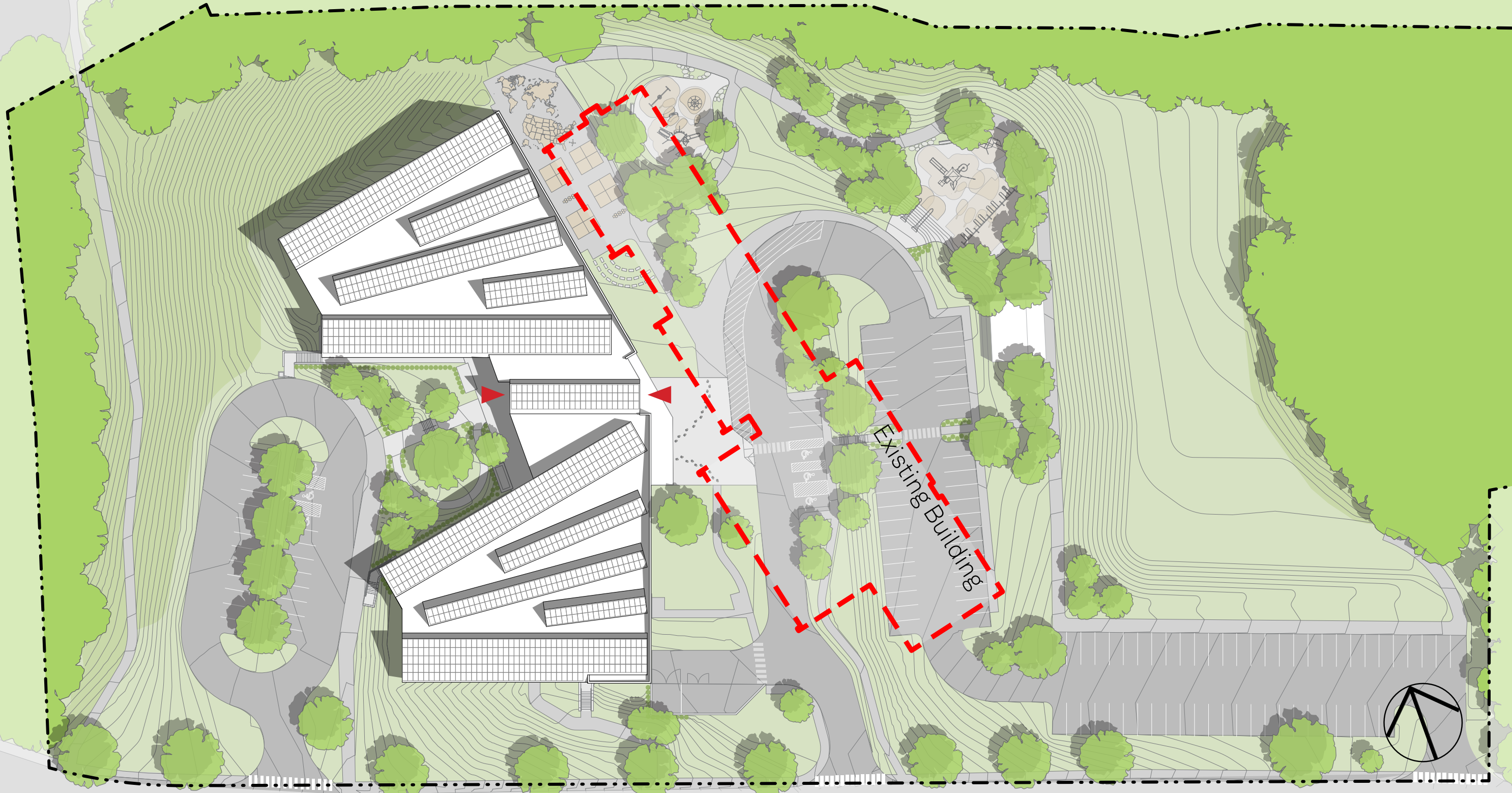


Annie E. Fales Elementary

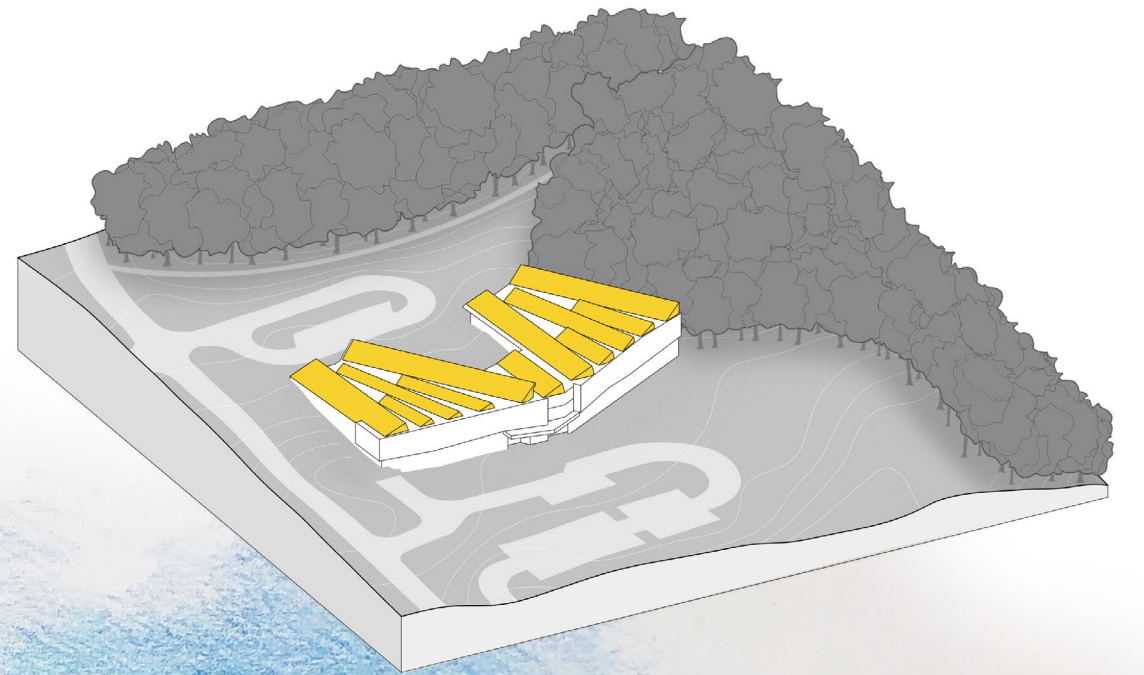
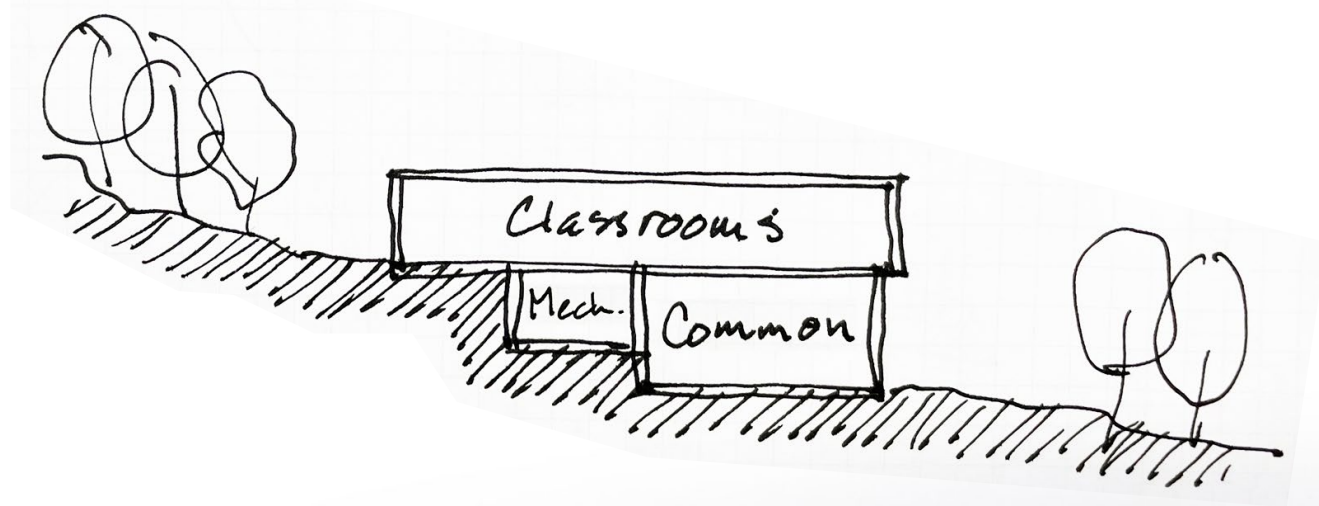
WESTBOROUGH, MA

- all new on same site
- net-positive energy
- all-electric, fossil fuel free
- foster connections to nature
- foster environmental stewardship

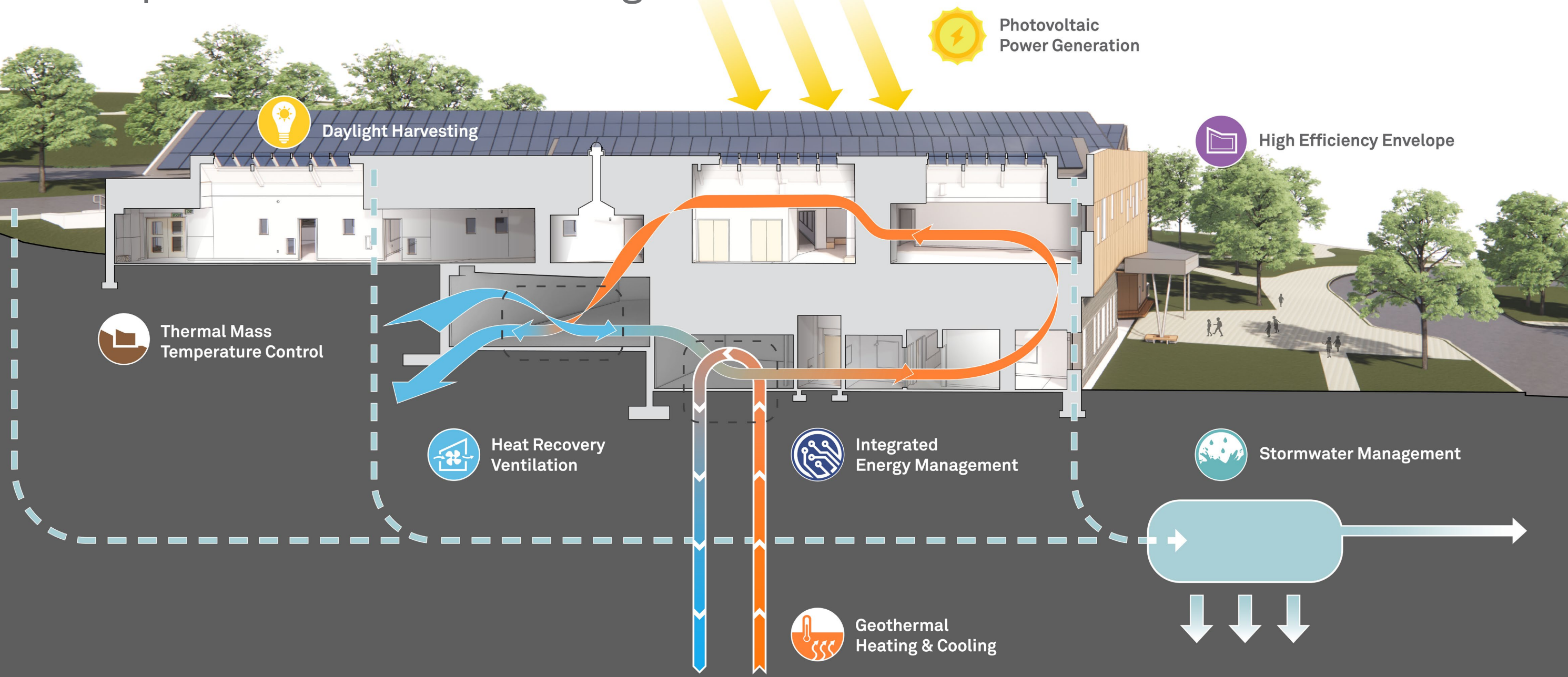




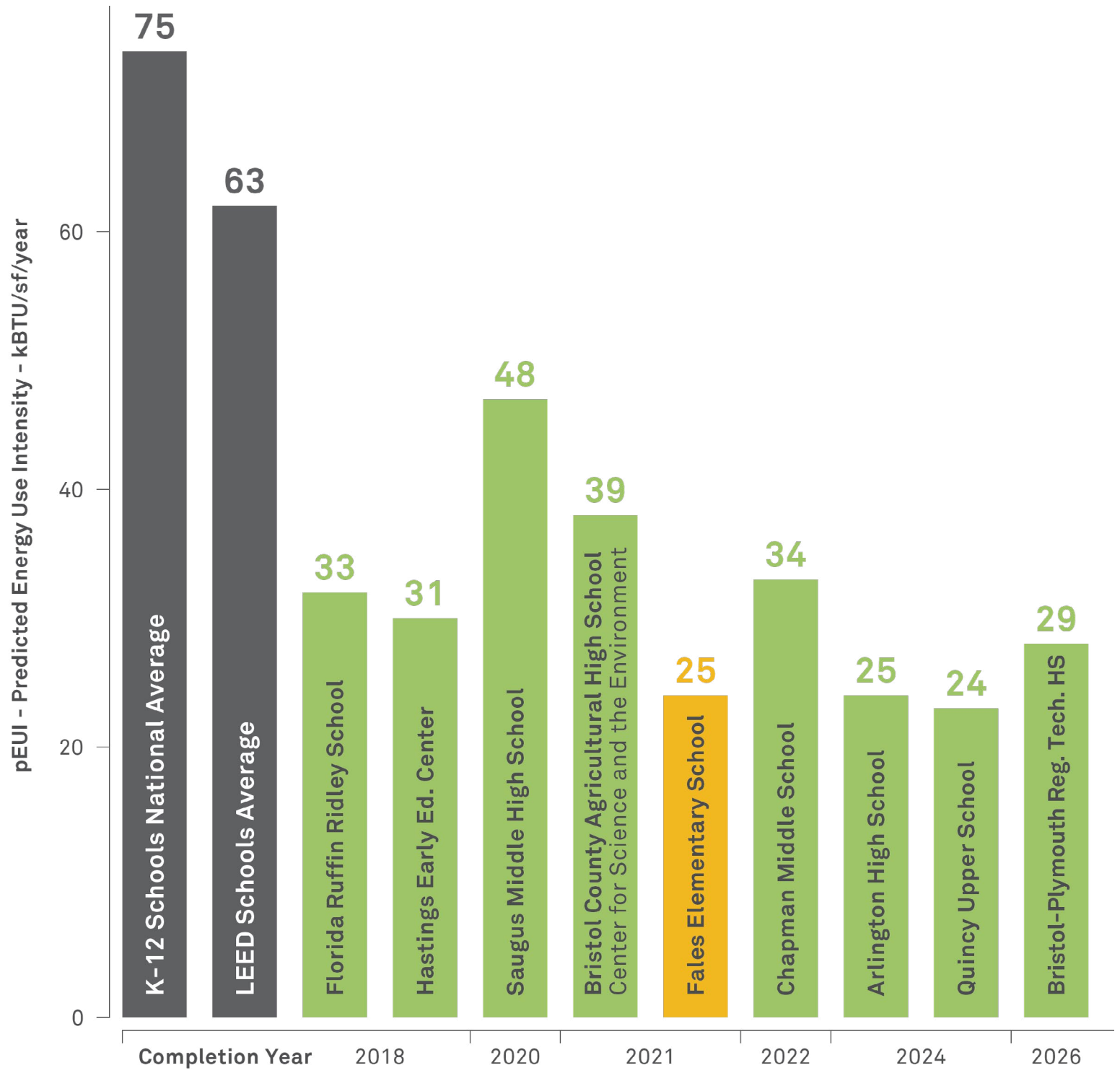
Eli Whitney St.



The 1st **NET-POSITIVE ENERGY** public school in New England



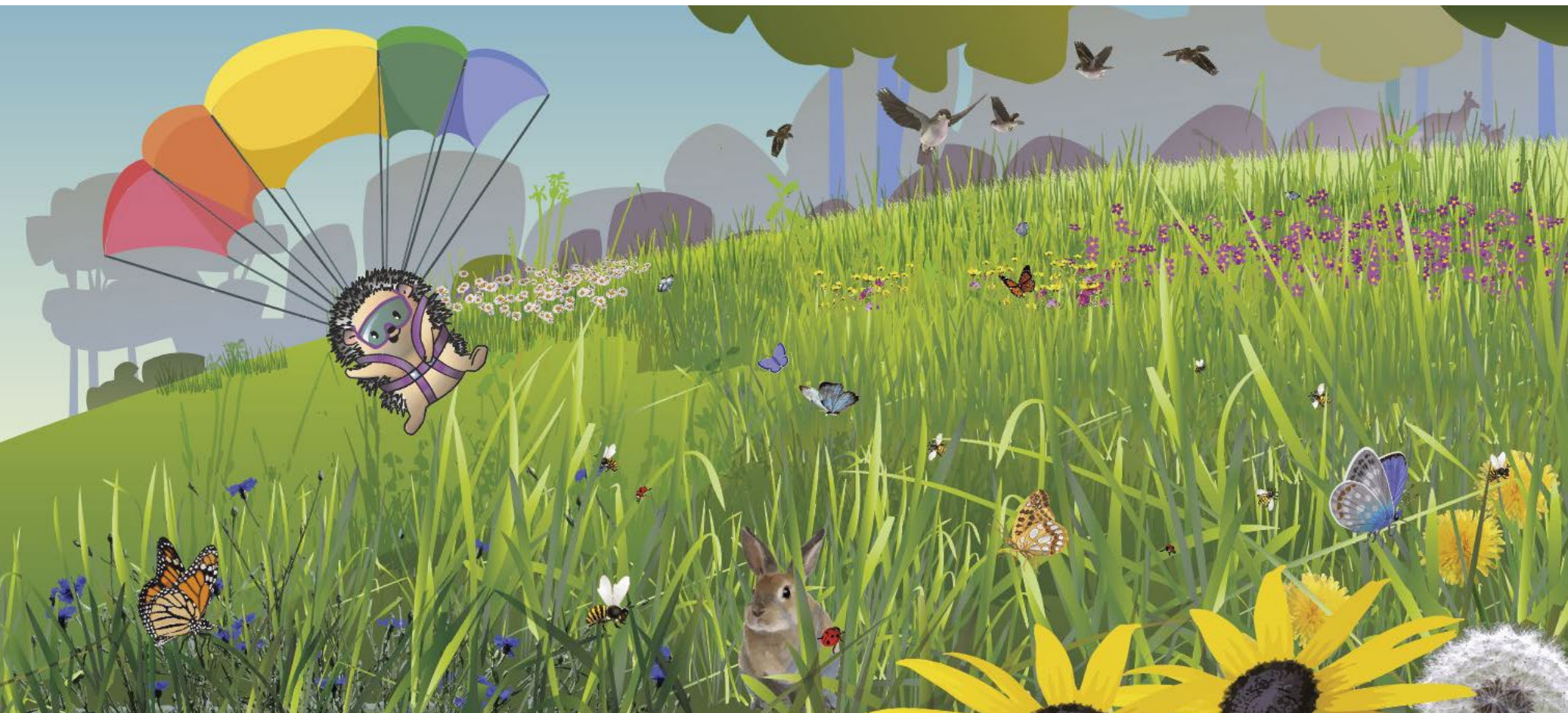
Energy Use Intensity



Connections to surrounding nature



Connections to
surrounding nature
&
fostering
environmental
stewardship





Our new school educates students about the natural environment and sustainable practices, and we hope it inspires a life-long care for the world they live in.

AMBER BOCK, SUPERINTENDENT

Thompson Elementary

ARLINGTON, MA

- all new on existing footprint
- neighborhood school
- child-centric educational spaces
- outdoor learning
- whimsical elements





Everett Street

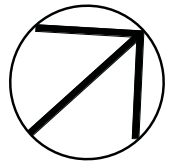
Broadway

North Union Park

North Union Street

SCHOOL GARDENS

Purcell Road





THOMPSON SCHOOL

187

20
13









HMFH far exceeded Arlington Public Schools' expectations in the design of the Thompson Elementary School. It is a very lively, inspiring and welcoming place for our children to learn.

KATHLEEN BODIE, FORMER SUPERINTENDENT



Florida Ruffin Ridley School

BROOKLINE, MA

- addition/renovation
- historic reuse
- extensive community process
- community access
- outdoor learning
- student experience





EDWARD DEVOTION HOUSE/
BROOKLINE HISTORICAL SOCIETY

GARAGE ENTRANCE/ EXIT

STEDMAN STREET

ARRIVAL AREA

RAIN GARDEN
PRE-K/ K PLAY
AREA

PAVEMENT WITH
PLAY MARKINGS
U-10 SOCCER FIELD

WATER PLAY
COMMUNITY
BASKETBALL COURTS

HARVARD STREET

1913 BUILDING

COMMUNITY PATH

GENTLE MOUNDS

DEVOTION STREET

NATURAL PLAY
LOWER GRADE PLAY AREA
UPPER GRADE PLAY AREA

COMMUNITY PATH

PLAY AREA
COMMUNITY LAWN

HISTORIC OAKS
OUTDOOR
CLASSROOMS

SCHOOL GARDEN











The design honors the building's historic legacy ... while presenting a fresh and joyful environment for children.

DAVID POLLAK, FORMER SCHOOL COMMITTEE CHAIR



PRE-FEASIBILITY

GOAL:

To understand options for Franklin Elementary School including the costs and schedule implications for either additions and renovations of the existing building or building new.

SCOPE:

- PRELIMINARY SITE ASSESSMENT
- PRELIMINARY EDUCATIONAL PROGRAM AND VISIONING
- CONCEPTUAL OPTIONS AND COSTS

PROGRESS

- May 23 - Franklin Working Group Meeting
- May 31 - Tour of Franklin, Zervas, Cabot, and Angier
- June 6 - Franklin Working Group Meeting
- **June 9 - Franklin School Building Committee**
- June 13 - Franklin Enrollment and Programming Meeting
Newton Parks and Recreation Meeting
- June 27 - Franklin Working Group Meeting

Q & A

HMFH ARCHITECTS