



# Brown/Oak Hill School Conceptual Field Improvements Project

City of Newton

**Michael Dodson**

Project Manager  
CDM Smith

**Jon Bronenkant**

Landscape Architect  
CDM Smith

**Luis Perez Demorizi**

Director of Newton  
Parks, Recreation &  
Culture Department

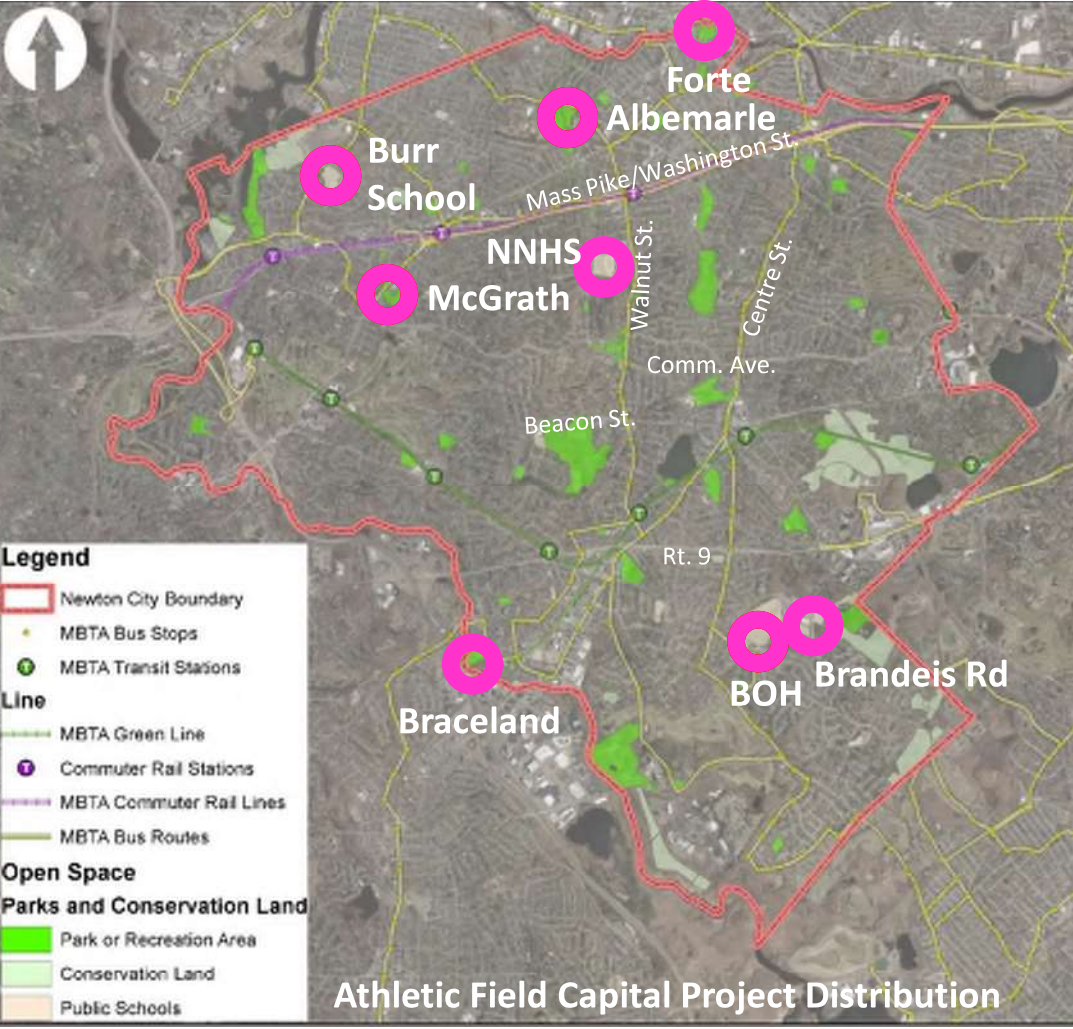
*June 13, 2022*

**CDM  
Smith.**



**5-YEAR STRATEGIC PLAN**



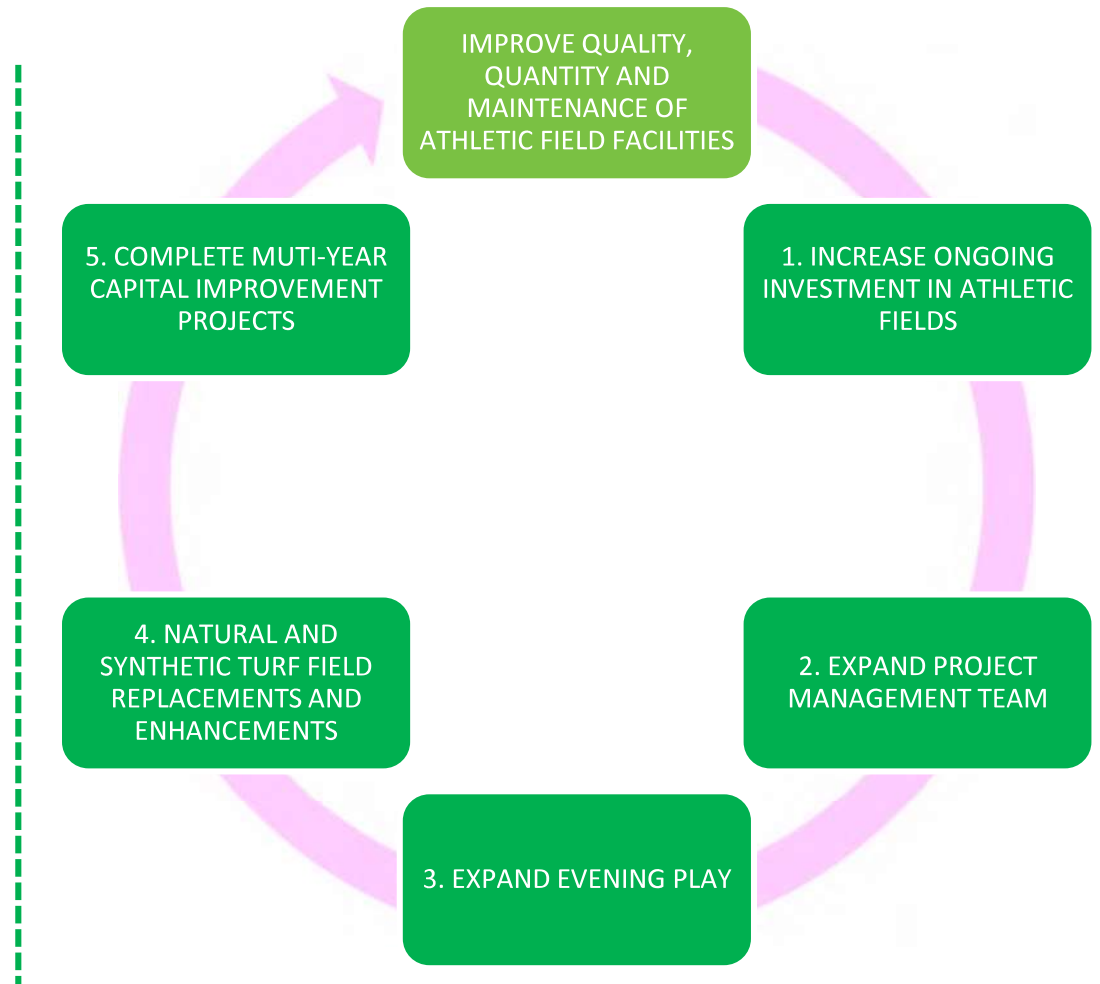


**5-YEAR STRATEGIC PLAN**

- Albemarle Park
- Forte Park
- Burr School
- Brown/Oak Hill Fields
- McGrath Park
- Bobby Braceland
- Newton South Brandeis Rd. Field Lighting
- Newton North Tiger Stadium Lighting
- NSHS Synthetic Turf Replacement
- NNHS Synthetic Turf Replacement

TOTAL: 10 Locations

Newton Parks, Recreation and Culture Department  
**Athletic Fields Capital Improvement Plan**



## RECOMMENDED FIELD DIMENSIONS

Sport (1)	Minimum Field Dimension	Maximum Field Dimension
<b>High School Sports</b>		
HS Football (2)	160-ft x 360-ft	Same as minimum dimensions
HS Soccer	165-ft x 300-ft	240-ft x 360-ft
HS Girl's Lacrosse	180-ft x 330-ft	210-ft x 420-ft
HS Boy's Lacrosse	180-ft x 330-ft	Same as minimum dimensions
HS Boys and Girls Unified Lacrosse	160-ft x 300-ft	180-ft x 360-ft
HS Field Hockey	180-ft x 300-ft	Same as minimum dimensions
HS Baseball	90-ft baseline; 60'-6" pitcher's mound to home plate; 300-ft foul lines; 350-ft center field	Same as minimum dimensions
<b>Youth Soccer</b>		
Youth Soccer-U6: 4 v 4	45-ft x 75-ft	75-ft x 125-ft
Youth Soccer-U7: 4 v 4	45-ft x 75-ft	75-ft x 125-ft
Youth Soccer-U8: 4 v 4	45-ft x 75-ft	75-ft x 125-ft
Youth Soccer-U9: 7 v 7	105-ft x 165-ft	135-ft x 195-ft
Youth Soccer-U10: 7 v 7	105-ft x 165-ft	135-ft x 195-ft
Youth Soccer-U11: 9 v 9	135-ft x 210-ft	165-ft x 240-ft
Youth Soccer-U12: 9 v 9	135-ft x 210-ft	165-ft x 240-ft
Rugby (3)	223-ft x 374-ft	228.7-ft x 472.4-ft
<b>Youth Baseball</b>		
Little League Baseball - T-Ball, Minor League, Little League (Majors) (4)	60-ft baseline; 46-ft pitcher's mound; 200-ft or more foul lines; T-Ball may use 50-ft baseline	Same as minimum dimensions
Little League Baseball Intermediate Division (50-70 Division) (5)	70-ft baseline; 50' pitcher's mound to home plate; 200-ft foul lines	Same as minimum dimensions
Little League Baseball Junior League, Senior League (6)	90-ft baseline; 60'-6" pitcher's mound to home plate; 300-ft foul lines	Same as minimum dimensions
<b>Softball</b>		
Softball- Female Fast Pitch (HS)	60-ft baseline; 43-ft pitcher's mound to home plate; 185-ft baselines	60-ft baseline; 43-ft pitcher's mound to home plate; 235-ft baselines
Softball- Male Fast Pitch (HS)	60-ft baseline; 46-ft pitcher's mound to home plate; 185-ft baselines	60-ft baseline; 46-ft pitcher's mound to home plate; 235-ft baselines
Softball-Female Slow Pitch	60-ft baseline; 46-ft pitcher's mound to home plate; 250-ft baselines	60-ft baseline; 46-ft pitcher's mound to home plate; 275-ft baselines
Softball-Male Slow Pitch (Men's softball)	60-ft baseline; 46-ft pitcher's mound to home plate; 225-ft baselines	60-ft baseline; 46-ft pitcher's mound to home plate; 300-ft baselines

## Thank you!

- Luis Perez Demorizi

Director of Parks, Recreation & Culture

- Greg Mellett

Assistant Director of Parks, Recreation & Culture

- Nicole Banks

Commissioner of Parks, Recreation & Culture



## Agenda

- Background
- Goals
- Existing Conditions
- Opportunities & Constraints
- Conceptual Site Plans
- Schedule
- Next Steps



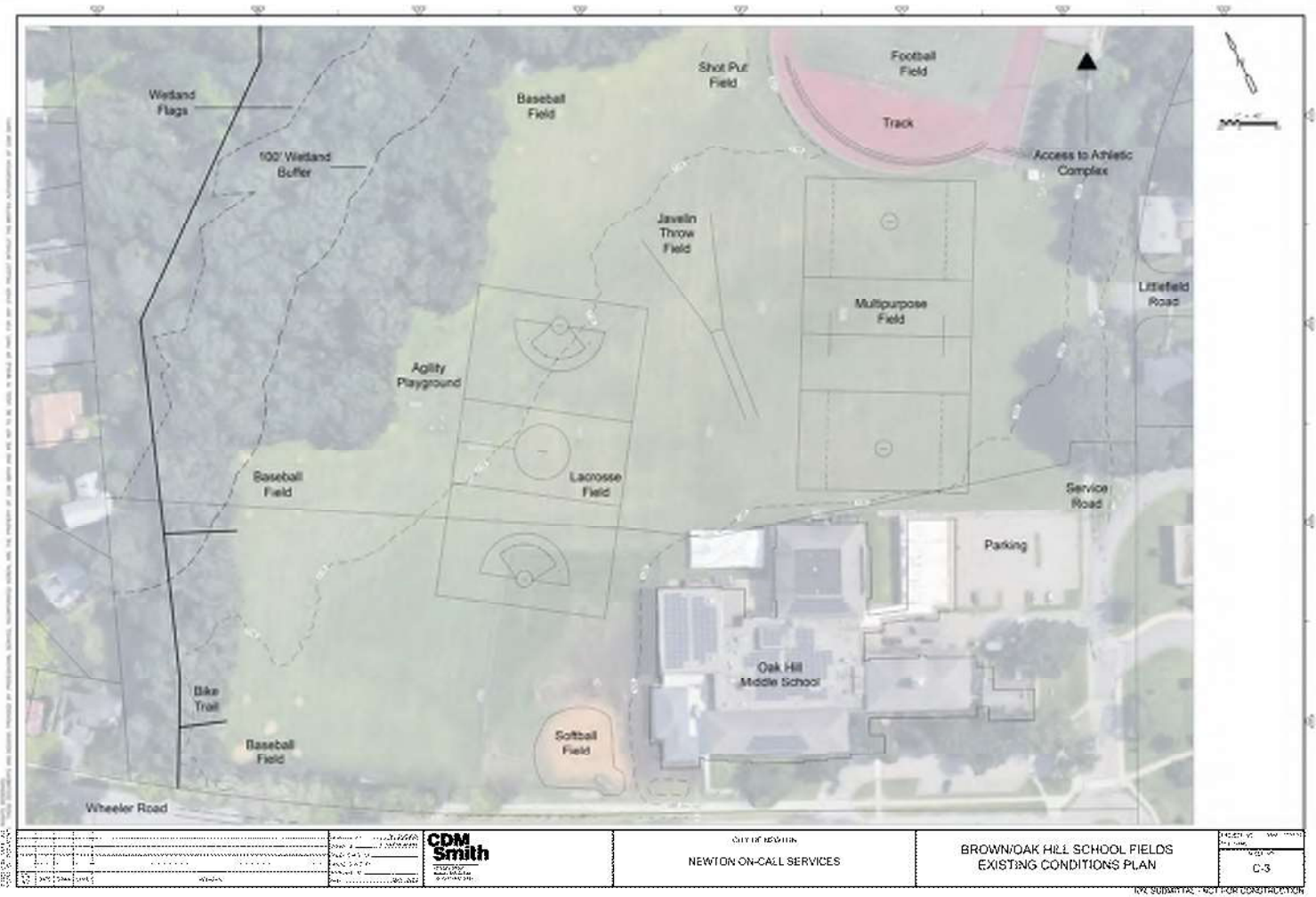
## Project Goals: Brown/Oak Hill Fields

- Maximize field and site layout for increased permitted multi-purpose field space
- Regrade field and improve drainage
- Expand irrigation
- Improve accessibility and install perimeter path
- Relocate baseball field
- Install shade trees
- Provide seating





# Existing Conditions Plan



<table border="1"> <tr> <td>DATE</td> <td>DESCRIPTION</td> </tr> <tr> <td> </td> <td> </td> </tr> <tr> <td> </td> <td> </td> </tr> <tr> <td> </td> <td> </td> </tr> </table>	DATE	DESCRIPTION							<p><b>CDM Smith</b>          CONSULTING ENGINEERS          1000 W. 10th Street          Suite 200          Lincoln, NE 68502          (402) 441-1000</p>	<p>CITY OF NEWTON          NEWTON ON-CALL SERVICES</p>	<p>BROWN/OAK HILL SCHOOL FIELDS          EXISTING CONDITIONS PLAN</p>	<p>PROJECT NO. 15-0000          SHEET NO. C-3          DATE: 11/15/15</p>
DATE	DESCRIPTION											

NOT SUBMITTABLE FOR CONSTRUCTION

## Existing Conditions



## Existing Conditions

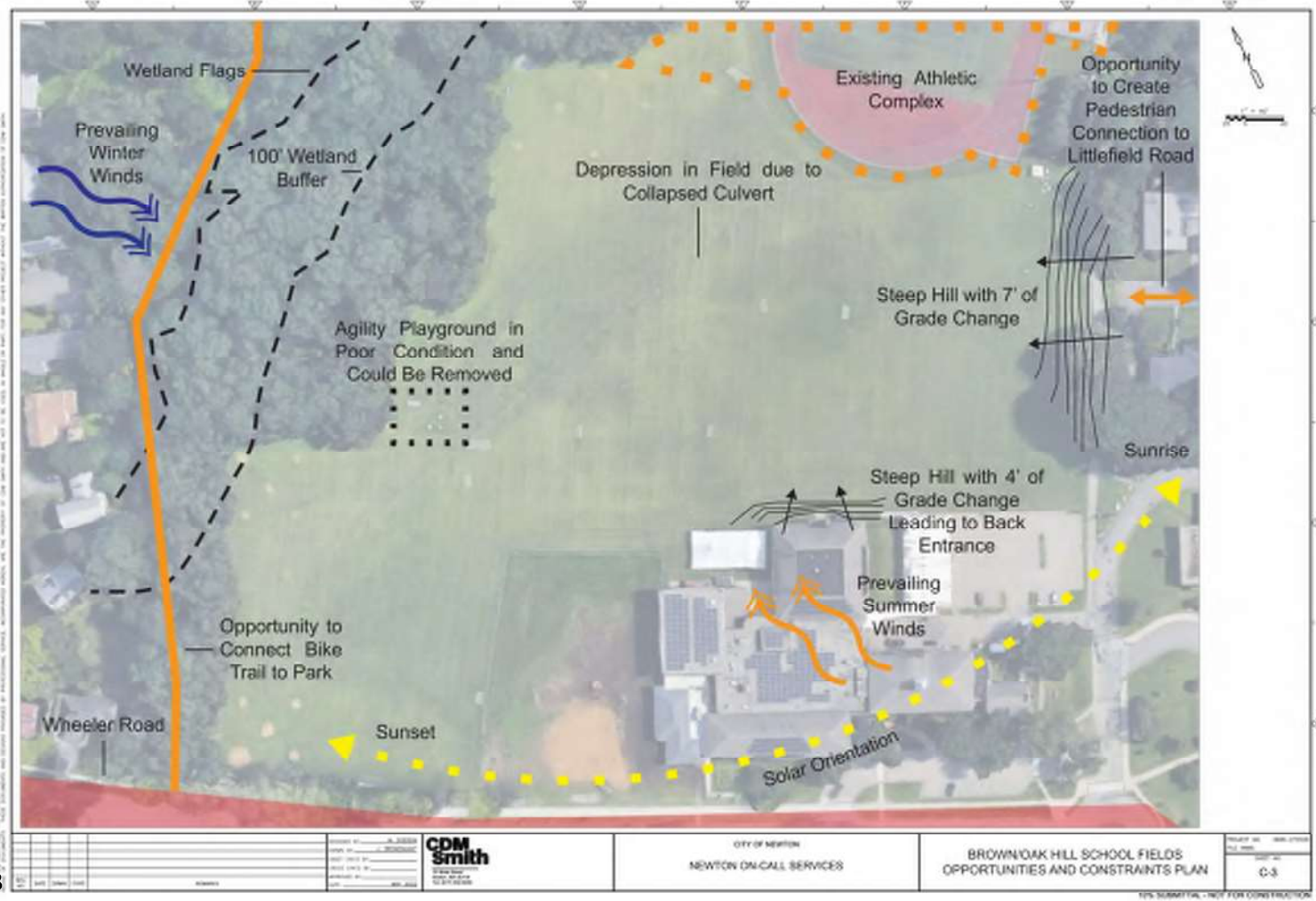




## Existing Conditions



# Site Opportunities and Constraints







# Schedule

## Burr School



## McGrath Park



## Brown/Oak Hill School

