



Burr Elementary School Conceptual Field Improvements Project

City of Newton

Michael Dodson

Project Manager
CDM Smith

Jon Bronenkant

Landscape Architect
CDM Smith

Luis Perez Demorizi

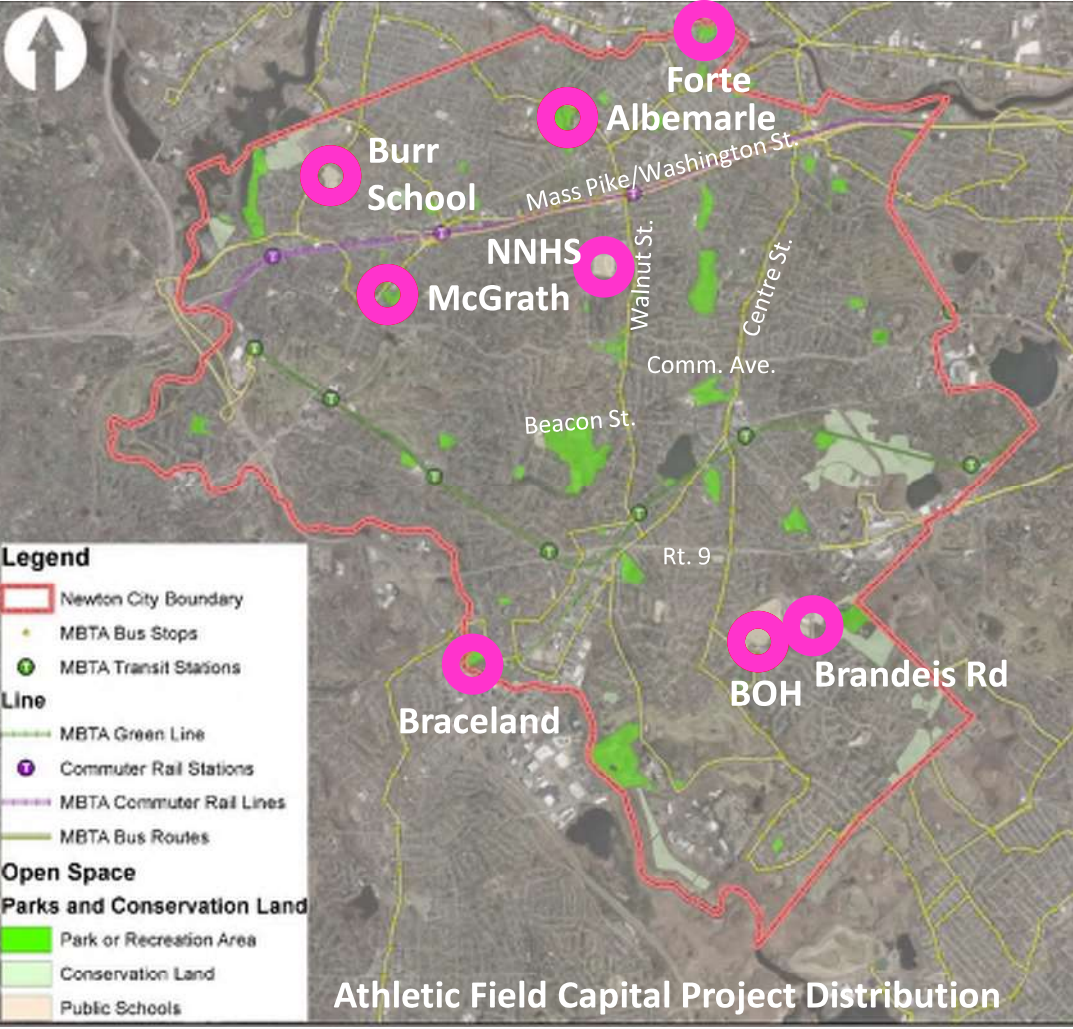
Director of Newton Parks,
Recreation & Culture
Department

June 13, 2022

**CDM
Smith.**



5-YEAR STRATEGIC PLAN

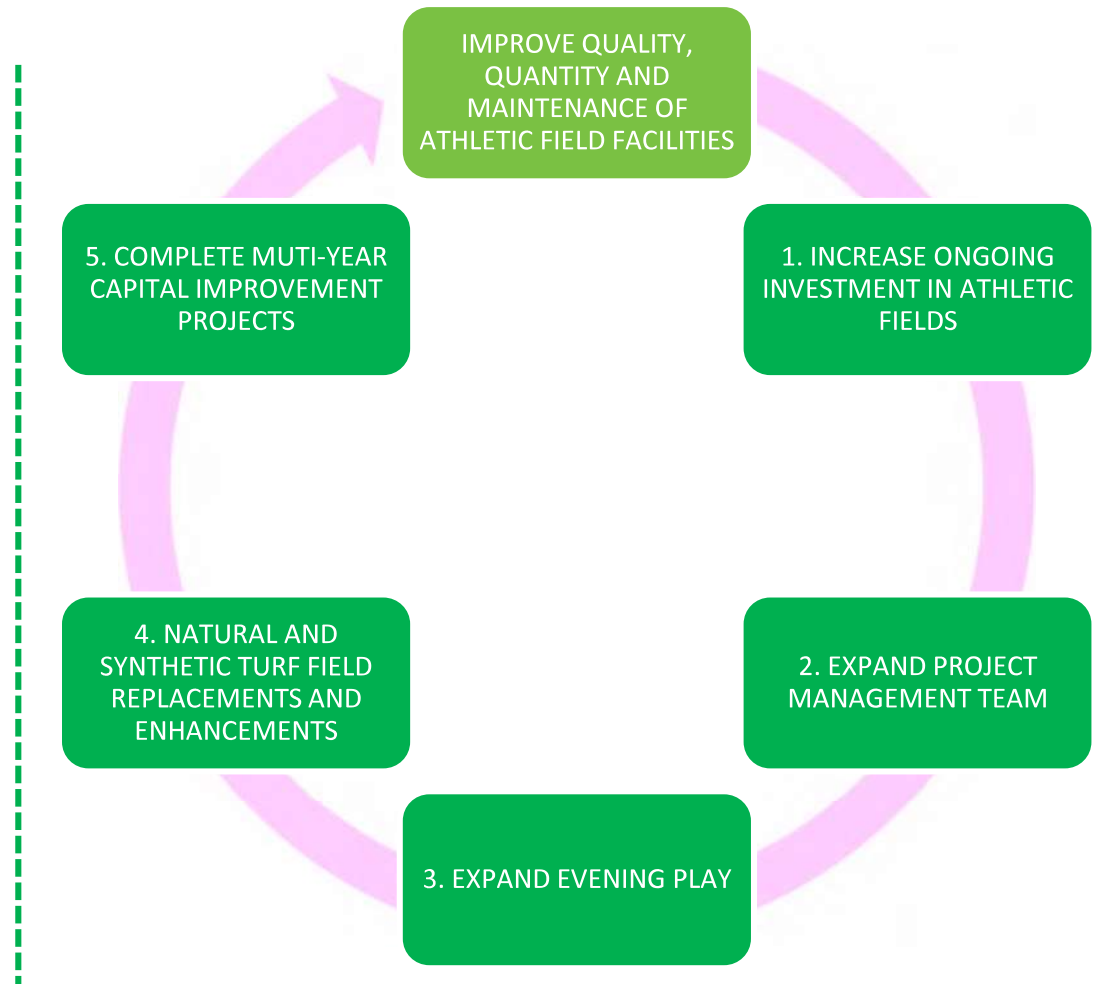


5-YEAR STRATEGIC PLAN

- Albemarle Park
- Forte Park
- Burr School
- Brown/Oak Hill Fields
- McGrath Park
- Bobby Braceland
- Newton South Brandeis Rd. Field Lighting
- Newton North Tiger Stadium Lighting
- NSHS Synthetic Turf Replacement
- NNHS Synthetic Turf Replacement

TOTAL: 10 Locations

Newton Parks, Recreation and Culture Department
Athletic Fields Capital Improvement Plan



RECOMMENDED FIELD DIMENSIONS

Sport (1)	Minimum Field Dimension	Maximum Field Dimension
High School Sports		
HS Football (2)	160-ft x 360-ft	Same as minimum dimensions
HS Soccer	165-ft x 300-ft	240-ft x 360-ft
HS Girl's Lacrosse	180-ft x 330-ft	210-ft x 420-ft
HS Boy's Lacrosse	180-ft x 330-ft	Same as minimum dimensions
HS Boys and Girls Unified Lacrosse	160-ft x 300-ft	180-ft x 360-ft
HS Field Hockey	180-ft x 300-ft	Same as minimum dimensions
HS Baseball	90-ft baseline; 60'-6" pitcher's mound to home plate; 300-ft foul lines; 350-ft center field	Same as minimum dimensions
Youth Soccer		
Youth Soccer-U6: 4 v 4	45-ft x 75-ft	75-ft x 125-ft
Youth Soccer-U7: 4 v 4	45-ft x 75-ft	75-ft x 125-ft
Youth Soccer-U8: 4 v 4	45-ft x 75-ft	75-ft x 125-ft
Youth Soccer-U9: 7 v 7	105-ft x 165-ft	135-ft x 195-ft
Youth Soccer-U10: 7 v 7	105-ft x 165-ft	135-ft x 195-ft
Youth Soccer-U11: 9 v 9	135-ft x 210-ft	165-ft x 240-ft
Youth Soccer-U12: 9 v 9	135-ft x 210-ft	165-ft x 240-ft
Rugby (3)	223-ft x 374-ft	225.7-ft x 472.4-ft
Youth Baseball		
Little League Baseball - T-Ball, Minor League, Little League (Majors) (4)	60-ft baseline; 46-ft pitcher's mound; 200-ft or more foul lines; T-Ball may use 50-ft baseline	Same as minimum dimensions
Little League Baseball Intermediate Division (50-70 Division) (5)	70-ft baseline; 50' pitcher's mound to home plate; 200-ft foul lines	Same as minimum dimensions
Little League Baseball Junior League, Senior League (6)	90-ft baseline; 60'-6" pitcher's mound to home plate; 300-ft foul lines	Same as minimum dimensions
Softball		
Softball- Female Fast Pitch (HS)	60-ft baseline; 43-ft pitcher's mound to home plate; 185-ft baselines	60-ft baseline; 43-ft pitcher's mound to home plate; 235-ft baselines
Softball- Male Fast Pitch (HS)	60-ft baseline; 46-ft pitcher's mound to home plate; 185-ft baselines	60-ft baseline; 46-ft pitcher's mound to home plate; 235-ft baselines
Softball-Female Slow Pitch	60-ft baseline; 46-ft pitcher's mound to home plate; 250-ft baselines	60-ft baseline; 46-ft pitcher's mound to home plate; 275-ft baselines
Softball-Male Slow Pitch (Men's softball)	60-ft baseline; 46-ft pitcher's mound to home plate; 225-ft baselines	60-ft baseline; 46-ft pitcher's mound to home plate; 300-ft baselines

Thank you!

- Luis Perez Demorizi

Director of Parks, Recreation & Culture

- Greg Mellett

Assistant Director of Parks, Recreation & Culture

- Nicole Banks

Commissioner of Parks, Recreation & Culture



Agenda

- Background
- Goals
- Existing Conditions
- Opportunities & Constraints
- Conceptual Site Plans
- Schedule
- Next Steps

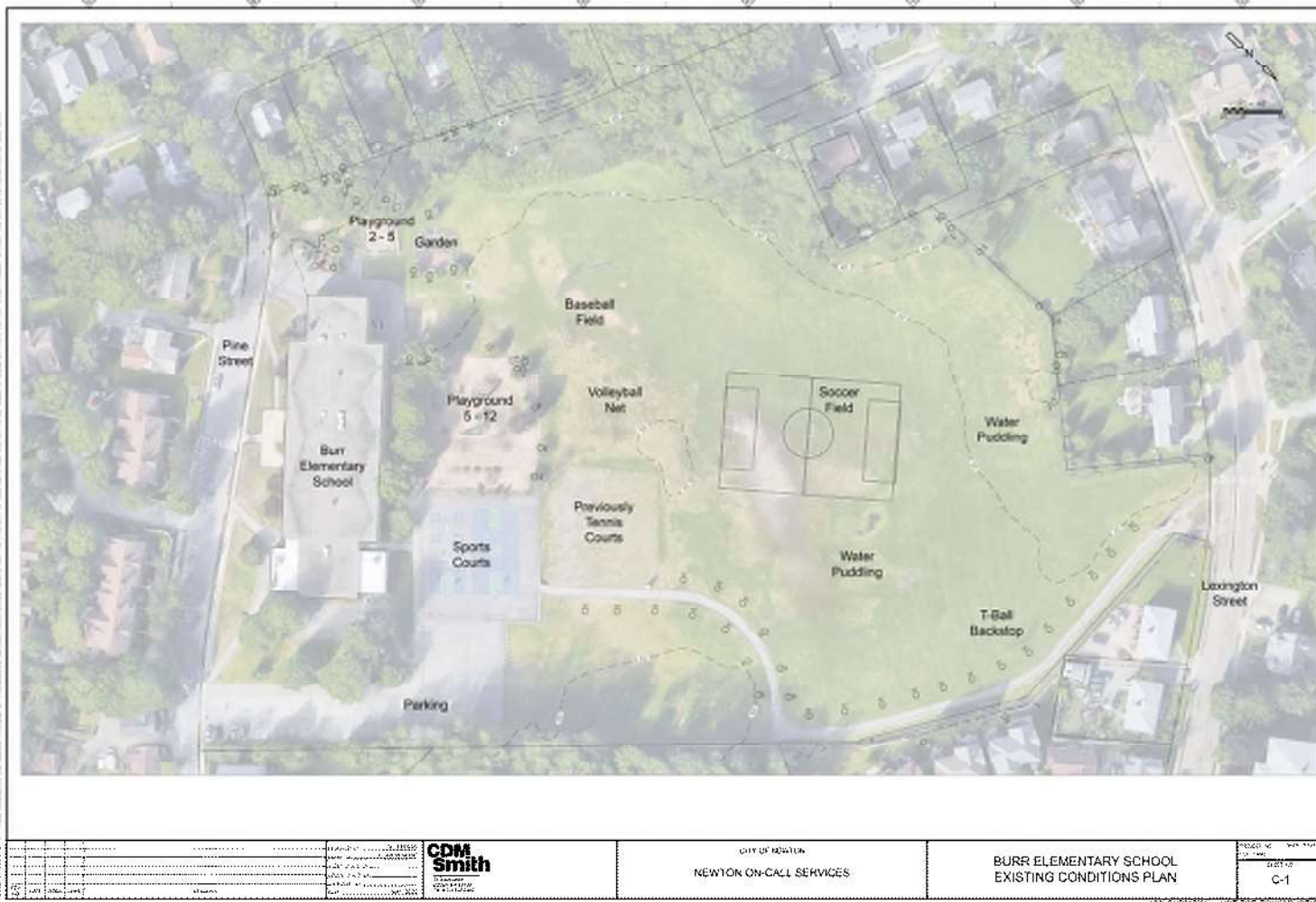


Project Goals: Burr Elementary School

- Maximize field and site layout for increased permitted multi-purpose field space
- Improve accessibility and install perimeter path
- Assess environmental concerns
- Regrade field and improve drainage
- Relocate existing shade trees
- Provide seating
- Install irrigation



Existing Conditions Plan



All information shown on this plan is based on aerial photography and field notes. The property owner should verify the accuracy of the information shown on this plan. The City of Newton reserves the right to amend this plan without notice.

CDM Smith <small>CONSTRUCTION SERVICES</small>		CITY OF NEWTON NEWTON ON-CALL SERVICES	BURR ELEMENTARY SCHOOL EXISTING CONDITIONS PLAN	PROJECT NO. 15-010 DATE 02/17/16 SHEET NO. C-1
--	--	---	--	--

10% SUBMITTAL - NOT FOR CONSTRUCTION

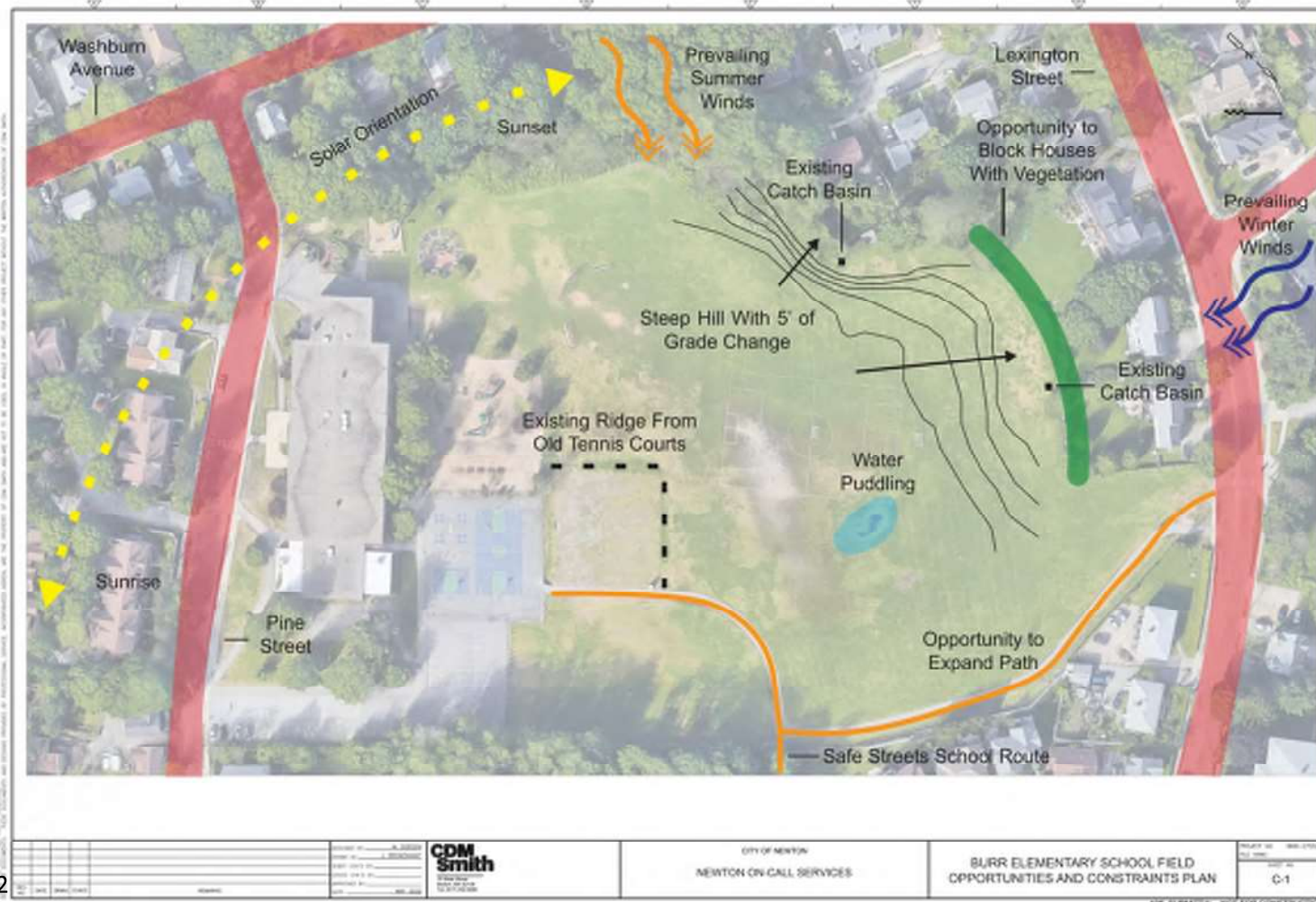
Existing Conditions



Existing Conditions



Site Opportunities and Constraints



Burr Elementary School Field Conceptual Site Plan



ALL RIGHTS RESERVED. NO PART OF THIS DOCUMENT MAY BE REPRODUCED OR TRANSMITTED IN ANY FORM OR BY ANY MEANS, ELECTRONIC OR MECHANICAL, INCLUDING PHOTOCOPYING, RECORDING, OR BY ANY INFORMATION STORAGE AND RETRIEVAL SYSTEM, WITHOUT PERMISSION IN WRITING FROM CDM SMITH. THE INFORMATION CONTAINED HEREIN IS FOR GENERAL INFORMATION ONLY AND IS NOT TO BE USED AS A BASIS FOR ANY DESIGN OR CONSTRUCTION. THE INFORMATION CONTAINED HEREIN IS NOT TO BE USED AS A BASIS FOR ANY DESIGN OR CONSTRUCTION. THE INFORMATION CONTAINED HEREIN IS NOT TO BE USED AS A BASIS FOR ANY DESIGN OR CONSTRUCTION.

PROJECT NO. 15-001 SHEET NO. C-1 DATE 08/15/15	CDM Smith CIVIL ENGINEERING 1000 WEST 10TH AVENUE SUITE 100 DENVER, CO 80202 TEL: 303.733.4000 FAX: 303.733.4001 WWW.CDMSMITH.COM	CITY OF NEWTON NEWTON ON-CALL SERVICES	BURR SCHOOL SITE PLAN	DRAWN BY: JACOB PETERSON CHECKED BY: JACOB PETERSON DATE: 08/15/15
--	---	---	-----------------------	--

Schedule

Burr School



McGrath Park



Brown/Oak Hill School

