



# McGrath Park Conceptual Field Improvements Project

City of Newton

**Michael Dodson**

Project Manager  
CDM Smith

**Jon Bronenkant**

Landscape Architect  
CDM Smith

**Luis Perez Demorizi**

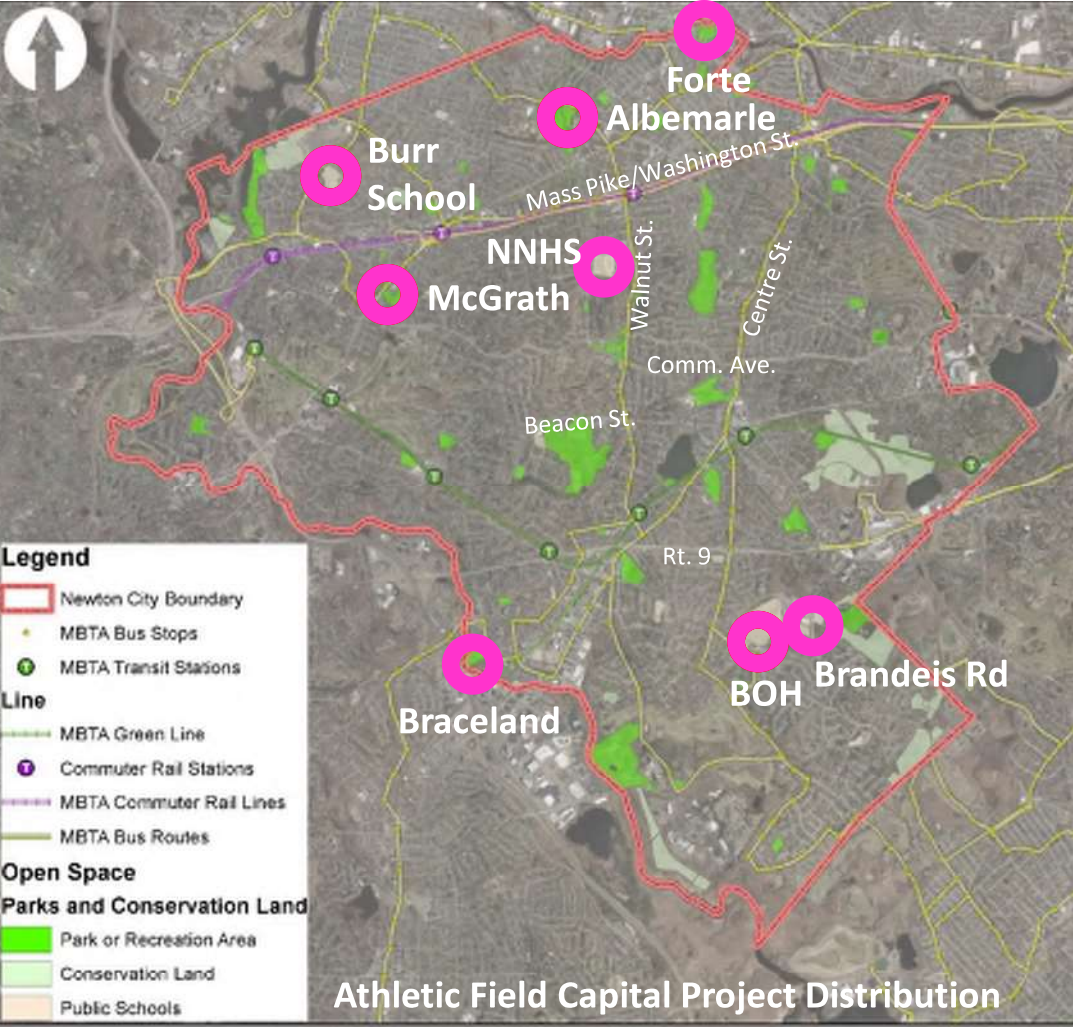
Director of Newton  
Parks, Recreation &  
Culture Department

*June 13, 2022*

**CDM  
Smith.**



**5-YEAR STRATEGIC PLAN**

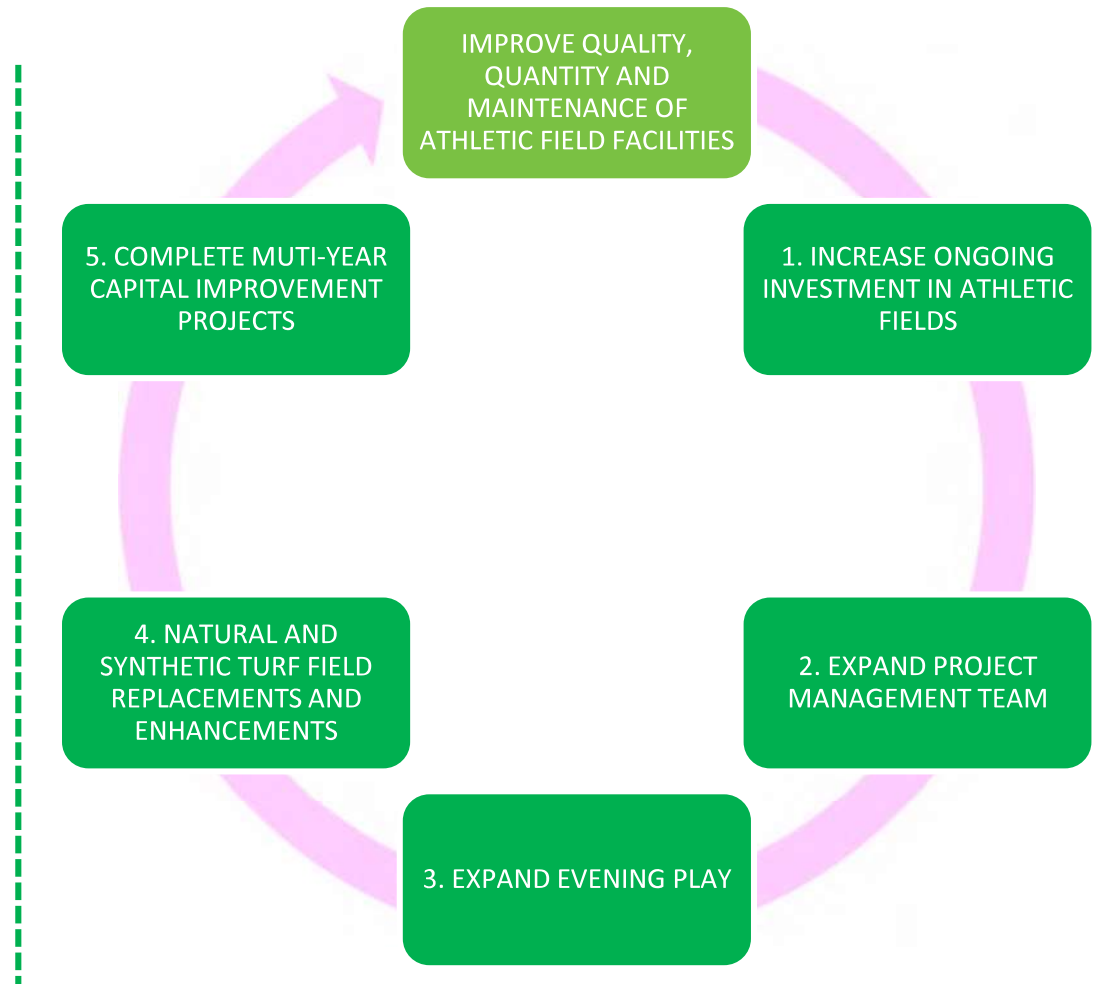


**5-YEAR STRATEGIC PLAN**

- Albemarle Park
- Forte Park
- Burr School
- Brown/Oak Hill Fields
- McGrath Park
- Bobby Braceland
- Newton South Brandeis Rd. Field Lighting
- Newton North Tiger Stadium Lighting
- NSHS Synthetic Turf Replacement
- NNHS Synthetic Turf Replacement

TOTAL: 10 Locations

Newton Parks, Recreation and Culture Department  
**Athletic Fields Capital Improvement Plan**



## RECOMMENDED FIELD DIMENSIONS

Sport (1)	Minimum Field Dimension	Maximum Field Dimension
<b>High School Sports</b>		
HS Football (2)	160-ft x 360-ft	Same as minimum dimensions
HS Soccer	165-ft x 300-ft	240-ft x 360-ft
HS Girl's Lacrosse	180-ft x 330-ft	210-ft x 420-ft
HS Boy's Lacrosse	180-ft x 330-ft	Same as minimum dimensions
HS Boys and Girls Unified Lacrosse	160-ft x 300-ft	180-ft x 360-ft
HS Field Hockey	180-ft x 300-ft	Same as minimum dimensions
HS Baseball	90-ft baseline; 60'-6" pitcher's mound to home plate; 300-ft foul lines; 350-ft center field	Same as minimum dimensions
<b>Youth Soccer</b>		
Youth Soccer-U6: 4 v 4	45-ft x 75-ft	75-ft x 125-ft
Youth Soccer-U7: 4 v 4	45-ft x 75-ft	75-ft x 125-ft
Youth Soccer-U8: 4 v 4	45-ft x 75-ft	75-ft x 125-ft
Youth Soccer-U9: 7 v 7	105-ft x 165-ft	135-ft x 195-ft
Youth Soccer-U10: 7 v 7	105-ft x 165-ft	135-ft x 195-ft
Youth Soccer-U11: 9 v 9	135-ft x 210-ft	165-ft x 240-ft
Youth Soccer-U12: 9 v 9	135-ft x 210-ft	165-ft x 240-ft
Rugby (3)	223-ft x 374-ft	225.7-ft x 472.4-ft
<b>Youth Baseball</b>		
Little League Baseball - T-Ball, Minor League, Little League (Majors) (4)	60-ft baseline; 46-ft pitcher's mound; 200-ft or more foul lines; T-Ball may use 50-ft baseline	Same as minimum dimensions
Little League Baseball Intermediate Division (50-70 Division) (5)	70-ft baseline; 50' pitcher's mound to home plate; 200-ft foul lines	Same as minimum dimensions
Little League Baseball Junior League, Senior League (6)	90-ft baseline; 60'-6" pitcher's mound to home plate; 300-ft foul lines	Same as minimum dimensions
<b>Softball</b>		
Softball- Female Fast Pitch (HS)	60-ft baseline; 43-ft pitcher's mound to home plate; 185-ft baselines	60-ft baseline; 43-ft pitcher's mound to home plate; 235-ft baselines
Softball- Male Fast Pitch (HS)	60-ft baseline; 46-ft pitcher's mound to home plate; 185-ft baselines	60-ft baseline; 46-ft pitcher's mound to home plate; 235-ft baselines
Softball-Female Slow Pitch	60-ft baseline; 46-ft pitcher's mound to home plate; 250-ft baselines	60-ft baseline; 46-ft pitcher's mound to home plate; 275-ft baselines
Softball-Male Slow Pitch (Men's softball)	60-ft baseline; 46-ft pitcher's mound to home plate; 225-ft baselines	60-ft baseline; 46-ft pitcher's mound to home plate; 300-ft baselines

## Thank you!

- Luis Perez Demorizi

Director of Parks, Recreation & Culture

- Greg Mellett

Assistant Director of Parks, Recreation & Culture

- Nicole Banks

Commissioner of Parks, Recreation & Culture



## Agenda

- Background
- Goals
- Existing Conditions
- Opportunities & Constraints
- Conceptual Site Plans
- Schedule
- Next Steps



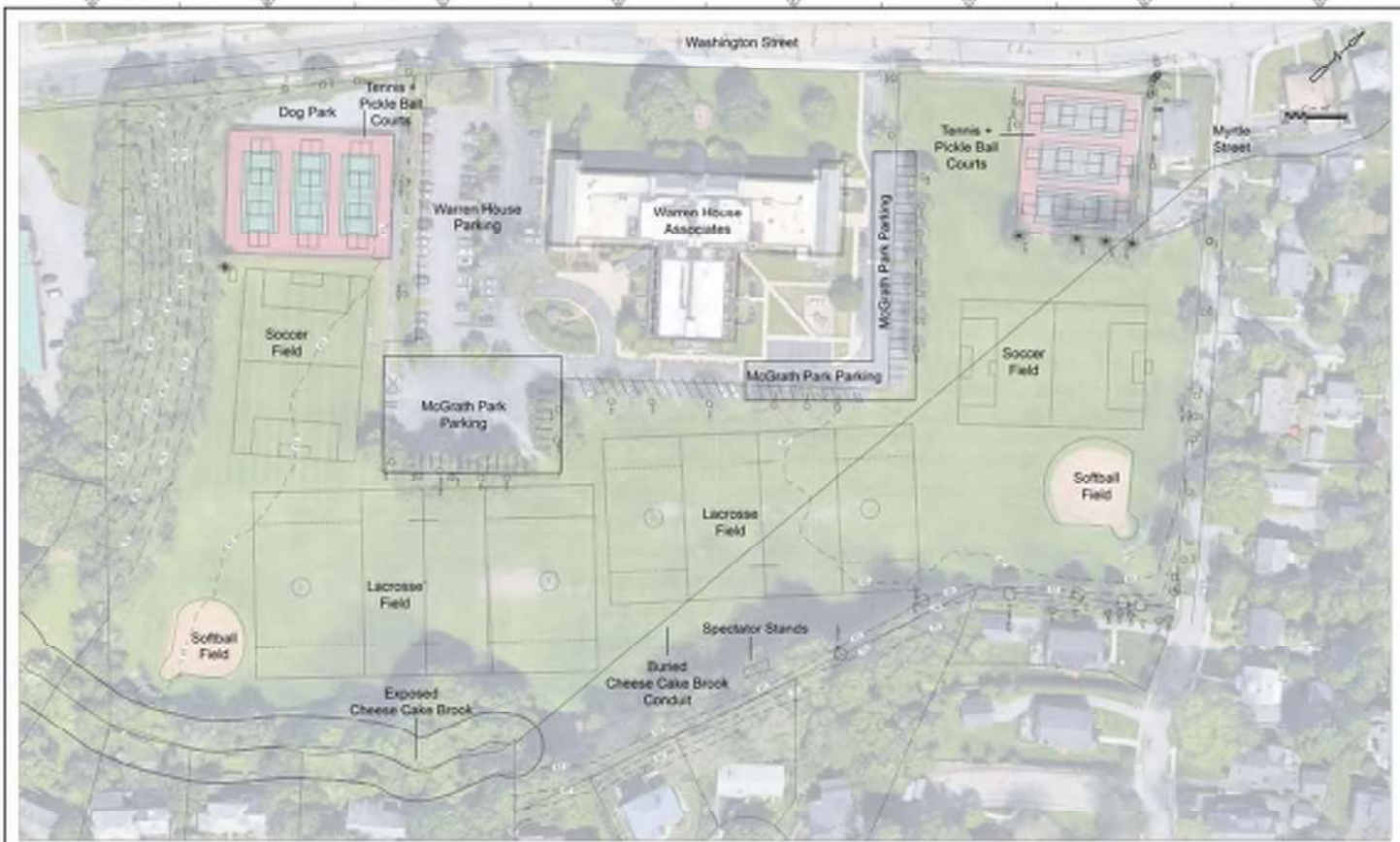
## Project Goals: McGrath Park

- Maximize field and site layout for increased permitted lacrosse field space
- Regrade field and improve drainage
- Remove underutilized backstop and infield
- Expand irrigation to areas where ball fields have been removed
- Improve accessibility and install perimeter path
- Locate lacrosse practice wall
- Install shade trees
- Provide seating





# Existing Conditions Plan



<table border="1"> <tr> <td>DATE</td> <td>DESCRIPTION</td> </tr> <tr> <td> </td> <td> </td> </tr> <tr> <td> </td> <td> </td> </tr> </table>	DATE	DESCRIPTION					PROJECT NO.: 22020 DATE: 08/20/2023 DRAWN BY: J. B. ... CHECKED BY: ... DATE: 08/20/23	<b>CDM Smith</b> CONSULTING ENGINEERS 1115 WEST 17TH AVENUE SUITE 300 DENVER, CO 80202 TEL: 303.733.1200 FAX: 303.733.1201 WWW.CDMSMITH.COM	CITY OF DENVER NEWTON ON-CA/I SERVICES	MCGRATH PARK EXISTING CONDITIONS PLAN SHEET NO. 0-2	DATE: 08/20/23 DRAWN BY: J. B. ... CHECKED BY: ... DATE: 08/20/23
	DATE	DESCRIPTION									
NOT SUBMITTAL. NOT FOR CONSTRUCTION.											
23											

## Existing Conditions



## Existing Conditions



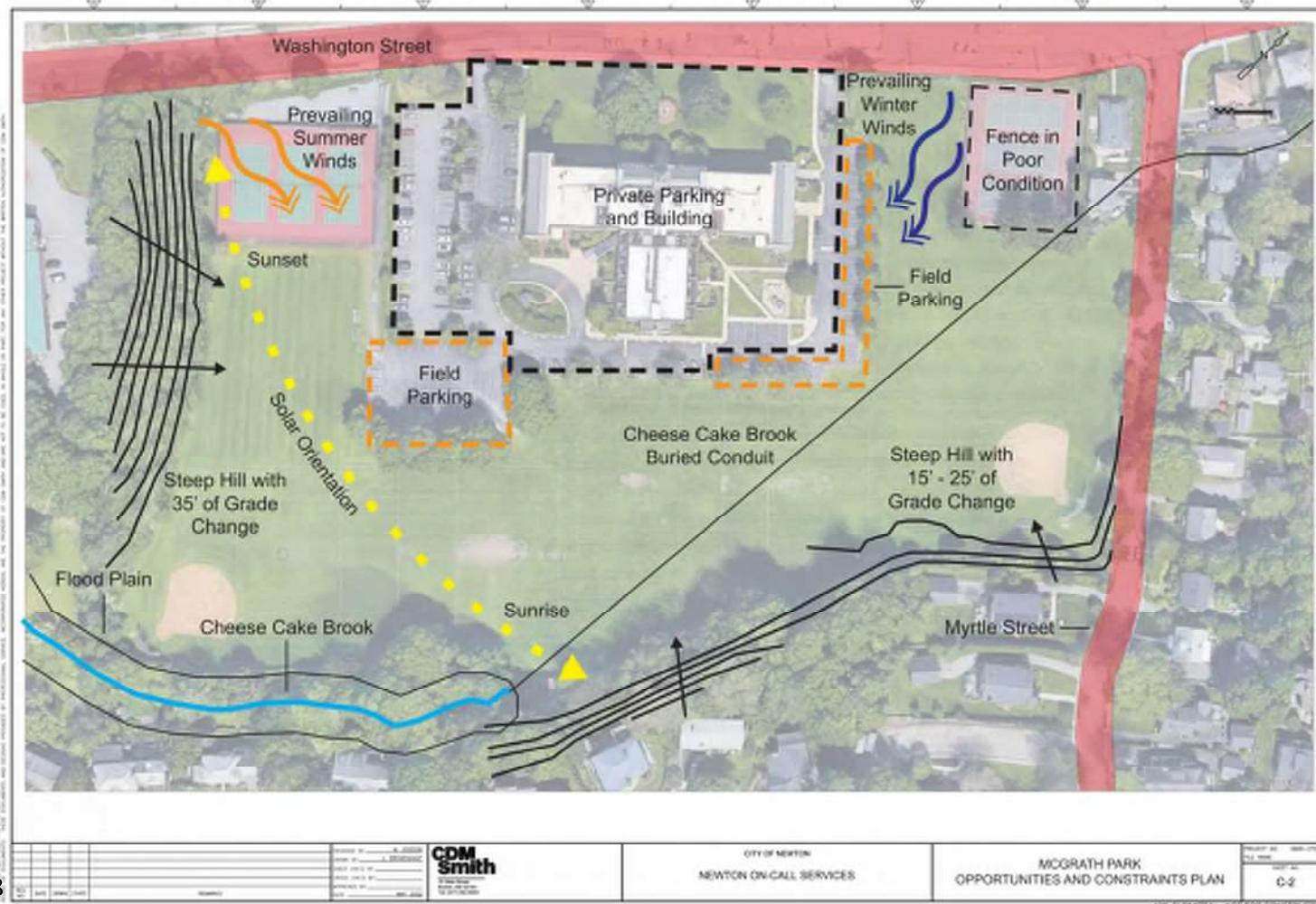
## Existing Conditions



## Existing Conditions



# Site Opportunities and Constraints



# McGrath Park Conceptual Site Plan



ALL INFORMATION IS UNCLASSIFIED EXCEPT WHERE SHOWN OTHERWISE. ALL INFORMATION IS UNCLASSIFIED EXCEPT WHERE SHOWN OTHERWISE. ALL INFORMATION IS UNCLASSIFIED EXCEPT WHERE SHOWN OTHERWISE.

PREPARED BY: DATE:	CHECKED BY: DATE:	<b>CDM Smith</b> CONSULTANTS	CITY OF NEWTON NEWTON ON-CALL SERVICES	MCCRATH PARK SITE PLAN	SHEET NO. 001-0000
					TOTAL SHEETS 001-0000
				C-2	

# Schedule

## Burr School



## McGrath Park



## Brown/Oak Hill School

