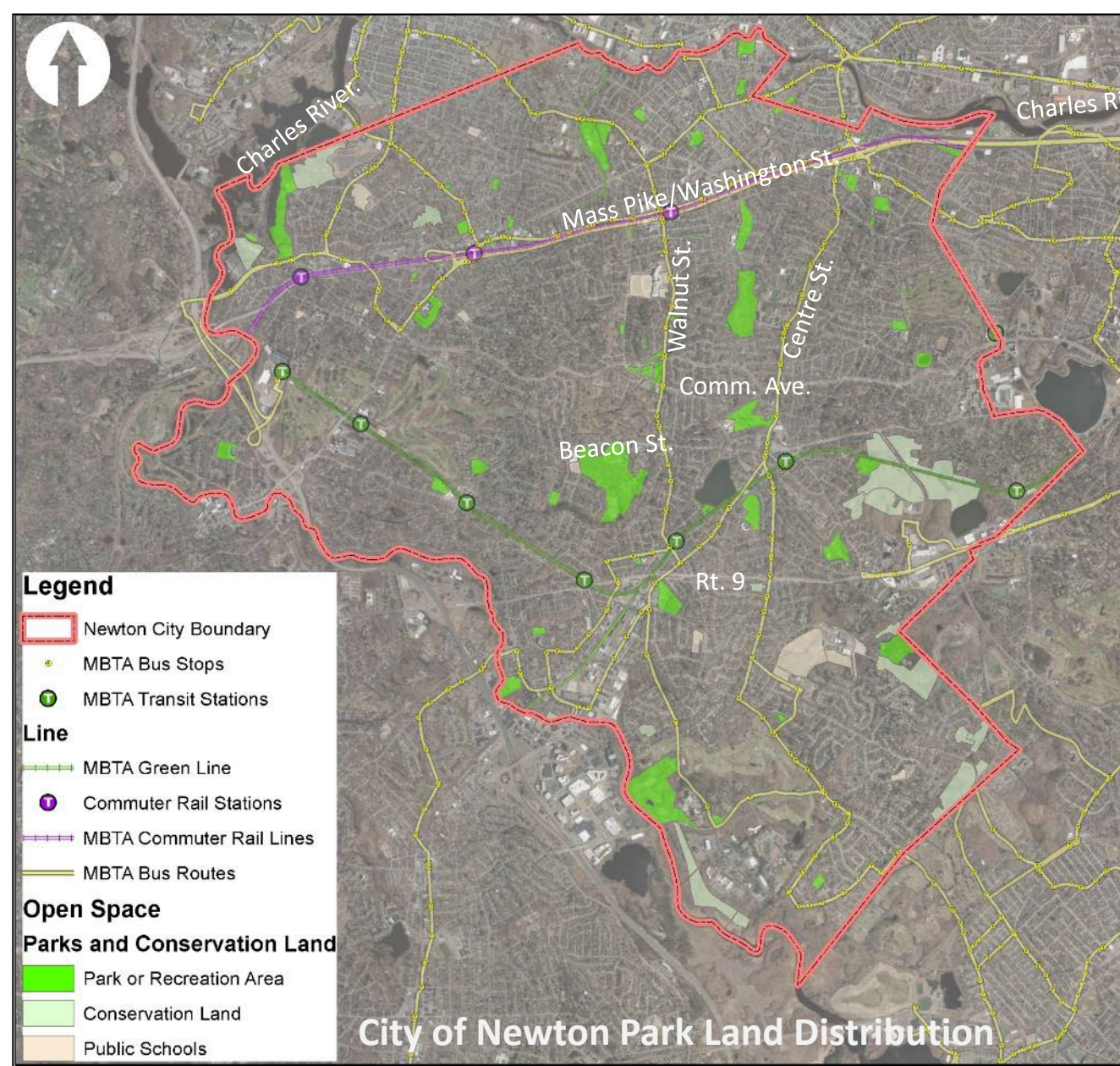




AGENDA

- 1 FIELD CAPITAL PROJECTS
- 2 FEES/BUDGET → IMPROVING FIELDS





PARKS, RECREATION & CULTURE OVERVIEW:

• Manage and oversee nearly 600 Acres of park land:

- Aquatic facilities
- Tracks + fields
- Trails, pathways + safe routes to schools
- Playgrounds + tot Lots
- Field houses + community centers
- Tennis/ basketball courts
- Passive areas
- Outdoor exercise equipment
- Wooded areas
- Outdoor challenge courses
- Dog parks
- Splash pad
- Historic significance
- Wetlands and waterways

Management Teams

PARKS AND OPEN SPACE

- Fields design/capital projects
- **Fields: Albemarle, Brown/Oak Hill, McGrath, Burr Elem., Forte, Braceland, 3 school Syn-turf carpets, and 3 light projects: NS, NN, Forte**
- Non-fields: Spears garden, NCP perf. stage, Cabot pav., new dog parks, M. S. Path, Lev. Cove, Left Beach, Gath Pool, H.M. playground, NN courts, NCP playground, U.F. splash pad, dozens of Friends/ adopt-a-space efforts, etc.
- Dozens of community meetings/updates

GROUNDS MAINTENANCE AND BEAUTIFICATION

- **Maintain Over 165+ locations (600+ acres)**
- 50+ irrigation systems
- 60+ ballfields
- 40+ basketball courts
- Miles of fencing (any City fence)
- 60+ playgrounds
- Manage 16+ contracts

BOLSTERED OUR MANAGEMENT OF PARKS AND OPEN SPACE PROJECTS

- **CREATED A NEW DIVISION DEDICATED TO PARKS + OPEN SPACE PROJECTS (FY22)**
 - *HIRED ADDITIONAL LANDSCAPE ARCHITECT!*
- **STRENGTHENED INPUT OF IN-HOUSE MAINT. AND TURF SPECIALISTS IN PROJECT REVIEW PROCESS**
- **HIRED DESIGN/ENGINEERING FIRMS TO ASSIST WITH PROJECTS (W&S, CDM SMITH)**
- **HIRED TURF MANAGEMENT CONSULTANT (TOM IRWIN ASSOCIATES) TO ADVISE ON FIELDS WORK**

Fields Capital Projects

FIELD CAPITAL IMPROVEMENT GOALS

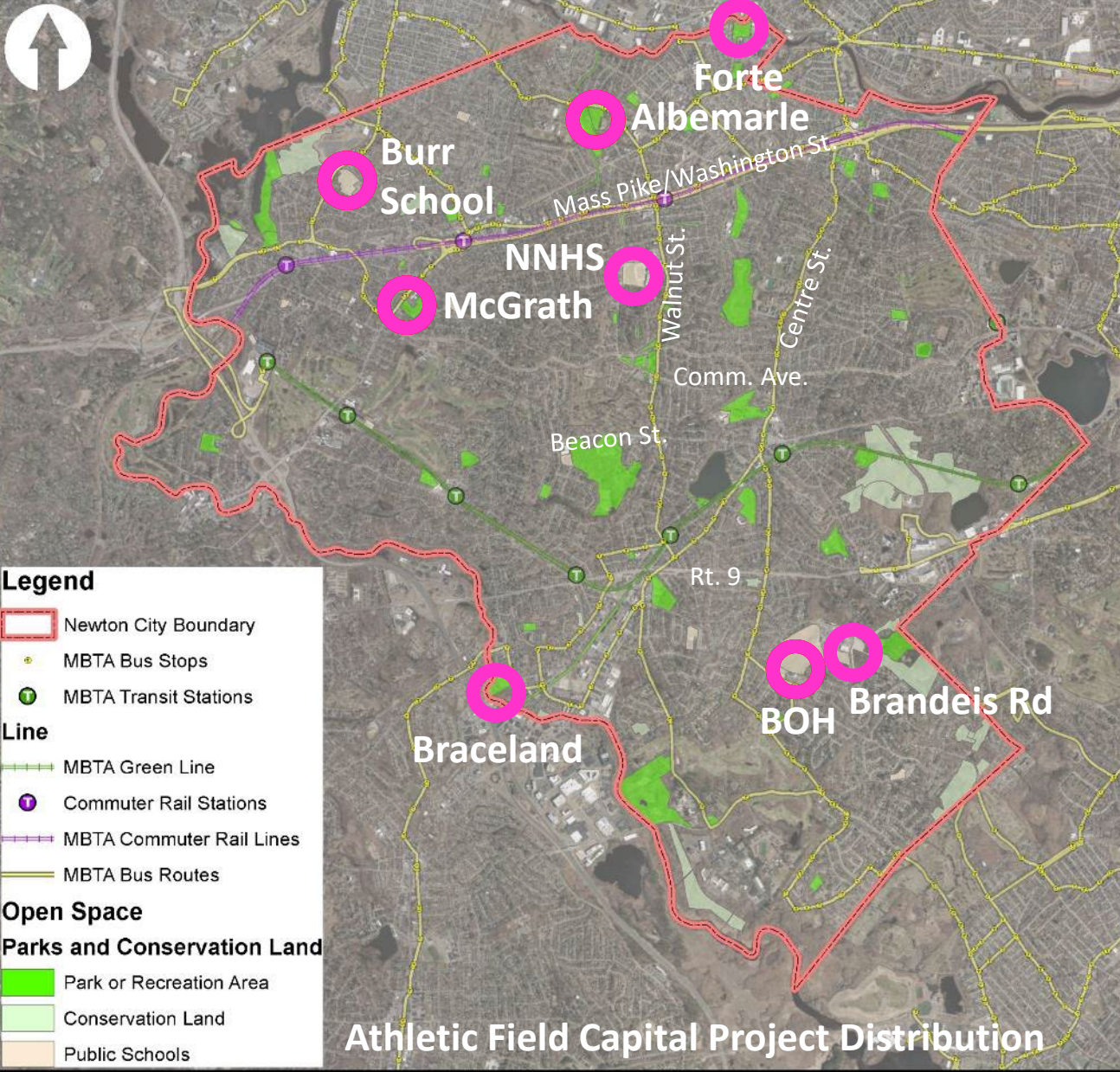
- IMPROVE QUANTITY AND QUALITY OF MULTIUSE FIELD SPACE
 - *INCREASE EVENING PLAY OPPORTUNITIES*
 - *REPLACE END-OF-LIFE SPORTS LIGHTING*
 - *IMPROVE QUALITY OF ATHLETIC FIELD SURFACES*
 - *INCREASE AVAILABLE REGULATION-SIZE ATHLETIC FIELDS*
- IMPROVE ACCESSIBILITY IN PARK AND FIELD AMENITIES
- ESTABLISH BETTER PARK CONSTRUCTION MANAGEMENT FOR IMPROVED OPERATION & MAINTENANCE POST-CONSTRUCTION
- INVEST EQUITABLY IN NEWTON'S ATHLETIC FIELDS + PARKS ACROSS THE CITY

CAPITAL PROJECT PRIORITIZATION

- POTENTIAL FOR GREATEST CITY-WIDE BENEFIT
- PROJECT SEQUENCING: PRIORITIZE MEANS TO EXPAND PLAY POTENTIAL (NEW FIELDS, LIGHT PROJECTS)
- EXPANDING EVENING PLAY (LIGHT IMPROVEMENTS/ ADDITIONS)
- USE AND CONDITIONS ASSESSMENT DATA
- SPATIAL CRITERIA FOR REGULATION MULTIUSE FIELDS (REDUCE FIELD OVERLAP)
- ACHIEVING GREATER EQUITY ACROSS REGIONS OF CITY
- INTEGRATED WITH OTHER PROJECTS IN A PARK AREA (E.G., PATH AT McGRATH, GATH POOL PROJECT, FEE ANALYSIS AND INCREASE, STAKEHOLDER FUNDRAISERS ETC.)
- STAKEHOLDER INPUT

5-YEAR STRATEGIC CAPITAL PLAN FOR FIELDS

- Albemarle Park
- Forte Park
- Burr School
- Brown/Oak Hill Fields
- McGrath Park
- Bobby Braceland
- Newton South Brandeis Rd. Field Lighting
- Newton North Tiger Stadium Lighting
- NSHS Synthetic Turf Replacement
- NNHS Synthetic Turf Replacement



Prelim project budget: \$5M

REVISED CONCEPT ALTERNATIVE 2

Existing to Remain -

- Murphy (Little League) - refreshed
- Roche (Little League) - refreshed and adjustments made to accommodate softball
- Cole (softball) - refreshed
- Multipurpose (MP) field on northern end - refreshed
- Multipurpose (MP) field and track south of Gath
- Concessions and batting cages at Murphy
- Southern end playgrounds
- Two oaks north of Murphy

Relocated -

- Burke (baseball) reoriented; outfield expanded
- Basketball court

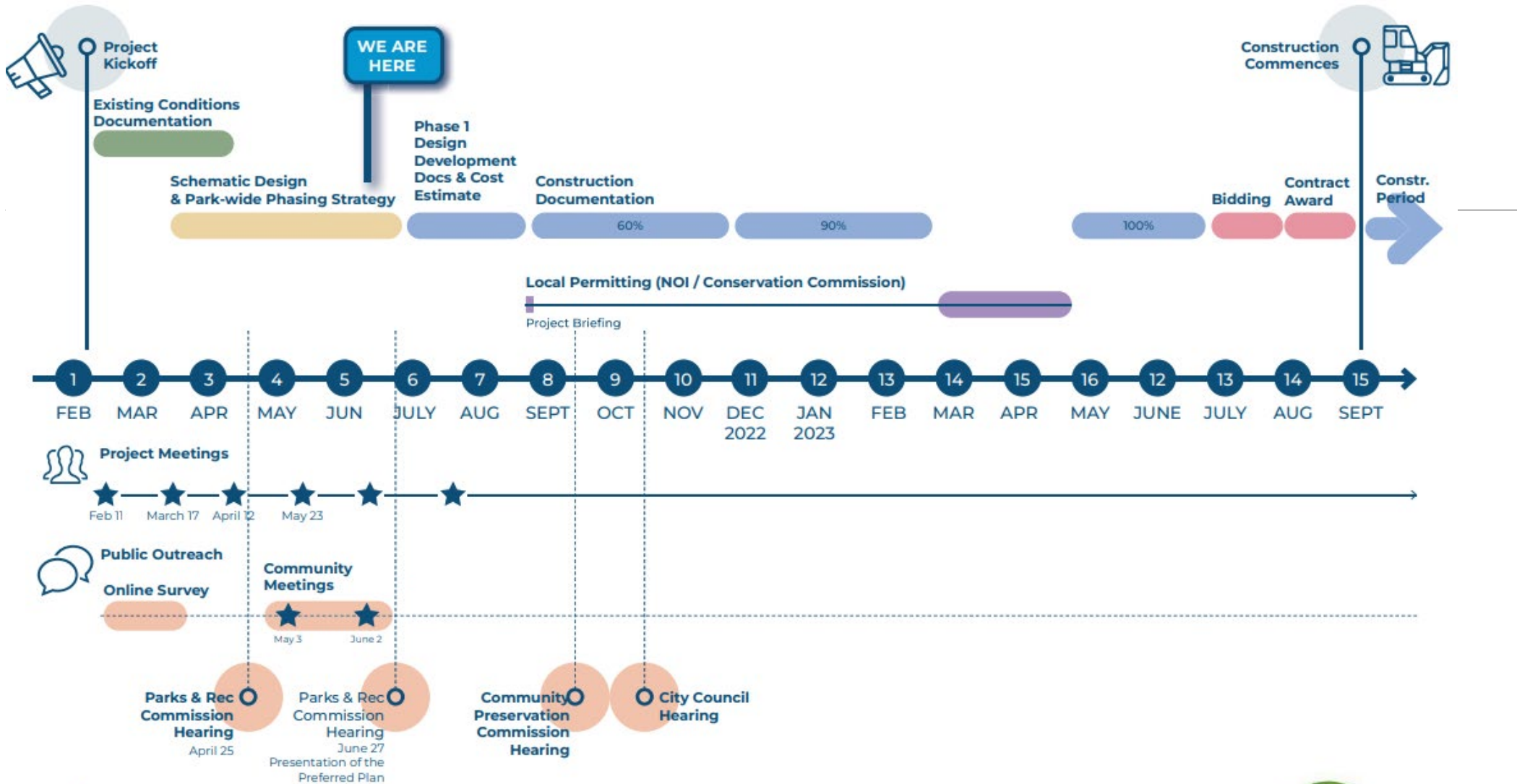
New -

- New MP field overlay (E/W)
- Six new pickleball courts
- Spray deck footprint
- Improved pathway circulation and accessible connections to batting cages, spectator seating, etc.
- Multiuse bike trail along eastern edge
- Bridge connection over Cheese Cake Brook to Fessenden (future project)
- New sports lighting (not shown)
- New irrigation

Removed -

- 3A field (softball)
- Two tennis courts





Note:
 The MVP stormwater grant conceptual design was awarded to the project by the CRWA

Burr Element

~\$500K



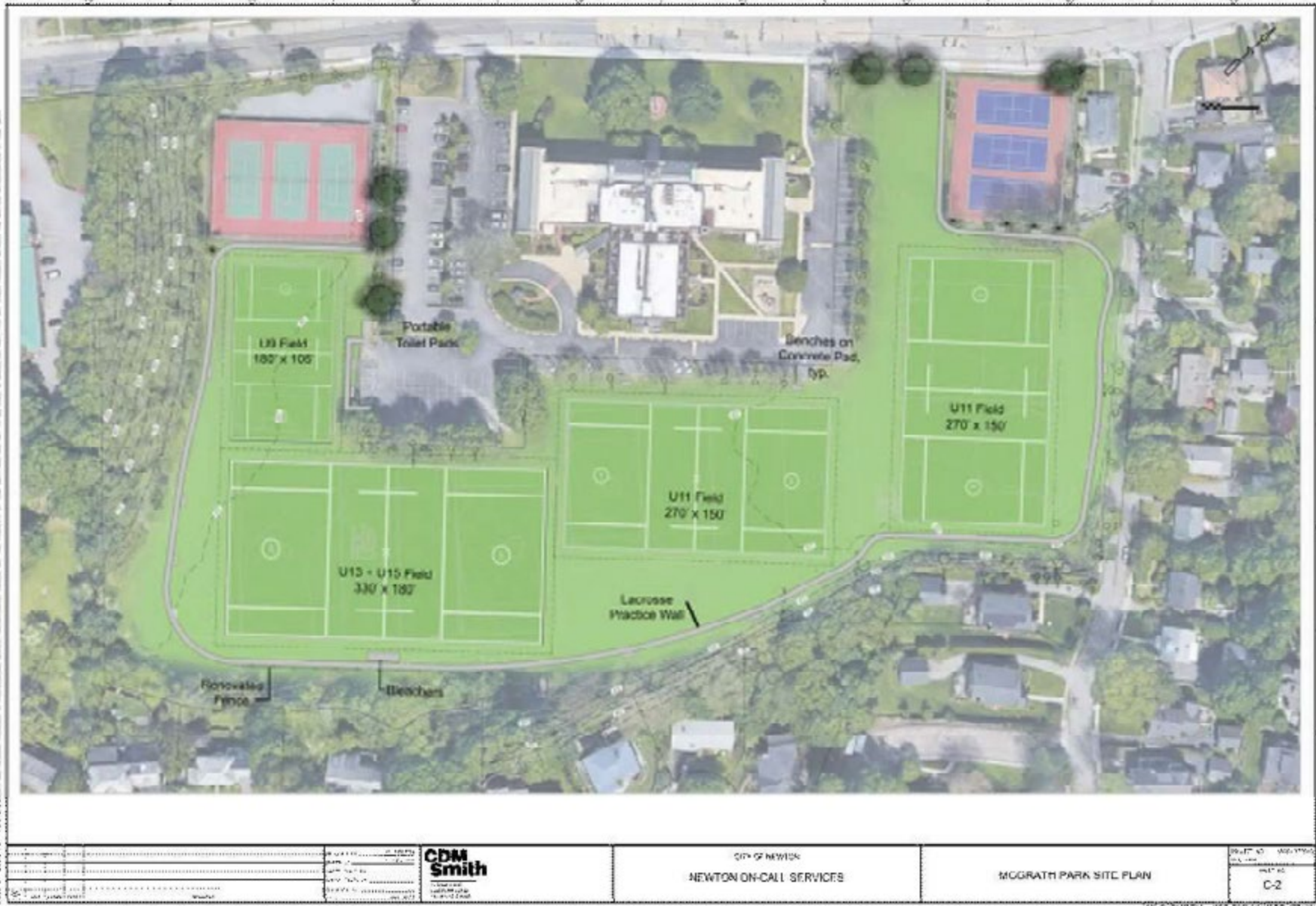
Burr Elem. Fields

Burr School



M
C
G
r
a
t
h

~\$500K



McGrath

McGrath Park



Brown/ Oak Hill

~\$500K



Brown/ Oak Hill

Brown/Oak Hill School



Light System Projects

NEW LED LIGHT SYSTEMS



Benefits

- Focused down lighting
- Energy efficient
- Remote controllable
- 25-year warranty

Field Light Systems

- Highlands
- All high school light systems
- Future: Albemarle, Forte, Pellegrini

Lights Are Important

School dismissal is later in the evening

New park space is incredibly expensive (2-acre min. plus parking) and not available

Maintenance: minor expense to operate vs. maintaining a field, environmental impacts are also minimal

Lighting synthetic turf fields: can handle unlimited use, including during rain events. No reschedules/makeups.

Lighting a field provides: **1,000+ additional hours** of playing time availability

Hours of added playing time each month (based sunset to 9:30pm)

Jan	Feb	Mar	Apr	May	Jun	Jul	Aug	Sep	Oct	Nov	Dec
195h 30m	135h 30m	88h	61h 30m	46h 30m	34h	37h 30m	53h 30m	78h 30m	108h	149h 30m	163h 30m

Field Fees and Field Maintenance

1. FIELD/TURF/LIGHT FEES

- Revised Fee schedule for all field user groups

2. MUNICIPAL FIELD MAINTENANCE BUDGET

3. INVESTING BACK INTO FIELDS

2022 Hourly Field/Light Use Fee Schedule

Tier	Groups	SynT	Grass	Lights
1	PRC, NPS Athletics	\$0	\$0	\$0
2	Newton-based Youth Sports Leagues	\$50	\$10/p	\$35*
3	Leagues and non-profits with minimum 65% residents And: PTOs, Newton-based Private Schools	\$100	\$30	\$35*
4	Leagues and non-profits with less than 65% Newton Residents	\$150	\$40	\$50
5	Private for-profit Camps and Clinics One-time Events/Tournaments	\$150	\$50	\$50

Tier-2 youth sports are groups that:

- Serve all Newton youth (no cuts)
- Are limited to Newton youth (and all who attend a school in Newton)
- Volunteer run organization with Newton resident board members

* Light fee reduction starting Fall '22

Fields Committee: Tier-2 Field Fees

Tier-2 Comps

- Neighboring communities survey
- 9 of the 14 communities surveyed charge a per participant fee for youth leagues; 3 communities charge youth leagues per hour.
- Lex, Brookline: \$15; Norwood: \$20; Wellesley: \$30; Sudbury: \$40

Tier-2 Projected Revenues

Year	2022	2023	2024
Fee	\$10	\$15	\$20
Revenue	\$95,540	\$143,310	\$191,080

Tier-2 fee schedule adopted per Fields Subcommittee recommendation

INCREASED MUNICIPAL INVESTMENT

- **QUADRUPLED TURF MAINTENANCE BUDGET ALLOCATION**

Public Grounds Maintenance Budget					
Maint. Budget Expense Item	General Description	Fiscal Year 2021	Fiscal Year 2023	Budget Increase in Dollars	Budget Increase Percentage
Turf Mowing	Mowing	\$ 575,000	\$ 700,000	\$ 125,000	22%
	Leaf removal				
	Mulching				
	Pruning				
Turf Management	Aerification	\$ 75,000	\$ 300,000	\$ 225,000	300%
	Fertilization				
	Slice seeding				
	Top dressing				
	Integrated Pest Management (IPM)				

Turf Management Practices (Grass Fields)

- Core aerification – generally two times in spring and fall; this type of aerification pulls a soil core
 - Reduces compaction
 - Allows for better water infiltration and gas exchange
 - Reduces thatch layer
- Slice seeding – generally we are seeding most locations three times per year (mid-April, mid-June, early September)
 - In spring and fall we seed with perennial ryegrass (tri-rye)
 - In June we seed with a bluegrass/perennial ryegrass mixture (80% blue/20% tri-rye)
- Fertilization – generally three to four times per year
 - Frequency depends on fertilizer analysis (number indicated for Nitrogen, Phosphorous and Potassium – N,P,K) and amount of nitrogen applied (per 1,000 sq ft)
 - We use seed starter fertilizer each time we seed
- Topdressing – generally one time per year in fall along with timing of core aerification
 - Sand fills in the aerification holes and helps level the surface over time
 - The sand allows for greater root growth and water infiltration
- Lime – generally one time per year in the fall; amount and type of lime based on soil test results
 - This reduces soil acidity
- Soil testing – generally one time per year
- Soil decompaction – sand injection
- IPM – Once in late spring to early summer
 - Weed preventer to eliminate clover to allow for grass to grow

fy	per acre range				locations maintained per fy	acres maintained per fy	avg per acre cost per fy	operating budget per fy	turf management per fy
	0-3K	3.1-5K	5.1-7K	7.1-10K					
fy19	8	0	0	0	8	22	\$ 1,552.84	\$ 35,000.00	\$ 33,852.00
	100%	0%	0%	0%					
fy20	11	2	0	0	13	30	\$ 2,227.77	\$ 75,000.00	\$ 67,390.00
	85%	15%	0%	0%					
fy21	12	2	0	0	14	40	\$ 1,471.04	\$ 75,000.00	\$ 57,738.13
	86%	14%	0%	0%					
fy22	4	2	8	2	16	54	\$ 5,529.32	\$ 281,674.83	\$ 295,818.75
	25%	13%	50%	13%					
fy23	0	3	15	0	18	59	\$ 6,383.20	\$ 300,000.00	\$ 375,013.25
	0%	17%	83%	0%					

Investing in our Fields

- High End Varsity 450 - 500 Hours per year \$7-10K per acre
- Standard Varsity/Munic. 350 - 400 Hours per year \$5-8K per acre
- Low Maint./Municipal 250 - 300 Hours per year \$3-5K per acre

Credit: Tom Irwin Assoc.

Investing in our Fields (FY19)

	site total	site acreage	per acre cost
albemarle	\$ -	0	\$ -
bowen	\$ 1,817.00	2.3	\$ 790.00
burr park	\$ -	0	\$ -
cabot	\$ -	0	\$ -
forte park	\$ 3,280.00	2	\$ 1,640.00
lincoln warren	\$ -	0	\$ -
lower falls cc	\$ -	0	\$ -
nahanton park	\$ 3,280.00	2	\$ 1,640.00
new cold springs	\$ 3,280.00	2	\$ 1,640.00
newton highlands	\$ 4,675.00	5.5	\$ 850.00
nnhs	\$ 4,380.00	2	\$ 2,190.00
nshs	\$ 4,380.00	2	\$ 2,190.00
oak hill	\$ 8,760.00	4	\$ 2,190.00
warren house	\$ -	0	\$ -
weeks field	\$ -	0	\$ -
	\$ 33,852.00	21.8	\$ 1,552.84

Turf management only (no mowing or irrigation cost included)

Investing in our Fields (FY22)

	site total	site acreage	per acre cost
albemarle	\$ 34,595.75	6	\$ 5,765.96
bowen	\$ 9,142.00	3	\$ 3,047.33
burr park	\$ 8,859.75	1.5	\$ 5,906.50
cabot	\$ 8,121.25	1	\$ 8,121.25
forte park	\$ 14,378.00	2	\$ 7,189.00
franklin school	\$ 676.50	1.5	\$ 451.00
lincoln warren	\$ 11,590.75	2.5	\$ 4,636.30
lower falls cc	\$ 5,386.75	2.5	\$ 2,154.70
nahanton park	\$ 10,128.00	2	\$ 5,064.00
new cold springs	\$ 19,707.00	3	\$ 6,569.00
newton highlands	\$ 17,497.75	2.5	\$ 6,999.10
nnhs	\$ 24,954.50	4	\$ 6,238.63
nshs	\$ 21,315.25	4	\$ 5,328.81
oak hill	\$ 57,481.75	6.5	\$ 8,843.35
warren house	\$ 38,846.75	5.5	\$ 7,063.05
weeks field	\$ 13,137.00	6	\$ 2,189.50
	\$ 295,818.75	53.5	\$ 5,529.32

Turf management only (no mowing or irrigation cost included)

Investing in our Fields (FY23)

	site total	site acreage	per acre cost
albemarle	\$ 43,677.75	7.25	\$ 6,024.52
bowen	\$ 17,376.00	3	\$ 5,792.00
burr park	\$ 10,375.50	1.5	\$ 6,917.00
cabot	\$ 10,323.50	1.75	\$ 5,899.14
forte park	\$ 14,234.00	2	\$ 7,117.00
lincoln warren	\$ 18,742.50	2.5	\$ 7,497.00
lower falls cc	\$ 13,305.00	2.5	\$ 5,322.00
lyons field	\$ 3,706.50	0.75	\$ 4,942.00
nahanton park	\$ 10,644.00	2	\$ 5,322.00
ncp - jay gordon	\$ 3,706.50	0.75	\$ 4,942.00
new cold springs	\$ 20,751.00	3	\$ 6,917.00
newton highlands	\$ 18,890.50	2.75	\$ 6,869.27
nnhs	\$ 28,468.00	4	\$ 7,117.00
nshs	\$ 28,468.00	4	\$ 7,117.00
oak hill	\$ 43,086.00	8	\$ 5,385.75
richardson	\$ 7,413.00	1.5	\$ 4,942.00
warren house	\$ 39,143.50	5.5	\$ 7,117.00
weeks field	\$ 42,702.00	6	\$ 7,117.00
	\$ 375,013.25	58.75	\$ 6,383.20

Turf management only (no mowing or irrigation cost included)

fy	per acre range				locations maintained per fy	acres maintained per fy	avg per acre cost per fy	operating budget per fy	turf management per fy
	0-3K	3.1-5K	5.1-7K	7.1-10K					
fy19	8	0	0	0	8	22	\$ 1,552.84	\$ 35,000.00	\$ 33,852.00
	100%	0%	0%	0%					
fy20	11	2	0	0	13	30	\$ 2,227.77	\$ 75,000.00	\$ 67,390.00
	85%	15%	0%	0%					
fy21	12	2	0	0	14	40	\$ 1,471.04	\$ 75,000.00	\$ 57,738.13
	86%	14%	0%	0%					
fy22	4	2	8	2	16	54	\$ 5,529.32	\$ 281,674.83	\$ 295,818.75
	25%	13%	50%	13%					
fy23	0	3	15	0	18	59	\$ 6,383.20	\$ 300,000.00	\$ 375,013.25
	0%	17%	83%	0%					

Investing in our Fields

- High End Varsity 450 - 500 Hours per year \$7-10K per acre
- Standard Varsity/Munic. 350 - 400 Hours per year \$5-8K per acre
- Low Maint./Municipal 250 - 300 Hours per year \$3-5K per acre

Credit: Tom Irwin Assoc.

As Fees and City Investments Increase:

- Greater investment in fields; bring more up to green investment level (\$5-7K/acre range)
- Bring more playing fields into program (e.g., Countryside, Franklin, Horace Mann, Zervas)
- Invest in newly expanded playing areas (e.g., Burr Elem., Lincoln-Elliot, McGrath)
- Purchase equipment to increase work efficiencies (e.g., drone field liner)
- Additional funding source for emergencies (e.g., irrigation repairs in June)
- Continued service level with inflation.

Field Assessments

- Ongoing field assessments with Turf Consultants
- Closures due to weather/ turf conditions
- Ongoing maintenance, these are not one-time expenditures
- Reposition goals where/when possible, to reduce excessive wear
- Monitoring field booking activity and putting capacity limits in place as necessary

Newton Athletic Fields Foundation

PETITION: 12/12/2020 (SUBMITTED 18 MONTHS AGO)

Newton needs a multi-year athletic fields improvement program to:

- ✓ Rehabilitate fields in disrepair
- Construct synthetic turf fields
- ✓ Increase maintenance to support usage levels
- ✓ Configure and allocate fields based on demand (not history)
- ✓ Install additional field lighting

We seek a formal commitment from the Mayor's office, City Council and Parks, Recreation & Culture (PR&C) department to:

- ✓ Allocate capital and operating funds
- ✓ Commit to a multi-year plan (dates, deliverables, budget, resources)
- ✓ Charge market-rate rental fees and direct them to field maintenance
- ✓ Commit Community Preservation Act (CPA) funds annually
- ✓ Dedicate the required resources to both deliver improvements and maintain existing fields