



# GATH POOL PROJECT

**City of Newton**  
**Parks + Recreation Commission**  
June 27, 2022

Project email: [gathpool@newtonma.gov](mailto:gathpool@newtonma.gov)

# POOL PROJECT GOALS AND OBJECTIVES

- Maintain and Activate More Green Space Around the Pool
- Improve Entry and Arrival Sequence
- Improve Experience for User Groups, Including Recreational and Competitive Swim
- Universal Access To Facility and All Pools
- Provide Leisure and Play Areas for Pool Patrons
- Create Flexible Pool Spaces For Simultaneous use by Different User Groups
- Improve Operating Productivity by Eliminating Water Loss and Increasing Energy Efficiency
- Evaluate Bathhouse to Improve Overall Guest Experience
- Address Code, Accessibility, and Interior Upgrades
- Provide Improved Opportunities for Shade Structures and Sunbathing Areas

# PREVIOUS COMMUNITY AND FOCUS GROUP MEETINGS TO DATE

- Community meeting 1 - September 23<sup>rd</sup>, 2021
- Community Meeting 2 - October 28<sup>th</sup>, 2021
- Community Meeting 3 - December 2<sup>nd</sup>, 2021
- Conservation Commission Project Update - January 6<sup>th</sup>, 2022
- Community Meeting 4 - January 25<sup>th</sup>, 2022
- Commission on Disabilities Project Update - March 14<sup>th</sup>, 2022
- Parks + Recreation Commission Project Update
  - February 28<sup>th</sup>, 2022
  - March 21<sup>st</sup>, 2022
  - April 25<sup>th</sup>, 2022
  - June 27<sup>th</sup>, 2022
- Design Review Committee - April 13<sup>th</sup>, 2022
- Community Meeting 5 - May 3<sup>rd</sup>, 2022
- Community Preservation Committee - April 14<sup>th</sup>, 2022

- Friends of Albemarle:
  - January 21<sup>st</sup>, 2022
  - April 1<sup>st</sup>, 2022
  - April 29<sup>th</sup>, 2022
  - On-Going
- Newton Bluefish:
  - February 28<sup>th</sup>, 2022
  - April 26<sup>th</sup>, 2022
- LGBTQ+:
  - February 28<sup>th</sup>, 2022
- 55+ Recreation Group
  - February 28<sup>th</sup>, 2022
- Disability Community:
  - March 7<sup>th</sup>, 2022

# MEETING UPDATES

Update on Project activity since we last presented to you

- **Feasibility Study to Extend year-round swimming:**
  - *Mayor Fuller has added this to the CIP*
- ***Presented before Conservation Commission, Commission on Disability, and Design Review Committee:***
  - *Positive reception, enthusiasm to see pool being improved*
- ***Joint meetings with Albemarle design team***
- ***Project team looking at – traffic, parking, sustainability including storm water storage, accessibility, conservation, school and athletic needs***



# BATHHOUSE AND POOL FOCUS GROUP FEEDBACK

- Restrooms:
  - Grab bars need to be clearly and carefully laid out
  - Doors on shower stalls – No curtains
- Wheelchair:
  - Available for use from changing room to pool
  - Rolls and maneuvers easily
  - Safety belt
  - Can get wet
- Changing room:
  - Adjustable bench/table
  - Pool-ready wheelchair available for use
- Pool Lift:
  - Ready for independent use
  - Ease of use by single person
  - Proper staff training
  - Readily available equipment w/o locks or other barriers (batteries and other ancillary equipment)
- Storage:
  - For pool wheelchairs on site
  - For guest personal chairs and other equipment
- Splash pad:
  - Waterproof chair for use in the splash pad (Electric/Non-electric)
  - Direct ramps that lead directly to the splash pad – no turns
- Water Slide:
  - Provide options for people with disabilities
  - Place on Community Pool side
- Connected/separate pools:
  - Prefer multiple means of accessible entry for all swim areas. Makes connector advantageous (1 lift, 1 ramp) with easier transfer between pools



# POOL IN A PARK







**EXISTING SITE**



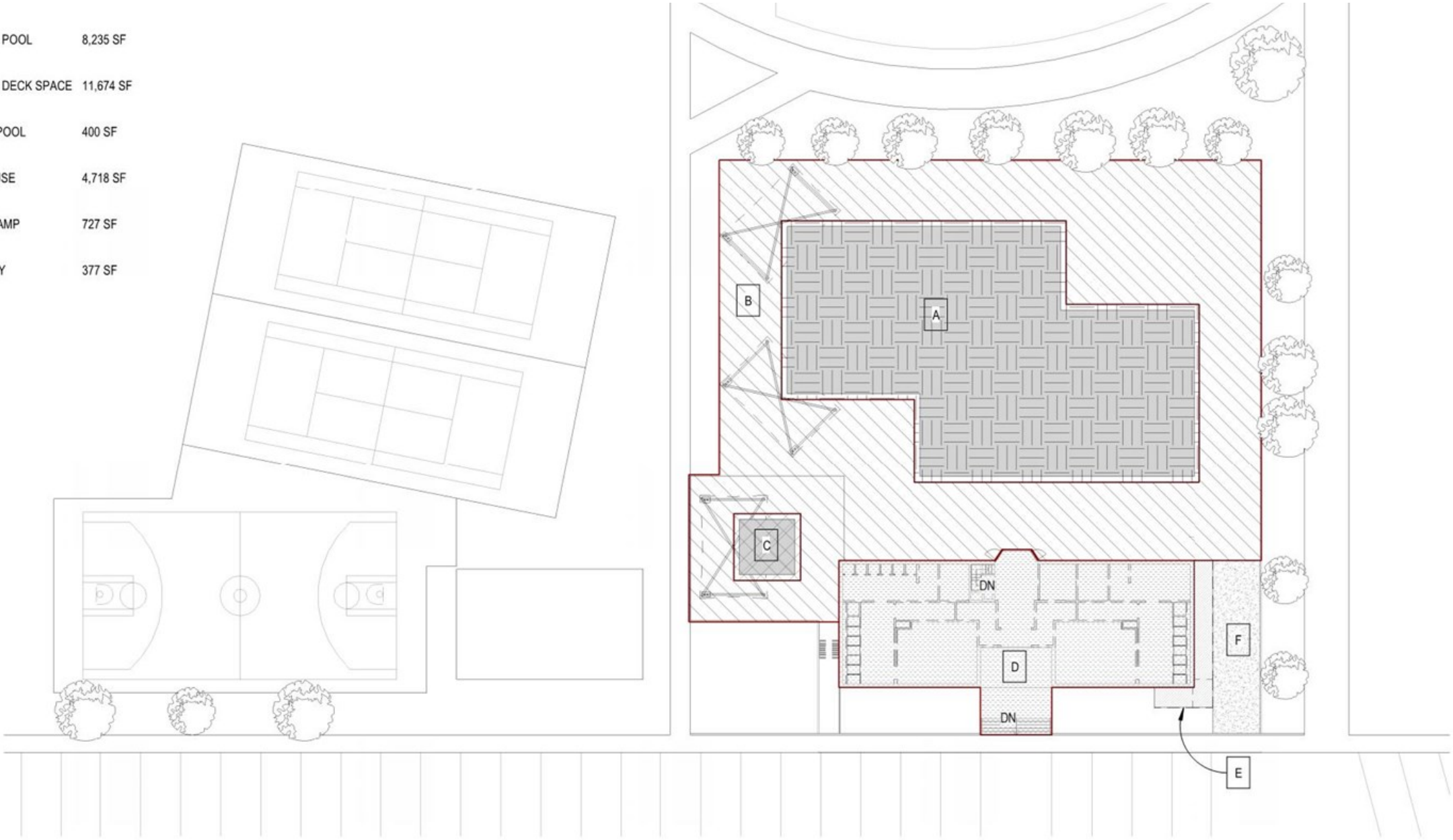


**EXISTING SITE**



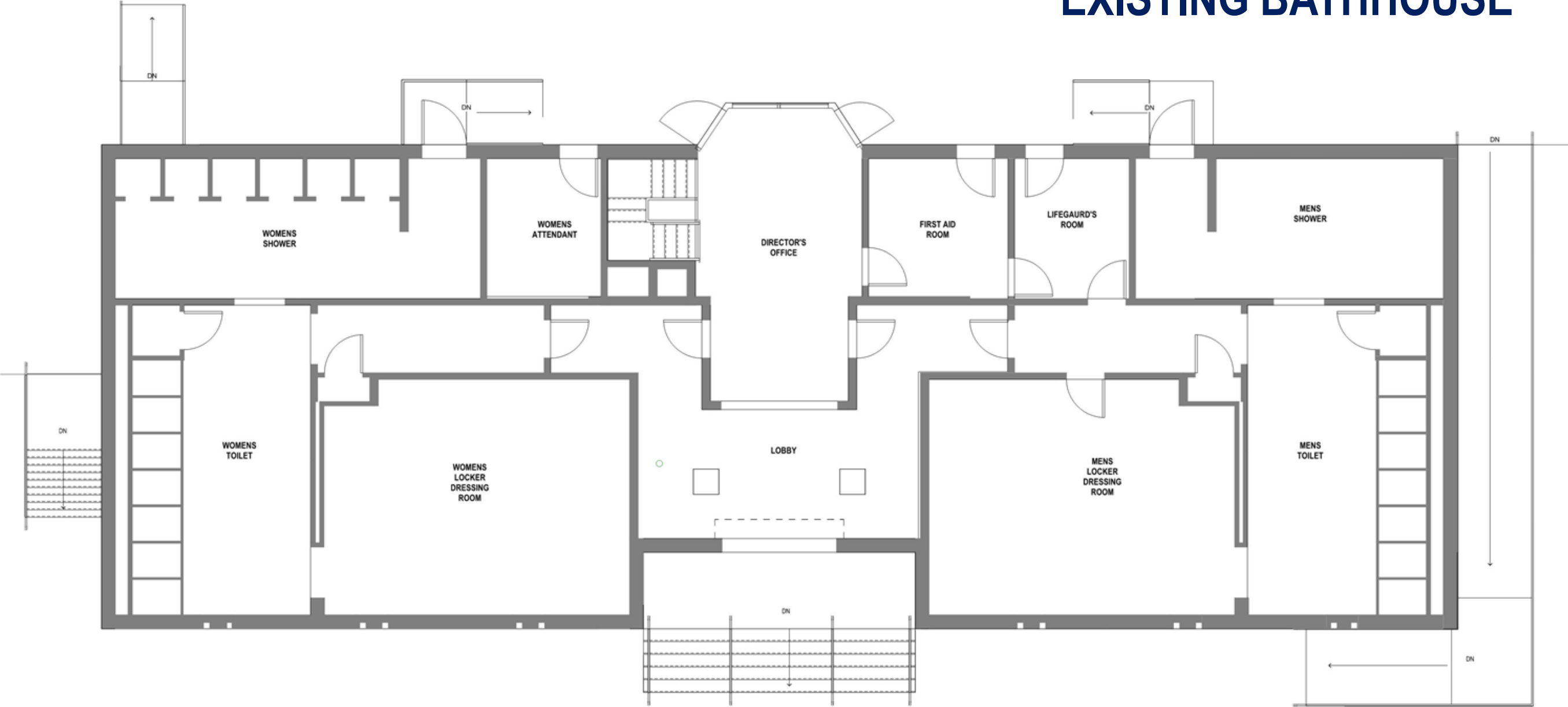
# EXISTING AREAS

- A  EXISTING POOL 8,235 SF
- B  EXISTING DECK SPACE 11,674 SF
- C  WADING POOL 400 SF
- D  BATHHOUSE 4,718 SF
- E  FRONT RAMP 727 SF
- F  DRIVEWAY 377 SF



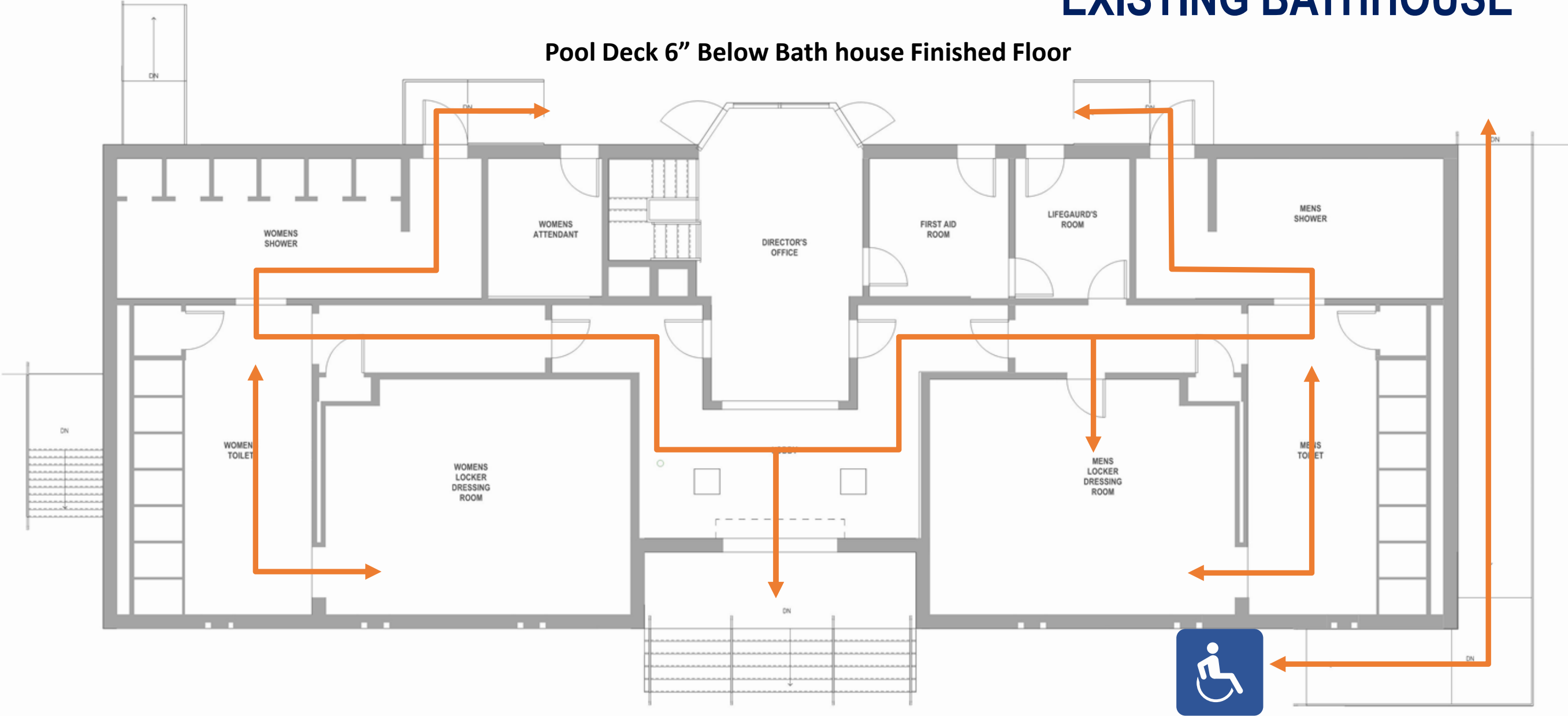
ALBEMARLE ROAD

# EXISTING BATHHOUSE

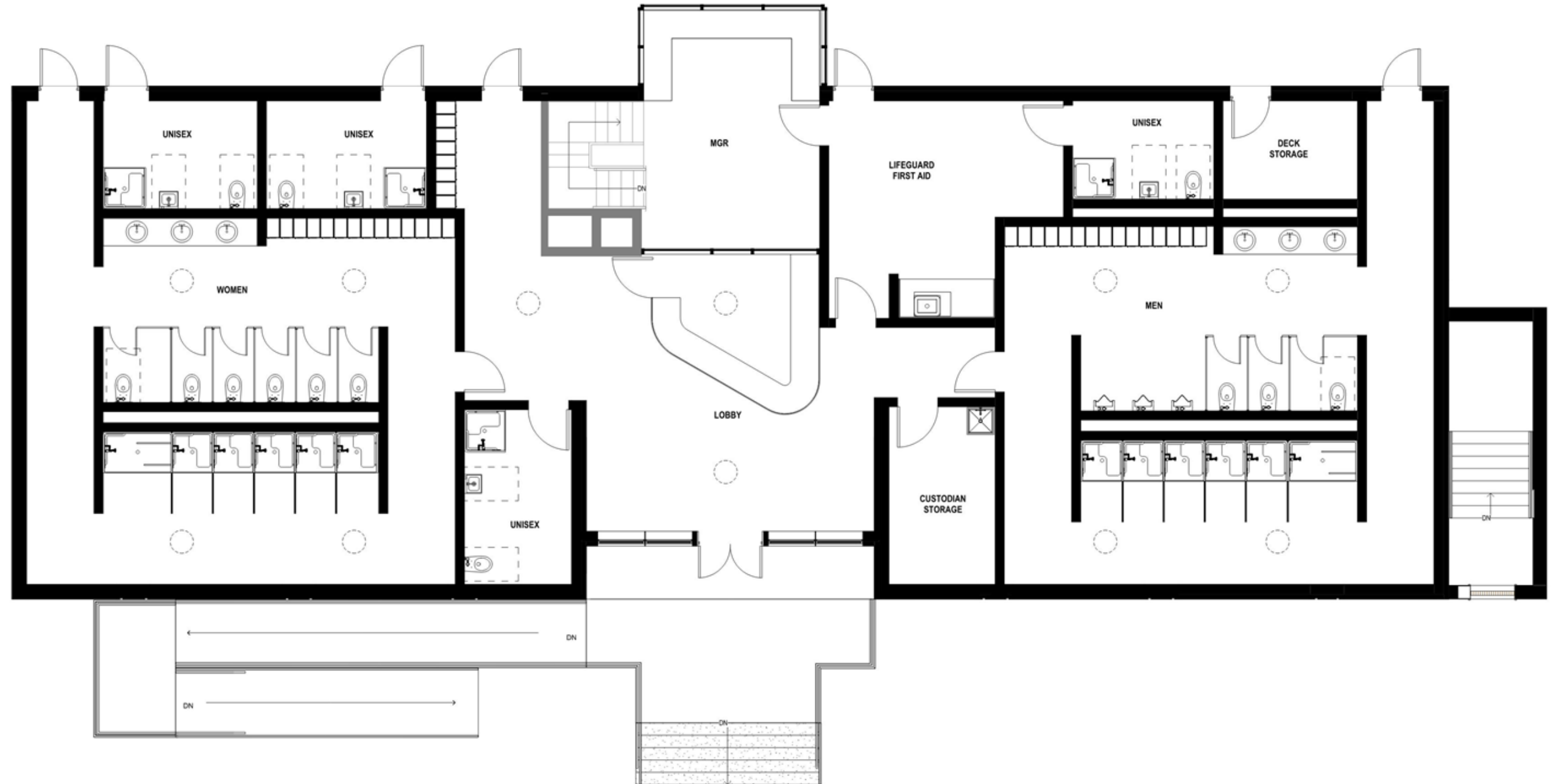


# EXISTING BATHHOUSE

Pool Deck 6" Below Bath house Finished Floor



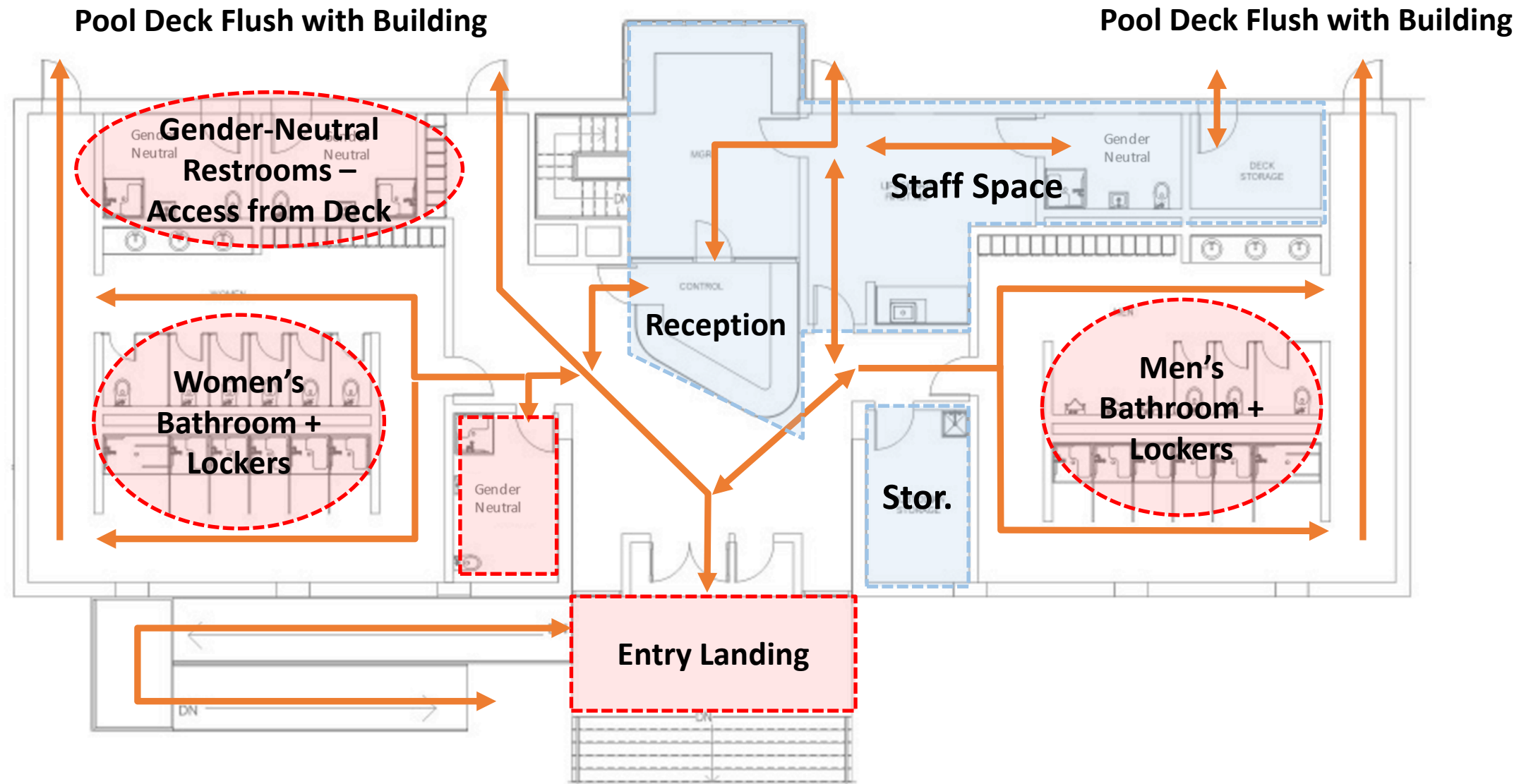
# BATH HOUSE



ALBEMARLE ROAD



# BATHHOUSE IMPROVEMENTS - PROGRAM AND CIRCULATION



# BATHHOUSE



Public Use Lockers



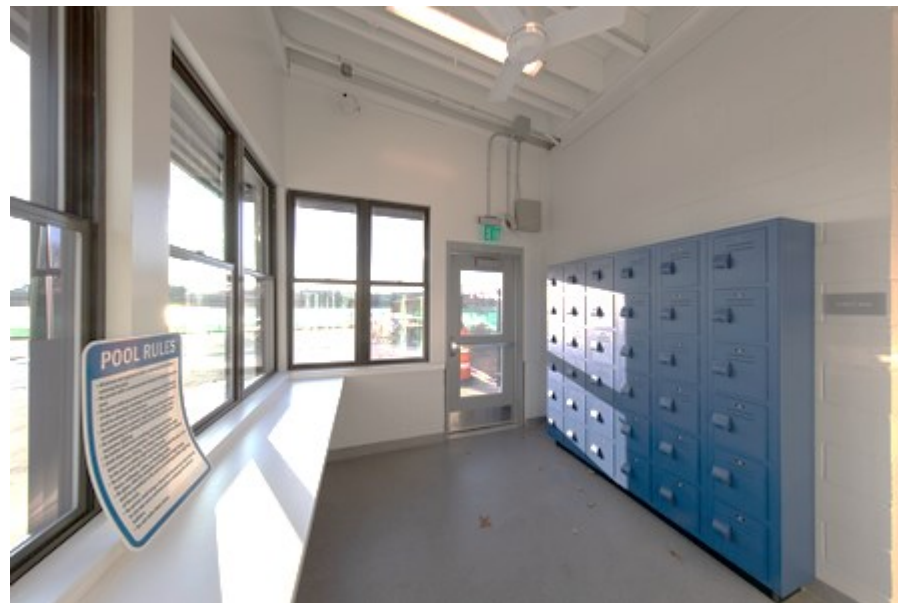
Shower/Changing Stalls



Changing Tables



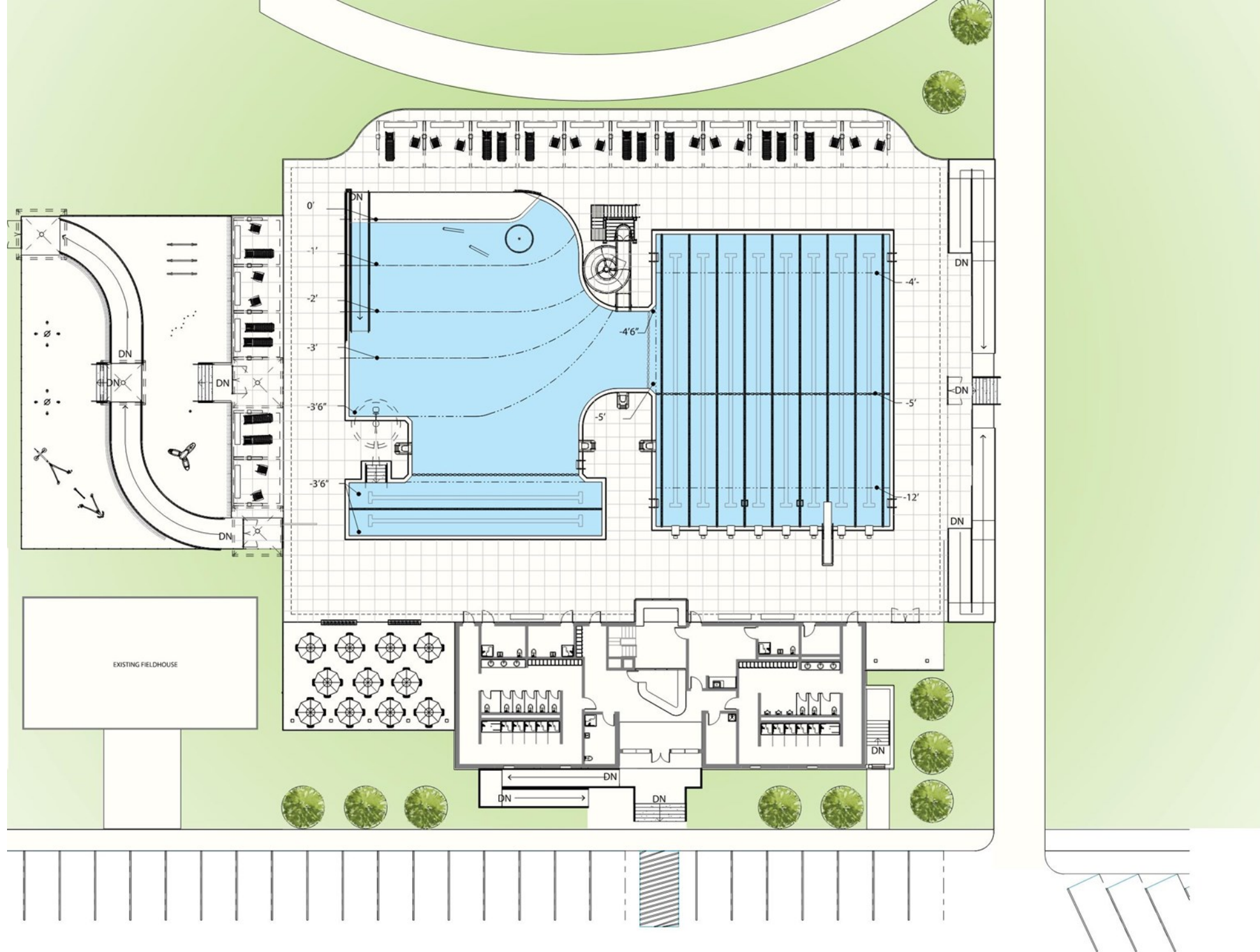
Daylighting/Durable Finishes



Efficient Staff, Lifeguard and First Aid Space



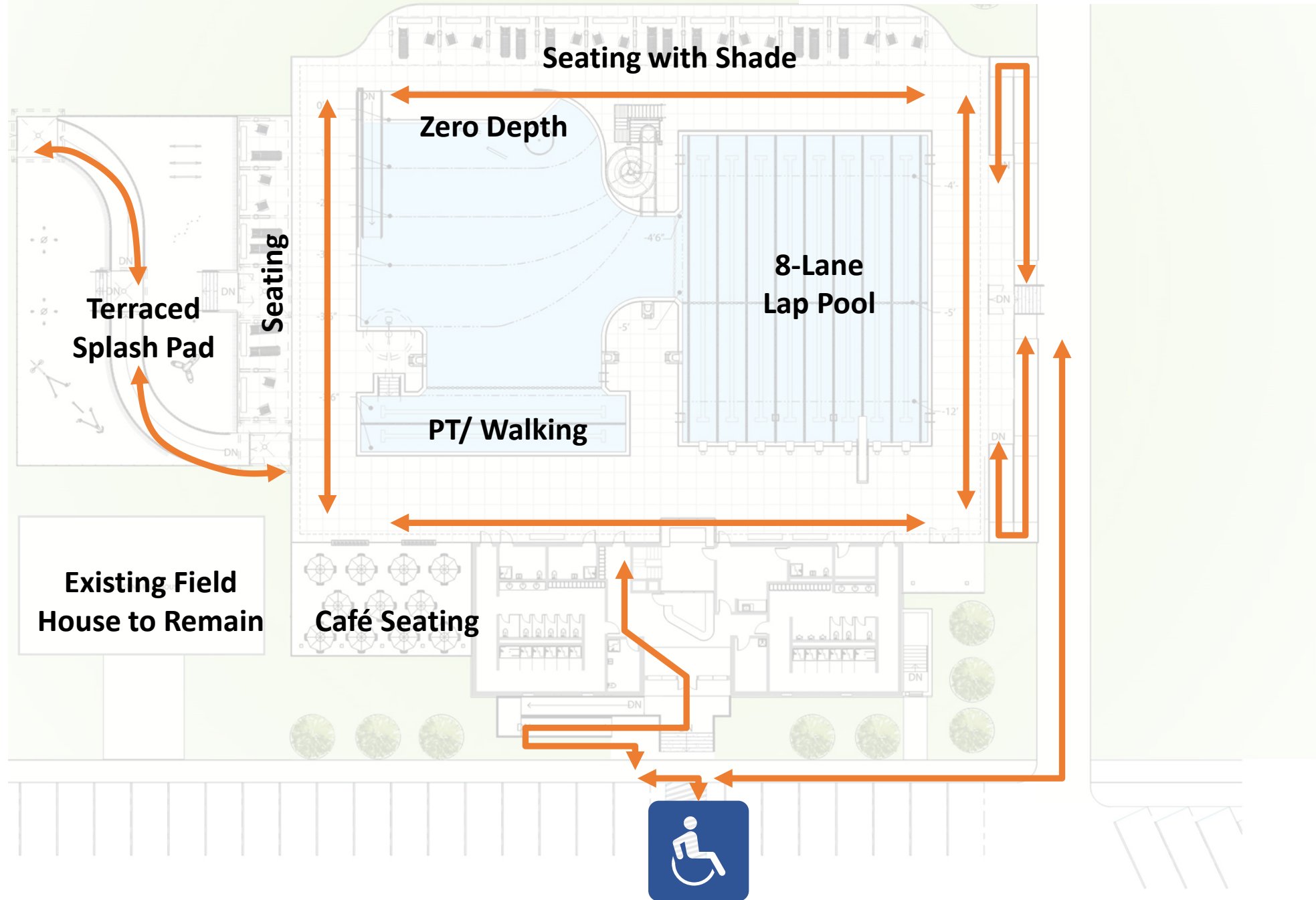
Waterproof Wheelchair



**PREFERRED PLAN**



# PROGRAM + CIRCULATION





# POOL



Zero Entry



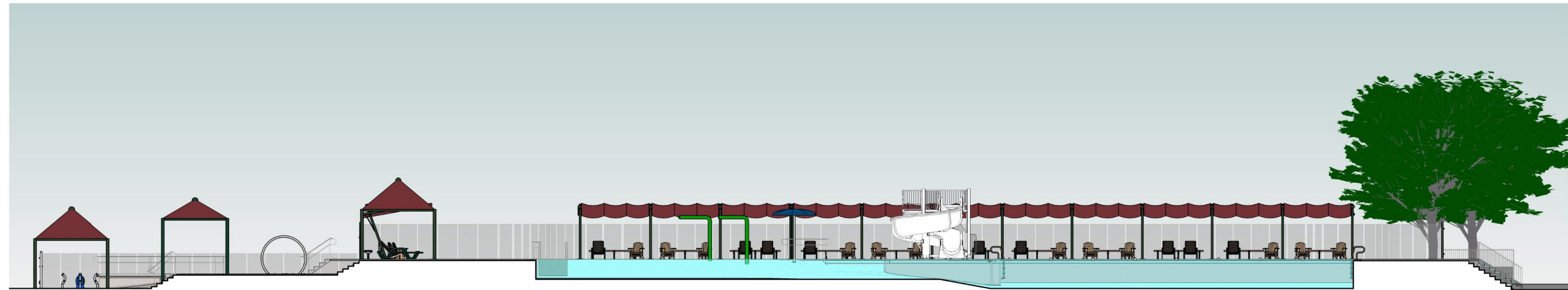
Accessible Ramp into Pool



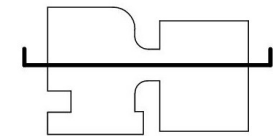
Permanent Pool Lift



# SECTION

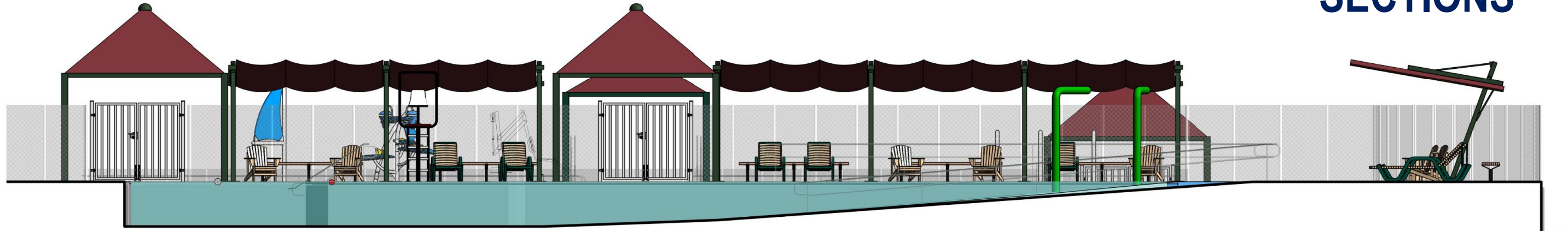


OVERALL SITE SECTION

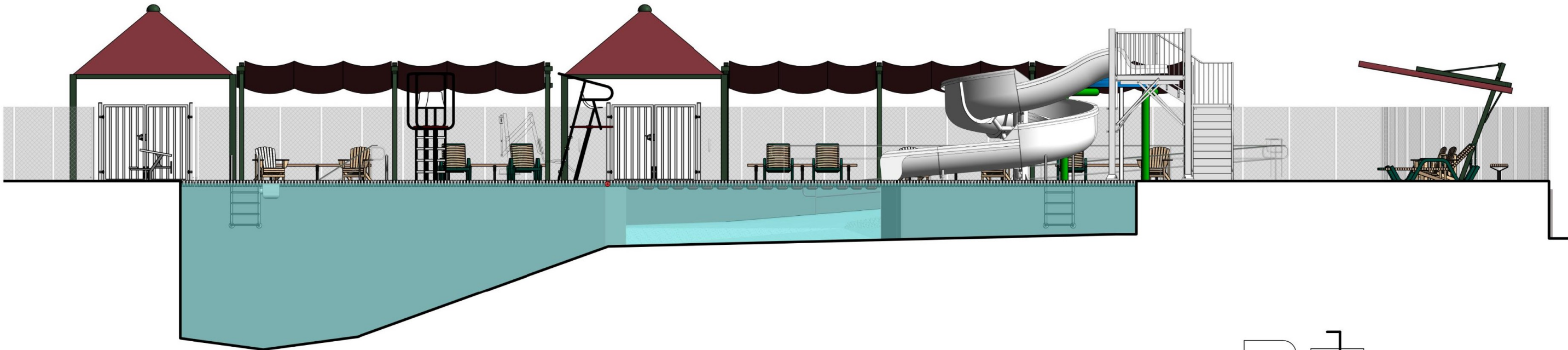
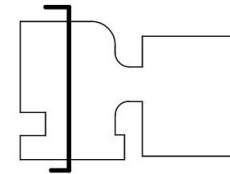


0 4' 8' 16'

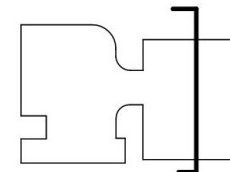
# SECTIONS



ENLARGED SECTION - ZERO DEPTH ENTRY

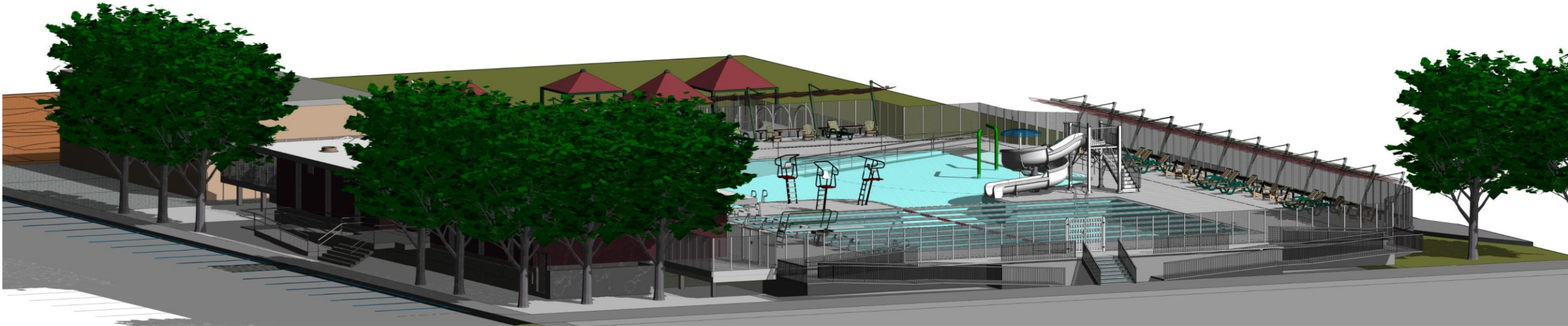


ENLARGED SECTION - LAP LANES





# AXONOMETRIC VIEW



SOUTH WEST VIEW



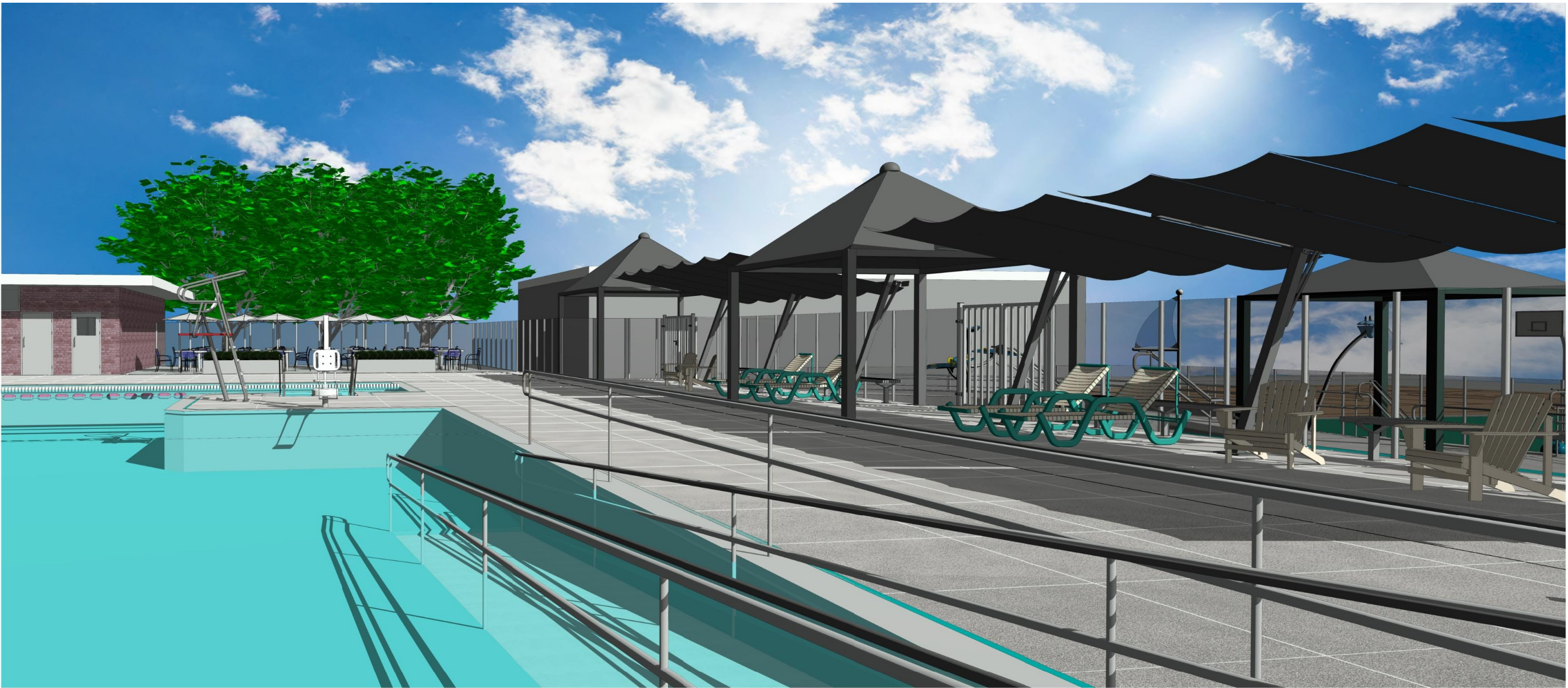
NORTH EAST VIEW





SPRAY DECK LOOKING SOUTH





ZERO DEPTH ENTRY

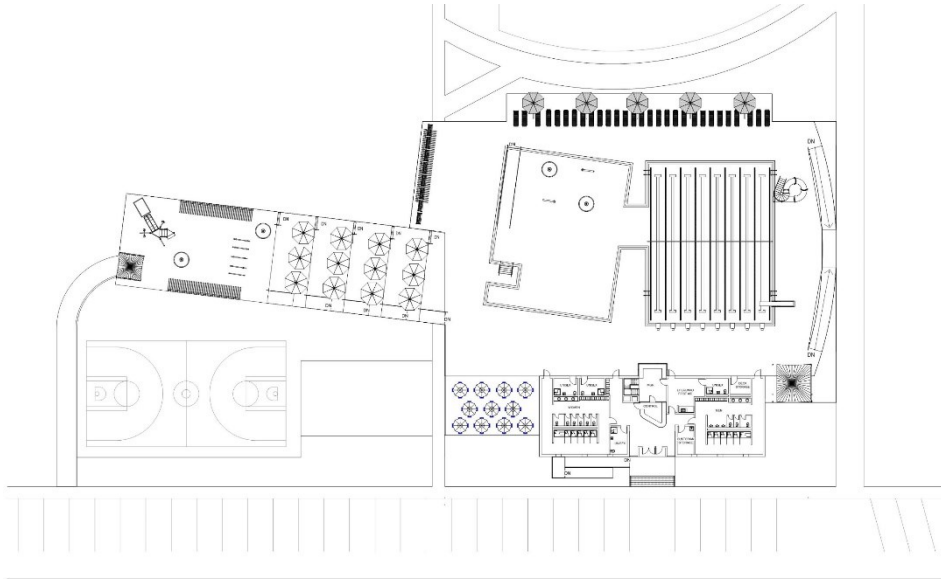




VIEW LOOKING NORTH AT LAP LANES

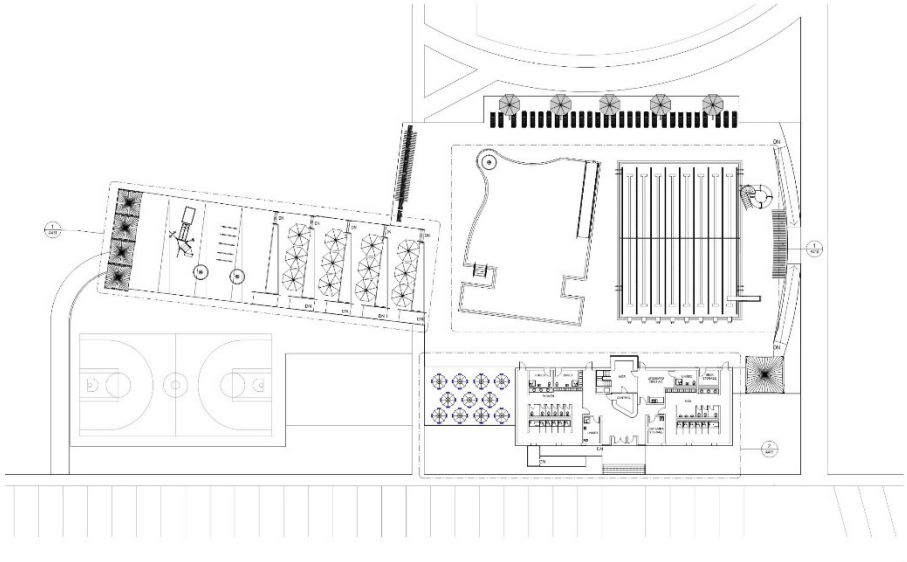


# PREVIOUS OPTIONS



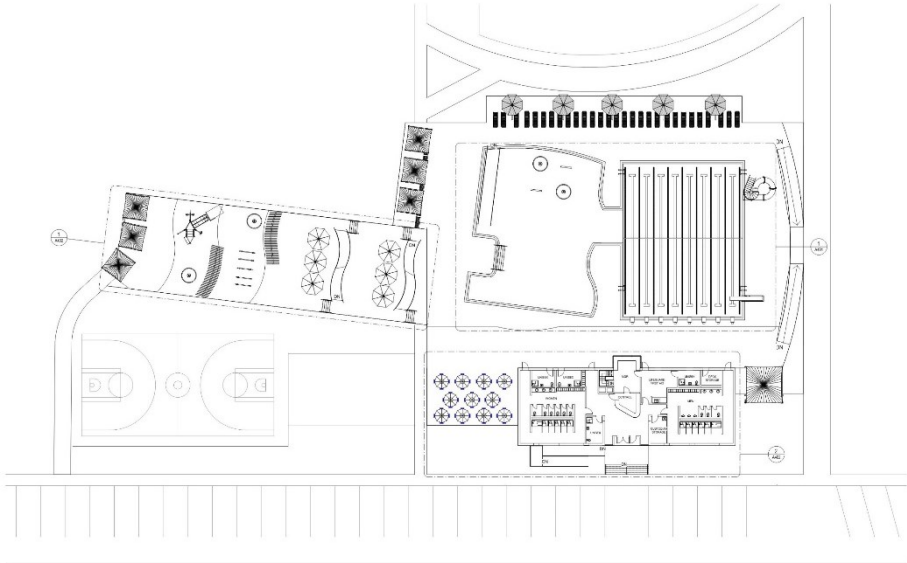
ALBEMARLE RD

Option 1



ALBEMARLE RD

Option 2



ALBEMARLE RD

Option 3

# OVERALL DESIGN PHASING + TIMELINE

PHASE I:

- ~~EXISTING FACILITIES STUDY~~ ~~8 Months~~

PHASE II:

10 Months

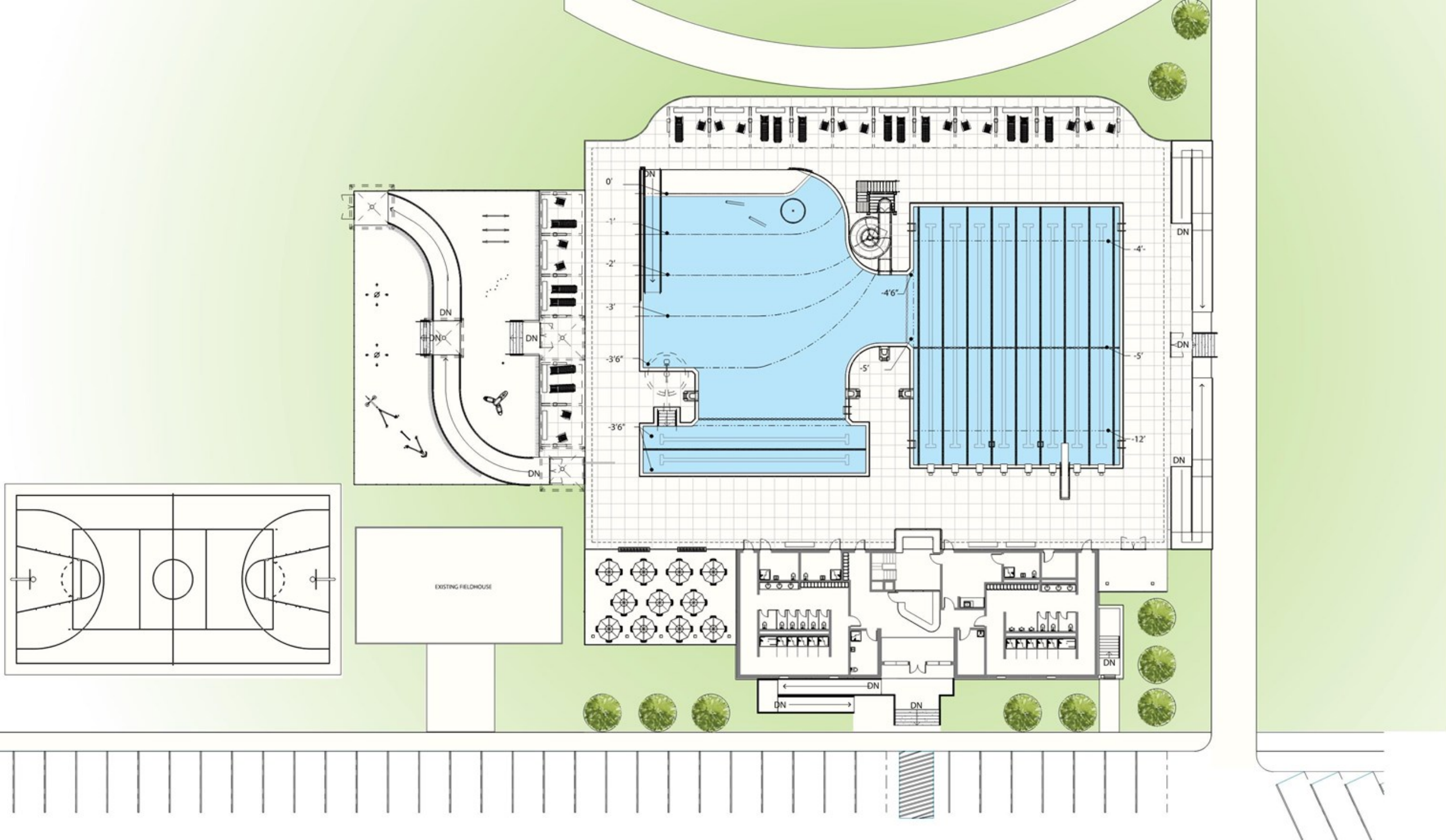
- SCHEMATIC DESIGN/SITE PLAN APPROVAL 3 MONTHS
  - Civil and Environmental Engineering Design for Conservation Commission Permitting
  - Landscape Architectural Services for Environmental permitting
  - Architecture and Aquatic design for Permitting
  - MEP Design around utilities and Stormwater design
  - Traffic and Parking Study
  - Hazardous Material Investigation
  - Geotechnical Investigation (Soil Borings and report)
  - Sustainability and technology assessment
- DESIGN DEVELOPMENT 3 MONTHS
  - Advance design resulting from SD/permitting
- CONSTRUCTION DOCUMENTS 3 MONTHS
  - Geotechnical Specifications
  - Hazardous material Specifications
  - Technological, infrastructure and equipment specification
- BIDDING 1 MONTH
  - Construction bidding assistance
  - Addenda review
  - Contractor bid evaluation assistance

PHASE III: CONSTRUCTION

~9 - 10 MONTHS

- BIDDING AWARD + CONSTRUCTION FALL 2023 – SPRING 2024





**PREFERRED PLAN**

## QUESTIONS & COMMENTS

We welcome your thoughts and comments. Please feel free to email us at:

Project email: [gathpool@newtonma.gov](mailto:gathpool@newtonma.gov)

Alejandro M. Valcarce, AIA: [avalcarce@newtonma.gov](mailto:avalcarce@newtonma.gov)

Luis Perez Demorizi: [lpdemorizi@newtonma.gov](mailto:lpdemorizi@newtonma.gov)

You can also visit the project website at:

[www.newtonma.gov/gathpoolproject](http://www.newtonma.gov/gathpoolproject)