

**Tree Removal Schedule** (see plans and arborist's report to reference tree numbers and description)

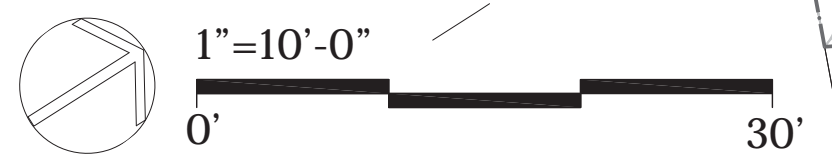
Tree #	Botanical Name	Common Name	DBH	Poor	Dead
2	<i>Picea abies</i>	Norway Spruce	23"		
3	<i>Picea abies</i>	Norway Spruce	22"		
4	<i>Picea abies</i>	Norway Spruce	18"		
5	<i>Tsuga caroliniana</i>	Carolina Hemlock			15" Woolly Adelgid infested
8	<i>Acer platanoides</i>	Norway Maple			13" Invasive
16	<i>Chamaecyparis spp.</i>	False Cypress	18"		
17	<i>Tsuga caroliniana</i>	Carolina Hemlock			10"
18	<i>Fraxinus americana</i>	Ash		14" (2 Trunks)	
20	<i>Allanhus altissima</i>	Tree of Heaven		13" Invasive	
21	<i>Allanhus altissima</i>	Tree of Heaven		10" Invasive	
28	<i>Stewartia pseudocamellia</i>	Japanese Stewartia (non-native)		16" (2 Trunks)	
29	<i>Quercus alba</i>	White Oak		16"	
31	<i>Quercus alba</i>	White Oak		33" (2 Trunks)	
32	<i>Abies concolor</i>	Concolor Fir	23"		
33	<i>Tsuga caroliniana</i>	Carolina Hemlock (2 Trunks)		33"	
35	<i>Betula lenta</i>	Sweet Birch	10"		
36	<i>Tsuga caroliniana</i>	Carolina Hemlock			23"
37	<i>Sciadopitys verticillata</i>	Japanese Umbrella Pine (non-native)	11"		
38	<i>Betula lenta</i>	Sweet Birch	12"		
38A	<i>Stewartia pseudocamellia</i>	Japanese Stewartia (non-native)		20" (2 Trunks) - not in report	

Total DBH for Compensation = 119" caliper inches  
 Total DBH Poor = 201" caliper inches, no compensation required  
 Total DBH Dead = 33" caliper inches, no compensation required

**Tree Compensation Schedule**

Quan.	Botanical Name	Common Name	Caliper In.	Total Caliper Inches
4	<i>Acer rubrum</i>	Red Maple	3"	12"
4	<i>Betula nigra</i> x 'Heritage'	River Birch - 3 stems 2" cal./each	6"	24"
3	<i>Betula papyrifera</i>	Paper Birch - 3 stems 2" cal/ea	4 1/2"	13.5"
2	<i>Carya ovata</i>	Shagbark Hickory	3"	6"
3	<i>Cercis canadensis</i>	Red Bud - 3 stems at 1 1/2" cal/ea	4 1/2"	13.5"
1	<i>Cornus florida</i>	White Dogwood	3"	3"
1	<i>Fagus grandifolia</i>	American Beech	4"	4"
11	<i>Ilex opaca</i>	American Holly	3"	33"
2	<i>Liquidambar styraciflua</i>	Sweet Gum	3"	6"
5	<i>Malus domestica</i>	Domestic Fruiting Apple Tree	2"	10"
9	<i>Picea glauca</i>	White Spruce	3 1/2"	31.5"
3	<i>Thuja occidentalis</i>	Eastern Arborvitae	2"	6"
15	<i>Thuja occidentalis</i>	Eastern Arborvitae	3"	45"

Proposed Compensation = 207.5"  
 Required Compensation = 119"



REAR YARD SITE IMPROVEMENTS





**PROPOSED PLANT LIST**

Quan.	Botanical Name	Common Name	Size	Notes
4	<i>Acer rubrum</i>	Red Maple	2 1/2"-3" cal.	B&B
4	<i>Betula nigra</i>	River Birch	12'-14' HT.	B&B, multi-stemmed 3 min. at 2" cal/ea.
3	<i>Betula papyrifera</i>	Paper Birch	12'-14' HT.	B&B, multi-stemmed 3 min. at 1 1/2" cal/ea.
2	<i>Carya ovata</i>	Shagbark Hickory	2 1/2"-3" cal.	B&B
3	<i>Cercis canadensis</i>	Red Bud	10'-12' HT.	B&B, multi-stemmed 3 min. at 1 1/2" cal/ea.
5	<i>Cornus sericea</i>	Red Osier Dogwood	3 Gallon	Hand planting only
1	<i>Cornus florida</i>	White Dogwood	2 1/2"-3" cal.	B&B, at pool patio
10	<i>Clethra alnifolia</i>	Summersweet	3 Gallon	Hand planting only
1	<i>Fagus grandifolia</i>	American Beech	3 1/2"-4" cal.	B&B
8	<i>Hydrangea quercifolia</i>	Oakleaf Hydrangea	7 Gallon	
10	<i>Ilex glabra</i>	Inkberry	3 Gallon	Hand planting only
11	<i>Ilex opaca</i>	American Holly	6'-8' HT.	B&B, Hand planting only
5	<i>Kalmia latifolia</i>	Mountain Laurel	42"-48" HT.	B&B, No Substitutions
2	<i>Liquidambar styraciflua</i>	Sweet Gum	2 1/2"-3" cal.	B&B
5	<i>Malus domestica</i> var.	Domestic Fruiting Apple T. 2" Caliper		B&B, Honeycrisp, McIntosh, Pink Lady, Green Bayberry
7	<i>Myrica pennsylvanica</i>	Bayberry	7 Gallon	
7	<i>Ribes americanum</i>	Amer. Red/Black Currant	5 Gallon	Mix varieties per availability
12	<i>Rubus idaeus</i> var. <i>strigosus</i>	American Red Raspberry	5 Gallon	
9	<i>Picea glauca</i>	White Spruce	8'-10' HT.	B&B
3	<i>Thuja occidentalis</i>	Eastern Arborvitae	7'-8' HT.	B&B - at Sports Court fence
15	<i>Thuja occidentalis</i>	Eastern Arborvitae	8'-10' HT.	B&B - hand planted
17	<i>Vaccinium corymbosum</i>	Highbush Blueberry	5 Gallon	
3	<i>Viburnum plicatum</i>	Doublefile Viburnum	3'-4' HT.	

Quan.	Botanical Name	Common Name	Size	Notes
30	<i>Astilbe</i>	False Spirea	2 gallon	to house foundation
3	<i>Betula</i>	Birch	14'-16' HT.	B&B
4	<i>Cornus florida</i>	American Dogwood	10' HT.	B&B, 2" caliper, move to edges
34	<i>Cornus alba</i>	Red Twig Dogwood	3'-4' HT.	plant in clumps & along sports wall
9	<i>Hydrangea quercifolia</i>	Oakleaf Hydrangea	3'-4' HT.	plant in clumps
33	<i>Leucothoe axillaris</i>	Coast Leucothoe	30" HT.	plant in clumps
1	<i>Magnolia spp.</i>	Magnolia	10' HT.	B&B, 1 1/2" caliper
21	<i>Rhododendron max.</i>	Rhododendron Max.	3' HT.	plant in clumps
1	<i>Picea glauca</i>	White Spruce	14' HT.	B&B
5	<i>Thuja occidentalis</i>	Arborvitae	12' HT.	B&B

**CONSERVATION AREA SEED MIX**

NEW ENGLAND WETLAND PLANTS, INC.  
 820 WEST STREET, AMHERST, MA 01002  
 PHONE: 413-548-8000 FAX 413-549-4000  
 EMAIL: INFO@NEWENP.COM WEB ADDRESS: WWW.NEWENP.COM

Botanical Name	Common Name	Indicator
<i>Elymus virginicus</i>	Virginia Wild Rye	FACW
<i>Scirpus americanus</i>	Little Bluestem	FACU
<i>Andropogon gerardii</i>	Big Bluestem	FAC
<i>Festuca rubra</i>	Red Fescue	FACU
<i>Sorghastrum nutans</i>	Indian Grass	UPL
<i>Panicum virgatum</i>	Switch Grass	FAC
<i>Chamaecrista fasciculata</i>	Partridge Pea	FACU
<i>Desmodium canadense</i>	Showy Tick Trefoil	FAC
<i>Asclepias tuberosa</i>	Butterfly Milkweed	NI
<i>Bidens frondosa</i>	Beggar Ticks	FACW
<i>Eupatorium purpureum (Eutrochium maculatum)</i>	Purple Joe Pye Weed	FAC
<i>Rudbeckia hirta</i>	Black Eyed Susan	FACU
<i>Aster pilosus (Symphyotrichum pilosum)</i>	Heath (or Hairy) Aster	FACU
<i>Solidago juncea</i>	Early Goldenrod	UPL

- GENERAL NOTES:**
- Tree protection:
    - No mechanical equipment will be used beyond the erosion control line with the exception of transplanting existing trees in the first phase of site work.
    - During construction, measures to limit disturbance to existing Trees and Shrub vegetation that will remain will be implemented and include wrapping of trunks. See detail on L-7.
    - All protected trees will be marked to ensure handwork stays away from them.
    - No tree cutting will occur beyond noted trees that are dead, in poor health or invasive.
    - No cutting of shrubs is proposed.
  - Construction:
    - Plantings and site restoration will commence from the rear of the site and work back towards the house away from the wetlands. The access path will be re-vegetated after use with the proposed plantings and conservation seed mix where minor site disturbance occurs.
    - All work beyond the erosion control line/limits of grading and all planting within jurisdictional areas must be supervised by a wetland scientist or landscape architect to prevent unpermitted disturbance or impacts to jurisdictional areas.







Cornus florida  
Dogwood



Betula nigra x 'Heritage'  
River Birch



Betula papyrifera  
Paper Birch



Cercis canadensis  
Eastern Red Bud



Vaccinium corymbosum  
Highbush Blueberry



Clethra  
Summersweet



Malus domestica var.  
Fruiting Apple Tree



Rubus idaeus var. strigosus  
American Red Raspberry



Ribes americanum  
American Black Currant



Hydrangea quercifolia  
Oakleaf Hydrangea



Thuja occidentalis  
Eastern Arborvitae



Picea glauca  
White Spruce



Viburnum plicatum  
Doublefile Viburnum



Kalmia latifolia  
Mountain Laurel



Acer rubrum  
Red Maple



Cornus sericea  
Red Osier Dogwood



Liquidambar styraciflua  
Sweet Gum

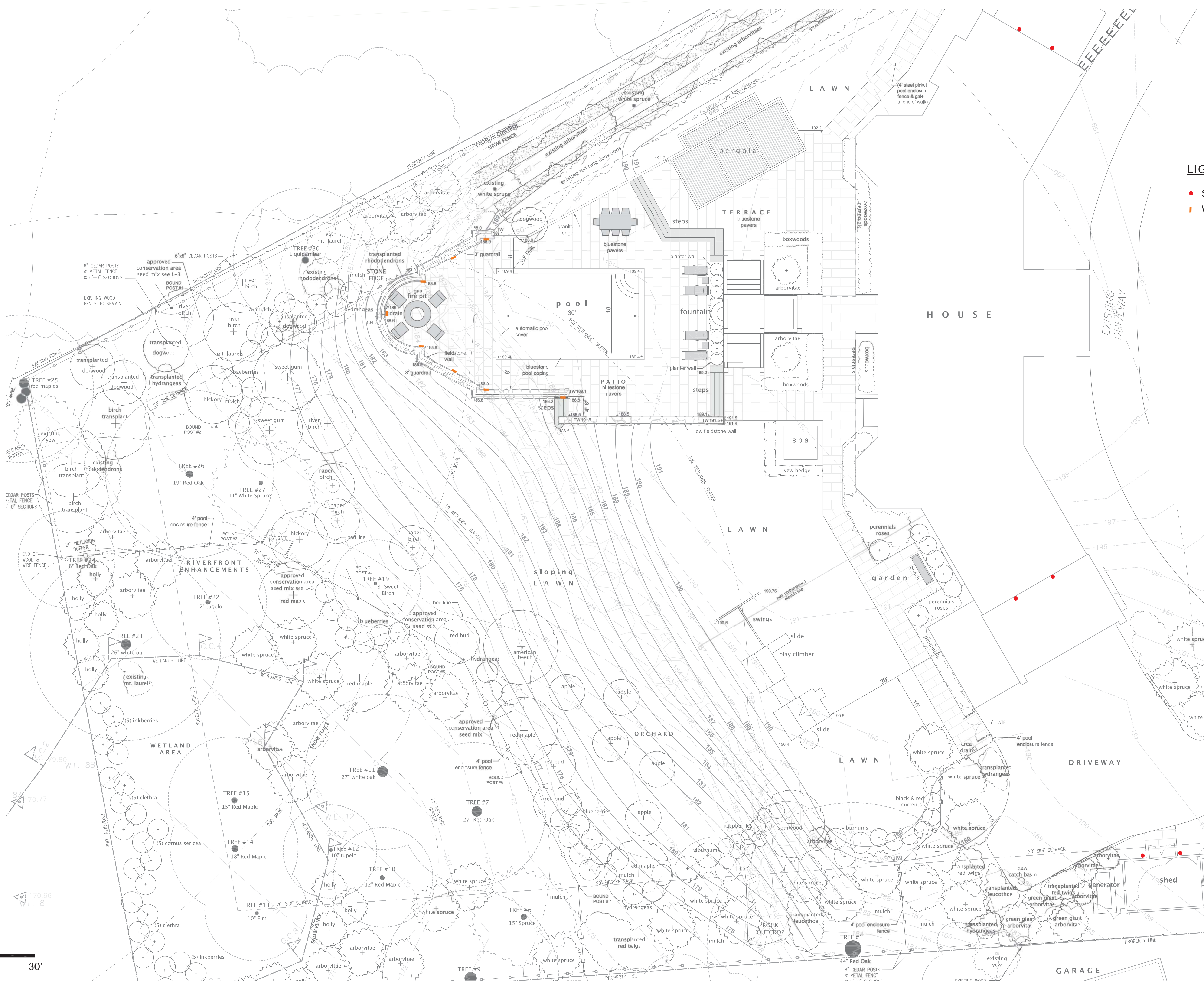


Ilex opaca  
American Holly



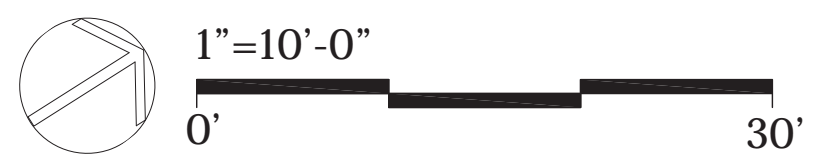
REAR YARD SITE IMPROVEMENTS





**LIGHTING LEGEND**

- Sconce Light
- Wall Light



**REAR YARD SITE IMPROVEMENTS**