

# CRAFTS STREET

ELDER HOUSING WITH SERVICES

LAND USE PRESENTATION - SUPPLEMENTAL GRAPHICS

JULY 15, 2022

GENERATOR:  
ESTIMATED 70-90 DBA AT 23 FEET  
DEPENDANT UPON ENCLOSURE TYPE

GARAGE DOORS: STANDARD SPECIFIED  
DOOR IS NO METAL TO METAL CONTACT,  
DESCRIBED AS "ULTRA QUIET"

**Potential Noise Generation from  
Exterior Building Equipment**





**Rooftop Plan**

CHATHAM  
CENTER  
(29)





**Aerial View Showing Pedestrian Connector**



© ELKUS MANFREDI ARCHITECTS

### View from North on Crafts



© ELKUS MANFREDI ARCHITECTS

**View from Between Marty's and Wholefoods**





© ELKUS MANFREDI ARCHITECTS

## View from Court Street



**Courtyard View**



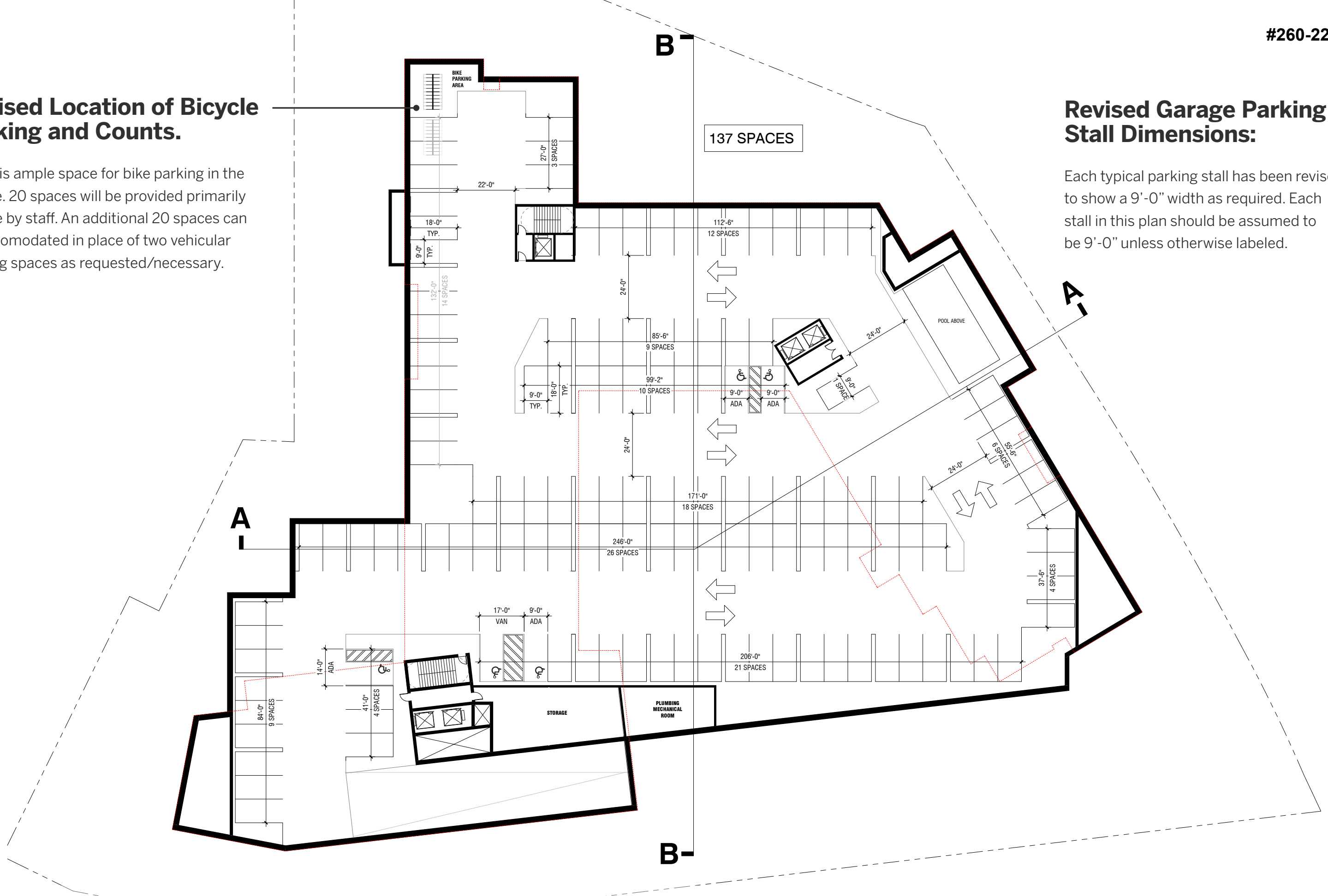
**View of Service Path**

### Revised Location of Bicycle Parking and Counts.

There is ample space for bike parking in the garage. 20 spaces will be provided primarily for use by staff. An additional 20 spaces can be accommodated in place of two vehicular parking spaces as requested/necessary.

### Revised Garage Parking Stall Dimensions:

Each typical parking stall has been revised to show a 9'-0" width as required. Each stall in this plan should be assumed to be 9'-0" unless otherwise labeled.





Pedestrian opening  
at Court Street gate

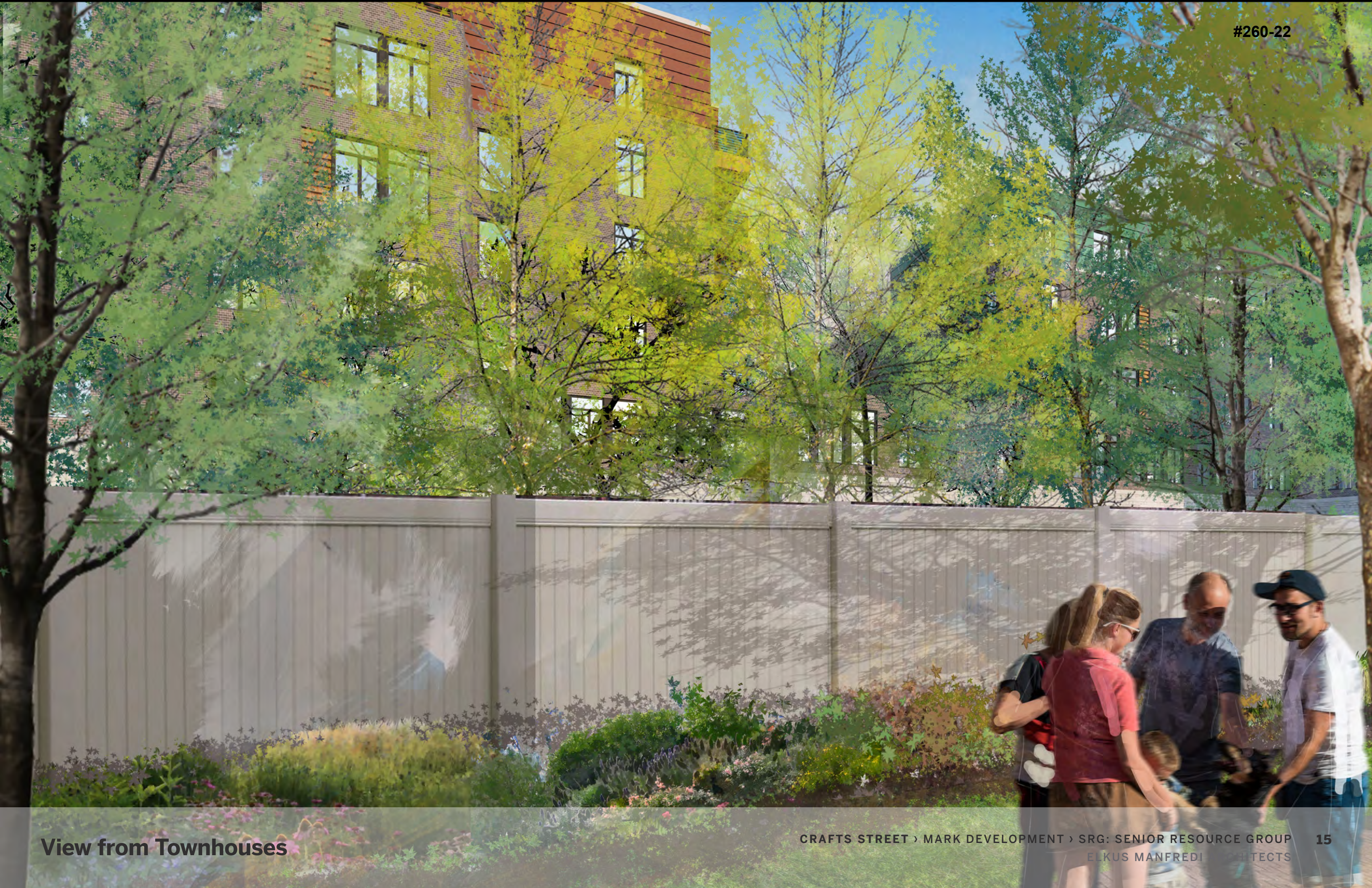
Court to Crafts Street  
Pedestrian Connection

**Pedestrian Loop**

(2) Covered bike parking racks

(2) Covered bike parking racks

# Exterior Bike Parking



View from Townhouses



© ELKUS MANFREDI ARCHITECTS

## Crafts Street Entry Close Up