







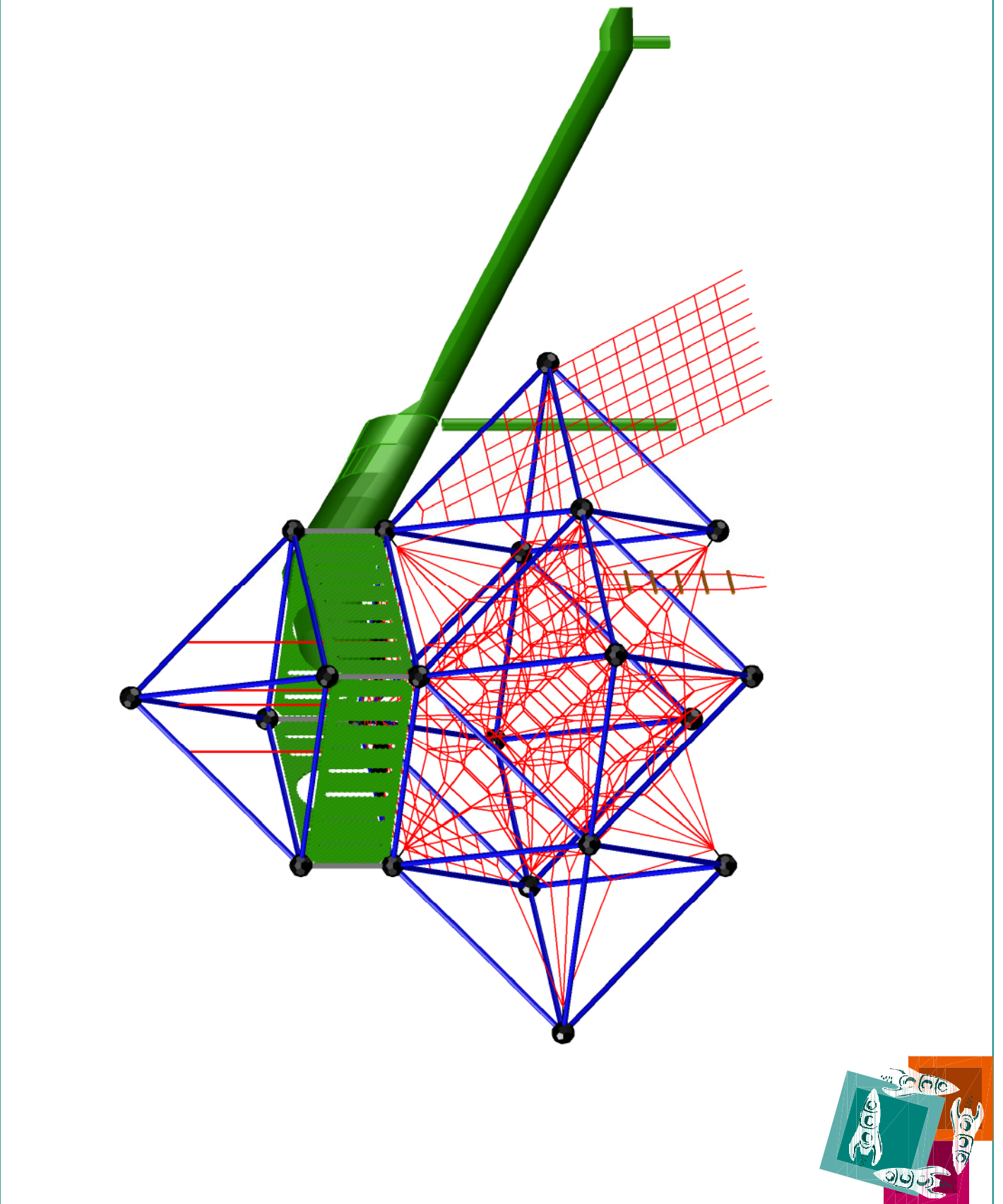
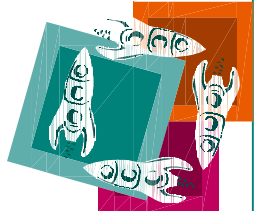
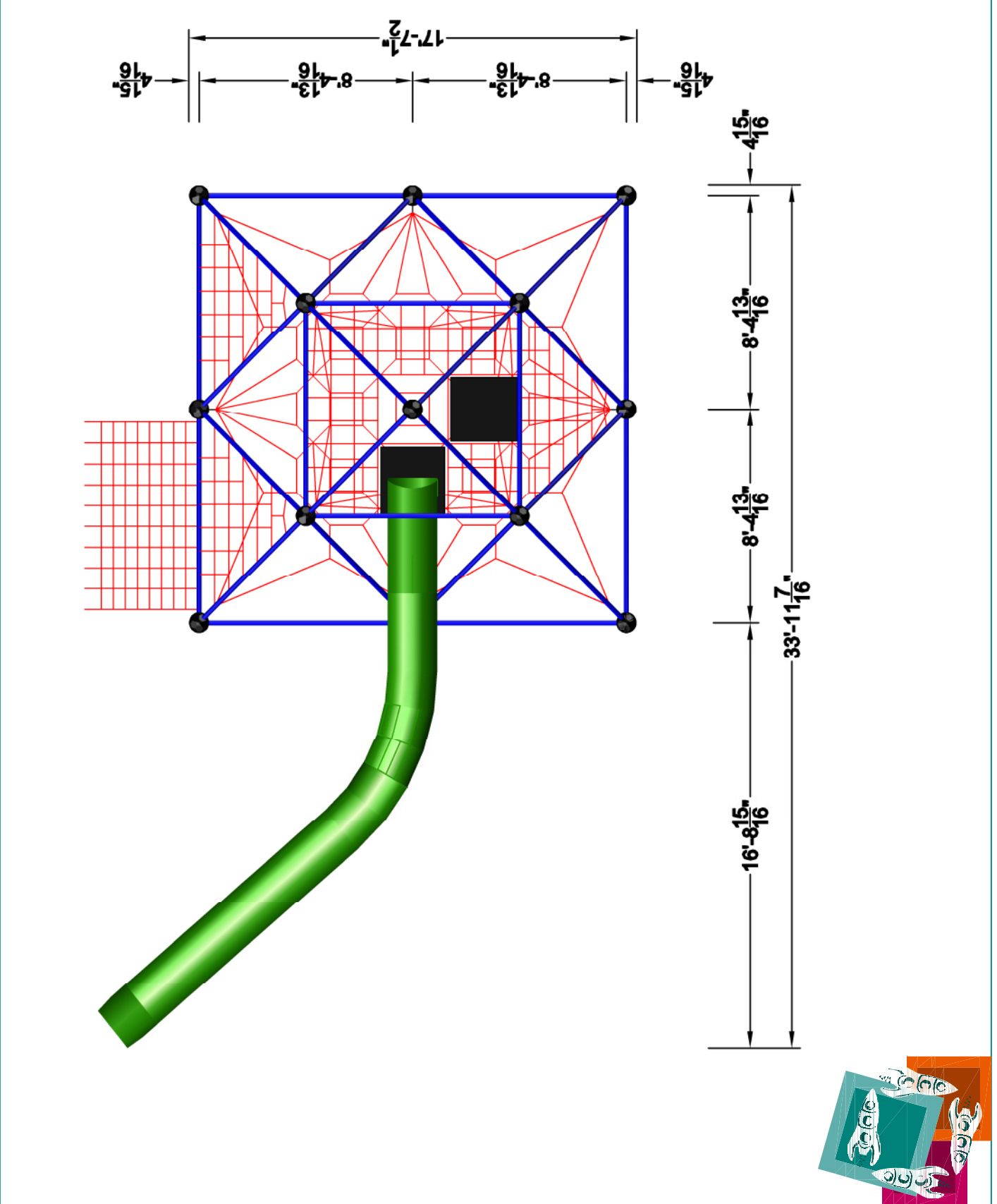
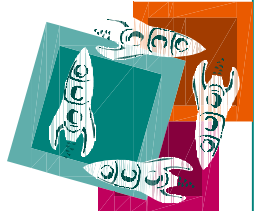
 <b>Univers</b> The Cairns School	<b>KOM. 1103.00</b> USP.00072.	 (m) 10,35 x 5,37 x 6,57 (") 33'-12" x 17'-8" x 21'-6"	 EN 1176 (m <sup>2</sup> ) ASTM/CSA (m <sup>2</sup> ) 121,0 Australian Standard (m <sup>2</sup> )	 (m) 2,50 (") 8'-3"	 EN 1176 (m) ASTM/CSA (m) 47,20 Australian Standard (m)	<b>Anno</b> 28.06.2010		 H. Stoppel L. Vardanian	 ANSI A 8.5" x 11"	
---	-----------------------------------	---	---	--	---	---------------------------	---	--	---	---

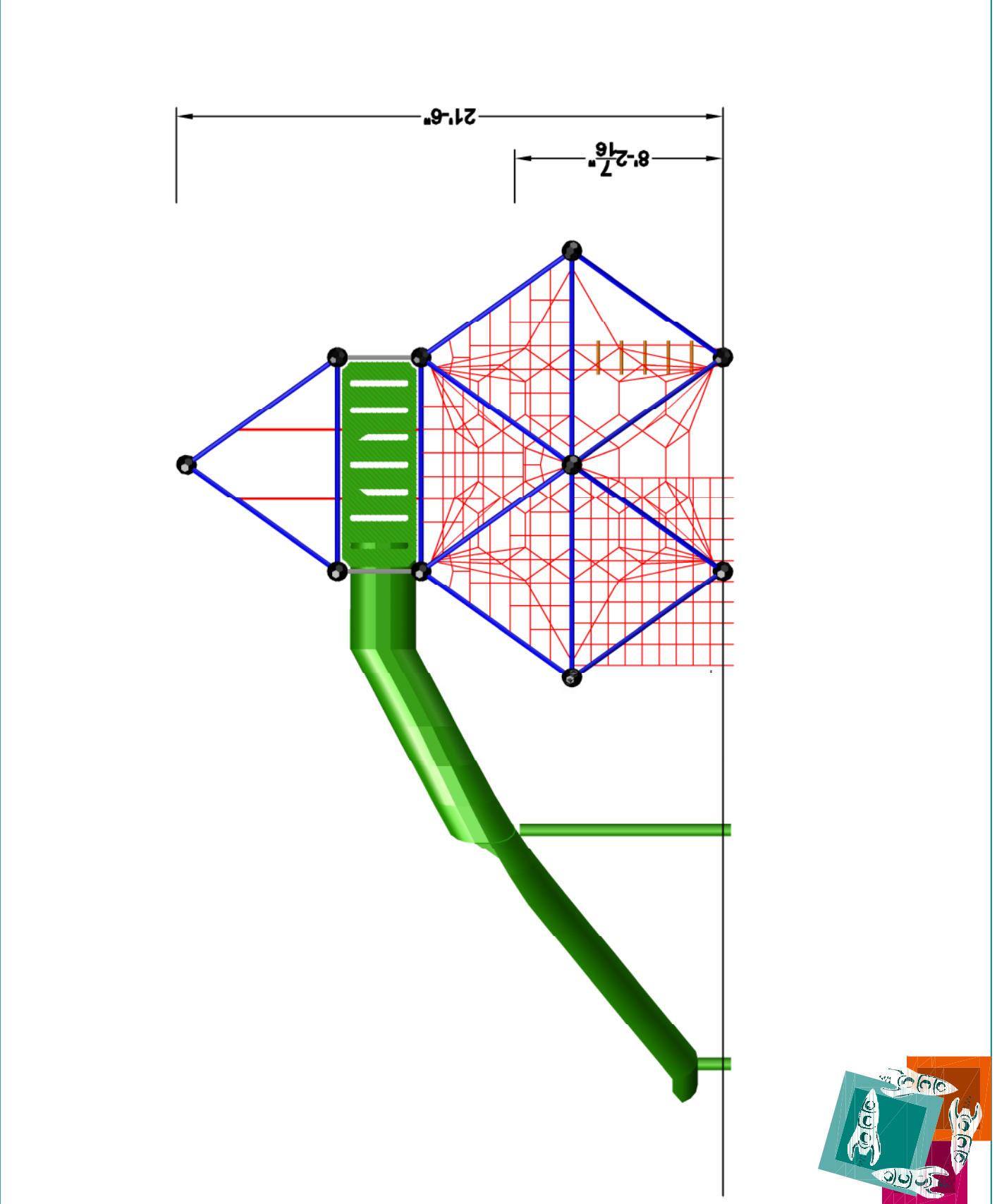
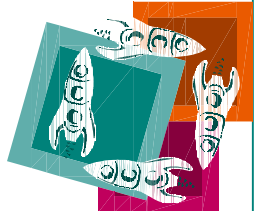


	<b>Univers</b> The Carroll School
	<b>KOM. 1103.00</b> <b>USP.00072.</b>
	(m) 10,35 x 5,37 x 6,57 (") 33'-12" x 17'-8" x 21'-6"
	EN 1176 (m <sup>2</sup> ) ----- ASTM/CSA (m <sup>2</sup> ) 121,0 Australian Standard (m <sup>2</sup> ) -----
	(m) 2,50 (") 8'-3"
	EN 1176 (m) ----- ASTM/CSA (m) 47,20 Australian Standard (m) -----
	<b>Anno</b> <b>28.06.2010</b>
	----- ----- -----
	<b>H. Stoppel</b> <b>L. Vardanian</b>
	<b>ANSI A</b> 8.5" x 11"
	----- ----- -----



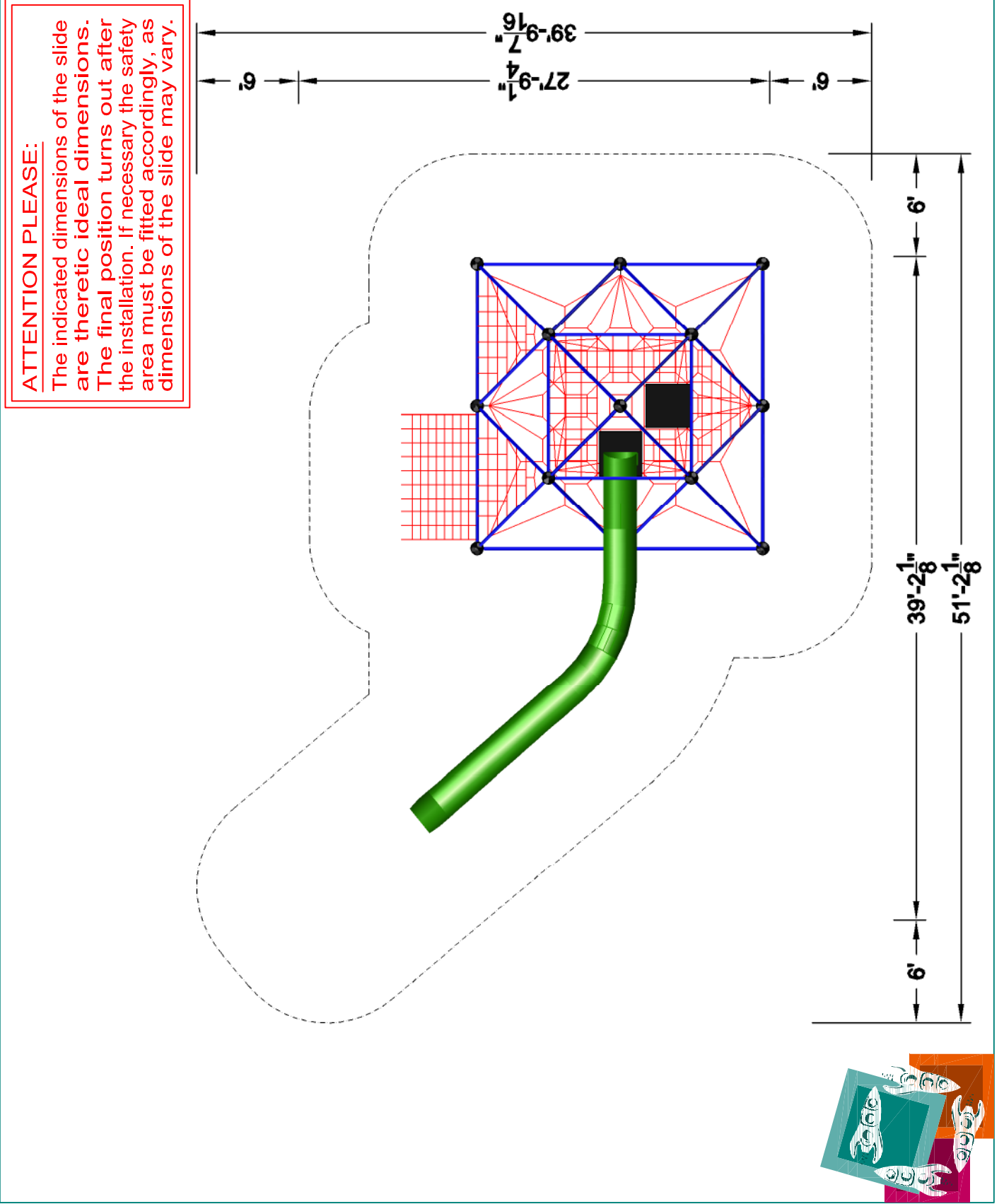
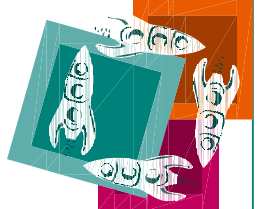


	<b>Univers</b> The Carroll School
	KOM. 1103.01 USP.00072.
	(m) 10,35 x 5,37 x 6,57 (") 33'-12" x 17'-8" x 21'-6"
	EN 1176 (m <sup>2</sup> ) ----- ASTM/CSA (m <sup>2</sup> ) 121,0 Australian Standard (m <sup>2</sup> ) -----
	(m) 2,50 (") 8'-3"
	EN 1176 (m) ----- ASTM/CSA (m) 47,20 Australian Standard (m) -----
	Anno 28.06.2010
	H. Stoppel L. Vardanian
	ANSI A 8.5" x 11"
	3/16"=1'-0"



	<b>Univers</b> The Cairrol School
	KOM. 1103.02 USP.00072.
	(m) 10,35 x 5,37 x 6,57 ('-") 33'-12" x 17'-8" x 21'-6"
	EN 1176 (m <sup>2</sup> ) ----- ASTM/CSA (m <sup>2</sup> ) 121,0 Australian Standard (m <sup>2</sup> ) -----
	(m) 2,50 ('-") 8'-3"
	EN 1176 (m) ----- ASTM/CSA (m) 47,20 Australian Standard (m) -----
	Anno 28.06.2010
	----- ----- -----
	H. Stoppel L. Vardanian
	ANSI A 8.5" x 11"
	3/16"=1'-0"





ASTM/CSA	<b>Univers</b> The Cairrol School	KOM. 1103.09 USP.00072.	(m) 10,35 x 5,37 x 6,57 ('-") 33'-12" x 17'-8" x 21'-6"	EN 1176 (m <sup>2</sup> ) ----- ASTM/CSA (m <sup>2</sup> ) 121,0 Australian Standard (m <sup>2</sup> ) -----	(m) 2,50 ('-") 8'-3"	EN 1176 (m) ----- ASTM/CSA (m) 47,20 Australian Standard (m) -----	Anno 28.06.2010	H. Stoppel L. Vardanian	ANSI A 8.5" x 11"	1/8"=1'-0"
----------	--------------------------------------	----------------------------	--	--	-------------------------	--	--------------------	----------------------------	----------------------	------------

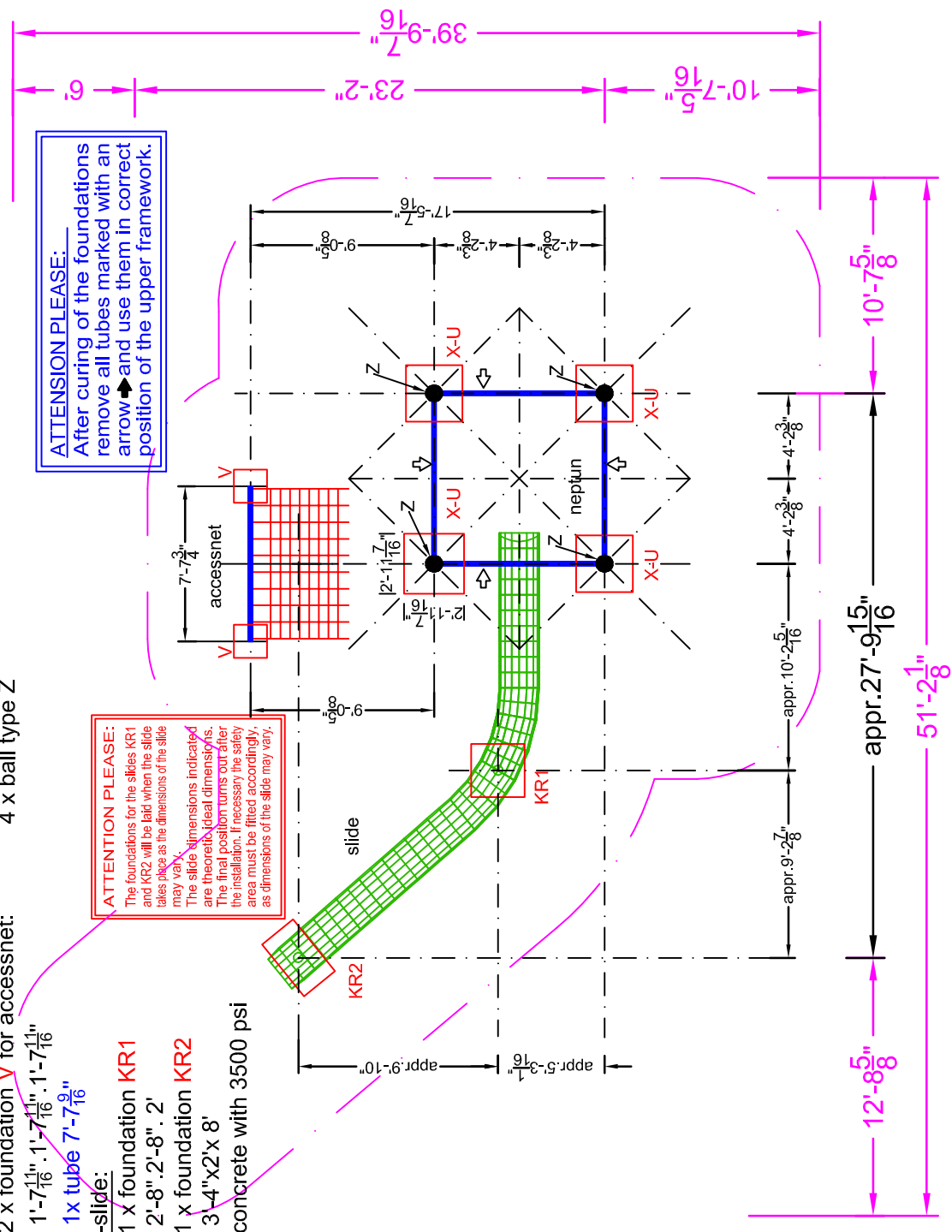
- foundations:**  
 4 x foundation X-U for neptun:  
 $2'1\frac{7}{16}" \times 2'11\frac{7}{16}" \times 1'7\frac{11}{16}"$   
 2 x foundation V for accessnet:  
 $1'7\frac{11}{16}" \cdot 1'7\frac{11}{16}" \cdot 1'7\frac{11}{16}"$   
 1 x tube  $7-7\frac{9}{16}"$


- slide:**  
 1 x foundation KR1  
 $2'-8" \cdot 2'-8" \cdot 2'$   
 1 x foundation KR2  
 $3'-4" \times 2' \times 8'$   
 concrete with 3500 psi

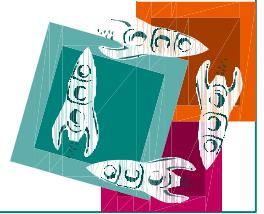
- foundation template(neptun):**  
 4 x foundation tube  $2\frac{3}{8}" \cdot 2'-8\frac{1}{2}"$   
 4 x tube  $2\frac{3}{8}" \cdot 7'-7\frac{9}{16}"$   
 4 x ball type Z

**ATTENTION PLEASE:**  
 After curing of the foundations remove all tubes marked with an arrow and use them in correct position of the upper framework.

**ATTENTION PLEASE:**  
 The foundations for the slides KR1 and KR2 will be laid when the slide takes place as the dimensions of the slide may vary.  
 The slide dimensions indicated are theoretical ideal dimensions. The final position turns out after the installation. If necessary the safety area must be fitted accordingly, as dimensions of the slide may vary.




**Univers**  
 The Cairo School  
 No. KOM. 1103.11  
 USP.00072.  
 (m) 10.35 x 5.37 x 6.57  
 (-") 33'-12" x 17'-8" x 21'-6"  
 EN 1176 (m<sup>2</sup>)  
 ASTM/CSA (m<sup>2</sup>) 121,0  
 Australian Standard (m<sup>2</sup>)  
 (m) 2,50  
 (-") 8'-3"  
 EN 1176 (m)  
 ASTM/CSA (m) 47,20  
 Australian Standard (m)  
 20.07.2010  
 Anno  
 F.Mokrani  
 ANSIA  
 8.5" x 11"  
 3/16"=1'-0"

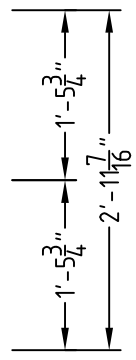
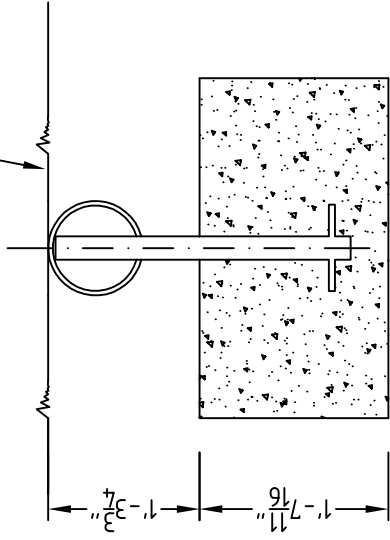


BERLINER		UNIVERS	
SEILFABRIK		Raumnetze	
Lengeder Str. 4		foundationplan	
13407 Berlin		foundation X-U	
Tel. 030 / 41 47 24-0		900x900x500mm	
1999	day	name	drawing nr.
work on	12.01	Inhülsen	FU.010.00
changed	05.2006	Ernst	scale
			1:20

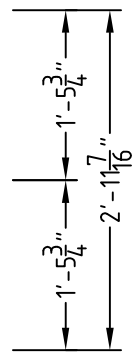
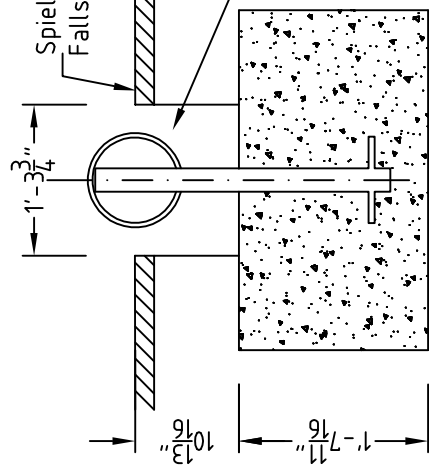
## FUNDAMENT/FOUNDATION X-U 2'11<sup>7</sup>/<sub>16</sub>"x2'11<sup>7</sup>/<sub>16</sub>"x1'7<sup>11</sup>/<sub>16</sub>" concrete 3500psi

Schnitt/section

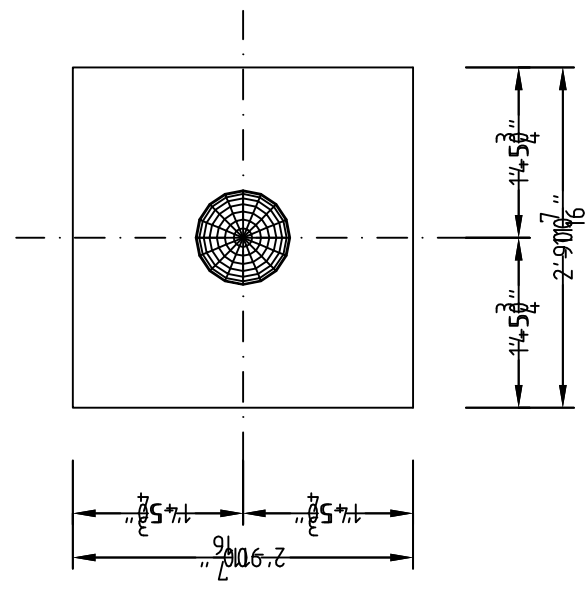
Spielebene / playground  
Sandaufschüttung / sand filling



Spielebene / playground  
Fallschutzplatten / rubber matting  
Aussparrung / chase



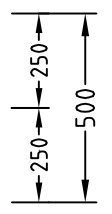
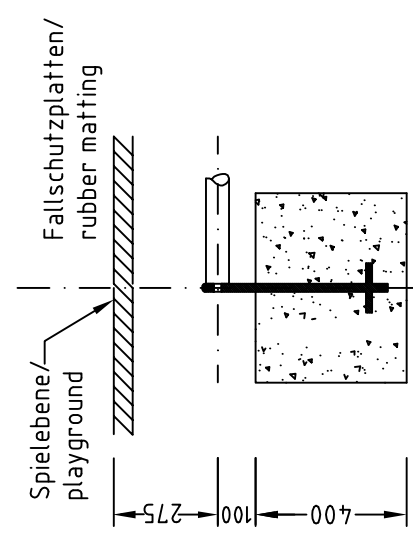
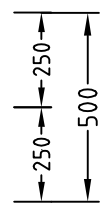
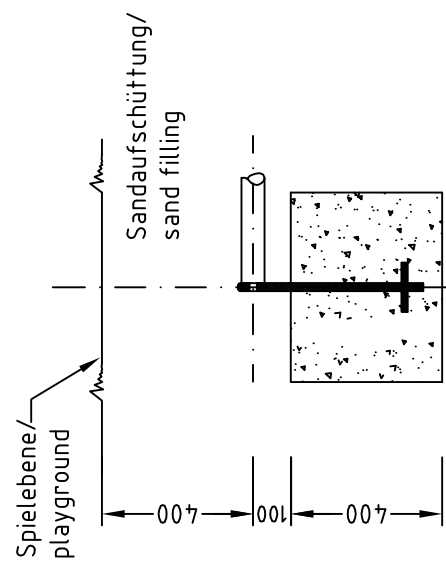
Draufsicht/top view



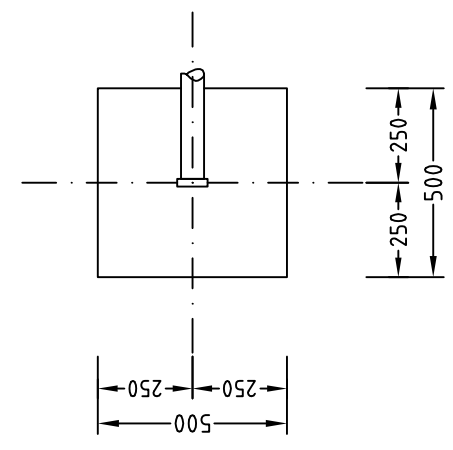
BERLINER SEILFABRIK		QUADROPOLIS Spielbauten foundationplan	
Lengeder Str. 4 13407 Berlin Tel. 030 / 414724-0		foundation V 500x500x400mm	
1999	day	name	drawing nr.
work on	29.01	Inhülsen	FU.005.00
changed	05.2006	Ernst	scale
			1:20

**FUNDAMENT/FOUNDATION V**  
**500X500X400MM C20/25**  
**1'-7<sup>11</sup>/<sub>16</sub>" . 1'-7<sup>11</sup>/<sub>16</sub>" . 1'-7<sup>11</sup>/<sub>16</sub>"**  
**PSI 3000**

Schnitt/section



Draufsicht/top view

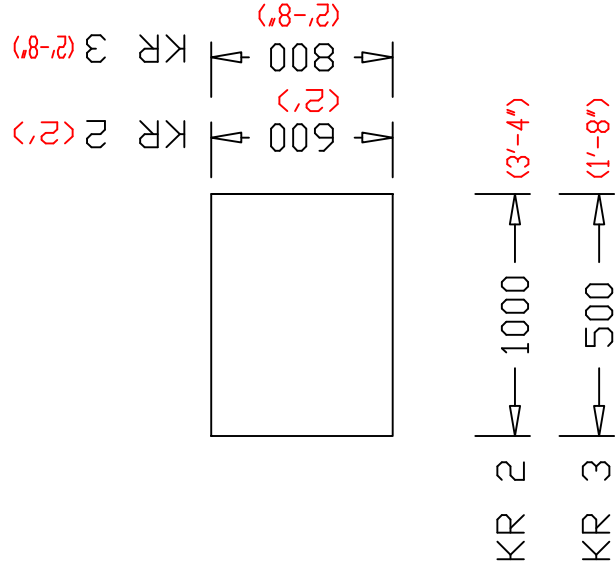
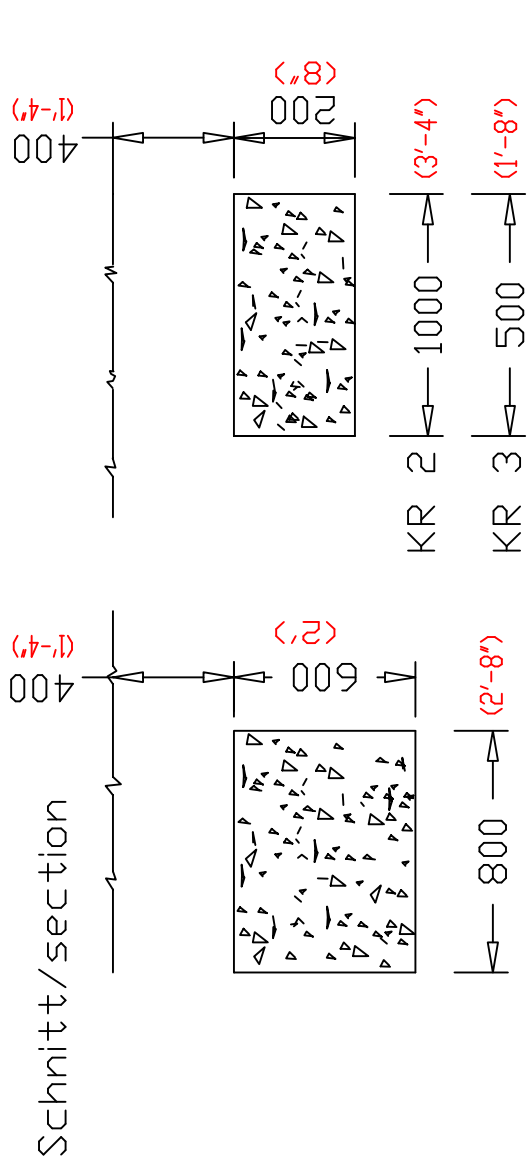




<b>BERLINER</b>	<b>UNIVERS</b>
SEILFABRIK	Kurvenrutsche
Lengeder Str. 4	Fundamentplan
13407 Berlin	Fundamente
Tel. 030 / 41 47 24-0	KR1, KR2, KR3
2000 Tag Name	Zeichn.Nr.
Bearb. 2809 Stoppel	UFU.003.00
Geänd.	Maßs. 1:25

Rutschenauslauf KR2, KR3  
slide end KR2, KR3

Mittelstütze KR1  
Slide middle KR1



Fundament Mittelstütze KR1  
foundation slide, middle KR1  
1 Stck. 800x800x600mm C20/25  
2'-8"x2'-8"x 2' C20/25

Fundament Rutschenauslauf KR2, KR3  
foundations slide, end KR2, KR3  
1 Stck. 1000x600x200mm C20/25 (KR2)  
3'-4"x2'x 8' C20/25 (KR2)  
1 Stck. 500x800x200mm C20/25 (KR3)  
1'-8"x2'-8"x8" C20/25 (KR3)

Achtung!!!  
Fundamente werden  
bei Montage werden  
Rutsche betoniert

Attention!!!  
Foundation will be  
concreted, wenn you  
mount the slide.

Draufsicht/top view

tubes:

40x tube  $2\frac{3}{8}$ "  $\frac{1}{16}$ " .2326

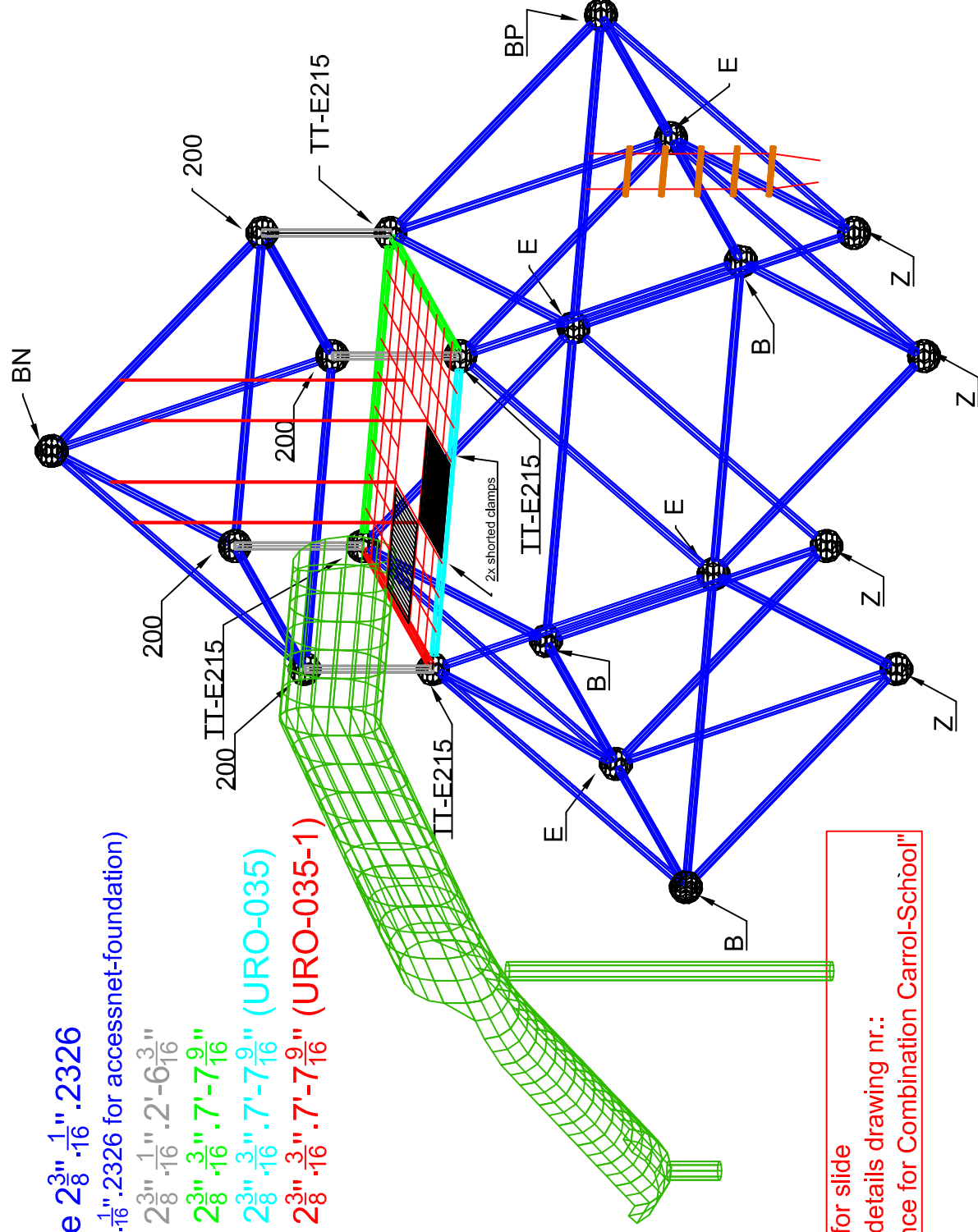
(1x tube  $2\frac{3}{8}$ "  $\frac{1}{16}$ " .2326 for accessnet-foundation)

4x tube  $2\frac{3}{8}$ "  $\frac{1}{16}$ " .2'  $6\frac{3}{16}$ "

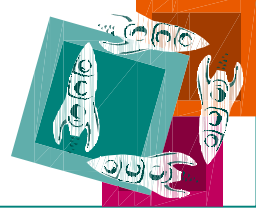
2x tube  $2\frac{3}{8}$ "  $\frac{3}{16}$ " .7'  $7\frac{9}{16}$ "

1x tube  $2\frac{3}{8}$ "  $\frac{3}{16}$ " .7'  $7\frac{9}{16}$ " (URO-035)

1x tube  $2\frac{3}{8}$ "  $\frac{3}{16}$ " .7'  $7\frac{9}{16}$ " (URO-035-1)



please see for slide  
connection details drawing nr.:  
"Slideentrance for Combination Carrol-School"



**Univers**  
The Carrol School

№ KOM.1103.10  
USP.00072.

(m) 10,35 x 5,37 x 6,57  
(") 33'-12" x 17'-8" x 21'-6"

EN 1176 (m<sup>2</sup>) ----  
ASTM/CSA (m<sup>2</sup>) 121,0  
Australian Standard (m<sup>2</sup>) ----

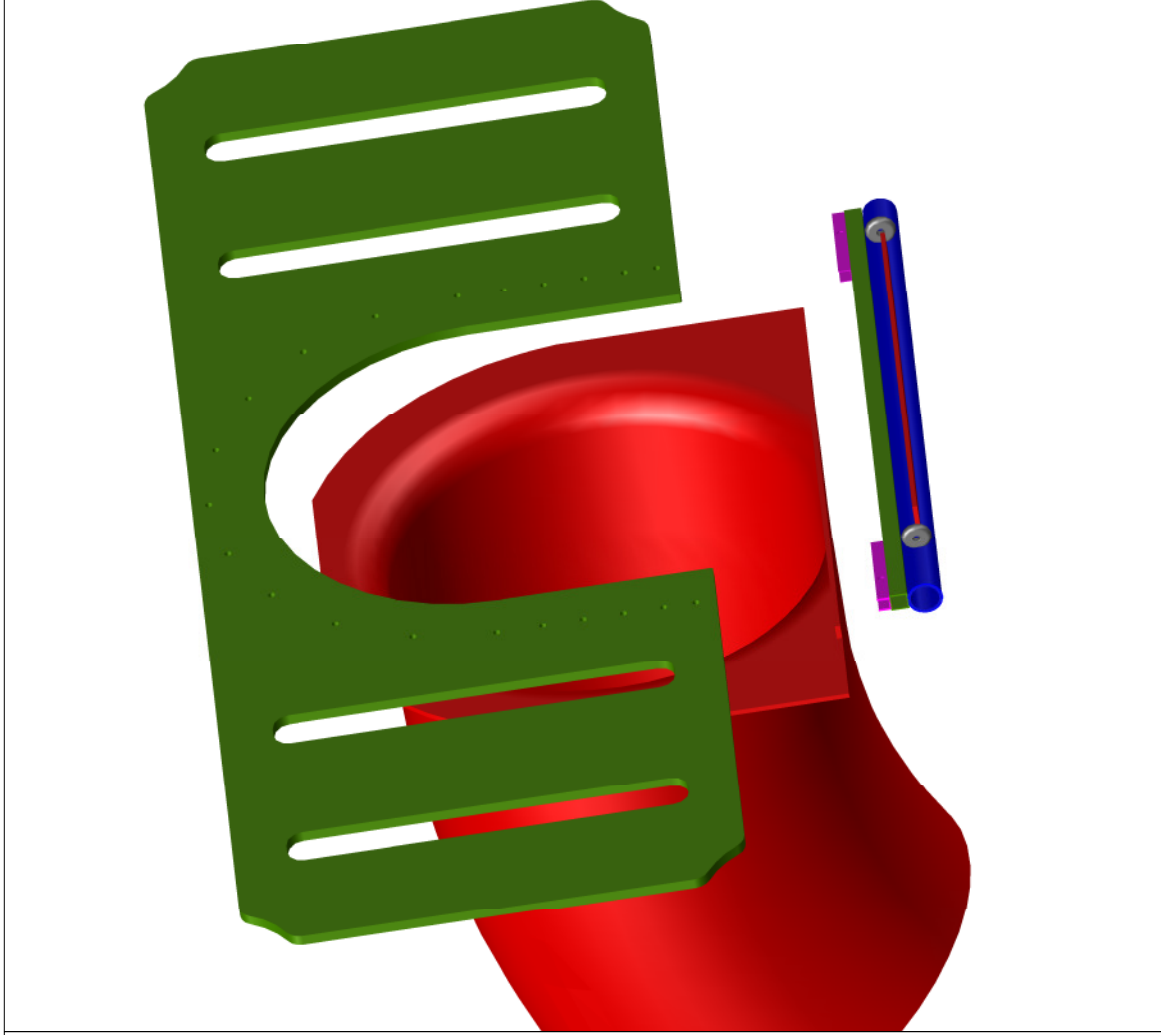
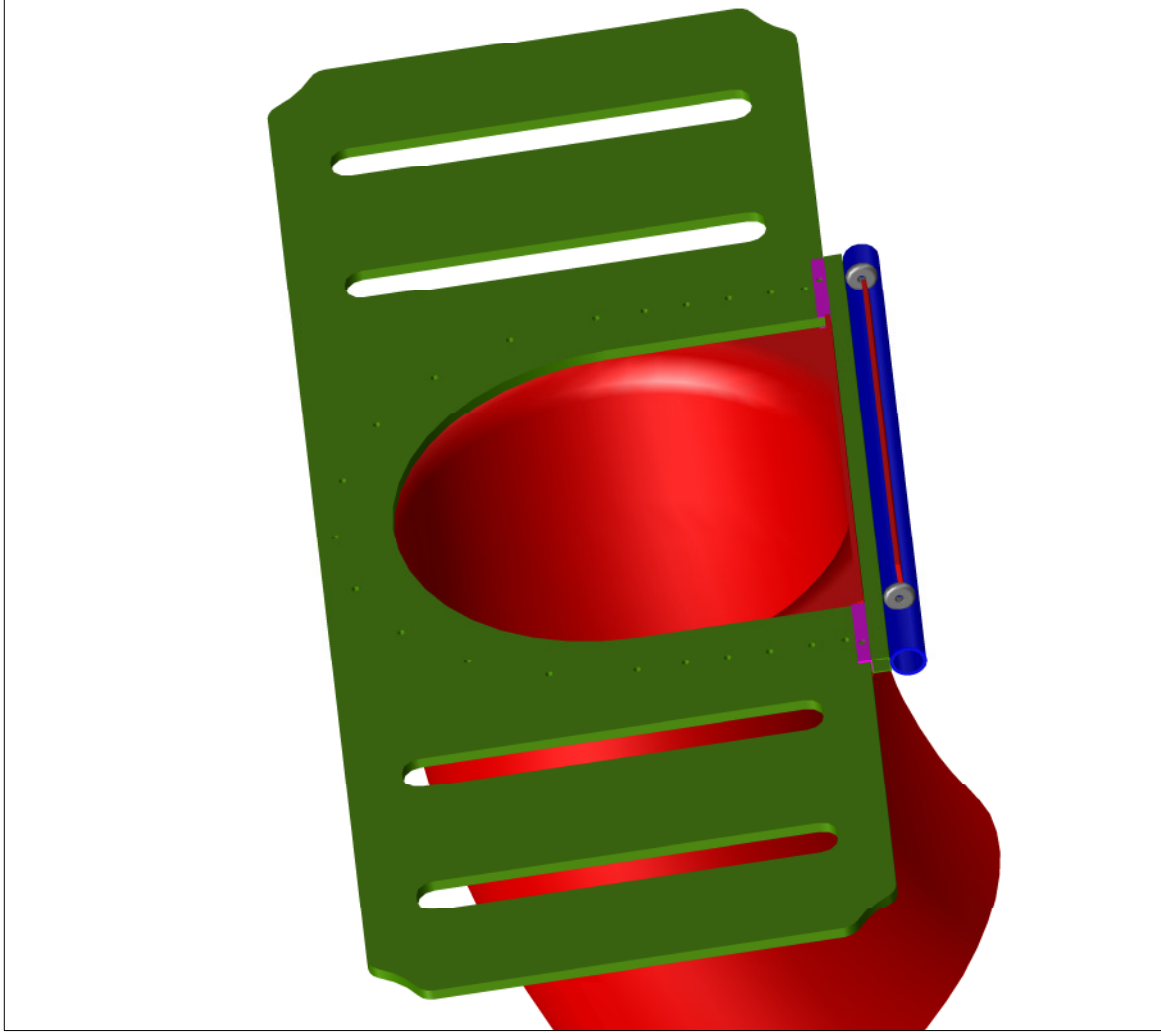
(m) 2,50  
(") 8'-3"

EN 1176 (m) 47,20  
ASTM/CSA (m) 47,20  
Australian Standard (m) ----

Anno 20.07.2010

F. Mokrani

ANSI A  
8,5" x 11"

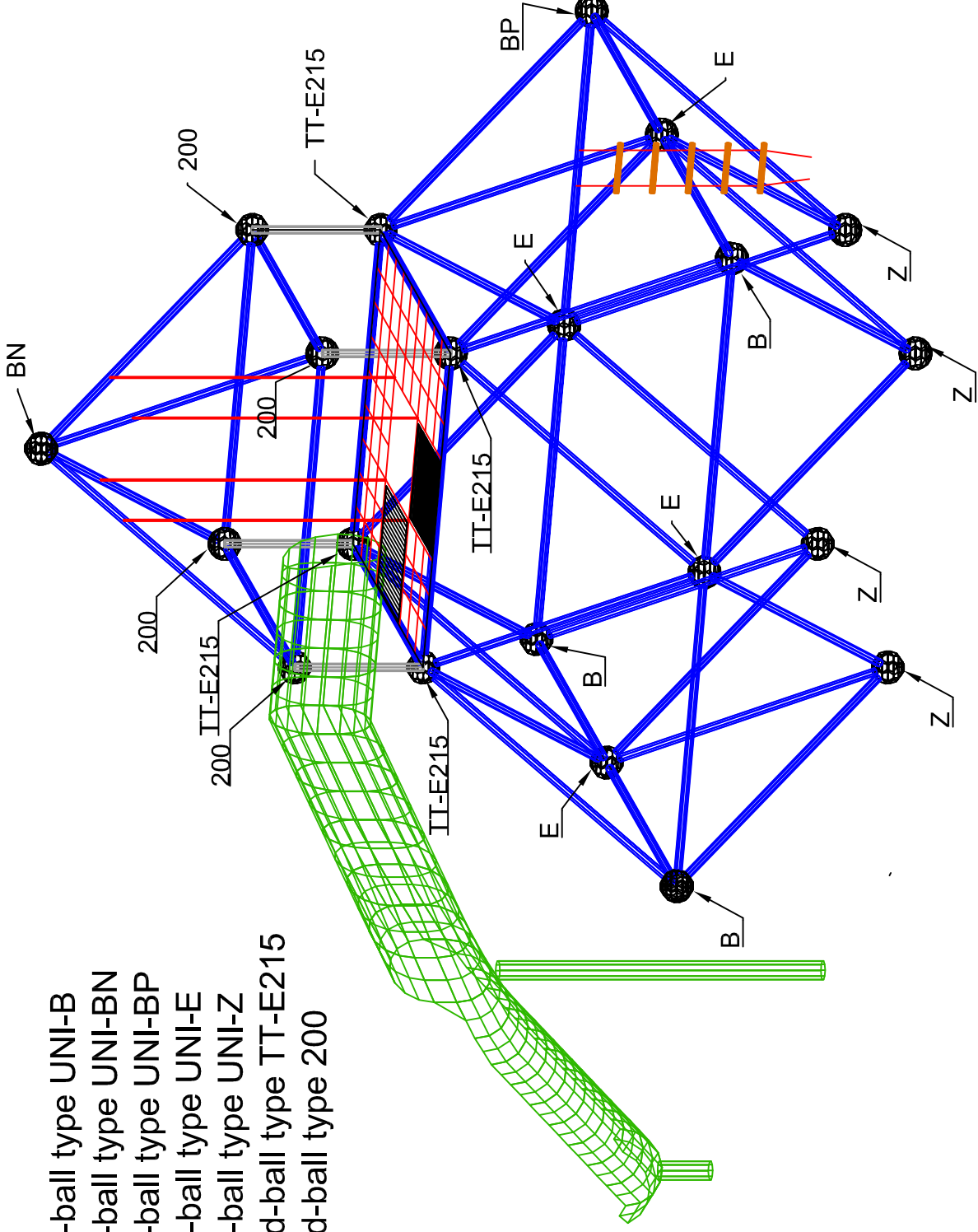


you see the slide entrance, the panel and **only** the middle part of tube. please drill all the holes for panelconnection after you connected the slide on top of the squaretube. the holes in the panel to connect this one in the U-section, please drill after you adjusted the panel in the tube frame.



balls:

- 3 xBSF-ball type UNI-B
- 1 xBSF-ball type UNI-BN
- 1 xBSF-ball type UNI-BP
- 4 xBSF-ball type UNI-E
- 4 xBSF-ball type UNI-Z
- 4 xQuad-ball type TT-E215
- 4 xQuad-ball type 200



Univers  
The Carroll School

KOM.1103.10  
USP.00072.

(m) 10,35 x 5,37 x 6,57  
('-") 33'-12" x 17'-8" x 21'-6"

EN 1176 (m<sup>2</sup>)  
ASTM/CSA (m<sup>2</sup>) 121,0  
Australian Standard (m<sup>2</sup>)

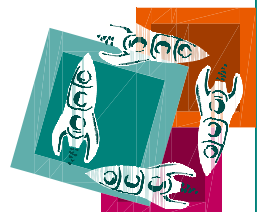
(m) 2,50  
('-") 8'-3"

EN 1176 (m)  
ASTM/CSA (m) 47,20  
Australian Standard (m)

Anno 20.07.2010

F.Mokrani

ANSI A  
8.5" x 11"



# Triple Palmetto Saucer ASTM/CSA SON.633



  
**Berliner**

Berliner Seilfabrik GmbH & Co.  
Lengeder Straße 2/4  
13407 Berlin

Tel. +49.(0)30.41 47 24-0  
Fax +49.(0)30.41 47 24-33




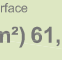





info@berliner-seilfabrik.com  
www.berliner-seilfabrik.com



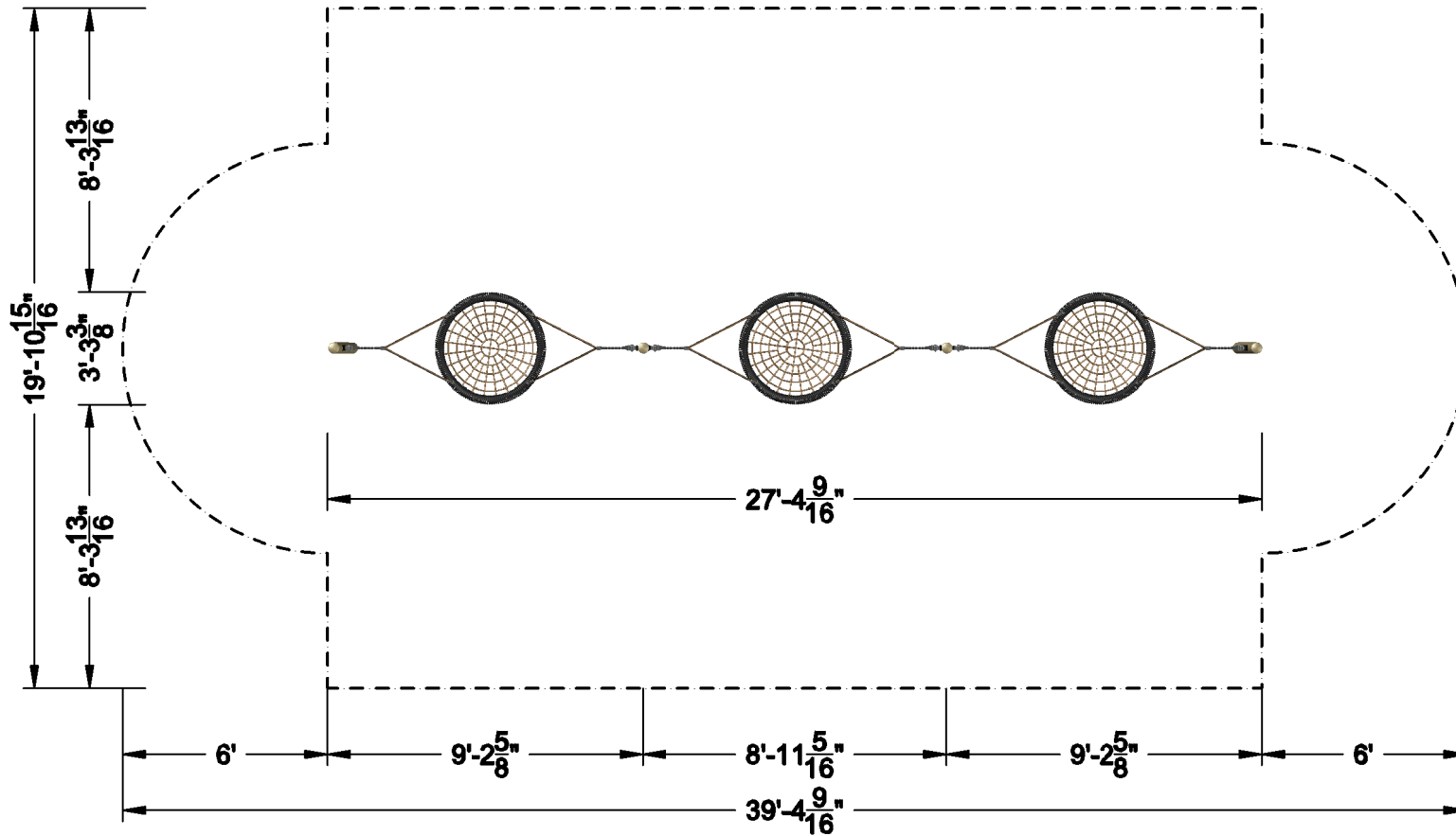
## Triple Palmetto Saucer ASTM/CSA-VERSION

**SON.633 .01**



	Dimensions (l x w x h) <b>('-") 3'-4" x 27'-5" x 6'-11"</b>		Free height of fall <b>('-") 4'-9"</b>
	Minimum space required <b>('-") 39'-5" x 19'-11"</b>		Surface <b>(m<sup>2</sup>) 61,15</b>
	Format		Scale
	Date <b>14.06.2018</b>		Name <b>KOTTE</b>
	Change (Name) <b>1.</b> <b>2.</b>	<b>3.</b> <b>4.</b>	





## Triple Palmetto Saucer ASTM/CSA-VERSION

SON.633 .03



Dimensions (l x w x h)  
 (') 3'-4" x 27'-5" x 6'-11"  
 Free height of fall  
 (') 4'-9"

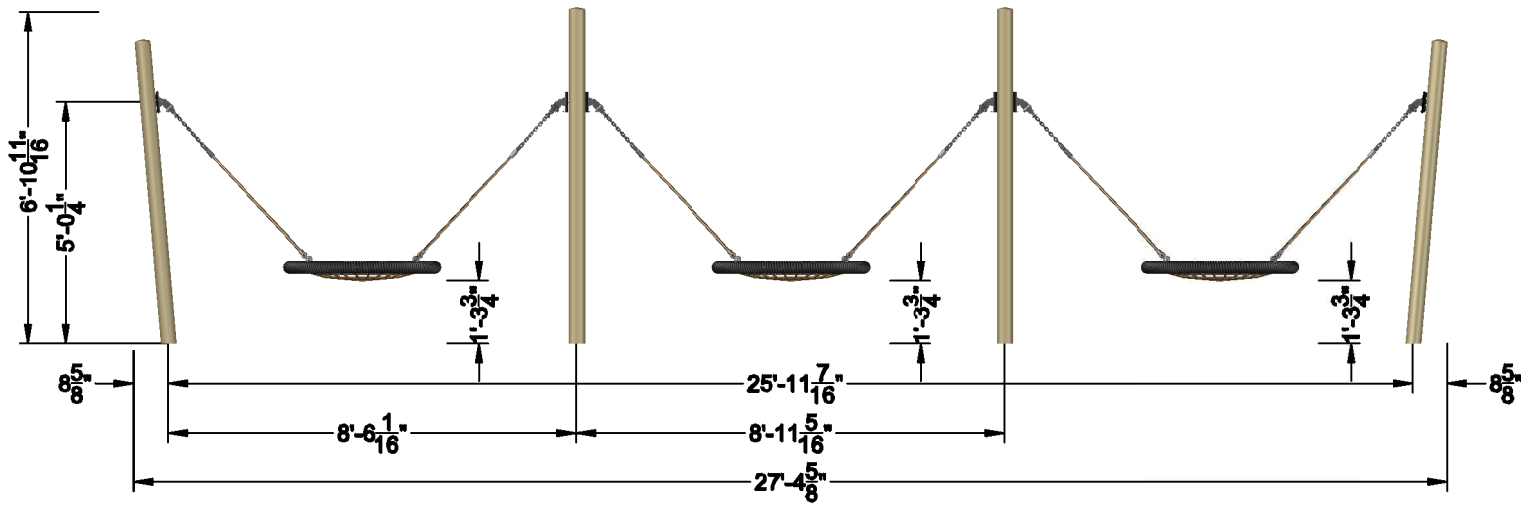
Minimum space required  
 (') 39'-5" x 19'-11"  
 Surface  
 (m<sup>2</sup>) 61,15

Format  
 Scale  
 3/16"=1'

Date  
 14.06.2018  
 Name  
 KOTTE

Change (Name)  
 1.  
 2.  
 3.  
 4.





## Triple Palmetto Saucer ASTM/CSA-VERSION

SON.633 .04



	Dimensions (l x w x h) ('-") 3'-4" x 27'-5" x 6'-11"		Free height of fall ('-") 4'-9"
	Minimum space required ('-") 39'-5" x 19'-11"		Surface (m <sup>2</sup> ) 61,15
	Format		Scale 1/4"=1'-0"
	Date 14.06.2018		Name KOTTE B. Gürr
	Change (Name) 1.22.10.2018	3.	4.

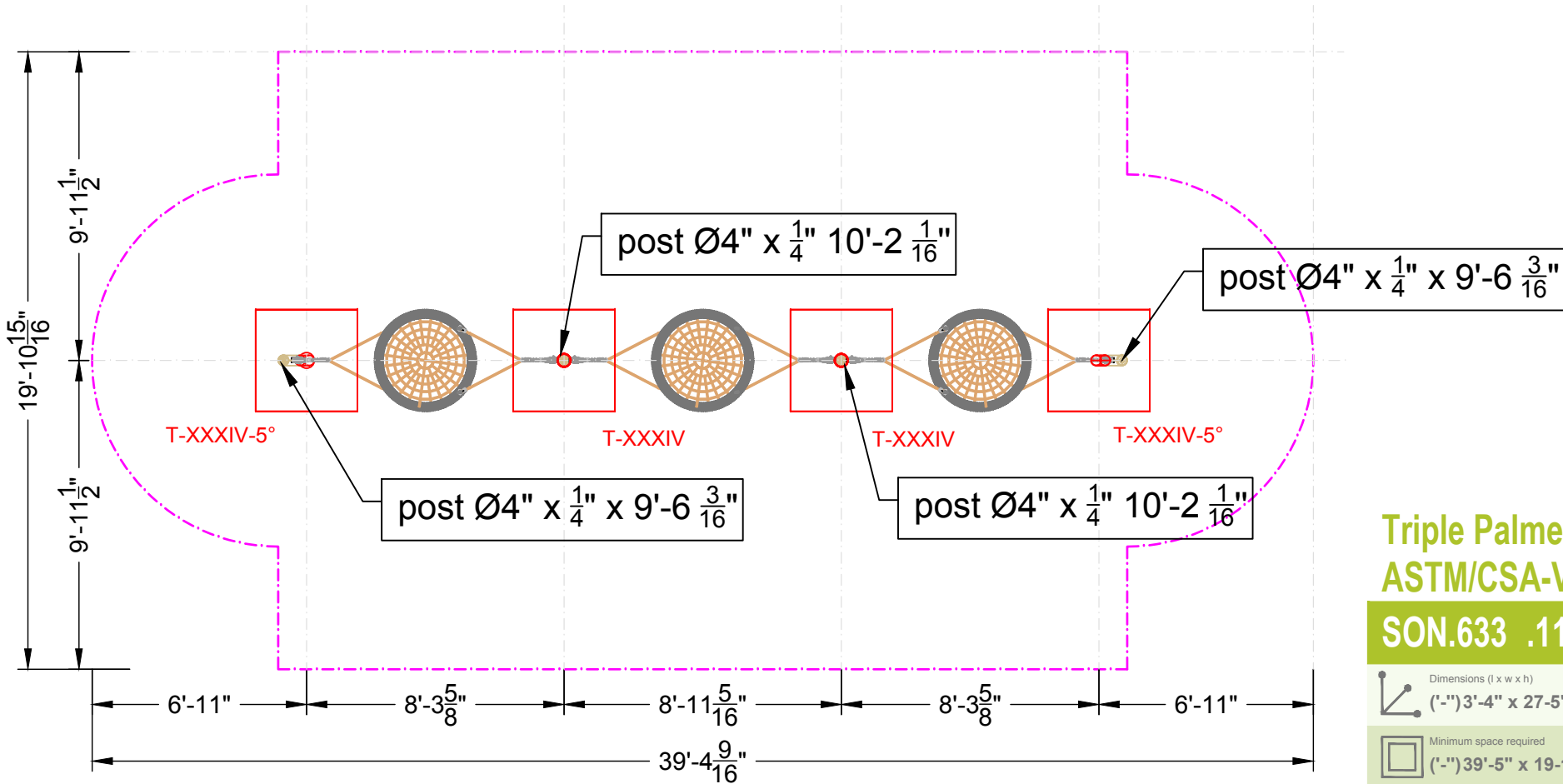




## Foundation:

Fundament/Foundation **T-XXXIV** 3'-3  $\frac{3}{8}$ " x 3'-3  $\frac{3}{8}$ " x 2'-3  $\frac{9}{16}$ "

Fundament/Foundation **T-XXXV-5°** 3'-3  $\frac{3}{8}$ " x 3'-3  $\frac{3}{8}$ " x 2'-3  $\frac{9}{16}$ "



## Triple Palmetto Saucer ASTM/CSA-VERSION

SON.633 .11



Dimensions (l x w x h) ('-") 3'-4" x 27'-5" x 6'-11" Free height of fall ('-") 4'-9"

Minimum space required ('-") 39'-5" x 19'-11" Surface (m<sup>2</sup>) 61,15

Format Scale

Date 10.31.2019 Name Fabrice

Change (Name)

1.	3.
2.	4.

Please note: Current design is for conceptual purposes only and is subject to change.

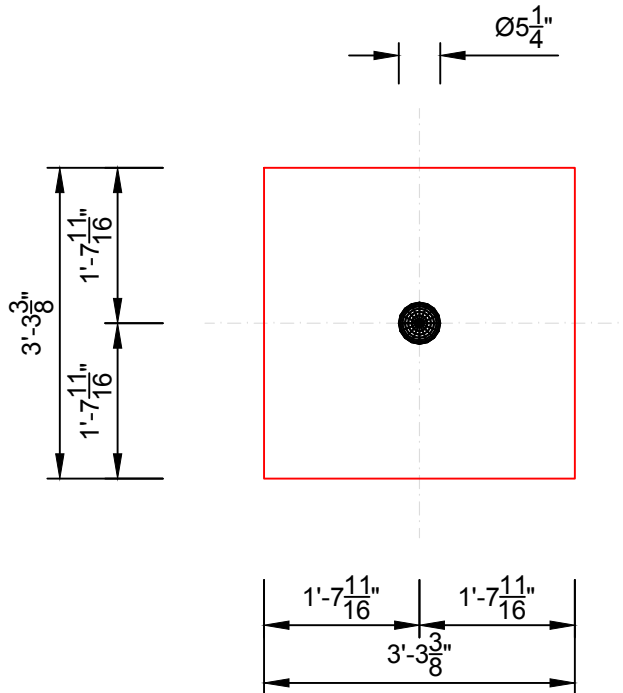
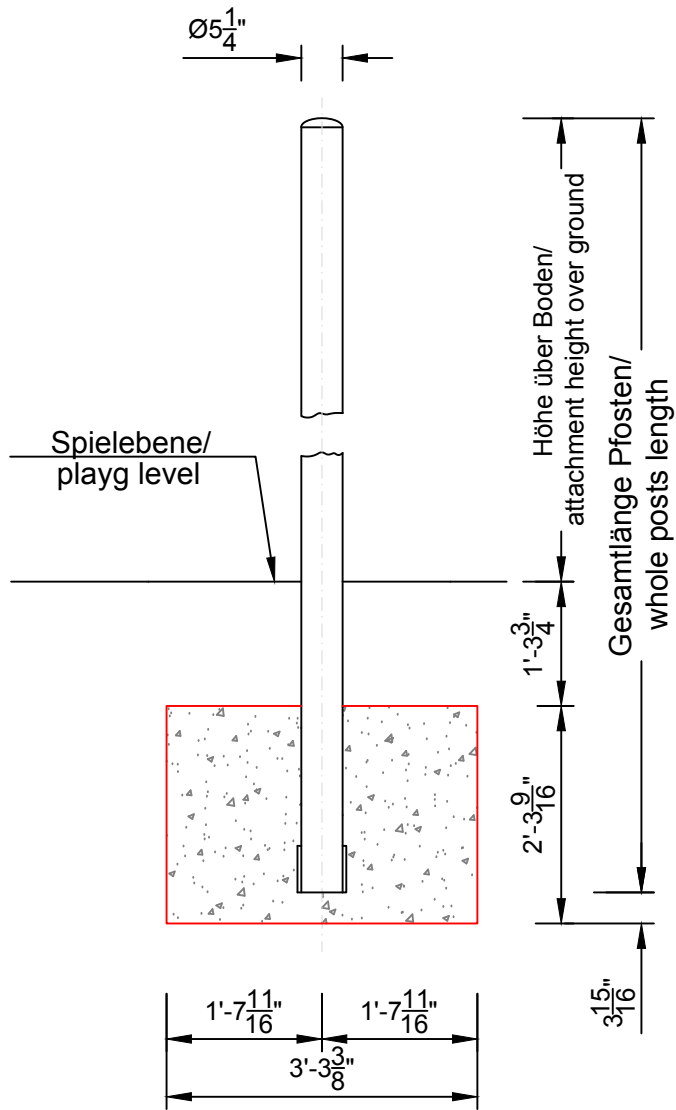
Fundament/Foundation **T-XXXIV** 3'-3 <sup>3</sup>/<sub>8</sub>" x 3'-3 <sup>3</sup>/<sub>8</sub>" x 2'-3 <sup>9</sup>/<sub>16</sub>"

**ACHTUNG:**

Die zu verwendende Mindestbetongüte beträgt C20/25!!!!

**ATTENTION:**

The minimum required concrete quality to use is C20/25 (3500psi)!!!



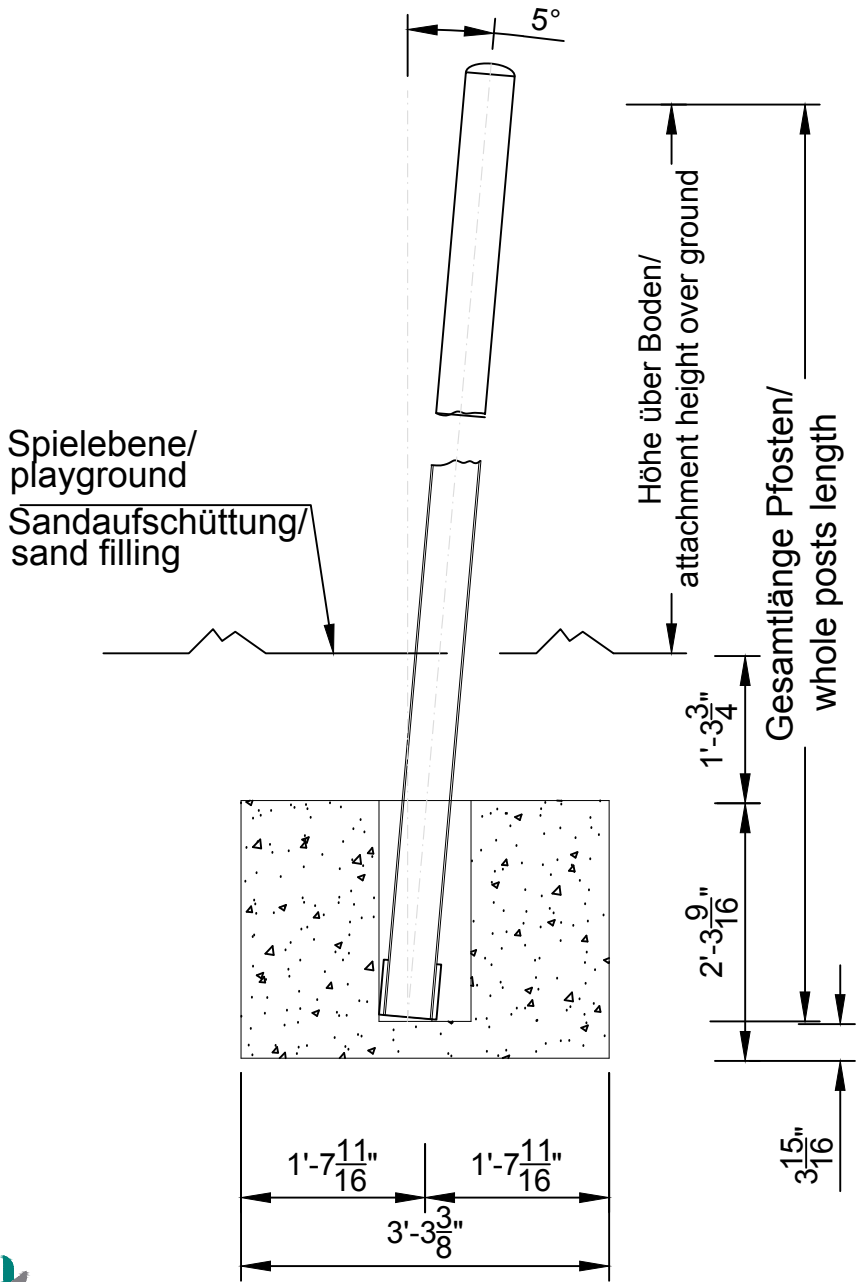
**Triple Palmetto Saucer  
ASTM/CSA-VERSION**

**SON.633 .12**



Dimensions (l x w x h) ('-") 3'-4" x 27'-5" x 6'-11"	Free height of fall ('-") 4'-9"
Minimum space required ('-") 39'-5" x 19'-11"	Surface (m <sup>2</sup> ) 61,15
Format	Scale
Date 10.31.2019	Name Fabrice
Change (Name) 1. 2.	3. 4.

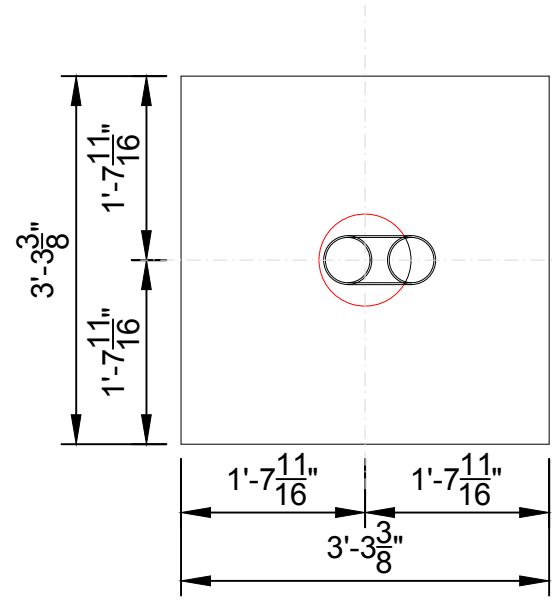
Please note: Current design is for conceptual purposes only and is subject to change.



Fundament/Foundation **T-XXXV-5°** 3'-3 <sup>3</sup>/<sub>8</sub>" x 3'-3 <sup>3</sup>/<sub>8</sub>" x 2'-3 <sup>9</sup>/<sub>16</sub>"

**ACHTUNG:**  
Die zu verwendende Mindestbetongüte beträgt  
C20/25!!!!

**ATTENTION:**  
The minimum required concrete quality to use is  
C20/25 (3500psi)!!!

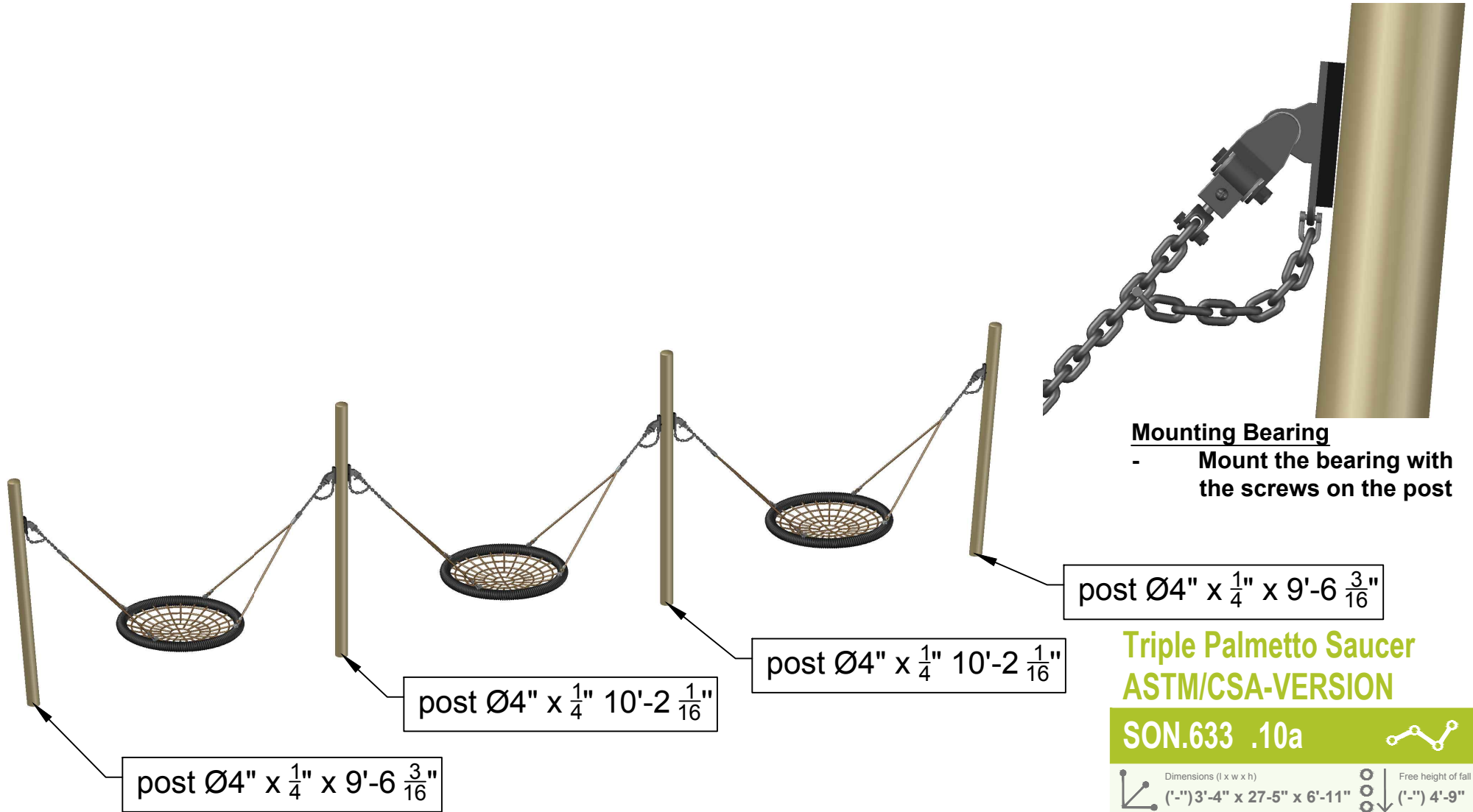


## Triple Palmetto Saucer ASTM/CSA-VERSION

**SON.633 .13**

	Dimensions (l x w x h) ('-") 3'-4" x 27-5" x 6'-11"		Free height of fall ('-") 4'-9"
	Minimum space required ('-") 39'-5" x 19'-11"		Surface (m <sup>2</sup> ) 61,15
	Format		Scale
	Date 10.31.2019		Name Fabrice
	Change (Name)		
	1.		3.
	2.		4.

Please note: Current design is for conceptual purposes only and is subject to change.



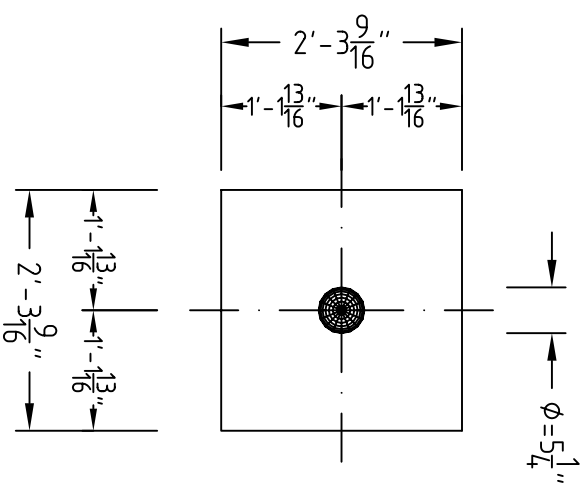
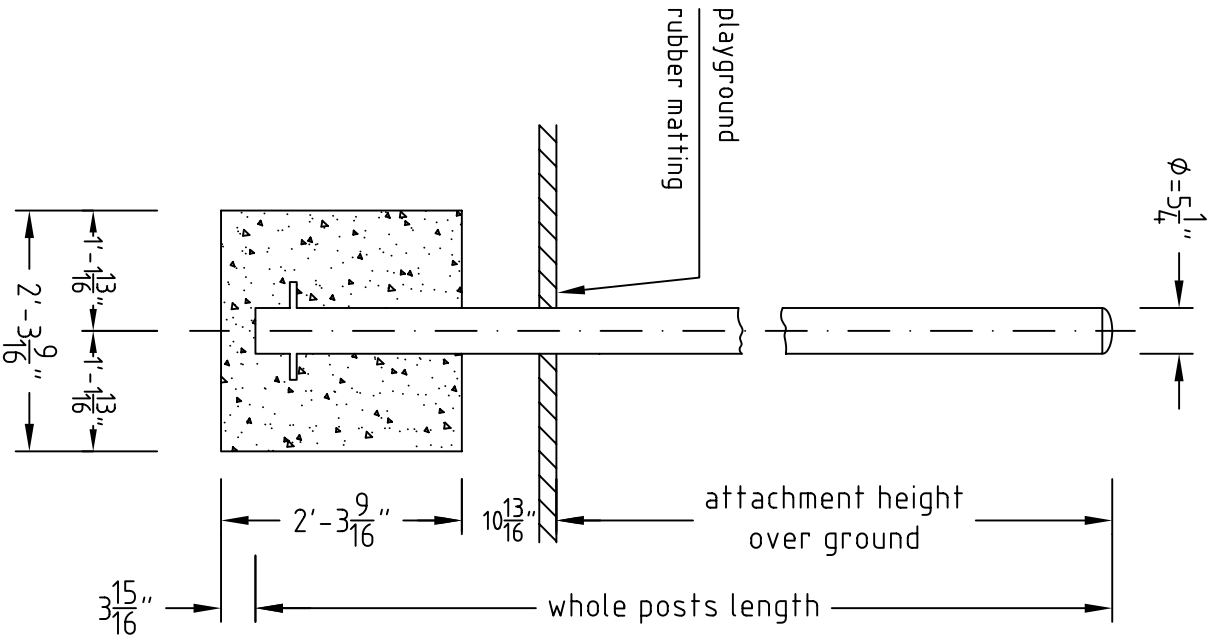
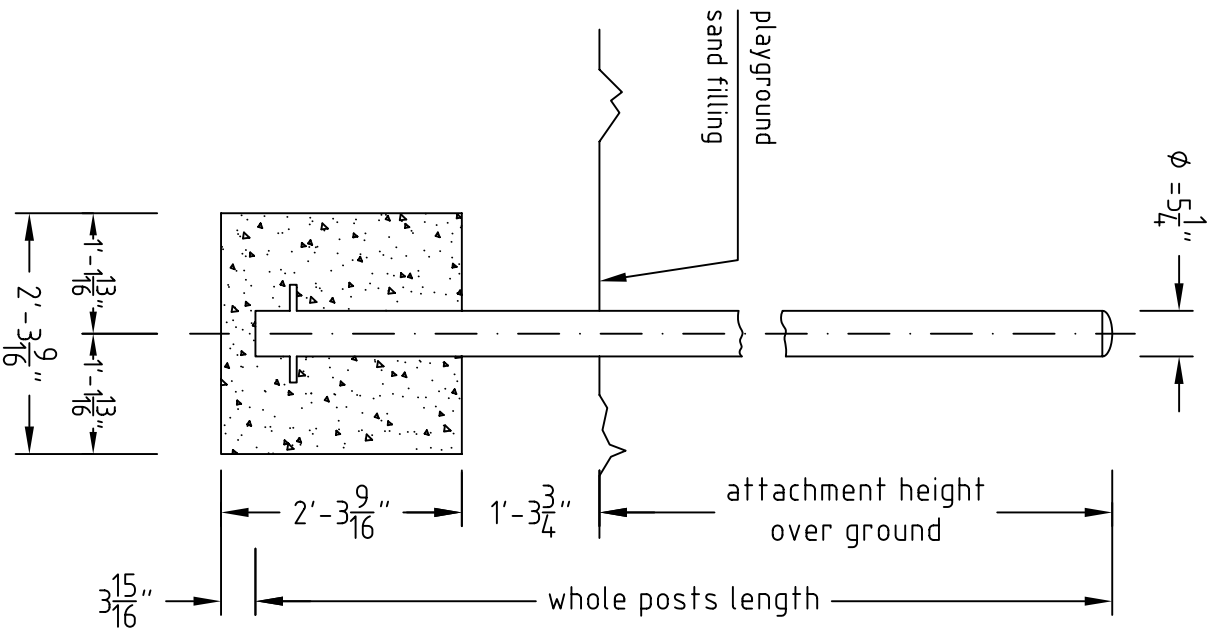
**Mounting Bearing**  
 - Mount the bearing with the screws on the post

**Triple Palmetto Saucer  
 ASTM/CSA-VERSION**

<b>SON.633 .10a</b>		
Dimensions (l x w x h) ('"-) 3'-4" x 27'-5" x 6'-11"	Free height of fall ('"-) 4'-9"	
Minimum space required ('"-) 39'-5" x 19'-11"	Surface (m <sup>2</sup> ) 61,15	
Format	Scale	
Date 10.31.2019	Name Fabrice	
Change (Name) 1. 2.	Change (Name) 3. 4.	

Please note: Current design is for conceptual purposes only and is subject to change.

# FOUNDATION VIII CONCRETE 3500PSI



<b>BERLINER</b> SELFABRIK Lengeder Str. 4 13407 Berlin Tel. 030 / 41 47 24-0			Terranos netscapes foundationplan		
2001	date	name	drawing no.	scale	
work on	19.03	Wozniak	FU.008.00	1/2"=1'	
change					