
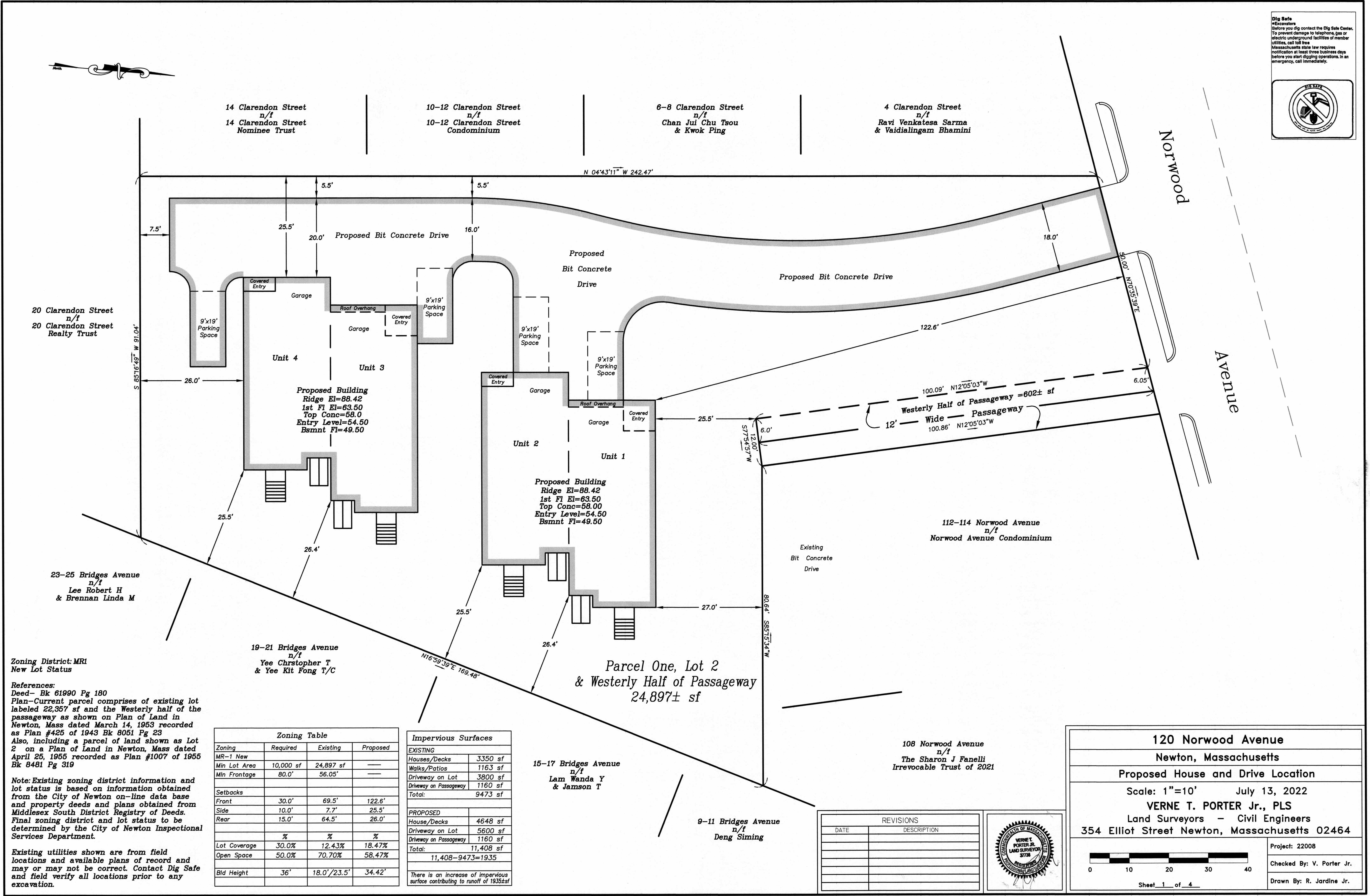


Dig Safe
 Excavators: Before you dig contact the Dig Safe Center. To prevent damage to telephone, gas or electric underground facilities of member utilities, call toll free Massachusetts state law requires notification at least three business days before you start digging operations. In an emergency, call immediately.

Zoning District: MR1
New Lot Status

References:
 Deed- Bk 61990 Pg 180
 Plan-Current parcel comprises of existing lot labeled 22,357 sf and the Westerly half of the passageway as shown on Plan of Land in Newton, Mass dated March 14, 1953 recorded as Plan #425 of 1943 Bk 8051 Pg 23
 Also, including a parcel of land shown as Lot 2 on a Plan of Land in Newton, Mass dated April 25, 1955 recorded as Plan #1007 of 1955 Bk 8481 Pg 319

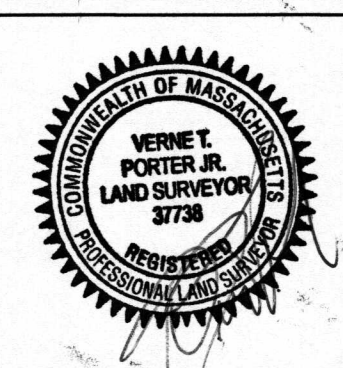
Note: Existing zoning district information and lot status is based on information obtained from the City of Newton on-line data base and property deeds and plans obtained from Middlesex South District Registry of Deeds. Final zoning district and lot status to be determined by the City of Newton Inspectional Services Department.

Existing utilities shown are from field locations and available plans of record and may or may not be correct. Contact Dig Safe and field verify all locations prior to any excavation.

Zoning Table			
Zoning	Required	Existing	Proposed
MR-1 New			
Min Lot Area	10,000 sf	24,897 sf	---
Min Frontage	80.0'	56.05'	---
Setbacks			
Front	30.0'	69.5'	122.6'
Side	10.0'	7.7'	25.5'
Rear	15.0'	64.5'	26.0'
%			
Lot Coverage	30.0%	12.43%	18.47%
Open Space	50.0%	70.70%	58.47%
Bld Height	36'	18.0'/23.5'	34.42'

Impervious Surfaces	
EXISTING	
Houses/Decks	3350 sf
Walks/Patios	1163 sf
Driveway on Lot	3800 sf
Driveway on Passageway	1160 sf
Total:	9473 sf
PROPOSED	
House/Decks	4648 sf
Driveway on Lot	5600 sf
Driveway on Passageway	1160 sf
Total:	11,408 sf
11,408-9473=1935	
There is an increase of impervious surface contributing to runoff of 1935±sf	

REVISIONS	
DATE	DESCRIPTION



120 Norwood Avenue
 Newton, Massachusetts
 Proposed House and Drive Location

Scale: 1"=10' July 13, 2022
 VERNE T. PORTER Jr., PLS
 Land Surveyors - Civil Engineers
 354 Elliot Street Newton, Massachusetts 02464

Project: 22008
 Checked By: V. Porter Jr.
 Drawn By: R. Jardine Jr.

Sheet 1 of 4