



ASSOCIATES
LANDSCAPE ARCHITECTURE AND PLANNING
144 Moseley Street, Building 4
Waltham, MA 02453-5332
ph: 781-314-0401
www.ryan-assoc.com



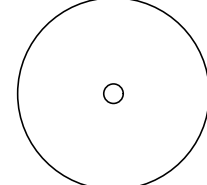
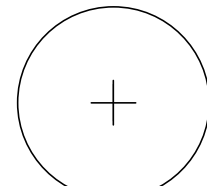
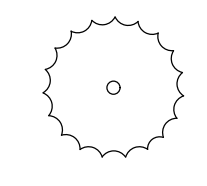
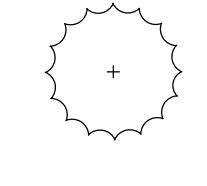
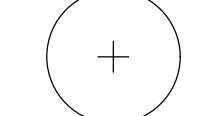
Walker Center
144 Hancock Street
Newton MA

Planting Plan
SCALE: 1" = 20'-0"

ISSUED	DATE	DESCRIPTION
1	04-11-2022	PLANTING PLAN
2	06-29-2022	PLANTING PLAN
3		
4		
5		
6		

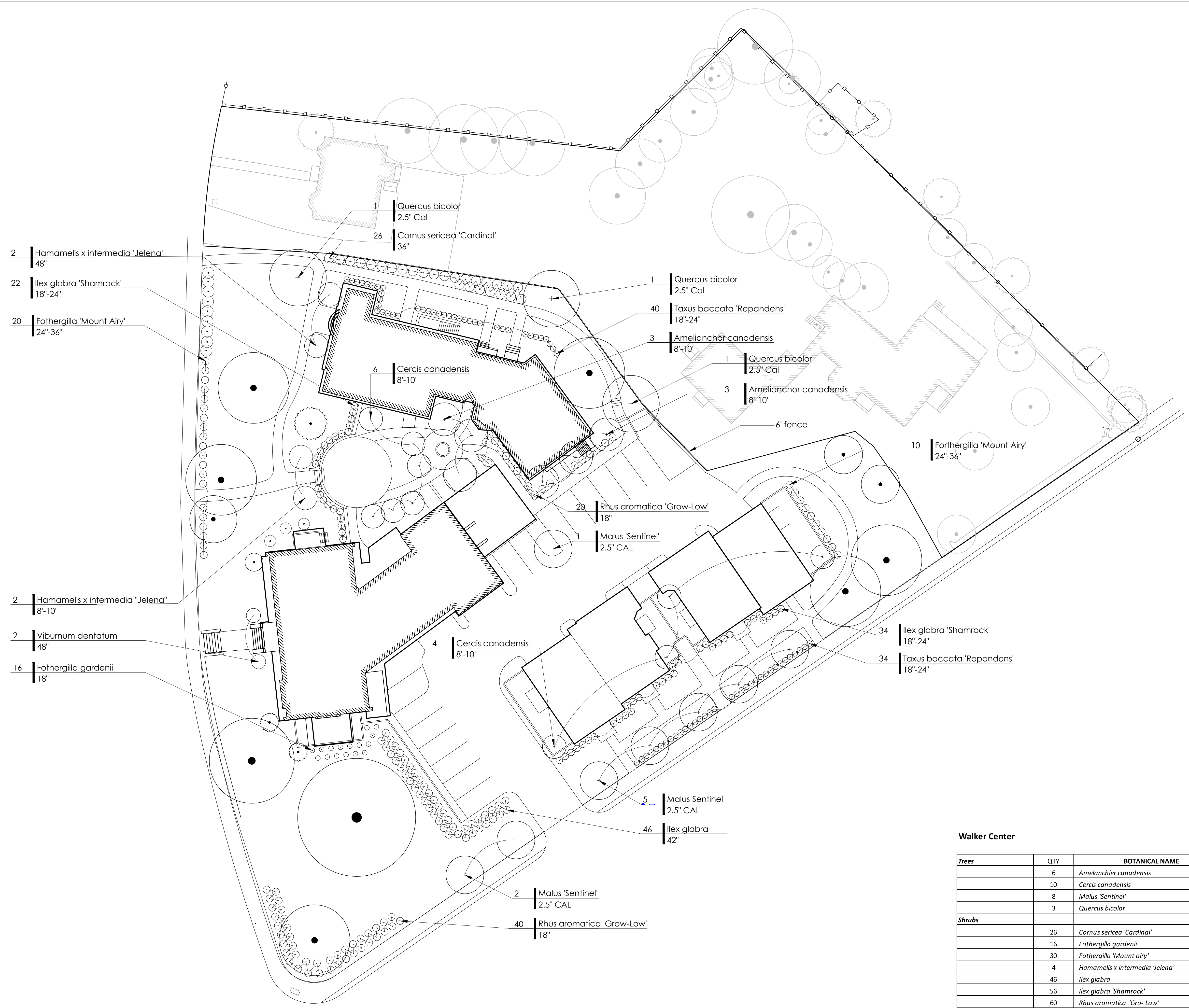
L-1.0

LEGEND

-  EXISTING TREE
-  PROPOSED TREE
-  EXISTING EVERGREEN SHRUB
-  PROPOSED EVERGREEN SHRUB
-  PROPOSED DECIDUOUS SHRUB

NOTES

1. EXISTING PLANTING WILL BE TAGGED IN FIELD FOR PROTECTION OR REMOVAL BY LANDSCAPE ARCHITECT.
2. FINAL SELECTION AND PLACEMENT SUBJECT TO CHANGE.



Walker Center

Trees	QTY	BOTANICAL NAME	COMMON NAME	SIZE	NOTES
	6	<i>Amelanchier canadensis</i>	Amelanchier	8-10'	multistemmed
	10	<i>Cercis canadensis</i>	Redbud	8-10'	native
	8	<i>Malus 'Sentinel'</i>	Sentinel Flowering Crab Apple	2.5" cal	under powerlines
	3	<i>Quercus bicolor</i>	Swamp White Oak	2.5" cal	native
Shrubs					
	26	<i>Cornus sericea 'Cardinal'</i>	Red Twig Dogwood	36"	winter interest
	16	<i>Fothergilla gardenii</i>	Dwarf Fothergilla	18"	native
	30	<i>Fothergilla 'Mount airy'</i>	Mount Airy	24"-36"	
	4	<i>Hamamelis x intermedia 'Jelena'</i>	Witch Hazel	48"	winter interest
	46	<i>Ilex glabra</i>	Inkberry	42"	native
	56	<i>Ilex glabra 'Shamrock'</i>	Inkberry	18"	native
	60	<i>Rhus aromatica 'Gro-Low'</i>	Frangrant Sumac - Grow Low	18"	native
	74	<i>Taxus baccata 'Repandens'</i>	English Yew	18"-24"	evergreen
	2	<i>Viburnum dentatum</i>	Arrowwood Viburnum	48"	native

