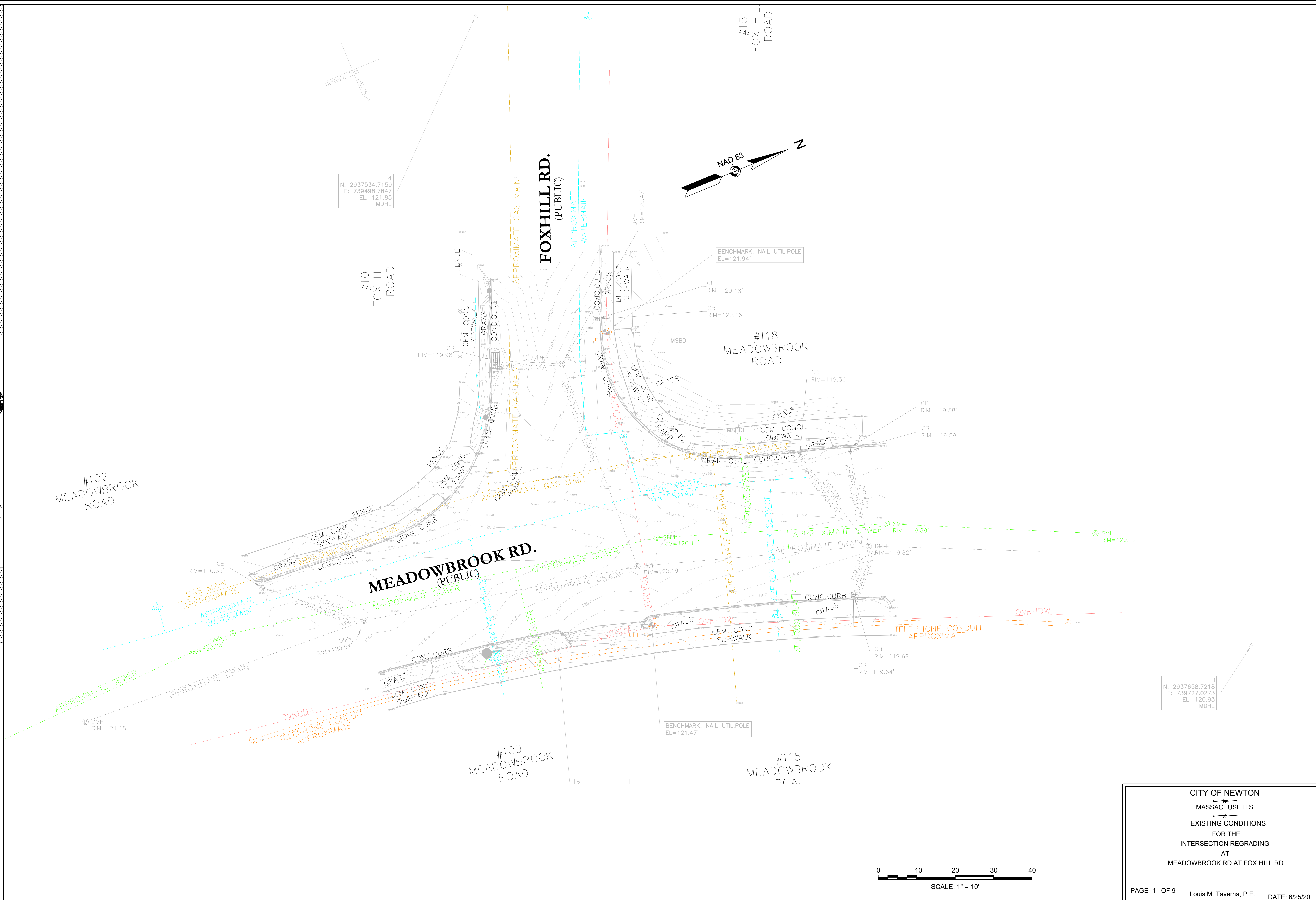


DESIGNED BY: A.VARGAS
 DESIGN DRAFTED BY: M.PANZA
 CHECKED BY: J.DAGHIAN
 APPROVED BY: L.TAVERNA

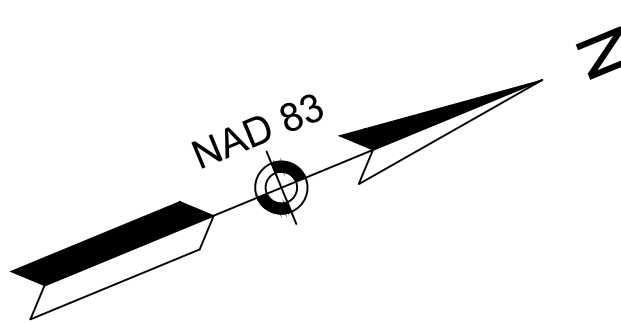
SURVEYED BY: P.HIGGINS
 BASE MAP DRAFTED BY: P.HIGGINS



CITY OF NEWTON
 MASSACHUSETTS



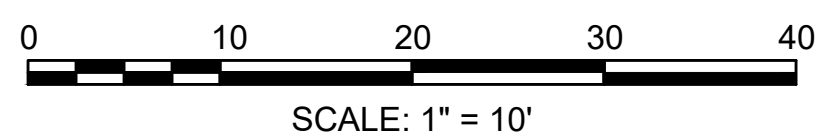
4
 N: 2937534.7159
 E: 739498.7847
 EL: 121.85
 MDHL



BENCHMARK: NAIL UTIL.POLE
 EL=121.47'

BENCHMARK: NAIL UTIL.POLE
 EL=121.94'

1
 N: 2937658.7218
 E: 739727.0273
 EL: 120.93
 MDHL



CITY OF NEWTON
 MASSACHUSETTS
 EXISTING CONDITIONS
 FOR THE
 INTERSECTION REGRADING
 AT
 MEADOWBROOK RD AT FOX HILL RD

PAGE 1 OF 9
 Louis M. Taverna, P.E. DATE: 6/25/20

PAVEMENT NOTES

PROPOSED FULL DEPTH PAVEMENT

SURFACE: 1.5" SUPERPAVE SURFACE COURSE-12.5 (SSC-12.5) OVER
 BASE: 3" SUPERPAVE INTERMEDIATE COURSE-19.0 (SIC-19.0) OVER
 ++SUBBASE: 12" GRAVEL BORROW, TYPE B

PROPOSED PAVEMENT MILLING AND OVERLAY

MILLING: 1.5" PAVEMENT MILLING
 SURFACE: 1.5" SUPERPAVE SURFACE COURSE - 12.5 (SSC - 12.5)

PROPOSED HMA DRIVEWAY

SURFACE: 1.5" SUPERPAVE SURFACE COURSE - 12.5 (SSC - 12.5) OVER
 2" SUPERPAVE INTERMEDIATE COURSE - 19.0 (SIC - 19.0)
 ++SUBBASE: 8" GRAVEL BORROW TYPE B

PROPOSED CEMENT CONCRETE DRIVEWAY APRON

SURFACE: 6" CEMENT CONCRETE WITH LAMPBLACK 2LB/CF EMULSIFIED
 7% AIR ENTRAINED 4000 PSI, 3/4", 610 (PER MASSDOT STD SPEC M4.02.00)
 ++SUBBASE: 8" GRAVEL BORROW, TYPE b.
 2" DENSE GRADED CRUSHED STONE TO LEVEL

PROPOSED CEMENT CONCRETE SIDEWALK

SURFACE: 4" CEMENT CONCRETE WITH LAMPBLACK 2LB/CF EMULSIFIED
 7% AIR ENTRAINED 4000 PSI, 3/4", 610 (PER MASSDOT STD SPEC M4.02.00)
 ++SUBBASE: 6" GRAVEL BORROW, TYPE b.
 2" DENSE GRADED CRUSHED STONE TO LEVEL

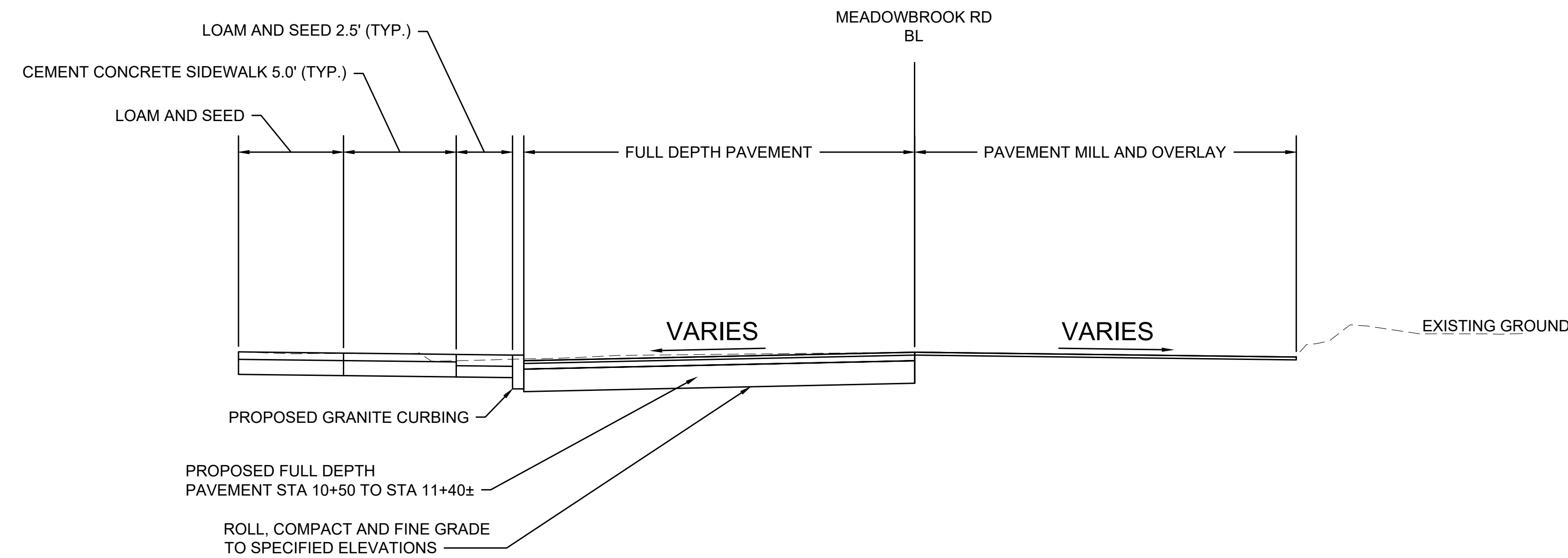
PROPOSED CEMENT CONCRETE PEDESTRIAN RAMP

SURFACE: 8" CEMENT CONCRETE WITH LAMPBLACK 2LB/CF EMULSIFIED
 7% AIR ENTRAINED 4000 PSI, 3/4", 610 (PER MASSDOT STD SPEC M4.02.00)
 ++SUBBASE: 6" GRAVEL BORROW, TYPE b.
 2" DENSE GRADED CRUSHED STONE TO LEVEL

PROPOSED GRASS STRIP / LOAM AND SEED

SURFACE: 6" LOAM AND SEED
 ++SUBBASE: 6" BANK GRAVEL, TYPE a.

++ WHERE EXISTING GRAVEL IS FOUND TO BE SUITABLE, THE EXISTING GRAVEL
 MAY BE USED IN PROPOSED SUBBASE, AFTER APPROVAL BY THE ENGINEER.



TYPICAL SECTION
 MEADOWBROOK RD.
 STA 10+25 TO 11+63±
 NTS

GENERAL NOTES:

1. LOAM AND SEED ON THE AREAS INDICATED ON THE PLANS, OR AS DESIGNATED BY THE ENGINEER, SHALL BE DONE IN ACCORDANCE WITH SECTION 751 LOAM BORROW AND TOPSOIL REHANDLED AND SPREAD OF THE MASSDOT STANDARD SPECIFICATIONS AND SUPPLEMENTAL SPECIFICATIONS.
2. THE LOCATIONS OF EXISTING UNDERGROUND UTILITIES ARE SHOWN IN AN APPROXIMATE WAY ONLY AND HAVE NOT BEEN INDEPENDENTLY VERIFIED. THE CREW PERFORMING THE WORK SHALL DETERMINE THE EXACT LOCATION OF ALL EXISTING UTILITIES BEFORE COMMENCING WORK. THE CREW PERFORMING THE WORK SHALL CONTACT DIGSAFE TO REQUEST EXISTING UTILITY MARKOUT IN THE FIELD.
3. THE CREW PERFORMING THE WORK SHALL MAKE ALL ARRANGEMENTS FOR THE ALTERATION AND ADJUSTMENT OF GAS AND ANY OTHER PRIVATE UTILITIES BY THE UTILITY COMPANIES.
4. THE TERM "PROPOSED" (PROP) MEANS WORK TO BE CONSTRUCTED USING NEW MATERIALS OR, WHERE APPLICABLE, RE-USING EXISTING MATERIALS IDENTIFIED AS "REMOVE AND RESET" (R&R).
5. THE CREW PERFORMING THE WORK SHALL ESTABLISH ALL REQUIRED EROSION CONTROL MEASURES.
6. THE CREW PERFORMING THE WORK SHALL ESTABLISH ALL REQUIRED TEMPORARY TRAFFIC CONTROL MEASURES, INCLUDING ALL CONSTRUCTION SIGNING, TEMPORARY TRAFFIC CONTROL DEVICES, TEMPORARY MARKINGS, ROADSIDE ELEMENTS AND POLICE DETAILS.
7. ALL EXISTING GRANITE CURB REMOVED WITHIN THE LIMITS OF WORK AND IN SUITABLE CONDITION AS DETERMINED BY THE ENGINEER, SHALL BE RE-USED IN THE PROPOSED WORK, EXCEPT CURVED STONES OF DIFFERENT RADIUS THAN PROPOSED CURB. ALL CURB NOT USED SHALL BE REMOVED AND DISCARDED.

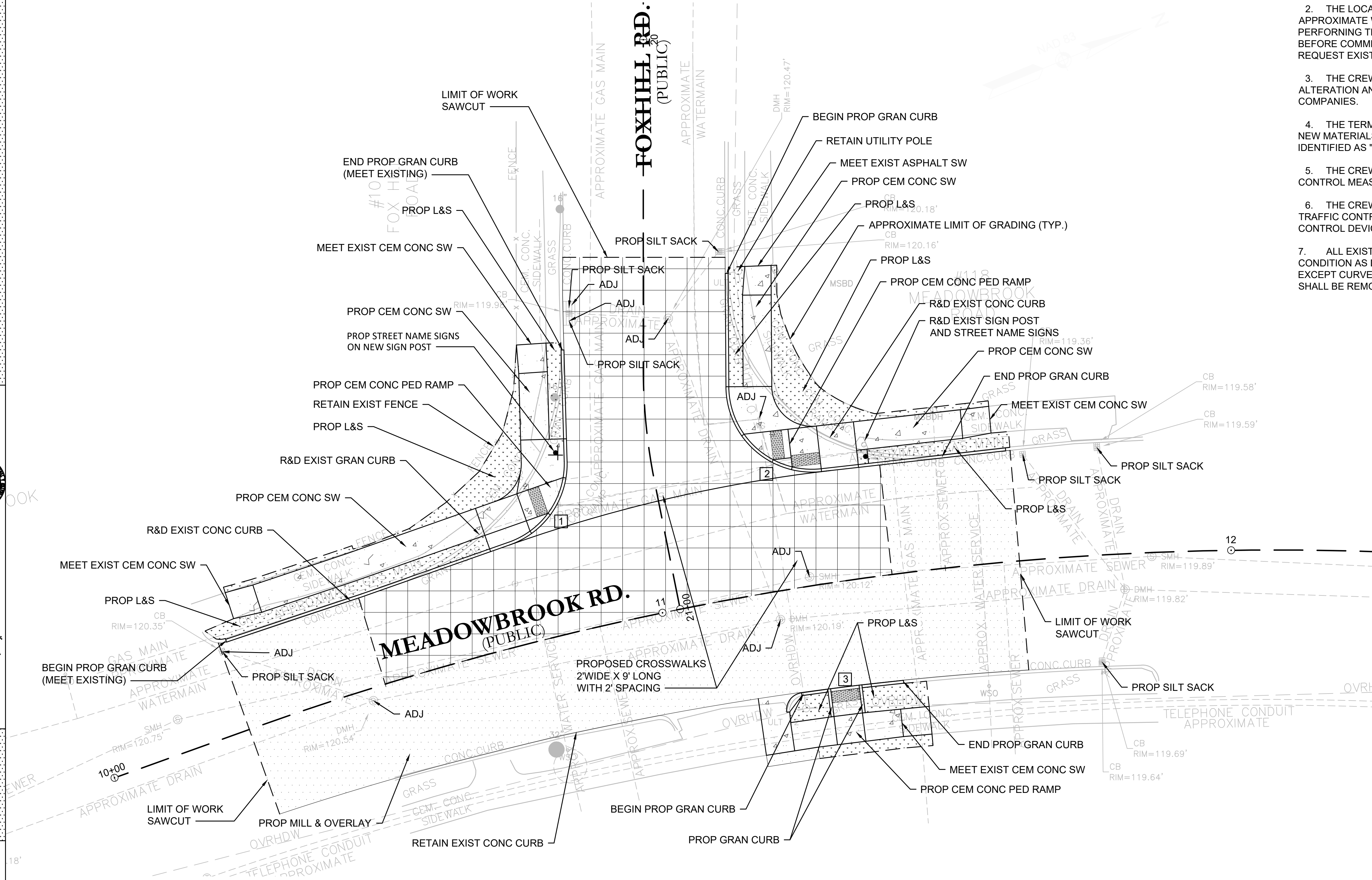
PROP PED CROSSING WARNING SIGNAGE ON NEW SIGN POST (W11-2) (W16-7pL)



CROSSWALK EXHIBIT

PROP PED CROSSING WARNING SIGNAGE ON EXIST UP (W11-2) (W16-7pL)

CITY OF NEWTON MASSACHUSETTS
 DESIGNED BY: A. VARGAS
 DESIGN DRAFTED BY: M. PANZA
 CHECKED BY: J. DACHIAN
 APPROVED BY: L. TAVERNA
 SURVEYED BY: P. HIGGINS
 BASE MAP DRAFTED BY: P. HIGGINS

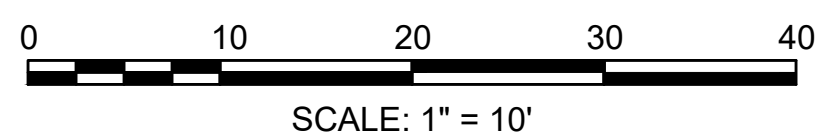


LEGEND:

	PROPOSED LOAM AND SEED / GRASS STRIP		PROPOSED HOT MIX ASPHALT
	PROPOSED CEMENT CONCRETE		PROPOSED CEMENT CONCRETE RAMP NUMBER
	PROPOSED FULL DEPTH PAVEMENT		

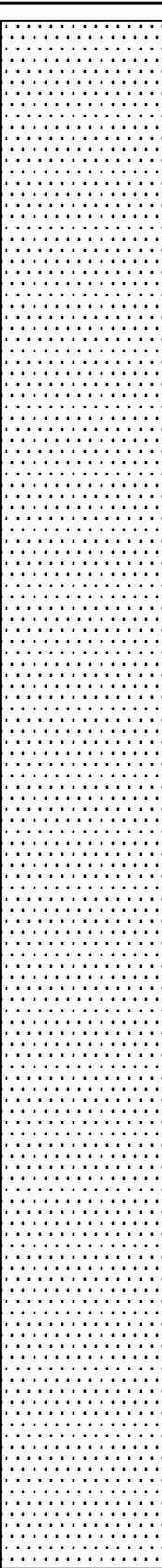
ABBREVIATIONS

ADJ	ADJUST
CEM	CEMENT
CONC	CONCRETE
EXIST	EXISTING
GRAN	GRANITE
L&S	LOAM AND SEED
PED	PEDESTRIAN
PROP	PROPOSED
R&D	REMOVE AND DISCARD
R&R	REMOVE AND RESET
SW	SIDEWALK
TYP	TYPICAL



CITY OF NEWTON
 MASSACHUSETTS
 CONSTRUCTION PLAN
 FOR THE
 INTERSECTION REGRADING
 AT
 MEADOWBROOK RD AT FOX HILL RD

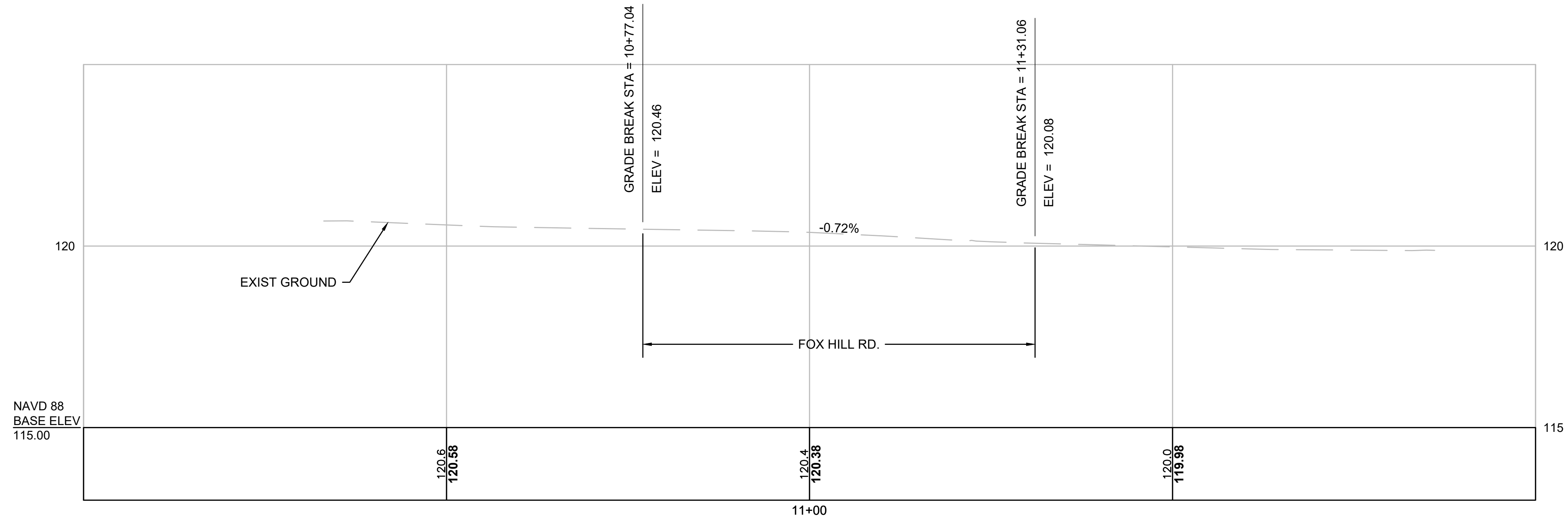
PAGE 3 OF 9 Louis M. Taverna, P.E. DATE: 6/25/20



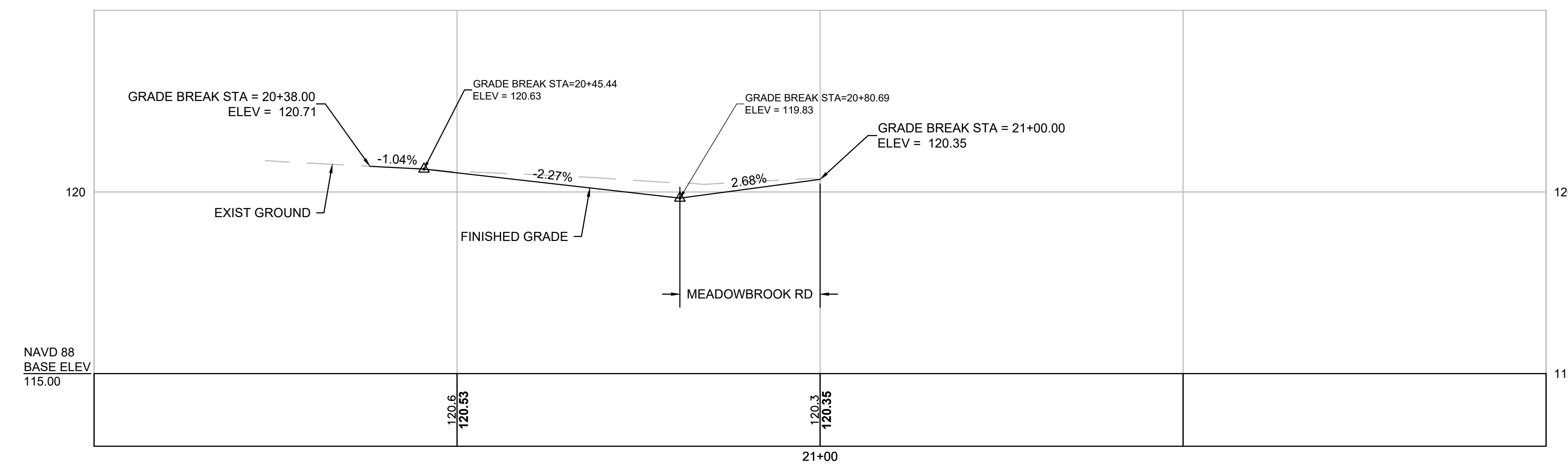
CITY OF NEWTON
MASSACHUSETTS

DESIGNED BY: A.VARGAS
DESIGN DRAFTED BY: M.PANZA
CHECKED BY: J.DAGHIAN
APPROVED BY: L.TAVERNA

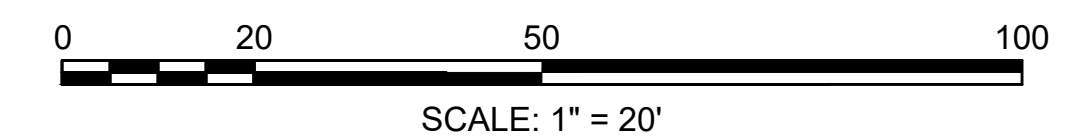
SURVEYED BY: P.HIGGINS
BASE MAP DRAFTED BY: P.HIGGINS



ALIGNMENT - MEADOWBROOK RD CL



ALIGNMENT - FOX HILL RD CL



CITY OF NEWTON
MASSACHUSETTS
PROFILES
FOR THE
INTERSECTION REGRADING
AT
MEADOWBROOK RD AT FOX HILL RD

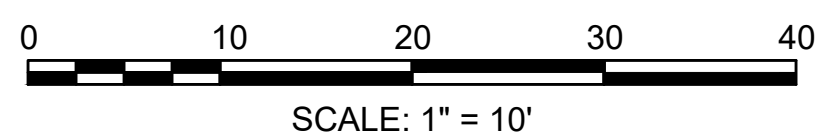
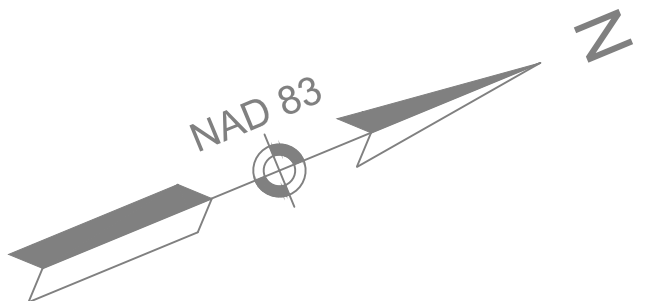
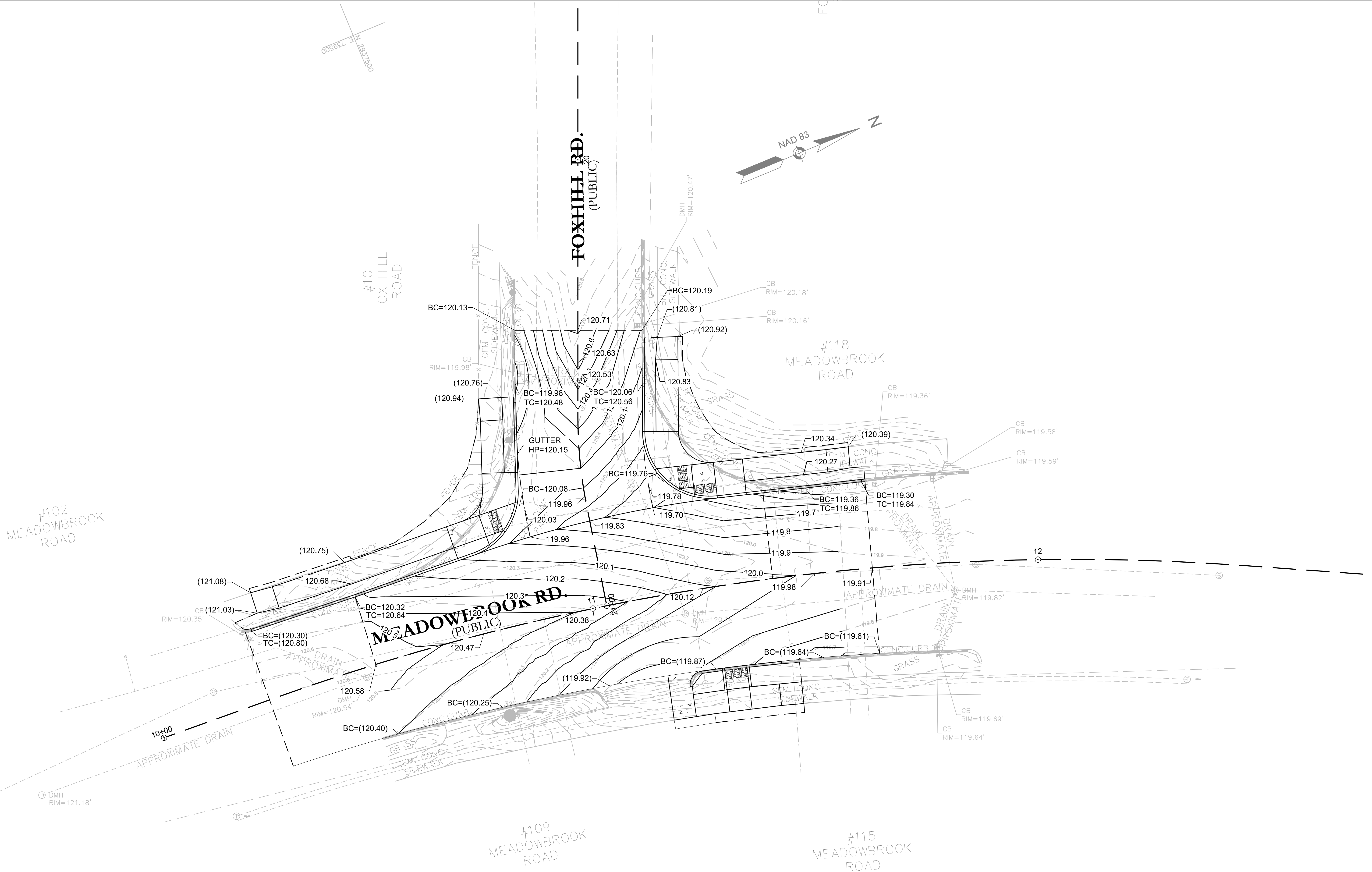


CITY OF NEWTON
MASSACHUSETTS

DESIGNED BY: A. VARGAS
 DESIGN DRAFTED BY: M. PANZA
 CHECKED BY: J. D'AGLIAN
 APPROVED BY: L. TAVERNA

FOX LANE

LEGEND:
 ~ 132.80 PROPOSED SPOT ELEVATION
 - (132.80) EXISTING SPOT ELEVATION



CITY OF NEWTON
 MASSACHUSETTS
 GRADING PLAN
 FOR THE
 INTERSECTION REGRADING
 AT
 MEADOWBROOK RD AT FOX HILL RD

PAGE 5 OF 9 Louis M. Taverna, P.E. DATE: 6/25/20

DESIGNED BY: A.VARGAS
 DESIGN DRAFTED BY: M.PANZA
 CHECKED BY: J.DAGHIAN
 APPROVED BY: L.TAVERNA

SURVEYED BY: P.HIGGINS
 BASE MAP DRAFTED BY: P.HIGGINS

CITY OF NEWTON
 MASSACHUSETTS

FOX LANE

ABBREVIATIONS

AP ANGLE POINT
 BM BENCHMARK
 DHSB DRILL HOLE STONE BOUND
 TRAV TRAVERSE
 EL ELEVATION
 PC POINT OF CURVATURE
 TRAV TRAVERSE

ALIGNMENT - MEADOWBROOK RD CL CONSTRUCTION BASELINE DATA

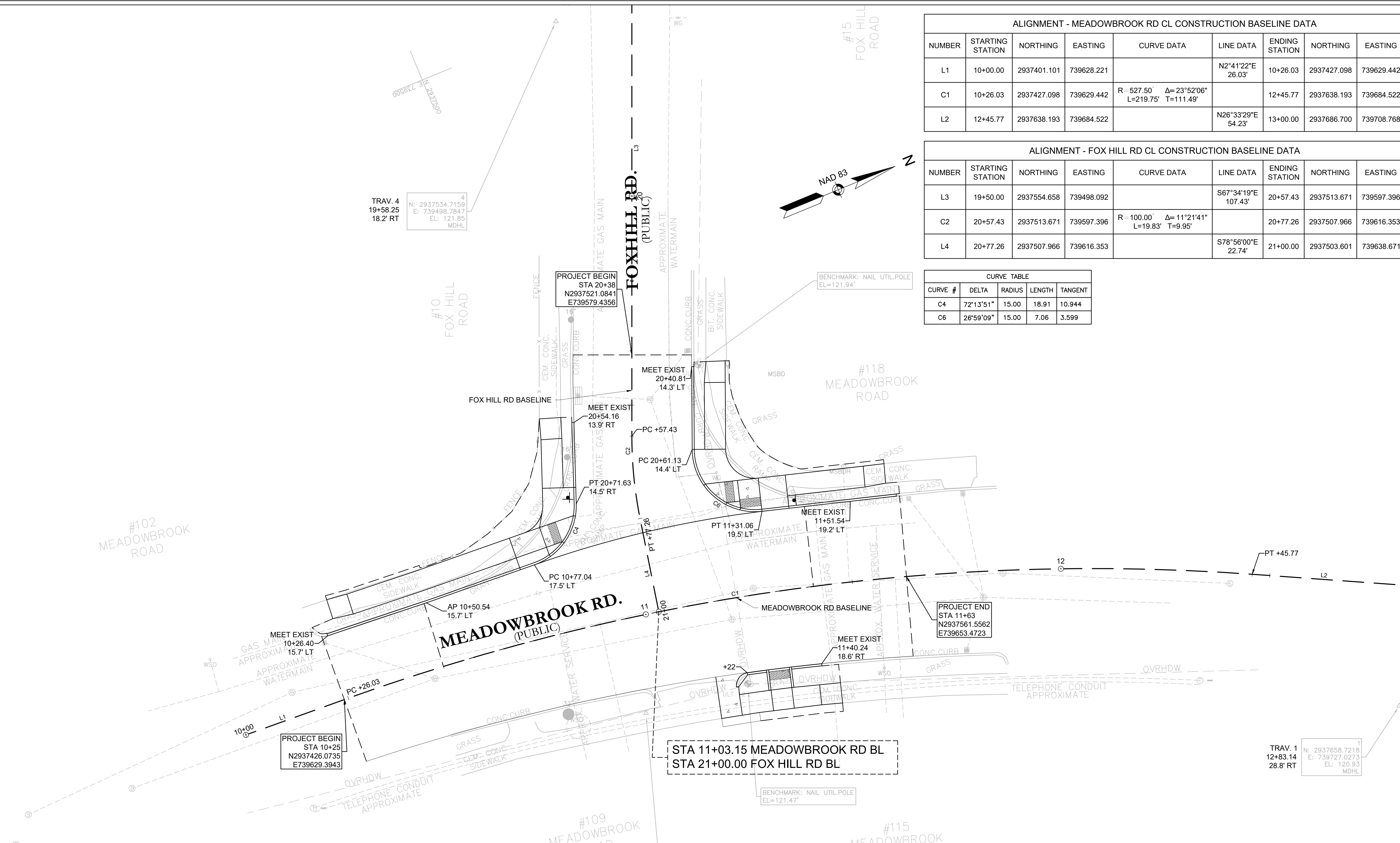
NUMBER	STARTING STATION	NORTHING	EASTING	CURVE DATA	LINE DATA	ENDING STATION	NORTHING	EASTING
L1	10+00.00	2937401.101	739628.221		N2°41'22"E 26.03'	10+26.03	2937427.098	739629.442
C1	10+26.03	2937427.098	739629.442	R=527.50' Δ=23°52'06" L=219.75' T=111.49'		12+45.77	2937638.193	739684.522
L2	12+45.77	2937638.193	739684.522		N26°33'29"E 54.23'	13+00.00	2937686.700	739708.768

ALIGNMENT - FOX HILL RD CL CONSTRUCTION BASELINE DATA

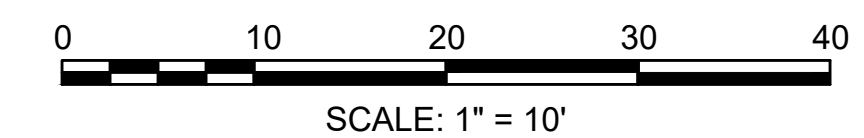
NUMBER	STARTING STATION	NORTHING	EASTING	CURVE DATA	LINE DATA	ENDING STATION	NORTHING	EASTING
L3	19+50.00	2937554.658	739498.092		S67°34'19"E 107.43'	20+57.43	2937513.671	739597.396
C2	20+57.43	2937513.671	739597.396	R=100.00' Δ=11°21'41" L=19.83' T=9.95'		20+77.26	2937507.966	739616.353
L4	20+77.26	2937507.966	739616.353		S78°56'00"E 22.74'	21+00.00	2937503.601	739638.671

CURVE TABLE

CURVE #	DELTA	RADIUS	LENGTH	TANGENT
C4	72°13'51"	15.00	18.91	10.944
C6	26°59'09"	15.00	7.06	3.599



STA 11+03.15 MEADOWBROOK RD BL
 STA 21+00.00 FOX HILL RD BL



CITY OF NEWTON
 MASSACHUSETTS
 ALIGNMENT PLAN
 FOR THE
 INTERSECTION REGRADING
 AT
 MEADOWBROOK RD AT FOX HILL RD

DESIGNED BY: A.VARGAS
 DESIGN DRAFTED BY: M.PANZA
 CHECKED BY: J.DAGHIAN
 APPROVED BY: L.TAVERNA

SURVEYED BY: P.HIGGINS
 BASE MAP DRAFTED BY: P.HIGGINS

CITY OF NEWTON
 MASSACHUSETTS

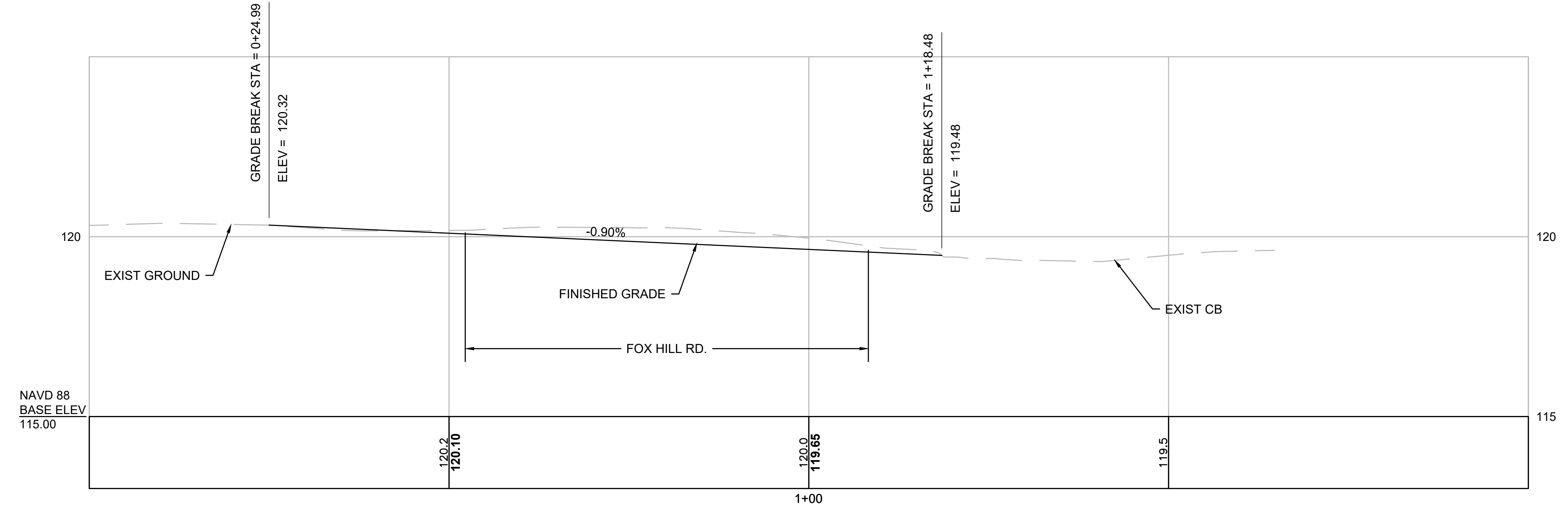


FOX LANE

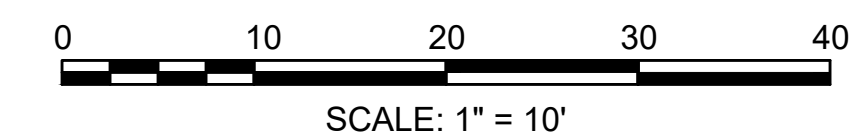
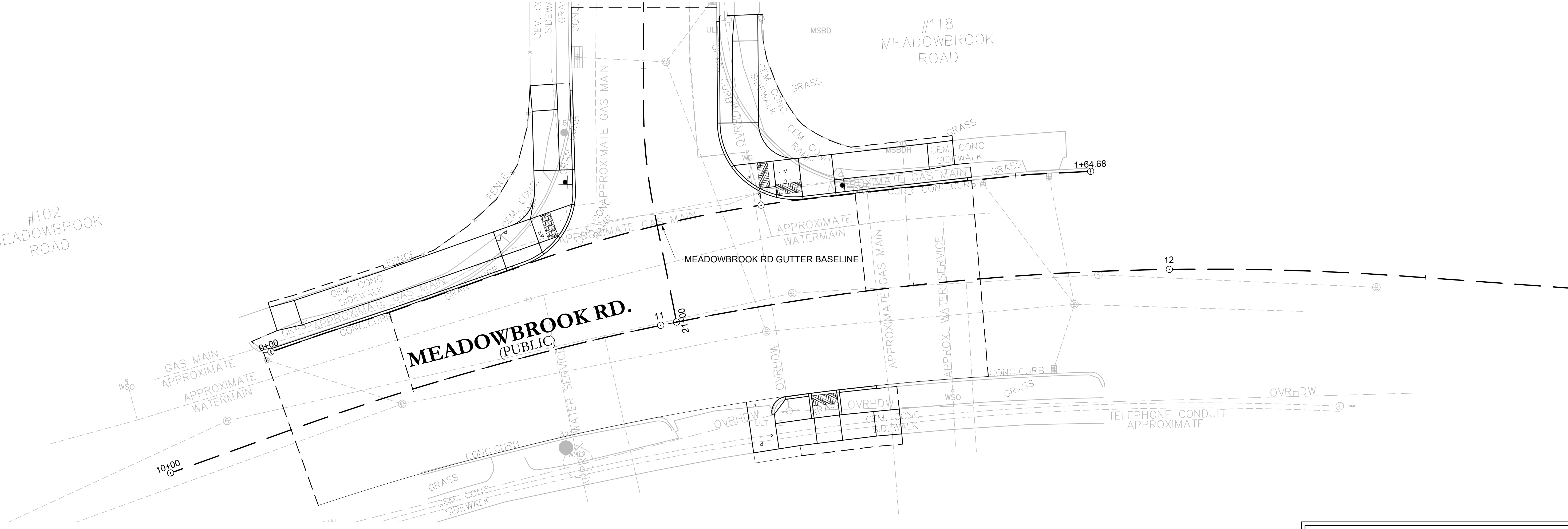
#102 MEADOWBROOK ROAD

#118 MEADOWBROOK ROAD

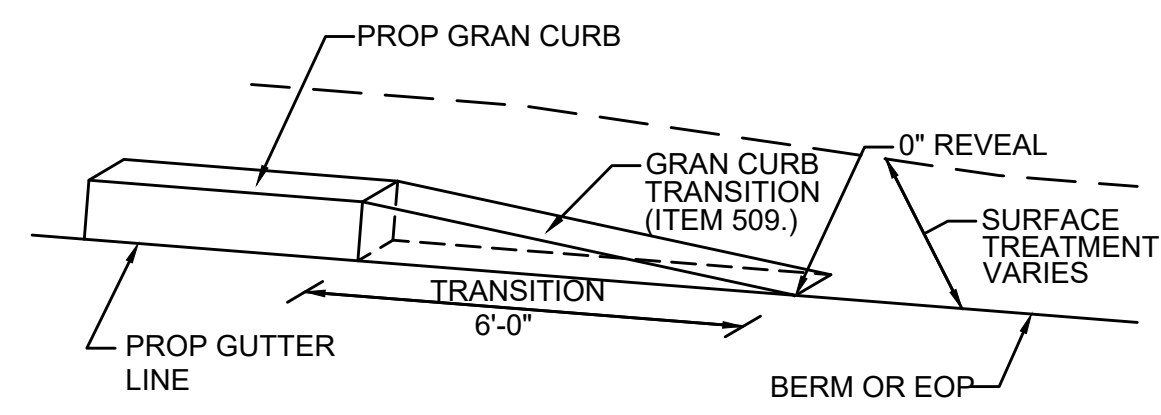
MEADOWBROOK RD.
 (PUBLIC)



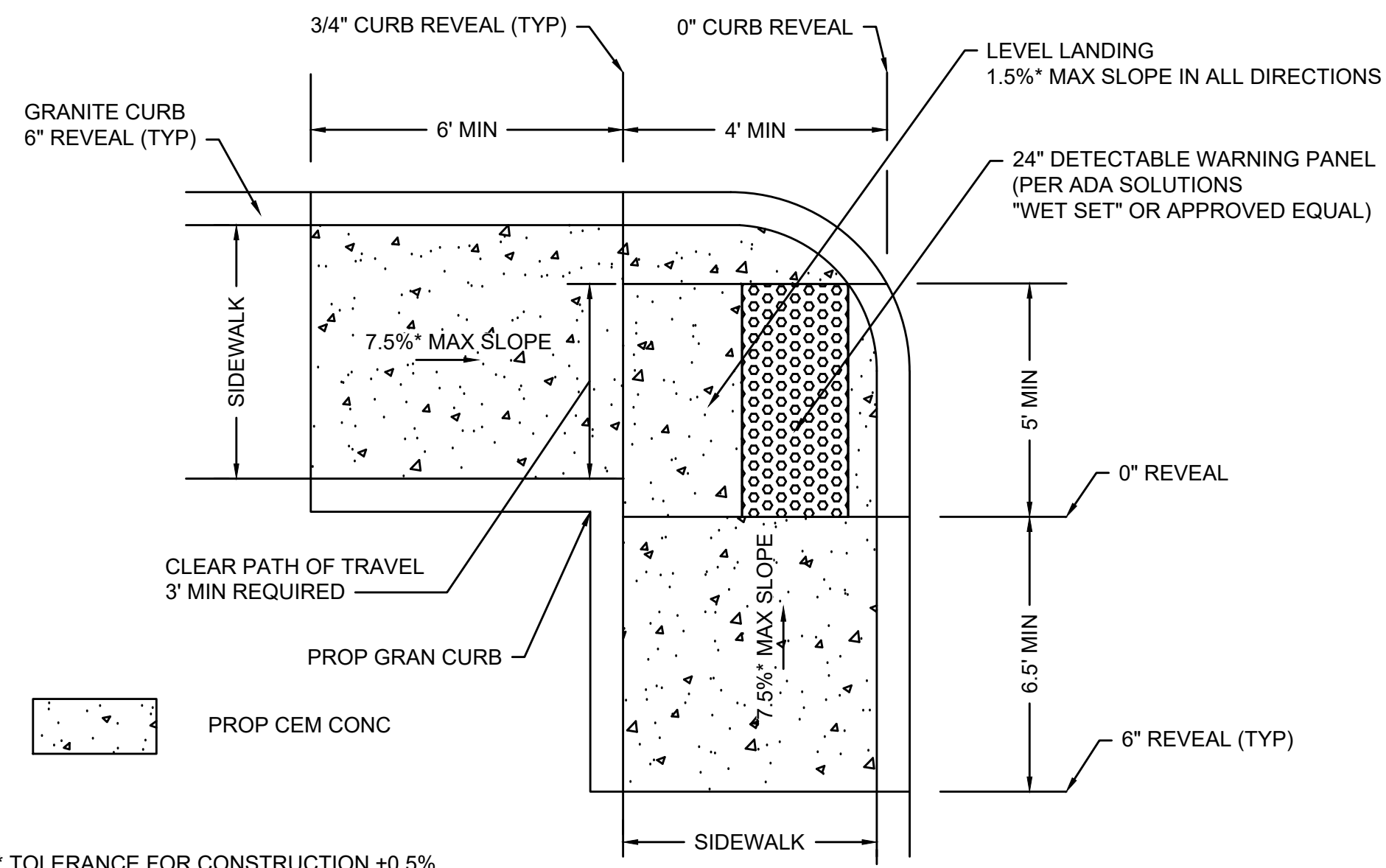
ALIGNMENT - MEADOWBROOK RD LT GUTTER



CITY OF NEWTON
 MASSACHUSETTS
 ALIGNMENT PLAN
 FOR THE
 INTERSECTION REGRADING
 AT
 MEADOWBROOK RD AT FOX HILL RD



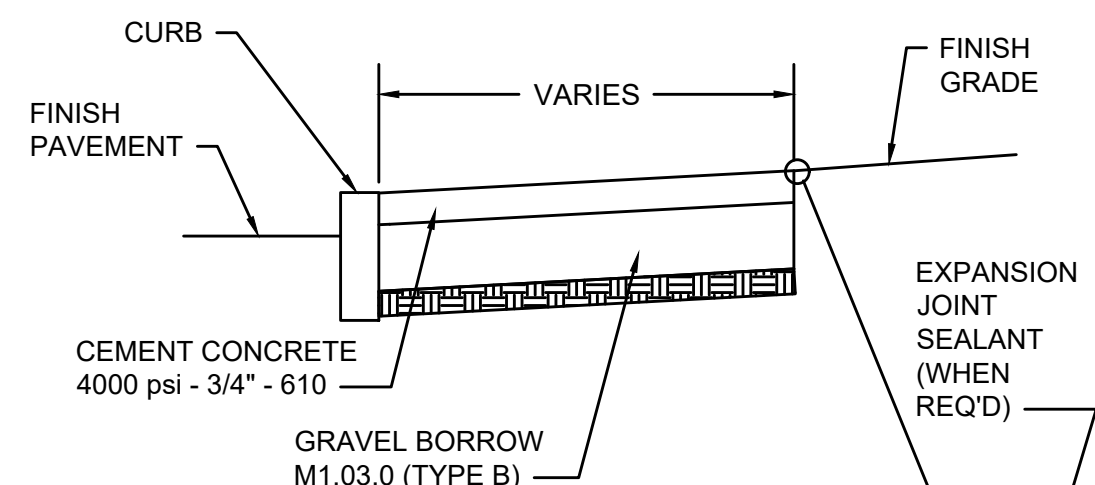
GRANITE CURB TRANSITION PIECE
SCALE: N.T.S.



* TOLERANCE FOR CONSTRUCTION ±0.5%

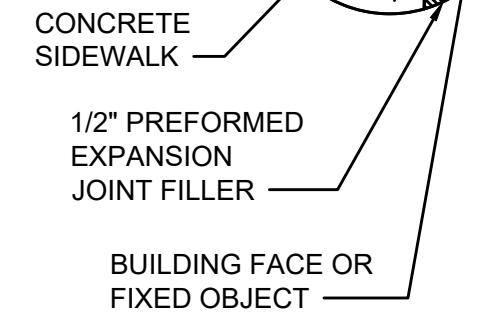
PEDESTRIAN RAMP - SINGLE STREET CROSSING SERVING TWO SIDEWALK DIRECTIONS

SCALE: N.T.S.



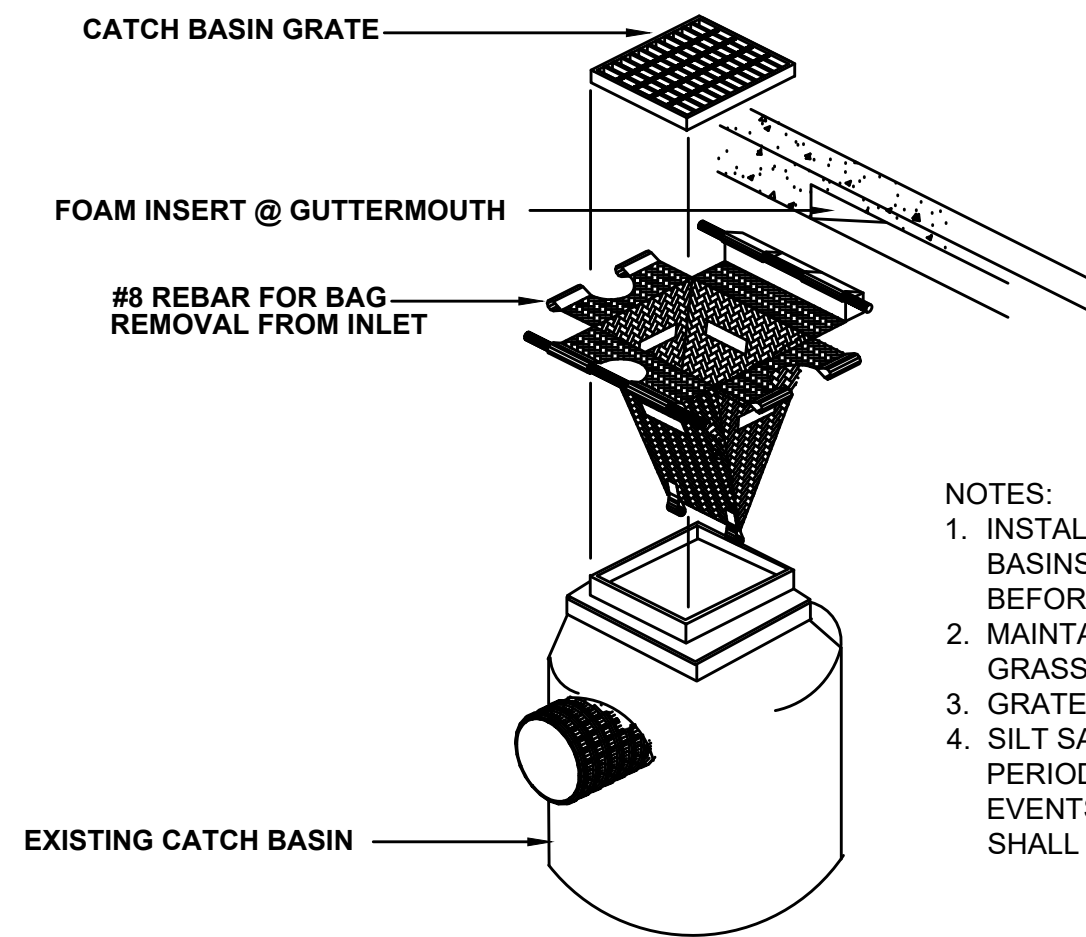
SECTION

- NOTES:
1. PROVIDE EXPANSION JOINTS AT MIN 30' O.C. WITH PRE-MOULDED JOINT FILLER.
 2. PROVIDE TOOLED DUMMY JOINTS.
 3. PROVIDE BROOM FINISH IN DIRECTION PERPENDICULAR TO CURB.
 4. PROPOSED SIDEWALK SHALL MATCH EXISTING SIDEWALK PATTERN.



CEMENT CONCRETE SIDEWALK

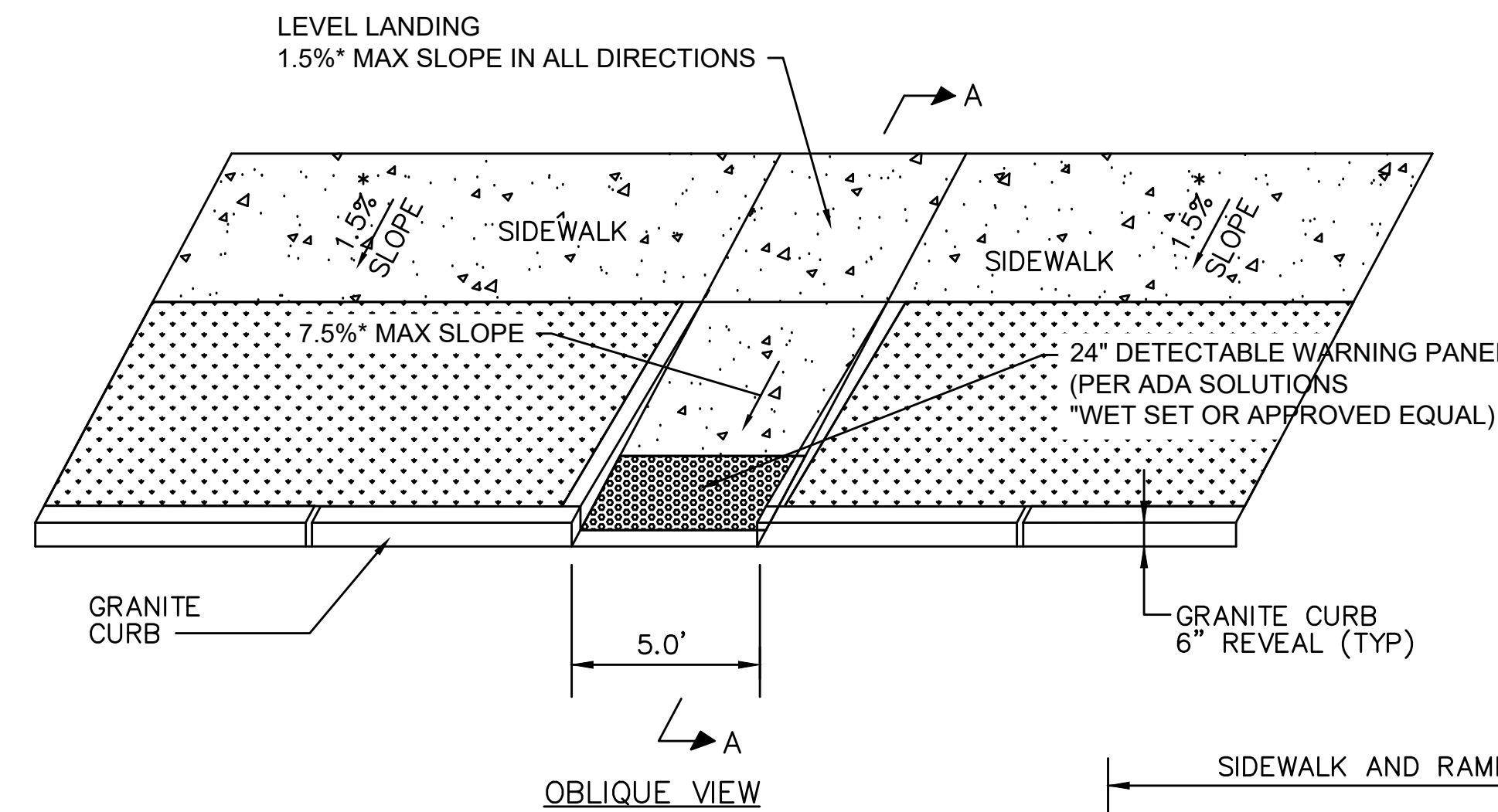
SCALE: N.T.S.



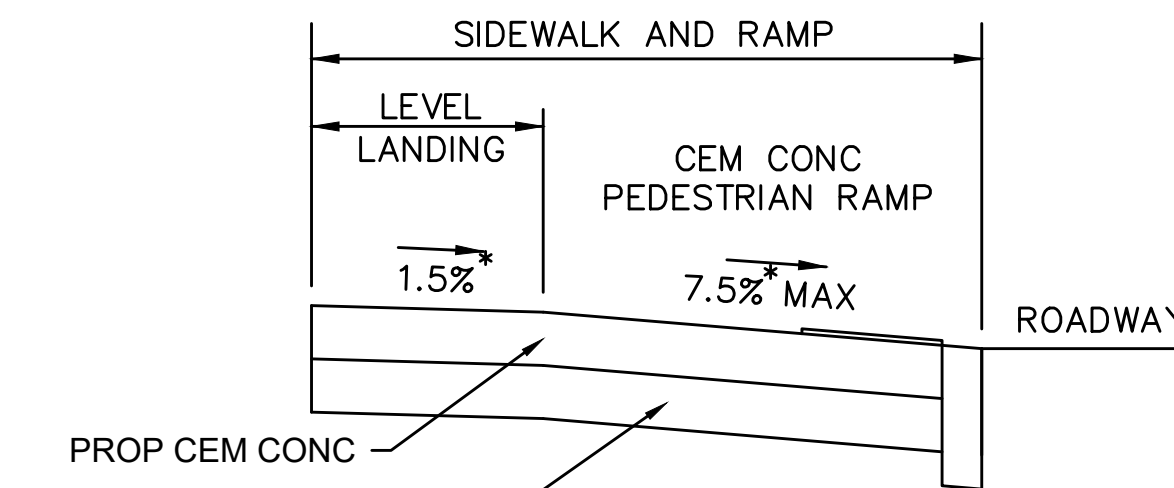
- NOTES:
1. INSTALL SILT SACK IN EXISTING CATCH BASINS WITHIN THE LIMITS OF WORK, BEFORE COMMENCING WORK.
 2. MAINTAIN UNTIL A PERMANENT STAND OF GRASS HAS BEEN ESTABLISHED.
 3. GRATE TO BE PLACED OVER SILT SACK.
 4. SILT SACK SHALL BE INSPECTED PERIODICALLY AND AFTER ALL STORM EVENTS AND CLEANING OR REPLACEMENT SHALL BE PERFORMED.

TYPICAL 2'X2' SILT SACK

SCALE: N.T.S.



OBLIQUE VIEW



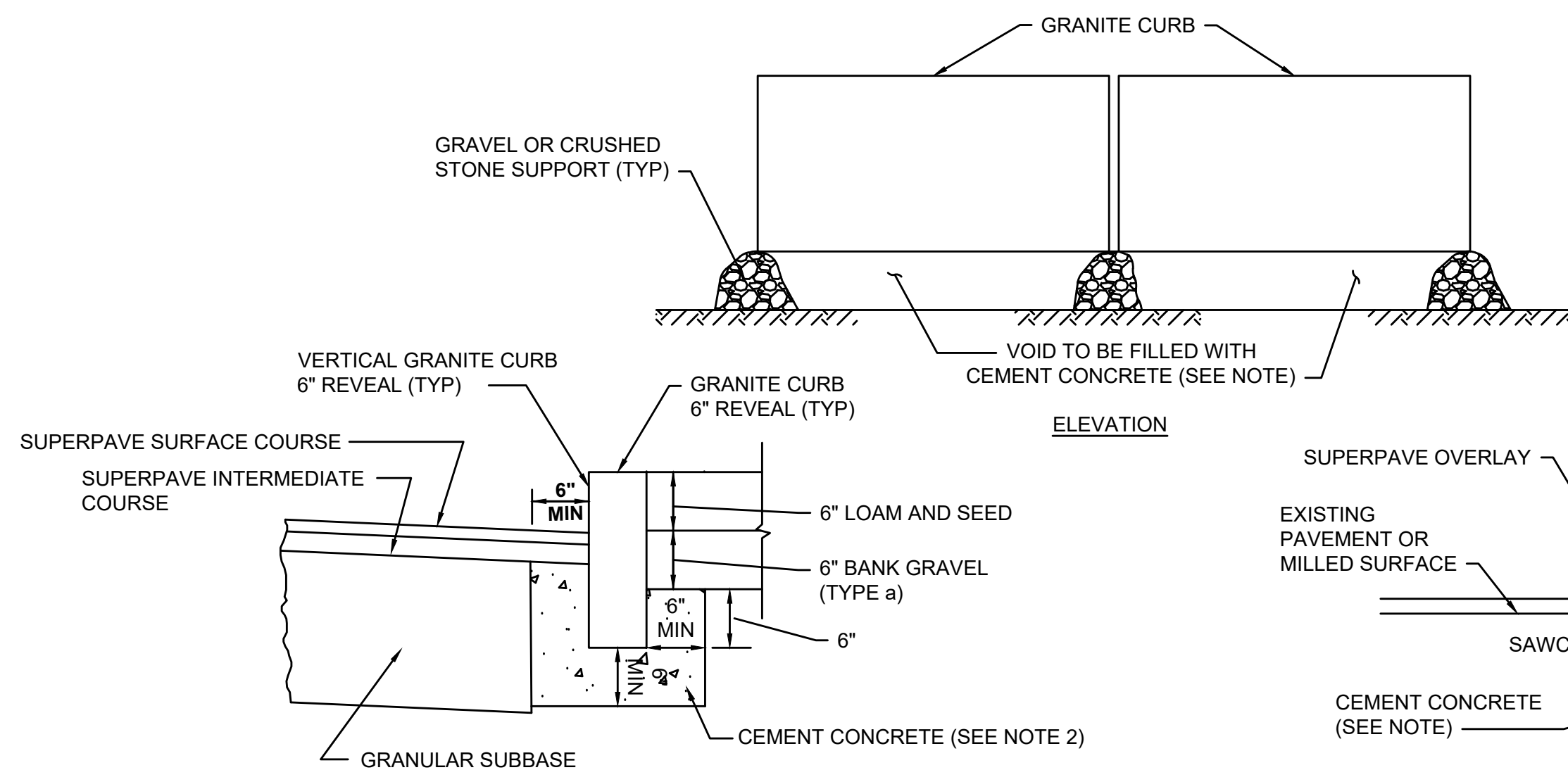
SECTION A-A

PROP CEM CONC

* TOLERANCE FOR CONSTRUCTION ±0.5%

PEDESTRIAN RAMP LENGTH GREATER THAN 12.0 FT

SCALE: N.T.S.

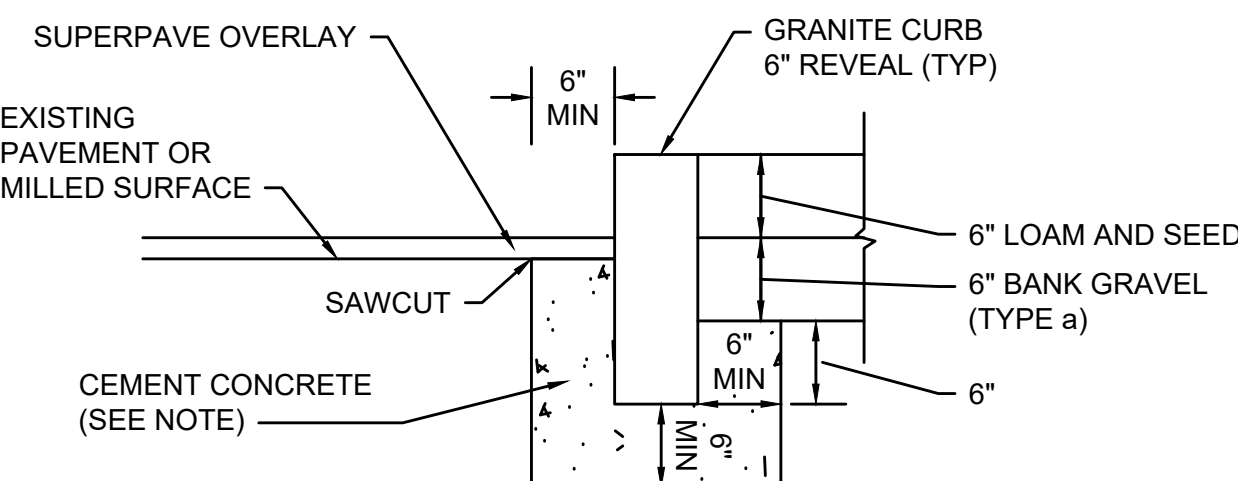


ELEVATION

- NOTES:
1. THIS PROCEDURE IS APPLICABLE ONLY IF CURB IS TO BE SET AFTER BASE COURSE IS IN PLACE PRIOR TO BINDER AND TOP PLACEMENT.
 2. ANY DESIGNATED CEMENT CONCRETE THAT IS ACCEPTABLE UNDER SECTION M4 OF THE STANDARD SPECIFICATIONS MAY BE USED. ALL TEST REQUIREMENTS ARE WAIVED. HOT MIX ASPHALT SHALL NOT BE USED AS A SUBSTITUTE.

GRANITE CURB IN FULL DEPTH PAVEMENT

SCALE: N.T.S.

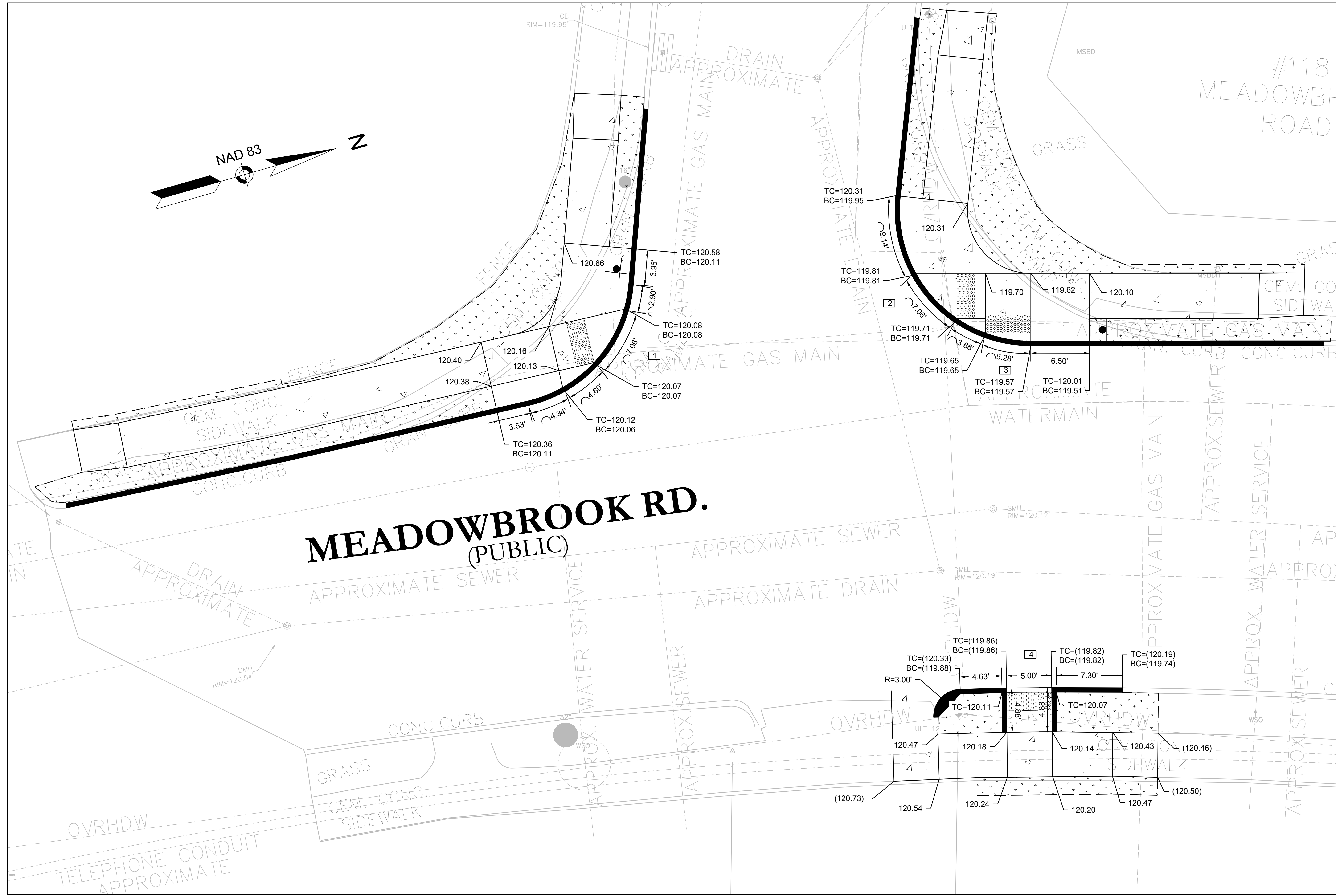


SECTION

- NOTE: ANY DESIGNATED CEMENT CONCRETE THAT IS ACCEPTABLE UNDER SECTION M4 OF THE STANDARD SPECIFICATIONS MAY BE USED. ALL TEST REQUIREMENTS ARE WAIVED. HOT MIX ASPHALT SHALL NOT BE USED AS A SUBSTITUTE.

GRANITE CURB IN EXISTING PAVEMENT WITH OVERLAY & GRASS STRIP

SCALE: N.T.S.



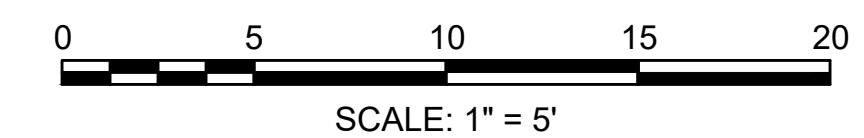
PROPOSED CEMENT CONCRETE PEDESTRIAN RAMPS

LEGEND:

- NEW PROPOSED GRANITE CURBING
- EXISTING CURBING
- PROPOSED CEMENT CONCRETE

LEGEND:

- 120.20 PROPOSED SPOT ELEVATION
- (120.20) EXISTING SPOT ELEVATION



CITY OF NEWTON
 MASSACHUSETTS
 PEDESTRIAN RAMP DETAILS
 FOR THE
 INTERSECTION REGRADING
 AT
 MEADOWBROOK RD AT FOX HILL RD

PAGE 9 OF 9
 Louis M. Taverna, P.E. DATE: 6/25/20