

City of Newton Planning and Development

Petition # 377-22

Special Permit/Site Plan Approval
*to allow parking in the front
setback*

August 9, 2022



344 Woodward Street

Zoning Relief

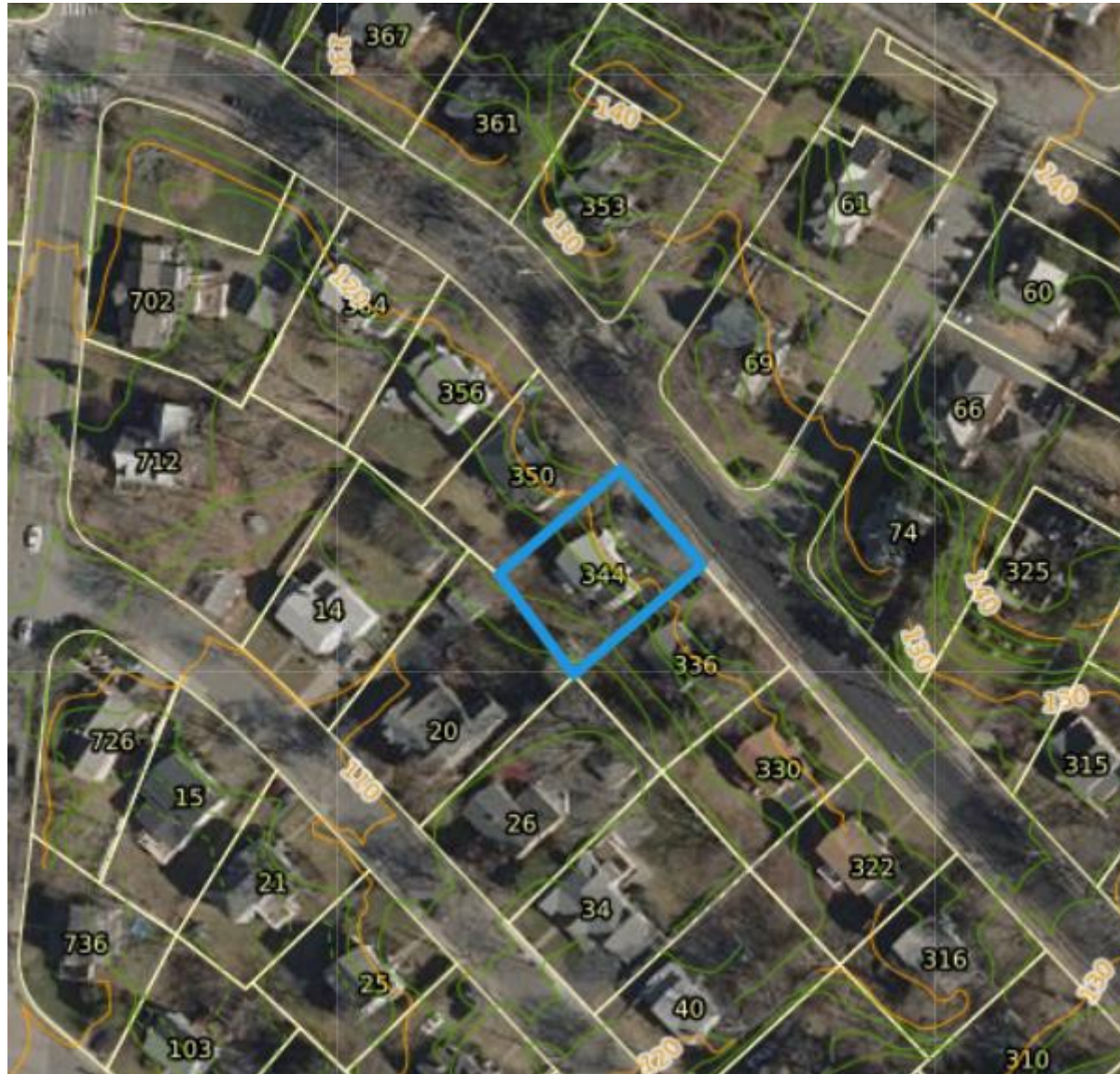
Zoning Relief Required		
<i>Ordinance</i>		<i>Action Required</i>
§5.1.7.A §5.1.13	Request to allow parking in the front setback	S.P. per §7.3.3

Criteria to Consider

When reviewing this request, the Council should consider:

- granting an exception to the requirements established by §5.1.7.A that no parking stall shall be located within any required setback distances from a street lot line is appropriate as literal compliance with the requirement is impracticable due to the nature of the use, or the location, size, width, depth, shape, or grade of the lot, or that such exceptions would be in the public interest, or in the interest of safety, or protection of environmental features (§5.1.13)

Aerial Map



Zoning





ATTACHMENT B

Zoning

344 Woodward St.

*City of Newton,
Massachusetts*

-  Single Residence 2
-  Public Use



The information on this map is
Geographic Information System (GIS) data. The City of
Newton cannot guarantee the accuracy of this
information. Each user of this map is responsible
for determining its suitability for his or her intended
purpose. City departments will not necessarily
approve applications based solely on GIS data.

CITY OF NEWTON, MASSACHUSETTS
Mayor - Ruthanne Fuller
GIS Administrator - Douglas Greenfield



Map Date: August 03, 2022

Land Use



ATTACHMENT A




Land Use

344 Woodward St.

*City of Newton,
Massachusetts*

Land Use

Land Use

-  Single Family Residential
-  Open Space
-  Vacant Land



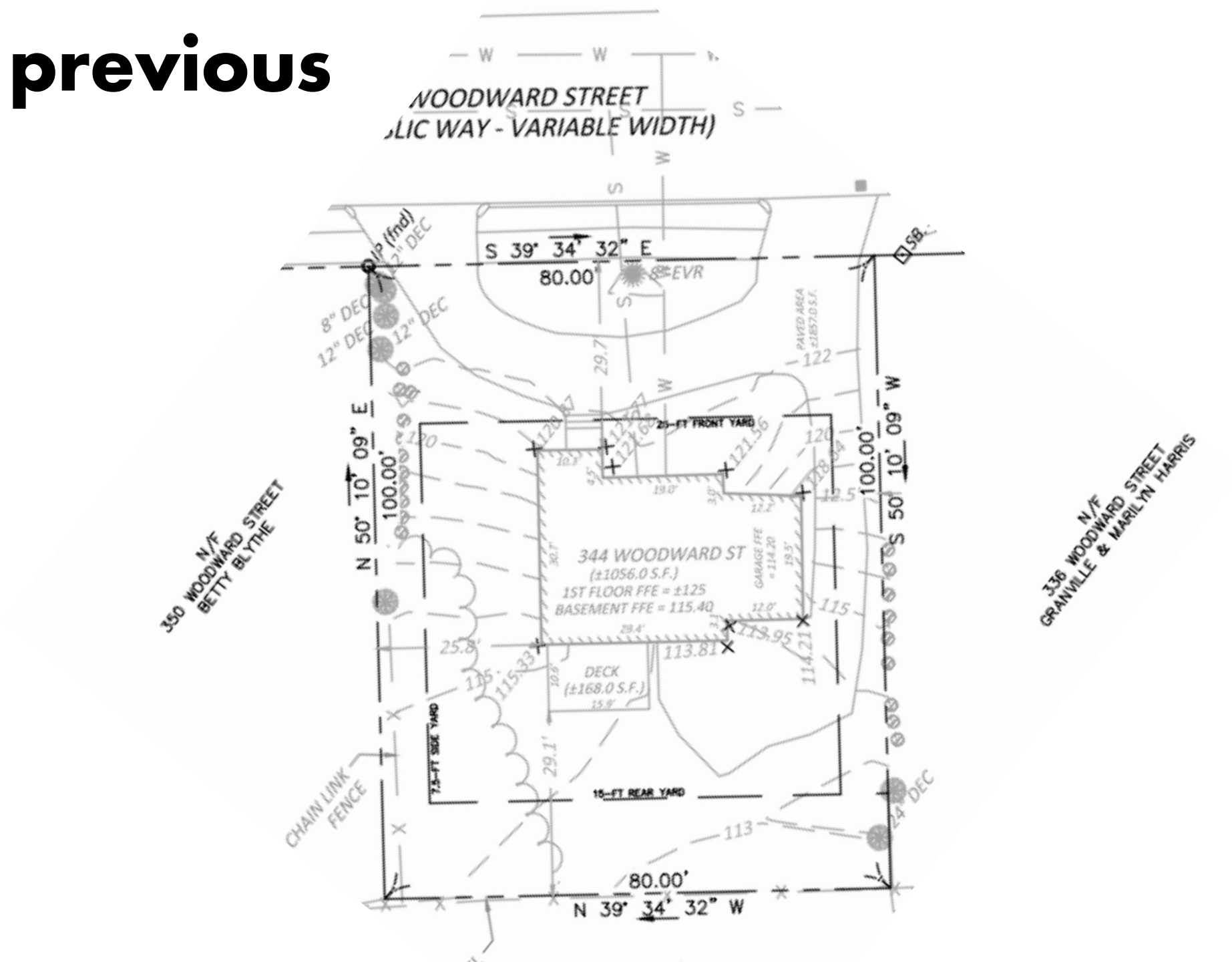
The information on this map is derived from the City of Newton's Geographic Information System (GIS). The City of Newton cannot guarantee the accuracy of this information. Each user of this map is responsible for determining its suitability for his or her intended purpose. City departments will not necessarily approve applications based solely on GIS data.

CITY OF NEWTON, MASSACHUSETTS
Mayor - Ruthanne Fuller
GIS Administrator - Douglas Greenfield

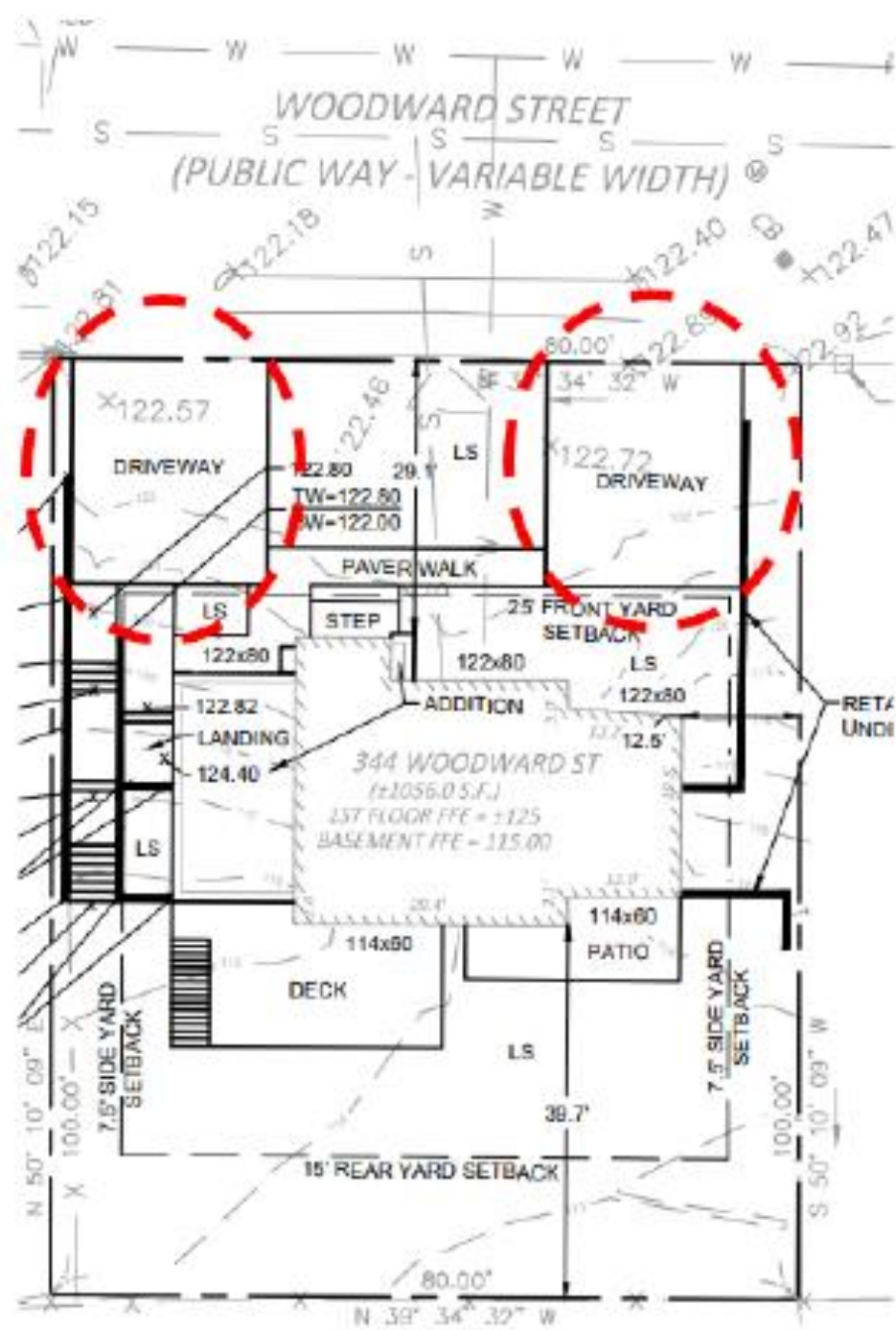


Map Date: August 03, 2022

Plans- previous



Site Plan



Plans- Landscaping plan (8/9/22)



Photos



Photos

