



COUNTRYSIDE ELEMENTARY SCHOOL

SBC MEETING NO. 3 - 8/23/2022



- 1. Call to Order & Intro**
- 2. Approval of Minutes**
 - **5/24/22 SBC Meeting Minutes**
 - **6/21/22 SBC Meeting Minutes**
- 3. Designer Selection Update**
- 4. Introduction of the Designer, DiNisco Design Team**
- 5. Public Comment**
- 6. Next Meetings**
- 7. Adjourn**

1. Call to Order & Intro

2. Approval of Minutes

- 5/24/22 SBC Meeting Minutes. Vote Expected.
- 6/21/22 SBC Meeting Minutes. Vote Expected.

3. Designer Selection Update

4. Introduction of the Designer, DiNisco Design Team



School Building
Committee Meeting

COUNTRYSIDE ELEMENTARY SCHOOL

Newton, MA

Countryside Team



Vivian Low

Vice President/Principal
**Principal-In-Charge/
Design Lead**



Jim Shuttleworth

Vice President/Principal
Project Manager



Anne Woodacre

Architect
Project Architect



Donna DiNisco

President/Principal
**Educational Programmer/
Public Outreach**



David Stephen

New Vista
Educational Planner



Bill Brown

Brown + Sardina, Inc.
Landscape Architect



Semoon Oh

VAV International, Inc.
Mechanical Engineer



Janet Bernardo

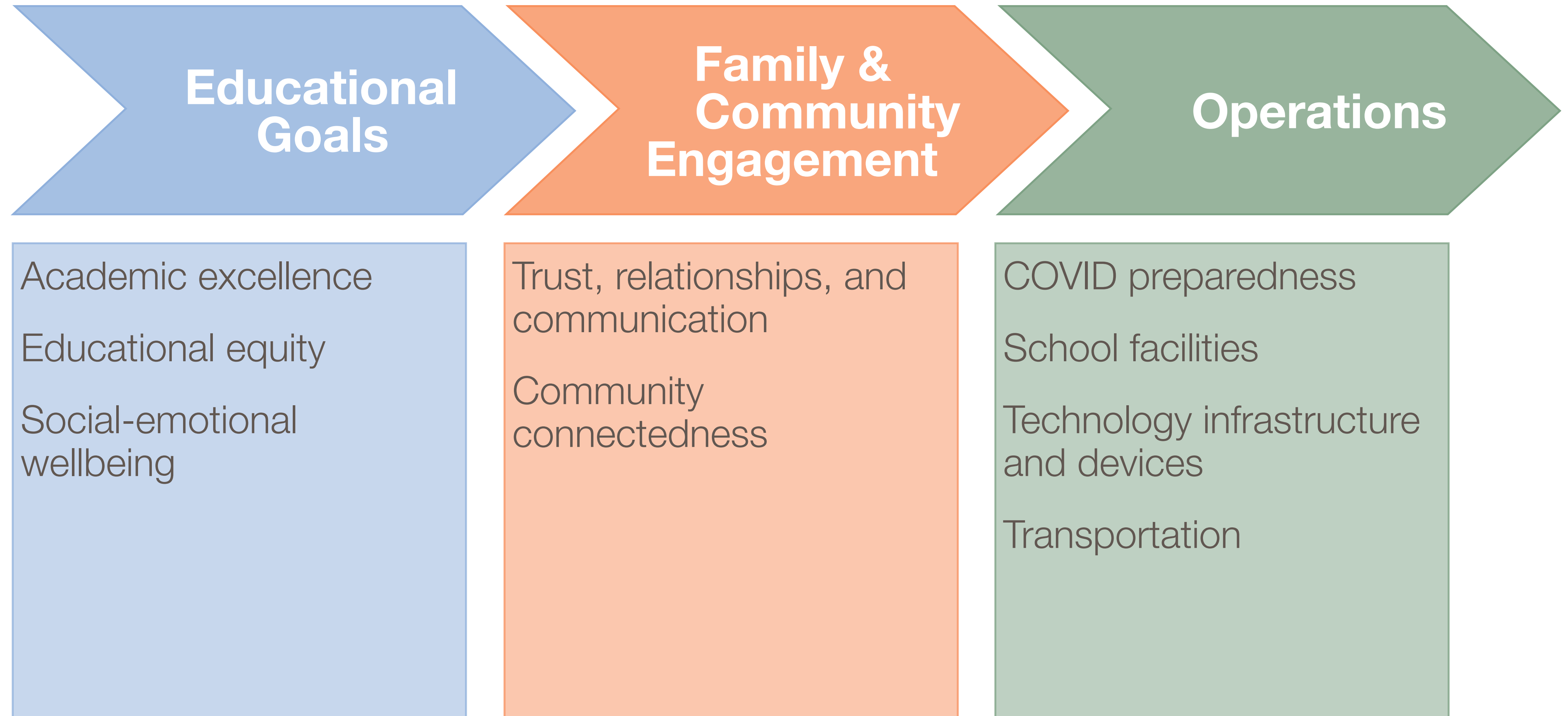
Horsley Witten
Civil Engineer



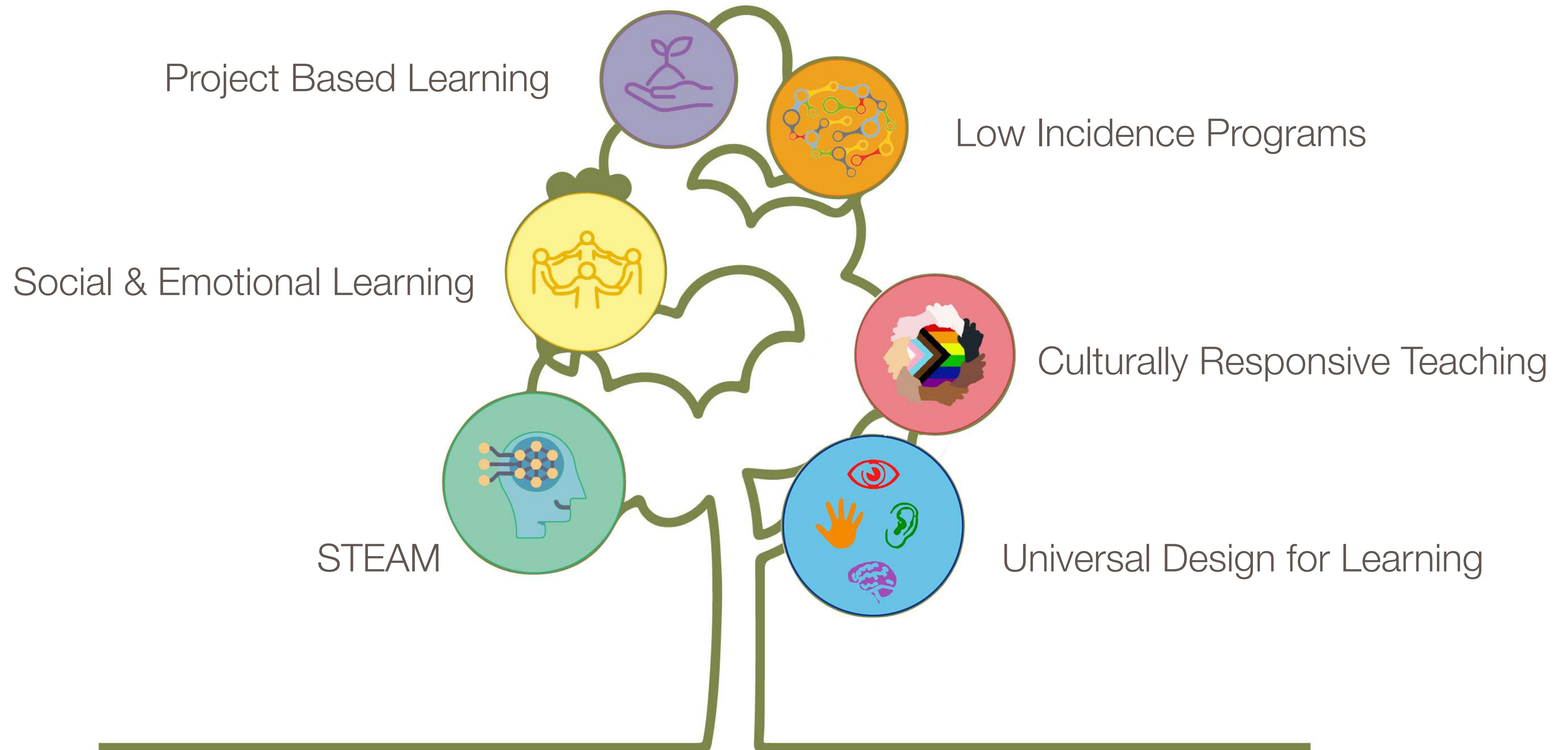
Alejandra Menchaca

Thornton Tomasetti
Sustainability Consultant

Educational Programming | Educational Priorities



Educational Programming | Educational Priorities



Educational Programming | Social Emotional Learning

Sense of belonging

Connection

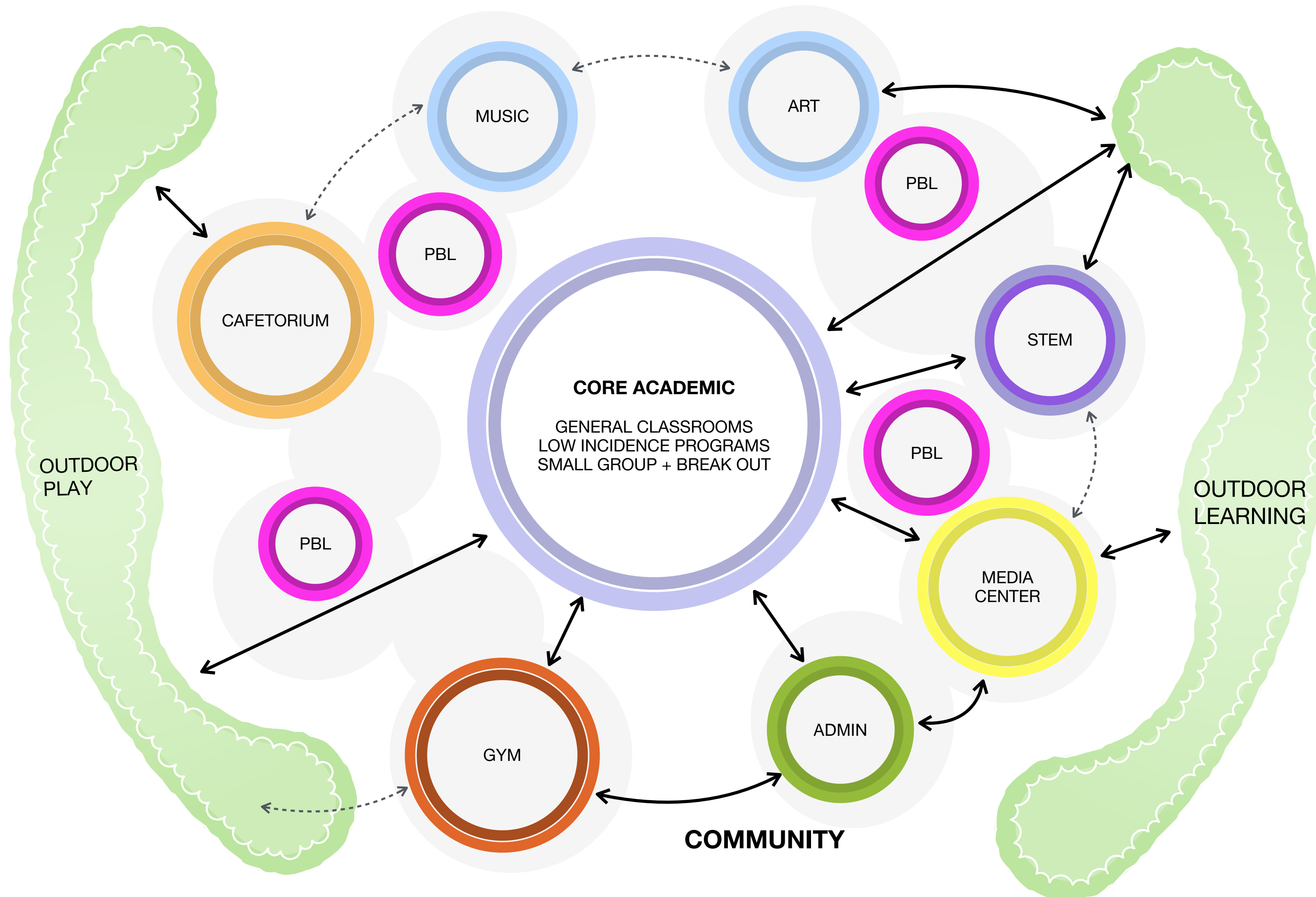
Ownership

Scaled to their own experience

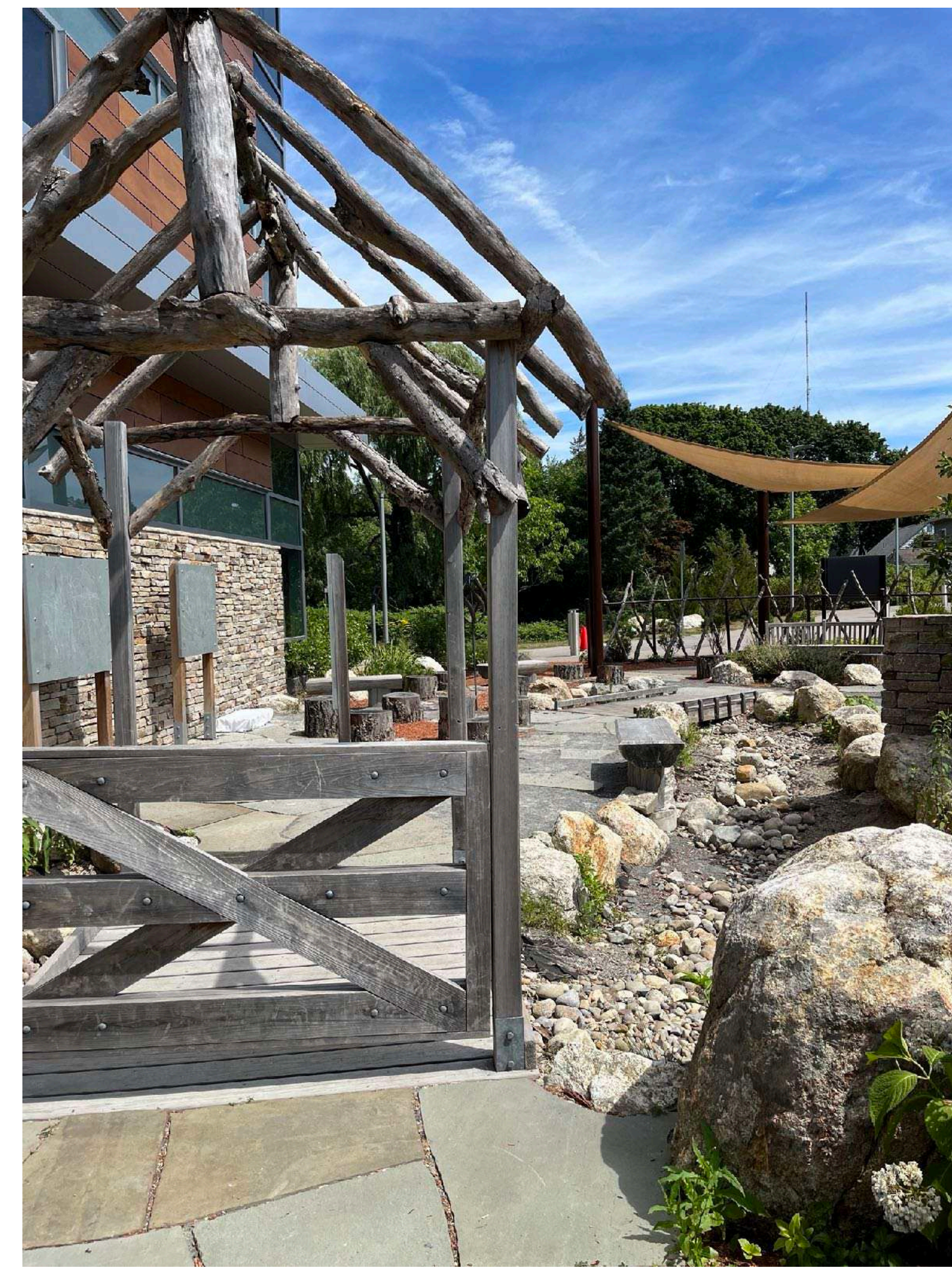
Smaller learning orbits



Educational Programming | Differentiated Learning Environments



Educational Programming | Outdoor Learning Opportunities



Precedents | Making the Right Choices

Similarities to Countryside

Successful community engagement to pass an override vote

Highly engaged families

Inclusive educational program

Cost sensitive design

Significant wetlands

New school on an occupied site

All-electric building

Net zero energy

“DiNisco stands apart because of the way they work with everyone.”

Pat Goddard,
Former Lexington Director of Facilities



Maria Hastings Elementary School
\$497/SF (2020)

Precedents | Net Zero Strategies



On-Site Energy Storage

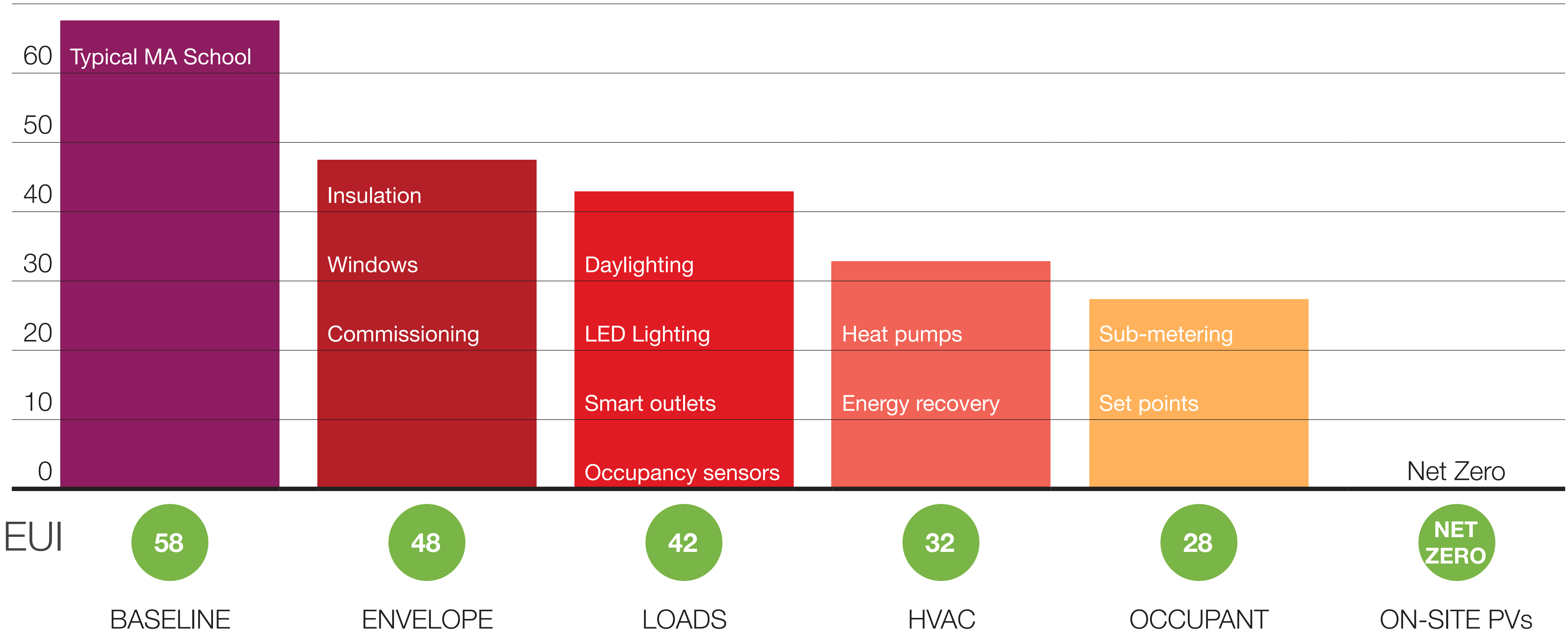
80 Geothermal Wells

Rooftop PVs

All-Electric Building

Solar Canopies

Sustainability | Designing a High Performance Building



Sustainability | EUI Success Stories



Cabot Elementary School

EUI 26.9 **Net Zero Ready**

- LEED-S Gold
- Sustainable site design
- HVAC induction system
- Water use reduction
- Rooftop solar panels



Hastings Elementary School

EUI 28.8 **Net Zero**

- All electric building
- GSHP
- Rooftop/parking solar panel system
- Energy storage system
- Water use reduction
- HVAC induction system
- Rain gardens
- Sustainable site
- Pervious pavement



Lexington Children's Place

EUI 21.4 **Energy positive**

- All electric building
- ASHP
- Rooftop/parking solar panel system
- Energy storage system
- Sustainable site
- Rain gardens
- Pervious pavement

Sustainability | Research Supporting Students' Social-Emotional Health

Studying in daylit classroom spaces leads to **longer sleep time and better sleep quality** compared to those who received little or no daylight.

Varying access to daylighting in the classroom is associated with a **20% variation in student test scores.**

Access to natural window views significantly influences students' **recovery from a stressful experience.**

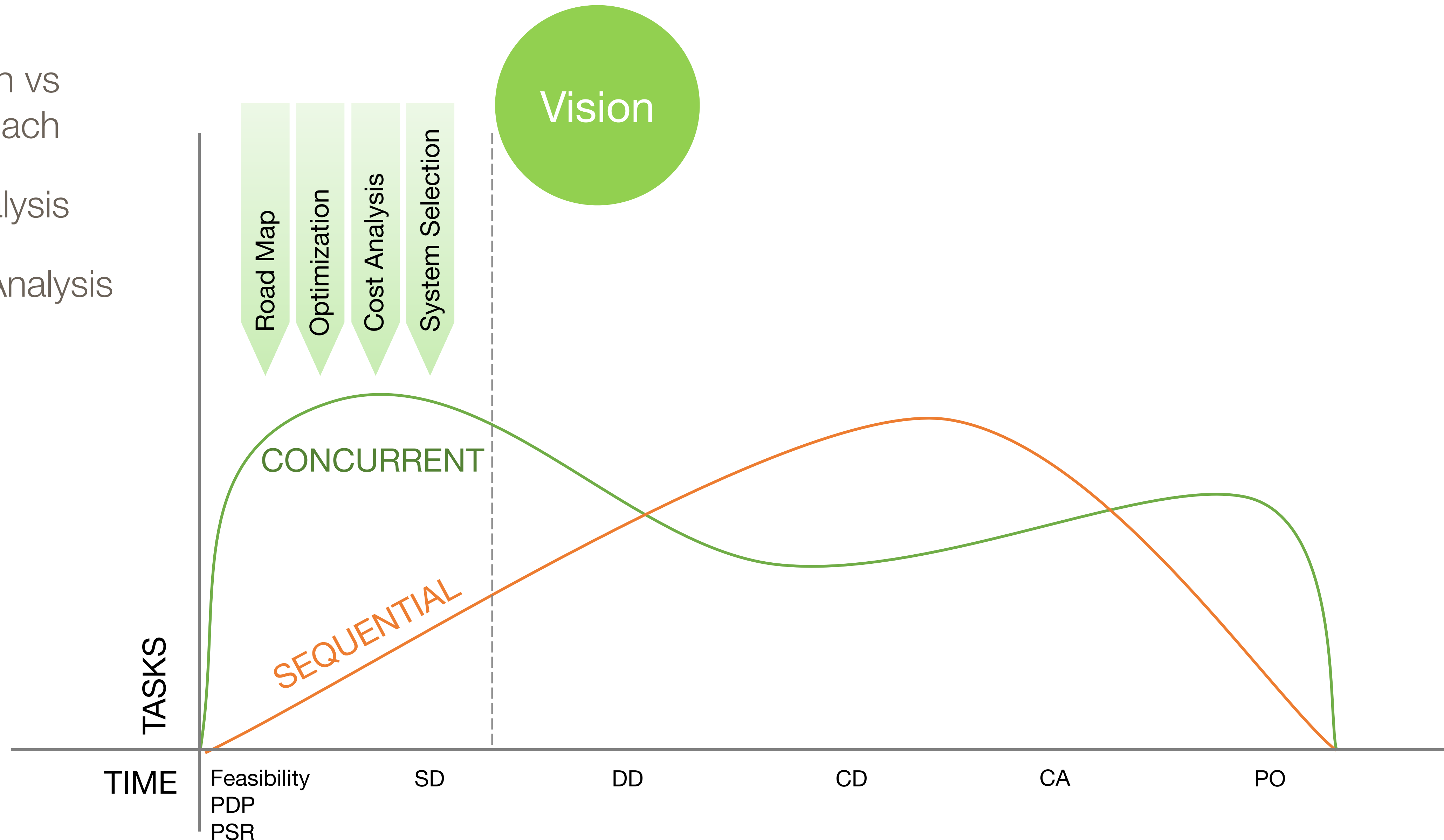
Students **rated courses higher and performed better on assignments** in courses where they had visual access to natural views.

Sustainability | Making the Right Decisions Early On

Integrated Design vs
Traditional Approach

Early Design Analysis

Life Cycle Cost Analysis



Sustainability | Systems Decision-Making

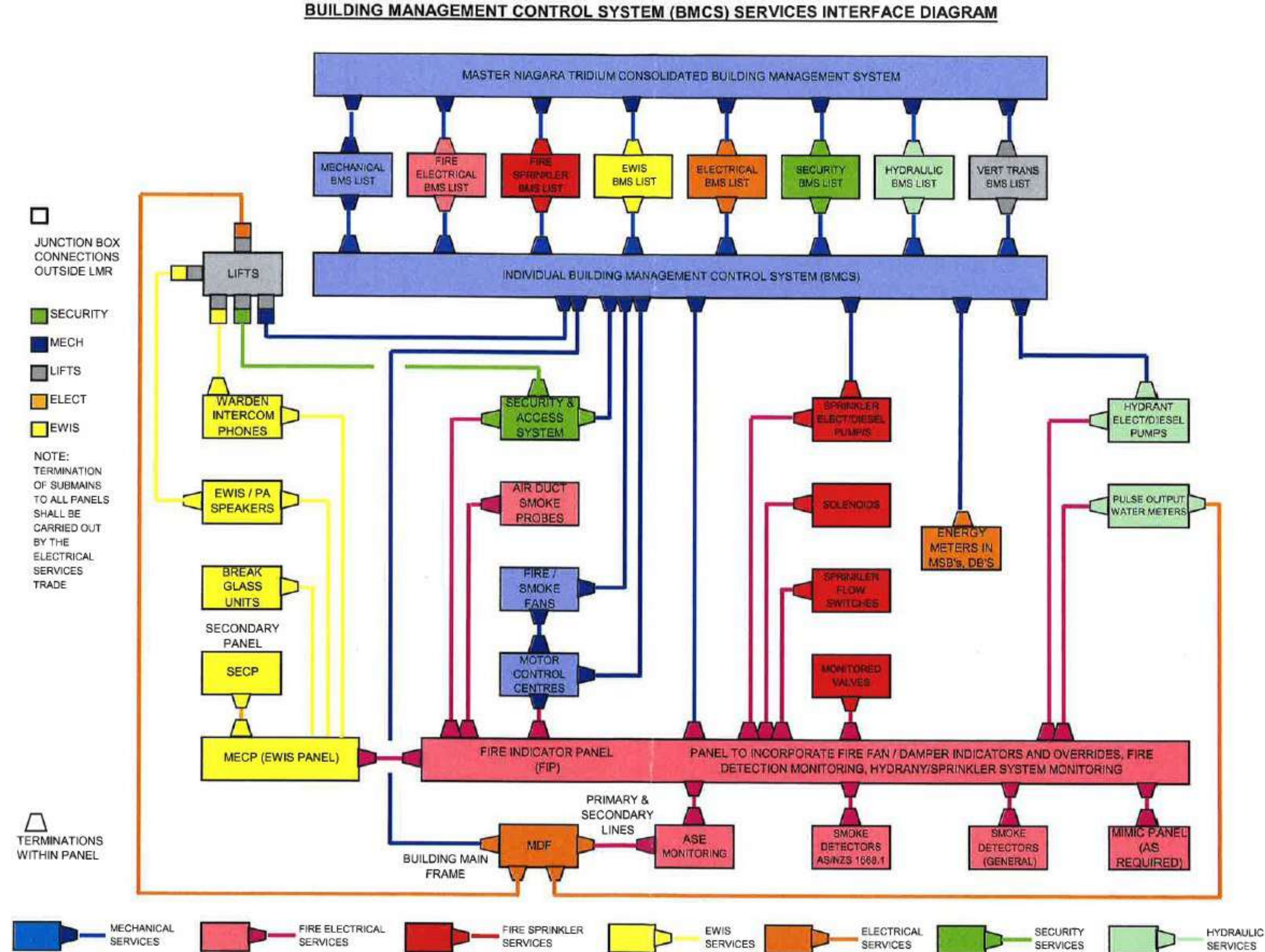
BMS for building-wide Integration

Not just HVAC

Custom designed to staff skillset

Remote forensic/diagnostic capability

Accountability of building performance



Sustainability | Evaluating Sustainable Options

Air Source Heat Pumps (aka VRF)

PROS:

- Lower first cost
- Appropriate for compact site
- No site impacts

CONS:

- Reduced longevity
- Higher operating costs
- No flexibility with distribution systems

Ground Source Heat Pumps (aka Geothermal)

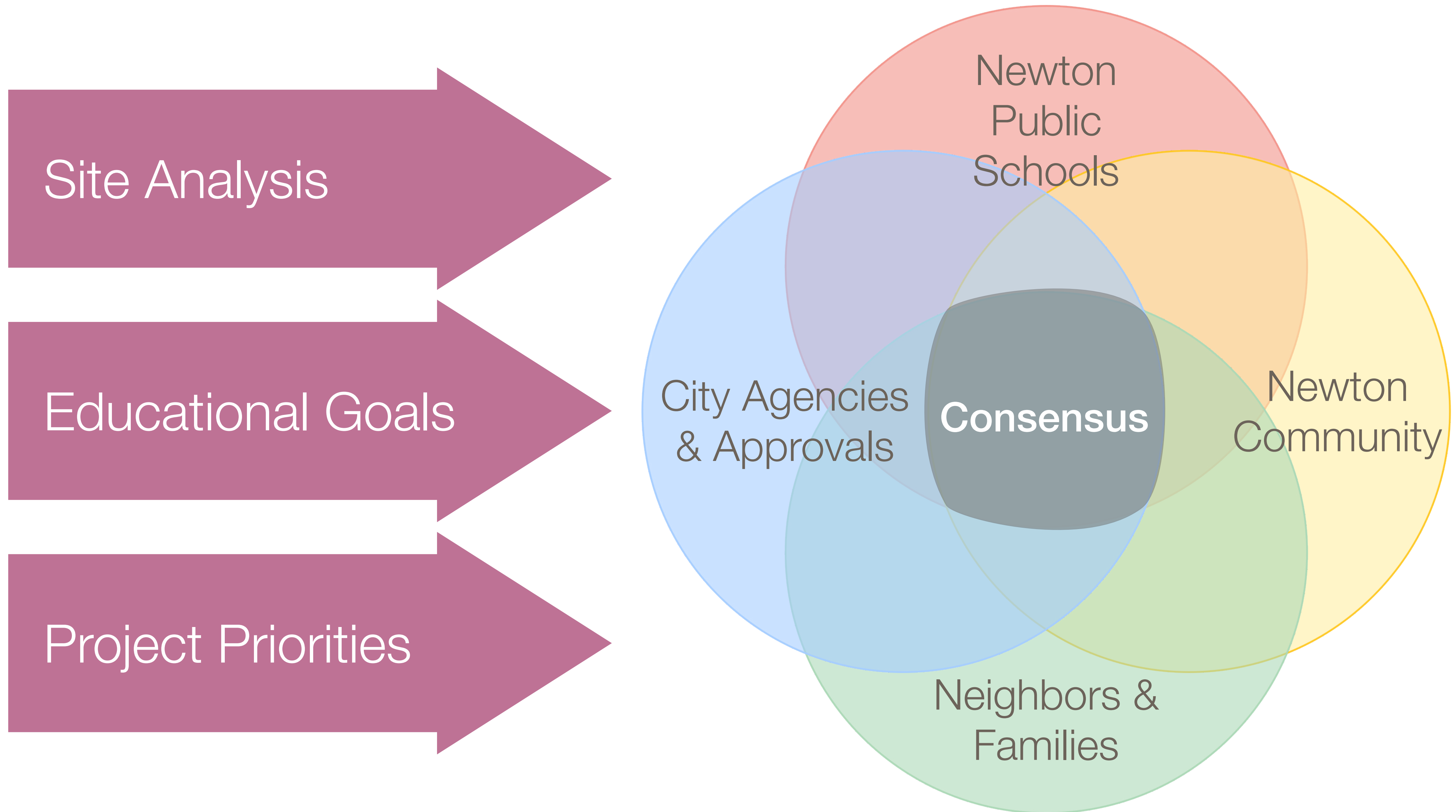
PROS:

- Higher efficiency
- Better longevity
- More flexibility with distribution system
(e.g. chilled beams, displacement)

CONS:

- Higher first cost
- Site impacts
- Impacts construction sequencing

Countryside | Project Approach



Process | Your Time, Your Budget, and Your Goals

Experienced and enthusiastic team

Keeping the team aligned with project priorities

Setting expectations for consultants

Managing timelines and deliverables

Emphasis on communication

Focus on the big picture



Process | Continuity and Quality Control

Project team continuity

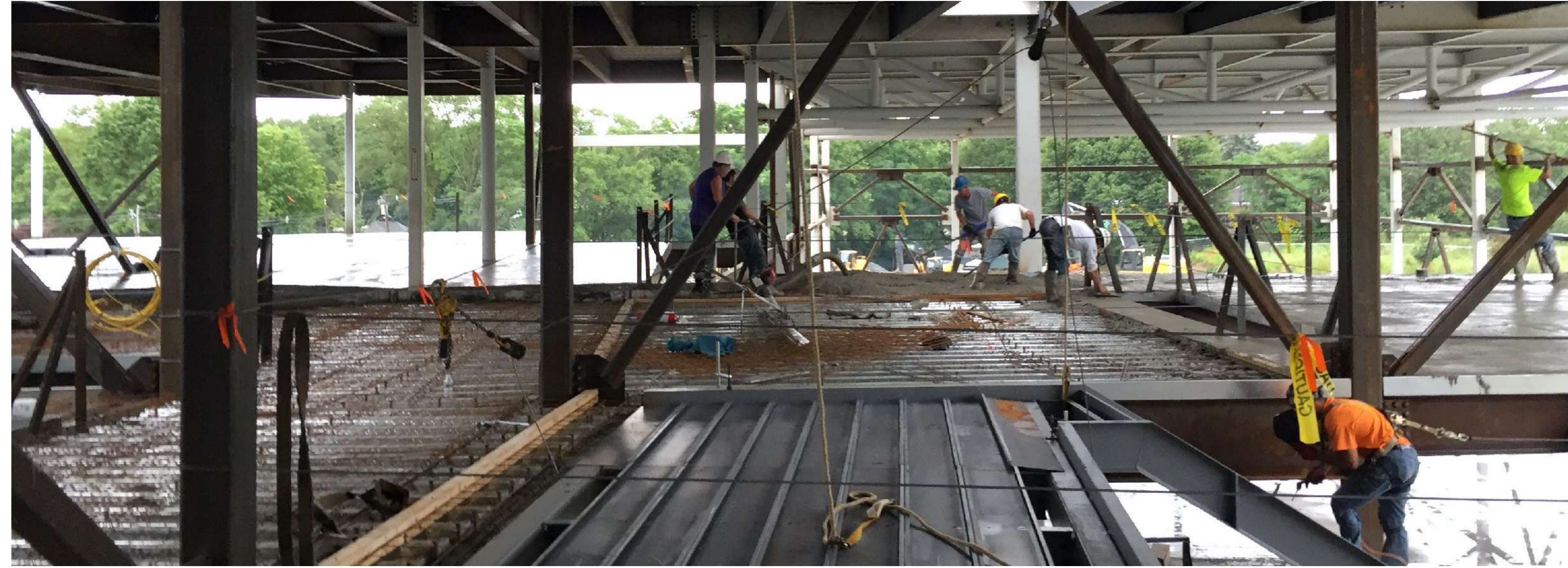
Anticipate obstacles

Address issues as they arise

Project close-out

Proven track record

Hard bid and Chapter 149a



“DiNisco stands apart from other designers. Their hands-on senior management throughout the project, excellent documents and cost control, and listening to divergent needs enabled us to arrive at solutions that satisfy all and inspire everyone.”

Peter Garvey, Director
Capital Asset Construction
City of Springfield



Countryside | Our Understanding of Your Project

Create a sense of place

Properly scaled, contextual, beautiful

Amplify community pride

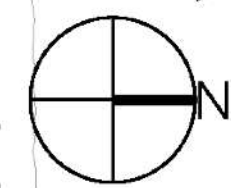
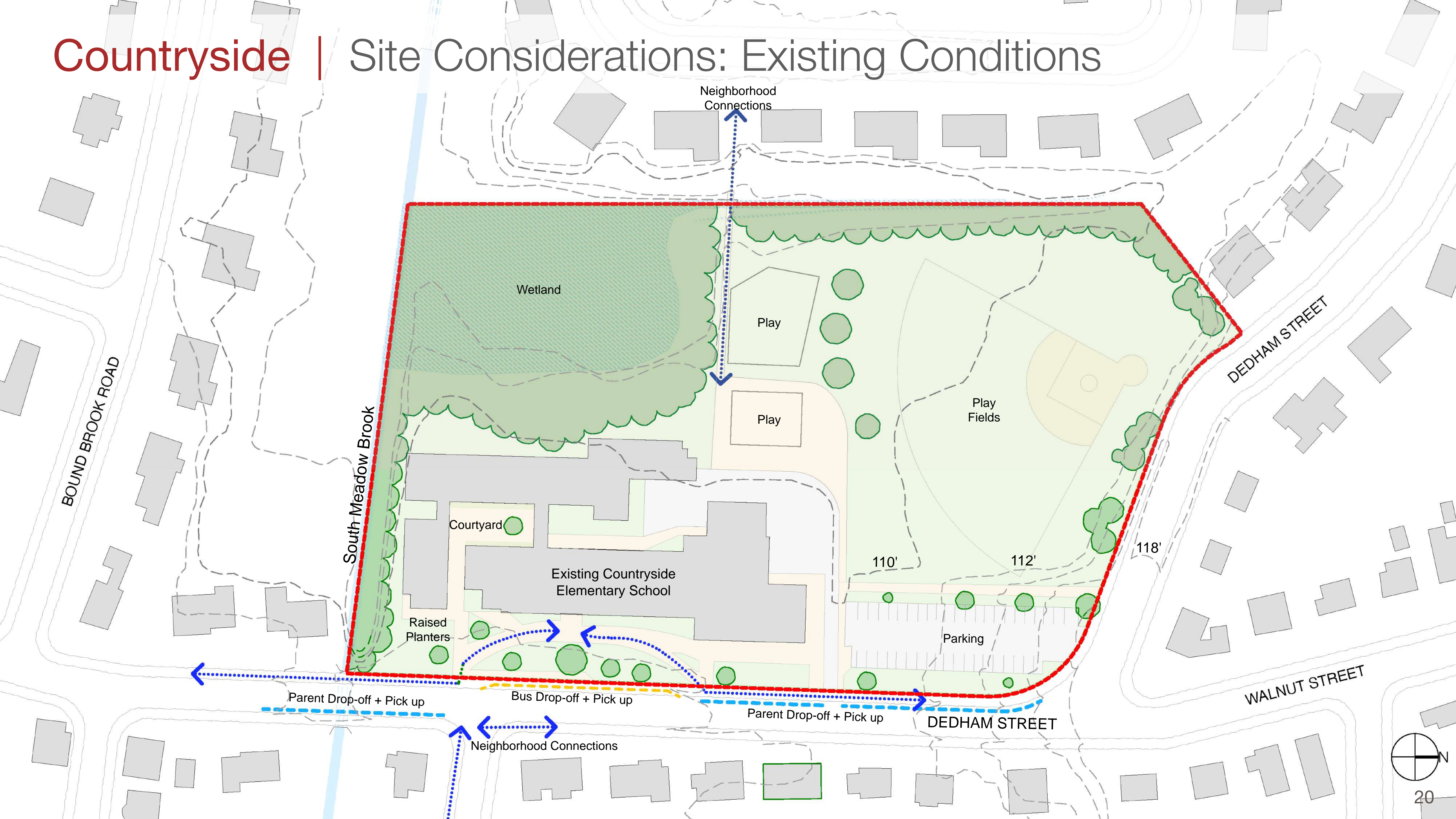
Leverage and manage large wetland area

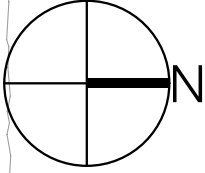
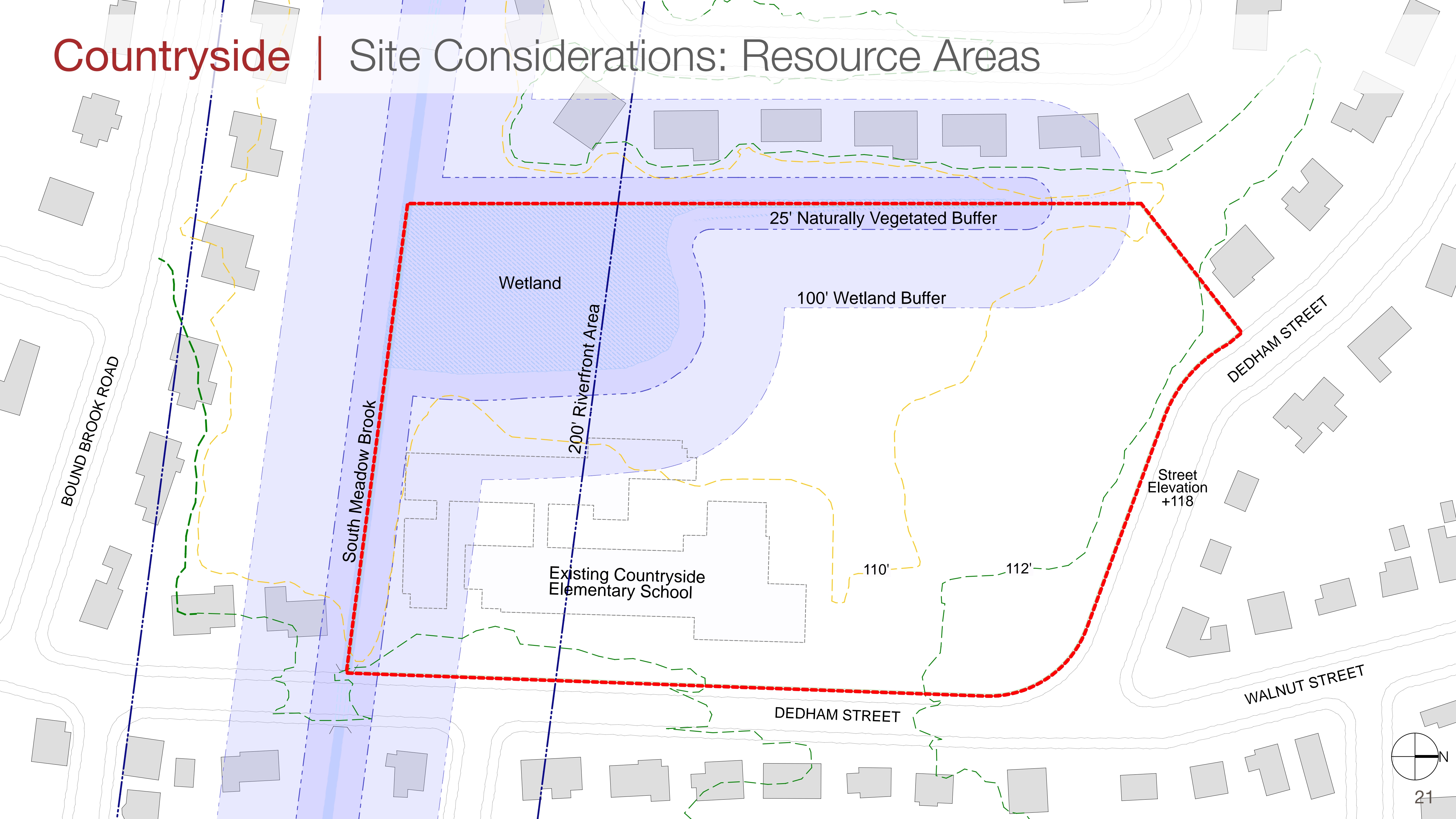
Use built environment to enhance educational goals



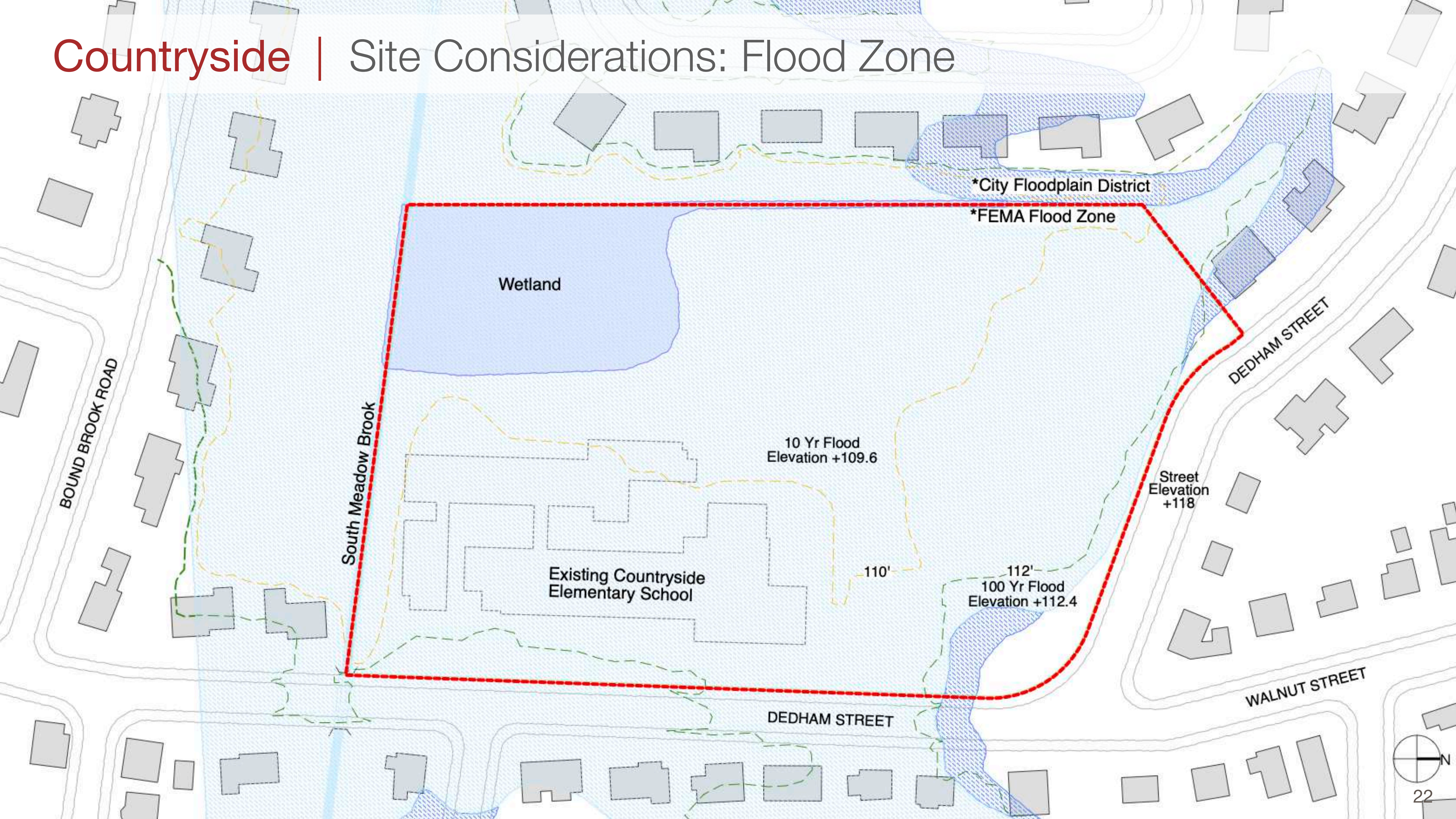
Countryside

Site Considerations: Existing Conditions



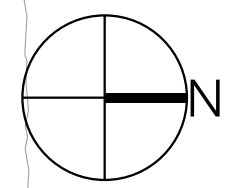
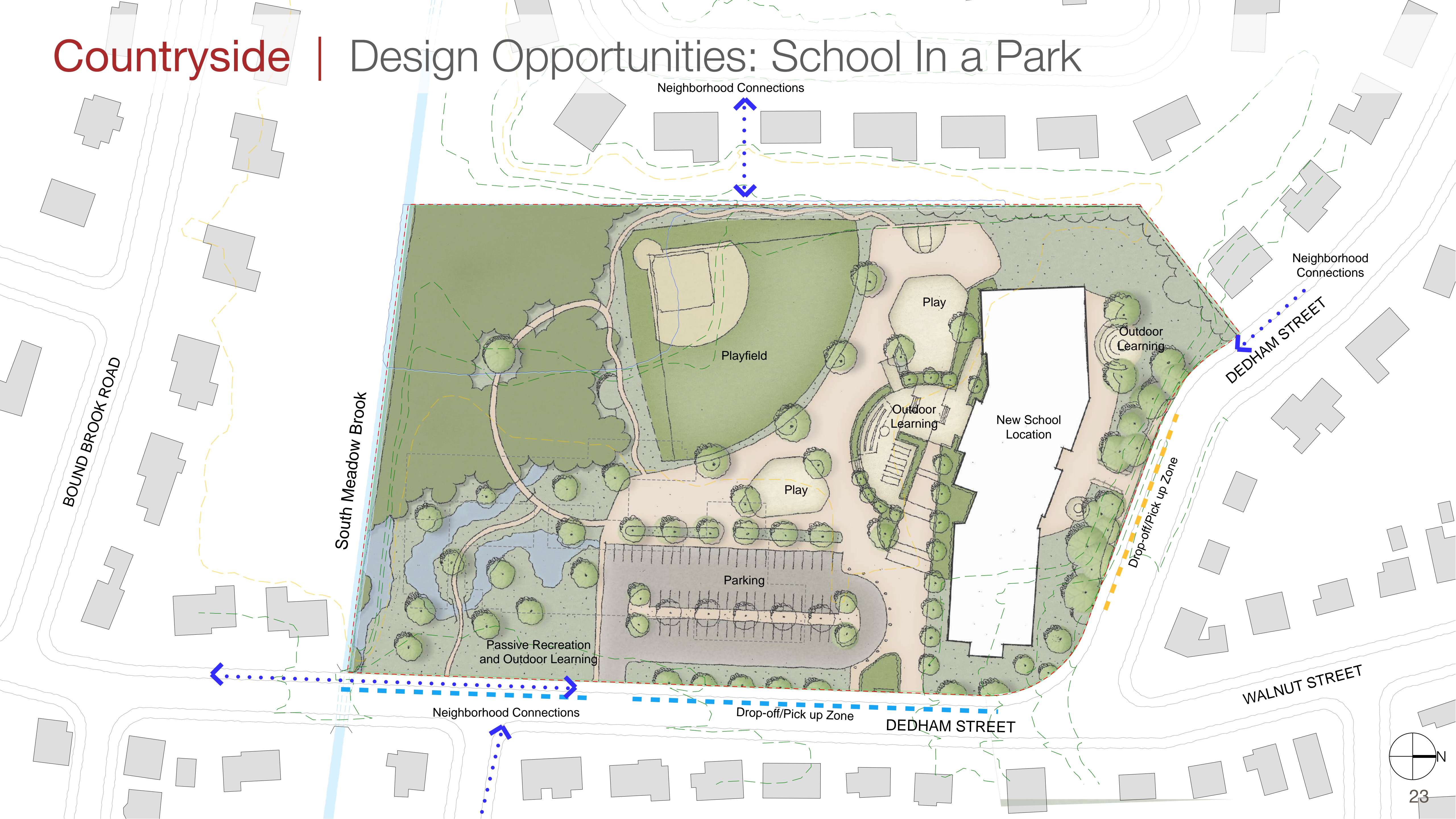


Countryside | Site Considerations: Flood Zone



Countryside

Design Opportunities: School In a Park



Countryside

Design Opportunities: Passive Recreation



WETLAND
NATURE WALKS

OUTDOOR
LEARNING
OPPORTUNITIES

STORMWATER
FEATURES

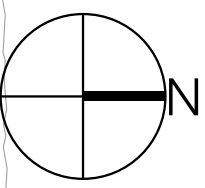
WETLAND
REPLICATION

BOUND BROOK ROAD

DEDHAM STREET

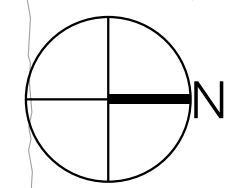
DEDHAM STREET

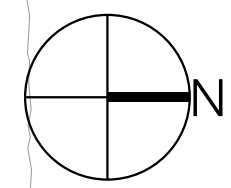
WALNUT STREET



Countryside

Design Opportunities: Active Recreation





Countryside

Design Opportunities: Site Synergy

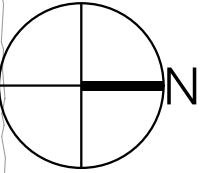


BOUND BROOK ROAD

DEDHAM STREET

DEDHAM STREET

WALNUT STREET



Countryside | Envisioning the Future



5. Public Comment

7. Next Meetings

- September 20, 2022 @ 6:00PM**

8. Adjourn

Thank You



dw
DORE + WHITTIER