

# Faculty Workshop – September 14, 2022



## ENVISIONING THE FRANKLIN ELEMENTARY SCHOOL FACILITY





# Agenda

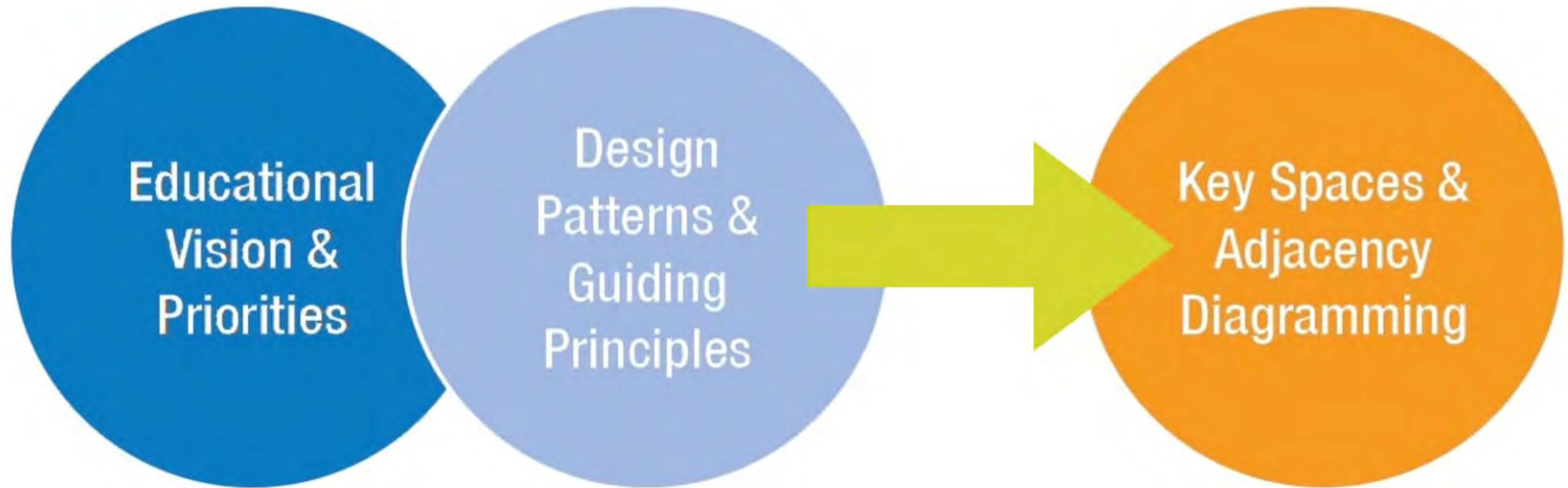


Franklin Elementary

1. Introductions and Overview (5 min)
2. Educational and Architectural Priority Setting (20 min)
3. The Franklin Elementary School Facility:  
Strengths, Challenges, and Opportunities (20 min)
4. Design Pattern Presentation (35 min)
- Break (10 min)
5. Small Group Design Pattern Prioritization (30 min)
6. Blue Sky Ideas (30 min)



# The Visioning Process





# Developing a Narrative

- Educational vision
- Design priorities and goals
- Desired adjacencies
- Optimization of MSBA space template
- Educational Plan





# Building Upon

- Current Innovation Agenda and Programming
- School Improvement Plan
- DRAFT Education Plan
- Other Sources?





# Any renovated or New School Will Have...

- ADA Compliance
- Safe Entry and Security Features
- Thermal Comfort (Heating and Cooling)
- Modern Technology and Furniture
- Well-Sized Classrooms  
with Natural Light





# Any renovated or New School Will Also Have...

- Indoor/Outdoor Connectivity
- Push-In Special Ed (Breakout Rooms)
- Safe Drop-Off and Pick-Up
- Sustainable Building Features
- Adequate Number of Distributed Bathrooms and Gender Neutral Bathrooms





# Overarching Themes

- Use every square inch of the building
- Create flexible and multi-use spaces
- Extend learning beyond classroom walls
- Build synergy and connectivity between varied spaces
- Define learning clusters and communities





# Instructions



# What three words best describe the culture of teaching, learning, and community at the Franklin Elementary School?





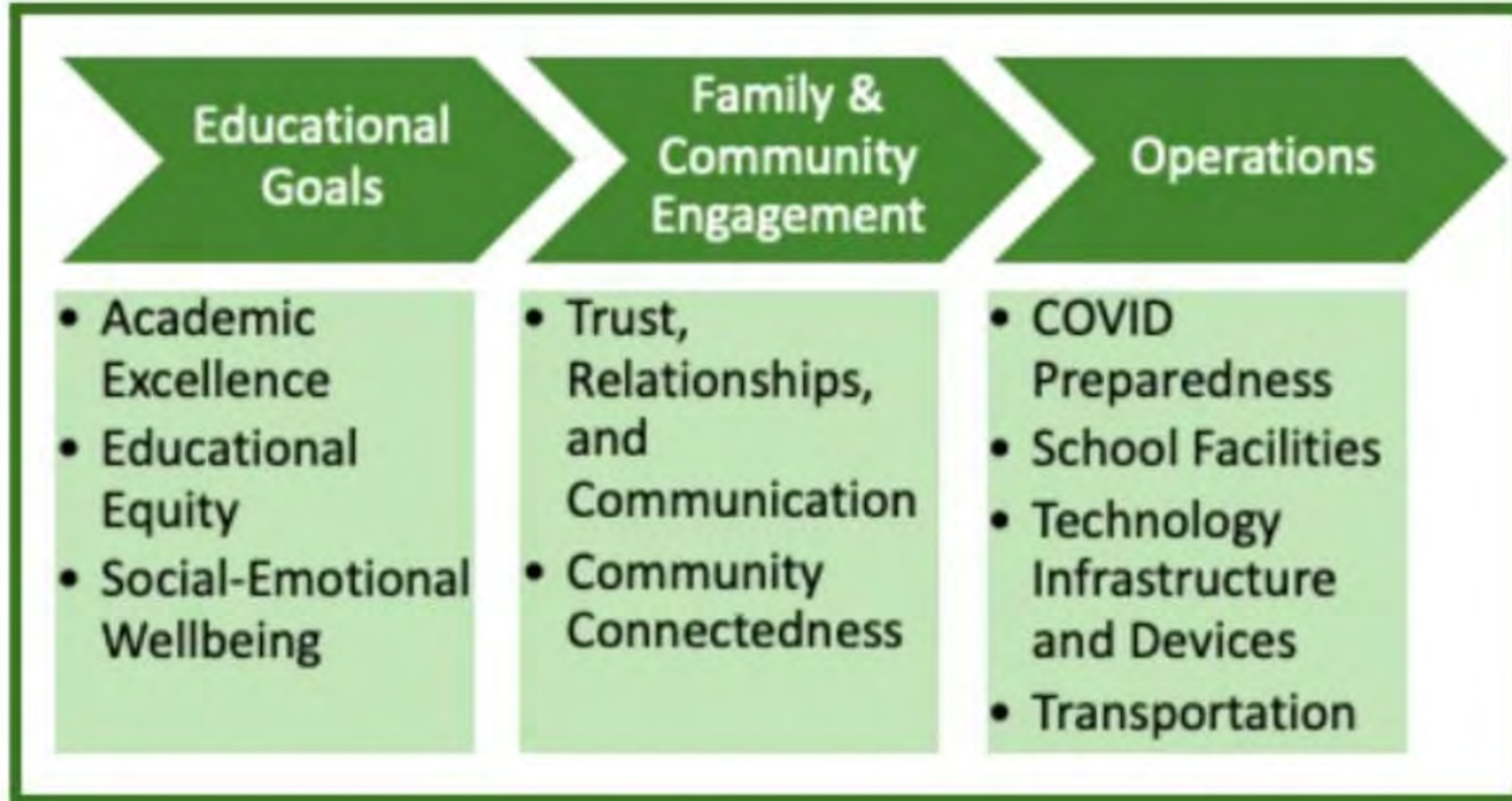


Franklin Elementary

# Key Priorities



# Educational Priorities





# Educational Delivery

*What do your district and school value?*

*Where do you want to be?*

Teacher-Centric



Student-Centric

Passive Learning



Active Learning

Classrooms



Flexible Learning  
Environments

Conventional  
Technology



1:1 Technology  
Environments

Individual



Collaborative

Subject-Based



Project-Based

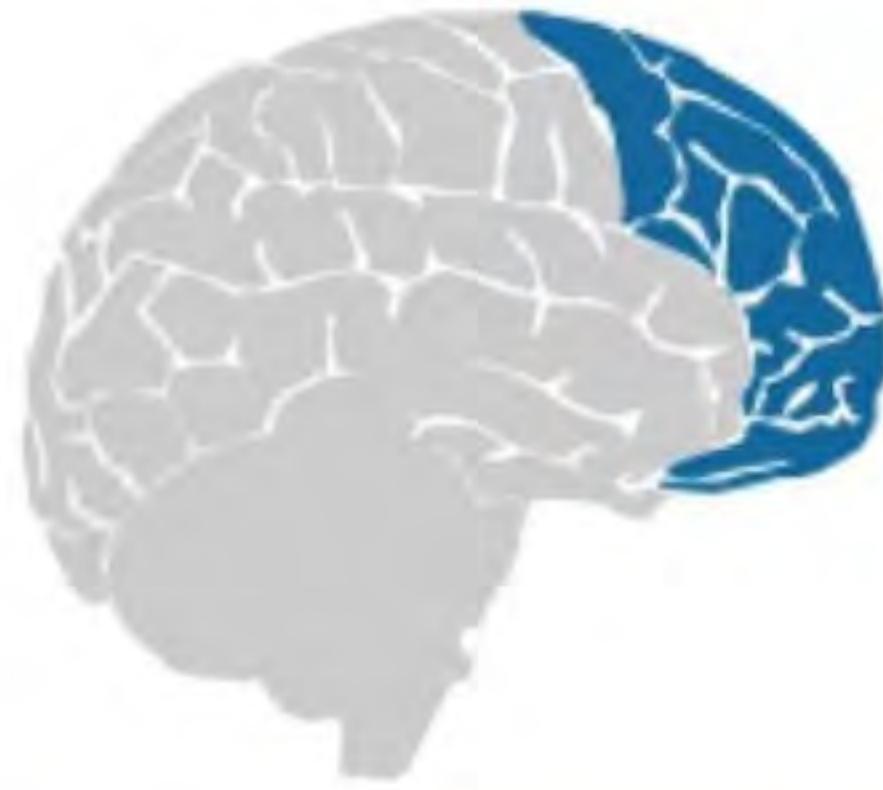




# Universal Design for Learning



**Recognition Networks**  
The “what” of learning



**Strategic Networks**  
The “how” of learning



**Affective Networks**  
The “why” of learning

Multiple Means of **Representation**, **Expression** and **Engagement**

- Varied Delivery Methods
- Hands-On Learning
- Action and Expression





# Social Emotional Learning



- Character education
- Growth Mindset
- Mental health
- Mindfulness
- Resilience and Grit
- Classroom management

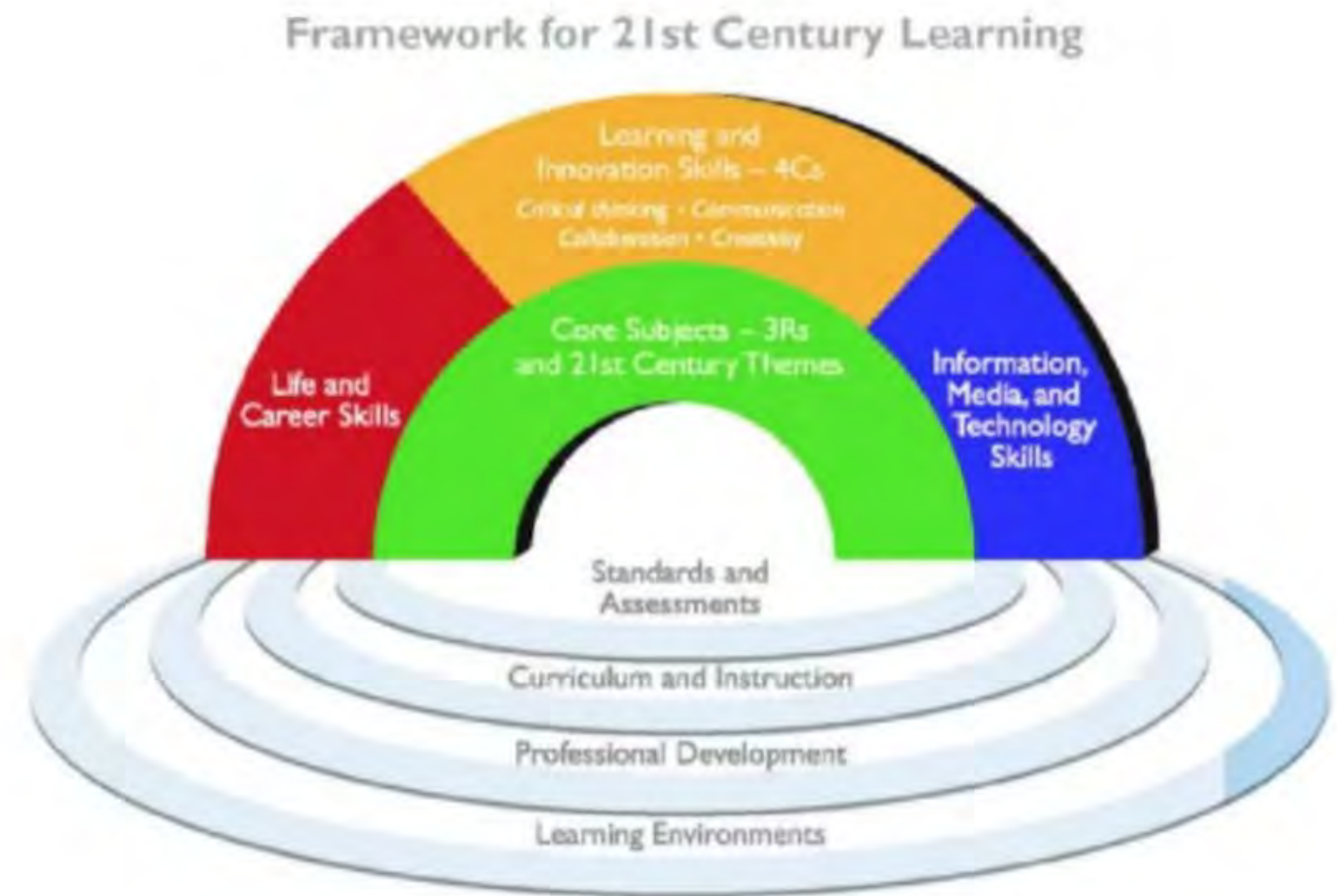




# Partnership for 21<sup>st</sup> Century Skills

## The 5 C's

- Critical Thinking
- Communication
- Collaboration
- Creativity
- Citizenship





# What are your top EDUCATIONAL priorities for the Franklin Elementary School?

collaboration, differentiation

Interventions

project based learning, time to meet,

Making every student feel inclusive

Outlets and storage. Ability to share/project student ideas on a board wirelessly.

teamwork between students- access for all-

An inclusive environment where all staff are well prepared to meet the diverse needs of students and there is space to make that happen whenever needed.

Fitting in no matter the need

Anti-racist, inclusive, joy, exploration, constructivist



# What are your top EDUCATIONAL priorities for the Franklin Elementary School?

small group learning, individual service and support, mental health and wellness

Rebalance the proportion of teacher talk and student talk. More play as learning.

adequate space for large and small groups

Meeting the needs of all students

having reliable technology

spacing to allow for efficient teaching and multiple types of learning

Having varied learning environments so that the needs of all students can be met.

equitable working technology that is accessible and visible to all students, space for individualized learning

Successful and meaningful inclusion for students with a wide range of disabilities.



# What are your top EDUCATIONAL priorities for the Franklin Elementary School?

SEL Intervention collaborative partnerships and group push in SPED

individualized student work/needs and special services, accommodations, safety priorities

safety

Students have a learning space that enables them to meet their potential (learn in the way that is best for them)

Being on the same page as the students on all matters

Teaching to the individual, creating safe spaces, building community

Scheduling that allows for a continuum of services

Academic and social-emotional learning blended

inclusive environment





# What are your top EDUCATIONAL priorities for the Franklin Elementary School?

Relationships and collaboration

Spaces to give students everything they need

Creating a sense of community among all students and staff

Centering creativity as well as building individual responsibility over learning. Students encouraged to be independent and responsible intrinsically.

I think organization is essential.

Project based learning  
Technology usage  
Collaborative meeting spaces  
Discovery and investigation

A space for new moms

intervention, inclusiveness, common planning time, more play and exploration

safe spaces, inclusion and making sure SEL needs are taken into consideration





# What are your top EDUCATIONAL priorities for the Franklin Elementary School?

social emotional learning

Educational priorities inclusive, including not just one race.

Better communication between teachers and support staff

Supporting student growth as critical thinkers and consumer of information, and growth as readers (helping them see themselves and their place in the world, and understand others might have different experiences).

play based learning, inclusion, working in a way that meets students needs not as whole class

break spaces

meeting all student needs and teachers having the tools they need to meet needs

Inclusive classrooms Spaces that fit all students comfortable and allow for small groups Easy access technology

Spaces where kids are comfortable and can focus on learning



# What are your top EDUCATIONAL priorities for the Franklin Elementary School?

Giving each child the support they need to feel successful

individualized learning sensory spaces

working heating/cooling systems

Bright, welcoming and warm Clean Organized STORAGE

Outlets. Wireless sharing of ideas to a whiteboard.  
Interactive whiteboards back to smartboard level not what we have now.

calming space for students and a calming space for adults

more open space & storage space to tuck things away

A nice and comfortable staff room

Lots of windows, natural light, not florescent lighting, calm space, combo of soft and hard furniture, seating in hallways, cabinets, sinks in classrooms,



# What are your top EDUCATIONAL priorities for the Franklin Elementary School?

Parking

Water fountains that work

A sink in each class is helpful in so many ways

Nice bathrooms

A space for new moms

open spaces, places for students to go when they can't be in class

speakers that project outside so students/teachers at recess can also hear

Designated pumping room for new moms

Compostable



# What are your top EDUCATIONAL priorities for the Franklin Elementary School?

sinks in every room

Communal spaces

STORAGE

Lockers for all students in the hallway

Kitchen appliances in teachers room

classrooms that don't echo

Outdoor learning space

outdoor classrooms

Pavillion with picnic tables (permanent)



# What are your top EDUCATIONAL priorities for the Franklin Elementary School?

A clock facing the playground

Spaces large enough for community gatherings

more picnic tables for eating snack outside

Parking

Parking

Outdoor learning setups

intercom speaker that can be heard outside

garden

warm of the topa colored walls and floors



# What are your top EDUCATIONAL priorities for the Franklin Elementary School?

air flow

two pronged outlets

not enough office space or meeting space

water quality and access

outlets (3)



# What are your top ARCHITECTURAL priorities for the Franklin Elementary School facility?

Light

Storage

Open spaces

Storage

Sensory spaces on every floor

Walls that double as white boards

extra spaces for small groups, testing, student breaks

Outlets

bathrooms close to classrooms



# What are your top ARCHITECTURAL priorities for the Franklin Elementary School facility?

Safety

Breakout spaces

All bathrooms gender neutral

Built in sensory opportunities

More whiteboards

Break out spaces across the building

classroom storage!

Room to move

Light



# What are your top ARCHITECTURAL priorities for the Franklin Elementary School facility?

walls that don't crumble and you can stick things too

increased wifi capability

Large meeting space for whole class

Break spaces

A bright cheerful environment that is inviting, spacious, and modern

Breakout spaces

space for small groups

Small group meeting spaces

Having plenty of space for deescalation



# What are your top ARCHITECTURAL priorities for the Franklin Elementary School facility?

More space and natural light, safe break out rooms and more room for social emotional learning, safer outdoor play area

Physical accessibility for all students and adults who need to access the building

Green, green, green, truly sustainable, green

Storage

quiet spaces where noise doesn't travel, storage/organizational spaces where materials and boxes aren't out and all over the place

Connectedness among the various parts

Small group spaces

ADA compliant access between floors;

a fully accessible playground



# What are your top ARCHITECTURAL priorities for the Franklin Elementary School facility?

indoor sensory pathway designated space

Temperature

functioning heating and cooling system

More bathrooms

great light

technology, space, play space separate from learning, loud/quiet spaces, bathrooms!, storage, kids accessible tools,

Sensory room

an art room with sinks

Meeting spaces



# What are your top ARCHITECTURAL priorities for the Franklin Elementary School facility?

water fountains that work

break out spaces, more bathrooms close to classrooms

a big enough teachers room

Bigger classrooms with more storage, resulting in less clutter within the classroom.

auditorium type space

space, internet, bathroom

a space for new moms that includes a sink, storage, refrigerator, comfortable seating, private/individual spaces, outlet access

I would like to have at least two smaller classrooms for EL students with storage and walls on which I could hang many items (maybe all cork board).

Flexible performance spaces, bathrooms within or nearby specialist spaces



# What are your top ARCHITECTURAL priorities for the Franklin Elementary School facility?

Office space that can be used flexibly

Solid floors -that don't echo

an elevator that reaches all levels

Flexible and bright spaces

spaces that prioritize students receiving special education services privacy and confidentiality while also being easily accessible from their main learning space

daily living skills area

Pool

space for small groups- intervention and spedstorageoutletsspace for PD during the daySpace for nursing mothers

safety measures - doors that lock, etc



# What are your top ARCHITECTURAL priorities for the Franklin Elementary School facility?

noise reduction, outlets, microphones to project voices, technology charging stations, pumping stations, GREEN, solar powered

Garden classroom space

AC

Reliable heating and cooling

oven in teachers room

Wheelchair friendly playground

adult bathrooms

larger classrooms to allow for small group learning

convenient outlets, cubbies, small group spaces, all bathrooms gender-neutral, gardens



# What are your top ARCHITECTURAL priorities for the Franklin Elementary School facility?

dimnable lights

Not ugly on the outside

meditation area

multiple sensory rooms

Adequate and appropriately sized shelving for a robust library collection, with enough space for teaching and student work, office and storage space, cozy areas for reading and working, centrally located check out area

Beautiful building

Make sure all instructional spaces have windows.

Rooms big enough for larger groups

flexible seating



# What are your top ARCHITECTURAL priorities for the Franklin Elementary School facility?

breakout spaces for small groups and individual learning

comfortable teacher meeting spaces with couches, meditation areas, calming music, massage therapist

Flags back around building

a building that accommodates a potential increase in enrollment

spaces that reflect where students are from

community garden

Accessible sinks and hardware

A secure field with fences where kids can't leave/roam off

Safely situated relative to street



# What are your top ARCHITECTURAL priorities for the Franklin Elementary School facility?

Indoor recess space

Gym with it's own entry for voting

no storage

lack of space for large class sizes, no storage, mold, dampness

lack of water fountains

It gets so hot, looks like I'm coming from the gym and not work



# What are your top **COMMUNITY** priorities for the Franklin Elementary School program and facility?

Welcoming and usable leisure space

inviting and welcoming environment

Lots of display spaces and display cases

a large space for the whole community to gather

shade outside on the big playground

easy access and clear pathways from one area to the next

Safe

Parking

well kept playground/outdoor space



# What are your top **COMMUNITY** priorities for the Franklin Elementary School program and facility?

Adult bathrooms

Culturally responsive

tables to eat at outside

large enough spaces for whole school or community events

many entrances from different directions that are accessible to all students and families

Ability to host large audiences for performances, separation from learning spaces, display opportunities

Community artwork

parking

parking for everyone



# What are your top **COMMUNITY** priorities for the Franklin Elementary School program and facility?

Space for pre and after school for more students.

playgrounds for K-2 and 3-5

Space for parent meetings with principal, teachers, and SPED. Covered spaces for drop off/pick up. Reduced stairs.

Comfortable meeting spaces

consideration to limited access to the rest of the building (confidential files/materials) for community events after hours

parking

outdoor learning space (social and academic), safe/easy drop off and pick up

if the space is going to be shared with the town have clear signs about rules/when people can come with their dogs/etc

alternative spaces for camps so that classrooms are not destroyed.



# What are your top **COMMUNITY** priorities for the Franklin Elementary School program and facility?

consider driveway placement

helipad for the principal

Space for guest speakers and families to gather (like author visits, book fair, etc)

That all spaces of the school property be available and controlled by the Franklin community during the school day

welcoming meeting space for special education/all meetings

BIGGER PARKING

Parking

parking lot that accommodates all staff

Outdoor tables and benches



# What are your top COMMUNITY priorities for the Franklin Elementary School program and facility?

Parking for staff and visitors

Staff parking

security of materials AND physical space

Consult with people from the community on this - not just us

Welcoming Entrance with plants, artwork, clear sight line for office staff, EV Parking charging stations, PARKING

spaces that represent our student community

get voting out of the schools

flags

Display cases with clear shelving (to be seen by ALL students)





# What are your top **COMMUNITY** priorities for the Franklin Elementary School program and facility?

Courtyard space, community gardens,

Heated blacktops to reduce ice in winter  
and increase play space

It is not without character



# What do you consider the main STRENGTHS of your current facility?

THE STAFF INSIDE IT

sprinklers

air conditioning

never gets cold

classrooms good size mostly

Large cafeteria/communal space

it's character

Dave!

The custodian





# What do you consider the main STRENGTHS of your current facility?

free class pets

looks beautiful on the outside, a "classic" school building

the K wing/pentagon

It's location

Character on the exterior

The people inside

it has walls and ceilings that keep the rain and snow out

It's still standing

The field space is plentiful





# What do you consider the main STRENGTHS of your current facility?

STRENGTHS-spelling

High ceilings

the fields

Architectural features, especially over the front door

Comfortable

things generally work

I can open the window with support from the custodian!

Dave. Classic look, staff, large field, it is standing, windows open

Falling tiles in the gym :)



# What do you consider the main STRENGTHS of your current facility?

high ceilings

material cubbies & built in storage

big playground

two playgrounds

close to other classrooms

ITSA SAUNA

heating/cooling!!

Parking

Air conditioning





# What do you consider the main STRENGTHS of your current facility?

The climate control

Meeting spaces

Classroom size

Parking

Lunch room space

Physical space

Handicap accessibility

Temperature

bathrooms





# What do you consider the main STRENGTHS of your current facility?

The H shape makes things feel so far from one end to the other

no space/ safe water? no hot water in some sinks

Asbestos

MICE

mice

Too hot in the winter

No storage in classroom

No space for student belongings in the hallway

Staff room is very small





# What do you consider the main STRENGTHS of your current facility?

Peeling walls



# What do you consider the main CHALLENGES of your current facility?

physical space

parking

Inadequate space

Not handicap accessible

space

Parking

The custodian

classrooms aren't big enough

art room has no sinks





# What do you consider the main CHALLENGES of your current facility?

Parking

lack of adult bathrooms

Temperature

Parking

uncomfortable in the warm months

dated

flow of the building

No AC

long walks/lack of central location for library, caf, gym





# What do you consider the main CHALLENGES of your current facility?

parking

Layout difficult to navigate

No temperature regulation

Climate control, inadequate storage

not enough office space

Not accessible in many areas

trouble adjusting heat

Parking lot, outdoor space is very unsafe,

ITS A SAUNA





# What do you consider the main CHALLENGES of your current facility?

lack of both small and large meeting spaces

lack of technology i.e. power outlets, No AC,

Heat and cooling

entries are not always accessible

Temperature

echoing in the halls

Heating.

No AC in the gym

Inadequate space to meet the variety of needs



# What do you consider the main CHALLENGES of your current facility?

parking

Leaking ceilings

parking

Nothing seems to work as it should

Heating/cooling differences, shared spaces are not central

parking

parking lot

Staff bathrooms and parking

Outlets



# What do you consider the main CHALLENGES of your current facility?

hooks for student belongings rather than cubbies, not enough space for their things

Asbestos

parking options

bathrooms accessible and useable

cafeteria space

Humidity

dated equipment/ storage equipment

not enough storage

Not safe in many ways



# What do you consider the main CHALLENGES of your current facility?

meetings at cafeteria tables, these seats are the worst

the distance to the play area -big playground

Lack of breakout spaces

The H shape makes things feel so far from one end to the other

still not sure about safe airflow to keep us safe from all viruses

Not enough parking

working conditions

plugs in cubby space, only one on each side of room, not all accessible

the floors





# What do you consider the main CHALLENGES of your current facility?

cramped office/lack of privacy

Not enough printers

Air conditioning, lack of storage, small rooms, furniture, Parking, climate control, need office space, need teacher collaborations, ICE on playgrounds

no air ventilation

no AC

the colors are not pleasant

lack of technology

doors not working, windows floors tiles cracks

heat and cooling has a mind of its own no matter the season





# What do you consider the main CHALLENGES of your current facility?

lack of storage, temperature regulation,

Not enough breakout spaces

parking

A lot of IT issues

Leaving the parking lot

inadequate teachers room

Crumbling walls

mice

you either freeze or sweat depending on your location in the building



# What do you consider the main CHALLENGES of your current facility?

we can't control our own room thermostats

Mold, slippery

ability to clean thoroughly

More storage space and not having a door to the upstairs in the class room, plus the space is long instead of wide enough. Challenging to hang things on the wall. More bathrooms would be helpful. Too hot or too cold.

maximizing use of space

accessible to all abilities

Flooding library

no kitchen for school lunches





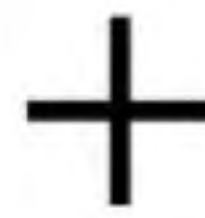
Franklin Elementary

# Design Patterns

for Future Ready School Facilities



# Make Sure to Jot Down the Ones You Love



You will be reacting to, rating and commenting on each batch of 9-10 patterns

This is about expanding your thinking about what is possible with regard the design of the renovated/new facility, and defining a common language of design priorities...



# Rate Every Slide



**LOVE IT!**



**GREAT IDEA**



**NOT SO MUCH**



**MAYBE**



It's the  
concept,  
not the  
details....





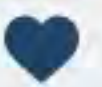
- There is a lot of overlap...
- You might like them all...
- You might want to change language used or add design patterns...



- We want to share a lot of ideas and see what sticks and what doesn't!



# Instructions





**Given**s



# New School Design Patterns

# Agile Classrooms



Ivan Smith Elementary – Tappe Architects



MLK Lower School - Perkins Eastman





# New School Design Patterns

## Flexible Furniture



Braintree East Middle School - MDS



Anzak Park Elementary - Sydney

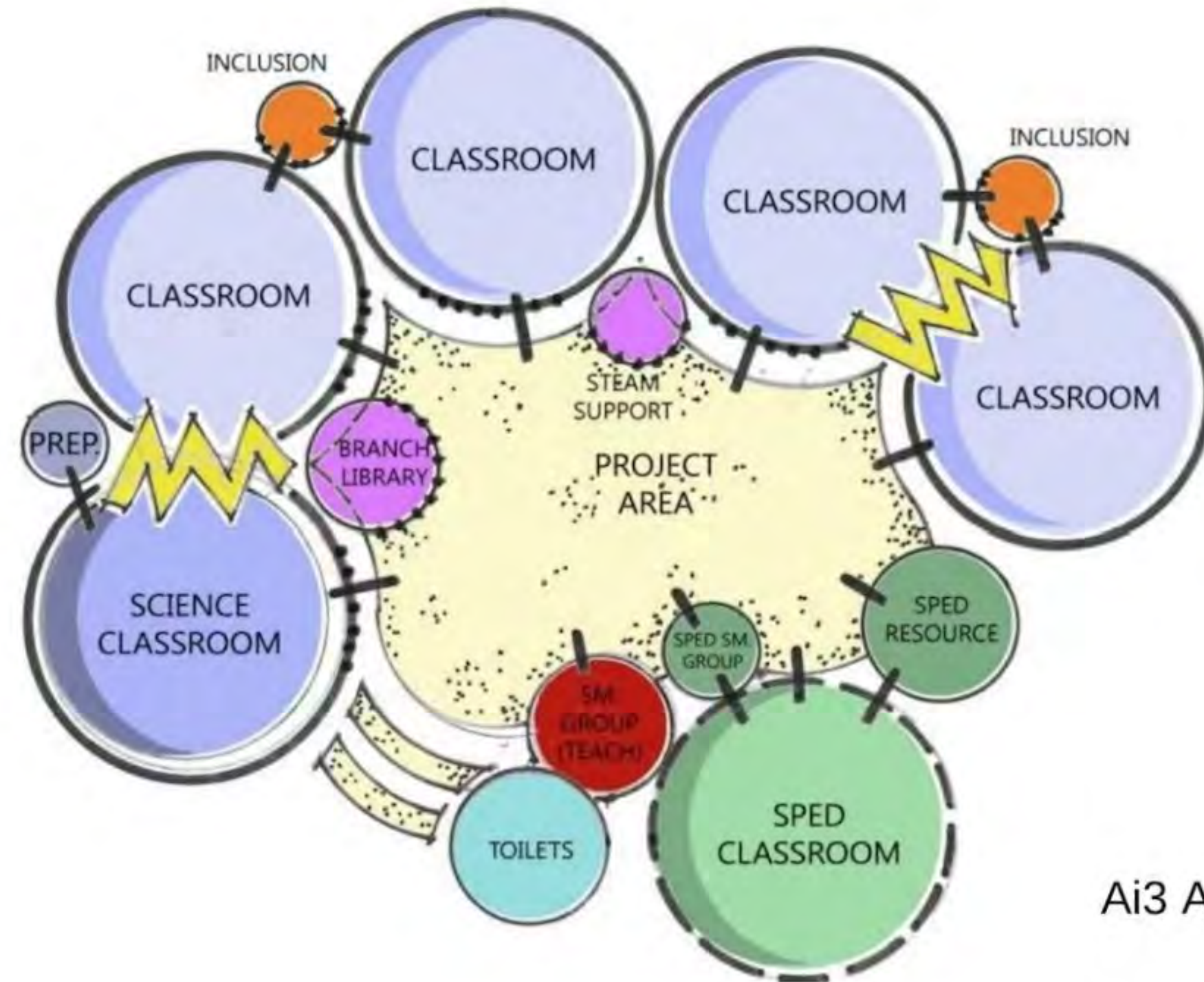


VS Furniture



# New School Design Patterns

## Push-In Special Education



Ai3 Architects



# New School Design Patterns

## Cafetorium Multi-Purpose Space



Jacobs Elementary – T2 with New Vista

Zervas Elementary – Perkins Eastman





# New School Design Patterns

## Community Access



Jacobs Elementary – Turowsky2 with New Vista



# New School Design Patterns

## Engaged Outdoor Play



Bourne Intermediate School – Flansburgh with New Vista

23



3





# New School Design Patterns

# Sustainability



13 7

❤️ 👍 👎 ?



# Rank these Design Patterns in order of the ones you are most excited about.





# Set 1



# New School Design Patterns

## Welcoming Arrival Safe Drop-off/Pick-up





# New School Design Patterns

## Greeting and Gatekeeping





# New School Design Patterns

## Wayfinding and Streetscapes





# New School Design Patterns

## Clusters of Learning



Hunking K-8 – New Vista with J.C.J



# New School Design Patterns

# Classroom Neighborhoods





# New School Design Patterns

# Classroom Zones



Collegiate School – Studios with New Vista



Brookline Heath School - MDS



# New School Design Patterns

## Good Storage/Cubbies

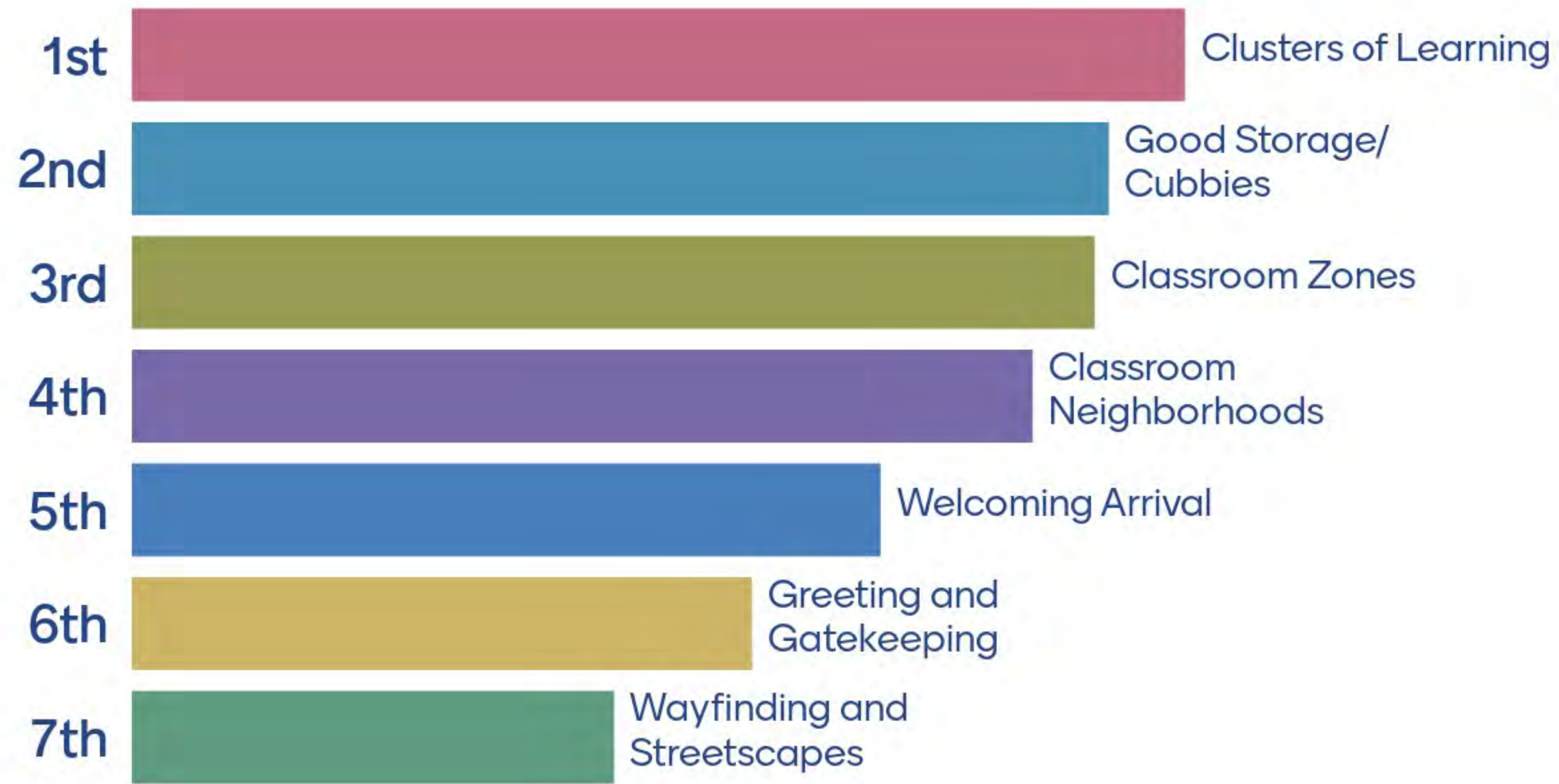


German International School – HMFH Architects  
Photo by Ed Wonssek Artworks

Brookline Lawrence School - MDS



# Rank these Design Patterns in order of the ones you are most excited about.





# Set 2



# New School Design Patterns

## Heart of the School





# New School Design Patterns

## Library Learning Commons



Gibbs Middle School - Finegold Alexander with New Vista

15



5



1





# New School Design Patterns

## Innovation Hub





# New School Design Patterns

## Collaborative Environments



Dunbar HS – Moody Nolan



Clyde Brown Elementary - Tappé Architects





# New School Design Patterns

# Gathering Hubs and Presentation Spaces



Groveland Elementary School – ATS&R Architects



McAulliffe Elementary - HMFH





# New School Design Patterns

## Professional Work Areas



Gann Academy Innovation Center - MDS

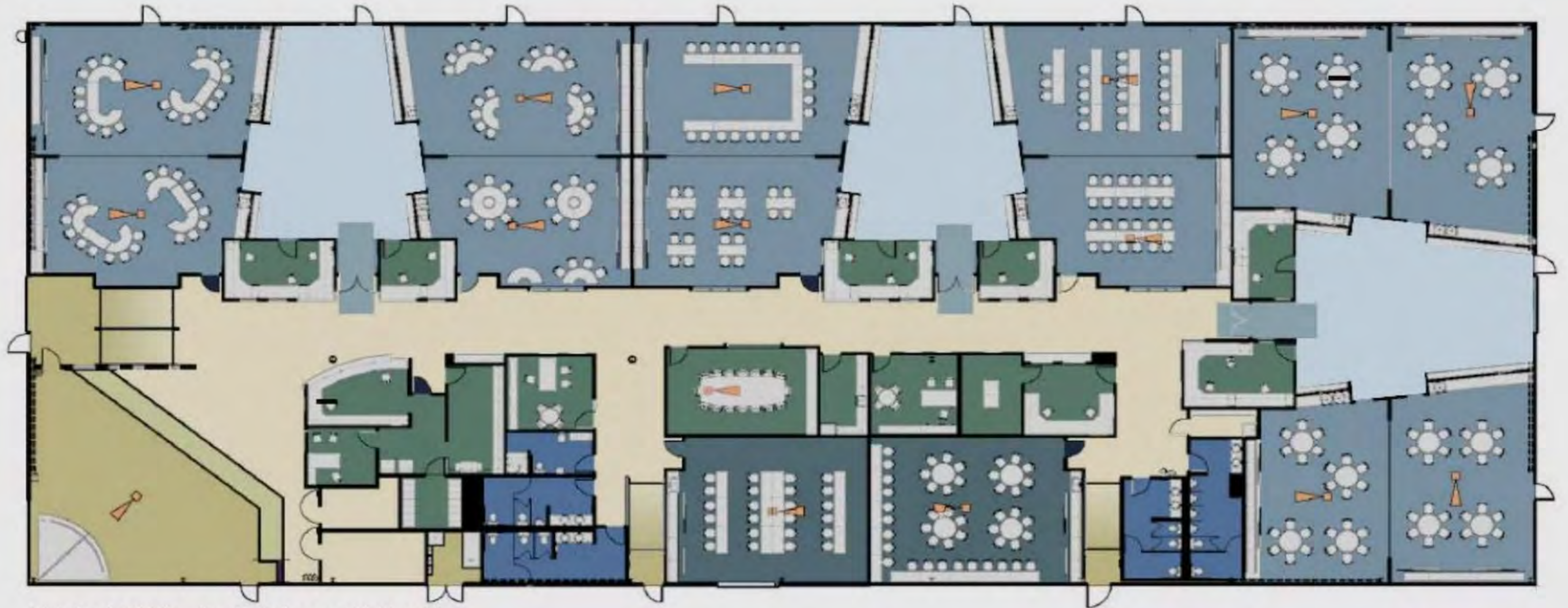


Boston Prep – Studio G



# New School Design Patterns

## Distributed Resources

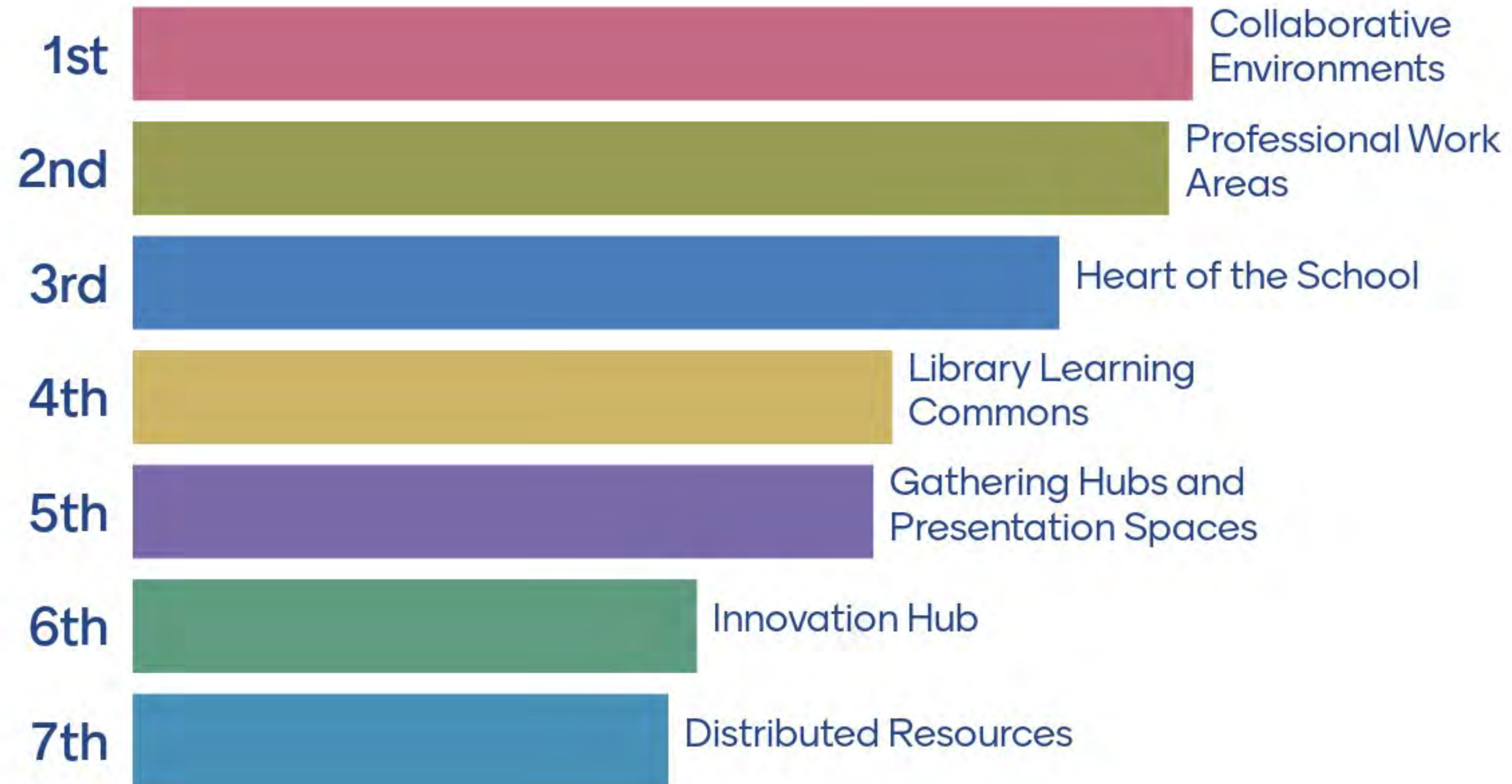


High Tech Middle - Carrier Johnson with New Vista





# Rank these Design Patterns in order of the ones you are most excited about.



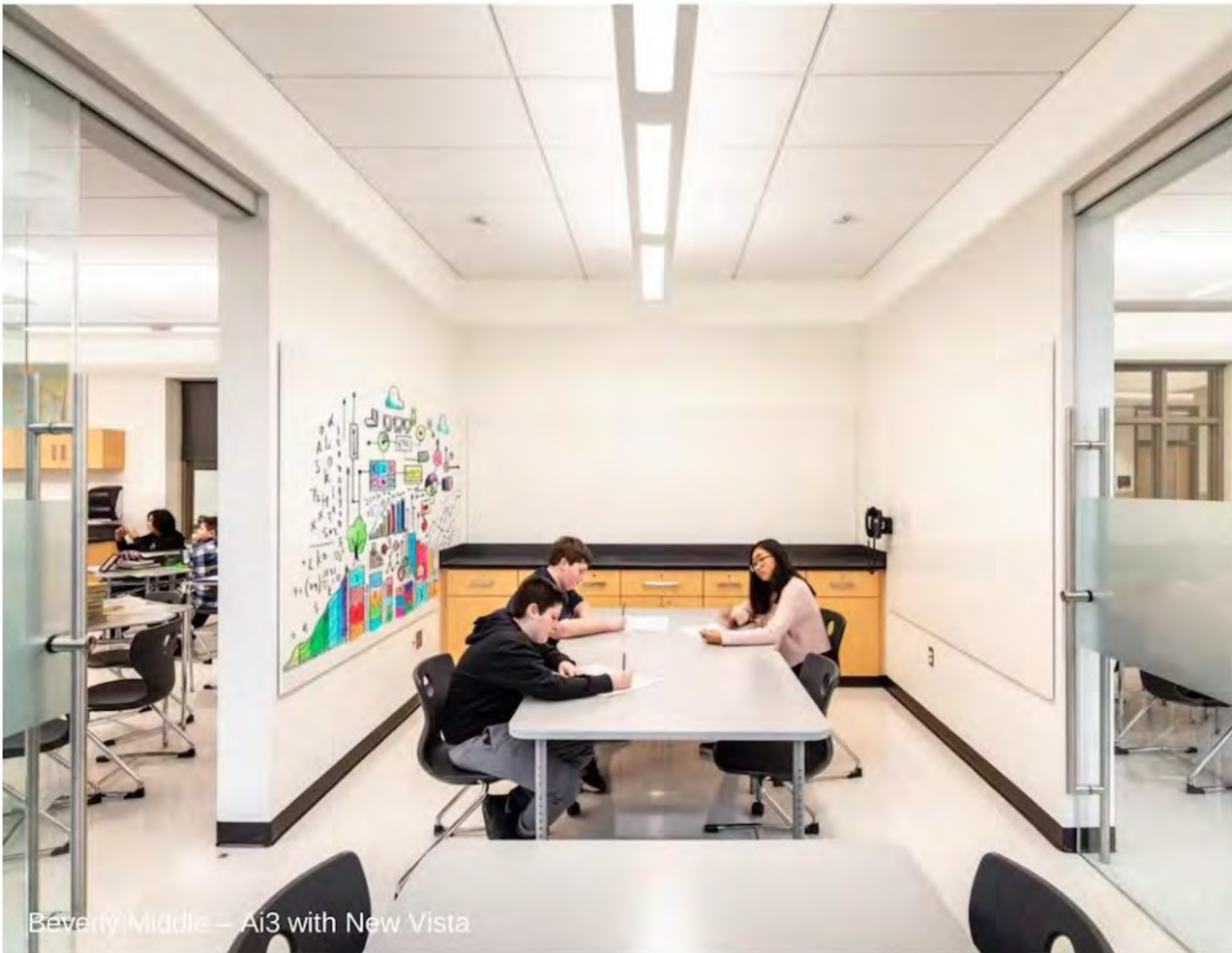


# Set 3



# New School Design Patterns

# Breakout and “Pull Over” Spaces



Beverly Middle — Ai3 with New Vista

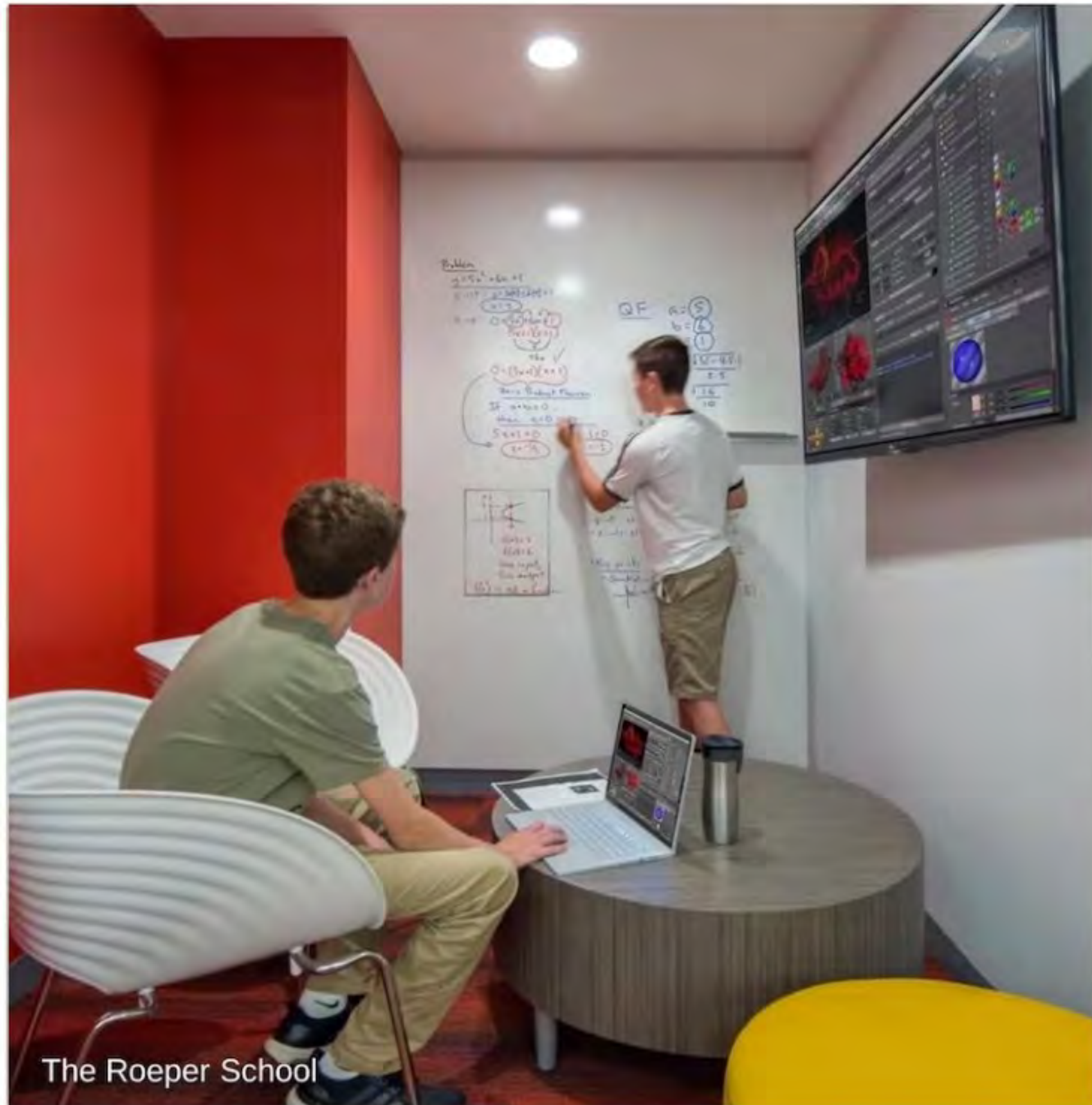


Kennedy Elementary School — DLA



# New School Design Patterns

## Nooks, Caves and Quiet Spaces



The Roeper School



Gann Academy - MDS



Zervas School – Perkins Eastman



MacAuliffe Elementary – HMFH

14 ❤️ 1 👍 2 👎 4 ?



# New School Design Patterns

## Hallway Learning



Carver Elementary School – HMFH Architects  
Photo by Ed Wonssek Artworks



Runkle K-8 - DPC/Perkins Eastman





# New School Design Patterns

# Branding and Identity





# New School Design Patterns

## Display and Exhibition



Chula Vista Elementary – Studoi E





# New School Design Patterns

# Visible Learning and Transparency



HTE North County – Studio E



Woodland Elementary – HMFH Architects  
Photo by Ed Wonssek Artworks



MIT Stata Children's Center – Studio G





# New School Design Patterns

## Outdoor Connections and Learning



Bancroft Elementary - SMMA



21



5





# Rank these Design Patterns in order of the ones you are most excited about.







Franklin Elementary

Break



# Small Group Design Pattern Prioritization

- Individually review the listing of design patterns (10 min)
- Share your priority patterns, then make a collective list of the top 8-12 patterns. Feel free to combine patterns and make up your own. You can include patterns from the list of "Givens" or not. (20-30 min)





Franklin Elementary

# Blue Sky Ideas





Blue Sky Ideas ...

Brainstorm

Brainstorm one or more Blue Sky Ideas and enter it/them into the Mentimeter prompt.

*5 minutes*



# Share your Blue Sky aspirational ideas here.

Incorporating the historical front of the building into the new design

garden where we can grow food then cook with it/eat it/compost it/ big teachers room for work and relaxation a building that reflects the diversity of culture/needs/etc of our community lots of natural light adequate storage maker space?

stay in current building during construction of a brand new building!

Hoping the the front of the building would be saved and included in the overall design

Greenhouse! We can grow things all year long!

I love the idea of learning throughout our community. I think about a garden classroom space surrounded by sustainable stadium seating that can be used for many purposes

storage for ALL of the materials

Stay in the current Franklin building during construction. A better flow for getting food in the cafeteria. Love the idea of the cafeteria/gym/stage connection for large community gatherings. Also outdoor cover for entry (weather)

An acoustically designed music room with enough room for whole class movement as well as zones for instrumental and technology based learning. Proximity to collaborate with other specialists and space to invite community members and families.



# Share your Blue Sky aspirational ideas here.

Storage for PE equipment.

heated blacktop areas outside to avoid dangerous ice situations.rooftop greenhouse garden.covered area outside for sheltered drop off and dismissal

A generously sized library with high ceilings and lots of natural light (with UV blocking), lots of kid-sized shelving, a centrally located circulation desk with counter space to work on large displays, an office with lots of storage, tables

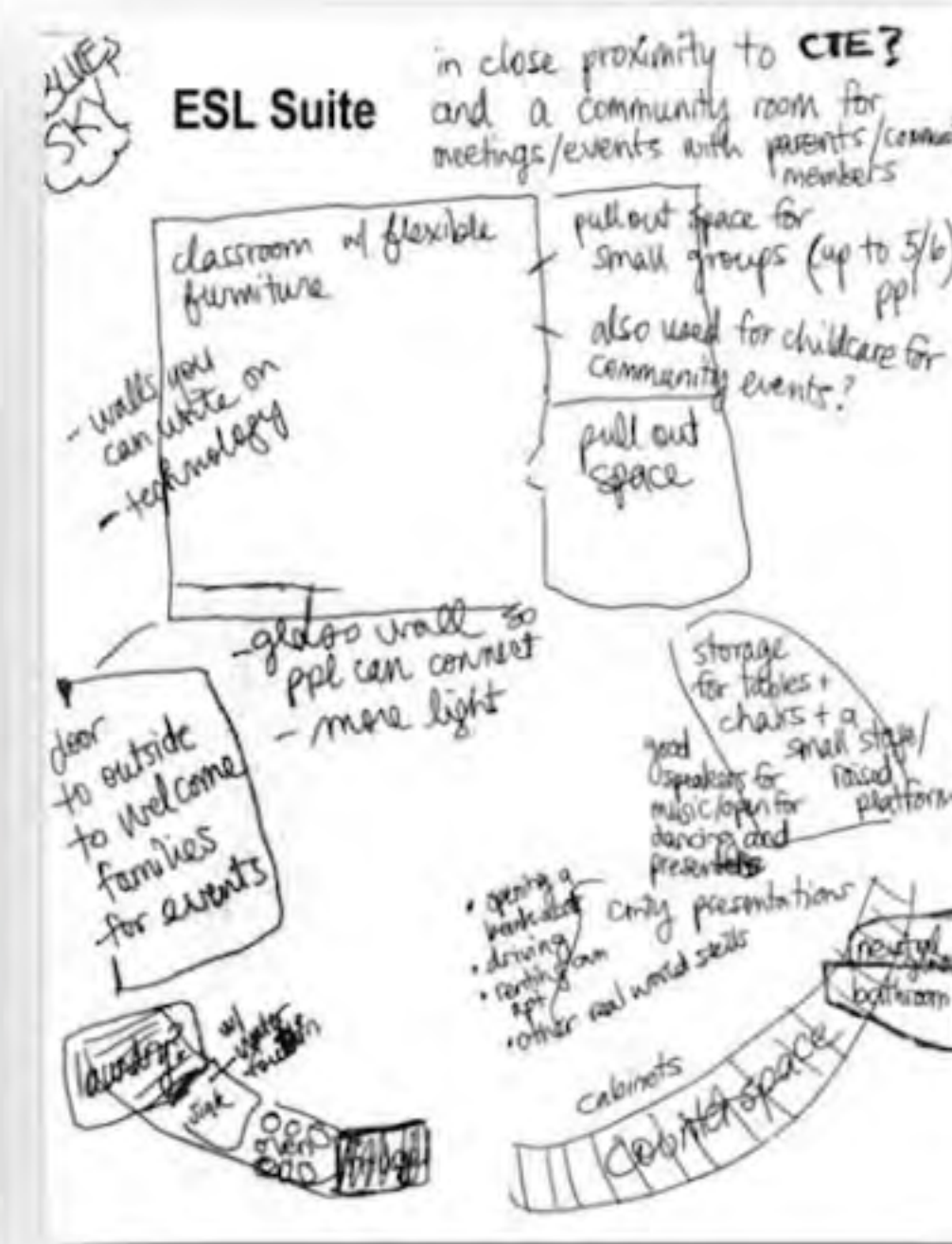
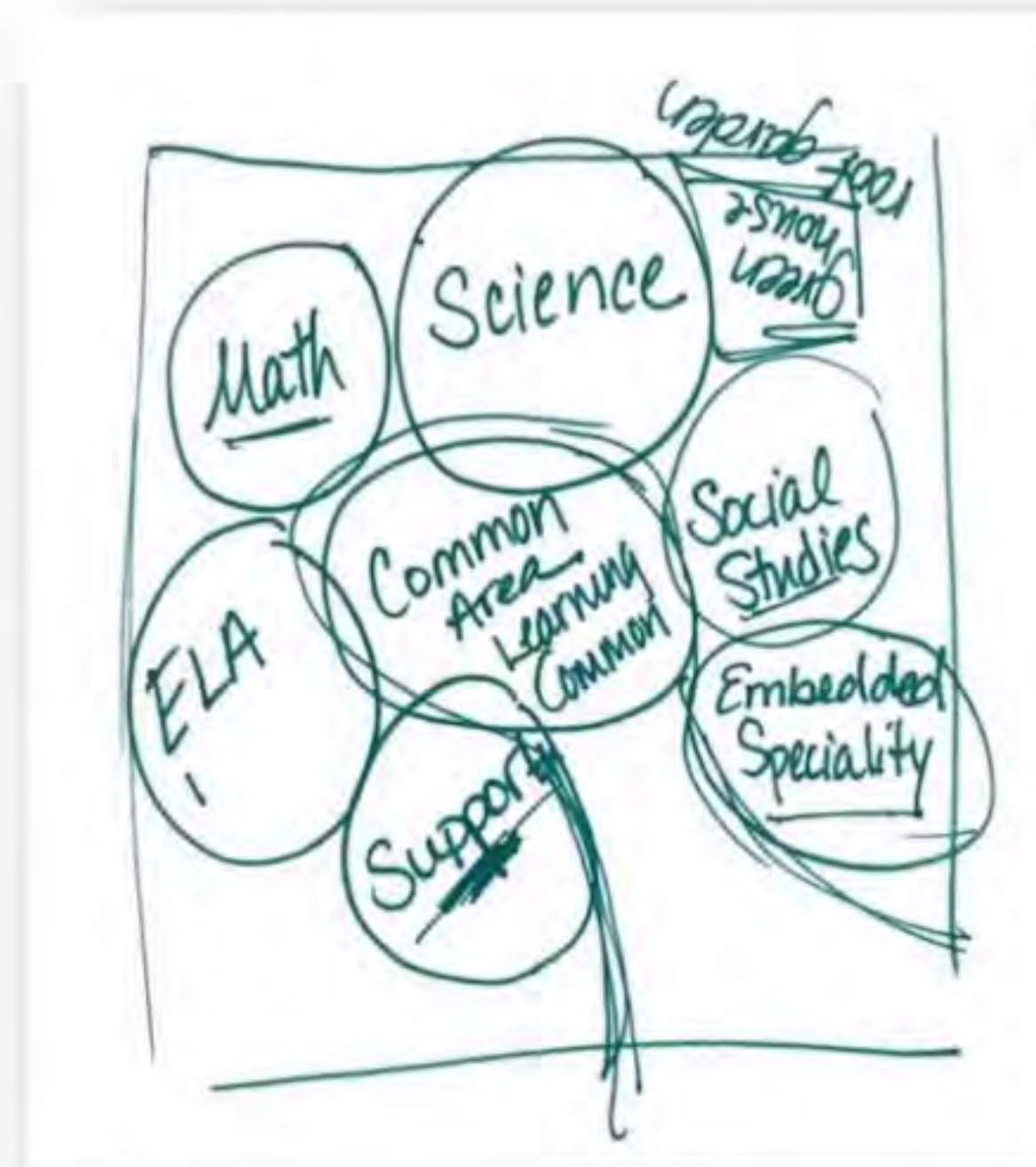


# Blue Sky Ideas ...

## Detailed

Take 15 minutes to describe and/or diagram one of your ideas in as much detail as possible

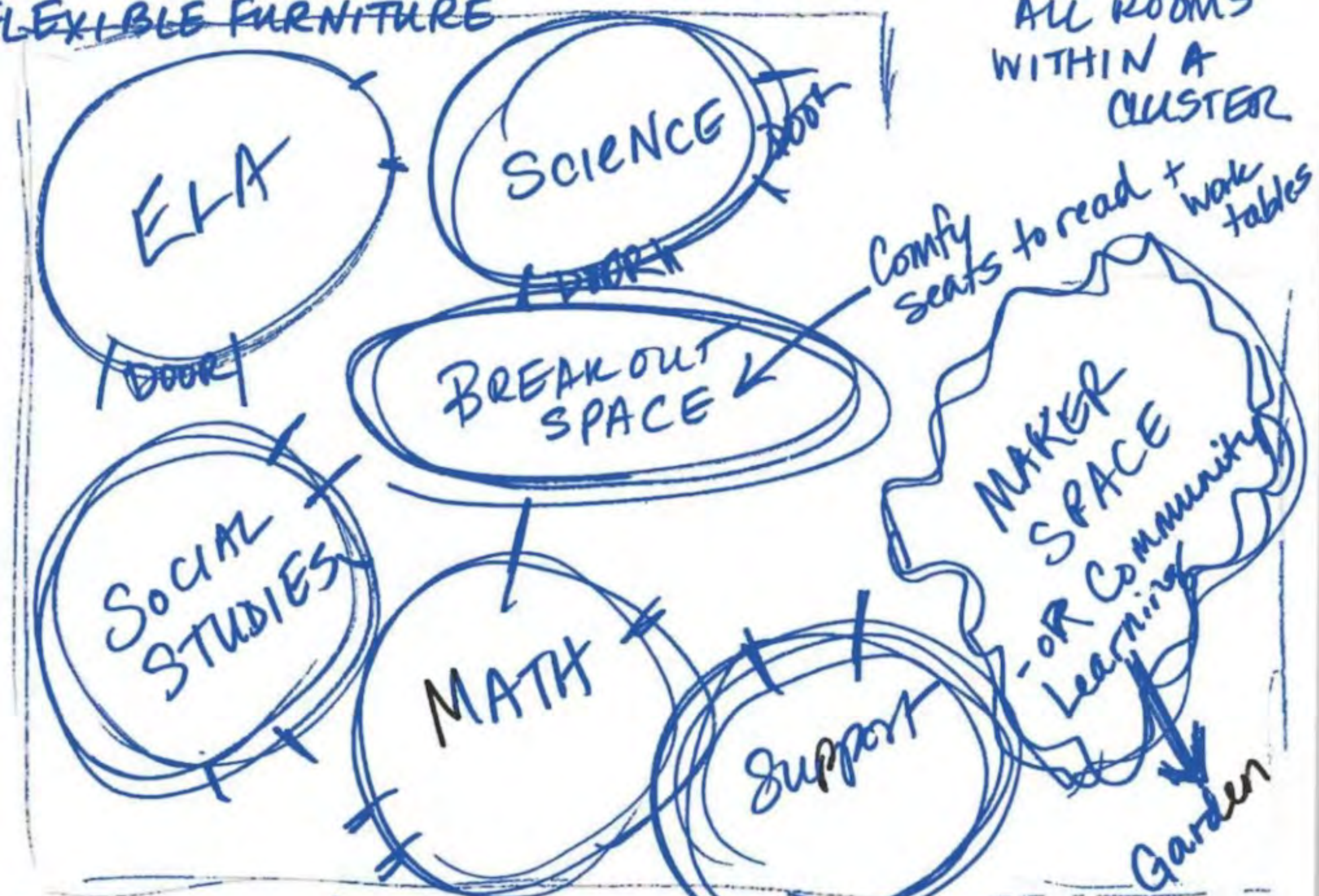
- Size
- Shape
- Use
- Furniture
- Lighting
- Color
- Occupants
- Etc.





Classroom Clusters - ABILITY TO TEACH WITH TEAM MEMBERS -> CROSS-CURRICULAR

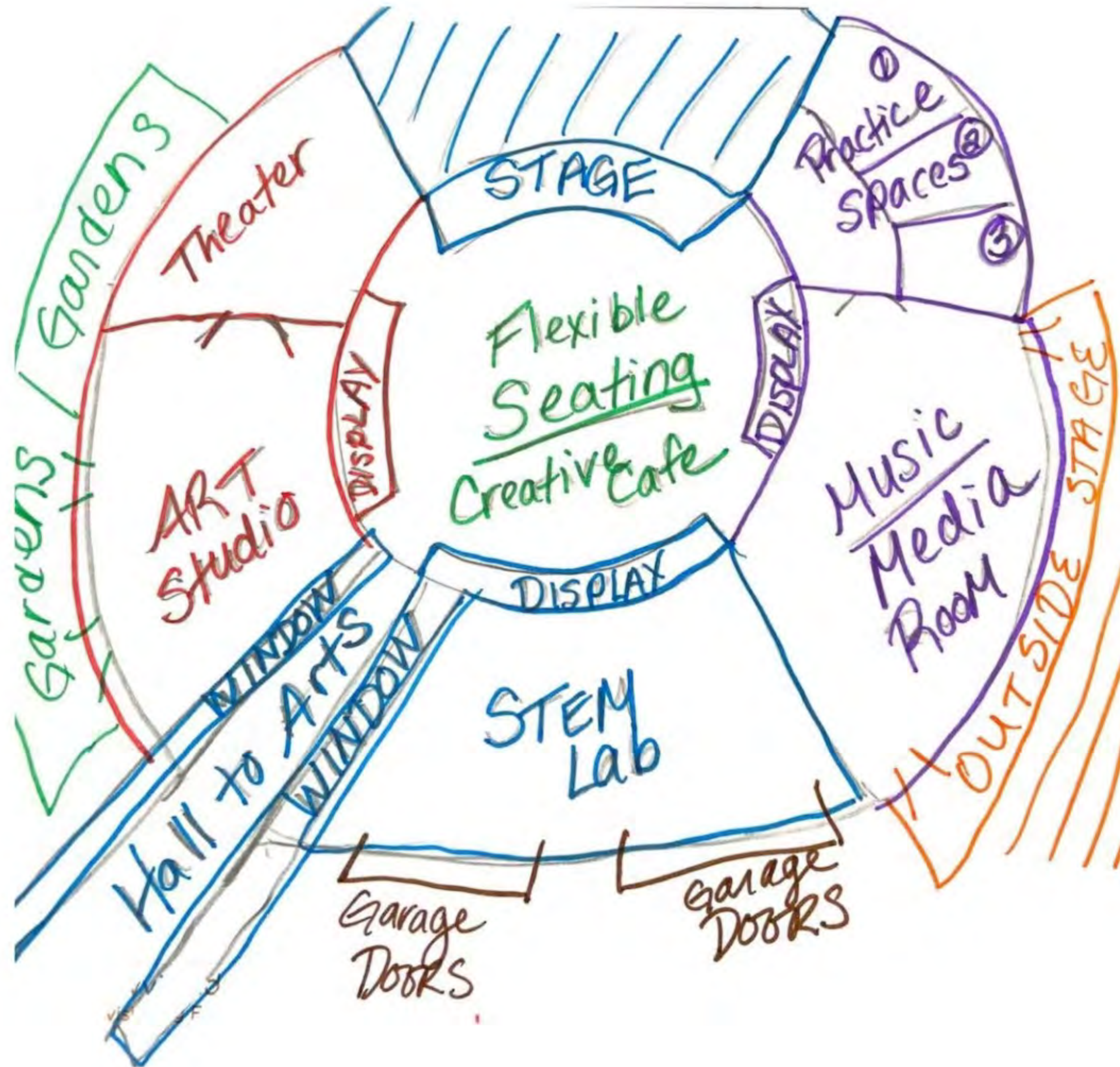
- \* LOTS OF NATURAL LIGHT
- \* FLEXIBLE FURNITURE
- WARM COLORS
- ACCESS TO ALL ROOMS WITHIN A CLUSTER



\* Furniture on wheels (Teacher desks... chairs, tables)

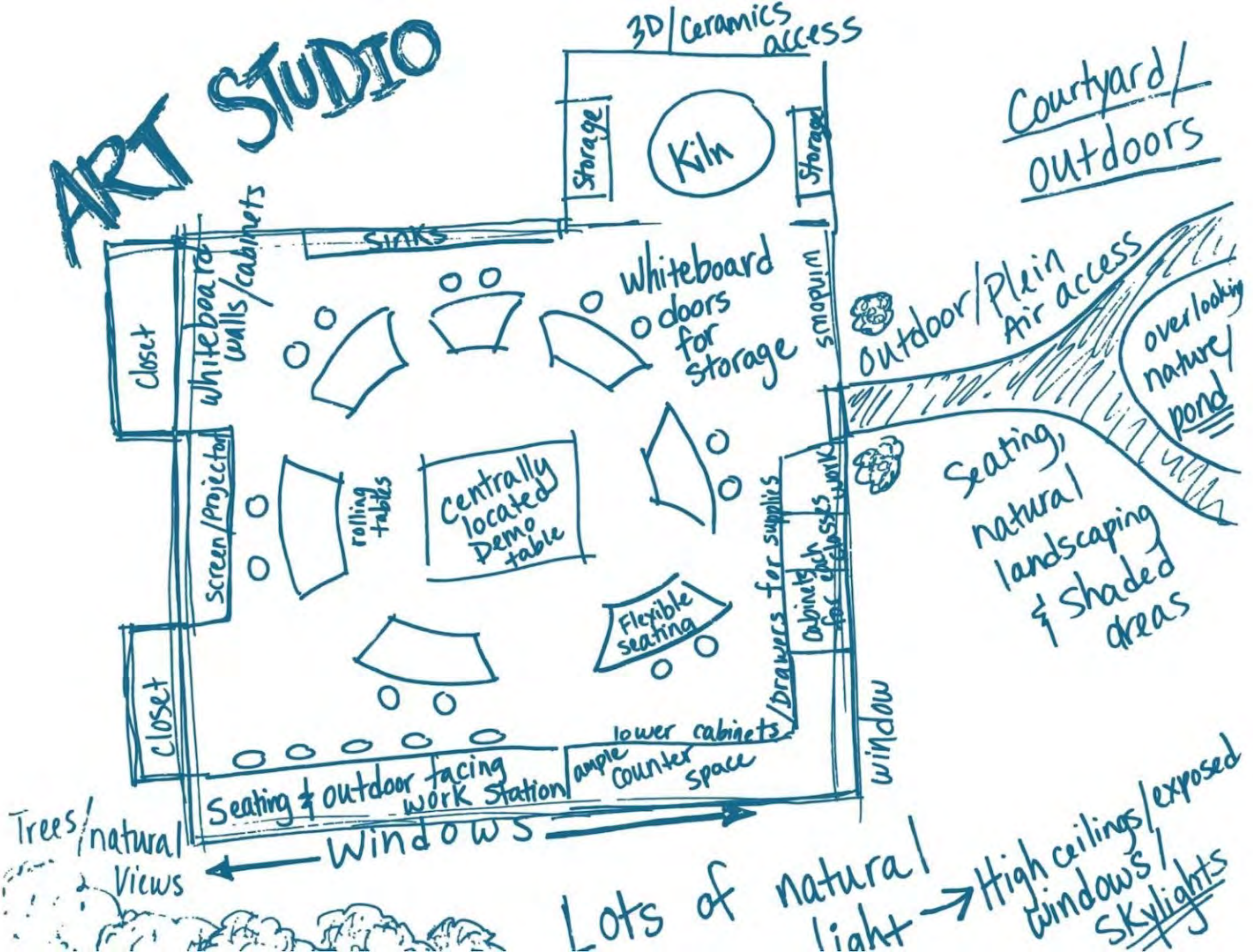
- Multiple clusters by grade







# ART STUDIO



Lots of natural light → High ceilings/exposed windows/skylights





Franklin Elementary

Diagram or expand upon  
your Blue-Sky Idea(s) and  
leave them on your tables





Franklin Elementary

Q & A