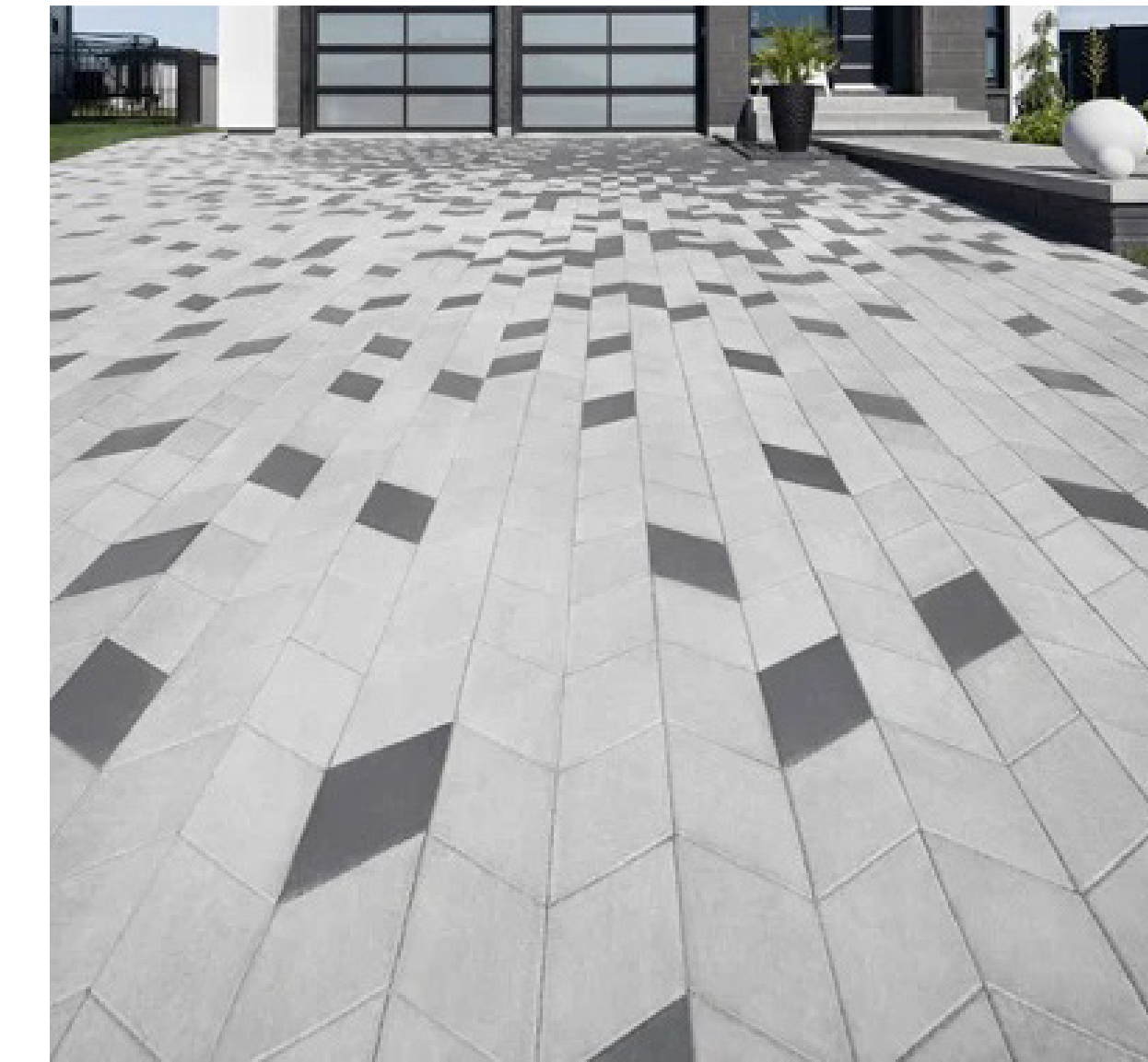
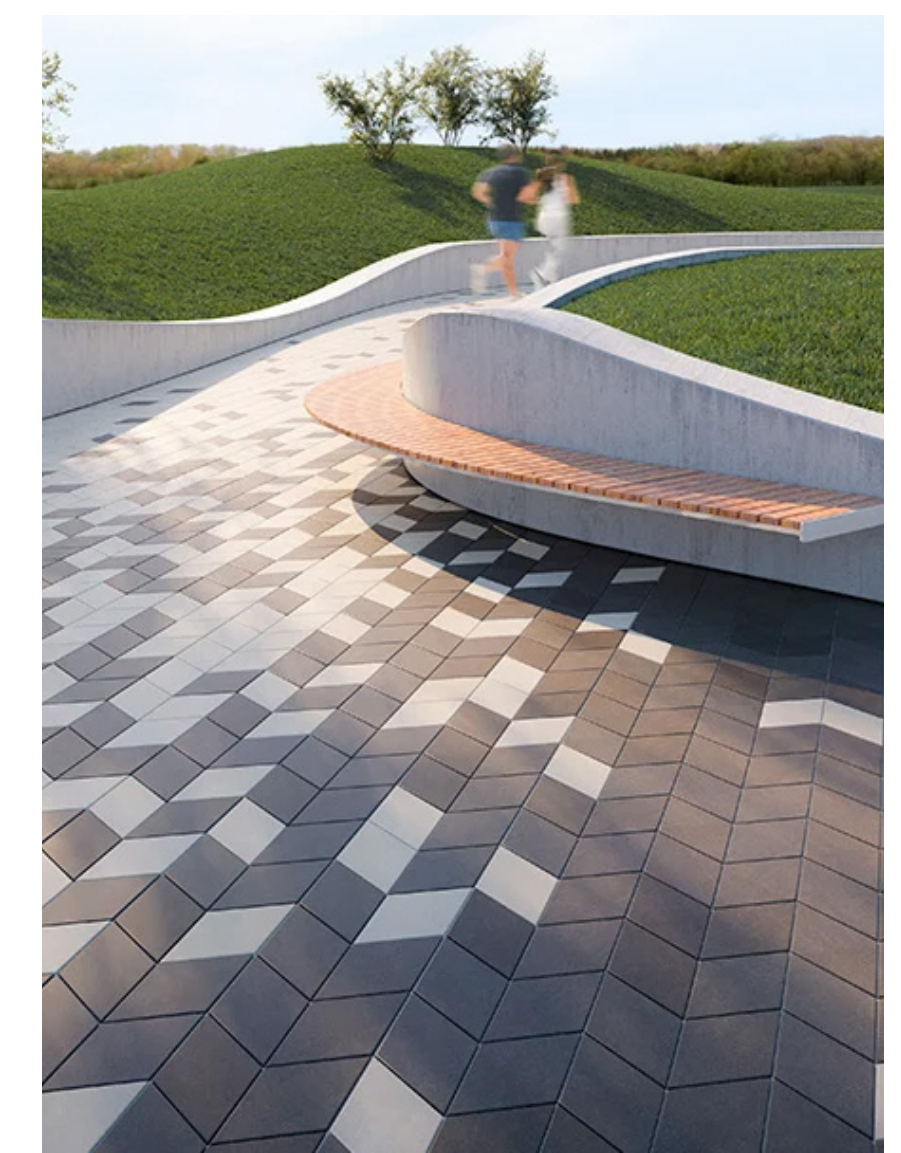




Reuse Ex. Wall Stone for Site Walls



Diamond unit pavers by Techo Bloc



Link by Landscape Forms

416 - 418 LANGLEY ROAD
 NEWTON, MA

Project #:	Date: 09/08/2022
Drawn by: WK	Reviewed: KP
Scale: 1" = 10'-0"	

Revisions:



PROPOSED PLANT LIST

KEY	QTY	LATIN NAME	COMMON NAME	MIN. SIZE	NOTES
TREES					
AG	3	Amelanchier x grandiflora 'Autumn Brilliance'	Serviceberry	8-10' ht. (2" cal)	B&B, single-stem
AP	1	Acer palmatum 'Bloodgood'	Japanese Maple Cultivar	2" cal.	B&B
AS	3	Acer saccharum 'Commemorator'	Sugar Maple	2.5-3" cal.	B&B
CP	1	Chamaecyparis obtusa 'Pendula'	Weeping False Cypress	6-7' ht. (3")	B&B
PO	1	Prunus Okame	Okame Cherry	2" cal.	B&B
RT	1	Rhus typhina	Sumac	48" ht. (1")	Pot
TO	2	Thuja occ. 'Emerald Green'	Emerald Green Arborvitae	5-6' ht. (3")	B&B
TT	1	Thuja 'Techny'	Techny Arborvitae	5-6' ht. (3")	B&B
UA	1	Ulmus americana 'Homestead'	Disease-Resistant American Elm	2.5-3" cal.	B&B

SHRUBS + VINES

FG	1	Fothergilla gardenii	Fothergilla	24" ht.	Pots
HA	7	Hydrangea arborescens 'Annabelle'	Annabelle Hydrangea	5 gal.	Pots
HPL	2	Hydrangea paniculata 'Limelight'	Panicle Hydrangea	5 gal.	Pots
IG	2	Ilex glabra 'Compacta'	Compact Inkberry	5 gal.	Pots
IM	17	Ilex x meserveae 'Blue Princess'	Blue Princess Holly	5 gal.	Pots
PJ	3	Pieris japonica 'Red Head'	Japanese Pieris	5 gal.	Pots
RA	12	Rhus aromatica 'Lo Gro'	Lo Gro Sumac	3 gal.	Pots
RC	8	Rhododendron catawbiense	Catawba Rhododendron	36" ht.	Pots
SJ	11	Spiraea japonica	Japanese Meadowsweet	5 gal.	Pots
VD	3	Viburnum dentatum	Arrowwood Viburnum	36" ht.	Pots

PERENNIALS

af	69	Athyrium filix-femina	Common Lady-Fern	2 gal.	Pots, 18" o.c.
ap	60	Adiantum pedatum	Maidenhair Fern	2 gal.	Pots
at	28	Asclepias tuberosa	Butterfly Milkweed	2 gal.	Pots, 36" o.c.
ck	11	Calamagrostis x acutiflora 'Karl Foerster'	Karl Foerster Feather Reed Grass	2 gal.	Pots, 24" o.c.
df	4	Descampsia flexuosa	Wavy Hair Grass	2 gal.	Pots, 24" o.c.
dp	69	Dennstaedtia punctilobula	Eastern Hay-Scented Fern	1 gal.	Pots, 24" o.c.
gm	18	Geranium macrorrhizum 'Bevans Variety'	Gigroot Geranium	1 gal.	Pots, 24" o.c.
gw	14	Gaura lindheimeri 'Whirling Butterflies' (Beeblossom)	Whirling Butterflies	2 gal.	Pots
tn	60	Thelypteris noveboracensis	New York Fern	1 gal.	Pots, 24" o.c.
pv	14	Perovskia atriplicifolia	Russian Sage	2 gal.	Pots, 36" o.c.

LAWN
Lawn Seed as per specifications

Existing Tree	To Be Removed	To Be Protected	To Be Added
17" DBH Norway maple	x		
11"+12" DBH Linden	x		
33" Multiple Calipers DBH Crab apple	x		
18" DBH Picea pungens	x		
8"+9"+8" DBH Taxus baccata	x		
7"+7" DBH Linden	x		
20" DBH American elm	x		
11" DBH Norway maple		x	
27" DBH Norway maple	x		
29" DBH Norway maple	x		
5"+7"+5"+5"+5" DBH American elm	x		
Total Caliper Inches	228 Inches	11 Inches	33 Inches



Amelanchier x grandiflora 'Autumn Brilliance' Serviceberry (AG)



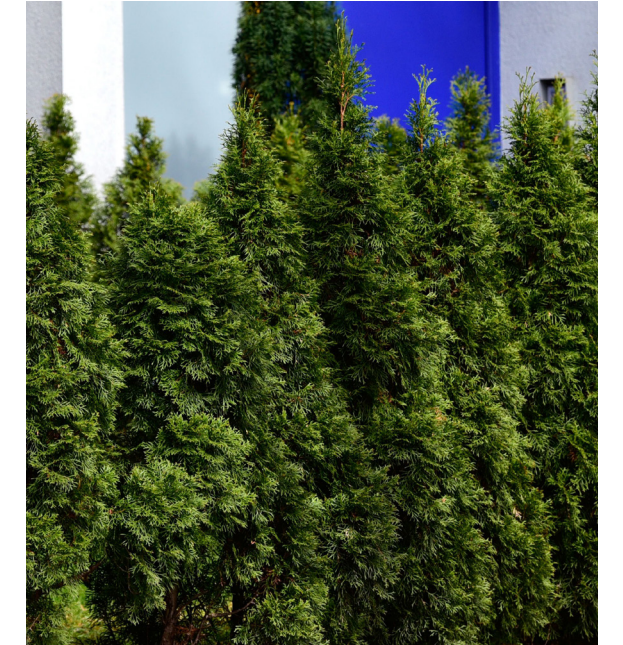
Acer saccharum Sugar Maple (AS)



Chamaecyparis obtusa 'Pendula' Weeping False Cypress (CP)



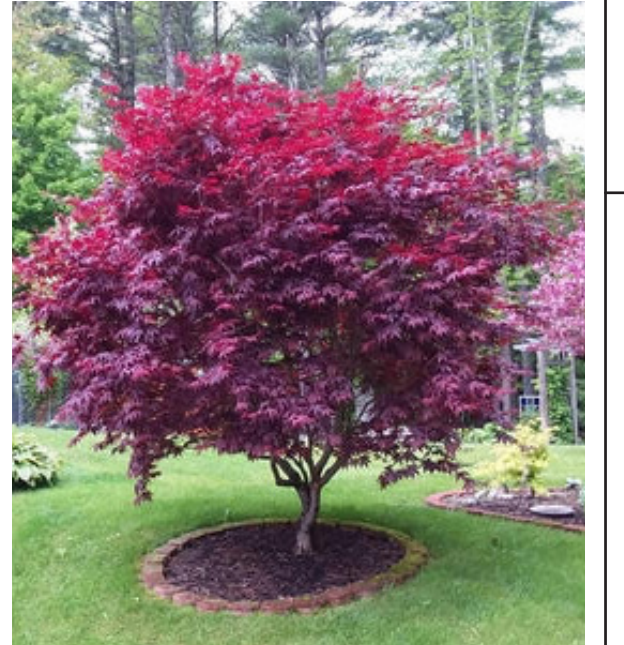
Rhus typhina Sumac (RT)



Thuja occ. 'Emerald Green' Emerald Green Arborvitae (TO)



Ulmus americana 'Homestead' Homestead Elm (UA)



Acer palmatum 'Bloodgood' Japanese Maple Cultivar (AP)



Fothergilla gardenii Fothergilla (FG)



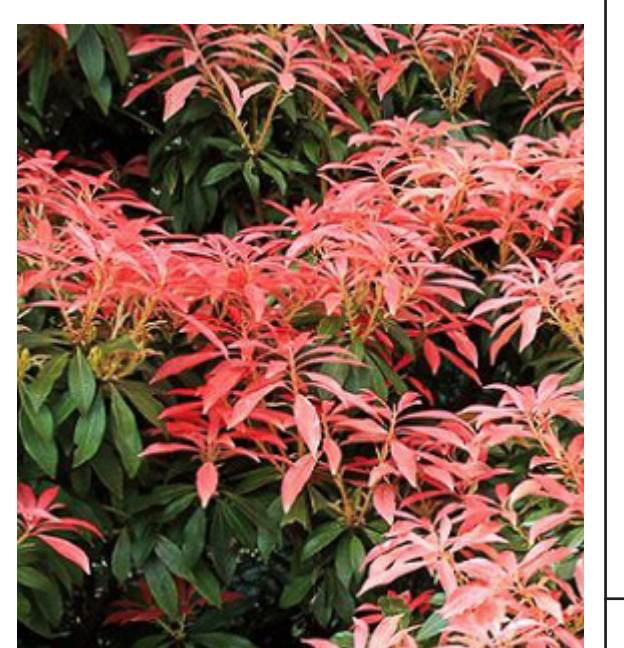
Hydrangea arborescens 'Annabelle' Annabelle Hydr. (HA)



Ilex glabra 'Densa' Inkberry (IG)



Ilex meserveae 'China Girl' China Girl Blue Holly (IM)



Pieris japonica 'Red Head' Japanese Pieris (PJ)



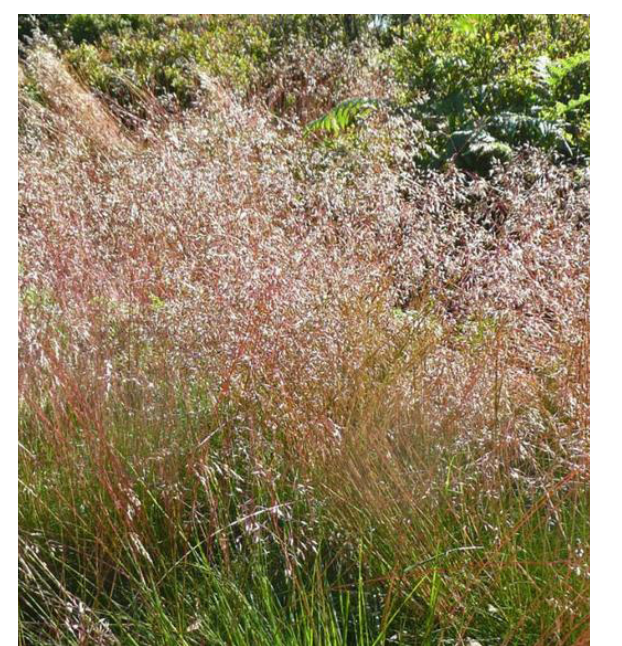
Rhododendron catawbiense Catawba Rhododendron (RC)



Spiraea japonica Japanese Meadowsweet (SJ)



Viburnum dentatum Arrowwood Viburnum (VD)



Deschampsia flexuosa wavy hair grass (df)



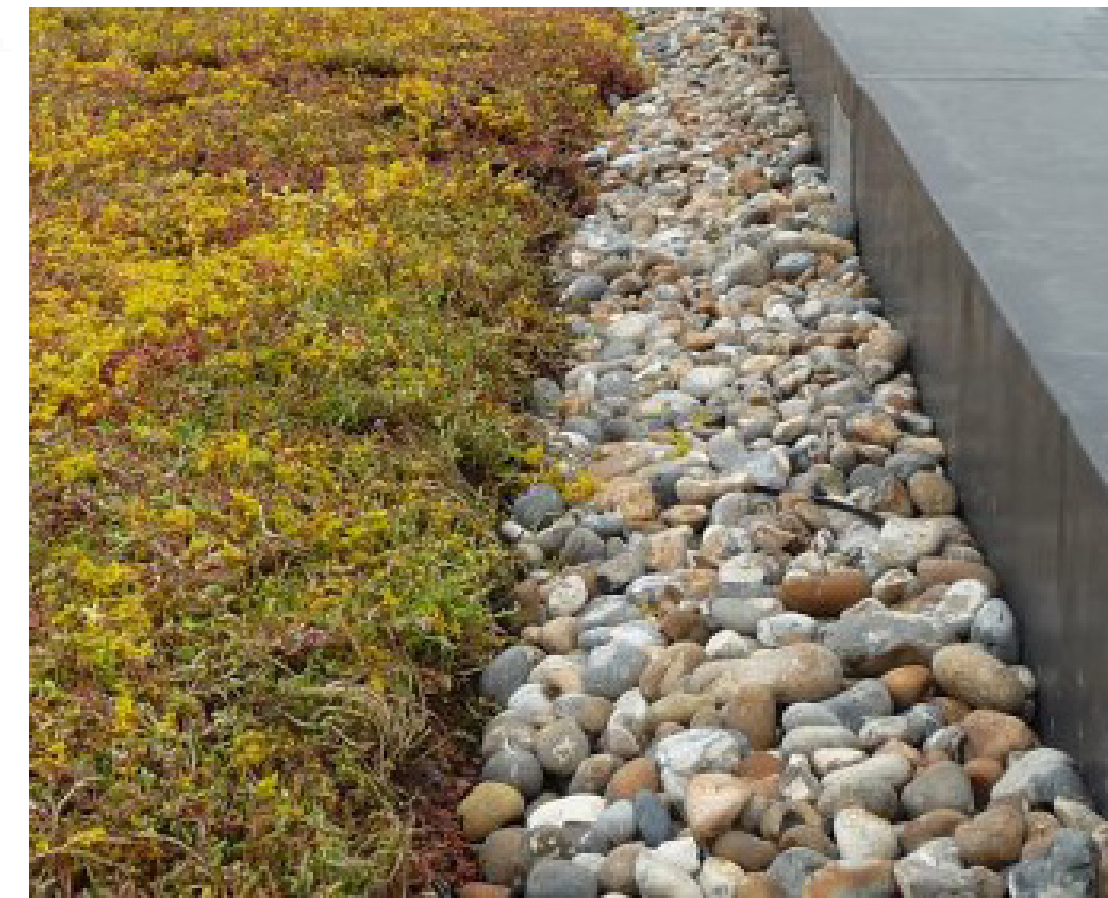
Calamagrostis x acutiflora 'Karl Foerster' Karl Foerster Feather Reed Grass (ck)

416 - 418 LANGLEY ROAD
NEWTON, MA

Project #: _____ Date: 09/08/2022
Drawn by: WK Reviewed: KP
Scale: 1" = 10'-0"

Revisions:

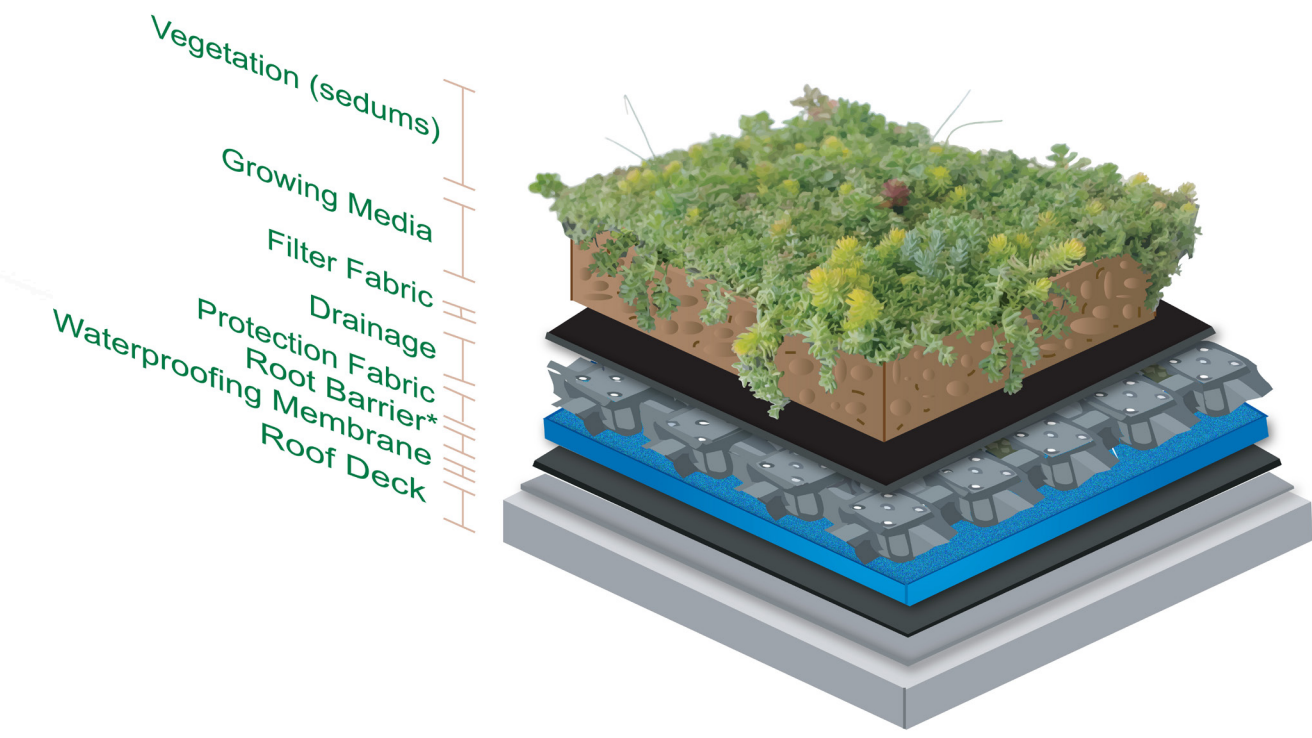
No.	Description



MAINTENANCE EDGE/ BALLAST



CABLE GUARD RAIL



'SEDUM SOD', HYDROTECH (EXTENSIVE GREENROOF PLANTS)



PEDESTAL PAVERS



LIGHTWEIGHT PLANTERS

416 - 418 LANGLEY ROAD
NEWTON, MA

Project #: _____ Date: _____
Drawn by: WK Reviewed: KP
Scale: 1" = 10'-0"

Revisions:
