



## The Existing Countryside Elementary School

- The State has selected Newton to receive 25%-30% of the project cost for the Countryside School. The reasons are obvious.
- Small group learning space in a chronically flooded basement due to lack of space.


Half of the Countryside School classrooms are modular and annexes which are way beyond their useful life.







- The building is so low that sewer must be ground and pumped up to the street. The smell in the school is a constant reminder.

A photograph of a flooded basement area. The floor is covered in water, reflecting the overhead lights. In the foreground, there are several wooden planks leaning against a wall. To the left, a stack of blue and white plastic crates sits on a wooden pallet. In the center, a large black trash bin is partially submerged. To the right, a large black pipe or container is visible. The background shows more of the flooded area with various items scattered around.

The school was built below the water table so chronic flooding never ends, and without sump pumps we would be swimming.



What Countryside could be.



Pause (k)



- Incredible potential to create something special for the staff and students of Countryside.

# **Project Costs**



**Total Cost: \$61M**

**State MSBA Share: \$20M**

**City Share: \$41M**

# **Override Investment**



**Debt Exclusion – 30 year bonds**

**Annual Cost - \$2.3M**



# PROJECT TIMELINE

COUNTRYSIDE ELEMENTARY SCHOOL																								TIMELINE										
PHASE	2021		2022				2023				2024				2025				2026				2027											
	Sum.	Fall	Win.	Spr.	Sum.	Fall.	Win.	Spr.	Sum.	Fall.	Win.	Spr.	Sum.	Fall	Win.	Spr.	Sum.	Fall	Win.	Spr.	Sum.	Fall	Win.	Spr.	Sum.	Fall								
Assemble Project Team & Community Volunteers	█		█				█	█	█	█	█	█	█	█	█	█	█	█	█	█	█	█	█	█	█	█	█							
Design Community Outreach & Approvals	█	█	█	█	█	█				█	█	█	█	█	█	█	█	█	█	█	█	█	█	█	█	█	█							
Documents	█	█	█	█	█	█	█	█	█	█								█	█	█	█	█	█	█	█	█	█	█	█	█	█			
Construction	█	█	█	█	█	█	█	█	█	█	█	█	█	█	█	█	█										█	█	█	█	█	█	█	█

Estimated Completion





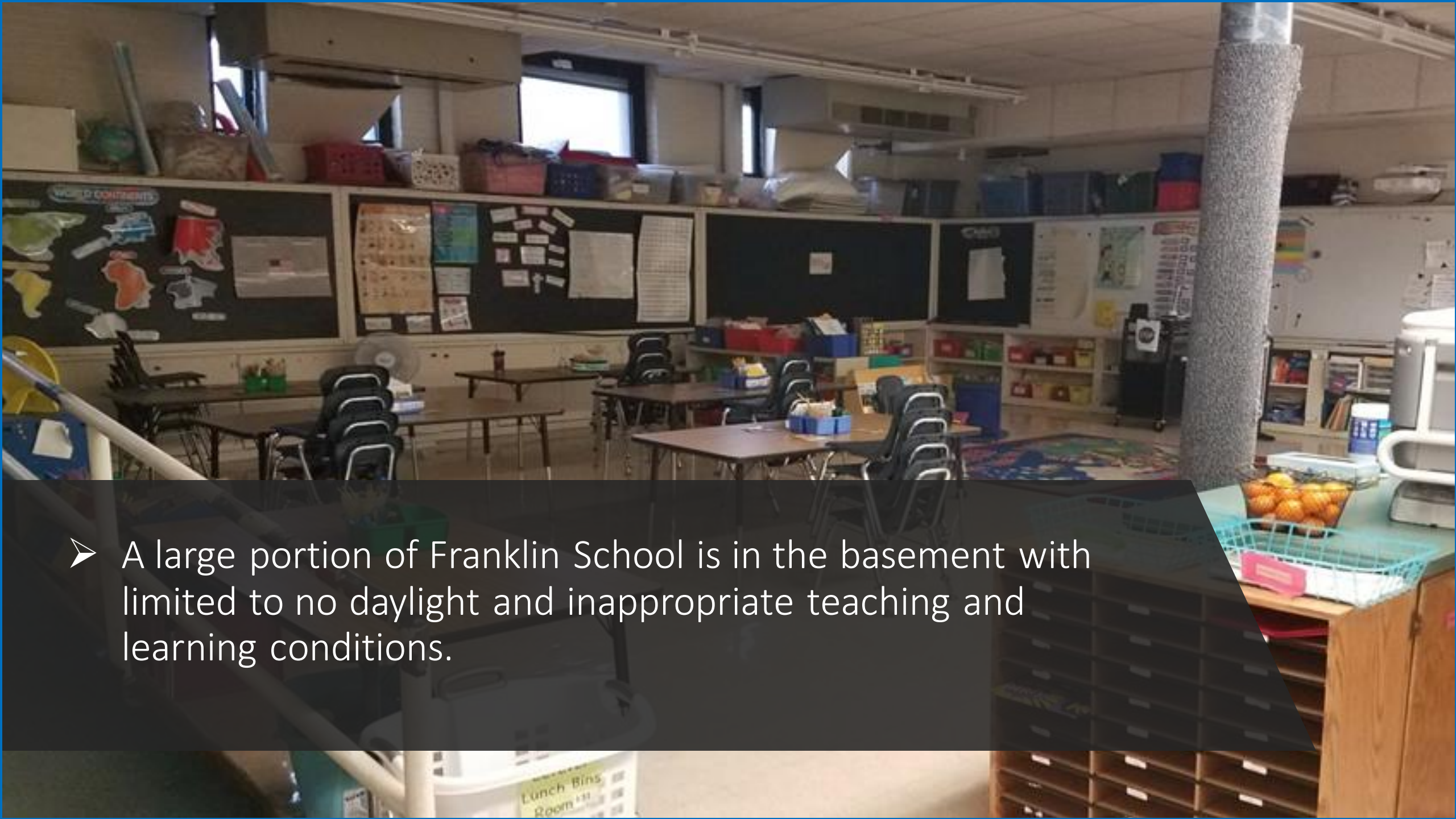
**For more information on the  
Countryside Elementary School Project visit:  
[www.countrysideelementaryschoolproject.com](http://www.countrysideelementaryschoolproject.com)**



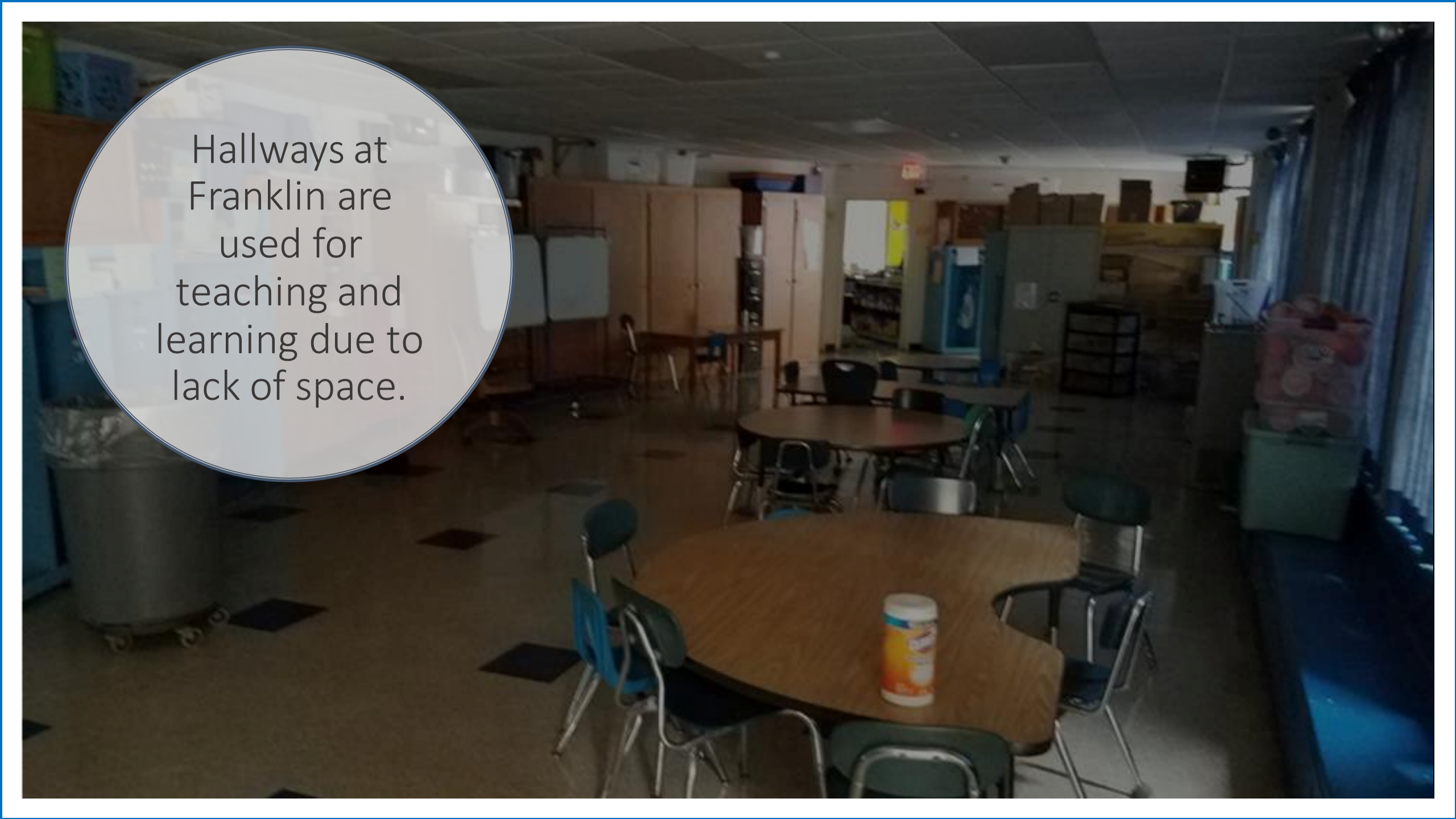
## The Existing Franklin Elementary School

- Approaching its centennial, the conditions at Franklin must be improved.



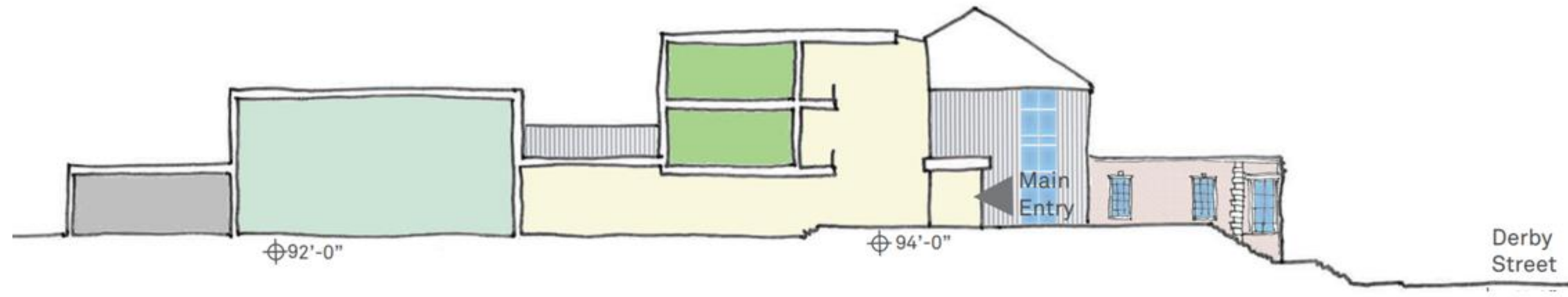


- A large portion of Franklin School is in the basement with limited to no daylight and inappropriate teaching and learning conditions.



Hallways at  
Franklin are  
used for  
teaching and  
learning due to  
lack of space.





**UNACCEPTABLE LACK OF ACCESSIBILITY AND INCLUSIVENESS; THE FRANKLIN SCHOOL SITS 14 FEET ABOVE DERBY STREET, AND HAS 6 DIFFERENT LEVELS INSIDE.**



Incredible potential and promise for the future of the Franklin School.





## **Project Costs**



**Total Cost: \$61M**

**City Share: \$61M**

## **Override Investment**



**Debt Exclusion – 30 year bonds**

**Annual Cost - \$3.5M**

# PROJECT TIMELINE

FRANKLIN ELEMENTARY SCHOOL																							TIMELINE			
	2021		2022				2023				2024				2025				2026				2027			
PHASE	Sum.	Fall	Win.	Spr.	Sum.	Fall.	Win.	Spr.	Sum.	Fall.	Win.	Spr.	Sum.	Fall	Win.	Spr.	Sum.	Fall	Win.	Spr.	Sum.	Fall	Win.	Spr.	Sum.	Fall
Assemble Project Team & Community Volunteers																										
Design Community Outreach & Approvals																										
Documents																										
Construction																										



**Estimated Completion**

\* Schedule assumes swing space is not needed for both Countryside and Franklin simultaneously.



For more information on the  
Franklin Elementary School Project visit:  
[https://www.newtonma.gov/government/public-  
buildings/capital-projects-investing-now-for-newton-s-  
future/school-projects/franklin](https://www.newtonma.gov/government/public-buildings/capital-projects-investing-now-for-newton-s-future/school-projects/franklin)

# Spaces are Woefully Undersized

	Existing	Recommended
Classrooms	●	●
Special Education Space	●	●
Library	●	●
Cafeteria	●	●



"Horace Mann is  
Busting at the Seams!"



**Some of the  
smallest-sized  
classrooms  
in Newton, as much  
as 40% too small.**

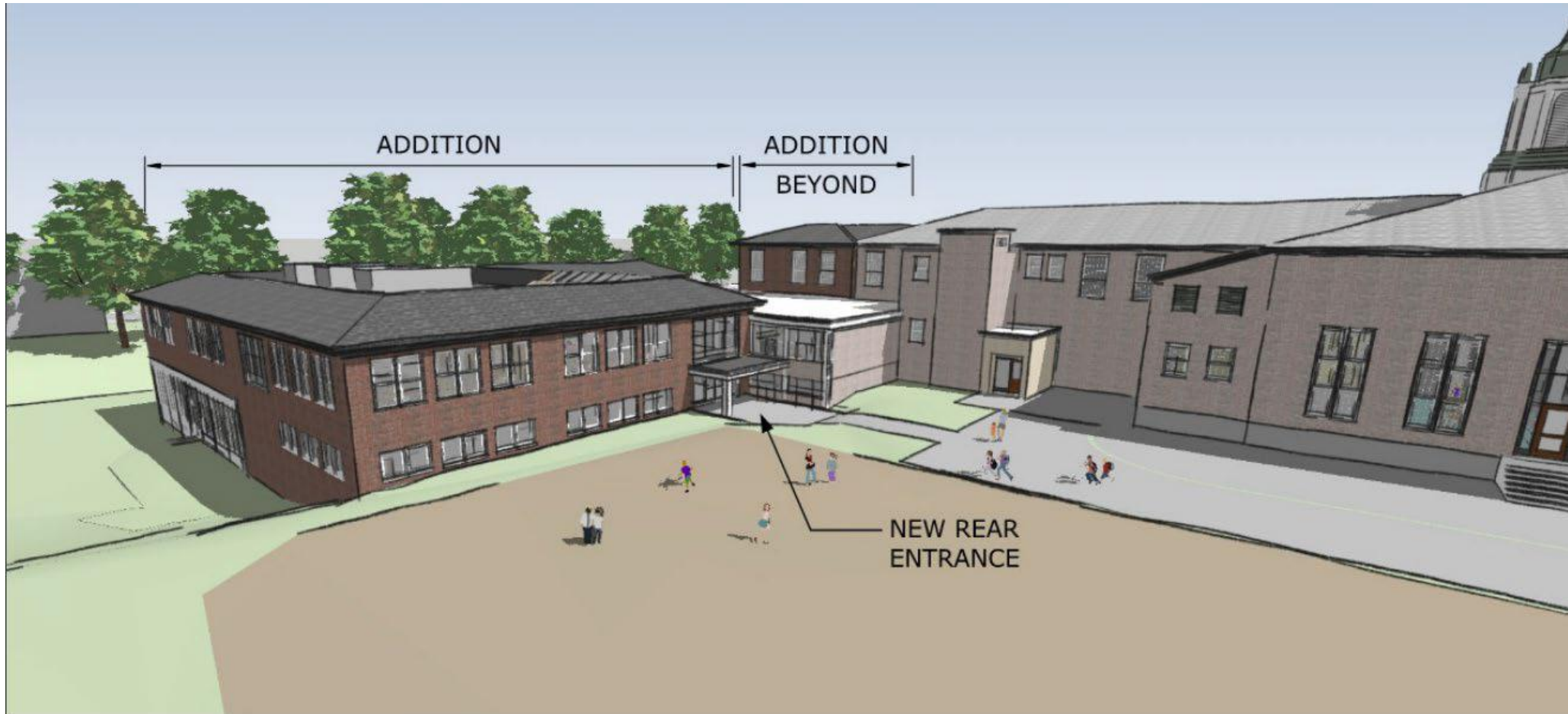




To help with the space crunch we had to lease temporary modular classrooms but they provide not nearly enough space.



A beautiful addition will provide the space Horace Mann so desperately needs.





The added space will allow Horace Mann to reach its full potential.



# **OVERRIDE INVESTMENT**



**Operating Budget Debt Service  
Annual Cost - \$775,000**





# PROJECT TIMELINE

HORACE MANN ELEMENTARY SCHOOL

TIMELINE

	2021		2022				2023				2024				2025				2026				2027			
PHASE	Sum.	Fall	Win.	Spr.	Sum.	Fall.	Win.	Spr.	Sum.	Fall.	Win.	Spr.	Sum.	Fall	Win.	Spr.	Sum.	Fall	Win.	Spr.	Sum.	Fall	Win.	Spr.	Sum.	Fall
Assemble Project Team & Community Volunteers																										
Design Community Outreach & Approvals																										
Documents																										
Construction																										

Estimated Completion



For more information on the  
Horace Mann Elementary School Project visit:  
<https://www.newtonma.gov/government/public-buildings/capital-projects-investing-now-for-newton-s-future/school-projects/horace-mann>