



The Existing Countryside Elementary School


- The State has selected Newton to receive 25%-30% of the project cost for the Countryside School. The reasons are obvious.
- Small group learning space in a chronically flooded basement due to lack of space.

Half of the Countryside School classrooms are modular and annexes which are way beyond their useful life.





- The building is so low that sewer must be ground and pumped up to the street. The smell in the school is a constant reminder.

A photograph of a flooded utility room. The floor is covered in water, reflecting the overhead lights. In the foreground, there are wooden planks leaning against a wall. To the left, a stack of blue and white plastic crates sits on a wooden pallet. In the background, there are large blue plastic bins, one of which is filled with colorful hoses. A metal grate is visible on the right side of the frame. A circular text overlay is positioned in the upper left quadrant.

The school was built below the water table so chronic flooding never ends, and without sump pumps we would be swimming.

What Countryside could be.



Pause (k)



- Incredible potential to create something special for the staff and students of Countryside.

Project Costs



Total Cost: \$61M

State MSBA Share: \$20M

City Share: \$41M

Override Investment



Debt Exclusion – 30 year bonds

Annual Cost - \$2.3M

PROJECT TIMELINE

COUNTRYSIDE ELEMENTARY SCHOOL																								TIMELINE					
PHASE	2021		2022				2023				2024				2025				2026				2027						
	Sum.	Fall	Win.	Spr.	Sum.	Fall.	Win.	Spr.	Sum.	Fall.	Win.	Spr.	Sum.	Fall	Win.	Spr.	Sum.	Fall	Win.	Spr.	Sum.	Fall	Win.	Spr.	Sum.	Fall			
Assemble Project Team & Community Volunteers	█		█				█	█	█	█	█	█	█	█	█	█	█	█	█	█	█	█	█	█	█	█			
Design Community Outreach & Approvals	█	█	█	█	█	█				█	█	█	█	█	█	█	█	█	█	█	█	█	█	█	█	█			
Documents	█	█	█	█	█	█	█	█	█	█								█	█	█	█	█	█	█	█	█	█	█	█
Construction	█	█	█	█	█	█	█	█	█	█	█	█	█	█	█	█	█										█		

Estimated Completion

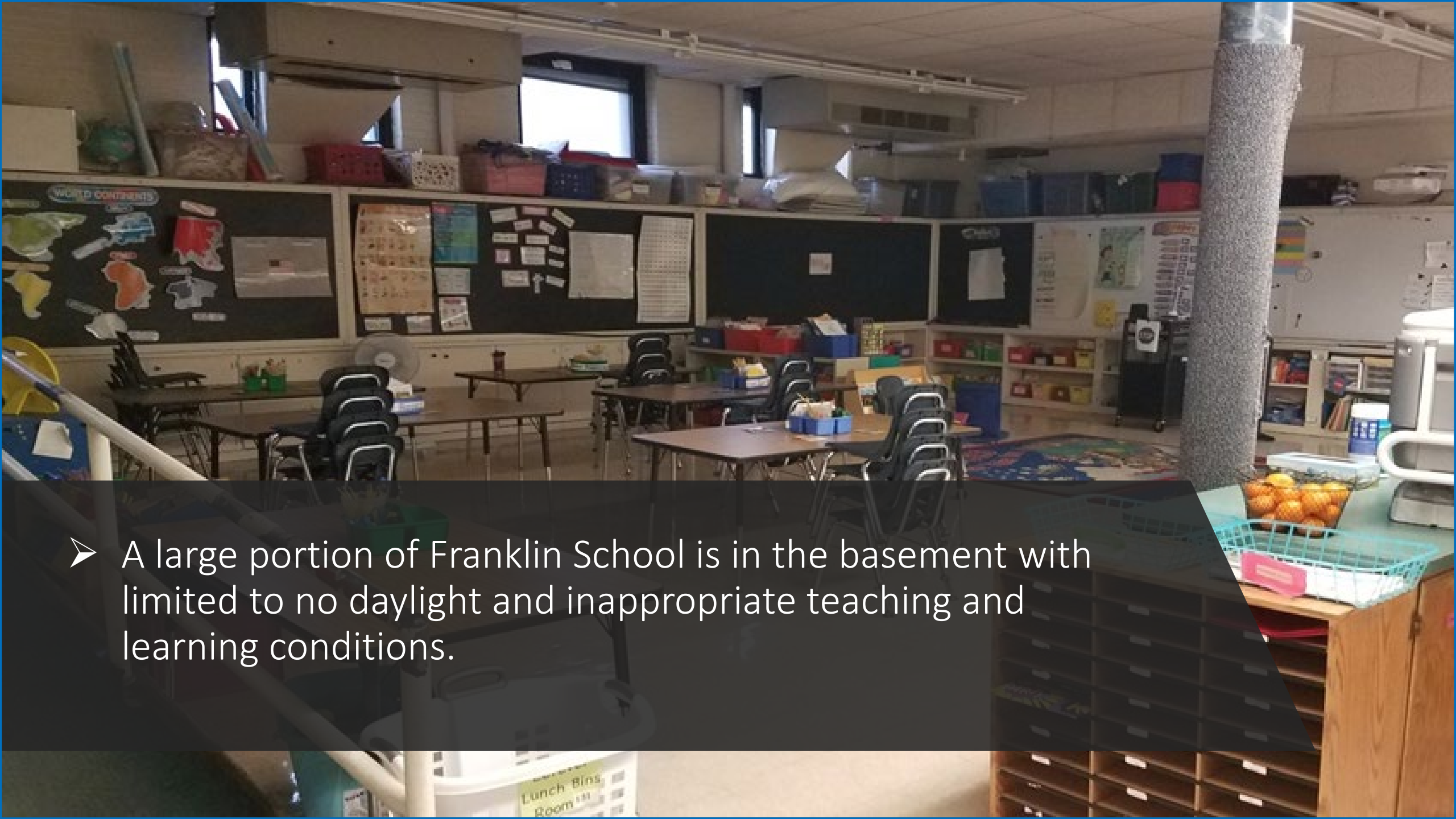


**For more information on the
Countryside Elementary School Project visit:
www.countrysideelementaryschoolproject.com**




The Existing Franklin Elementary School

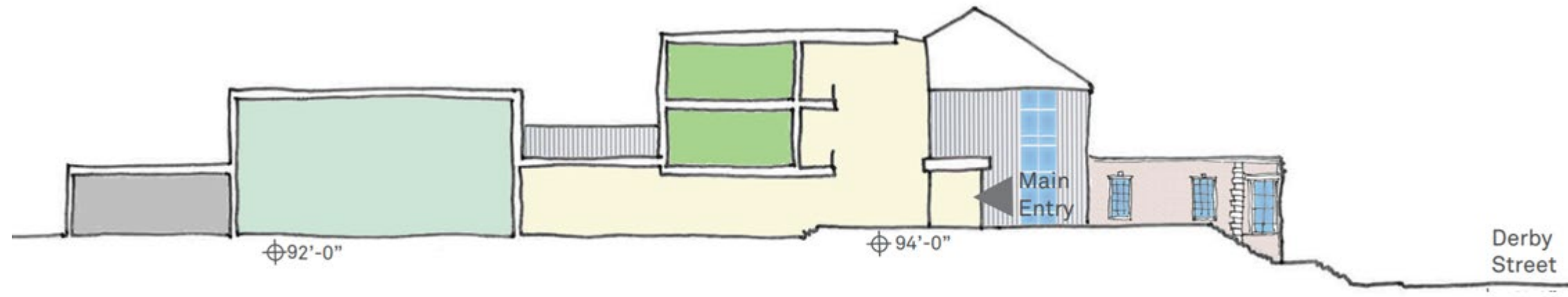
- Approaching its centennial, the conditions at Franklin must be improved.



- A large portion of Franklin School is in the basement with limited to no daylight and inappropriate teaching and learning conditions.



Hallways at
Franklin are
used for
teaching and
learning due to
lack of space.



UNACCEPTABLE LACK OF ACCESSIBILITY AND INCLUSIVENESS; THE FRANKLIN SCHOOL SITS 14 FEET ABOVE DERBY STREET, AND HAS 6 DIFFERENT LEVELS INSIDE.



Incredible potential and promise for the future of the Franklin School.



Project Costs



Total Cost: \$61M

City Share: \$61M

Override Investment




Debt Exclusion – 30 year bonds

Annual Cost - \$3.5M

PROJECT TIMELINE

FRANKLIN ELEMENTARY SCHOOL																							TIMELINE			
PHASE	2021		2022				2023				2024				2025				2026				2027			
	Sum.	Fall	Win.	Spr.	Sum.	Fall.	Win.	Spr.	Sum.	Fall.	Win.	Spr.	Sum.	Fall	Win.	Spr.	Sum.	Fall	Win.	Spr.	Sum.	Fall	Win.	Spr.	Sum.	Fall
Assemble Project Team & Community Volunteers	█	█	█	█	█	█	█	█	█	█	█	█	█	█	█	█	█	█	█	█	█	█	█	█	█	█
Design Community Outreach & Approvals	█	█	█	█	█	█	█	█	█	█	█	█	█	█	█	█	█	█	█	█	█	█	█	█	█	█
Documents	█	█	█	█	█	█	█	█	█	█	█	█	█	█	█	█	█	█	█	█	█	█	█	█	█	█
Construction	█	█	█	█	█	█	█	█	█	█	█	█	█	█	█	█	█	█	█	█	█	█	█	█	█	█

Estimated Completion 

* Schedule assumes swing space is not needed for both Countryside and Franklin simultaneously.

For more information on the
Franklin Elementary School Project visit:
[https://www.newtonma.gov/government/public-
buildings/capital-projects-investing-now-for-newton-s-
future/school-projects/franklin](https://www.newtonma.gov/government/public-buildings/capital-projects-investing-now-for-newton-s-future/school-projects/franklin)

Spaces are Woefully Undersized

	Existing	Recommended
Classrooms	●	●
Special Education Space	●	●
Library	●	●
Cafeteria	●	●



"Horace Mann is
Busting at the Seams!"

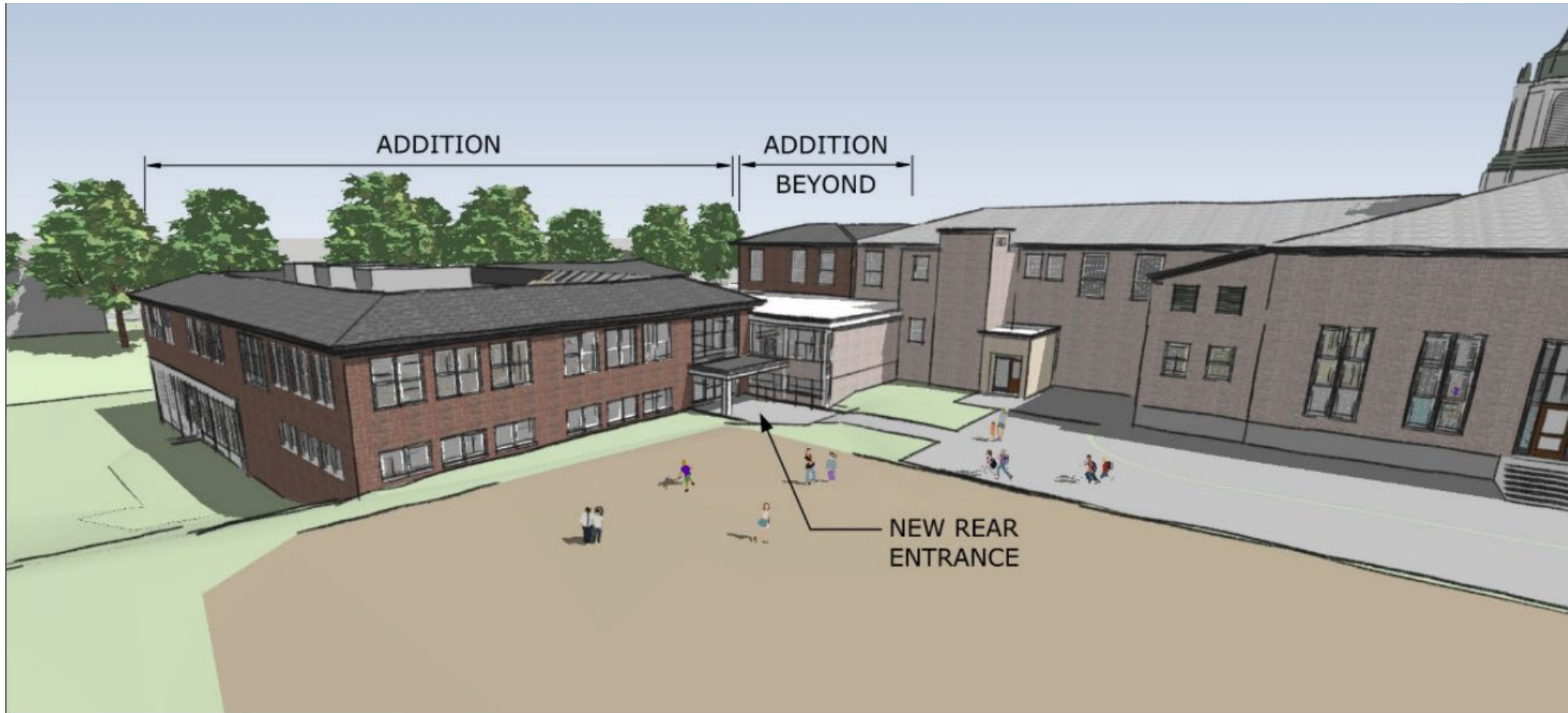


Some of the
smallest-sized
classrooms
in Newton, as much
as 40% too small.



To help with the space crunch we had to lease temporary modular classrooms but they provide not nearly enough space.

A beautiful addition will provide the space Horace Mann so desperately needs.



The added space will allow Horace Mann to reach its full potential.



OVERRIDE INVESTMENT



**Operating Budget Debt Service
Annual Cost - \$775,000**



PROJECT TIMELINE

HORACE MANN ELEMENTARY SCHOOL

TIMELINE

PHASE	2021		2022				2023				2024				2025				2026				2027			
	Sum.	Fall	Win.	Spr.	Sum.	Fall.	Win.	Spr.	Sum.	Fall.	Win.	Spr.	Sum.	Fall	Win.	Spr.	Sum.	Fall	Win.	Spr.	Sum.	Fall	Win.	Spr.	Sum.	Fall
Assemble Project Team & Community Volunteers	█	█	█	█	█	█	█	█	█	█	█	█	█	█	█	█	█	█	█	█	█	█	█	█	█	█
Design Community Outreach & Approvals	█	█	█	█	█	█	█	█	█	█	█	█	█	█	█	█	█	█	█	█	█	█	█	█	█	█
Documents	█	█	█	█	█	█	█	█	█	█	█	█	█	█	█	█	█	█	█	█	█	█	█	█	█	█
Construction	█	█	█	█	█	█	█	█	█	█	█	█	█	█	█	█	█	█	█	█	█	█	█	█	█	█

Estimated Completion 

For more information on the
Horace Mann Elementary School Project visit:
<https://www.newtonma.gov/government/public-buildings/capital-projects-investing-now-for-newton-s-future/school-projects/horace-mann>