

Facilities –
What did we do – 2013 Override
What are we doing -Now
What will we do – 2023 Override



Angier Before

Students eating in the basement hallways.



Angier After



Angier Before



Angier After



Angier Before -
Pumps and Hoses in the Classrooms ran
continuously to prevent flooding.



Angier After



Zervas Before



Zervas After



Zervas Cafetorium Before - Zervas had
neither a cafeteria or auditorium.

Zervas After



Zervas before - Library was in a used
Modular classroom.



Zervas After



Cabot Before



Cabot After



Cabot Before



Cabot After



Cabot Gym-a-Cafetorium Before



Cabot Cafetorium and Gym After



Fire Station #3 Before



Fire Station #3 After



Wires Division Before



Wires Division After



Same Team. Next Chapter. Incredible Opportunities.

- ▶ Largely the same team from the 2013 override will lead the charge again.



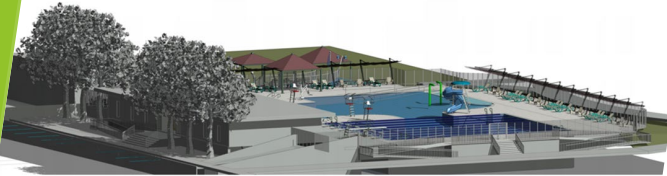
Community Facilities



VIEWS OF COM

► Top to Bottom on the Left:

- Library Children's Room - Complete
- Gath Pool Replacement and New Splash Pad – Approaching Final Design
- Newton Center for Active Living – Approaching Final Design



2 REVEREND VIEW



3 REVEREND VIEW

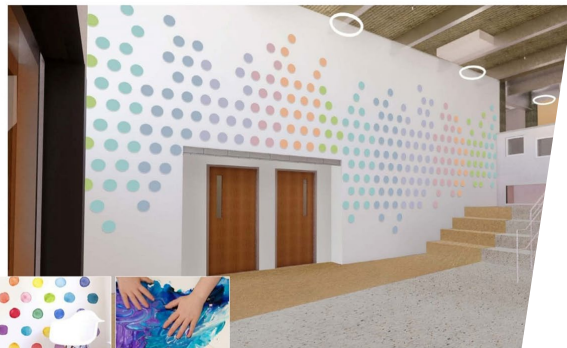


School Buildings



- ▶ Oak Hill Middle School Addition - Complete
- ▶ Lincoln-Eliot School – Approaching Final Design
- ▶ Newton Early Childhood Project – Approaching Completion

CONCEPT ONE / Created by Hand



The Existing Countryside Elementary School

- ▶ The State has selected Newton to receive 25%-30% of the project cost for the Countryside School. The reasons are obvious.



- ▶ Small group learning space in a chronically flooded basement due to lack of space.

Half of the Countryside School classrooms are modular and annexes which are way beyond their useful life.



The building is so low that sewer must be ground and pumped up to the street. The smell in the school is a constant reminder.



The school was built below the water table so chronic flooding never ends, and without sump pumps we would be swimming.



One Concept for the Future of Countryside.



Incredible potential to create something special for the staff and students of Countryside.

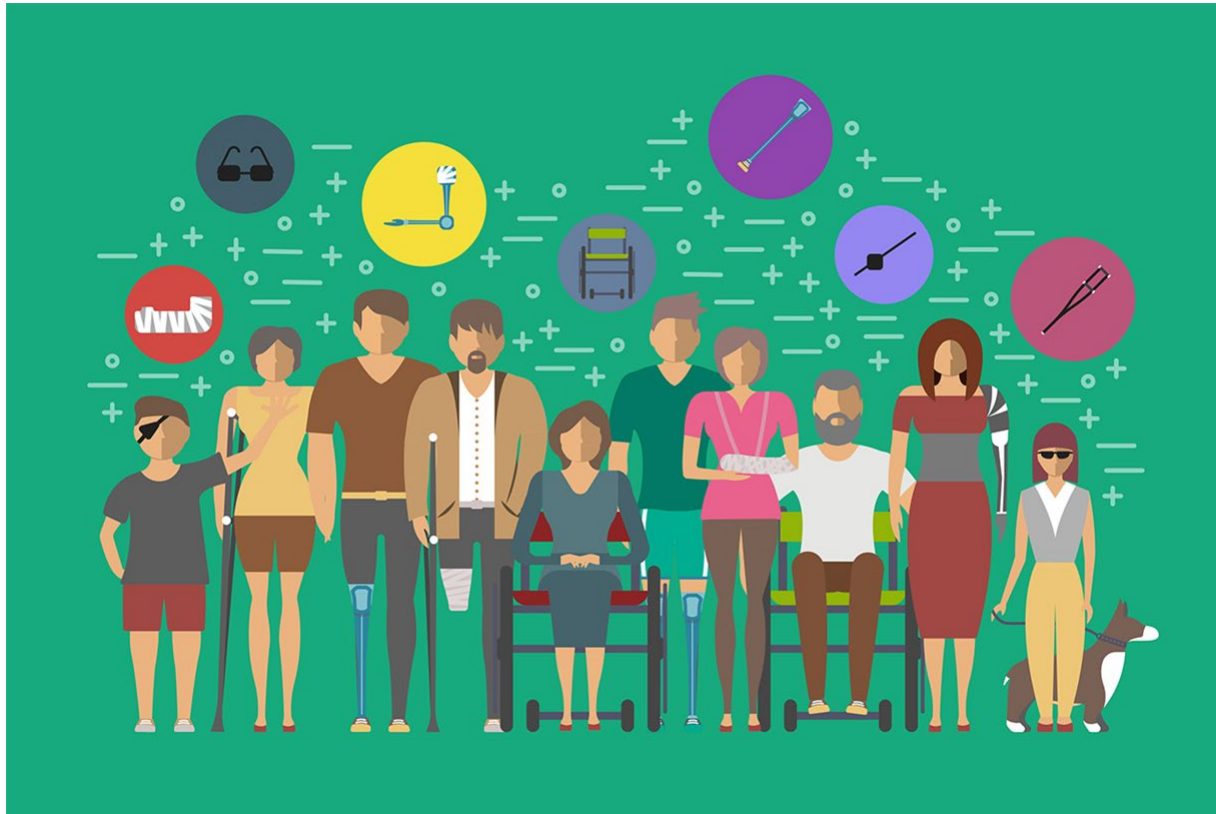


The Existing Franklin Elementary School

Approaching its centennial, the conditions at Franklin are simply unacceptable.



Unacceptable Lack of Accessibility and Inclusiveness, the Franklin School sits 14 feet above Derby Street, and has 6 different levels inside.



A large portion of Franklin School is in the basement with limited to no daylight and inappropriate teaching and learning conditions.



Hallways at Franklin are used for teaching and learning due to lack of space.



Incredible potential and promise for the future of the Franklin School.



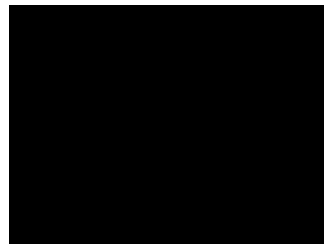
The Existing Horace Mann Elementary School - Simply not enough space.



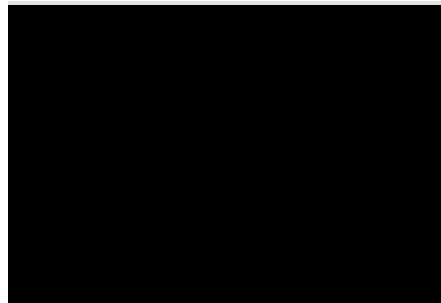
**"Horace Mann is
Busting at the Seams!"**

Some of the smallest-sized classrooms in Newton.

Classrooms were as
much as 40% too
small.



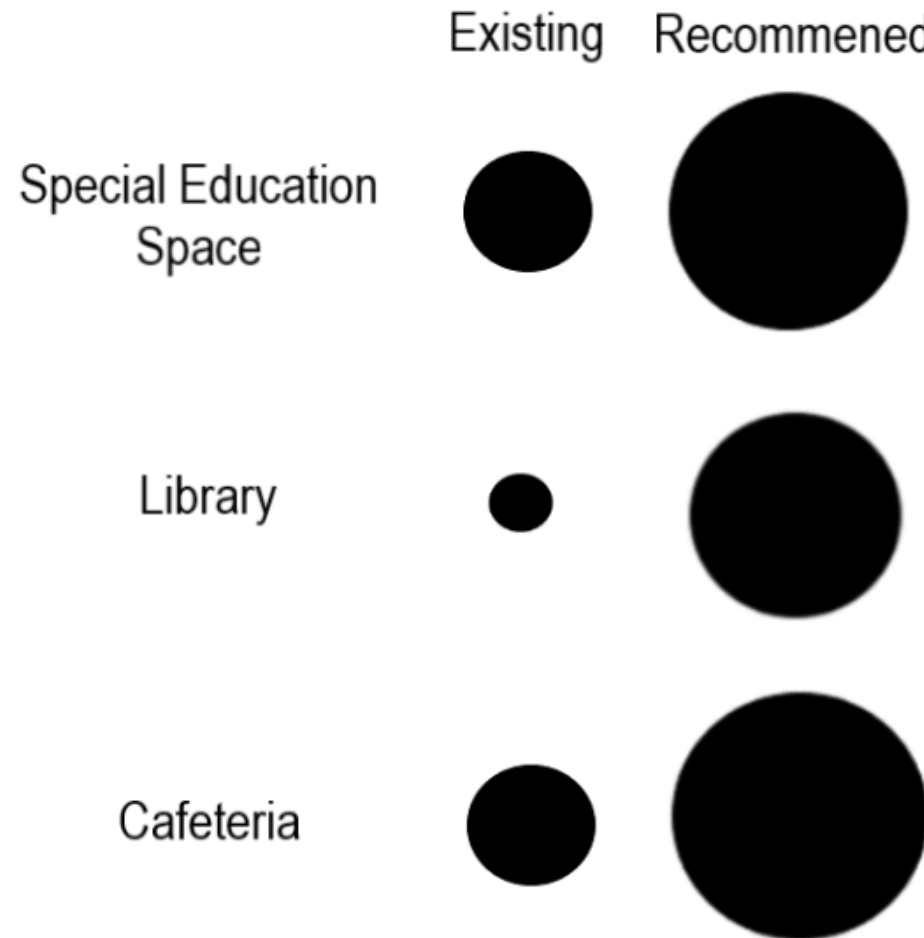
What it
was



What it
should be

Beyond the small classrooms, almost every space at Horace Mann is way too small.

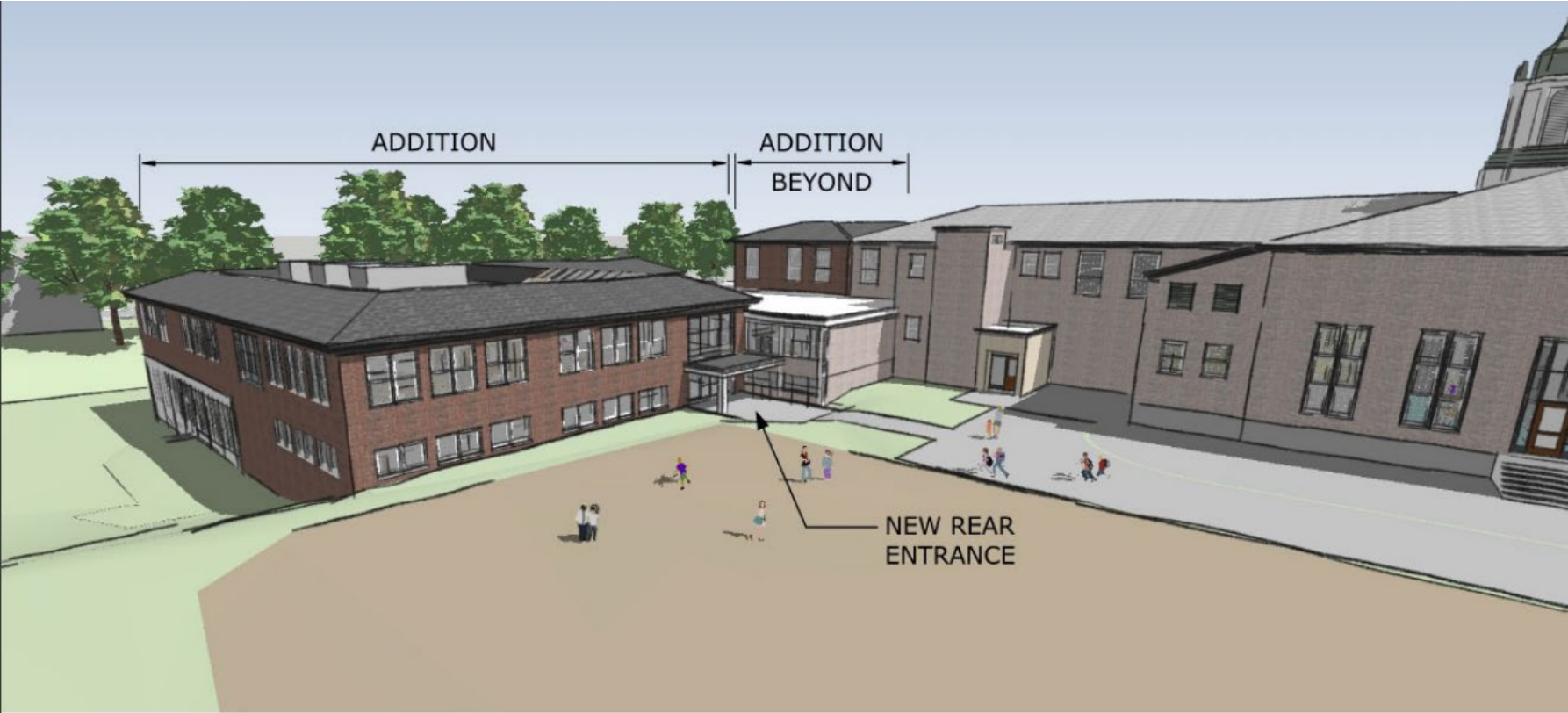
Horace Mann Spaces are Woefully Undersized



To help with the space crunch we had to lease temporary modular classrooms but they provide not nearly enough space.



A beautiful addition will provide the space Horace Mann so desperately needs.



The added space will allow Horace Mann to reach its full potential.

