

For Registry Use Only



SBDH  
Fnd.  
N45°18'00"E  
143.25'

N27°14'00"E  
102.96'

N/F  
#141 Grove Street  
City of Newton  
School Department

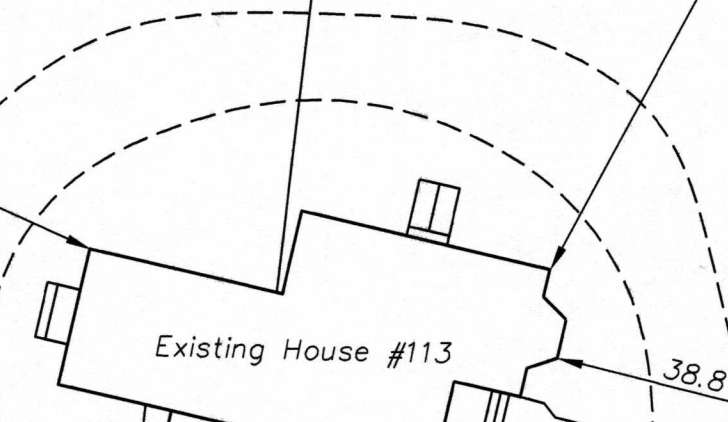
Lasell Street  
30' Wide - Public

Parcel "A"  
Access & Utility Easement  
31±s.f.  
Not A Separate  
Building Lot

N/F  
#21 Lasell Street  
Regilio A. Desouza & Agnes M. Wierzbicki  
Bk.67363 Pg.79

N/F  
#141 Grove Street  
City of Newton  
School Department

Lot 1  
22,881±s.f.  
B.F.=7.14



N/F  
#107-109 Grove Street  
Jeffrey Yong & Krystal Tam  
& Judy Lai Yee  
Bk.75966 Pg.95

R-Bar  
Set

R-Bar  
Set

DH  
Set

DH  
Set

SBDH  
Fnd.

Grove Street  
Variable Width - Public

Woodland Road  
40' Wide - Public

I CERTIFY THAT THIS PLAN HAS BEEN PREPARED  
IN ACCORDANCE WITH THE RULES AND REGULATIONS  
OF THE REGISTERS OF DEEDS OF THE COMMONWEALTH  
OF MASSACHUSETTS

*Verne T. Porter Jr.* 10-5-2022

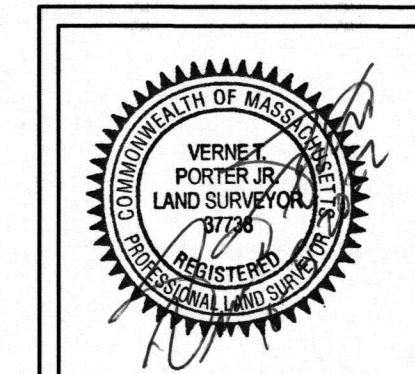
APPROVAL UNDER THE SUBDIVISION CONTROL LAW  
NOT REQUIRED

CLERK - NEWTON PLANNING BOARD  
ACTING AS A BOARD OF SURVEY

THE ABOVE ENDORSEMENT IS NOT A DETERMINATION  
AS TO CONFORMANCE WITH ZONING REGULATIONS

Owner:  
113 Grove Street LLC  
27 Lill Avenue  
Newton, Ma. 02465  
Book 78458 Page 444

UTILITIES SHOWN WERE TAKEN FROM ACTUAL FIELD LOCATIONS, TOWN PLANS,  
DIG SAFE MARKINGS AND CONTRACTORS NOTES, MAY OR MAY NOT BE  
COMPLETE OR CORRECT, FIELD VERIFY ALL LOCATIONS AND DEPTHS PRIOR TO  
ANY EXCAVATION.



~Subdivision Plan of Land~	
113 Grove Street	
Newton, Massachusetts	
Scale: 1"=20'	October 5, 2022
VERNE T. PORTER Jr, PLS	
Land Surveyors - Civil Engineers	
354 Elliot Street, Newton, Ma. 02464	
Sheet 1 of 1	
Design By:GNB	Checked By:VTP
Drawn By:GNB	