



2023 OVERRIDE

Voting by Newton
for Newton on
Three Questions

Voting by Newton for Newton

TWO DEBT EXCLUSION OVERRIDES

Countryside Elementary

Annual amount to
service 30-year bonds

\$2,300,000

Franklin Elementary

\$3,500,000

- *Temporary tax increase for the life of the bonds*
- *Kicks in when we start bonding*

Voting by Newton for Newton

ONE OPERATING OVERRIDE

Horace Mann Elementary	\$775,000
Streets and Sidewalks	\$1,400,000
Parks, Fields, Courts and Playgrounds	\$1,000,000
Plant and Nurture Trees	\$500,000
Sustainability and Climate Resiliency	\$500,000
Senior Services and Programs	\$500,000
Supporting Student Needs	\$4,500,000
	\$9,175,000

- *Permanent tax increase*
- *Starts on July 1, 2023*

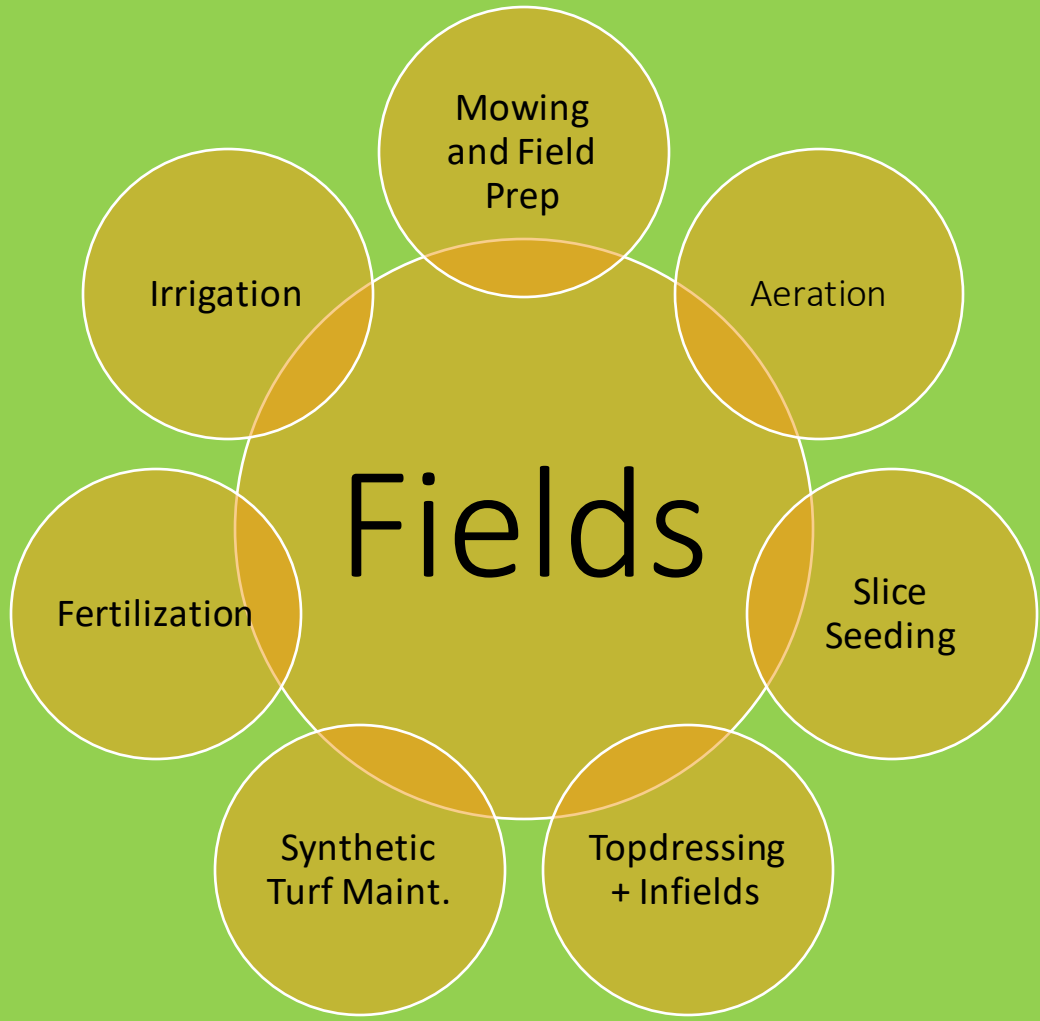


Investing in:

- **Fields**
- **Playgrounds**
- **Parks**
- **Courts**
- **Trees**



INVESTING IN FIELDS



Before...



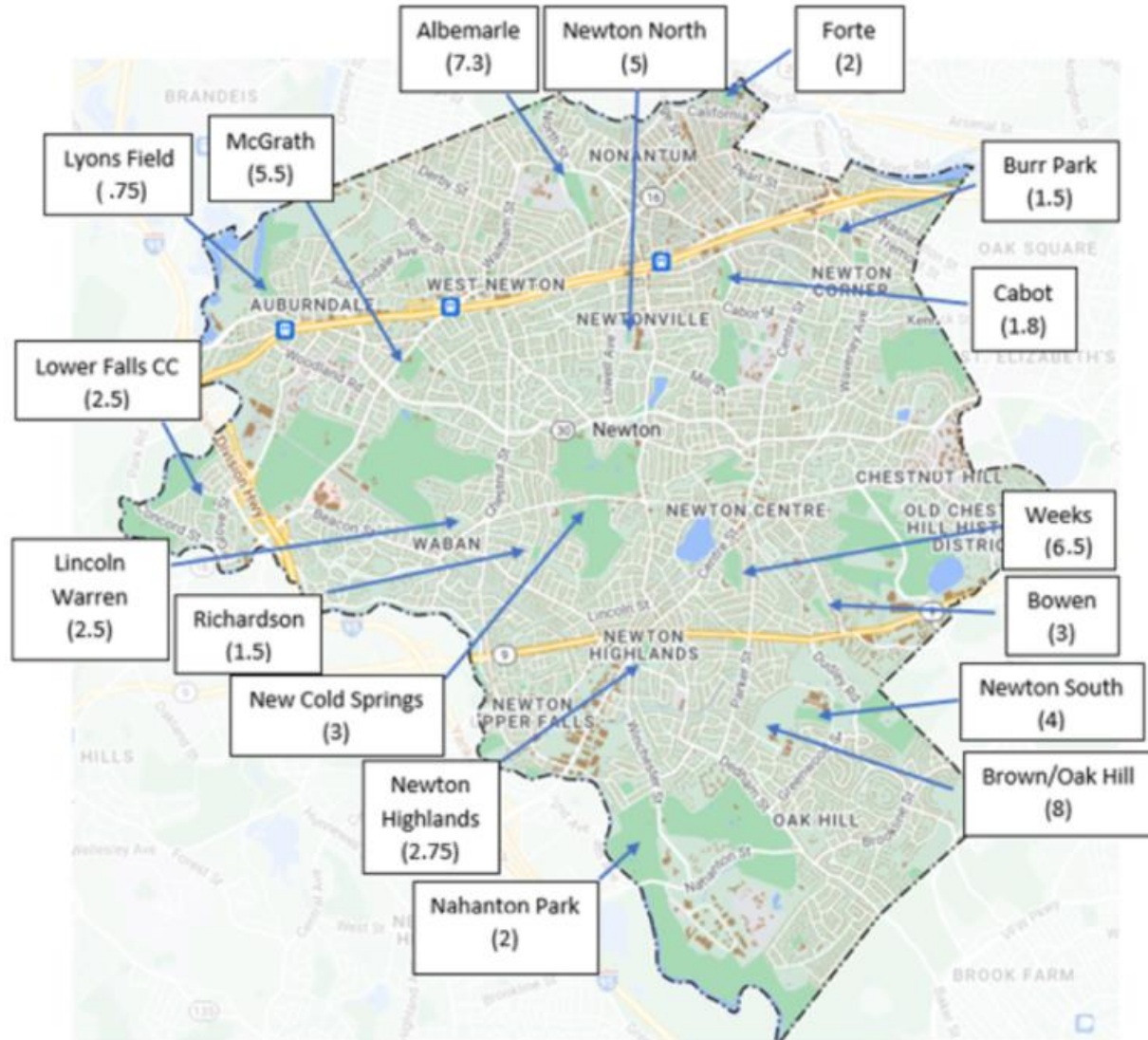
Case Study: Lower Falls

- Fertilizer
- Dethatch
- Slice Seed



After!

Athletic Field Maintenance



FY19

FY23

\$35K



\$300K

8 sites

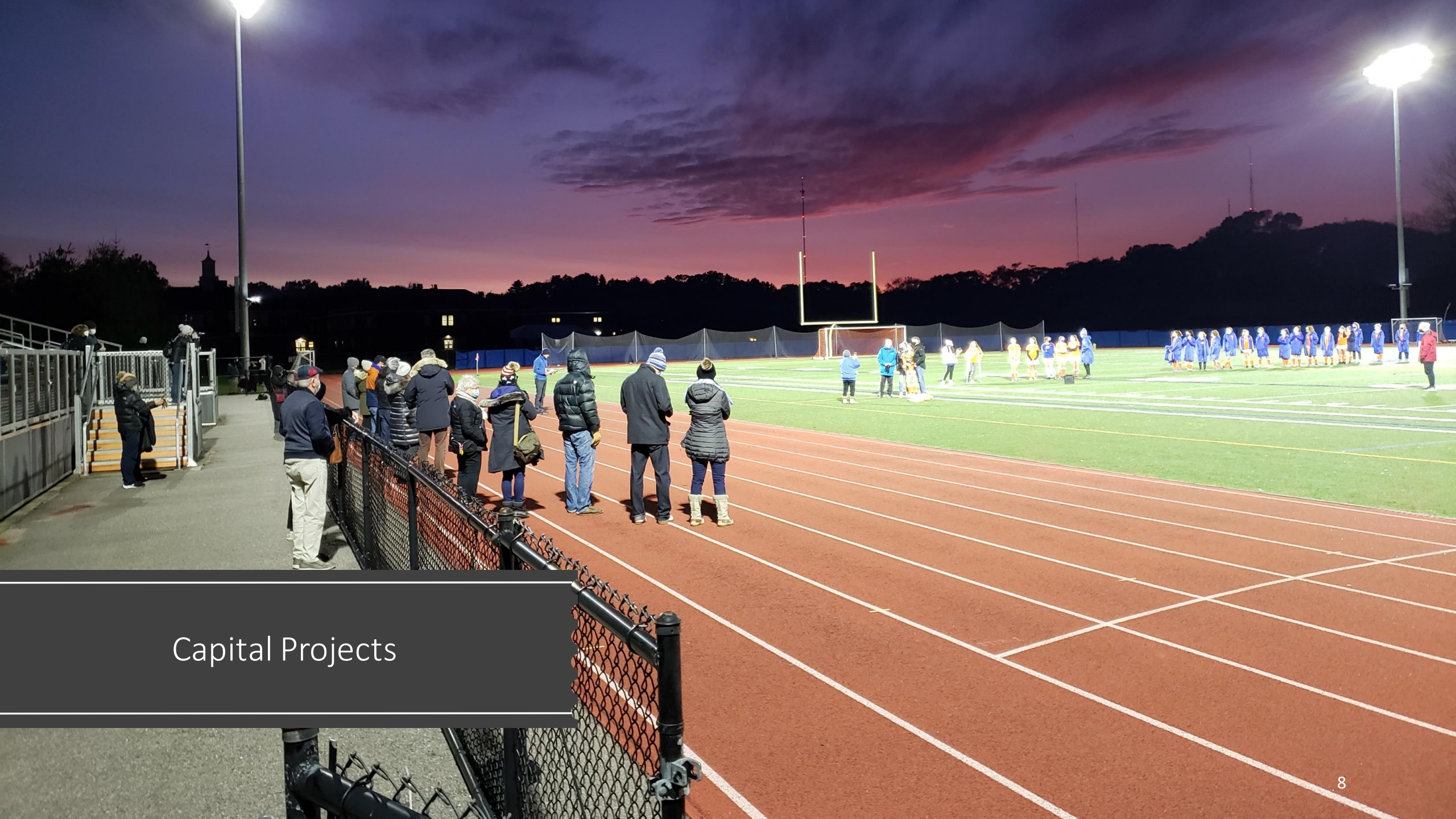


17 sites

22 acres



59 acres



Capital Projects

INVESTING IN PLAYGROUNDS

Surfacing

Playgrounds

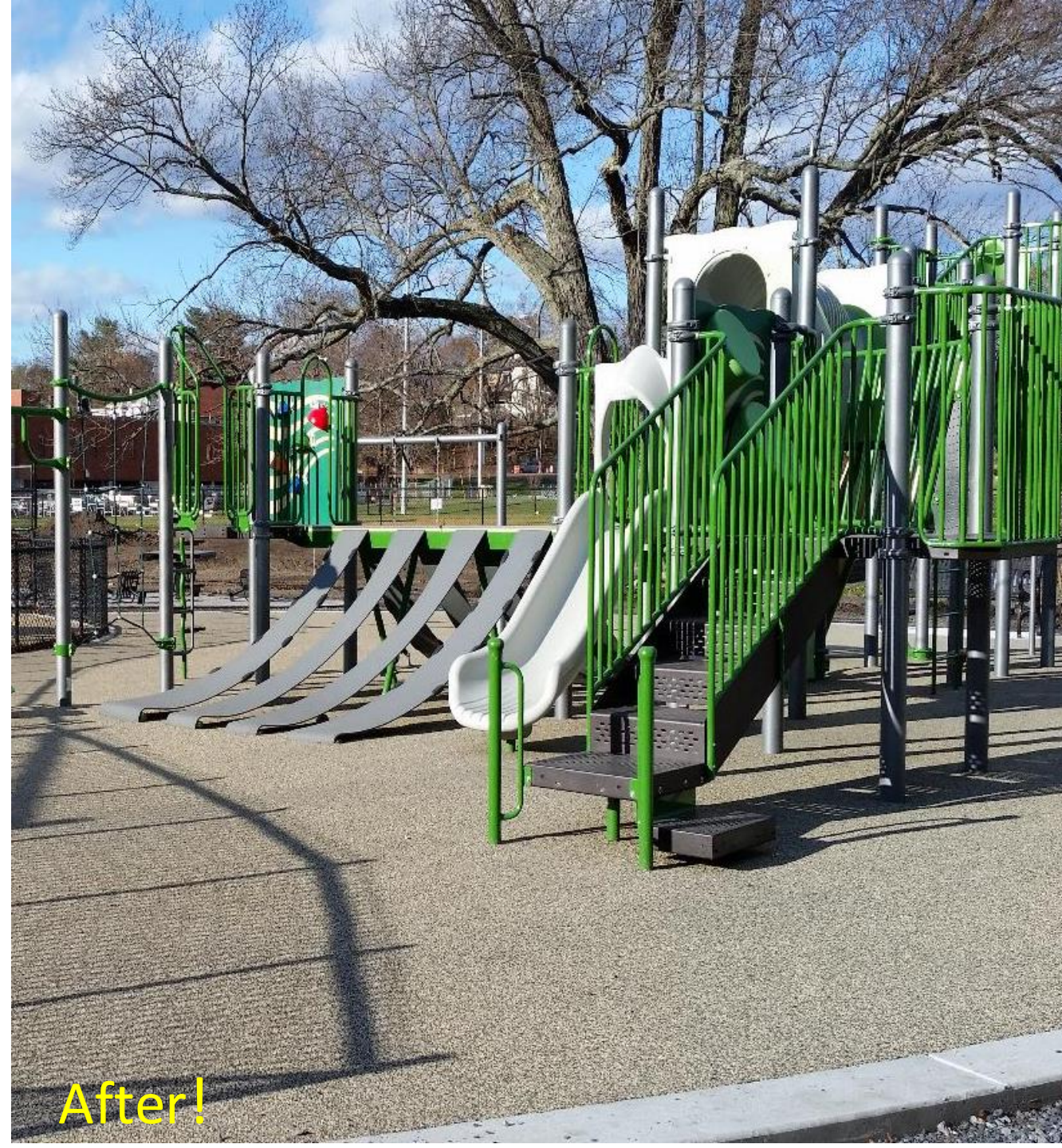
Full Replacements

Repairs



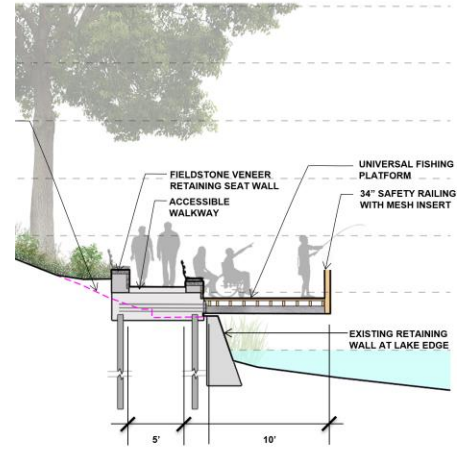


Before...



After!

INVESTING IN PARKS



NEW & UPGRADED AMENITIES:

- Cold Spring park trail
- Waban Hill Reservoir trail
- Marty Sender Path
- Gath Pool
- Levingston Cove
- Splash pads
- Farlow Park
- Community Gardens
- Performance stages







Before...



After!



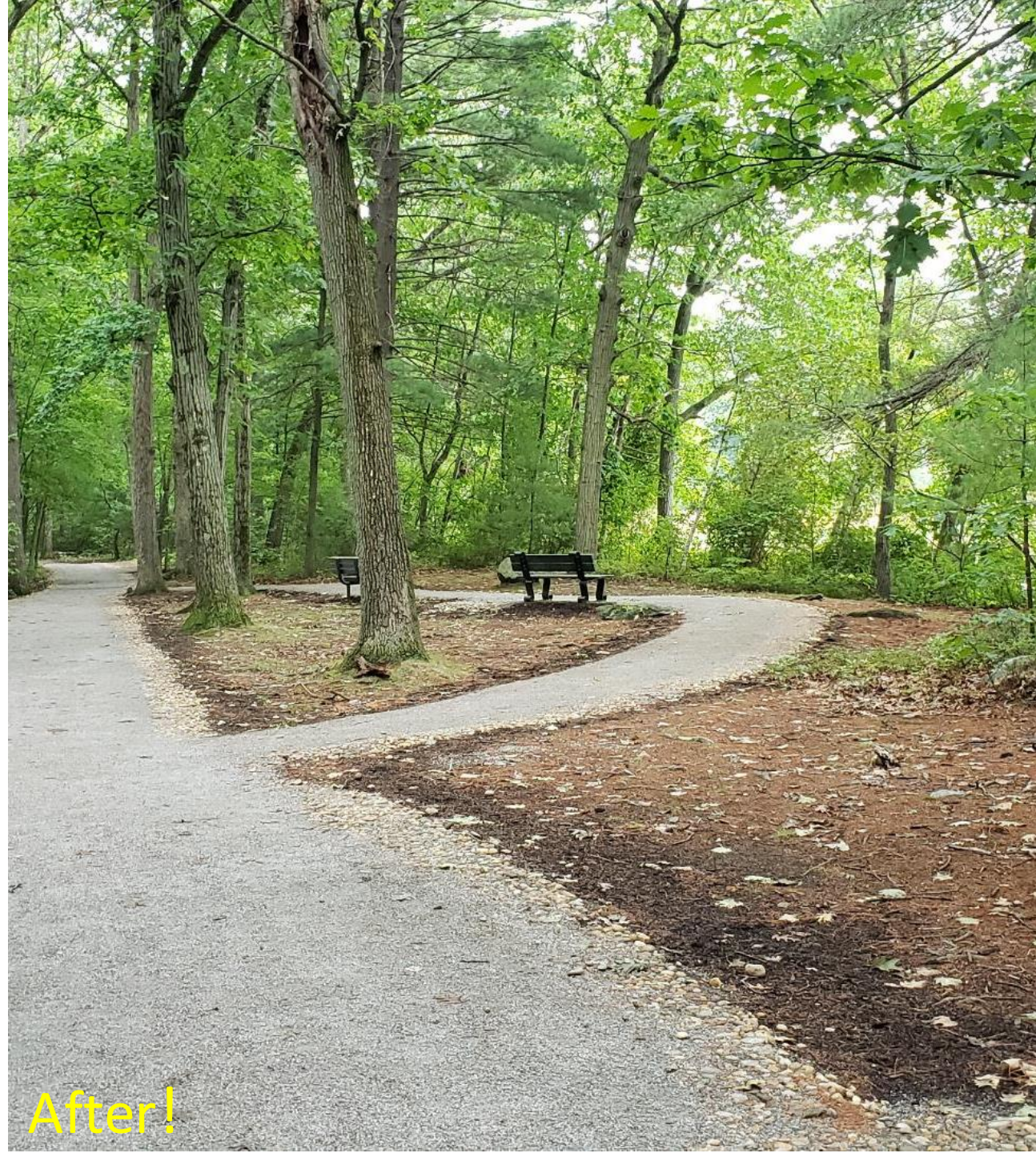
Before...



After!



Before...



After!

INVESTING IN COURTS

Over 100 Courts

(Tennis, Pickleball, Basketball & Bocce)

Goal – Resurfacing every 10 Years

Upcoming courts:

- Cabot
- Pellegrini
- Memorial Playground





CRACK REPAIR MEMBRANE



CRACK REPAIR



SEALCOATING



PAINTING



Before...



After!



Before...



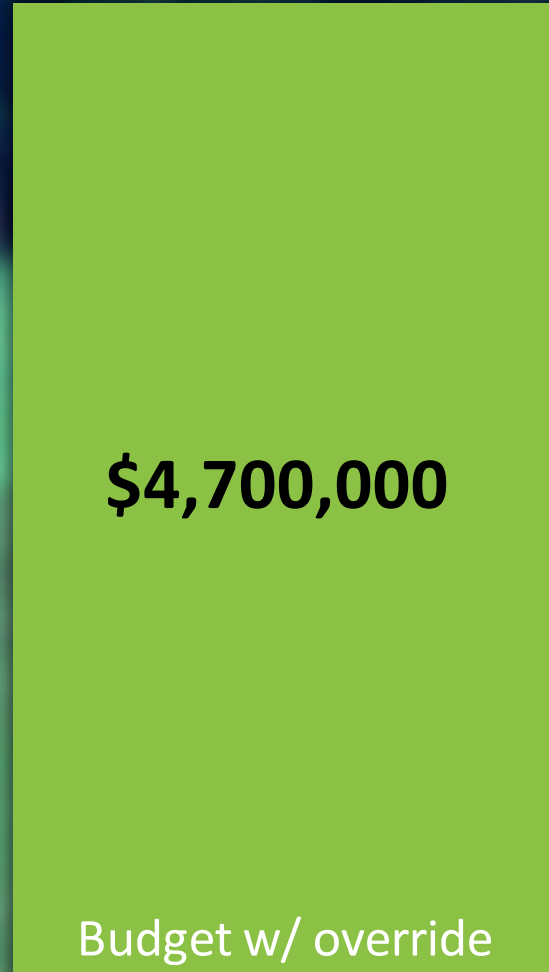
After!

Funding Sources & Partnerships:

- CPC
- Friends Groups/ PTOs
- Grants and State Earmarks
- Sport Partners
- Free Cash
- Operating & Capital Budget
- Developer Mitigation
- ARPA



27% INCREASE



FIELDS | PLAYGROUNDS | PARKS | COURTS

- Improving maintenance
- Expanding care

RESTORING NEWTON'S STREET TREES - \$500,000



Tree Planting

Plant up to **8,000**
new trees by 2030



Tree Pruning

Prune every mature
Street tree in 5 years



Young Tree Care

Proactive care for
improved longevity



RESTORING NEWTON'S STREET TREES



Tree Planting

Plant up to **8,000** new trees by 2030



RESTORING NEWTON'S STREET TREES



Tree Pruning

Prune every mature Street tree in 5 years



RESTORING NEWTON'S STREET TREES



Young Tree Care

Proactive care for improved longevity

RESTORING NEWTON'S STREET TREES



Tree Planting

Plant up to **8,000** new trees by 2030



Tree Pruning

Prune every mature Street tree in 5 years



Young Tree Care

Proactive care for improved longevity

Key takeaways

- By 2030 the new trees will have mitigated over 400,000 pounds of atmospheric carbon.
- Annually the new trees will reduce stormwater runoff by over 300,000 gallons in 2030.
- Mature tree longevity will be improved by at least 25%. Along with improved safety and reduced storm damage.
- Young and new trees will be stronger and will survive to be long term environmental and community assets.
- Impactful progress will be made toward the long term 2050 street tree goal.

RESTORING NEWTON'S STREET TREES



25% INCREASE

NEW TREES | PRUNING | CARE

- 60% More trees planted.
- 400% Increase in mature trees pruned.
- 3,500 young trees cared for each year.



For more information on our
Parks, Fields and Open Space projects visit:
www.newtonma.gov/ParkProjects

For more information on our
Tree Program visit:
www.newtonma.gov/forestry

Voting by Newton for Newton

WHAT WILL THIS COST ME?

OVERRIDE CALCULATOR

City of Newton, Massachusetts

Estimated Property Tax Increase From March 2023 Property Tax
Override

Please enter an address below:

House Number

Street Name

Unit (if applicable)

Search for this Property

[NEWTONMA.GOV/OVERRIDE](https://newtonma.gov/override)

Voting by Newton for Newton

WHAT WILL THIS COST ME?

MEDIAN SINGLE FAMILY HOME VALUE \$1.2 million IMPACT

Q1: OPERATING
OVERRIDE
First Year (FY24)
\$290

Q2 & 3: DEBT EXCLUSION
OVERRIDES
Seventh Year (FY30)
+\$183

~25th PERCENTILE SINGLE FAMILY HOME VALUE \$750,000 IMPACT

Q1: OPERATING
OVERRIDE
First Year (FY24)
\$173

Q2 & 3: DEBT EXCLUSION
OVERRIDES
Seventh Year (FY30)
+\$110

Voting by Newton for Newton

TAX ASSISTANCE FOR PEOPLE WHO ARE OLDER, DISABLED OR VETERANS

DOUBLING 7 PROGRAMS

EXPANDING 2 PROGRAMS

- Tax Relief
- Tax Deferral
- Tax Exemption
- Tax Work-Off (with Proxies)
- Water/Sewer Discount

Voting by Newton for Newton

OVERRIDE CONTEXT

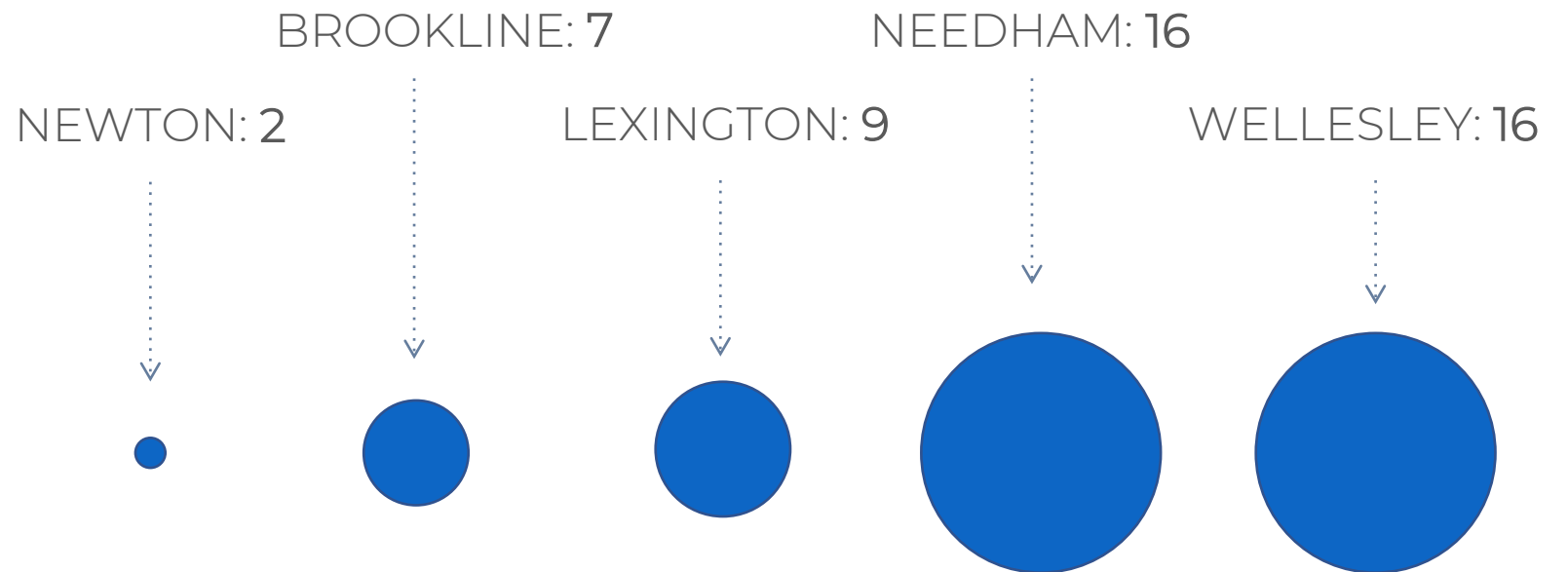
**NEWTON
OVERRIDES
EVERY
10 YEARS**

2002

2013

2023?

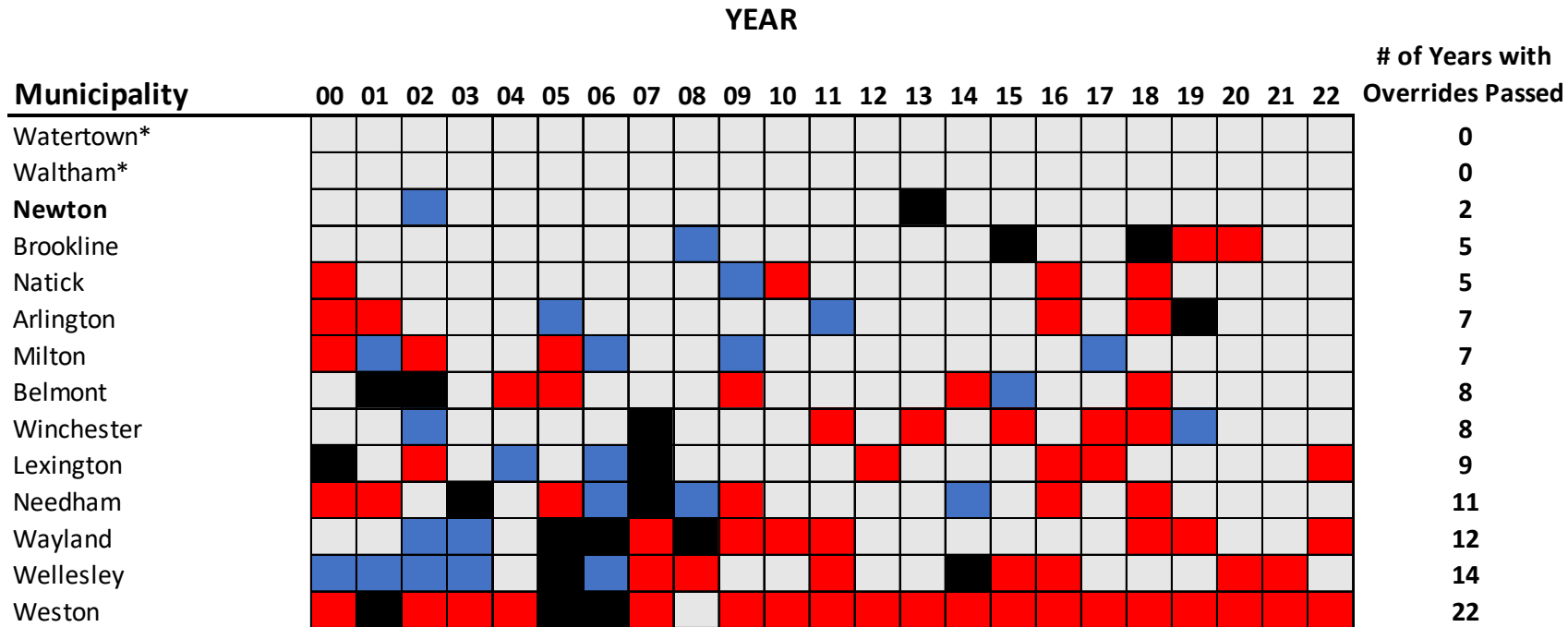
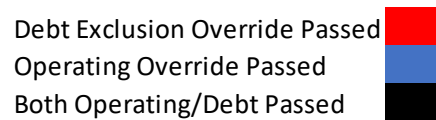
NUMBER OF OVERRIDES SINCE 2000



UPDATE 1/3/2023: Further research has indicated that the numbers of overrides since 2000 for the above communities reflect mixing the number of years that overrides passed with the number of total ballot questions. For more specific data on these and additional communities, please see the chart on the following slide.

OVERRIDE NEIGHBORING AND PEER COMMUNITY COMPARISON

Municipal Overrides with Comparable Communities



* Watertown and Waltham both have higher levels of new growth, which has helped obviate the need for an override. Between FY2019-FY2023, Watertown's new growth averaged 4.85% and Waltham's averaged 2.58%, compared to Newton's 1.65%.



2023 OVERRIDE

Voting by Newton
for Newton on
Three Questions