

SPEARS COMMUNITY GARDEN **SCHEMATIC DESIGN**

PARKS AND RECREATION COMMISSION
NOVEMBER 21, 2022



An aerial photograph of a residential street, showing a road with several cars, bare trees, and houses. The image is faded and serves as a background for the text.

AGENDA

SCHEDULE

OVERALL PROJECT GOALS

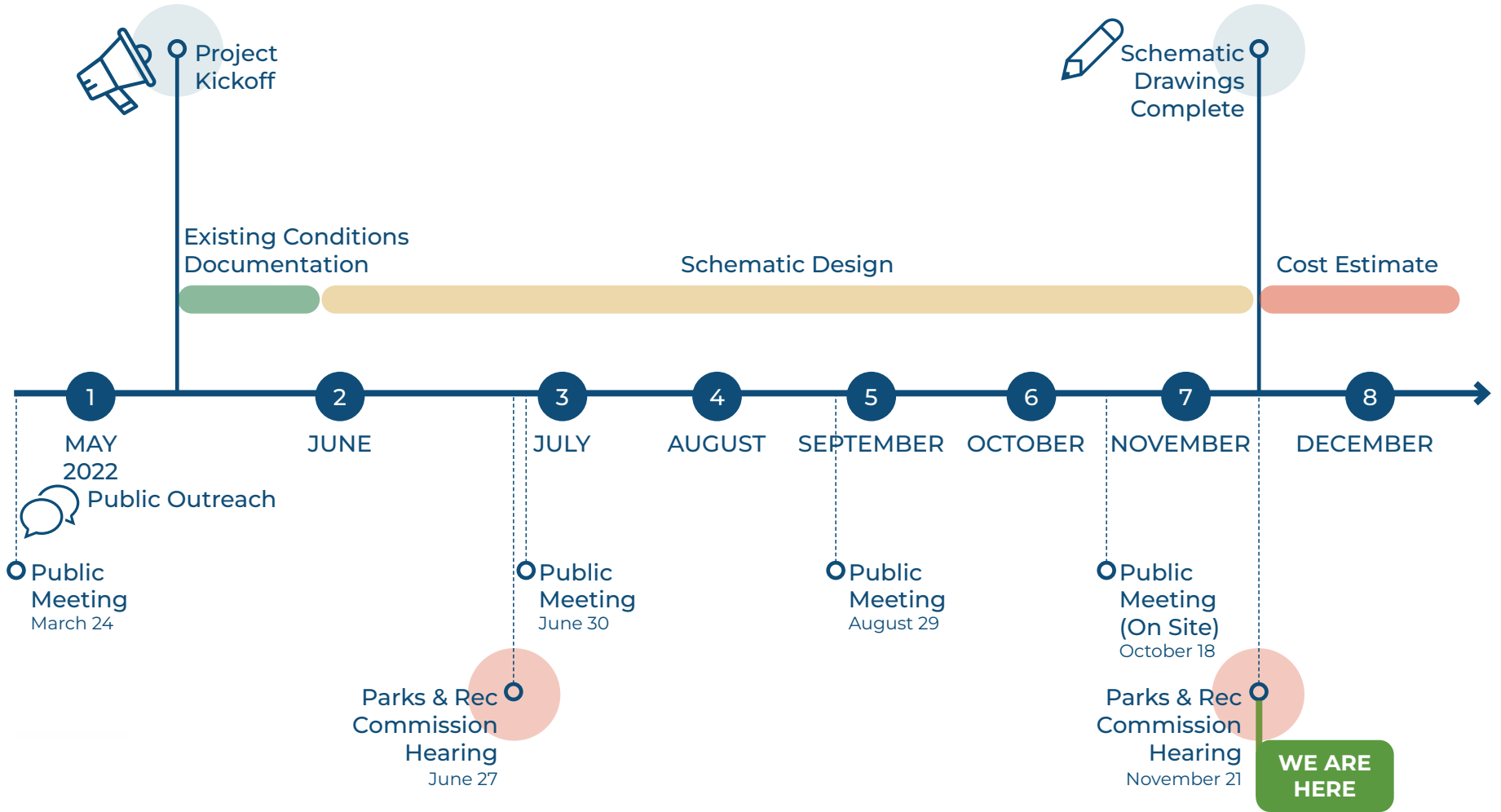
OPPORTUNITIES AND CONSTRAINTS

WHAT WE HEARD

PREFERRED CONCEPT

DISCUSSION AND NEXT STEPS

SCHEDULE



OVERALL PROJECT GOALS

- Provide enclosed garden beds with gardening medium (clean soil in beds).
- Design accessible garden beds that provide ability to work at seating height.
- Create a seating area/gathering space for site users.
- Use accessible stone dust materials for pathways between garden beds.
- Provide water service and distribute a sufficient number of yard hydrants throughout the plots.
- Provide a perimeter planting buffer.
- Add fencing that protects the raised beds from animals.
- Incorporate a storage area and compost collection area.
- Locate seating in shaded areas, utilizing shade from existing trees.

EXISTING SITE IMAGES



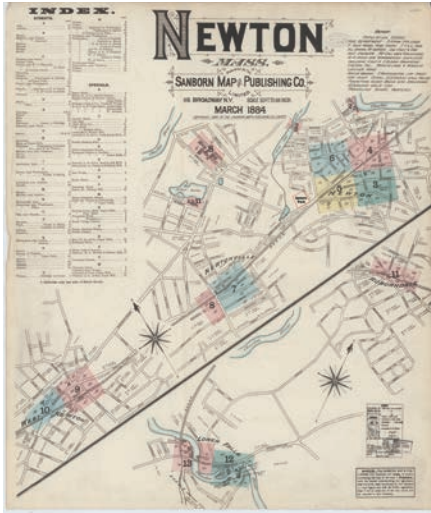
View from above



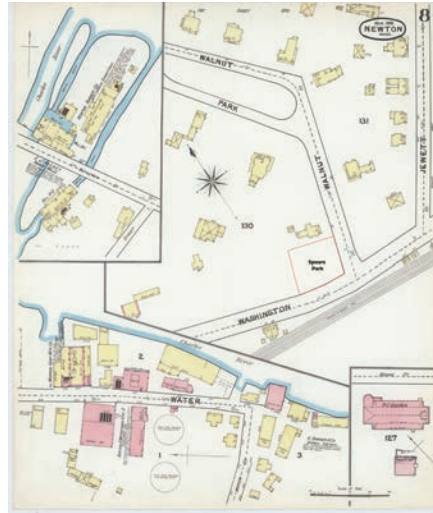
View looking east

SITE INVESTIGATION

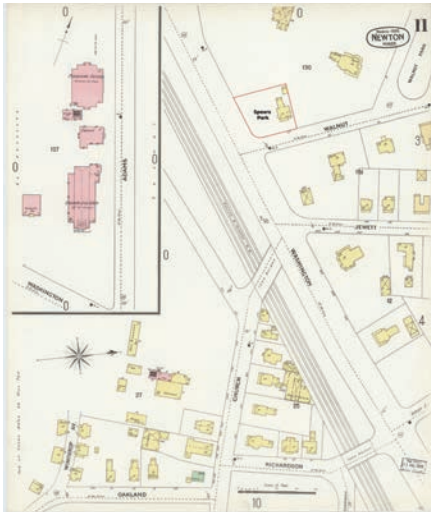
SANBORN MAPS



1884



1892



1898



1910

- Sanborn maps show general commercial and industrial use (including RR operations) dating back to the late 1800s in the surrounding area.
- The property appears to have been developed as a single family residential dwelling around 1892.
- Based on the limited information available right now, we can assume there is typical urban fill underlying the property.

WHAT WE HEARD

SECOND AND THIRD MEETING



SECOND MEETING



THIRD MEETING

- Provide a variety in seating types, chair seating is preferred over benches.
- Community gathering space outside of fence/community garden confines, and located away from Washington Street.
- Place tables in an area with shade.
- Add a bike rack, community notice board, and welcome sign.
- Add more picnic tables.

WHAT WE HEARD

ON-SITE MEETING RECAP



- Creating a community gathering space/seating area outside of garden space was endorsed.
- Standardize the bed sizes.
- No parking at the vehicular entrance.
- Provide more material storage to back of property.
- Buffer planting with pollinator species endorsed.



PREFERRED CONCEPT

2,400 SF TOTAL - 30 GARDEN BEDS 20'X4' EACH



BENCH



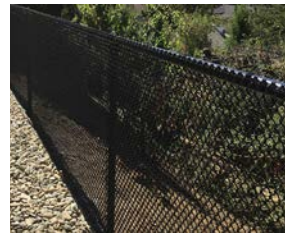
PICNIC TABLE



GARDEN BEDS



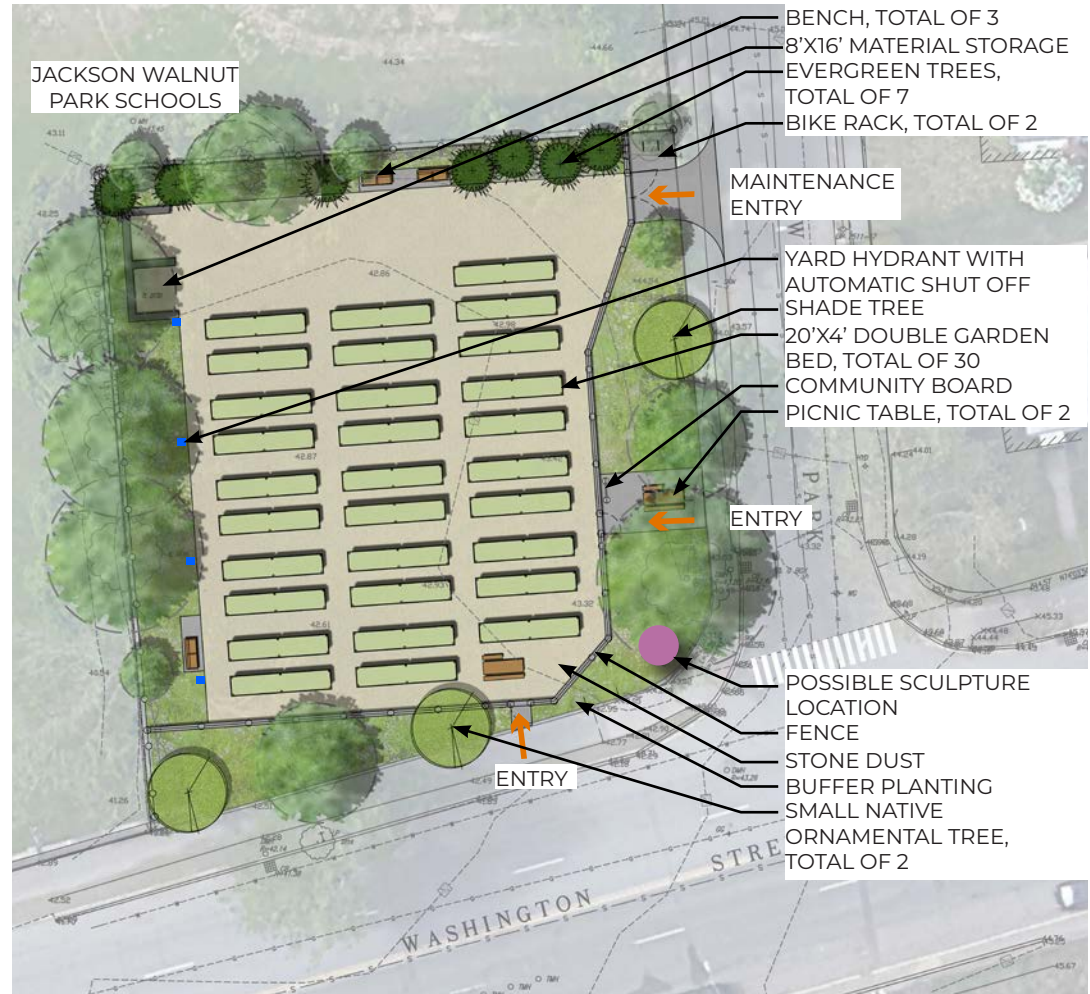
COMPOST BIN



1" FABRIC BLACK VINYL CHAIN LINK FENCE



MATERIAL STORAGE AREA



THANK YOU

.....
LET'S DISCUSS!

