

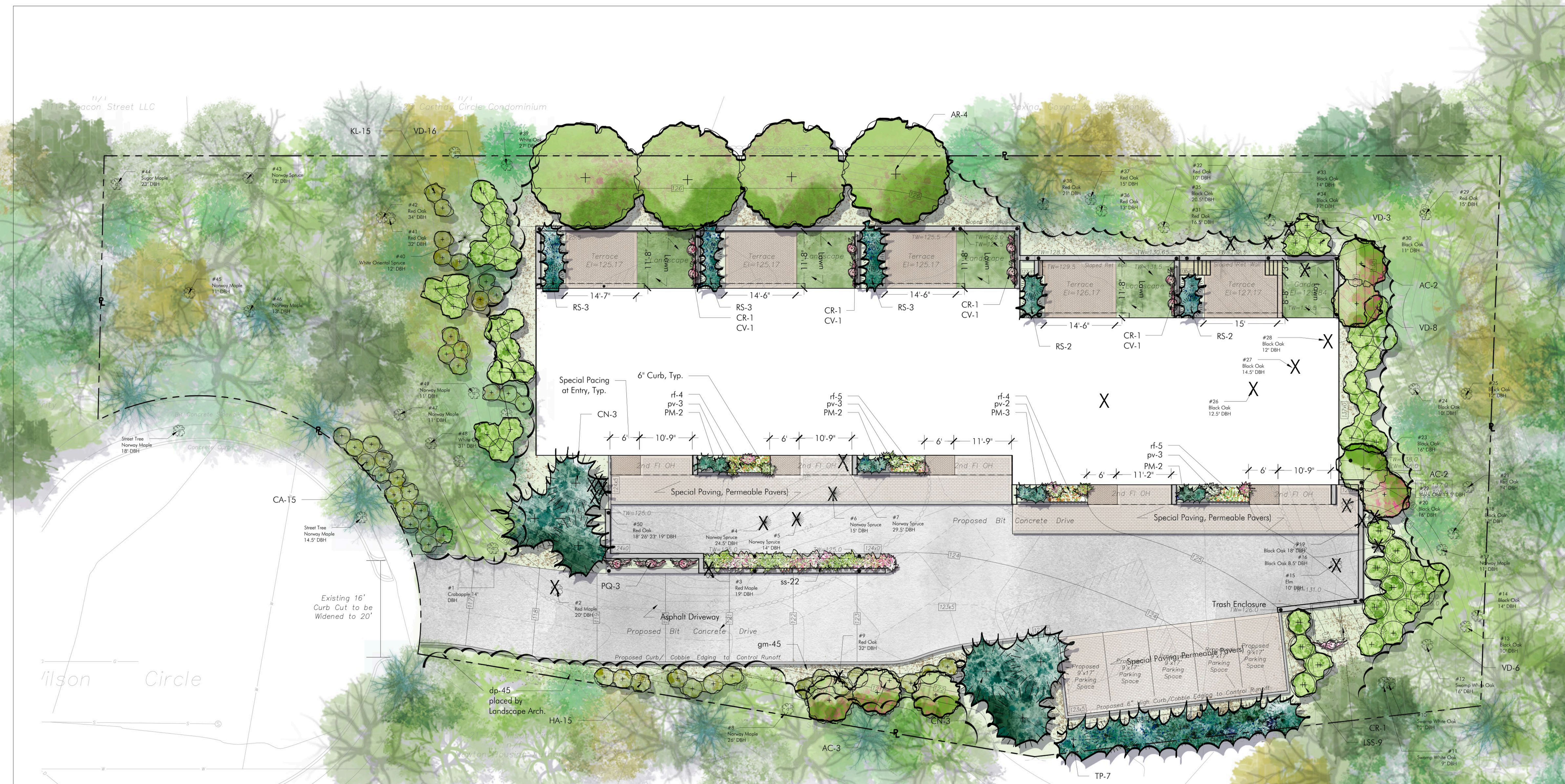


WILSON CIRCLE
NEWTON, MA

ILLUSTRATIVE LANDSCAPE PLAN

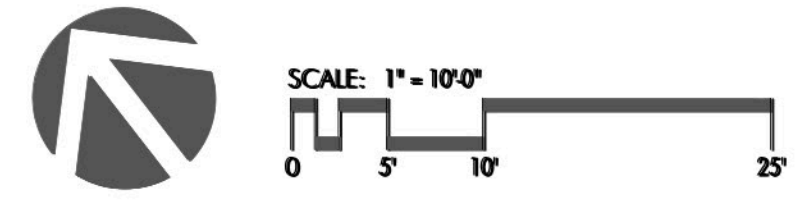
Project #: Date: 08-31-2022
Drawn by: JN/WK Reviewed: BH
Scale: 1" = 10'-0"

Revisions:



PROPOSED PLANT LIST

KEY	QTY	LATIN NAME	COMMON NAME	MIN. SIZE	NOTES
TREES					
AR	4	<i>Acer rubrum</i> 'Armstrong'	Columnar Red Maapple	3'-3.5' cal.	B&B
AL	8	<i>Amelanchier laevis</i>	Serviceberry	2.5'-3' single stem	10'-12' multi stem B&B
CN	6	<i>Chamaecyparis nootkatensis</i> 'Pendula'	Weeping Alaskan Cedar	8'-10'; 5" cal.	B&B
LSS	9	<i>Liquidambar styraciflua</i> 'Slender Silhouette'	Fastigate Sweetgum	3'-3.5' cal.	B&B
TP	7	<i>Thuja plicata</i> 'Green Giant'	Green Giant Cedar	10'-12'; 6" cal.	B&B
SHRUBS (
CR	5	<i>Campsis radicans</i>	Trumpet Vine	2 gal.	pots
CA	15	<i>Clethra alnifolia</i>	Summersweet	3 gal.	Pots
HA	15	<i>Hydrangea arborescens</i> 'Annabelle'	Annabelle Hydrangea	3 gal.	Pots
KL	15	<i>Kalmia latifolia</i>	Mountain Laurel	15"-18" - 3 gal.	Pots
PQ	3	<i>Pathenocissus quinquefolia</i>	Virginia Creeper	2 gal.	
PM	8	<i>Pinus mugo</i> 'Pumilio'	Compact Mugo Pine	24"-30"	Pots
RA	13	<i>Rhododendron</i> 'Scintillation'	Blush Pink Rhododendron	30"-36"	Pots
VD	33	<i>Viburnum dentatum</i>	Arrowwood Viburnum	3' ht.	Pots
PERENNIALS					
dp	45	<i>Dennstaedtia punctilobula</i>	Hay-Scented Fern	1 qt.	Pots, 24" o.c.
gm	45	<i>Geranium macrorhizum</i>	Bigroot Geranium	1 gal.	Pots, 18" o.c.
pv	12	<i>Panicum virgatum</i> 'Shenandoah'	Redleafed Switch Grass	2 gal.	Pots
rf	18	<i>Rudbeckia fulgida</i> 'Goldstrum'	Black-eyed-Susan	1 gal.	
ss	22	<i>Schizachyrium scoparium</i> 'The Blues'	Little Bluestem	2 gal.	



Y:\Wilson Circle\CAD\DWG\WINS_Base.dwg