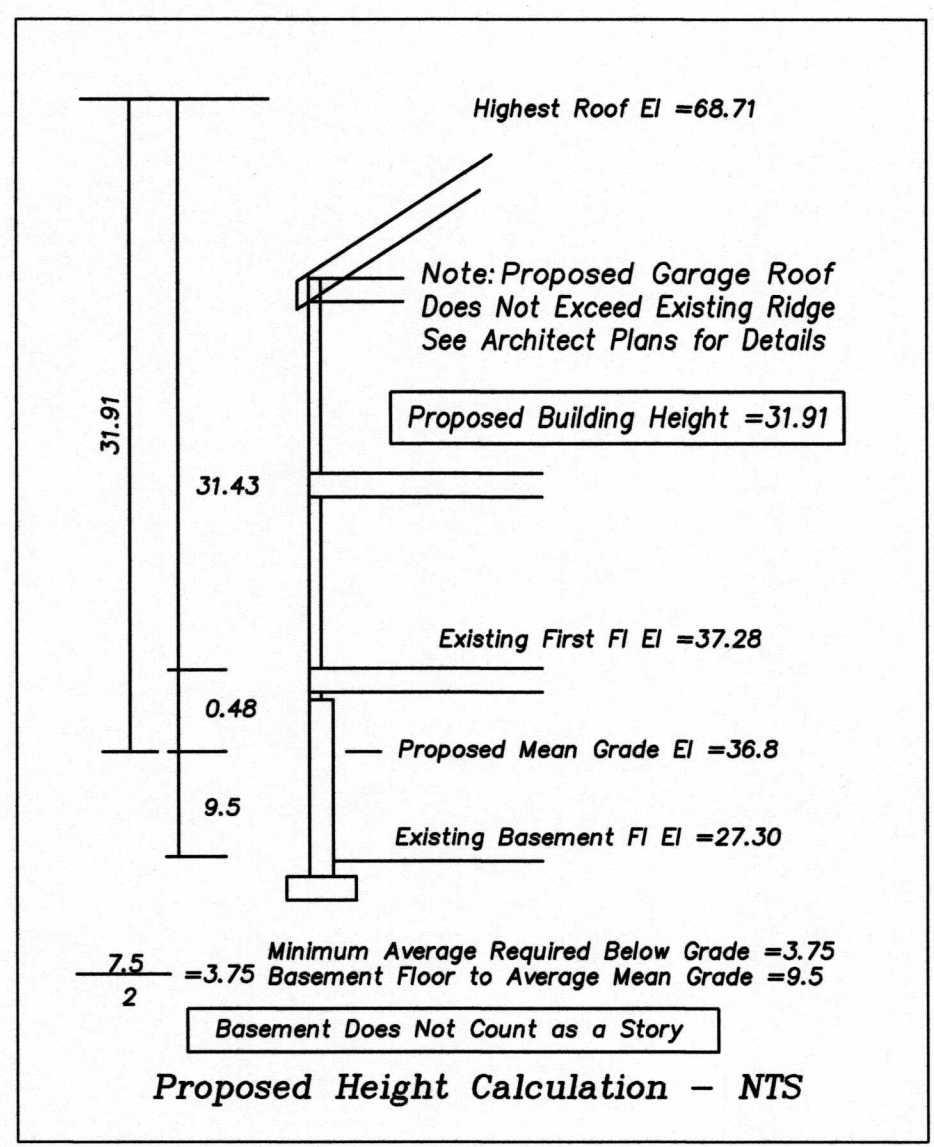
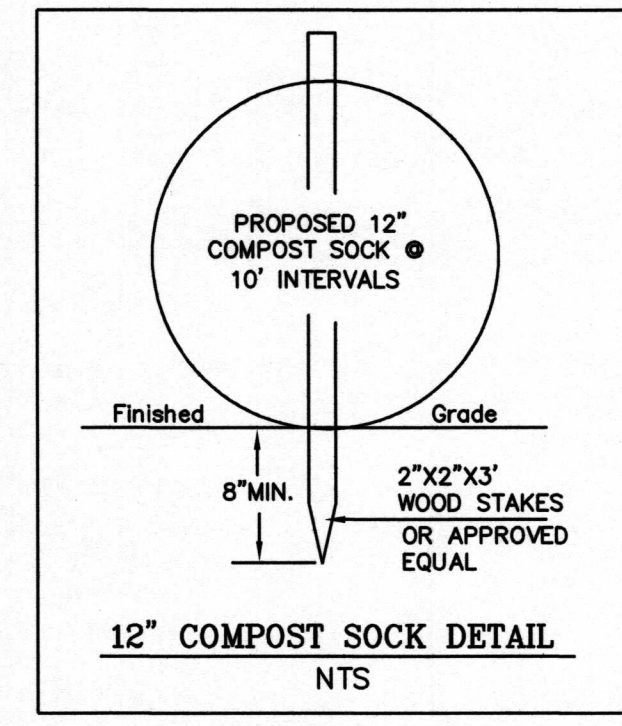
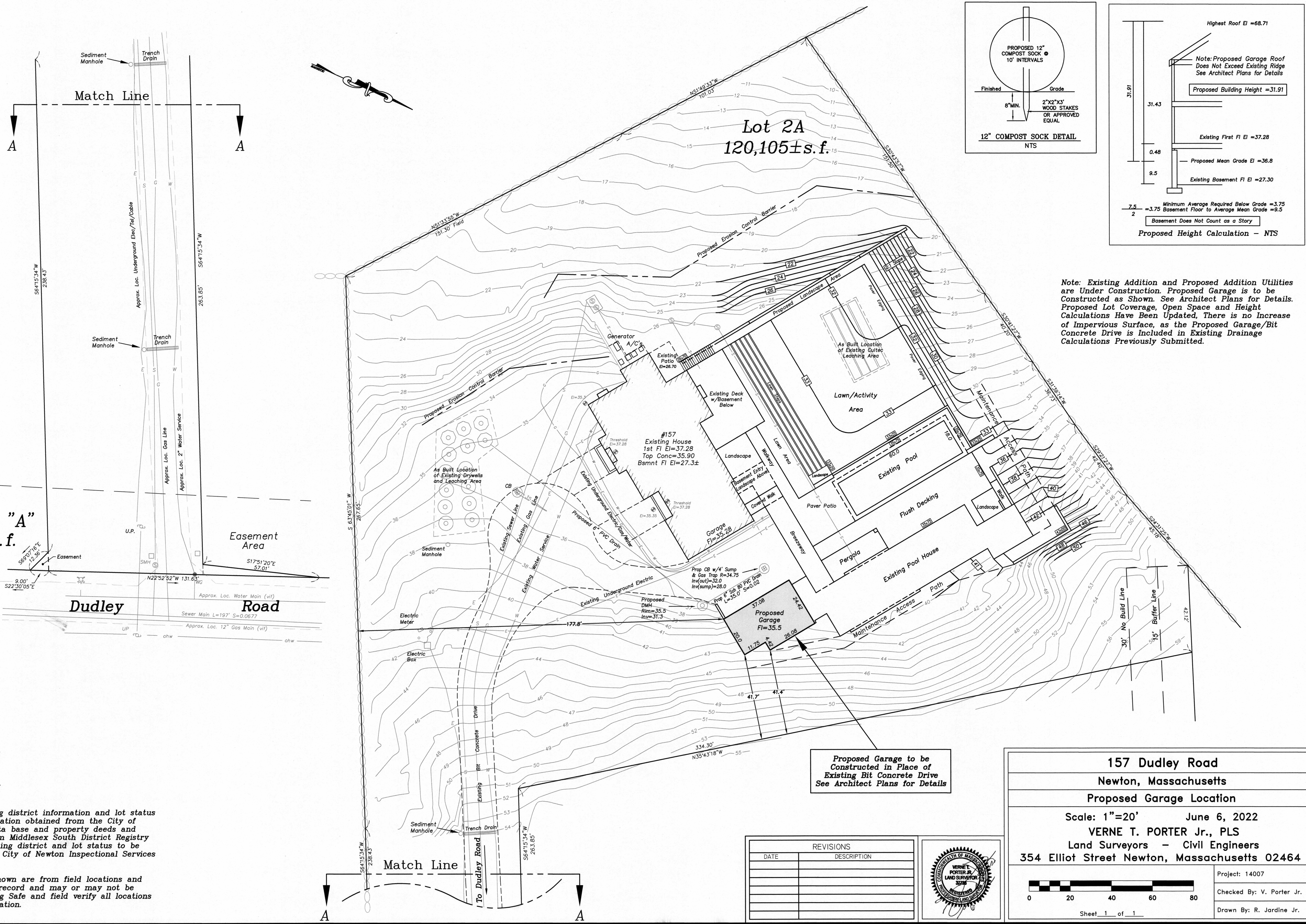


**Dig Safe**  
 Excavators  
 Before you dig contact the Dig Safe Center.  
 To prevent damage to telephone, gas or  
 electric underground facilities of member  
 utilities, call toll free  
 Massachusetts state law requires  
 notification at least three business days  
 before you start digging operations. In an  
 emergency, call immediately.

Note: Existing Addition and Proposed Addition Utilities are Under Construction. Proposed Garage is to be Constructed as Shown. See Architect Plans for Details. Proposed Lot Coverage, Open Space and Height Calculations Have Been Updated, There is no Increase of Impervious Surface, as the Proposed Garage/Bit Concrete Drive is Included in Existing Drainage Calculations Previously Submitted.

**Parcel "A"**  
 40±s.f.

**Dudley Road**

**Lot 2A**  
 120,105±s.f.

Proposed Garage to be Constructed in Place of Existing Bit Concrete Drive See Architect Plans for Details

Zoning District: SRI  
 New Lot Status  
 Allowed/Required Lot Coverage=15%  
 Open Space=70.0%  
 Existing Lot Coverage=6.79%  
 Open Space=83.42%  
 Proposed Lot Coverage=7.49%  
 Open Space=84.12%

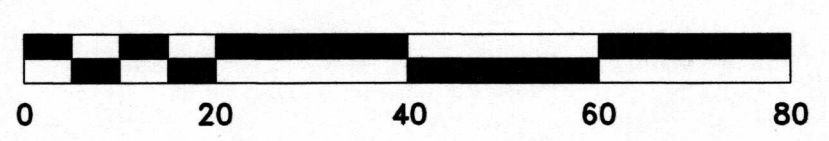
Note: Existing zoning district information and lot status is based on information obtained from the City of Newton on-line data base and property deeds and plans obtained from Middlesex South District Registry of Deeds. Final zoning district and lot status to be determined by the City of Newton Inspectional Services Department.

Existing utilities shown are from field locations and available plans of record and may or may not be correct. Contact Dig Safe and field verify all locations prior to any excavation.

REVISIONS	
DATE	DESCRIPTION



**157 Dudley Road**  
 Newton, Massachusetts  
**Proposed Garage Location**  
 Scale: 1"=20' June 6, 2022  
 VERNE T. PORTER Jr., PLS  
 Land Surveyors - Civil Engineers  
 354 Elliot Street Newton, Massachusetts 02464  
 Project: 14007  
 Checked By: V. Porter Jr.  
 Drawn By: R. Jardine Jr.



Sheet 1 of 1