

NUISANCE VEGETATION MANAGEMENT

CHARLES RIVER COUNTRY CLUB

483 DEDHAM STREET
 NEWTON, MA 02459

SHEET INDEX

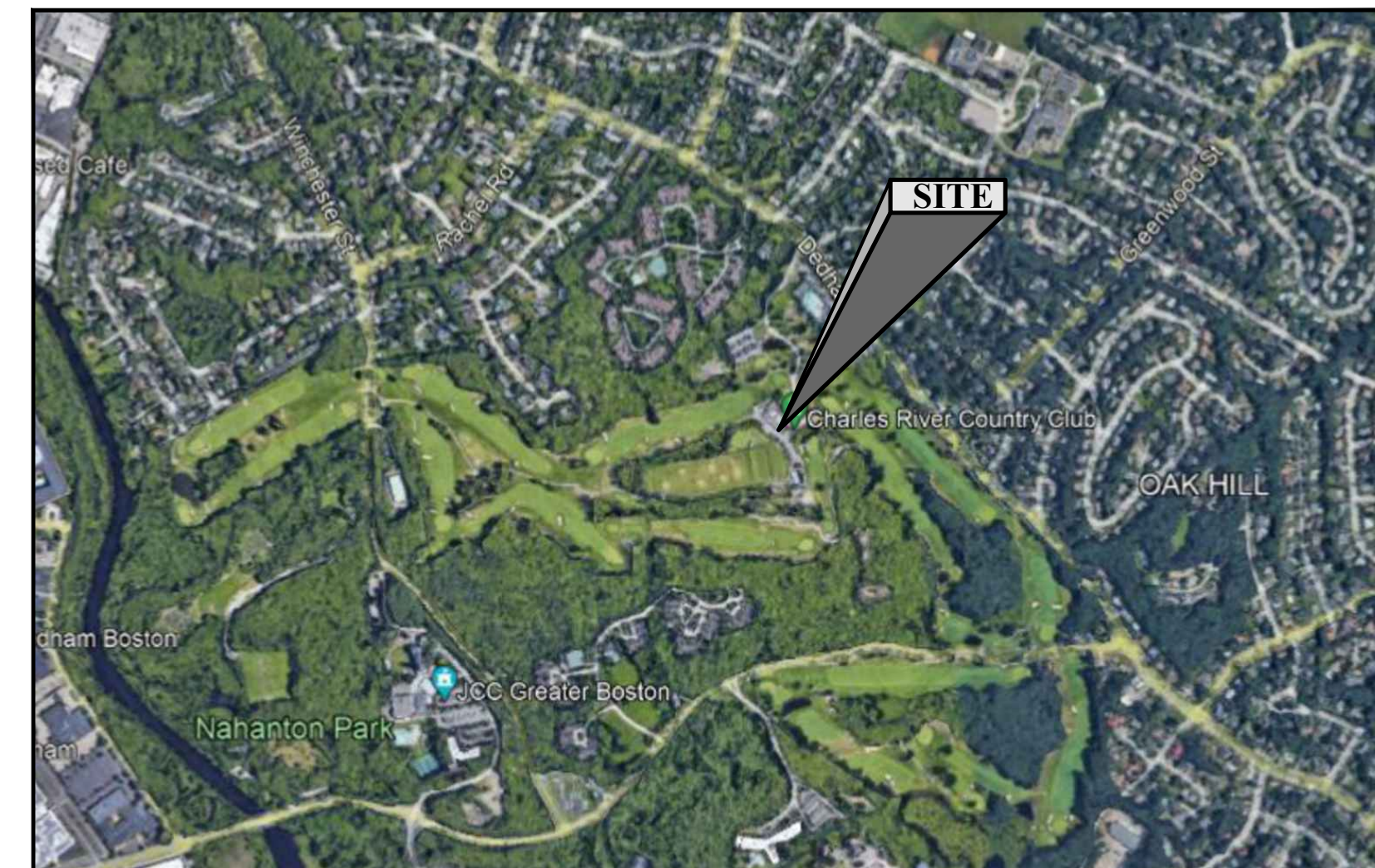
No.	Title	Issue Date
C001	Cover Sheet	November 8, 2022
C101	Index Sheet	November 8, 2022
C102	Site Plan - Hole #1	November 8, 2022
C103	Site Plan - Hole #4	November 8, 2022
C104	Site Plan - Hole #15	November 8, 2022
C105	Site Plan - Hole #17	November 8, 2022

REVISIONS/ISSUES

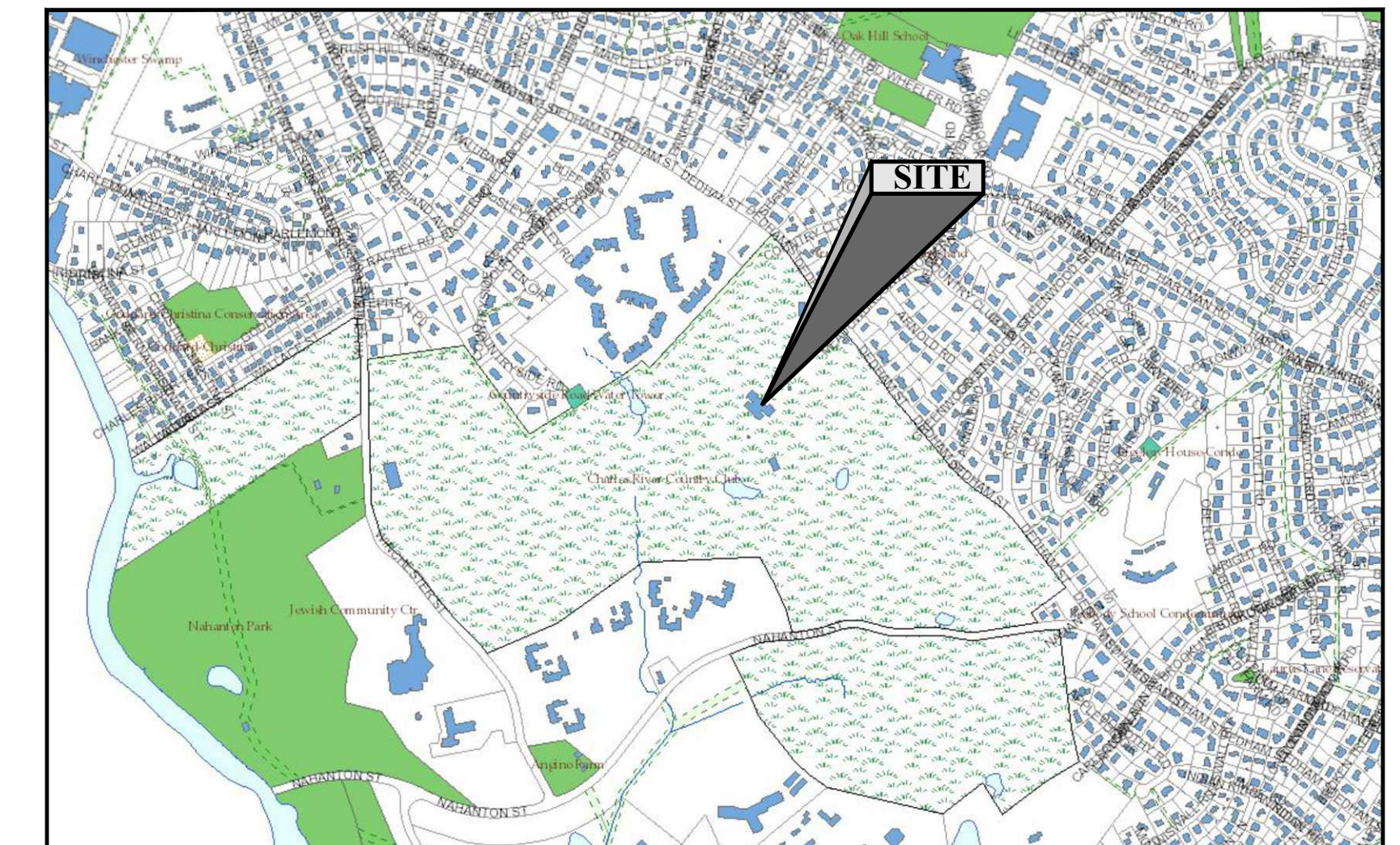
No.	Note	Date
1	Issued for Notice of Intent	November 8, 2022

REFERENCE PLAN INDEX

No.	Title	Issue Date
-----	-------	------------



LOCUS PLAN - AERIAL
 SOURCE: GOOGLE EARTH SCALE: 1"=1,000'



LOCUS PLAN - GIS
 SOURCE: NEWTON GIS SCALE: 1"=1,000'

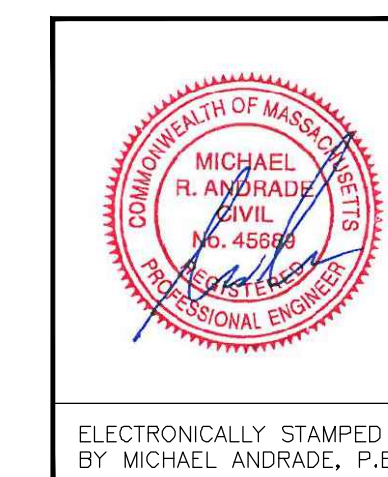
OWNER
 Charles River Country Club
 483 Dedham Street
 Newton, MA 02549

CONSULTANT
 Avalon Consulting Group
 41 Cal's Court
 Taunton, MA 02780

APPLICANT
 Charles River Country Club
 483 Dedham Street
 Newton, MA 02549

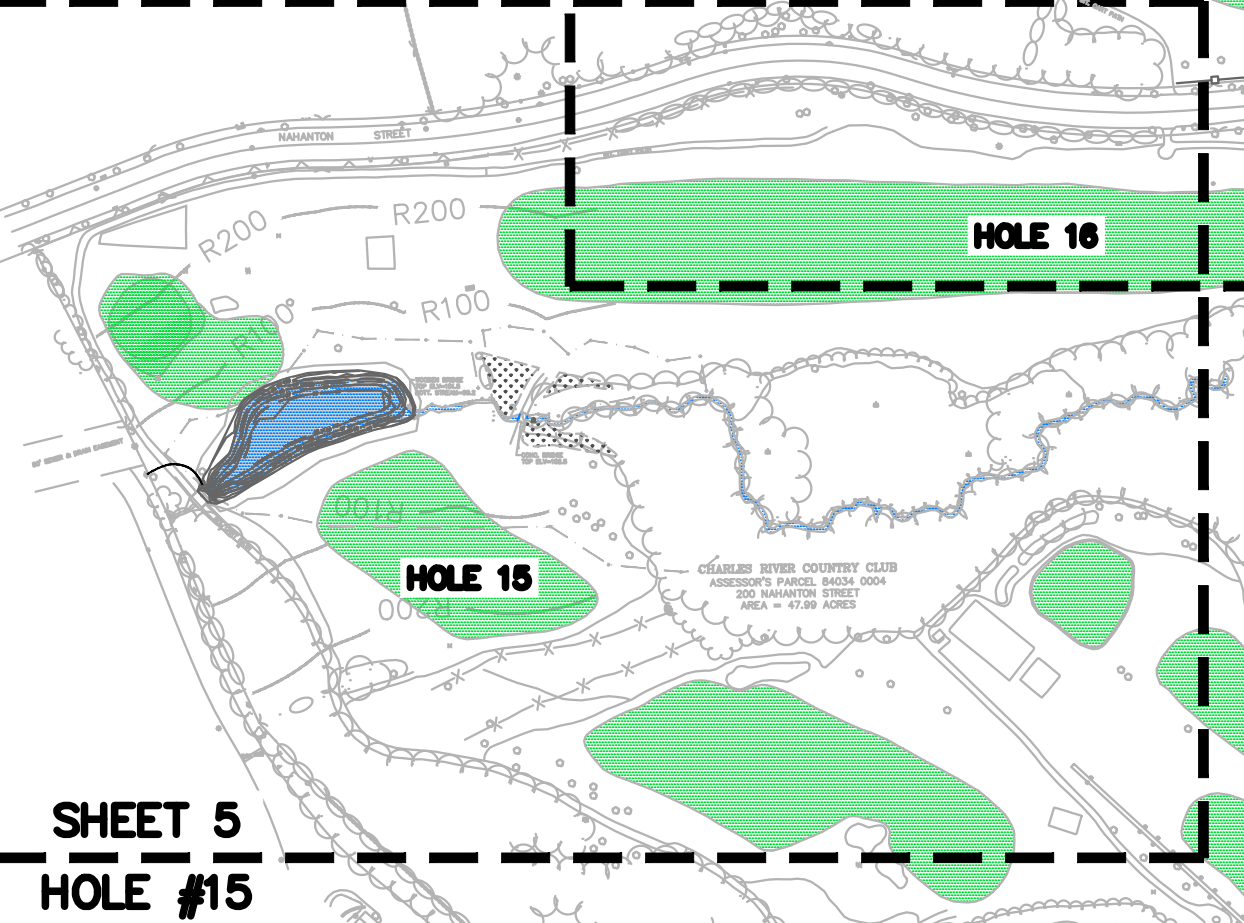
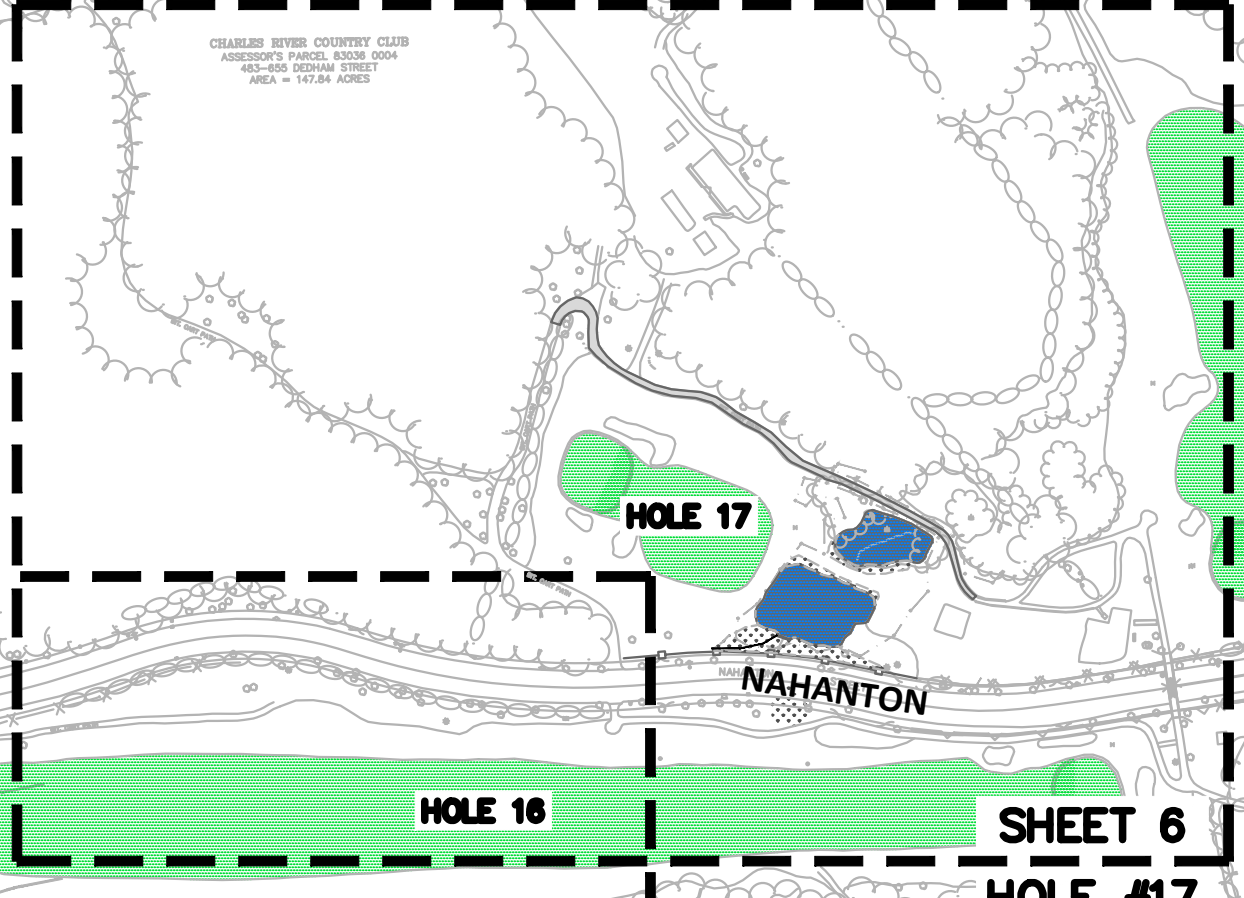
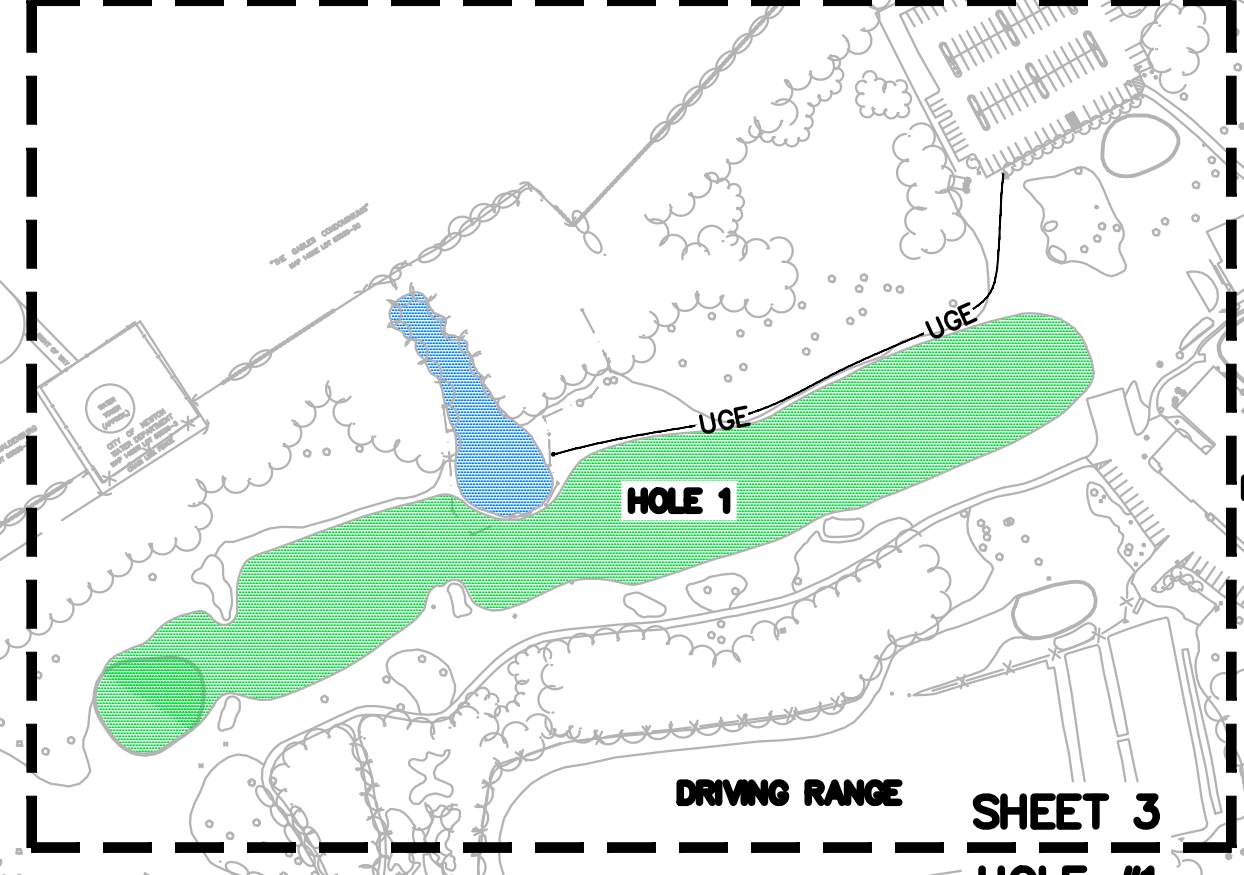
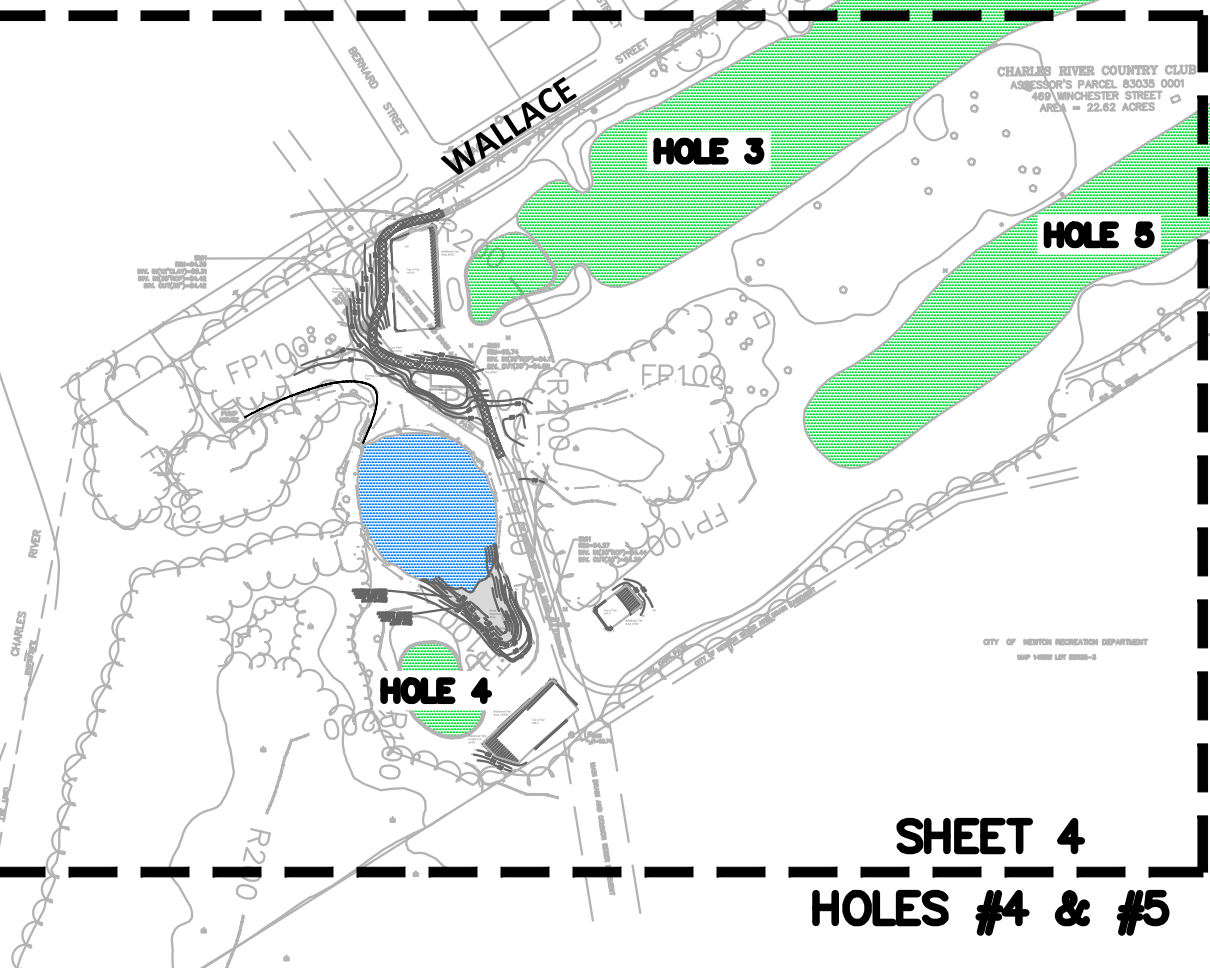
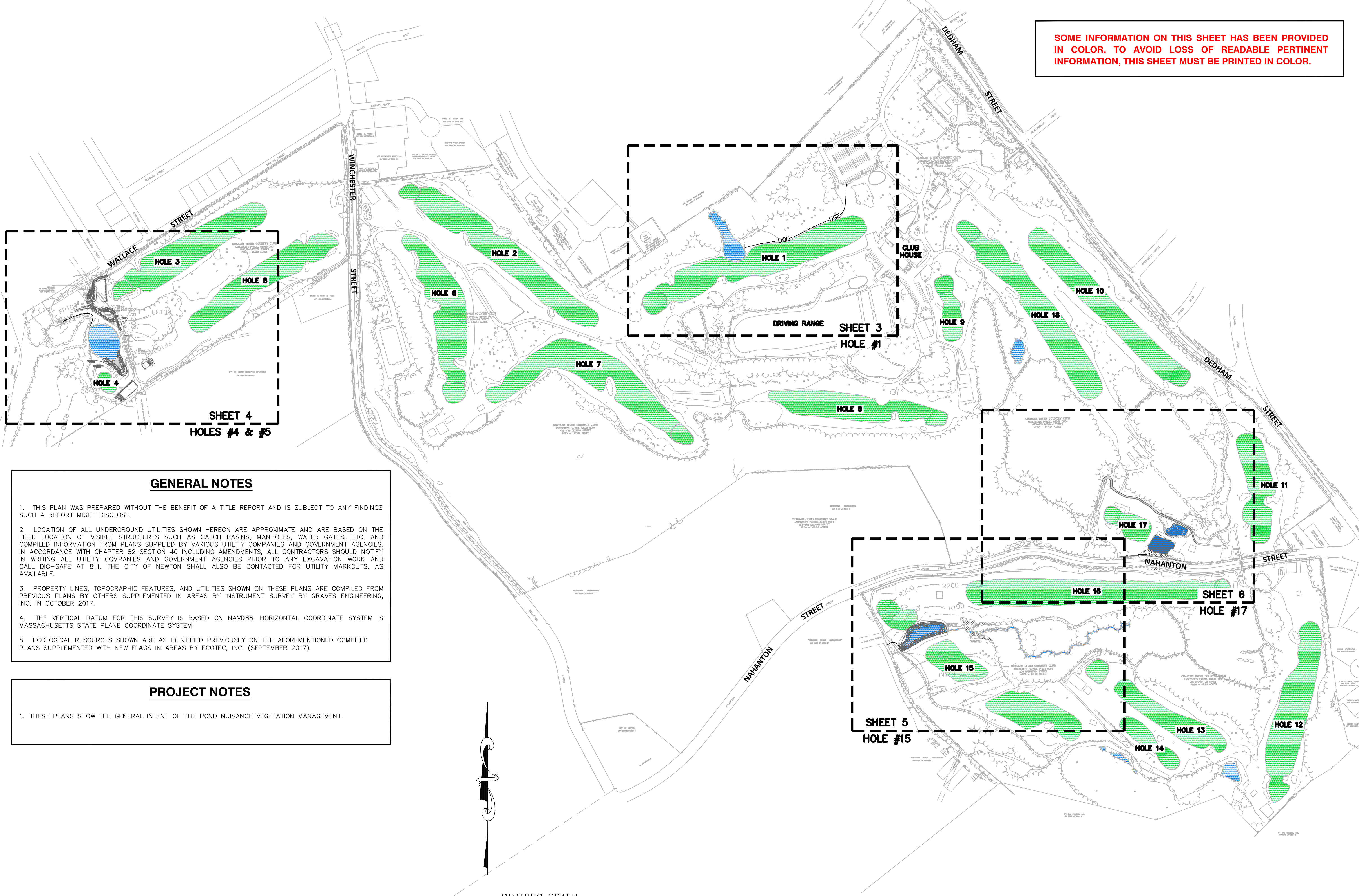


100 GROVE STREET | WORCESTER MA 01605
 T 508-856-0321 | F 508-856-0357
 gravesengineering.com



ELECTRONICALLY STAMPED
 BY MICHAEL ANDRADE, P.E.

SOME INFORMATION ON THIS SHEET HAS BEEN PROVIDED IN COLOR. TO AVOID LOSS OF READABLE PERTINENT INFORMATION, THIS SHEET MUST BE PRINTED IN COLOR.

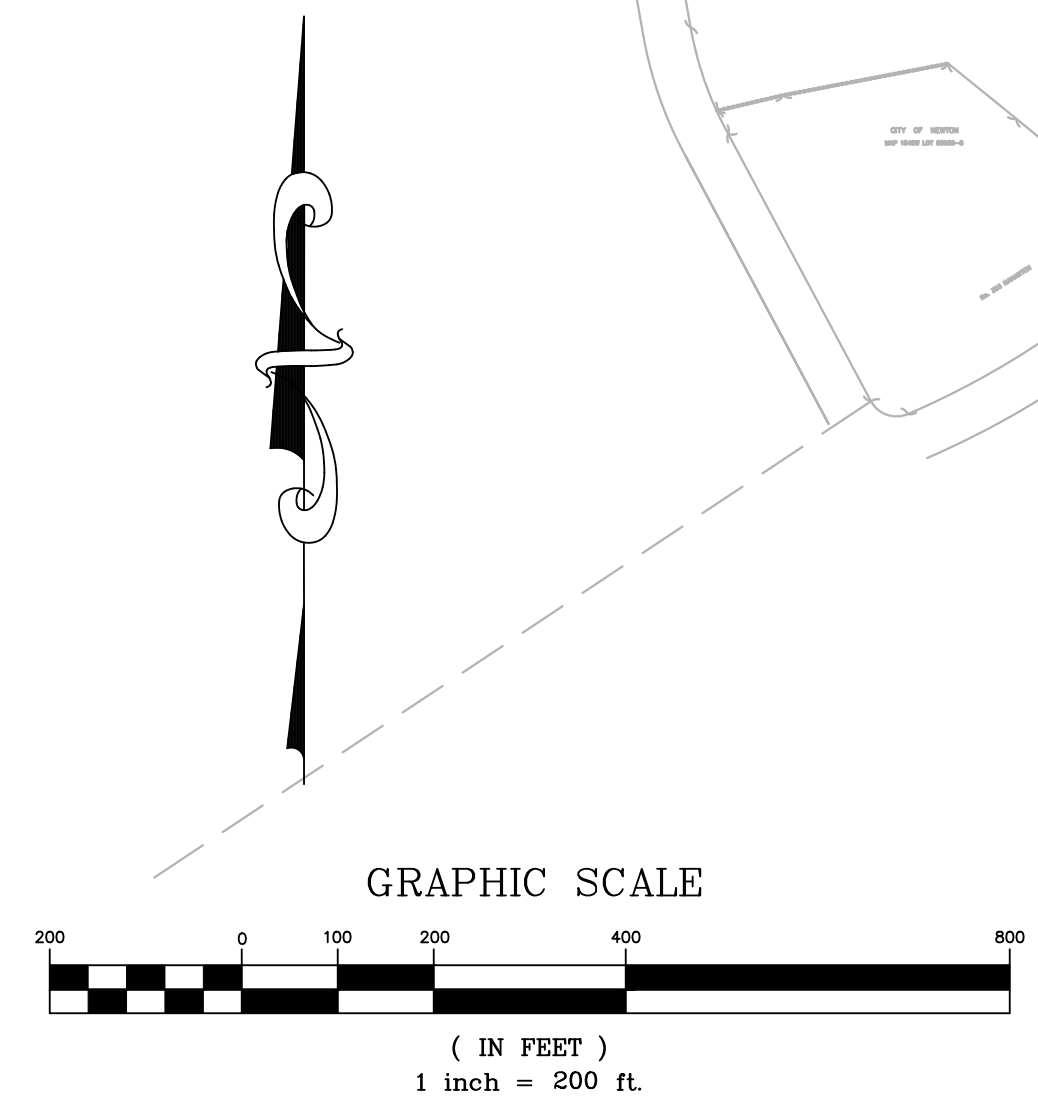


GENERAL NOTES

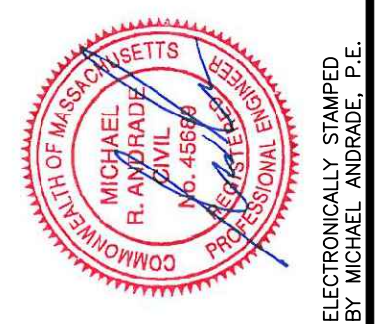
1. THIS PLAN WAS PREPARED WITHOUT THE BENEFIT OF A TITLE REPORT AND IS SUBJECT TO ANY FINDINGS SUCH A REPORT MIGHT DISCLOSE.
2. LOCATION OF ALL UNDERGROUND UTILITIES SHOWN HEREON ARE APPROXIMATE AND ARE BASED ON THE FIELD LOCATION OF VISIBLE STRUCTURES SUCH AS CATCH BASINS, MANHOLES, WATER GATES, ETC. AND COMPILED INFORMATION FROM PLANS SUPPLIED BY VARIOUS UTILITY COMPANIES AND GOVERNMENT AGENCIES. IN ACCORDANCE WITH CHAPTER 82 SECTION 40 INCLUDING AMENDMENTS, ALL CONTRACTORS SHOULD NOTIFY IN WRITING ALL UTILITY COMPANIES AND GOVERNMENT AGENCIES PRIOR TO ANY EXCAVATION WORK AND CALL DIG-SAFE AT 811. THE CITY OF NEWTON SHALL ALSO BE CONTACTED FOR UTILITY MARKOUTS, AS AVAILABLE.
3. PROPERTY LINES, TOPOGRAPHIC FEATURES, AND UTILITIES SHOWN ON THESE PLANS ARE COMPILED FROM PREVIOUS PLANS BY OTHERS SUPPLEMENTED IN AREAS BY INSTRUMENT SURVEY BY GRAVES ENGINEERING, INC. IN OCTOBER 2017.
4. THE VERTICAL DATUM FOR THIS SURVEY IS BASED ON NAVD88, HORIZONTAL COORDINATE SYSTEM IS MASSACHUSETTS STATE PLANE COORDINATE SYSTEM.
5. ECOLOGICAL RESOURCES SHOWN ARE AS IDENTIFIED PREVIOUSLY ON THE AFOREMENTIONED COMPILED PLANS SUPPLEMENTED WITH NEW FLAGS IN AREAS BY ECOTEC, INC. (SEPTEMBER 2017).

PROJECT NOTES

1. THESE PLANS SHOW THE GENERAL INTENT OF THE POND NUISANCE VEGETATION MANAGEMENT.

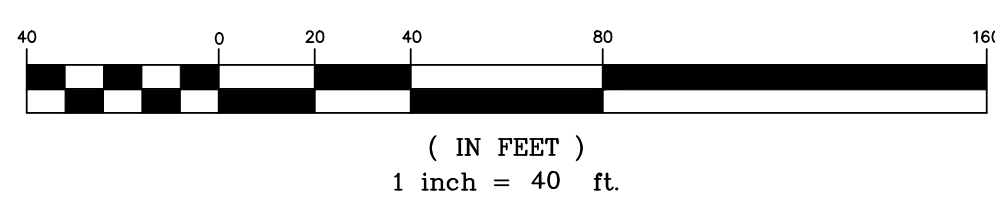


NO.	DATE	BY	DESCRIPTION
1	11/08/22	MRA	ISSUED FOR NOTICE OF INTENT



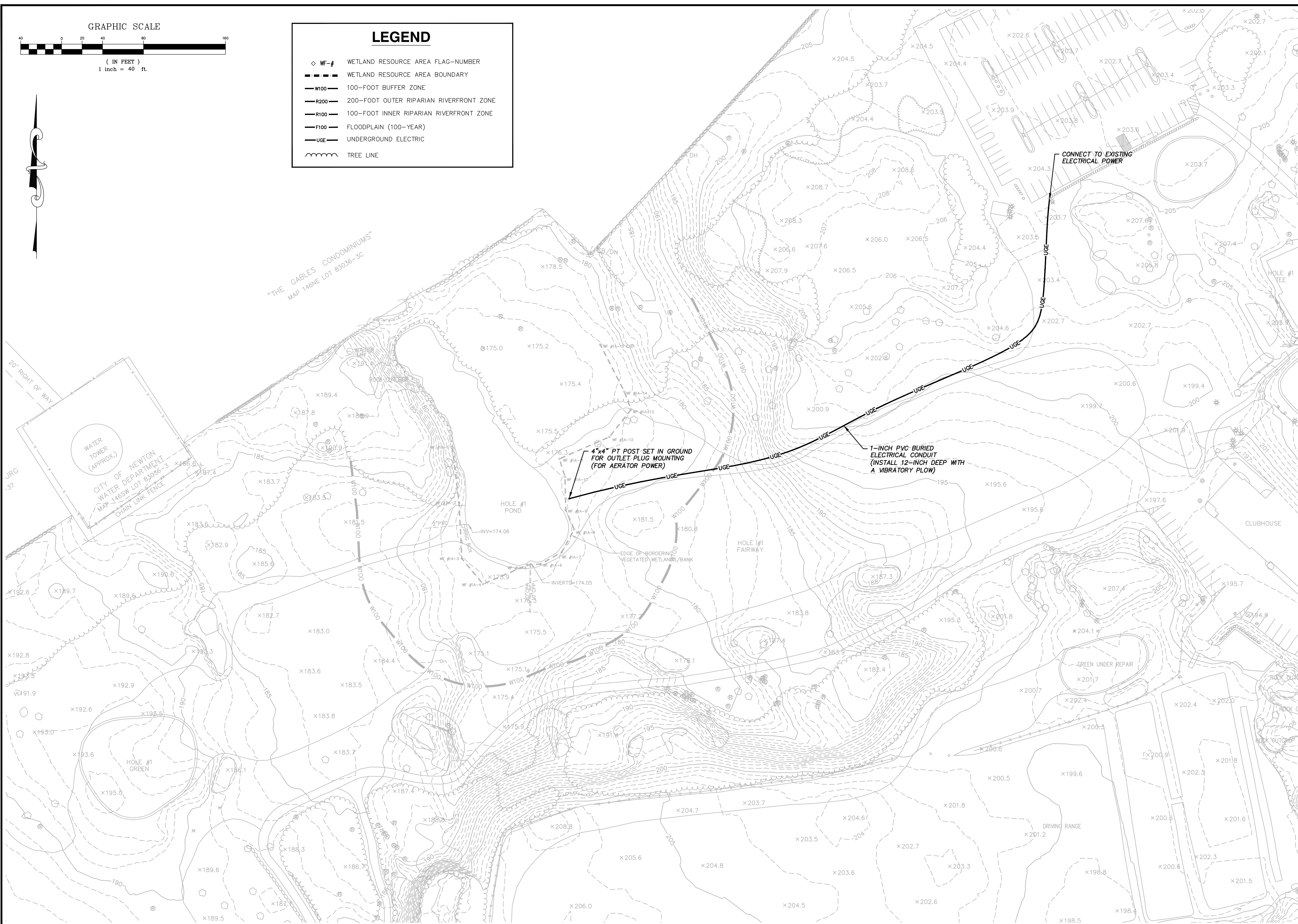
INDEX SHEET
NUISANCE VEGETATION MANAGEMENT
CHARLES RIVER COUNTRY CLUB
 PREPARED FOR: CHARLES RIVER COUNTRY CLUB
 483 DEDHAM STREET, NEWTON, MA 02469
 DATE: 11/08/22 SCALE: 1" = 200'
 DES. BY: MRA DRW. BY: MRA CHK. BY: MRA PRJ. NO.: 22151

GRAPHIC SCALE



LEGEND

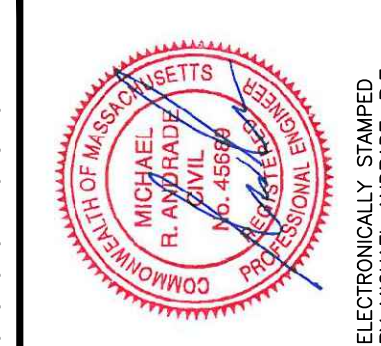
- ◇ WF-# WETLAND RESOURCE AREA FLAG-NUMBER
- WETLAND RESOURCE AREA BOUNDARY
- W100 100-FOOT BUFFER ZONE
- R200 200-FOOT OUTER RIPARIAN RIVERFRONT ZONE
- R100 100-FOOT INNER RIPARIAN RIVERFRONT ZONE
- F100 FLOODPLAIN (100-YEAR)
- UGE UNDERGROUND ELECTRIC
- TREE LINE



GRAVES
ENGINEERING, Inc.

100 GROVE STREET | WORCESTER MA 01605
T 508-856-0321 | F 508-856-0357
gravesengineering.com

NO.	DATE	BY	DESCRIPTION	REVISIONS
1	11/08/22	MRA	ISSUED FOR NOTICE OF INTENT	



PREPARED FOR:	CHARLES RIVER COUNTRY CLUB	PRJ. NO.:	22151
DATE:	11/08/22	CHK. BY:	MRA
SCALE:	1"=40'	DRW. BY:	MRA
		DES. BY:	MRA
		483 DEDHMA STREET, NEWTON, MA 02469	

SITE PLAN - HOLE #1
NUISANCE VEGETATION MANAGEMENT
CHARLES RIVER COUNTRY CLUB

GRAPHIC SCALE



(IN FEET)
1 inch = 40 ft.

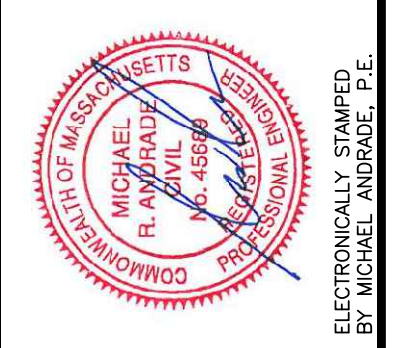
LEGEND

- WF-# WETLAND RESOURCE AREA FLAG-NUMBER
- WETLAND RESOURCE AREA BOUNDARY
- W100 100-FOOT BUFFER ZONE
- R200 200-FOOT OUTER RIPARIAN RIVERFRONT ZONE
- R100 100-FOOT INNER RIPARIAN RIVERFRONT ZONE
- F100 FLOODPLAIN (100-YEAR)
- UGE UNDERGROUND ELECTRIC
- TREE LINE



GRAVES ENGINEERING, Inc.
 100 GROVE STREET | WORCESTER MA 01605
 T 508-846-0324 | F 508-846-0357
 gravesengineering.com

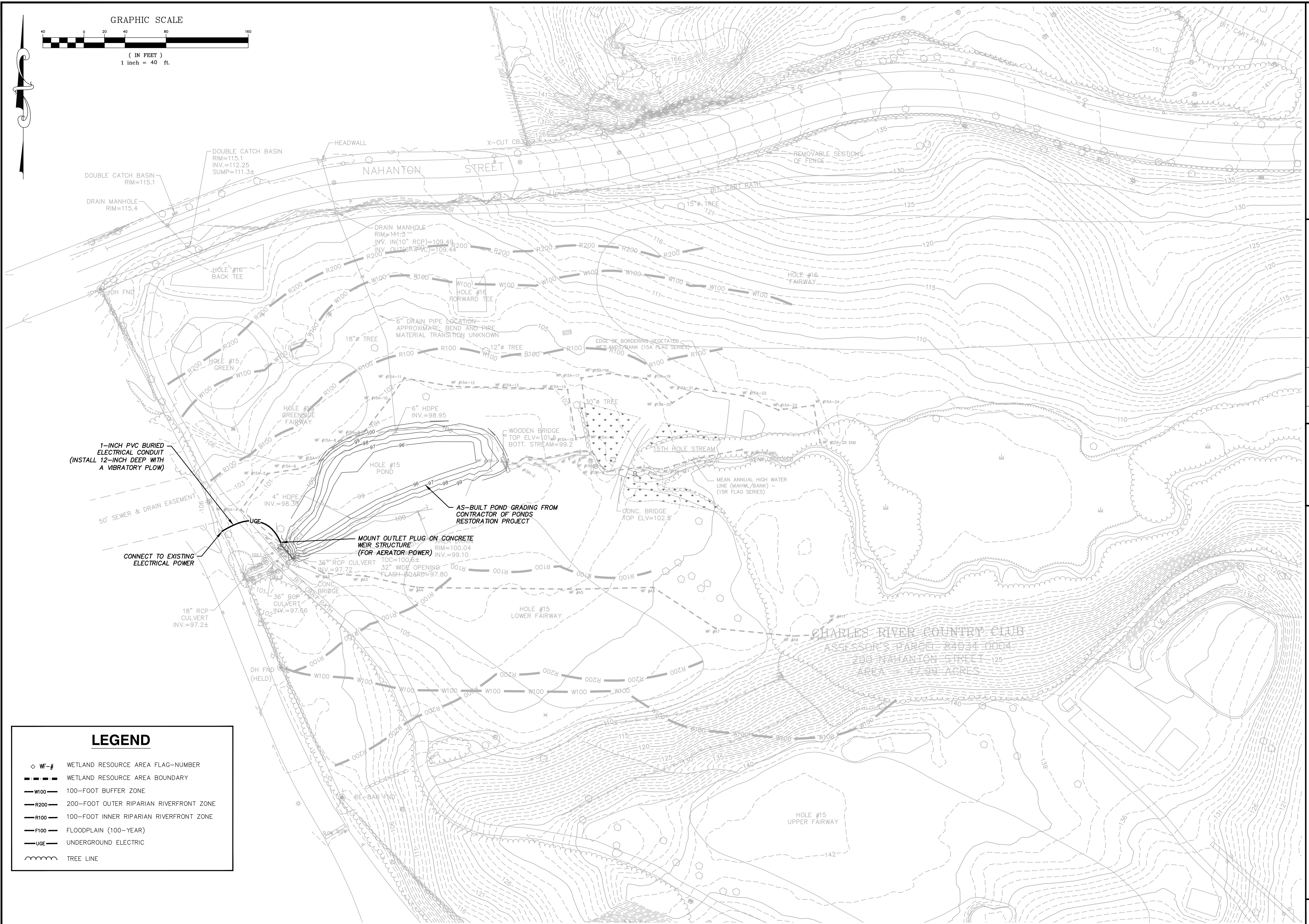
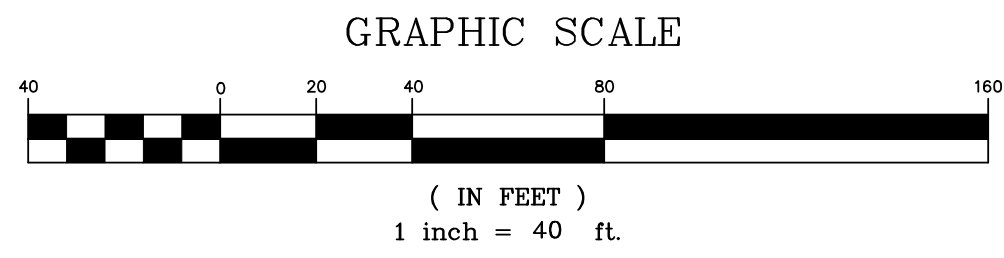
NO.	DATE	BY	DESCRIPTION
1	11/08/22	MRA	ISSUED FOR NOTICE OF INTENT



SITE PLAN - HOLE #4		PRJ. NO.:	22151
NUISANCE VEGETATION MANAGEMENT		CHK. BY:	MRA
CHARLES RIVER COUNTRY CLUB		DRW. BY:	MRA
PREPARED FOR:	CHARLES RIVER COUNTRY CLUB	DES. BY:	MRA
	483 DEHMA STREET, NEWTON, MA 02459	SCALE:	1"=40'
DATE:	11/08/22		

C103

CITY OF NEWTON RECREATION DEPARTMENT
MAP 145SW LOT 83035-3



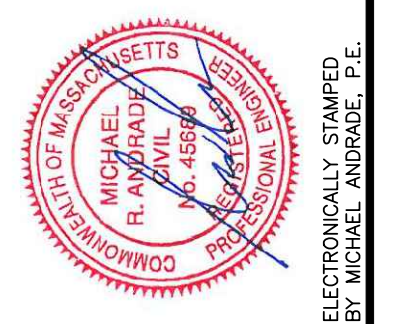
LEGEND

- ◇ WF-# WETLAND RESOURCE AREA FLAG-NUMBER
- WETLAND RESOURCE AREA BOUNDARY
- W100 100-FOOT BUFFER ZONE
- R200 200-FOOT OUTER RIPARIAN RIVERFRONT ZONE
- R100 100-FOOT INNER RIPARIAN RIVERFRONT ZONE
- F100 FLOODPLAIN (100-YEAR)
- UGE UNDERGROUND ELECTRIC
- TREE LINE

GRAVES
ENGINEERING, Inc.

100 GROVE STREET | WORCESTER MA 01605
T 508-856-0321 | F 508-856-0357
gravesengineering.com

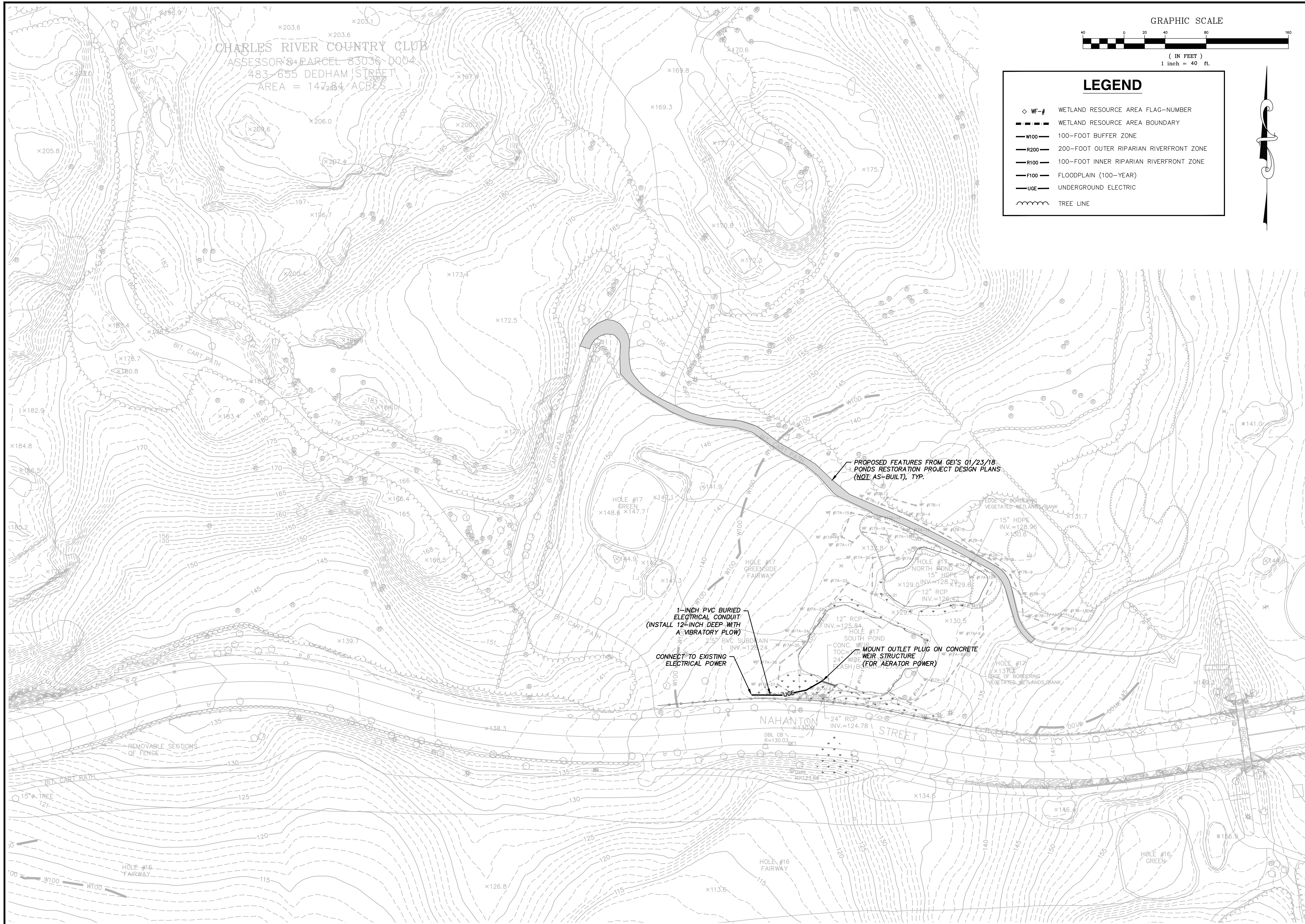
NO.	DATE	BY	DESCRIPTION
1	11/08/22	MRA	ISSUED FOR NOTICE OF INTENT



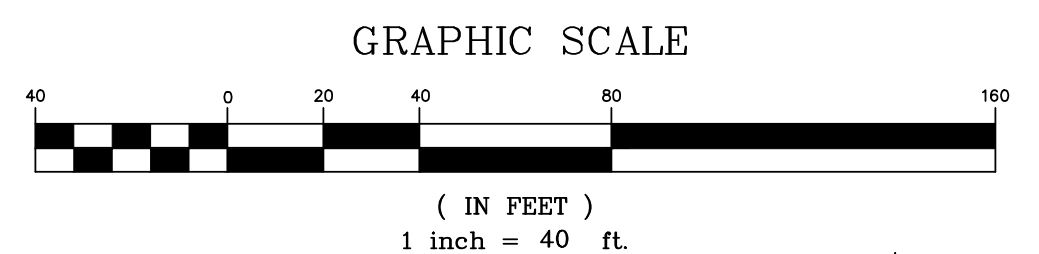
PREPARED FOR:	CHARLES RIVER COUNTRY CLUB 483 DEDHAM STREET, NEWTON, MA 02459
DATE:	11/08/22
SCALE:	1"=40'
DES. BY:	MRA
DRW. BY:	MRA
CHK. BY:	MRA
PRJ. NO.:	22151

SITE PLAN - HOLE #15
NUISANCE VEGETATION MANAGEMENT
CHARLES RIVER COUNTRY CLUB

C104



CHARLES RIVER COUNTRY CLUB
 ASSESSOR'S PARCEL 83036 0004
 483-655 DEDHAM STREET
 AREA = 147.84 ACRES

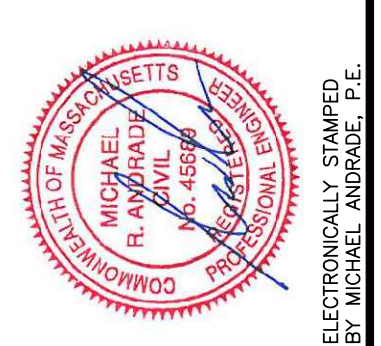


LEGEND

- ◇ WF-# WETLAND RESOURCE AREA FLAG-NUMBER
- WETLAND RESOURCE AREA BOUNDARY
- W100 100-FOOT BUFFER ZONE
- R200 200-FOOT OUTER RIPARIAN RIVERFRONT ZONE
- R100 100-FOOT INNER RIPARIAN RIVERFRONT ZONE
- F100 FLOODPLAIN (100-YEAR)
- UGE UNDERGROUND ELECTRIC
- ~ TREE LINE

GRAVES
 ENGINEERING, Inc.
 100 GROVE STREET | WORCESTER MA 01605
 T 508-856-0321 | F 508-856-0357
 gravesengineering.com

NO.	DATE	BY	DESCRIPTION
1	11/08/22	MRA	ISSUED FOR NOTICE OF INTENT



PREPARED FOR:	CHARLES RIVER COUNTRY CLUB
DATE:	11/08/22
SCALE:	1"=40'
DES. BY:	MRA
DRW. BY:	MRA
CHK. BY:	MRA
PRJ. NO.:	22151

**SITE PLAN - HOLE #17
 NUISANCE VEGETATION MANAGEMENT
 CHARLES RIVER COUNTRY CLUB**

C105