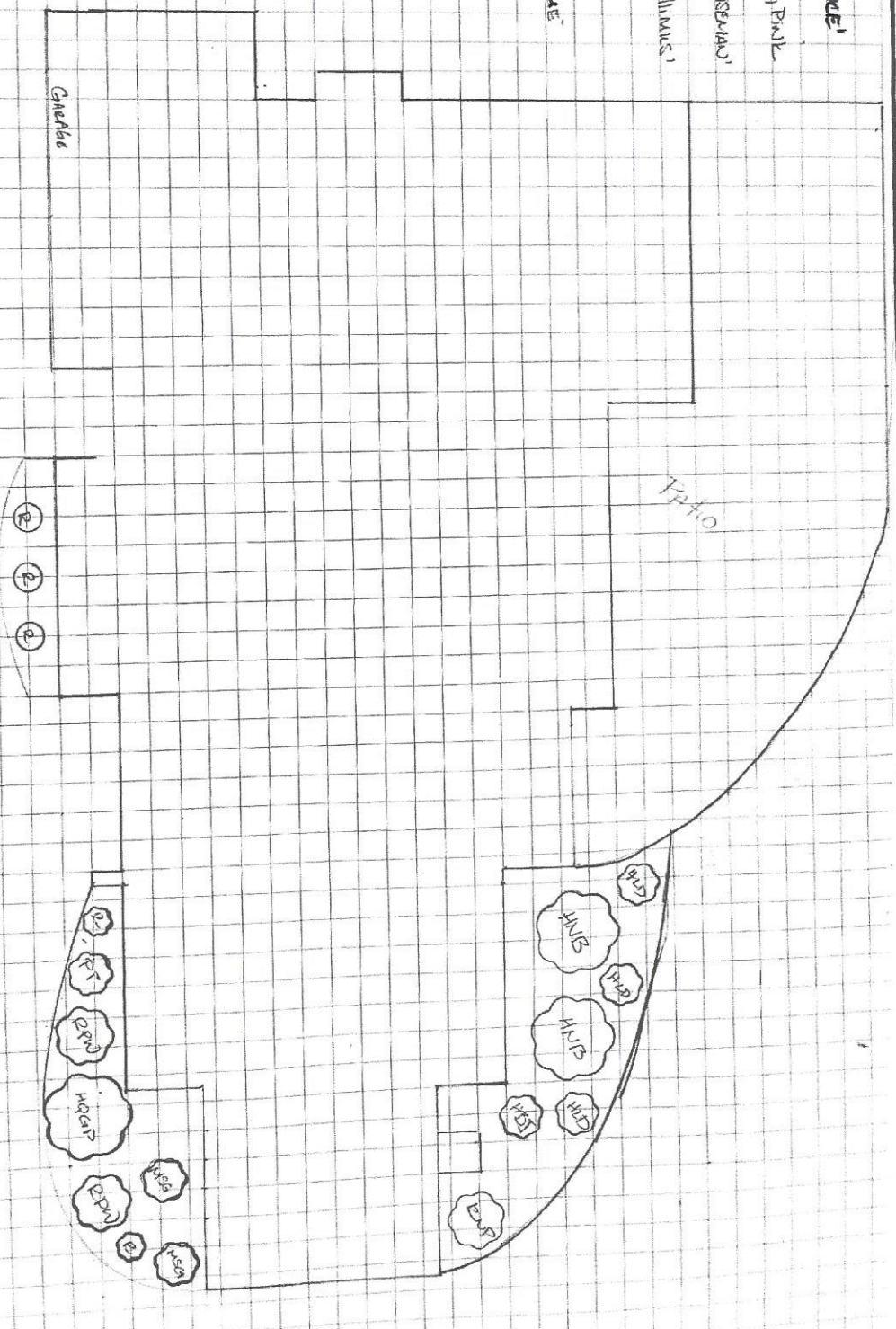


Foundation Plantings

- R) RHODODENDRON YAKU 'PRINCE'
- H 069) HYDRANGEA QUERCIFOLIA 'SAISAN PINK'
- R) RHODODENDRON YAKU 'PEARL KINGSMAN'
- MSB) MISCANTHUS SINENSIS 'GORGILLIUMS'
- PP) PASTINACA OPUL 'PAUTHER'
- YNSB) HYDRANGEA 'NANTUCKET ELEGANT'
- HLD) HYDRANGEA 'LEIS DAVOS DAWN'
- HRS) HYDRANGEA 'LEIS DAVOS 'RILIE JANZIES'

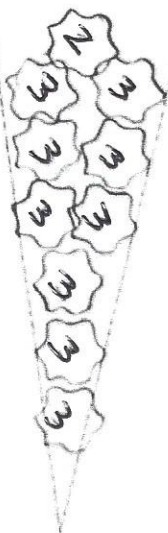
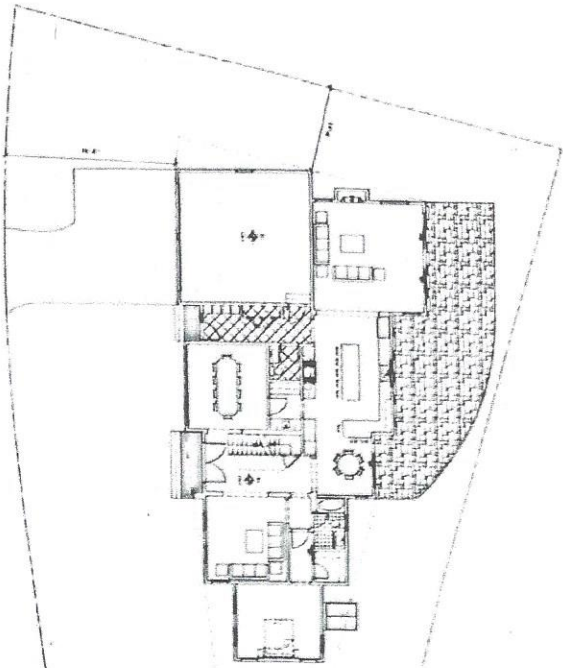


Project Mendell Phillips
 SO GARDEN LTD
 11111 1111

Date 2/8/2023
 Scale 1/4" = 1'
 Designer Alan Skopman

Restoration Plantings

GRACE ROAD



3 = ACER Rubra 3-3.5"
 October color
 2 = MAIUS PRAIRIE FIRE 2-2.5"
 11

New Residence

50
 Grace Road
 Newton, MA

architects
mckay

10 Stuart Street
 Boston, MA 02109
 Tel: 617.552.8200
 www.mckayarchitects.com



Site Plan

L-111

DATE	BY
REVISION	BY
DATE	BY
DATE	BY