

Newton Parks, Recreation & Culture Department

# Comprehensive Improvements & Maintenance

## Plan Update

Programs & Services Committee

February 16<sup>th</sup>, 2023

[athleticfields@newtonma.gov](mailto:athleticfields@newtonma.gov)

# AGENDA

- INTRODUCTION
- LISTENING TO ATHLETIC NEEDS
- MAINTAINING OUR GRASS FIELDS
- EXPANDING PLAY
- SYNTHETIC TURF



# Newton Athletic Fields Foundation

PETITION: 12/12/2020

Newton needs a multi-year athletic fields improvement program to:

- ✓ Rehabilitate fields in disrepair
- Construct synthetic turf fields
- ✓ Increase maintenance to support usage levels
- ✓ Configure and allocate fields based on demand (not history)
- ✓ Install additional field lighting

We seek a formal commitment from the Mayor's office, City Council and Parks, Recreation & Culture (PR&C) department to:

---

- ✓ Allocate capital and operating funds
- ✓ Commit to a multi-year plan (dates, deliverables, budget, resources)
- ✓ Charge market-rate rental fees and direct them to field maintenance
- ✓ Commit Community Preservation Act (CPA) funds annually
- ✓ Dedicate the required resources to both deliver improvements and maintain existing fields

# Fields Committee

A subcommittee of the Parks and Recreation Commission

Discussing the needs of athletic field user groups

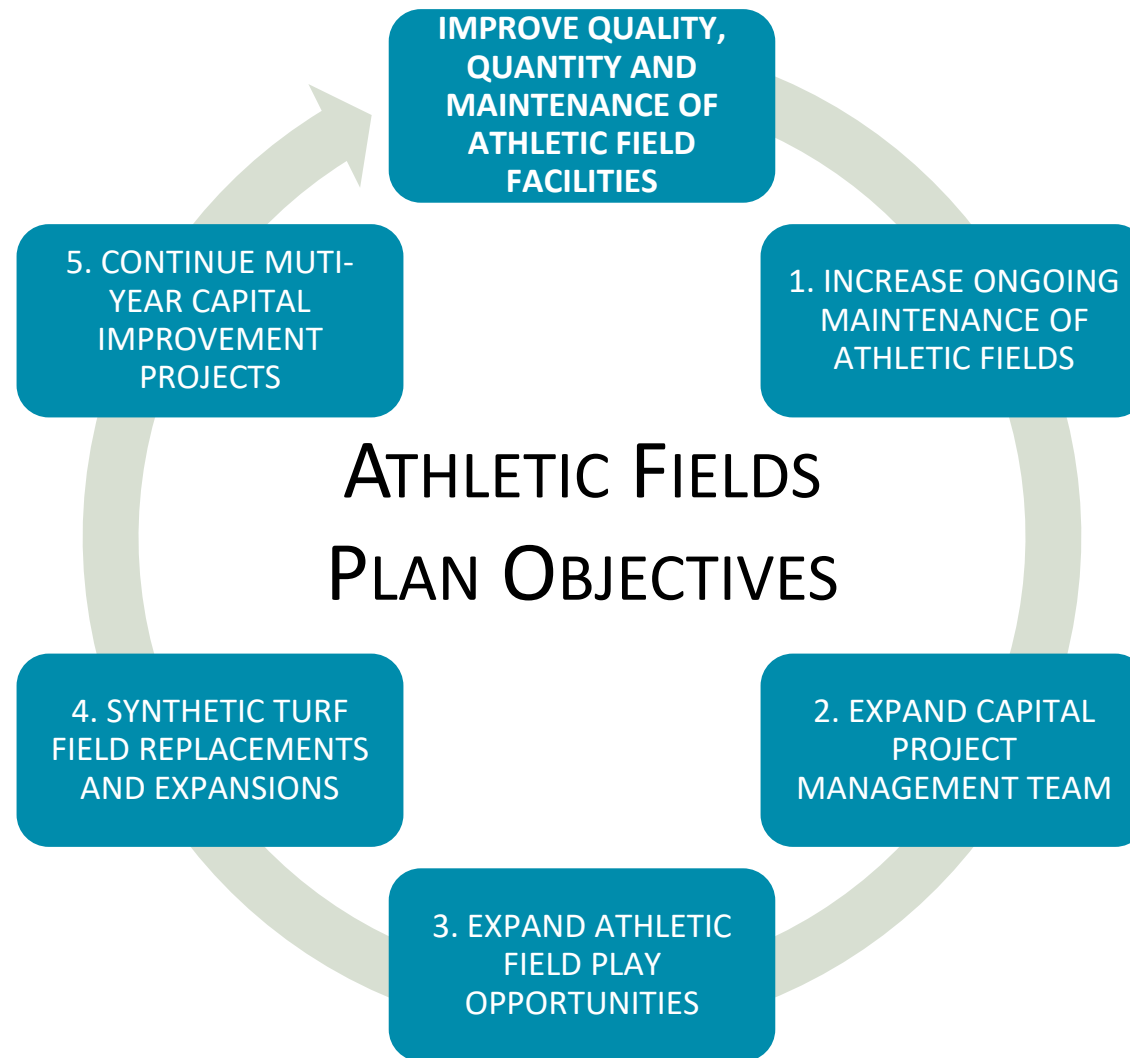
## Key findings

- Athletic field conditions: implement strategies to improve our grass fields
- Field availability:
  1. Add fields to increase availability
  2. Potential to convert grass fields to turf
  3. Explore ways to increase evening play availability due to school dismissal time change

# Newton HS Dismissal Time Change

	<b>2019</b>	<b>2021</b>
Athlete dismissal time	1:55-2:45	2:30-3:45
Typical game start & end times	4:00-6:30	4:30-7:00
Middle school early release days/times also adjusted in '21-'22		

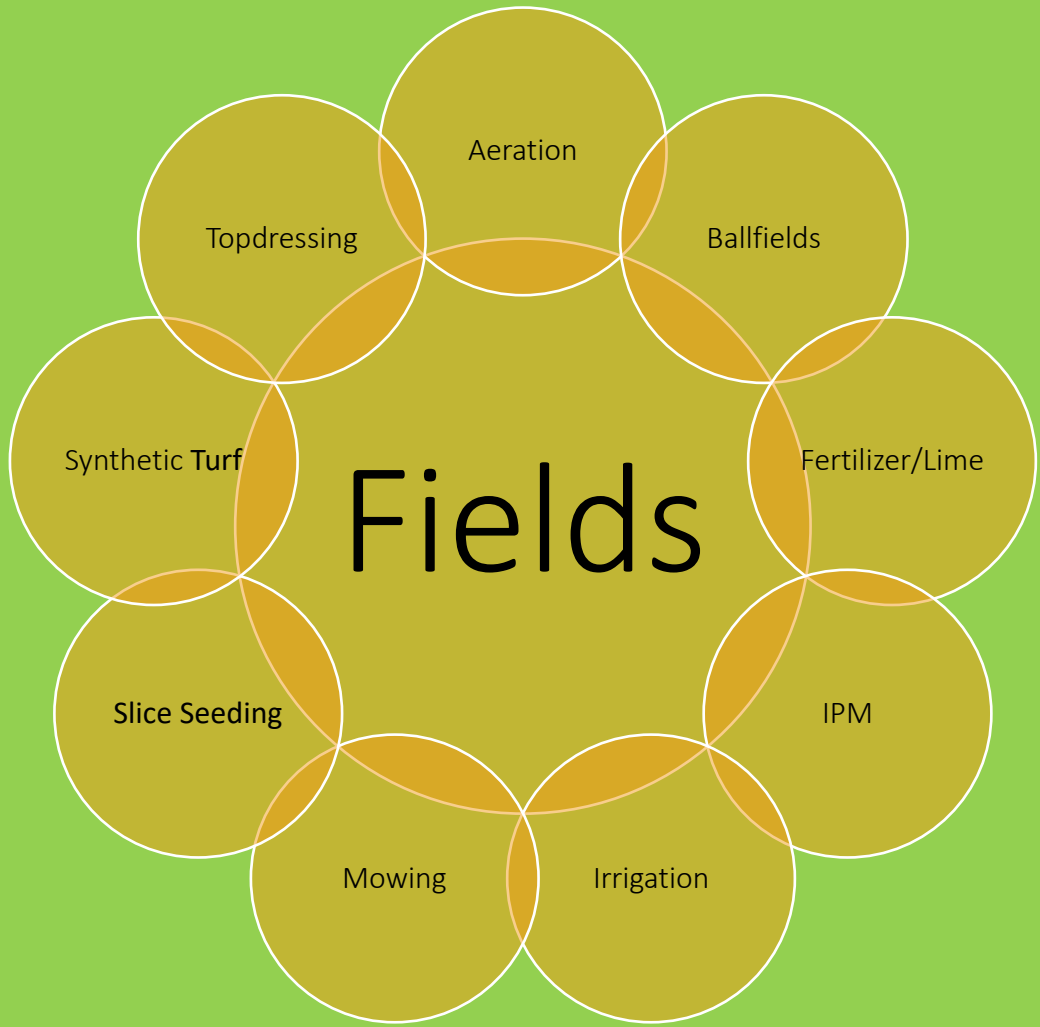
# Improving Quality, Quantity + Maintenance of Athletic Fields



Newton Parks, Recreation and Culture Department

**Athletic Fields Capital Improvement Plan Goals & Objectives**

# MAINTAINING OUR GRASS FIELDS





# PRC Maintenance

- ▶ We manage seven mowing contracts with 167 different locations
- ▶ We oversee all grounds including athletic fields, grass, meadows, cemeteries and traffic islands



# Turf management at irrigated fields

- ▶ Cultural
  - ▶ Aeration
  - ▶ Slice seeding/sodding
  - ▶ Fertilizer/Lime
  - ▶ Topdressing
- ▶ Mechanical
  - ▶ Mowing
  - ▶ Dethatching
- ▶ IPM
  - ▶ Herbicides
- ▶ Contractors/Consultants
  - ▶ North Turf
  - ▶ Tom Irwin Advisors



# Athletic Grass Turf Management

fy	locations maintained per fy	acres maintained per fy	operating budget per fy
fy19	8	22	\$ 35,000
fy20	13	30	\$ 75,000
fy21	14	40	\$ 75,000
fy22	16	54	\$ 250,000
fy23	18	69	\$ 300,000
% increase	125%	218%	757%

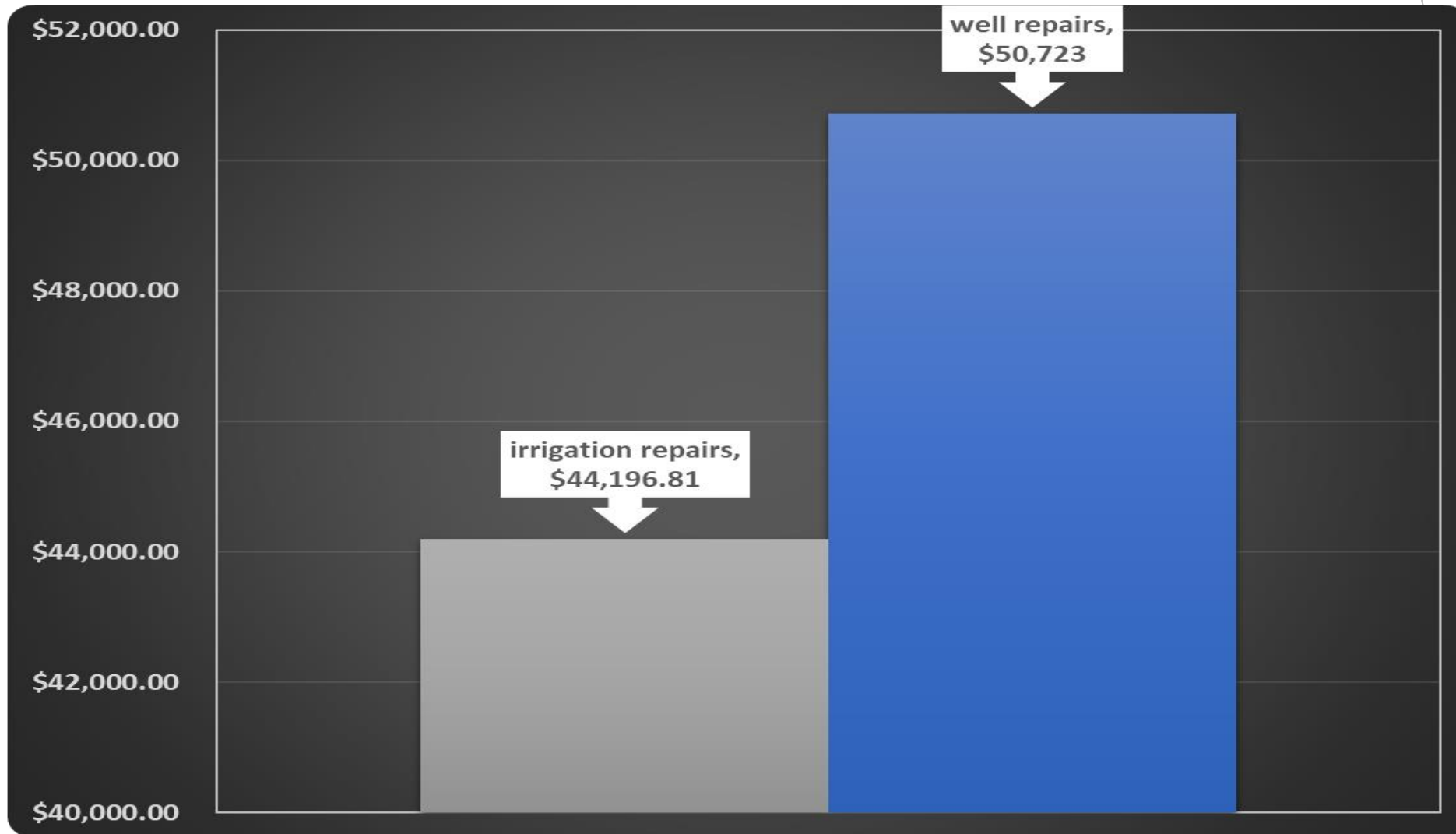
# Athletic Grass Turf Management

	timeline 3 3 months	Feb-19	Jan-00	Mar-21	Aug-21	Mar-22	Oct-22
perennial ryegrass	price per pound	\$ 1.17	\$ 1.87	\$ 1.48	\$ 2.60	\$ 2.84	\$ 3.18
	price per 50 pound bag	\$ 58.50	\$ 93.50	\$ 74	\$ 130	\$ 142	\$ 159
	price per acre	\$ 292.50	\$ 467.50	\$ 370	\$ 650	\$ 710	\$ 795
	% increase	172%					

# Athletic Grass Turf Management

<b>fy</b>	<b>aerifying</b>	<b>slice seeding</b>	<b>fertilizing</b>	<b>topdressing</b>
<b>fy21</b>	<b>\$ 200</b>	<b>\$ 395</b>	<b>\$ 195</b>	<b>\$ 850</b>
<b>fy22</b>	<b>\$ 200</b>	<b>\$ 675</b>	<b>\$ 295</b>	<b>\$ 850</b>
<b>fy23</b>	<b>\$ 200</b>	<b>\$ 1,000</b>	<b>\$ 250</b>	<b>\$ 900</b>
<b>% increase</b>	<b>43%</b>			

# Irrigation and Well Repairs



Before...



# Case Study: Lower Falls

- Fertilizer
- Dethatch
- Slice Seed
- Irrigate





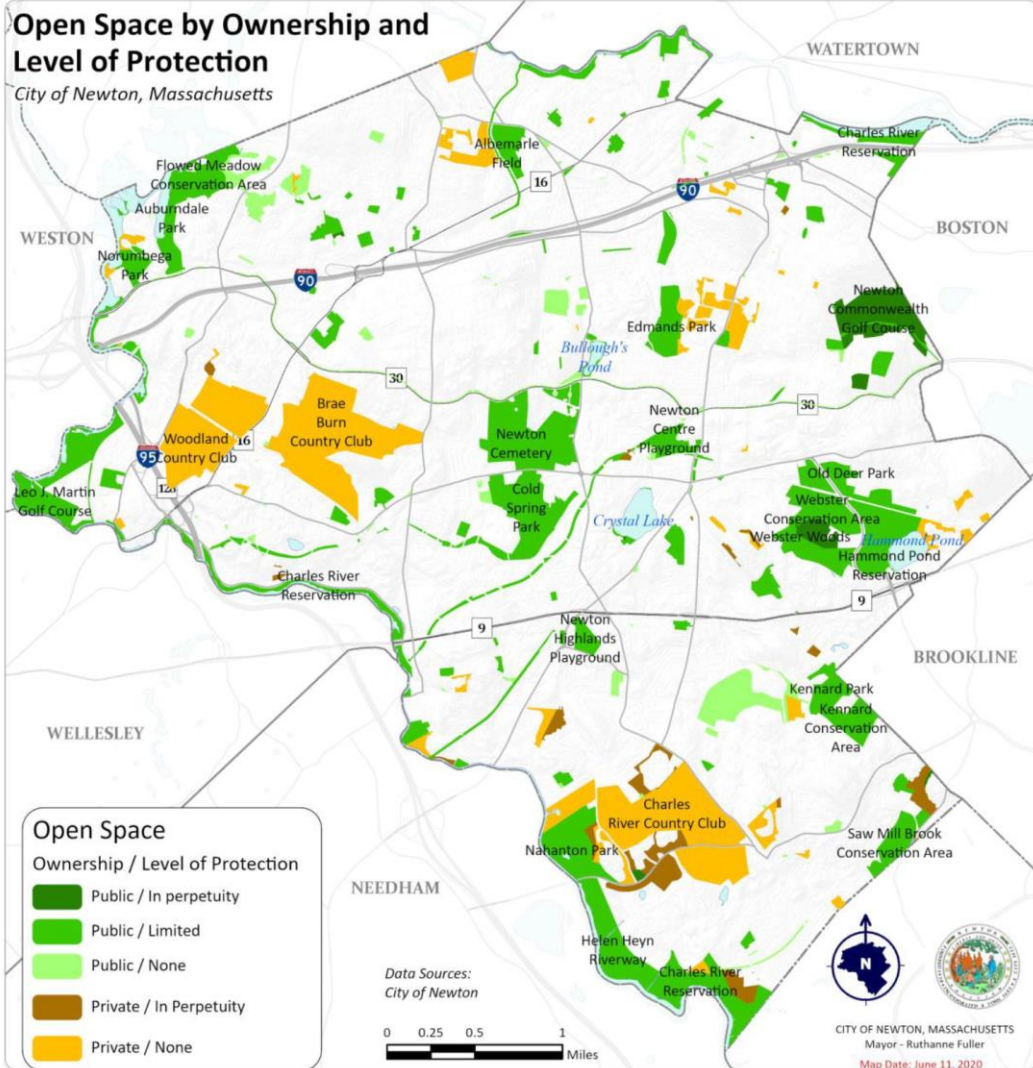
Before



After

2022 IPM Results  
Newton North High School

# Inventory of Open Space in Newton

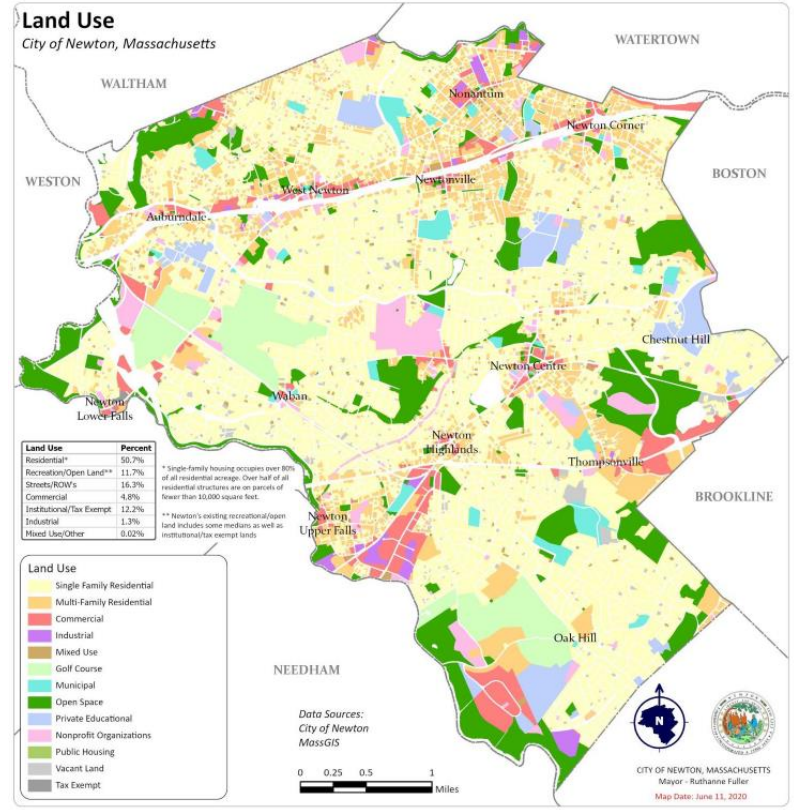
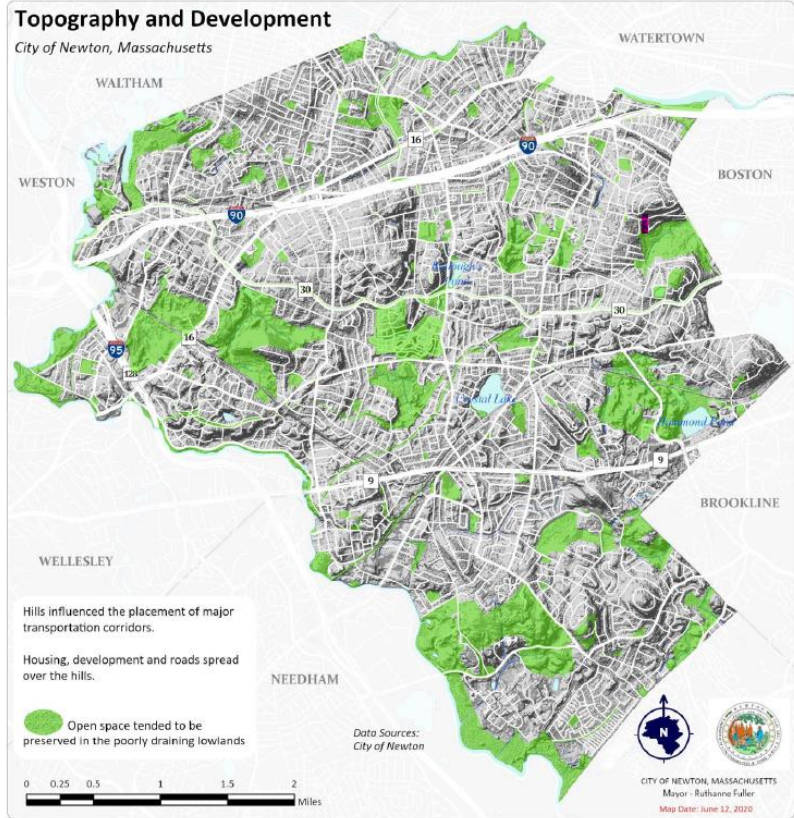
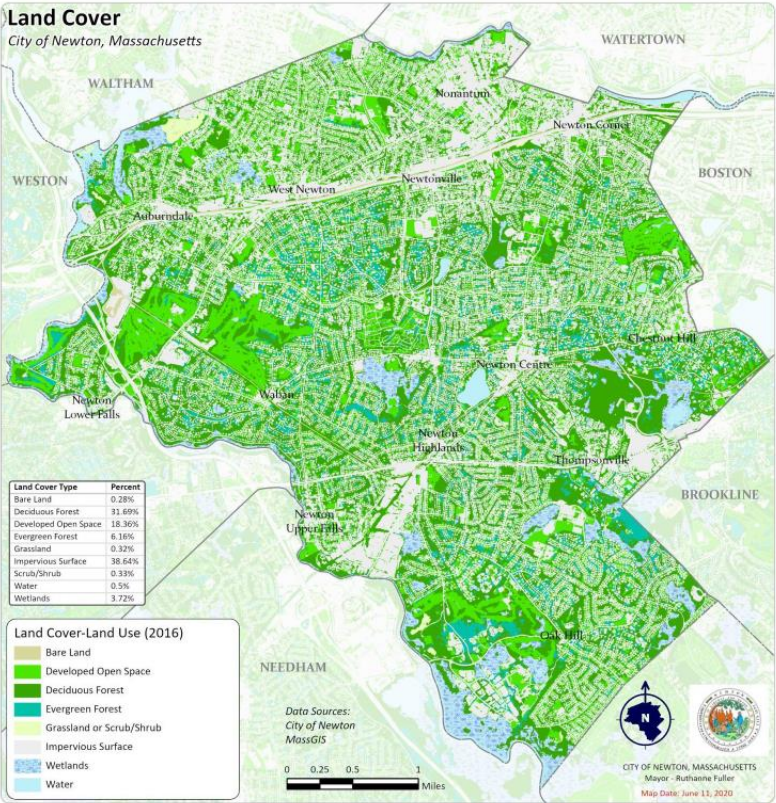


Category	Area in Acres	% of Total Open Space
<b>Publicly Owned Open Space - Subtotal</b>	<b>1,556.96</b>	<b>62.2 %</b>
Newton Parks, Recreation & Culture (Table 3)	558.6	22.4 %
Newton Parks, Recreation & Culture – Medians (Table 3)	7.34	0.03 %
Newton Conservation Commission (Table 4)	310.79	12.4 %
Newton School Department (Table 5)	200.33	8.0 %
General Municipal Control (Table 6)	71.63	2.9 %
Cochituate Aqueduct (Table 7)	41.21	1.6 %
Sudbury Aqueduct (Table 8)	20.65	0.9 %
Massachusetts Department of Conservation and Recreation (Table 9)	338.76	13.5 %
Other Municipal, State, and Federal Land (Table 10)	7.80	0.4 %
<b>Privately Owned Open Space - Subtotal</b>	<b>944.86</b>	<b>37.8%</b>
Golf Courses (Table 11)	542.69	21.8 %
Cemeteries (Table 12)	118.62	4.7 %
Tax Exempt Land w/ Significant Open Space (Table 13)	205.12	8.2 %
Private Land w/ Significant Open Space (Table 14)	78.43	3.2 %
<b>TOTAL</b>	<b>2501.82</b>	<b>100 %</b>

\*\* Maps and data illustrated over the next few slides were taken from the 2020-2027 Open Space and Recreation Plan

\*\* Please refer to the [City of Newton Open Space and Recreation Plan](#) for tables referenced above





# City-Wide Open Space Analysis

- 62% of all Open Space is Public
- Predominantly residential
- Fully built out
- Public open space parcels inherently irregular
- Open space predominantly sloped
- Open space is landlocked with limited opportunities for horizontal expansion
- Approx 38% of Newton Covered by tree canopy
- Tree canopy is essential to the character and ecological health of the city
- Public open space is host to a large percentage of the city's contiguous forests

# City-Wide Inventory Analysis

<b>General Composition of Public Open Space</b>	
Total acreage of public open space (Park, School, Conservation and other lands)	<b>1556.96</b>
Total acreage of public open space with ath. fields	<b>476.62</b>
Percentage of public open space with athletic fields	<b>31%</b>
Total acreage of public open space avail. for athletic fields	<b>118.94</b>
Percentage of all public open space allocated to athletic fields	<b>8%</b>

<b>Athletic Field and Other Recreational Amenities</b>	
Percentage of park and school lands allocated to athletic fields	<b>25%</b>
*Percentage for other amenities and uses	<b>75%</b>

\*Other amenities include: buildings, wooded areas, courts, pathways, trails, topography, play grounds and other passive and active areas

Newton Parks, Recreation and Culture Department

**Athletic Fields Capital Improvement Plan Analysis**

# Analysis of Athletic Field Participants

<b>Analysis of Club and School athletics</b>		
<b>Approx. Number of Club Sports Participants</b>	<b>Approx. Total Number of HS Athletes (NSHS)</b>	<b>Approx. Number of HS Athletes (NNHS)</b>
<b>8527</b>	<b>655</b>	<b>636</b>
<b>Approximate athletic field participant growth 2021 to 2022</b>		<b>64%</b>
<b>Percentage of Participants in MP Sports</b>		<b>77%</b>

## Key Findings:

- Youth Athletics (K-12) make up approximately 11% of Newton's overall population
- Athletic field participation and needs are growing dramatically

Newton Parks, Recreation and Culture Department

**Athletic Fields Capital Improvement Plan Analysis**

# Analysis of Permitted Land for Athletic Fields

<b>Analysis of Lands Permitted for Athletic Fields</b>	
Total field areas permitted	<b>133</b>
Percentage of lands permitted to ball diamonds	<b>44%</b>
Percentage of lands permitted to rectangular multipurpose fields	<b>56%</b>

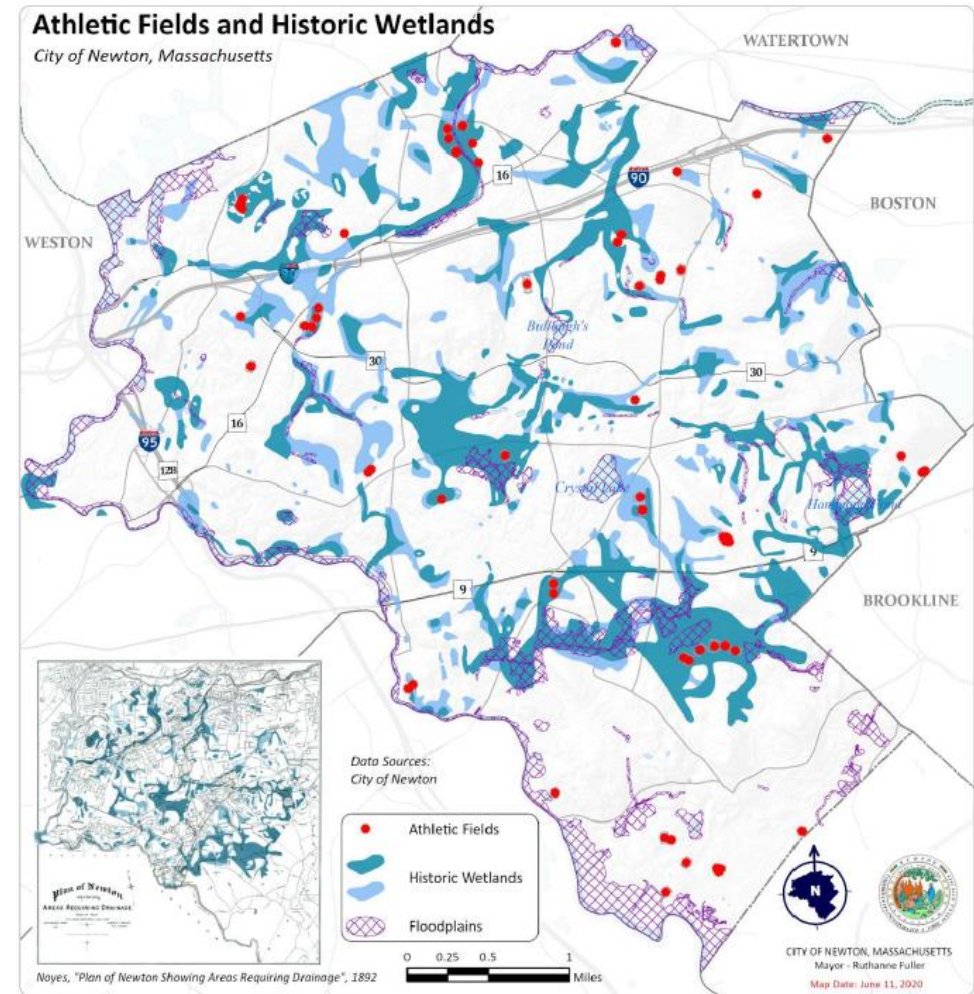
<b>Permitted Hours per Field Type</b>	
<b>TOTAL PERMITTED FIELD HOURS (2021)</b>	<b>31,537.00</b>
<b>TOTAL PERMITTED RECTANGULAR FIELD HOURS (2021)</b>	<b>26,466.50</b>

Newton Parks, Recreation and Culture Department

**Athletic Fields Capital Improvement Plan Analysis**

# City of Newton Athletic Fields Analysis Recap

- Compact and irregular open space parcels
- Dynamic topography
- Significant tree canopy within public open space parcels
- Public lands with athletic fields make up 31% of all open space
- Out of the 31%, 8% of land is dedicated to athletic fields
- Majority of athletic fields were constructed in low-lying, poor draining areas
- Majority of fields permitted for multipurpose sports
- Field sports participation is increasing rapidly
- Majority of sports participants rely on multipurpose fields



Newton Parks, Recreation and Culture Department

**Athletic Fields Capital Improvement Plan Analysis**

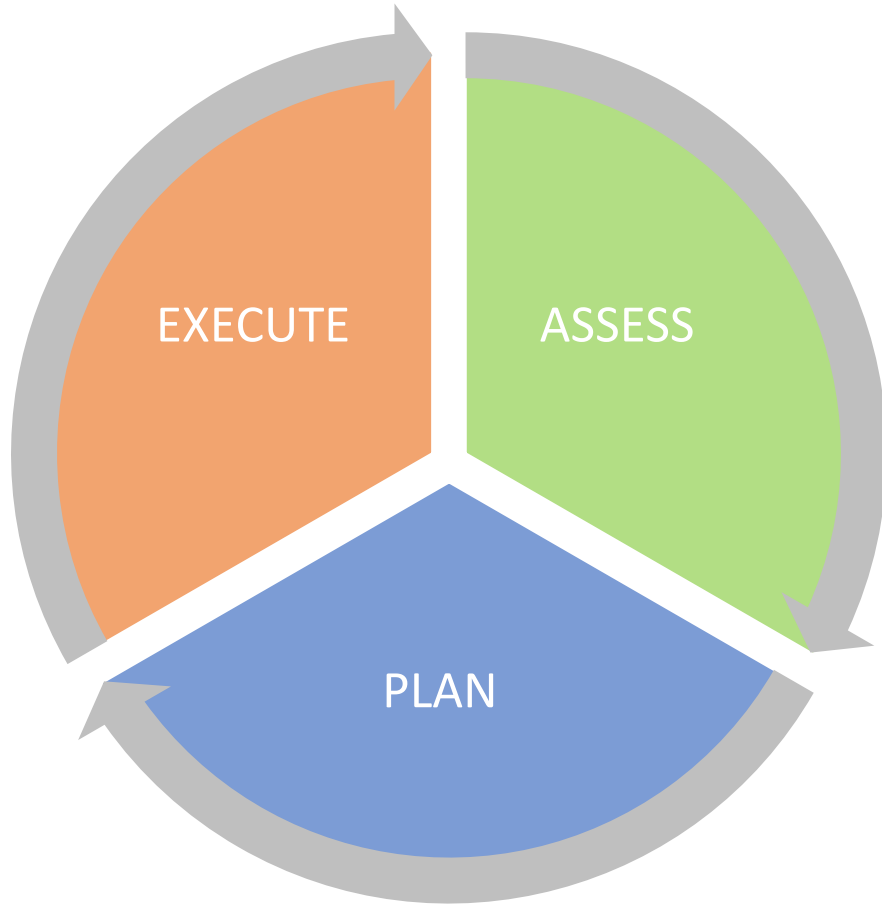
# City of Newton Athletic Fields Analysis Conclusions

- Both field types are important to Newton athletics
- High demand fields are driven by quality of play surface, irrigation, and access to parking
- Prioritize projects to better meet the needs of MP sports
- Examine and identify opportunities to increase MP field usage at existing facilities with lower demand
- Strategically reduce the # of underutilized ball fields
- Find a “vertical” approach to expanding MP field offerings, Sprawling is not feasible in fully built out Eastern MA

Newton Parks, Recreation and Culture Department

**Athletic Fields Capital Improvement Plan Analysis**

# 5-Year Capital Plan Implementation Strategy



## Overarching Approach to 5-Year Plan

- ✓ Assess and review current city-wide plans (OSRP + CIP)
- ✓ Develop initial 5-year athletic field capital plan
- ✓ Secure funding for initial 5-year project design
- ✓ Procure and hire consulting team/s to assist with project plans
- ✓ Evaluate and revise field permit fee structure
- ✓ Increase athletic field maintenance
- ✓ Develop community outreach processes
- ✓ Establish a recurring plan cycle
- ✓ Secure construction funds for priority field projects from the CPA and other sources

# Project Prioritization Criteria

- ALIGNS WITH OPEN SPACE & RECREATION PLAN GOALS/  
OBJECTIVES
- CITY OF NEWTON CAPITAL IMPROVEMENT PLAN (CIP)
- ALIGNS WITH NAFF GOALS
- POTENTIAL FOR GREATEST CITY-WIDE BENEFIT
- PRIORITIZE FIELDS WITH PLAY EXPANSION POTENTIAL (SPORTS  
LIGHTING + SYNTHETIC TURF)
- PLAN FOR USE ALLOCATION AT T LIGHTED SYNTHETIC TURF  
FIELDS IN PREPARATION FOR THE LARGE FIELD RENOVATION  
PROJECTS
- POTENTIAL FOR EXPANSION OF MULTIUSE FIELDS
- USE AND CONDITIONS ASSESSMENT DATA (WORK IN PROGRESS)
- SPATIAL CRITERIA FOR REGULATION MULTIUSE FIELDS &  
FLEXIBILITY OF PLAY IN ATHLETIC FIELDS
- INTEGRATED WITH OTHER WORK AT THE SITE
- ALTERNATIVE FUNDING SOURCE OPPORTUNITIES
- POTENTIAL FOR IMPROVED ACCESSIBILITY
- IMPACT TO THE AREA'S STAKEHOLDERS
- GEOGRAPHIC DISTRIBUTION
- PROXIMITY TO VARIOUS MODES OF TRANSPORTATION
- EXISTING SAFETY ISSUES
- MEET EMERGING NEEDS
- POTENTIAL FOR STORMWATER IMPROVEMENTS

Newton Parks, Recreation and Culture Department

**Athletic Fields Capital Improvement Plan Criteria**



# CAPITAL PROJECT MANAGEMENT TEAM OBJECTIVES

## 1. EXPAND PROJECT MANAGEMENT

- ✓ Establish Parks + Open Space Division
  - ✓ Director
  - ✓ Assistant Director
- ✓ Expand project review capabilities
- ✓ Implement Park Ranger Program

## 2. DEVELOP STANDARD PROCESSES FOR PLANNING AND COMMUNICATING CAPITAL PROJECTS

- ✓ Develop community outreach process
- ✓ Increase engagement with commissions, committees and other stakeholders
- ✓ Establish project website for updates and information sharing
- ✓ Develop standards for project review

## 3. EXPAND AND STREAMLINE PROJECT PLANNING CAPABILITIES

- ✓ Procure and hire On-Call Services for project design

**DIRECTOR OF PARKS + OPEN SPACE:**

**LUIS PEREZ DEMORIZI**

**ASSISTANT DIRECTOR OF PARKS + OPEN SPACE:**

**GREG MELLETT**

**PARK RANGER:**

**ADAM NAHABEDIAN**

**ON-CALL CONSULTANTS:**

- **WESTON & SAMPSON**
- **CDM SMITH**



**PARKS + OPEN SPACE TEAM**

# 5 YEAR PLAN PROCESS



## ASSESS

- Field Permits and Usage
- Geographic Analysis
- Conditions Assessments
- Cont. Building Project List
- Capital Improvements Plan Updates
- Establish 5-year plan goals
- Prioritize Projects



## PLAN

- Community Engagement
- Consultant Proj. Review
- Construction Budgeting
- Design Construction Docs
- Permits and Approvals
- Secure Project Funding



## EXECUTE

- Technical Project Review
- Project Construction BID
- Construction
- Establishment Period

# FIELDS COMMUNITY, STAKEHOLDER AND COMMISSION MEETINGS TO DATE

## Athletic Fields Strategic Plan

- Athletic Field Sub-Committee - September 2020 Thru January 2022
- Athletic Fields Engineering Services RFQ - September 2021 Thru January 2022
- City Council Update - December 8<sup>th</sup>, 2021
- Conservation Commission Update - January 6<sup>th</sup>, 2022
- City Council Programs & Services Update - June 22<sup>nd</sup>, 2022
- Parks and Recreation Commission Update - June 22<sup>nd</sup>, 2022
- Commission on Disability Update - July 11<sup>th</sup>, 2022

## Albemarle:

- Community meeting 1 - October 20<sup>th</sup>, 2021
- Community Meeting 2 - May 3<sup>rd</sup>, 2022
- Community Meeting 3 - June 2<sup>nd</sup>, 2022
- Parks & Recreation Commission – April 25<sup>th</sup>; June 27<sup>th</sup>

## BOH, Burr School + McGrath:

- Community meeting 1 - October 20<sup>th</sup>, 2021; October 27<sup>th</sup>, 2021
- Community Meeting 2 - June 13<sup>th</sup>, 2022
- Parks & Recreation Commission (McGrath ONLY) – October 17<sup>th</sup>, 2022

## Brandeis Rd Field Sports Lighting:

- Community meeting 1 - NOVEMBER 10<sup>TH</sup>, 2021
- Community Meeting 2 - DECEMBER 9<sup>TH</sup>, 2021
- Light Demonstration – DECEMBER 20<sup>TH</sup>, 2021
- Buffer Planting w/ Abutters - January 19<sup>th</sup>, 2022

## Newton North Sports Lighting:

- Community meeting 1 - APRIL 5<sup>TH</sup>, 2022
- Light Demonstration – APRIL 7<sup>TH</sup>, 2022

## Newton Synthetic Turf Replacements:

- Community meeting 1 - OCTOBER 24<sup>TH</sup>, 2022
- Community meeting 2 - NOVEMBER 2<sup>ND</sup>, 2022

## Focus Groups and Stakeholders

- Friends of Albemarle
- Burr School PTO & Principal
- BOH Schools PTO & Principals
- BOH Athletic Directors
- Newton South HS Athletic Director
- Newton North HS Athletic Director
- F.A. Day MS Athletic Director + Principal
- Bike Newton
- Safe Routes to Schools
- Newton Girls Soccer
- Newton Youth Soccer
- Ultimate Disk
- Newton Little League
- Newton Girls Softball
- Friends of Newton Tennis
- City Council
- Abutters and other community members

# PLAY EXPANSION GOALS + OBJECTIVES

1. EXPAND PLAY AT EXISTING SYNTHETIC TURF FIELDS
  - NNHS Tiger Stadium Sports Lighting
  - ✓ NSHS Stadium + Brandeis Rd. Field Sports Lighting
  
2. INCREASE AVAILABILITY OF SYNTHETIC TURF FIELDS
  - Albemarle Playground (1)
  - Forte Park (1)
  
3. EXPAND IRRIGATION AND GRASS TURF AT UNIRRIGATED, LOWER QUALITY GRASS FIELDS
  - Burr School Fields
  - Auburndale “The Cove”
  - West Newton Common
  - Boyd Park (Lincoln-Elliot)
  - Pellegrini
  
4. REMOVE UNDERUTILIZED BALL DIAMONDS WHENE FEASIBLE
  - McGrath
  - Albemarle

# EXPANDING PLAY AT EXISTING SYNTHETIC TURF FIELDS

- SPORTS LIGHTING AT SYNTHETIC TURF FIELDS:
  - ADDITIONAL 3 HOURS OF PLAY PER EVENING IN FALL AND WINTER
  - ADDITIONAL 1.5 HOURS OF PLAY PER EVENING IN SPRING AND SUMMER
  - AVERAGE ANNUAL USE EXPANSION: 500 HRS (BASED ON NSHS STADIUM LIGHT DATA)



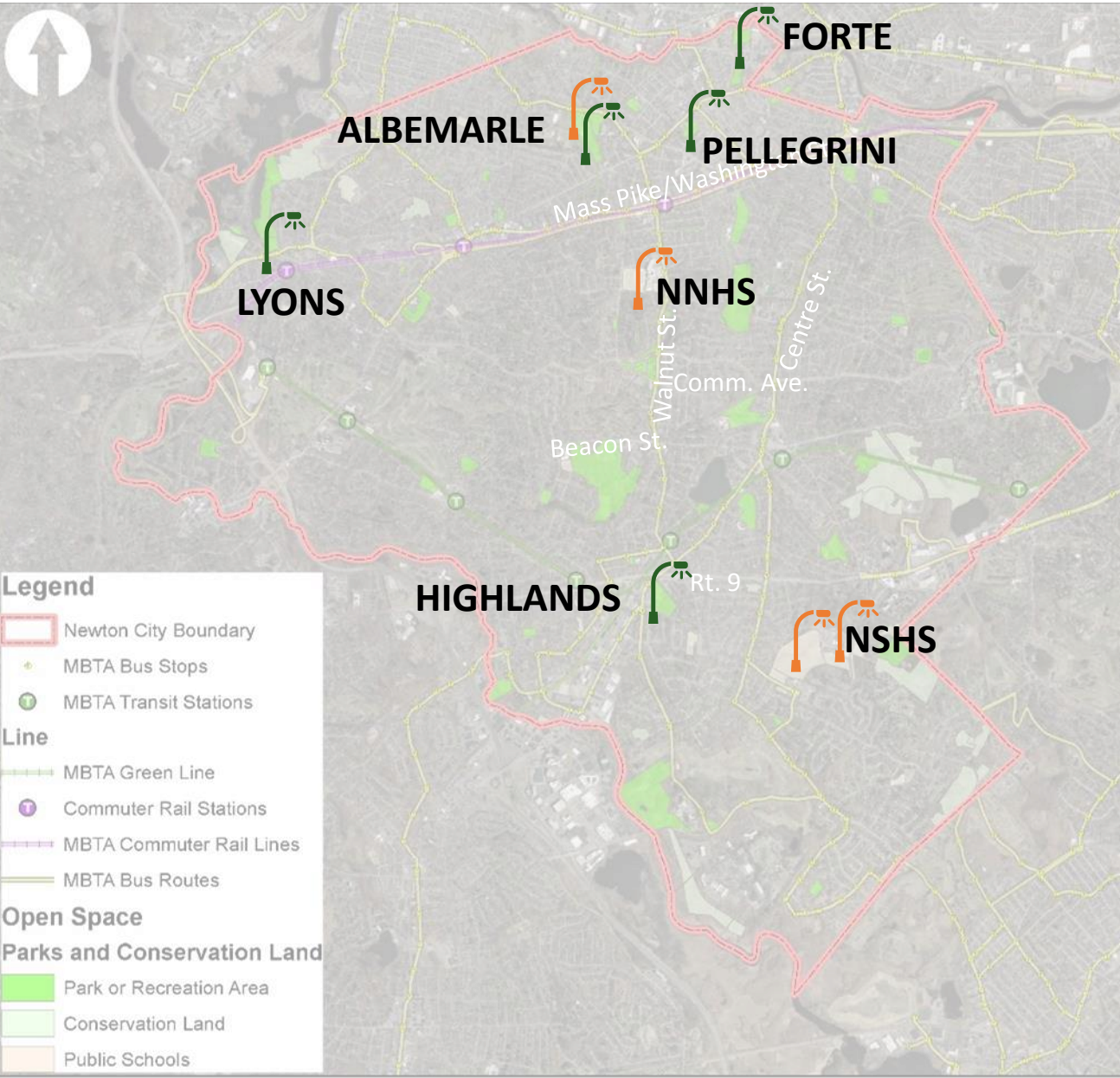
NSHS WINKLER STADIUM LIGHTS (COMPLETED)



NNHS TIGER STADIUM LIGHTS (2023)

Newton Parks, Recreation and Culture Department

**Athletic Fields Capital Improvement Plan**



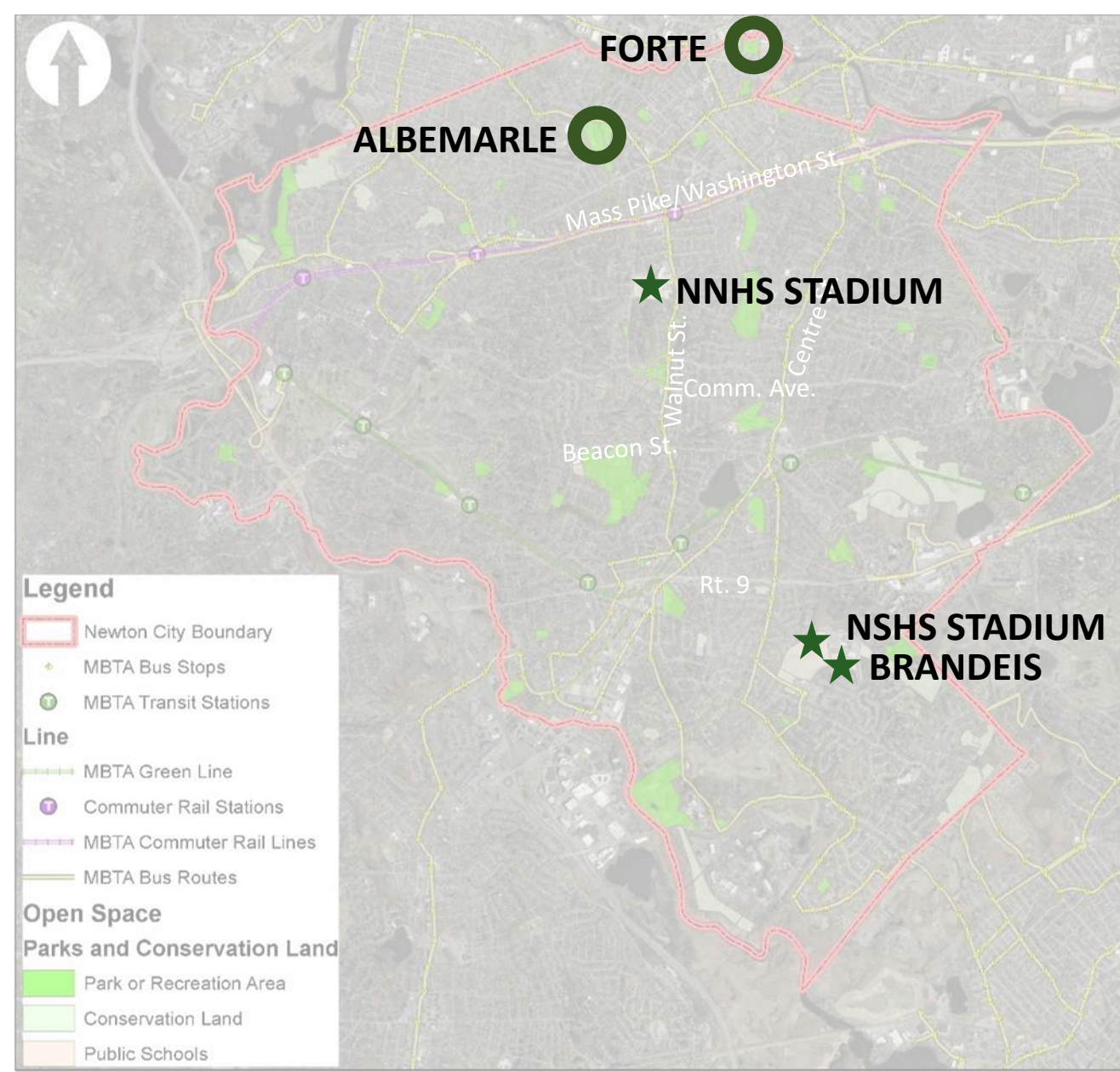
**EXISTING LIGHTED ATHLETIC FACILITIES:**

- ALBEMARLE PARK
- FORTE PARK
- LYONS PARK
- NEWTON HIGHLANDS PLAYGROUND
- PELLEGRINI PARK

**PLAY EXPANSION:**

- NEWTON SOUTH HS BRANDEIS RD FIELD
- NEWTON SOUTH HS STADIUM
- NEWTON NORTH HS TIGER STADIUM FIELD
- ALBEMARLE - MURPHY FIELD

Newton Parks, Recreation and Culture Department  
**Athletic Fields Capital Improvement Plan**



**Existing Synthetic Turf Fields:**

- Newton North HS Stadium Track & Field
- Newton South HS Stadium Track & Field
- Newton South HS Brandeis Rd Field

**TOTAL: 3 Projects; 2 Locations**

**Synthetic Turf Field Expansion:**

- Albemarle
- Forte Park

**TOTAL: 2 Projects**

Newton Parks, Recreation and Culture Department  
**Athletic Fields Capital Improvement Plan**





**NSHS SYNTHETIC TURF REPLACEMENTS**



**NNHS SYNTHETIC TURF REPLACEMENT**



**MULTIPURPOSE SYNTHETIC TURF FIELD @ ALBEMARLE**



**FORTE PARK MULTIPURPOSE SYNTHETIC TURF RETROFIT**

# ATHLETIC FIELD CAPITAL IMPROVEMENTS GOALS + OBJECTIVES

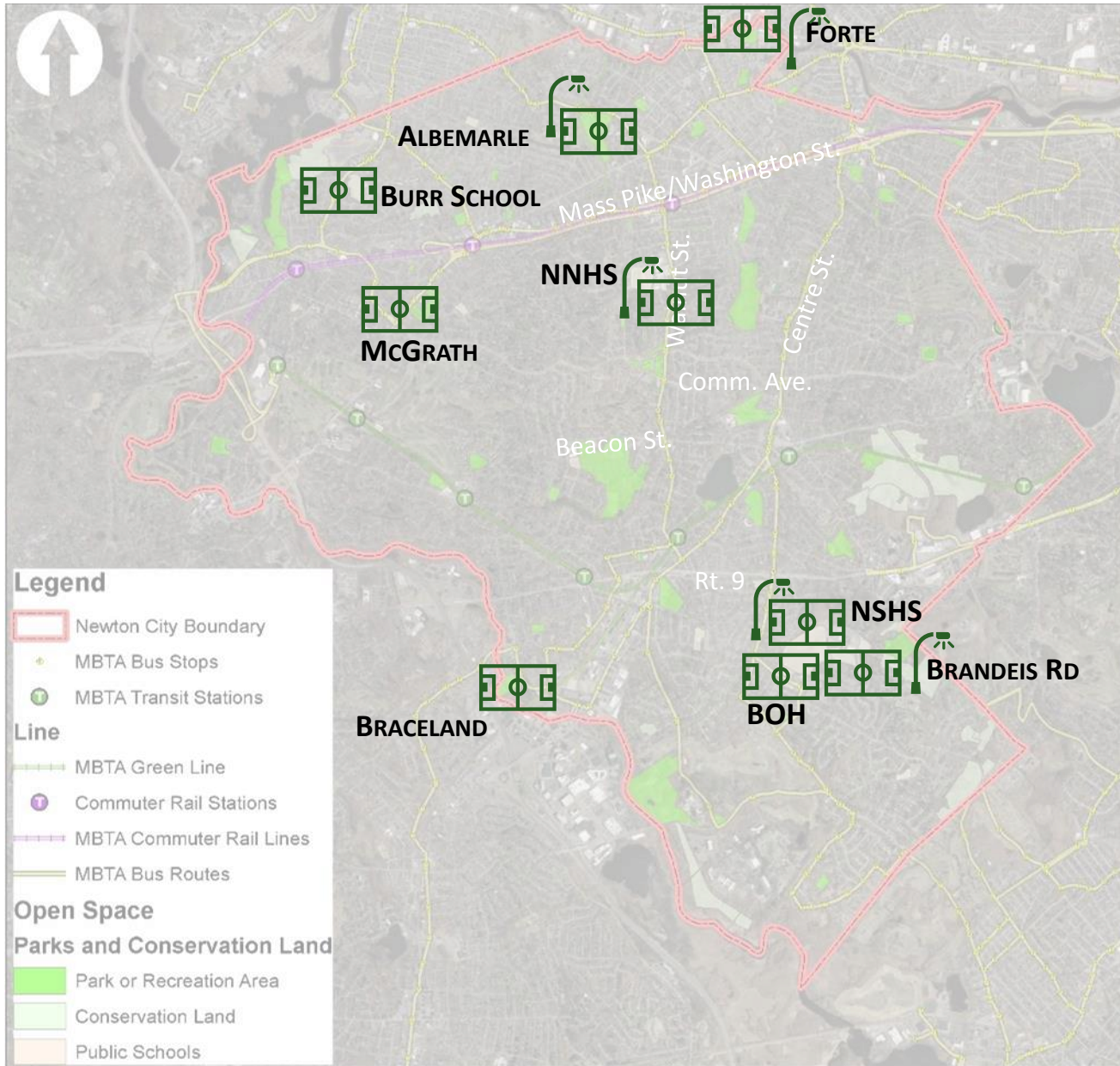
## 1. IMPROVE QUALITY AND QUANTITY OF ATHLETIC FIELDS

- Increase Play Opportunities thru Sports lighting, Synthetic Turf and grass field expansion
- Replace end-of-life Sports Lighting
- Improve quality of athletic field surfaces
- Increase available regulation-size athletic fields on Park and School lands
- Replace and expand synthetic turf field offerings
- Maximize flexibility of field usage in grass fields

## 2. IMPROVE ACCESSIBILITY TO AND WITHIN FIELD AMENITIES

## 3. IMPROVE ASSET MANAGEMENT THROUGH SUSTAINABLE, SMART TECHNOLOGY

- Smart Irrigation
- Smart, low-spillage lighting
- Utilize better, more sustainable materials
- Standardize site amenities (back stops, synthetic turf carpets and infills, benches
- Reduce mowing in ancillary areas to increase potential for wildlife habitat



### Current 5-Year Plan Projects + Status

Project	Construction Status	Project Type
Albemarle Playground Phase 1	Fall 2024	Parks/Athletic Fields
Burr School Field Improvements	Design Development	Athletic Fields
Bobby Braceland/ Upper Falls Playground	In Progress	Parks/Athletic Fields
Brown/Oak Hill Field Improvements	In Progress	Athletic Fields
Forte Park Field and Sports Lighting Improvements	<b>2024</b>	Athletic Fields
McGrath Park Fields	Design Development	Parks/Athletic Fields
Newton South Brandeis Rd. Field Sports Lighting	<b>Completed 2022</b>	Sports Lighting
Newton South Stadium Sports Lighting	<b>Completed 2020</b>	Sports Lighting
Newton South Stadium + Brandeis Synthetic Turf Replacement	<b>Summer 2023</b>	Athletic Fields
Newton North Tiger Stadium Sports Lighting	<b>Summer 2023</b>	Sports Lighting
Newton North Tiger Stadium Synthetic Turf Replacement	<b>TBD</b>	Athletic Fields

Newton Parks, Recreation and Culture Department  
**Capital Improvements Plan**



NEWTON SOUTH HIGH SCHOOL SPORTS LIGHTING



# NNHS STADIUM SPORTS LIGHTING



ALBEMARLE PHASE 1

# STAGED APPROACH TO IMPLEMENTATION



# PLAN HIGHLIGHTS - *Sports Lighting*

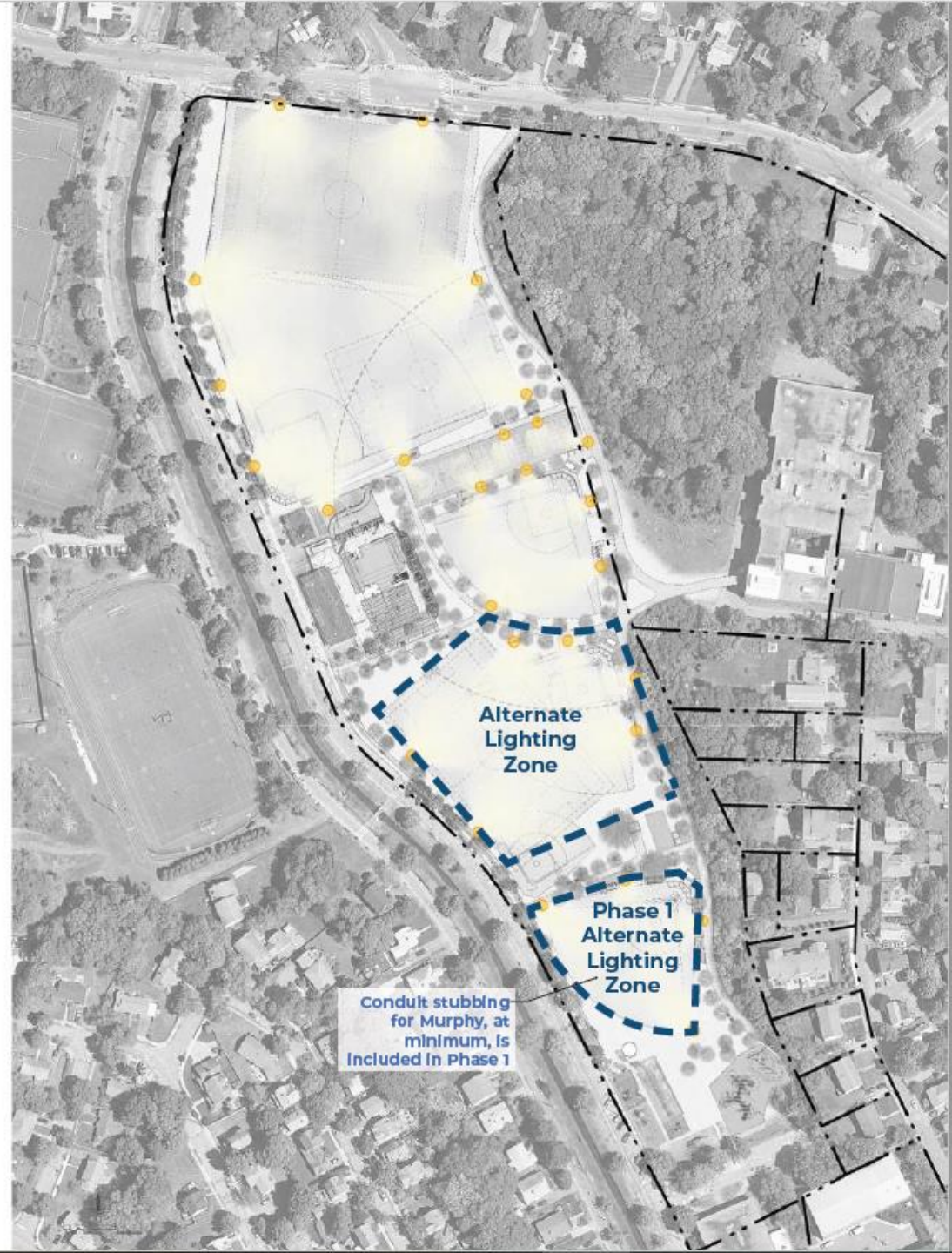


**Sports Lighting**



**Property Lines (approximate)**

NOTE: Not shown but to be considered will be pedestrian lighting along the multi-use pathway and key connections from F.A. Day Middle School to Albemarle Road.





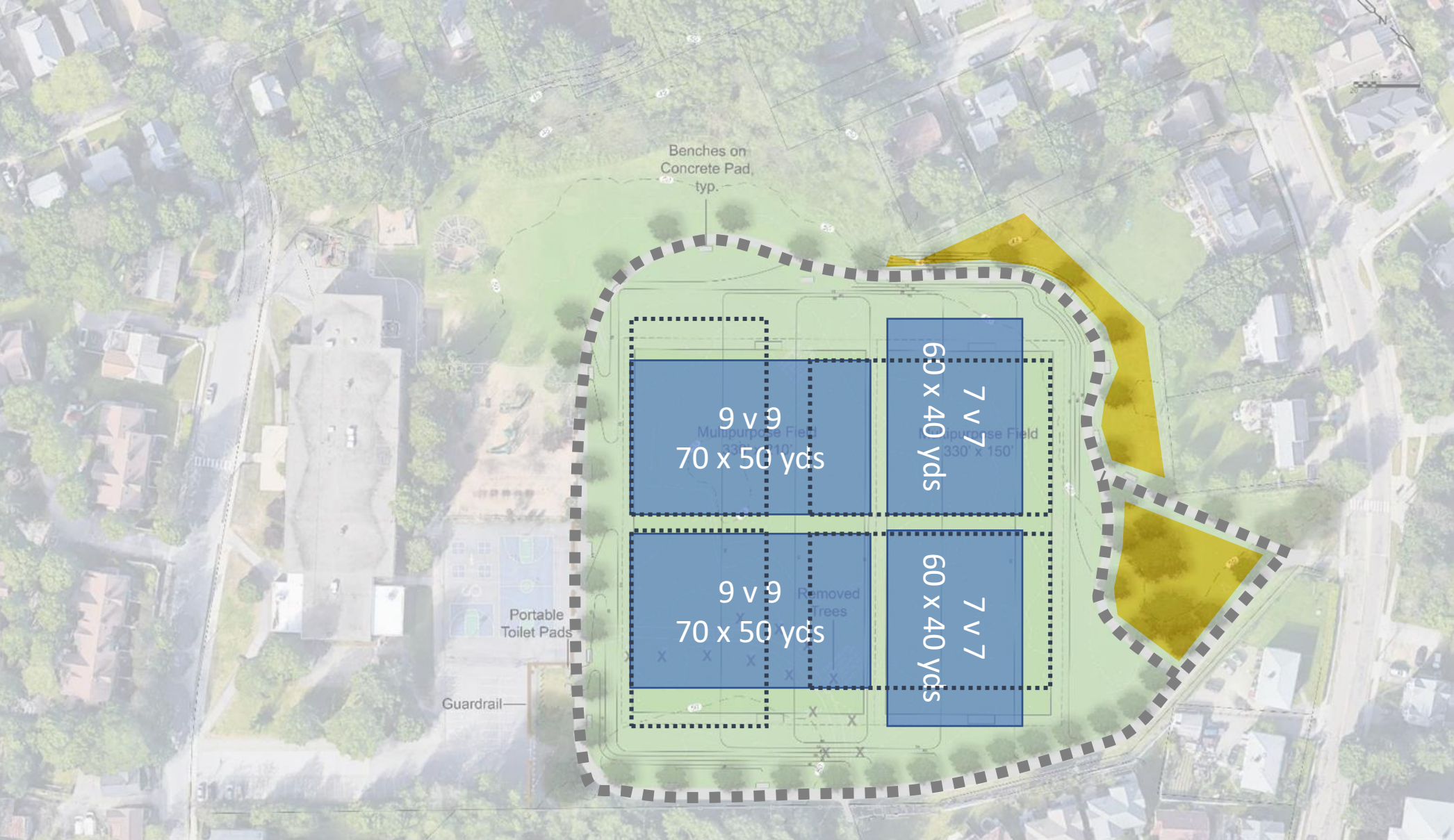


BURR SCHOOL FIELDS

# Burr School Conceptual Site Plan – Soccer Fields



# Burr School Conceptual Site Plan – Soccer Fields

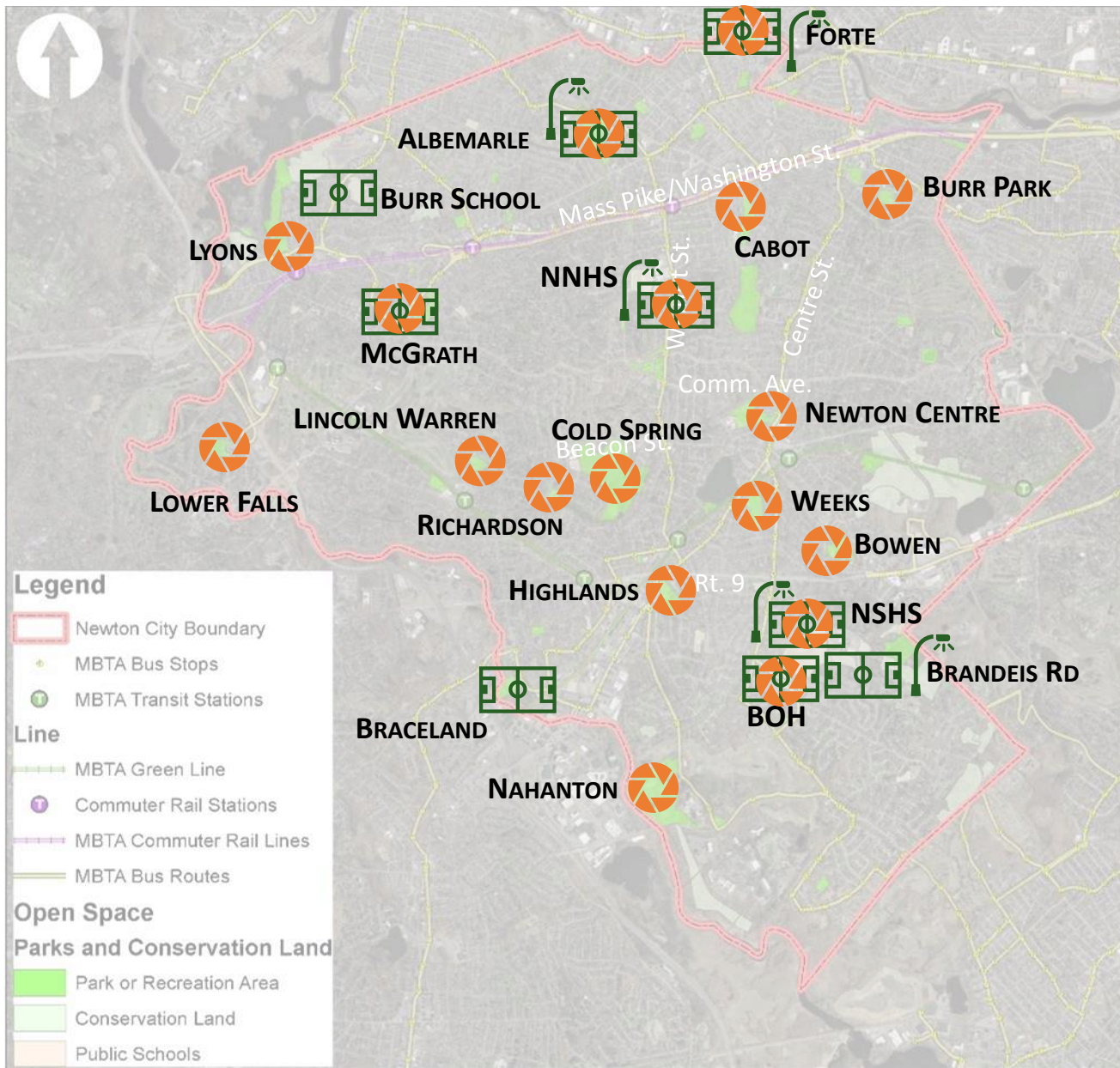




MCGRATH PARK

# McGrath Park Conceptual Site Plan – Lacrosse Fields





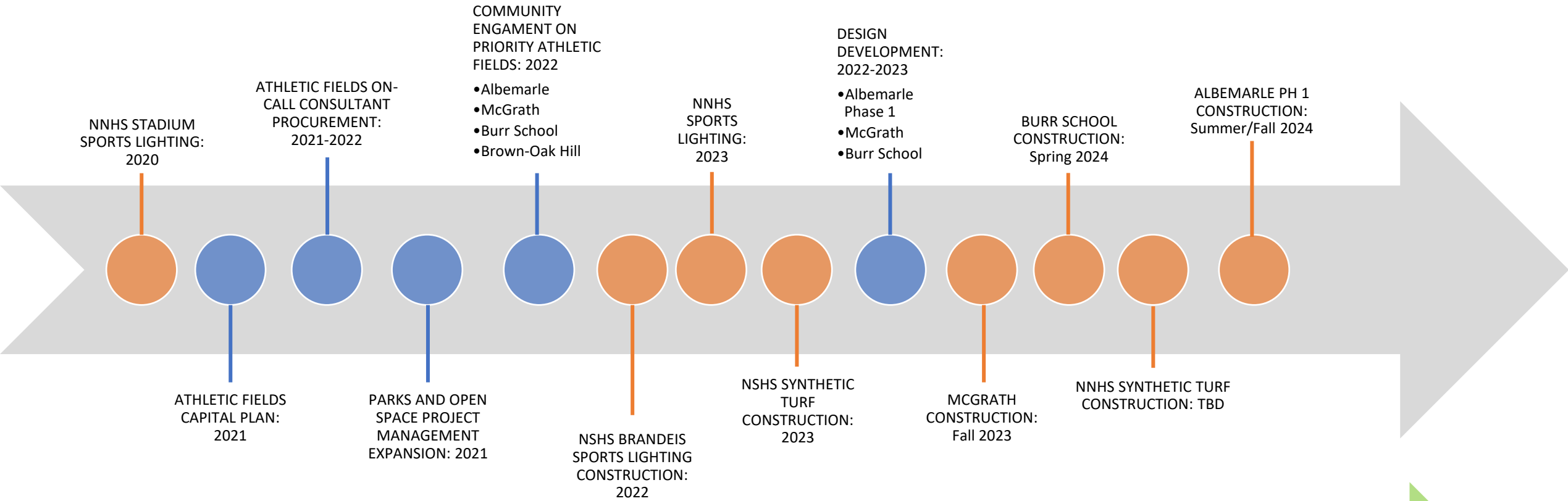
Current Projects + Status		
Project	Construction Status	Project Type
Albemarle Playground Phase 1	Fall 2024	Parks/Athletic Fields
Albemarle Athletic Fields	On Going	Turf Management
Burr School Field Improvements	Design Development	Athletic Fields
Burr Park Fields	On Going	Turf Management
Bobby Braceland/ Upper Falls Playground	In Progress	Parks/Athletic Fields
Brown/Oak Hill Field Improvements	In Progress	Athletic Fields
Brown/Oak Hill Fields	On Going	Turf Management
Bowen Athletic Fields	On Going	Turf management
Cabot Pasrk Fields	On Going	Turf Management
Cold Spring Park Fields	On Going	Turf Management
Forte Park Field and Sports Lighting Improvements	2024-2025	Athletic Fields
Forte Park Fields	On Going	Turf Management
Highlands Athletic Fields	On Going	Turf Management
Lincoln-Warren Athletc Fields	On Going	Turf Management
Lower Falls Athletic Fields	On Going	Turf Management
Lyons Field	On Going	Turf Management
McGrath Park Fields	Design Development	Parks/Athletic Fields
Mcgrath Athletic Fields	On Going	Turf Management
Nahanton Atthletic Fields	On Going	Turf Management
Newton Centre Athletic Fields	On Going	Turf Management
Newton South Brandeis Rd. Field Sports Lighting	Completed 2022	Sports Lighting
Newton South Stadium Sports Lighting	Completed 2020	Sports Lighting
Newton South Stadium + Brandeis Synthetic Turf Replacement	Summer 2023	Athletic Fields
Newton South Ahtletic Fields	On Going	Turf Management
Newton North Tiger Stadium Sports Lighting	Spring/Summer 2023	Sports Lighting
Newton North Tiger Stadium Synthetic Turf Replacement	Summer 2024	Athletic Fields
Newton North Athletic Fields	On Going	Turf Management
Richardson Athletic Fields	On Going	Turf Management
Weeks Athletic Fields	On Going	Turf Management

### Improving Quality and Quantity at 20 Athletic field sites

- 18 sites with Increased Grass Turf Management
- 11 Capital Projects

## Newton Parks, Recreation and Culture Department Capital Improvements Plan

# 5 YEAR ATHLETIC FIELD PLAN OUTLOOK



Continue Assessment

Continue planning

## NEXT STEPS ON ATHLETIC FIELDS PLAN:

- CPA Construction Funding Request (February Thru April)
- Finalize field project plans to shovel-ready status
- Begin Construction Fall 2023
- Continue monitoring, evaluating and improving grass field maintenance
- Continue evaluating and analyzing field usage
- Continue evaluating and prioritizing projects for the next 5 years

Assess

Planning

Execute



# Synthetic turf benefits

- Current fields are synthetic turf and provide near year-round use
- Can handle unlimited use including during peak-use seasons
- Zero downtime: weather, rain do not impact availability
- Synthetic turf fields equal to approx. 3 grass fields
- Every hour on turf is an hour not on grass



# Turf and lights at the High Schools

- # of sports has increased over time (e.g., lacrosse)
- # of teams: NSHS, NNHS have more teams because they have Varsity, JV, and Fresh. Sports
- Configured to host most all rectangular sports
- Maximize # of players during practices
- Less travel needs for students to get to fields
- Onsite Amenities include lockers, rest rooms, shower/changing area
- Athletic trainer onsite after school
- Onsite Parking

# Synthetic Turf Fields In Neighboring Communities

Municipality	Population	# of Muni. Public Synth. Turf Fields	# of Public High Schools	# of HS Students	# of Students/Synth. Turf Field
CAMBRIDGE	117,090	7	3	1,867	266
SOMERVILLE	79,815	4	1	1,310	327
WALTHAM	64,015	5	1	1,751	350
BROOKLINE	59,223	4	1	2,087	521
ARLINGTON	42,844	3 (Soon to be constructed)	1	1,527	509
LEXINGTON	33,792	4	1	2,303	575
MEDFORD	62,098	2	1	1,260	630
NEEDHAM	31,248	3	1	1,645	548
WELLESLEY	28,747	3	1	1,412	470
<b>NEWTON</b>	<b>87,453</b>	<b>3</b>	<b>2</b>	<b>3,936</b>	<b>1,312</b>

- Data collected through email confirmations by various recreation departments and data available online for each municipality
- Population data for each school district derived from Mass Dept. of Education
- Municipal population data gathered from available population data through Google.

Key Findings:

- High School students in Newton (NNHS +NSHS) make up approximately 4.5% of total population
- On average, HS students for nearby towns make up between 1.5% to 4% of the total population
- Newton has the most students per synthetic turf as compared to neighboring communities

Newton Parks, Recreation and Culture Department  
**Athletic Fields Capital Improvement Plan**

# Questions and Discussion

For additional questions and input please contact: [athleticfields@newtonma.gov](mailto:athleticfields@newtonma.gov)

For Presentation, Chat, recordings and meeting recordings, please go to  
[www.newtonma.gov/fieldprojects](http://www.newtonma.gov/fieldprojects)