

# Countryside School Project



Project is in feasibility study phase — drawings are conceptual and depict one of several options being studied

## Approach 6A | Preliminary Location Options



- Entrance to main lobby centrally located between Dedham Street north & south
- First floor same level as main entrance (two entryways)
- Takes advantage of higher ground above 100-yr flood elevation for entry plaza
- Service and loading area access from Dedham Street east - does not require additional fill and retaining walls
- Gym location - direct access to fields and playground
- Construction of new building is approximately 10 feet away from existing building
- Classroom wing has north-south orientation

11

The above concepts are just one of several options we are working on with the Countryside School Building and Design Review Committees and the Community.

## Approach 6A | 465 Students | New Construction | 75,500 SF



- Meets MSBA Space Guidelines
- Ideal spatial relationships and adjacencies
- Gymnasium on first floor
- Kindergarten on first floor
- North / South solar orientation classrooms

12

The Countryside School project is currently in the feasibility design phase in partnership with the Massachusetts School Building Authority, MSBA. We just recently submitted the Preliminary Design Program to the MSBA, which can be viewed [here](#). The school will be built to accommodate 465 students, which is the same as the Angier School.

Simultaneously, we are studying repair only, addition and renovation, and new construction options. The repair only and the addition renovation options have quickly become not viable due to the inability of those options to meet the legal requirements of elevating the building to above the flood plain elevation. Although we still have some due diligence to perform to completely reject the repair only and addition and renovation options, our primary focus at this point is studying several new construction options.

The addition and renovation option would meet the educational program and provide the number and size of spaces needed for the students. However, the current school sits too deep within the flood zone. The legal requirements to resolve this matter would mean that we would need to raise the main floor of the entire building by several feet. There is not enough room from the floor to the ceiling to do this. The corresponding modifications to the existing building may make this scenario not viable, and at a minimum could make the approach cost prohibitive.

Over the past year, we have worked directly with the Countryside School staff through visioning sessions where they directly helped shape the project design. We've also completed our site search and selection process, which included the evaluation of almost 150 sites throughout Newton. Out of those sites, there were only a small handful within the Countryside School district, which were all either parks or sites currently used for other municipal purposes, and which were also on the very outer edges of the district and cost prohibitive to redevelop. Therefore, the recommendation was that the current Countryside School site remain the site for the school project.

We recently received a report from Horsley Witten, an incredible civil engineering firm that specializes in working in and around flood plains. They have proven and explained that the Countryside site is undeniably viable, and that the proposed siting and elevation of the new building will sit above the 500-year flood plain. They also explained that we will at a minimum maintain as much flood storage capacity as exists today, and possibly increase the flood storage capacity in the end. Through the use of porous asphalt, bioswales, rain gardens, and other stormwater mitigation efforts, we will have a very positive impact on the site and the neighborhood. To hear directly from the professionals at Horsley Witten, please click [here](#), and to read their summary report you can click [here](#).

We've still got a tremendous amount of design work left to do, but you can review all project information, presentations, and materials at [countrysideelementaryschoolproject.com](http://countrysideelementaryschoolproject.com).

We anticipate starting construction in the summer of 2025 and completing construction in the summer of 2027.

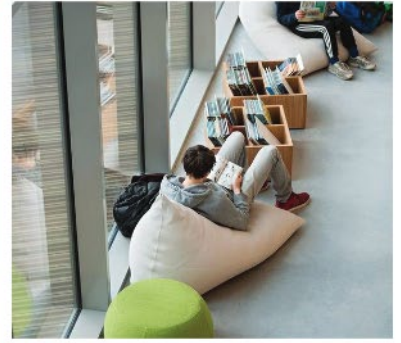
If you have any questions or comments about this project, you can email us at [countryside@newtonma.gov](mailto:countryside@newtonma.gov). The next Countryside School Building Committee and Community meeting is on Tuesday, March 9<sup>th</sup> at 6:00pm and you can register for the meeting by clicking [here](#). To view the recording of a recent Countryside School project presentation please click [here](#).

## Lincoln-Eliot School Project



The view above is what staff, students, and parents will see as they enter the school. The library has become the heart of the school, with great sight lines, ample natural light, and a welcoming feel.

## INTERIOR VIEW - MEDIA CENTER



You'll see in the above image that we have been working with Principal Morse to refine the cafeteria to ensure that it is fun, vibrant, and functional.

The Lincoln-Eliot School project has now entered the final design phase. Our focus over the past few months has been refining the design of the addition and several interior spaces in the existing

building. and adding details to the interior spaces and the site features. We just recently presented the latest designs and renderings to the School Building, Design Review, and School Committees and the response has been unanimously positive. We've also begun to work on the interior materials, colors, and finishes which is always a fun step as it begins to breathe life into the spaces. With our building massing now firmly established, we have begun to study and select the exterior building materials, colors, and finishes for the addition. The project is on track to begin selective demolition in the fall of 2023, and complete construction in the summer of 2025.

To watch the recording of the latest presentation please click [here](#). To view the presentation itself, you may click [here](#).

If you have any questions or comments about this project, you can email us at [lincolneliot@newtonma.gov](mailto:lincolneliot@newtonma.gov), or you can check out our project website at [lincolneliot-necp-projects.com](http://lincolneliot-necp-projects.com).

## Franklin School Project



The Franklin School staff working hard to help plan for the future of the Franklin School.

## New School Design Patterns

## Cafetorium Multi-Purpose Space



So many possibilities for the Franklin School.

## New School Design Patterns

## Heart of the School



What do you think the “heart” of Franklin School should be? The cafeteria? The library? Maybe the art room or music?

## New School Design Patterns

## Flexible Furniture



## New School Design Patterns

## Agile Classrooms



Anyone who has seen some of the spaces at Franklin can just imagine what things could be like with classrooms like the ones shown above.

Should the voters support funding the Franklin School Project in a few weeks, we will immediately move forward with all deliberate speed to make this project happen. To that end, and pending the outcome of the upcoming vote, the next meeting of the Franklin School Building Committee, Design Review Committee, and community will be on Tuesday, March 21<sup>st</sup> at 6:00pm. You can register in advance for this meeting by clicking [here](#).

We anticipate starting construction in the summer of 2025 and completing construction in the summer of 2027.

To review the presentation, project information, and materials you can go to our project website [here](#). If you have any questions or comments about this project, you can email us at [franklin@newtonma.gov](mailto:franklin@newtonma.gov).

## Horace Mann School Project



The above image shows some of the notes from the Horace Mann School staff visioning session.



## Ground Floor Cafetorium Lobby



Connection to Cafetorium and Lobby Below



Should the voters support funding the Horace Mann School Project in a few weeks, we will immediately move forward with all deliberate speed to make this project happen. To that end, and pending the outcome of the upcoming vote, the next meeting of the Franklin School Building Committee, Design Review Committee, and community will be on Monday, March 20<sup>th</sup> at 6:00pm. You can register in advance for this meeting by clicking [here](#).

The goal is to move forward with finishing the feasibility design phase this spring and complete the design by the end of 2024. Construction is expected to start in the winter of 2025 and be complete by the fall of 2026.

To learn more about this project you check out our website [here](#). If you have any questions or comments about this project, you can email us at [horacemann@newtonma.gov](mailto:horacemann@newtonma.gov).

# Newton Center for Active Living, NewCAI, Project



Lobby View Towards Reception



Lobby View Towards Multiple Purpose Room



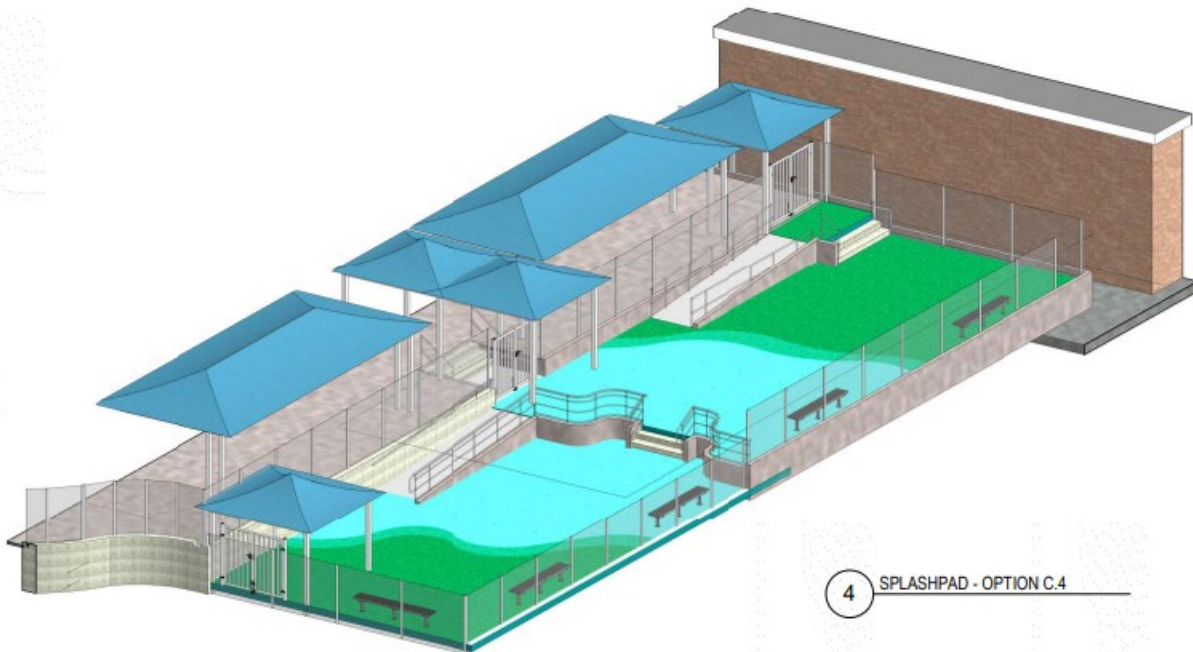
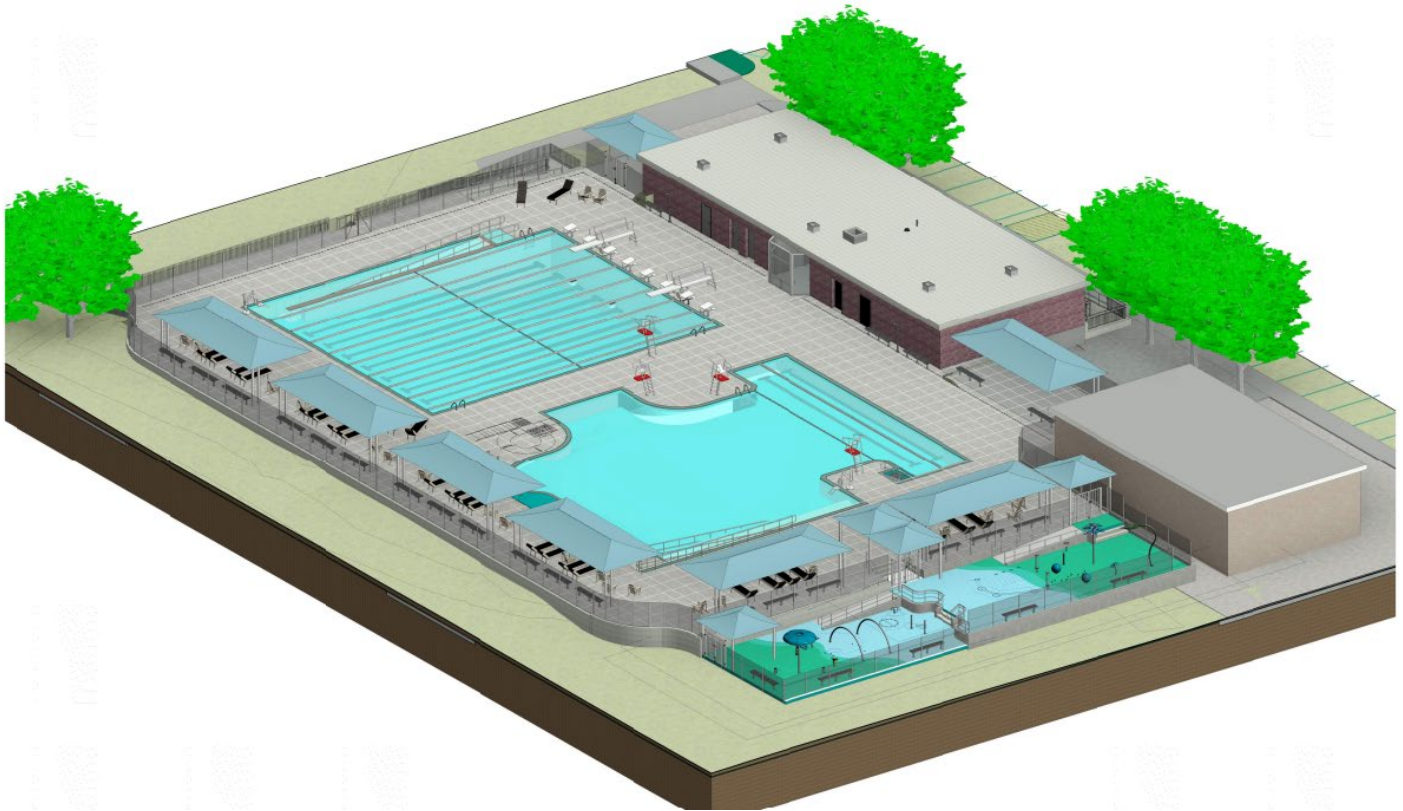
Walnut Street and Highland Avenue

The NewCAL project has entered the final design phase. This design phase is where the architects and engineers work to convert the design documents into something that perspective contractors can submit competitive bids for. The interior of the building has evolved in subtle ways in direct response to feedback from the community and various stakeholders.

We are on track to begin selecting historical salvage this spring, and demolition this summer. Construction is expected to be complete in the summer or fall of 2024.

Additional project info can be found at [newcal.projects.nv5.com](https://newcal.projects.nv5.com). If you have any questions or comments about this project, you can email us at [newcal@newtonma.gov](mailto:newcal@newtonma.gov). To watch a recoding of the last NewCAL community meeting, please click [here](#). The next NewCAL community meeting will be on Thursday, March 16<sup>th</sup> at 6:30pm and you can join the meeting by clicking [here](#).

# Gath Pool Project



4 SPLASHPAD - OPTION C.4

The Gath Pool project is well into the schematic design phase. Working with our design team from BH+A, we have found a way to address our goals and objectives, while also creating a two-pool design that will work better for all stakeholders. The latest two-pool design can be seen above.

The new pool design and all previous project materials can be viewed at <http://www.newtonma.gov/gathpoolproject>.

Our focus at this point is on refining the technical aspects of the project to address stormwater improvements, pool support system specifications and design, and many other elements of the design that most people will never see, but that the facility relies heavily upon. Although the building footprint is not changing, and the site plan is remarkably similar to what exists today, we will be seeking site plan approval this month to maintain our project schedule. We will also be working closely with the Community Preservation Committee in the coming months as we seek Community Preservation Act funds to help fund the project. We will be moving quickly to advance the design so that we may start construction immediately after the 2023 swim season concludes, with our goal of opening the new pool for the start of the 2024 swim season.

If you have any questions or comments about this project, you can email us at [gathpool@newtonma.gov](mailto:gathpool@newtonma.gov). To see a recent presentation to the Parks and Recreation Commission on the Gath Pool project, please click [here](#).

## Newton Early Childhood Program, NECP, Project



The NECP project is complete, and the students have moved in. It's so exciting to see Newton's youngest learners and the incredible NECP staff settling into their new home. The project was completed on time and on budget. After converting the building to completely electric heating and cooling we enrolled in Newton Power Choice making NECP the first net zero school in Newton.