

UTILITY NOTES

THE PRINCIPAL GUIDELINES FOR UNDERGROUND UTILITY MAPPING ARE THE AMERICAN SOCIETY OF CIVIL ENGINEERS (ASCE) CI/ASCE 38-02, STANDARD GUIDELINE FOR THE COLLECTION AND DEPICTION OF EXISTING SUBSURFACE UTILITY DATA, 2003.

UTILITY QUALITY LEVEL INFORMATION INDEX (ASCE/CI 38-02):

QUALITY LEVEL D: "QLD" UTILITY INFORMATION PLOTTED ON THE DRAWING BASED SOLELY ON RECORD INFORMATION, INDIVIDUAL RECOLLECTIONS OR THE EXISTENCE OF UTILITY SERVICE. IT SHALL BE NOTED THAT ALL INFORMATION SHOWN (OTHER THAN AT TEST HOLE LOCATIONS, SEE "QLA" BELOW), INCLUDE BUT NOT LIMITED TO UTILITY SIZE, CAPACITY, MATERIAL COMPOSITION, CONDITION OR SERVICE STATUS SHALL BE CONSIDERED "QLD" EVEN THOUGH THE UTILITY MAY BE PLOTTED AND LABELED AS "QLC" OR "QLB".

QUALITY LEVEL C: "QLC" UTILITY INFORMATION OBTAINED AS ABOVE FOR QUALITY LEVEL D, PLOTTED TO CORRELATE WITH SURFACE UTILITY FEATURES WHICH HAVE BEEN FIELD VERIFIED, SURVEY LOCATED AND ACCURATELY REDUCED ONTO THE DESIGN/CONSTRUCTION DOCUMENTS. INCLUDED IN THIS CATEGORY ARE UTILITY DEPICTIONS, WHICH IN THE PROFESSIONAL OPINION OF THE SUBSURFACE UTILITY ENGINEER REPRESENT THE MOST PROBABLE APPROXIMATE HORIZONTAL LOCATION, TYPE AND/OR EXISTENCE OF A UTILITY.

QUALITY LEVEL B: "QLB" UTILITY INFORMATION DERIVED BY ESTABLISHING THE SURFACE HORIZONTAL LOCATION OF A UTILITY USING ELECTRONIC METHODS. SAID INFORMATION IS SUBSEQUENTLY FIELD LOCATED AND ACCURATELY REDUCED ONTO THE DESIGN/CONSTRUCTION DOCUMENTS.

QUALITY LEVEL A: "QLA" UTILITY INFORMATION WHICH HAS BEEN VISUALLY VERIFIED, SURVEY LOCATED (BOTH HORIZONTALLY AND VERTICALLY) AND ACCURATELY REDUCED ONTO THE DESIGN/CONSTRUCTION DOCUMENTS. THIS IS TYPICALLY SHOWN AS A TEST HOLE OR OTHER DIMENSIONED INFORMATION.

ALL UNDERGROUND UTILITIES SHOWN HEREON ARE QUALITY LEVEL "D" (QLD) PER ASCE STANDARD 38-02 DESIGNATION UNLESS OTHERWISE NOTED. THEY ARE APPROXIMATE ONLY AND WERE COMPILED ACCORDING AND WERE COMPILED ACCORDING TO AVAILABLE RECORDS FROM THE VARIOUS COMPANIES AND PUBLIC AGENCIES. ACTUAL LOCATIONS MUST BE DETERMINED IN THE FIELD. BEFORE DESIGNING, EXCAVATING, BLASTING, INSTALLING, BACKFILLING, GRADING, PAVEMENT RESTORATION, REPAIRING OR OTHER CONSTRUCTION, ALL UTILITY COMPANIES MUST BE NOTIFIED INCLUDING THOSE IN CONTROL OF UTILITIES NOT SHOWN ON THIS PLAN. SEE CHAPTER 370, ACTS OF 1963, MASSACHUSETTS. CALL "DIG-SAFE" AT 1-888-344-7233 OR DIAL 811. DGT SURVEY GROUP ASSUMES NO RESPONSIBILITY FOR DAMAGES INCURRED AS A RESULT OF UTILITIES OMITTED OR INACCURATELY SHOWN. BEFORE FUTURE CONNECTIONS, THE APPROPRIATE UTILITY ENGINEERING DEPARTMENTS MUST BE CONSULTED.

UTILITY LEGEND

QUALITY LEVEL "A" INFORMATION ("QLA")	
— C-QLA	COMMUNICATIONS: CABLE TELEVISION, ALARM OR SIGNAL LINES
— D-QLA	DRAIN
— E-QLA	ELECTRIC: ELEC. POWER LINES, CABLES, CONDUIT & LIGHTING CABLES
— FO-QLA	COMMUNICATIONS: FIBER OPTIC
— G-QLA	PRODUCT: GAS, OIL, STEAM, PETROLEUM OR GASEOUS MATERIALS
— S-QLA	SEWER
— T-QLA	COMMUNICATIONS: TELEPHONE
— U-QLA	UNVERIFIED / UNKNOWN UTILITY TYPE
— W-QLA	WATER: LOW PRESSURE, HIGH PRESSURE, FIRE SERVICE

QUALITY LEVEL "B" INFORMATION ("QLB")	
--- C-QLB	COMMUNICATIONS: CABLE TELEVISION, ALARM OR SIGNAL LINES
--- D-QLB	DRAIN
--- E-QLB	ELECTRIC: ELEC. POWER LINES, CABLES, CONDUIT & LIGHTING CABLES
--- FO-QLB	COMMUNICATIONS: FIBER OPTIC
--- G-QLB	PRODUCT: GAS, OIL, STEAM, PETROLEUM OR GASEOUS MATERIALS
--- S-QLB	SEWER
--- T-QLB	COMMUNICATIONS: TELEPHONE
--- U-QLB	UNVERIFIED / UNKNOWN UTILITY TYPE
--- W-QLB	WATER: LOW PRESSURE, HIGH PRESSURE, FIRE SERVICE

QUALITY LEVEL "C" INFORMATION ("QLC")	
- - - C-QLC	COMMUNICATIONS: CABLE TELEVISION, ALARM OR SIGNAL LINES
- - - D-QLC	DRAIN
- - - E-QLC	ELECTRIC: ELEC. POWER LINES, CABLES, CONDUIT & LIGHTING CABLES
- - - FO-QLC	COMMUNICATIONS: FIBER OPTIC
- - - G-QLC	PRODUCT: GAS, OIL, STEAM, PETROLEUM OR GASEOUS MATERIALS
- - - S-QLC	SEWER
- - - T-QLC	COMMUNICATIONS: TELEPHONE
- - - U-QLC	UNVERIFIED / UNKNOWN UTILITY TYPE
- - - W-QLC	WATER: LOW PRESSURE, HIGH PRESSURE, FIRE SERVICE

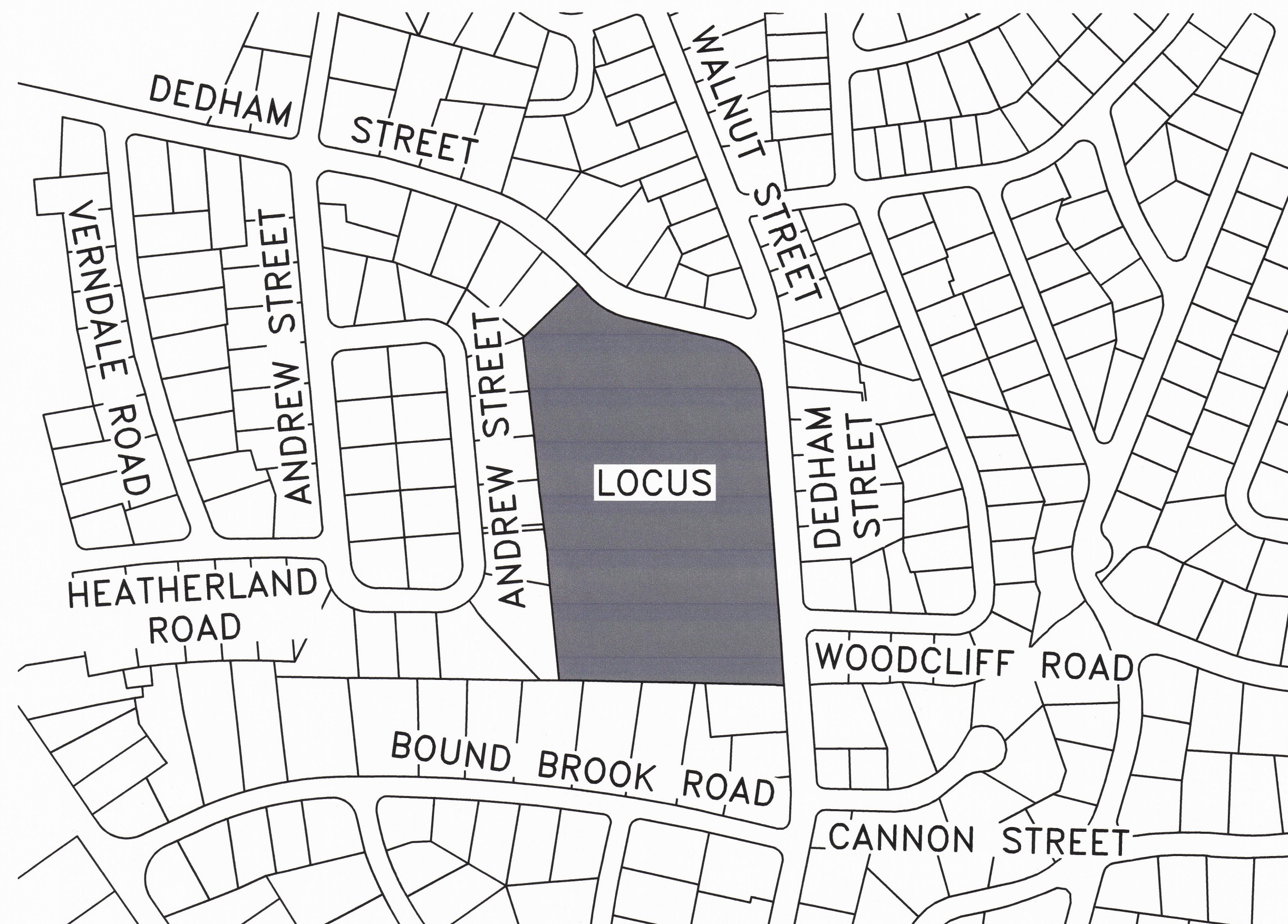
QUALITY LEVEL "D" INFORMATION ("QLD")	
— C	COMMUNICATIONS: CABLE TELEVISION, ALARM OR SIGNAL LINES
— D	DRAIN
— E	ELECTRIC: ELEC. POWER LINES, CABLES, CONDUIT & LIGHTING CABLES
— FO	COMMUNICATIONS: FIBER OPTIC
— G	PRODUCT: GAS, OIL, STEAM, PETROLEUM OR GASEOUS MATERIALS
— S	SEWER
— T	COMMUNICATIONS: TELEPHONE
— U	UNVERIFIED / UNKNOWN UTILITY TYPE
— W	WATER: LOW PRESSURE, HIGH PRESSURE, FIRE SERVICE

NOTES

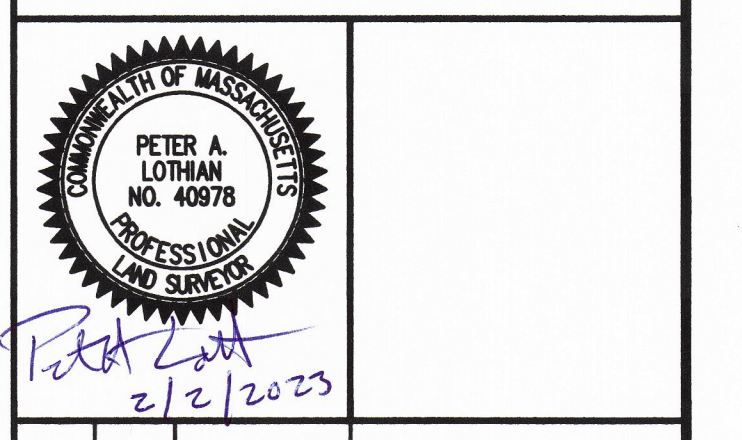
- RECORD OWNER IS CITY OF NEWTON. SEE REGISTRATION BK. 572 PG. 13 & DEED BK. 7743 PG. 462.
- ELEVATIONS REFER TO THE NAVD88 DATUM, DETERMINED BY GPS OBSERVATIONS USING GEOID18.
- SEE NEWTON ASSESSOR'S PARCEL 83006 0011.
- OWNERS OF ADJOINING PROPERTIES ARE ACCORDING TO CURRENT ASSESSOR'S RECORDS.
- SEE MIDDLESEX SOUTH DISTRICT REGISTRY OF DEEDS FOR RECORD DOCUMENTS.
- TOPOGRAPHIC FEATURES, SITE DETAILS AND SIGNIFICANT IMPROVEMENTS DEPICTED HEREON, WERE OBTAINED FROM A FIELD SURVEY CONDUCTED BY DGT ASSOCIATES IN JULY & NOVEMBER 2022.
- THIS TOPOGRAPHIC SURVEY BY DGT ASSOCIATES WAS PREPARED TO MEET NATIONAL MAP ACCURACY STANDARDS AT A SCALE OF 1"=20' HORIZONTALLY AND A 1 FOOT CONTOUR INTERVAL VERTICALLY. ANY REPRODUCTIONS OR RESCALING MAY AFFECT THE MAP ACCURACY.
- WETLAND FLAGGING WAS CONDUCTED ON JULY 5, 2022 BY FREDERICK KING FROM DGT ASSOCIATES, INC.
- THIS PARCEL LIES IN ZONE X WITH "NO SCREEN" (AREA OF MINIMAL FLOOD HAZARD); ZONE X "SCREENED" (0.2% ANNUAL CHANCE FLOOD HAZARD, AREAS OF 1% ANNUAL CHANCE FLOOD WITH AVERAGE DEPTH LESS THAN ONE FOOT OR WITH DRAINAGE AREAS OF LESS THAN ONE SQUARE MILE); AND ZONE AE (SPECIAL FLOOD HAZARD AREA) AS SHOWN ON FEMA FLOOD INSURANCE RATE MAPS NUMBER 25017C0554E & 25017C0562E DATED JUNE 4, 2010. THE LINES OF THE PROPOSED FLOOD ZONES SHOWN ON PRELIMINARY FLOOD INSURANCE RATE MAPS NUMBER 25017C0554F & 25017C0562F DATED AUGUST 13, 2021 ARE ALSO SHOWN ON THIS PLAN.
- THE ELEVATION OF FLOOD ZONE AE IS 112.4 (NAVD88) IN BOTH THE CURRENT (JUNE 4, 2010) AND PRELIMINARY (AUGUST 13, 2021) FLOOD INSURANCE STUDIES, AND IS SHOWN ON THIS PLAN BASED ON THE GROUND ELEVATIONS SURVEYED BY DGT ASSOCIATES, INC.
- LEGAL STATUS OF EASEMENTS, WAYS, AND RESTRICTIONS NOT DETERMINED BY THIS SURVEY.
- RECORD PLANS FOR WATER SERVICE TO THE BUILDING AND IN THE STREET RIGHT OF WAY WERE REQUESTED FROM, BUT NOT PROVIDED BY, THE CITY OF NEWTON.

LEGEND

AC	ASPHALT CURB
BANK#3	RIVER BANK FLAG
B.M.	BENCH MARK
BP	BOLLARD OR GUARD POST
CB	CATCH BASIN
CC	CONCRETE CURB
CLF	CHAIN LINK FENCE
CONC.	CONCRETE
CSW	CONCRETE SIDEWALK
DMH	DRAIN MANHOLE
EHH	ELECTRIC HAND HOLE/PULL BOX
EMH	ELECTRIC MANHOLE
EOP	EDGE OF PAVEMENT
FF=	FINISHED FLOOR ELEVATION
FP	FLAG POLE
GC	GRANITE CURB
GG	GAS GATE
GM	GAS METER
GP	GUY POLE
GW	GUY WIRE
HW	HEAD WALL
INV=	INVERT ELEVATION OF PIPE
LP	LIGHT POLE
MAHW#3	MEAN ANNUAL HIGH WATER FLAG
MH	MAN HOLE
MH	SQUARE MAN HOLE
MW	MONITORING WELL
N/F	NOW OR FORMERLY
POST	POST
RCB	ROUND CATCH BASIN
RET-WALL	RETAINING WALL
SGC	SLOPED GRANITE CURB
SIGN	SIGN
SIGN POST	SIGN POST
SILL=522.33	SILL ELEVATION
SLAB=518.11	GARAGE SLAB ELEVATION
SMH	SEWER MANHOLE
+125.33	SPOT ELEVATION, HARD SURFACE
+125.3	SPOT ELEVATION, SOFT GROUND
T3-P3	WETLAND TRANSECT BORING
TOC=125.33	TOP OF CONCRETE ELEVATION
TOW=522.3	TOP OF WALL ELEVATION
	TRAFFIC SIGNAL
UP	UTILITY POLE
UP	UTILITY POLE WITH LIGHT
W/	WITH
WF#A2	WETLAND FLAG
WG	WATER GATE
WSO	WATER SHUT-OFF
BOUNDARY MONUMENTS OR MARKERS	
(F)	FOUND
SBDH	STONE BOUND WITH DRILL HOLE



ISSUED FOR:
**EXISTING CONDITIONS
BASE PLAN**



NO.	APP	DATE	DESCRIPTION
2	PAL	2-FEB-23	ADD. DRAINAGE INFO
1	PAL	9-JAN-23	EXPANDED SURVEY

DATE: **9-AUG-2022**

SCALE: 1" = 20'

DESIGN:	DRAFT:	CHECKED:
XXX	PAL	PAL

PROJECT TITLE:

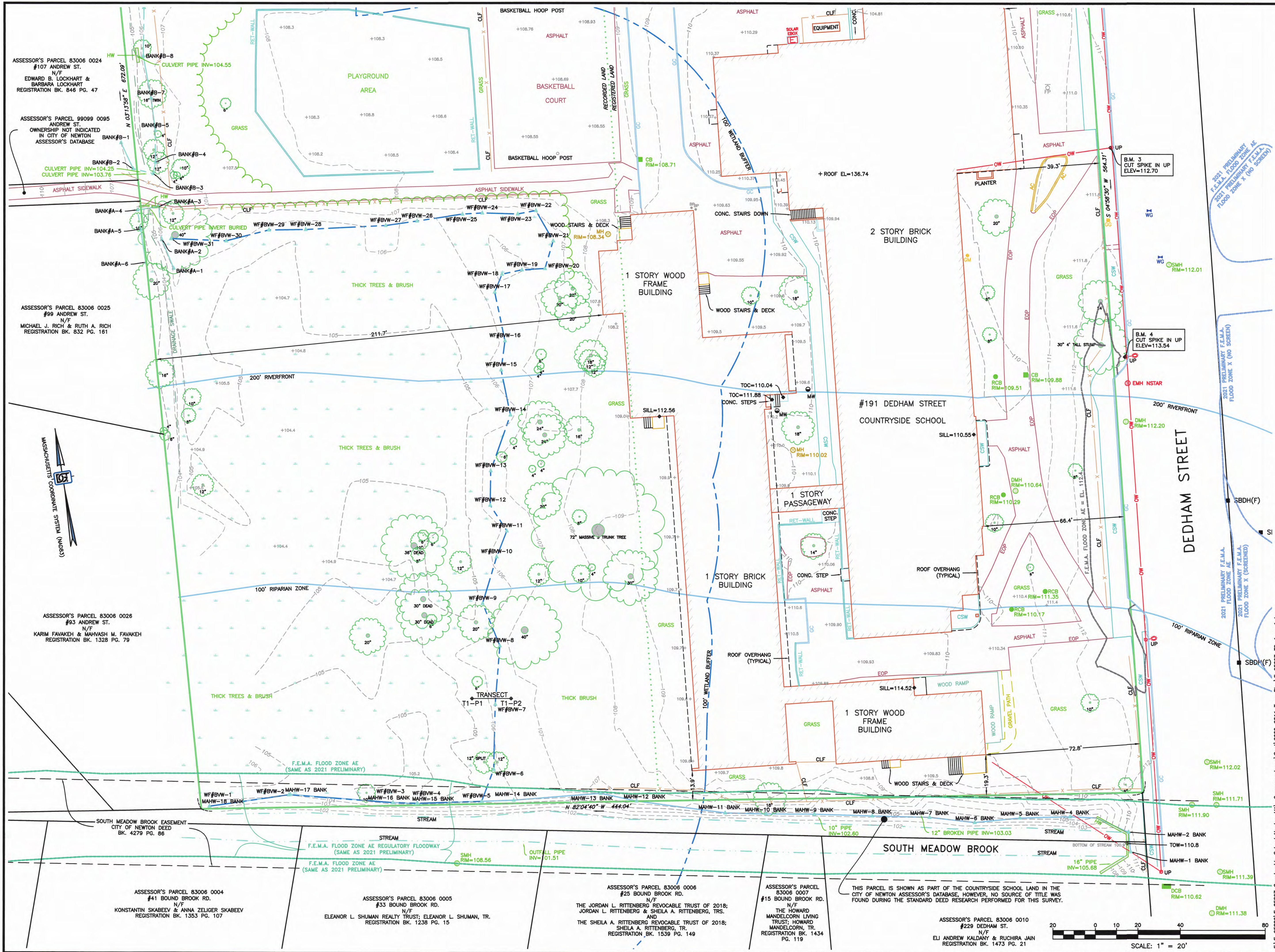
**COUNTRYSIDE
ELEMENTARY
SCHOOL**

#191 DEDHAM STREET
NEWTON, MASSACHUSETTS

SHEET TITLE:

TOPOGRAPHIC AND
BOUNDARY SURVEY

SHEET:	PROJECT NO.:	
1 OF 3	F-25807	EC-1



ISSUED FOR:
**EXISTING CONDITIONS
BASE PLAN**

2021 PRELIMINARY F.E.M.A. FLOOD ZONE AE
2021 PRELIMINARY F.E.M.A. FLOOD ZONE X (NO SCREEN)

2021 PRELIMINARY F.E.M.A. FLOOD ZONE AE
2021 PRELIMINARY F.E.M.A. FLOOD ZONE X (SCREENED)

ISSUED FOR:
**EXISTING CONDITIONS
BASE PLAN**

PETER A. LOTHAN
NO. 40978
PROFESSIONAL
AND SEALING

8/11/2022

NO.	APP	DATE	DESCRIPTION
1	PAL	8/11/22	WF, BANK, MAHW TEX

DATE: **9-AUG-2022**

SCALE: 1" = 20'

DESIGN:	DRAFTED:	CHECKED:
XXX	PAL	PAL

PROJECT TITLE:
**COUNTRYSIDE
ELEMENTARY
SCHOOL**

#191 DEDHAM STREET
NEWTON, MASSACHUSETTS

SHEET TITLE:
**TOPOGRAPHIC AND
BOUNDARY SURVEY**

SHEET:
2 OF 2

PROJECT NO.:
F-25807

EC-2

© 2022 BY DGT ASSOCIATES

F:\F-25807\F-25807 Countryside School Newton MA\Correspondence\Short\2022-0811_Topo Plan\F-25807-10-1-rev1.dwg

LEGEND

- AC BANK#3
- B.M. BENCH MARK
- BP BOLLARD OR GUARD POST
- CB CATCH BASIN
- CC CONCRETE CURB
- CLF CHAIN LINK FENCE
- CONC. CONCRETE
- CSW CONCRETE SIDEWALK
- DMH DRAIN MANHOLE
- EMH ELECTRIC HAND HOLE/PULL BOX
- EMH ELECTRIC MANHOLE
- EOP EDGE OF PAVEMENT
- FF FINISHED FLOOR ELEVATION
- FP FLAG POLE
- GC GRANITE CURB
- GG GAS GATE
- GM GAS METER
- GP GUY POLE
- GW GUY WIRE
- HW HEAD WALL

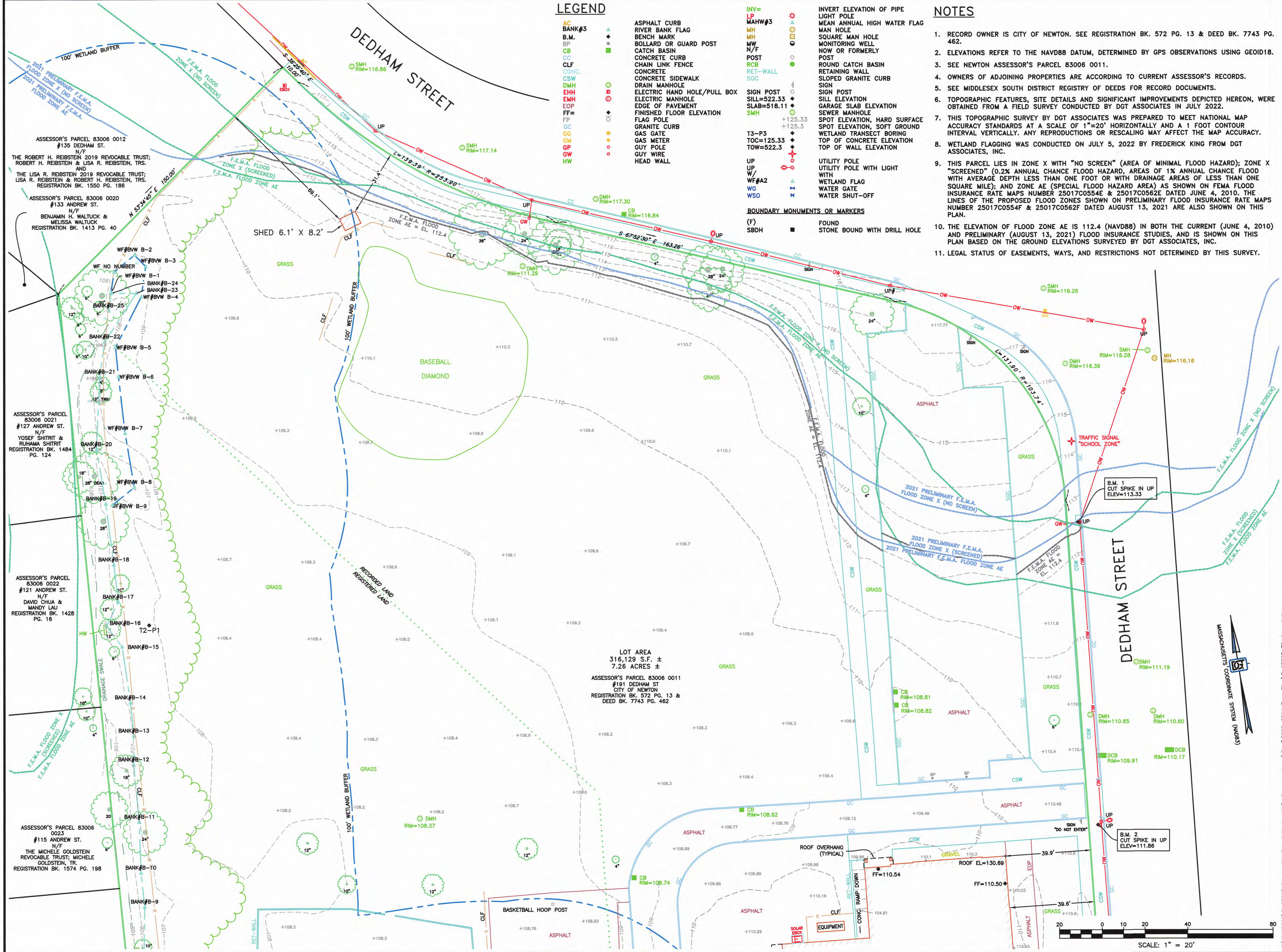
- INV= INVERT ELEVATION OF PIPE
- LP LIGHT POLE
- MAHW#3 MEAN ANNUAL HIGH WATER FLAG
- MH MAN HOLE
- SMH SQUARE MAN HOLE
- MONITORING WELL
- N/F NOW OR FORMERLY
- POST ROUND CATCH BASIN
- RET-WALL RETAINING WALL
- SGC SLOPED GRANITE CURB
- SIGN POST SIGN
- SILL=522.33 SIGN ELEVATION
- SLAB=518.11 GARAGE SLAB ELEVATION
- SMH SEWER MANHOLE
- SPOT ELEVATION, HARD SURFACE SPOT ELEVATION, SOFT GROUND
- T3-P3 WETLAND TRANSECT BORING
- TOC=125.33 TOP OF CONCRETE ELEVATION
- TOW=522.3 TOP OF WALL ELEVATION

- UP UTILITY POLE
- W/ UTILITY POLE WITH LIGHT
- WF#A2 WATER GATE
- WG WATER GATE
- WSD WATER SHUT-OFF

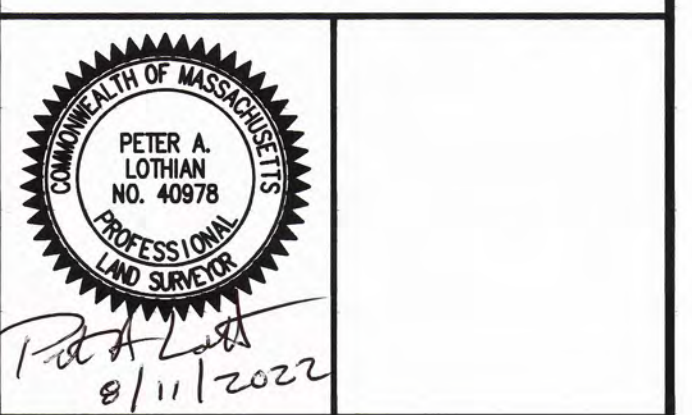
- BOUNDARY MONUMENTS OR MARKERS
- (F) FOUND
- SBDH STONE BOUND WITH DRILL HOLE

NOTES

1. RECORD OWNER IS CITY OF NEWTON. SEE REGISTRATION BK. 572 PG. 13 & DEED BK. 7743 PG. 462.
2. ELEVATIONS REFER TO THE NAVD88 DATUM, DETERMINED BY GPS OBSERVATIONS USING GEOID18.
3. SEE NEWTON ASSESSOR'S PARCEL 83006 0011.
4. OWNERS OF ADJOINING PROPERTIES ARE ACCORDING TO CURRENT ASSESSOR'S RECORDS.
5. SEE MIDDLESEX SOUTH DISTRICT REGISTRY OF DEEDS FOR RECORD DOCUMENTS.
6. TOPOGRAPHIC FEATURES, SITE DETAILS AND SIGNIFICANT IMPROVEMENTS DEPICTED HEREON, WERE OBTAINED FROM A FIELD SURVEY CONDUCTED BY DGT ASSOCIATES IN JULY 2022.
7. THIS TOPOGRAPHIC SURVEY BY DGT ASSOCIATES WAS PREPARED TO MEET NATIONAL MAP ACCURACY STANDARDS AT A SCALE OF 1"=20' HORIZONTALLY AND A 1 FOOT CONTOUR INTERVAL VERTICALLY. ANY REPRODUCTIONS OR RESCALING MAY AFFECT THE MAP ACCURACY.
8. WETLAND FLAGGING WAS CONDUCTED ON JULY 5, 2022 BY FREDERICK KING FROM DGT ASSOCIATES, INC.
9. THIS PARCEL LIES IN ZONE X WITH "NO SCREEN" (AREA OF MINIMAL FLOOD HAZARD); ZONE X "SCREENED" (0.2% ANNUAL CHANCE FLOOD HAZARD, AREAS OF 1% ANNUAL CHANCE FLOOD WITH AVERAGE DEPTH LESS THAN ONE FOOT OR WITH DRAINAGE AREAS OF LESS THAN ONE SQUARE MILE); AND ZONE AE (SPECIAL FLOOD HAZARD AREA) AS SHOWN ON FEMA FLOOD INSURANCE RATE MAPS NUMBER 25017C0554E & 25017C0562E DATED JUNE 4, 2010. THE LINES OF THE PROPOSED FLOOD ZONES SHOWN ON PRELIMINARY FLOOD INSURANCE RATE MAPS NUMBER 25017C0554F & 25017C0562F DATED AUGUST 13, 2021 ARE ALSO SHOWN ON THIS PLAN.
10. THE ELEVATION OF FLOOD ZONE AE IS 112.4 (NAVD88) IN BOTH THE CURRENT (JUNE 4, 2010) AND PRELIMINARY (AUGUST 13, 2021) FLOOD INSURANCE STUDIES, AND IS SHOWN ON THIS PLAN BASED ON THE GROUND ELEVATIONS SURVEYED BY DGT ASSOCIATES, INC.
11. LEGAL STATUS OF EASEMENTS, WAYS, AND RESTRICTIONS NOT DETERMINED BY THIS SURVEY.



ISSUED FOR:
**EXISTING CONDITIONS
BASE PLAN**



NO.	APP.	DATE	DESCRIPTION
1	PAL	8/11/22	WF, BANK, MAHW TEX

DATE: **9-AUG-2022**

SCALE: 1" = 20'

DESIGN:	DRAFTED:	CHECKED:
XXX	PAL	PAL

**COUNTRYSIDE
ELEMENTARY
SCHOOL**

#191 DEDHAM STREET
NEWTON, MASSACHUSETTS

TOPOGRAPHIC AND
BOUNDARY SURVEY

SHEET: **1 OF 2**

PROJECT NO.: **F-25807**

EC-1

© 2022 BY DGT ASSOCIATES