

TLC *for* LED[®]

Total Light Control[™]




We Make It Happen[®]

Keeping Good Lighting Affordable

With the emergence of LED sports lighting, facility owners are discovering that different manufacturers produce vastly different results.

The LED light source has distinctive challenges and advantages. To realize the full potential of LED lighting, it takes experience and a proven system for controlling and applying the unique characteristics of the diode in a sports setting.

With Musco's more than 45 years of experience—and over a decade of researching LED—our Team has looked at the combination of issues to achieve the best solution to meet your needs from structures, to quality of on-field light, to off-site impact, to energy and costs.

The result is a system that makes Musco's great lighting even better.

Better for players...

who want to perform their best and be able to track the entire flight of the ball.

Better for fans...

who want to see the game better and enjoy world-class light shows watching preps or the pros.

Better for neighbors...

who won't have light spill or glare in their homes or lights left on when not in use.

Better for the night sky...

with more light directed onto the field and less spilling above it.

Better for your budget...

an affordable system that's built to last and control operating costs.

And you won't have to worry about maintenance costs for up to 25 years.

Control

from foundation to poletop...

from the light source to the field,
preserving the night sky...

assuring the results you expect,
day 1... year 1... and for 25 years.



A Unique System Design

5 Easy Pieces™ complete from foundation to poletop.

While other manufacturers produce single light fixtures, our system approach delivers better long-term reliability and trouble-free operation.

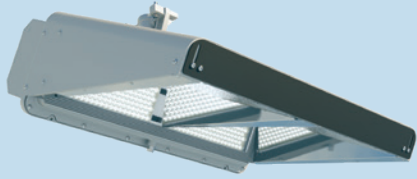
Whether it's Light-Structure System™ complete from foundation to poletop, or SportsCluster® System retrofitted to existing structures, we include lighting, structural, and electrical components designed to work together.

Our system provides a more protective environment for the LED's sensitive electronics, integrated grounding, surge protection, and remote drivers so servicing can be done from a step ladder, not a lift.

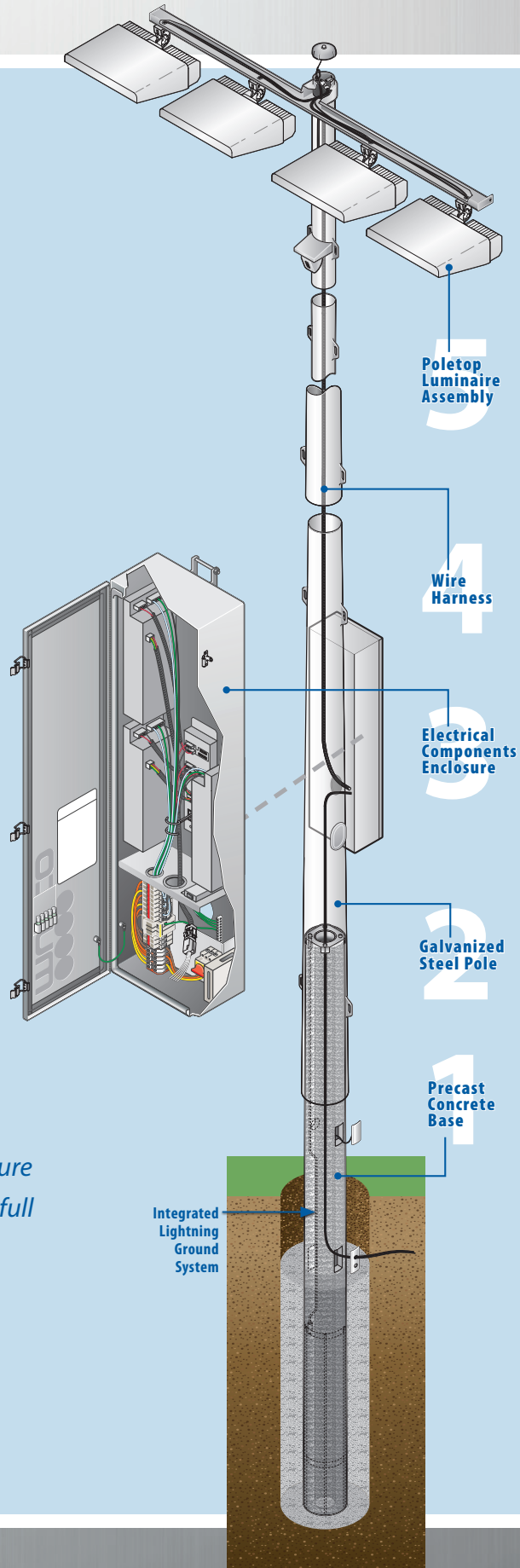
And we guarantee its performance for up to 25 years.



Control
from the foundation to the poletop.



TLC for LED[®]
Total Light Control™



“Advancements in all aspects of fixture design are critical to achieving the full performance of LED technology.”

— U.S. Department of Energy
www.energy.gov/eere/ssl/led-basics

A Better Night Game Experience

The key issues in sports lighting haven't changed—how do you put more light onto the field, spill less around it, protect the night sky, reduce glare, and ensure it performs when needed and withstands the elements.

Our TLC for LED® system delivers highly-controlled downward light from the poletop, along with precisely-targeted upward light from our BallTracker® luminaires. Together, this patented system illuminates the underside of a ball in flight, creates better contrast against the dark night sky, and creates unparalleled cut-off, preventing spill and glare from affecting the surrounding area.

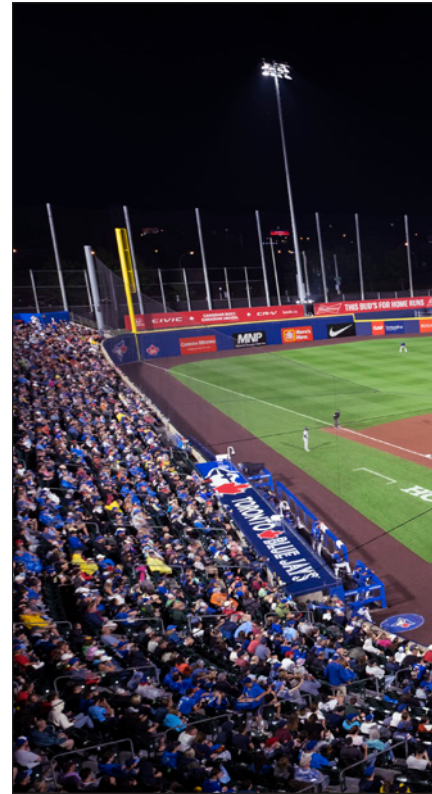
And for an enhanced entertainment experience, Musco's strategically located color-changing luminaires and innovative light-to-sound synchronization capabilities create Big League light shows for players and fans at fields of all sizes.

This is why, when you walk onto a field lighted by Musco, it just looks better.

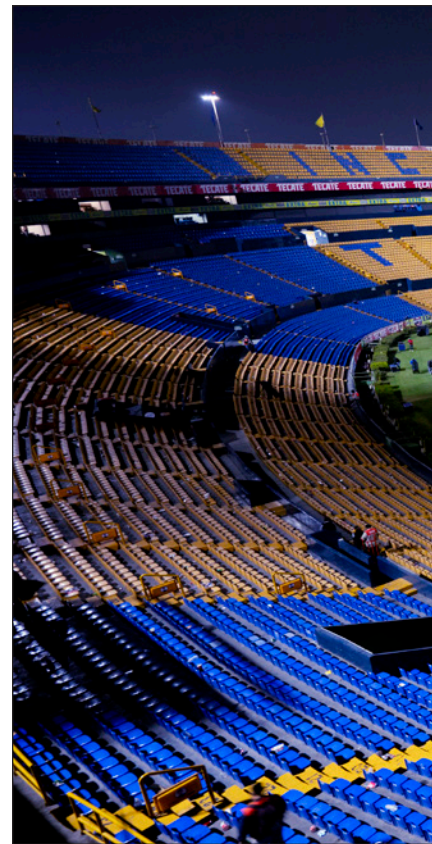
"Now you can actually see the seams of the baseball coming in at you, and you can pick up spin easier. BallTracker is really important because when the ball gets up into the air it keeps the ball white against the dark sky. So it helps a lot."

— Nate Esposito, Wilmington Blue Rocks (MiLB)

Control from the light source to the field.



Sahlen Field - Buffalo, New York, USA



Estadio Tigres - Nuevo Leon, Mexico



With patented BallTracker® technology, players enjoy quality lighting, no glare, and better ability to track the entire flight of the ball.



Pinpoint control from 1,100 feet away highlights the target area while preserving surrounding darkness.



Event lighting with dimming saves energy for high-usage, multi-use venues.



Show-Light® theatrics and special effects enhance fan and TV experience.

Mount Rushmore - Keystone, South Dakota, USA

University of Notre Dame - Notre Dame, Indiana, USA

A Solution Neighbors Will Love

Emitting light is easy, controlling it isn't. At Musco, we care as much about preserving darkness around your field as we do putting high-quality lighting onto it.

Our system's custom optics, designed around the LEDs, control and apply the light precisely where it's needed. And our patented fixture visoring greatly reduces glare at the light source.

This means no spill light or disruptive glare affecting neighboring homes, and the preservation of dark skies above. It's why our system could be installed at a large, multi-field sports complex located in close proximity to an international airport.

Our light control capabilities have made lighting possible at fields where, previously, it wasn't allowed due to community concerns.

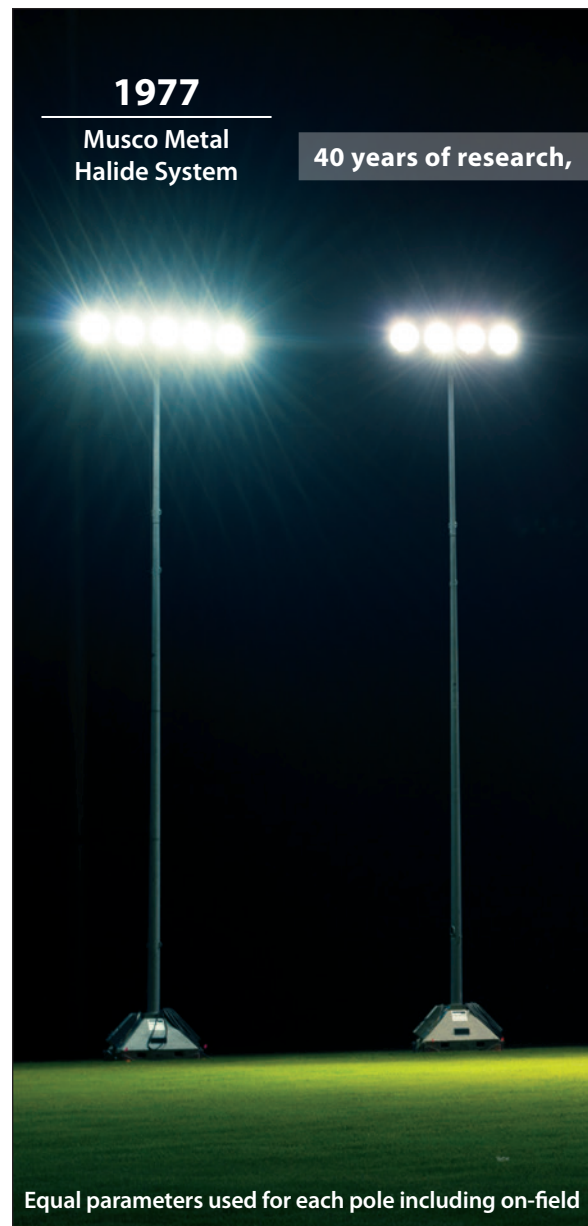
Control
preserving the night sky.

"Glyndon Park is in a naturally wooded residential area. We didn't want to illuminate the homes of neighbors in the area. I initially wasn't supportive of putting in traditional lights. The product Musco has developed allows us to light this field, yet light nothing else around it."

— Parks and Recreation Director, Vienna, VA



Glyndon Park Little League, Vienna, Virginia, USA



Equal parameters used for each pole including on-field

increasing efficiency and minimizing environmental impact.

Today

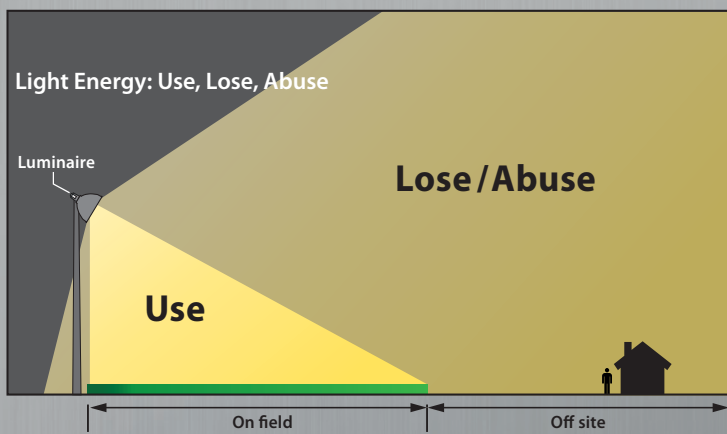
Musco LED System

Today

Other Luminaire Manufacturer LED



light produced, wattage, height, and aiming angle.



A Field That's Always Ready for Play

With the remote facility management of Musco's Control-Link® service, your field will always have light when it's needed.

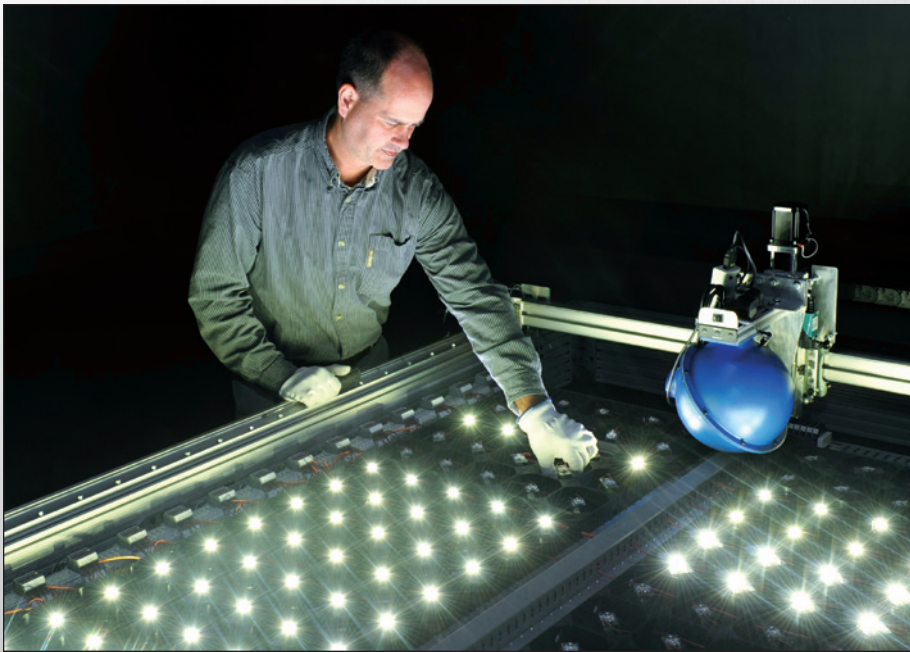
You'll be able to instantly turn your lights on or off from anywhere, with the touch of a smart phone. Our Team at Control-Link Central™ will be there for you 24/7 to provide scheduling and monitoring support.

In fact, if a problem arises we'll likely know about it before you do, right down to the fixture. Here's a look at the service we provided customers in just the past year:

- *Turned lights on/off remotely for more than 7.6 million events.*
- *Conducted routine inspections and maintenance at over 11,000 fields.*
- *Helped with scheduling and answered questions on over 297,000 calls, over 981,000 app sessions, and 1.3 million web site log-ins.*
- *Traveled enough miles servicing fields to circle the equator 24 times.*

And with our 25-year parts and labor warranty, you'll have peace of mind for the next 9,125 days knowing that you'll pay zero maintenance costs, won't have headaches over staffing and managing your lights, and will be free from neighbors complaining about lights being left on.

Control assuring the results you expect.



Our R&D, customization, and application capabilities deliver solutions specific to each customer's needs.

"Musco called to let us know there was an issue before we knew we had a problem."

— Stephen Cooke, CPRP, CYSA
Greenville County Recreation Athletics Manager, Taylors, SC



Our regionally-based technicians provide prompt service for 25 years.

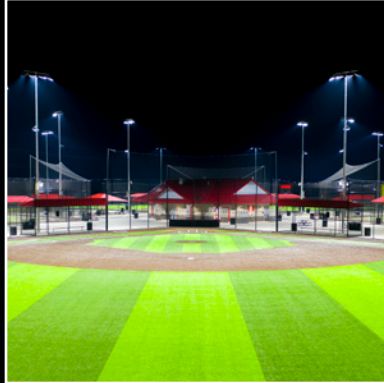


Our Control-Link service provides 24/7 proactive monitoring and the support of a fully staffed call center.



Musco's Light-Structure System™ performs in real world conditions **for 25 years, guaranteed.**

We Make It Happen.®



Control

from foundation to poletop...

from the light source to the field,
preserving the night sky...

assuring the results you expect,
day 1...year 1... and for 25 years.



We Make It Happen.

www.musco.com

e-mail: lighting@musco.com

Phone: 800.825.6030